

V&V Reference Report

L2 ASCDS Version : 7.6.10

Observation 148 - L2 Version 001
Chandra X-Ray Center

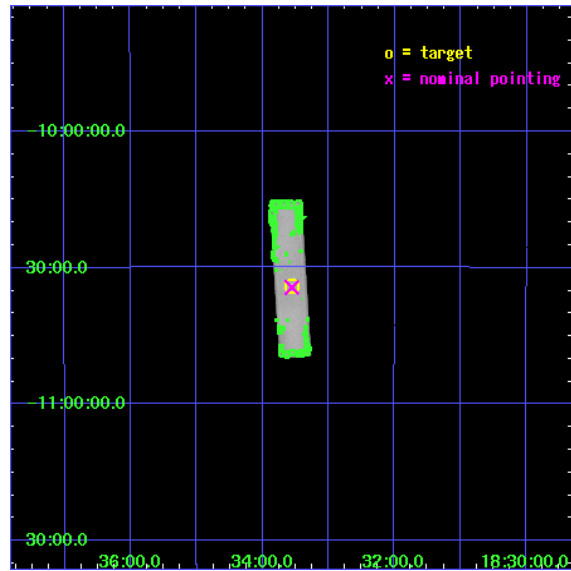
L2 Processing Date : Jun 6 2007

Contents

1	Front	2
2	OBI	3
2.1	OBI	3
2.1.1	Images	3
2.1.2	Parameters	4
2.1.3	Events	4
2.2	Compared Parameters	5
2.3	Aspect	6
2.4	Star Slots	9
2.4.1	Slot 3	9
2.4.2	Slot 4	10
2.4.3	Slot 5	11
2.4.4	Slot 6	12
2.4.5	Slot 7	13
2.5	FID Slots	14
2.5.1	Slot 0	14
2.5.2	Slot 1	15
3	Point Sources	16
A	Summary	17
A.1	Status	17
A.2	Comments	17

1 Front

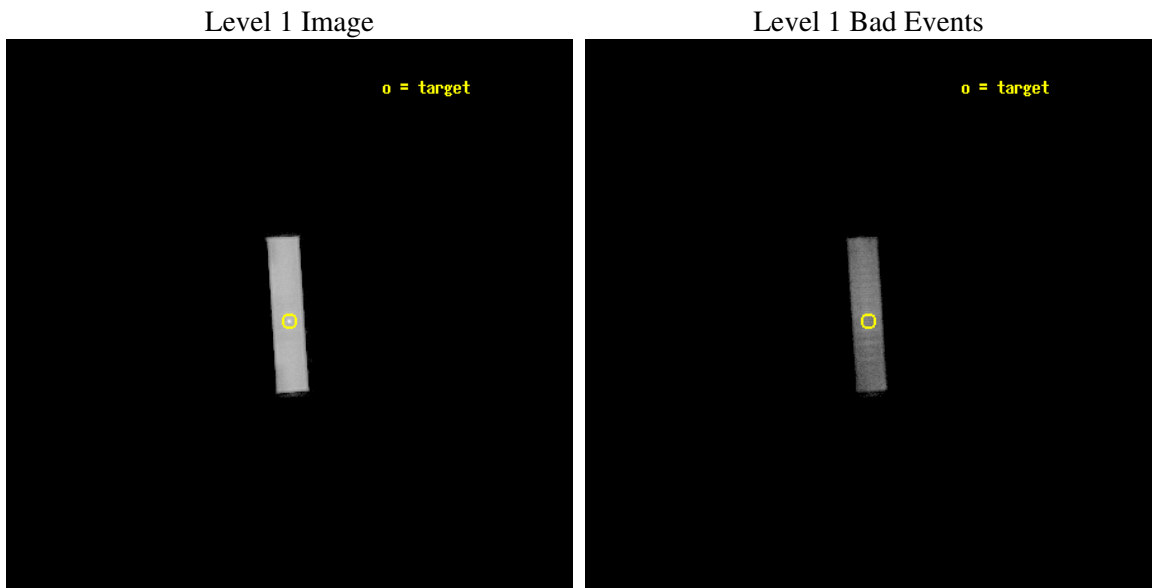
seq_num	590016
obs_id	148
title	HRC RESPONSE TO CONTINUUM SOURCE.
observer	Dr. CXC Calibration
object	G21.5-0.9 [HRC-S, Offsets=0,0,0 CENTER MCP]
ra_targ	278.389583
dec_targ	-10.568528
ra_nom	278.38891577927
dec_nom	-10.573267031659
roll_nom	266.30416148837
revision	5
ontime	10120.081630006
livetime	10030.695592426
l2events	501164



2 OBI

2.1 OBI

2.1.1 Images



2.1.2 Parameters

obi_num	0
ascdsver	7.6.10
caldbver	3.4.0
date	2007-06-06T12:51:15
revision	5

sched_exp_time	10300.000000
ontime	10120.081630006
l1events	632941

2.1.3 Events

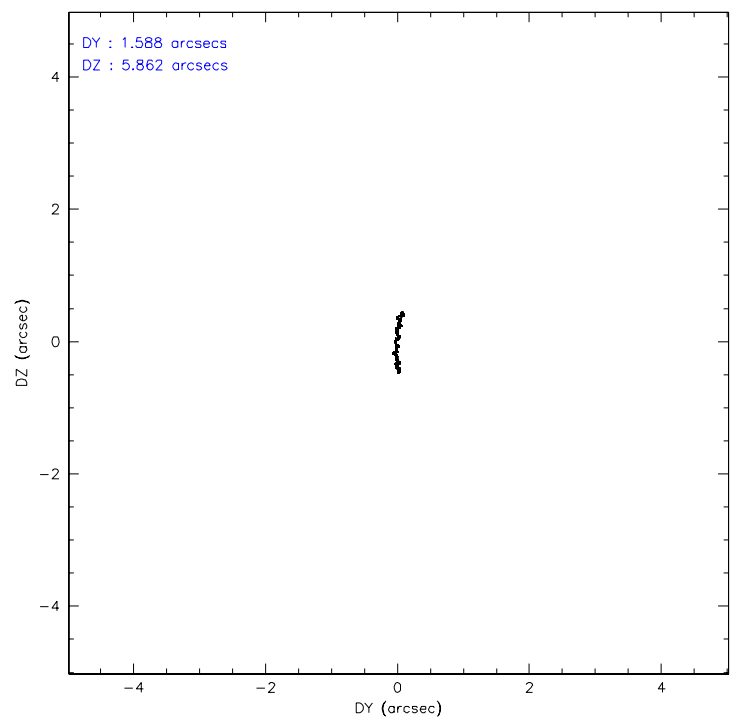
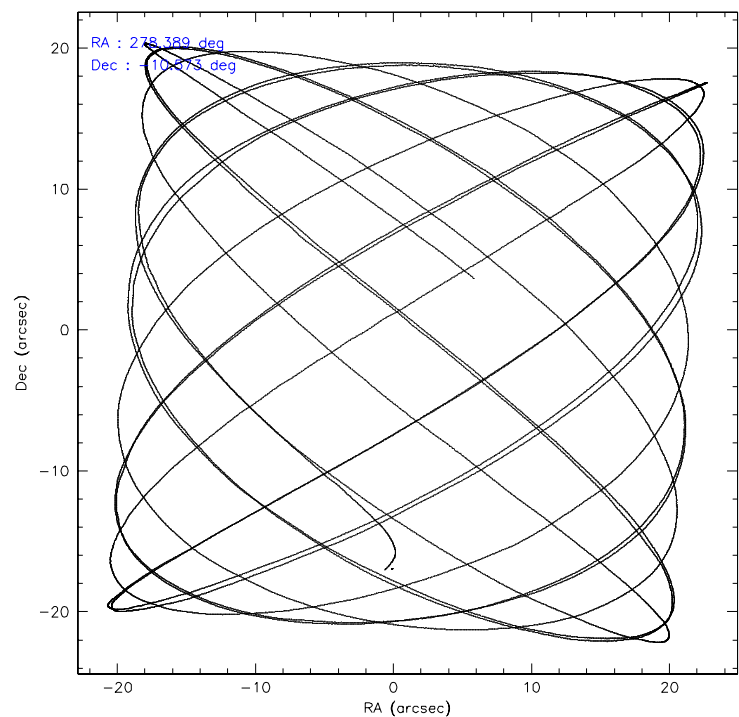
Level 1 Events

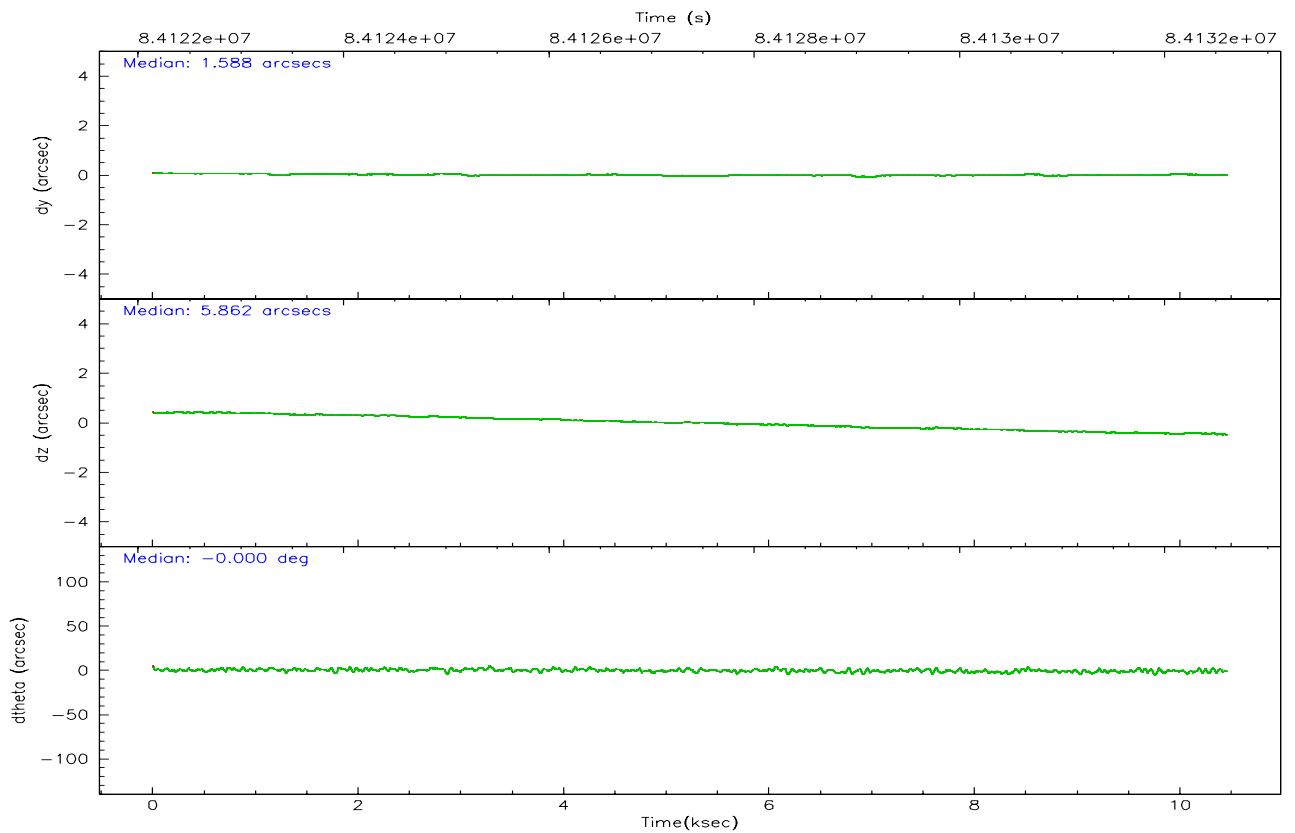
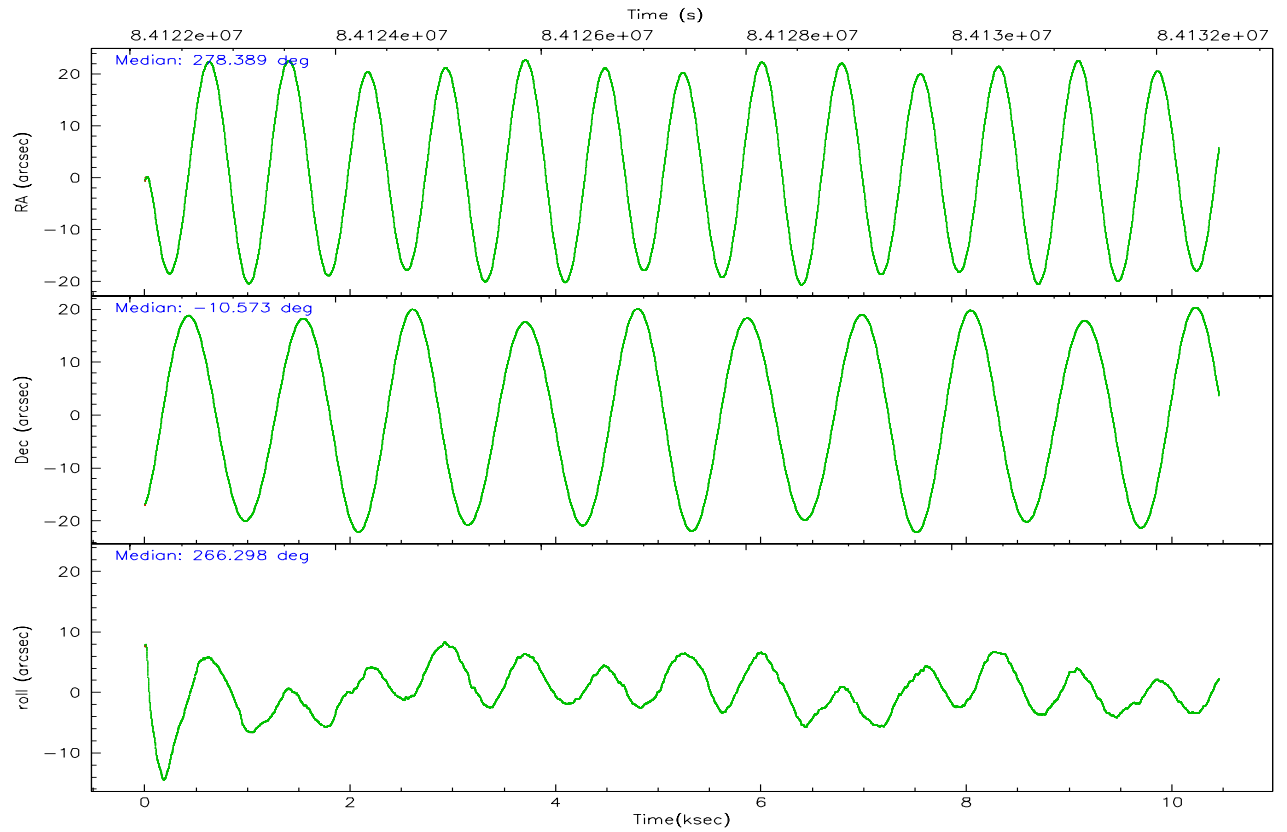
	segment 1	segment 2	segment 3
level 1 events	0	632941	0
rejected events	0	108049	0
rejected %	0%	17%	0%

2.2 Compared Parameters

Parameter	Planned	Actual	Parameter	Planned	Actual
Instrument	HRC	HRC	Obspar format version number	6	6
Detector	HRC-S	HRC-S	Obspar file type	PREDICTED	ACTUAL
Grating	NONE	NONE	Obspar update status	NONE	UPDATED
Data mode	OBSERVING	OBSERVING			
Observation mode	POINTING	POINTING			
Pointing RA	278.374967	278.3889157792678			
Pointing Dec	-10.548211	-10.57326703165893			
Pointing Roll	266.234251	266.3041614883745			
SIM focus pos (mm)	-1.429586	-1.428180813131781			
SIM defocus (mm)	0.1037507710433287	0.1051558262725154			
SIM translation stage pos (mm)	250.455976	250.466033080201			
SIM translation stage offset (mm)	0	-0.01005468664627074			
Observation start time	84122306.184000	84121158.375377			
Observation start date	2000-08-31T15:17:22	2000-08-31T14:59:18			
Observation end time	84132606.184000	84132739.850812			
Observation end date	2000-08-31T18:09:02	2000-08-31T18:12:19			

2.3 Aspect



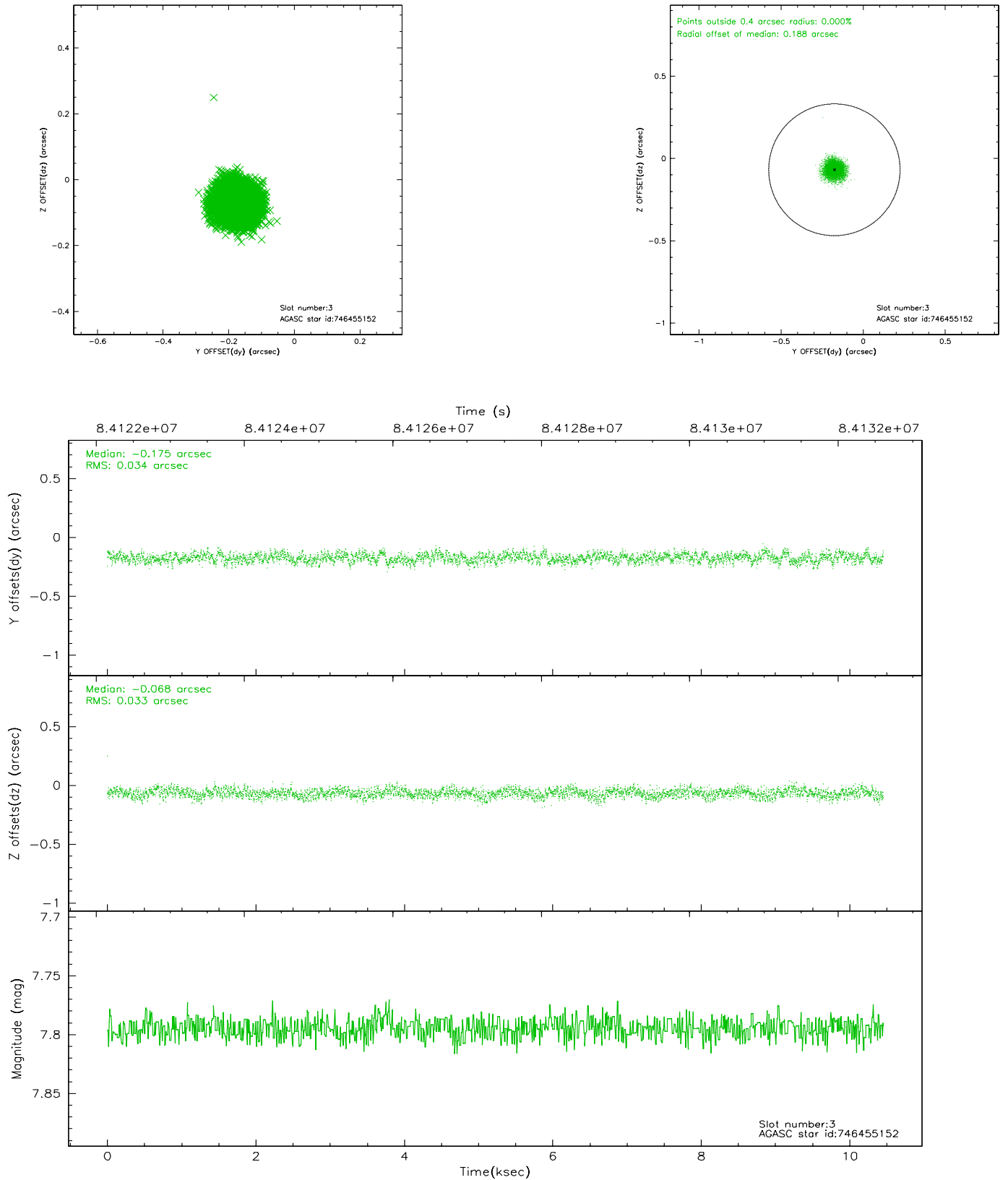


Slot Statistics

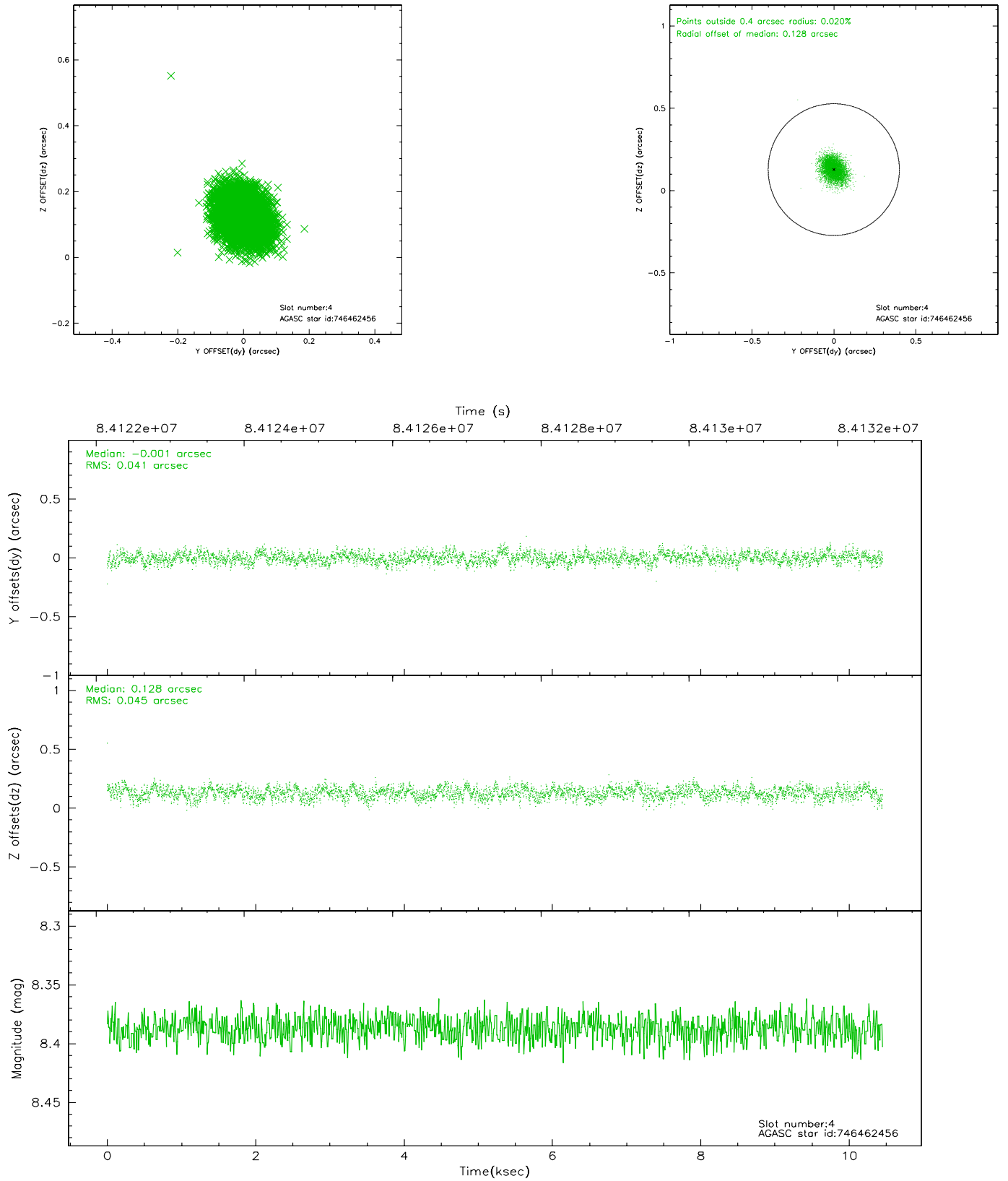
slot	status	id	mag	n_pts	med_dy	med_dz	dr1	dr2	ra	dec	mean_y	mean_z
0	FID	HRC-S-1	6.97	2550	0.124	-0.145	0.015	0.021	0.000000	0.000000	-1155.64	-454.33
1	FID	HRC-S-3	6.99	2551	0.125	-0.055	0.015	0.021	0.000000	0.000000	-1158.76	575.11
2	OMITTED		0.00	0	0.000	0.000	0.000	0.000	0.000000	0.000000	0.00	0.00
3	GUIDE	746455152	7.79	5102	-0.175	-0.068	0.051	0.080	278.447893	-9.976732	-2070.16	123.28
4	GUIDE	746462456	8.39	5100	-0.001	0.128	0.066	0.105	278.652171	-10.530173	-129.36	975.62
5	GUIDE	746455112	8.93	5101	0.234	-0.239	0.071	0.117	278.266531	-10.703234	582.23	-345.35
6	GUIDE	746460272	8.92	5100	-0.049	0.113	0.081	0.131	278.847488	-10.152127	-1531.83	1577.86
7	GUIDE	746461728	9.79	5093	-0.012	0.064	0.112	0.183	278.986921	-10.530755	-203.54	2158.28

2.4 Star Slots

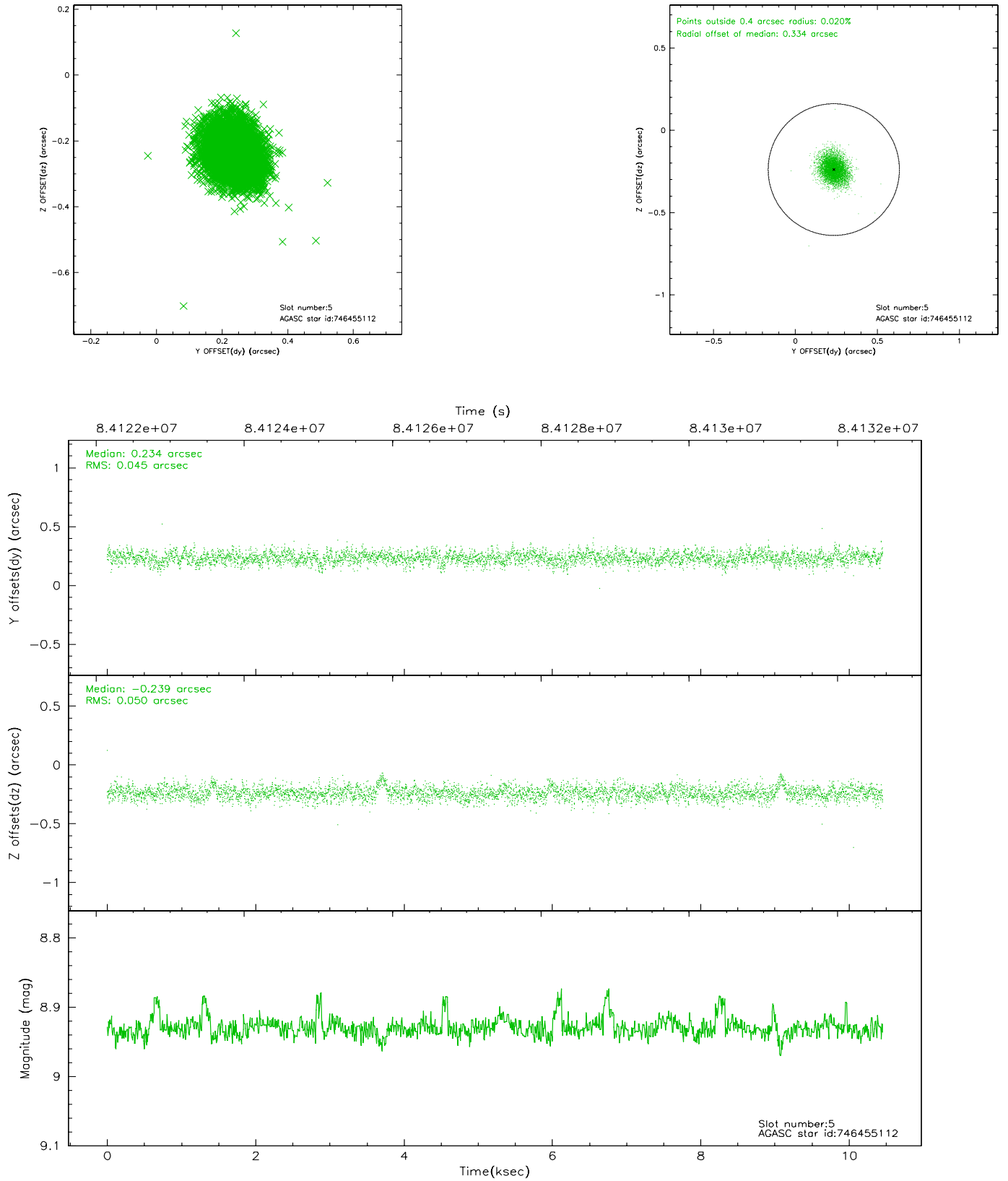
2.4.1 Slot 3



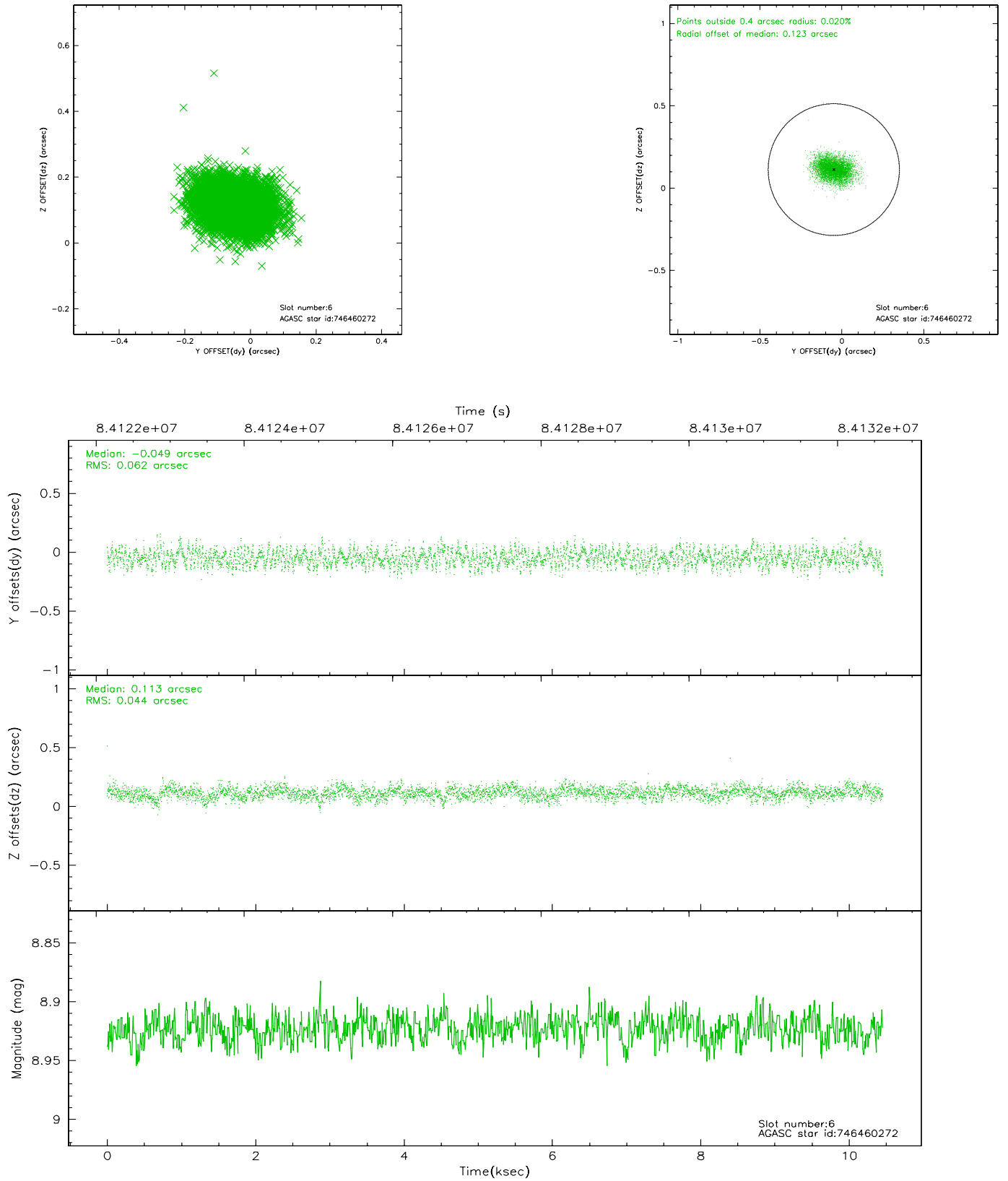
2.4.2 Slot 4



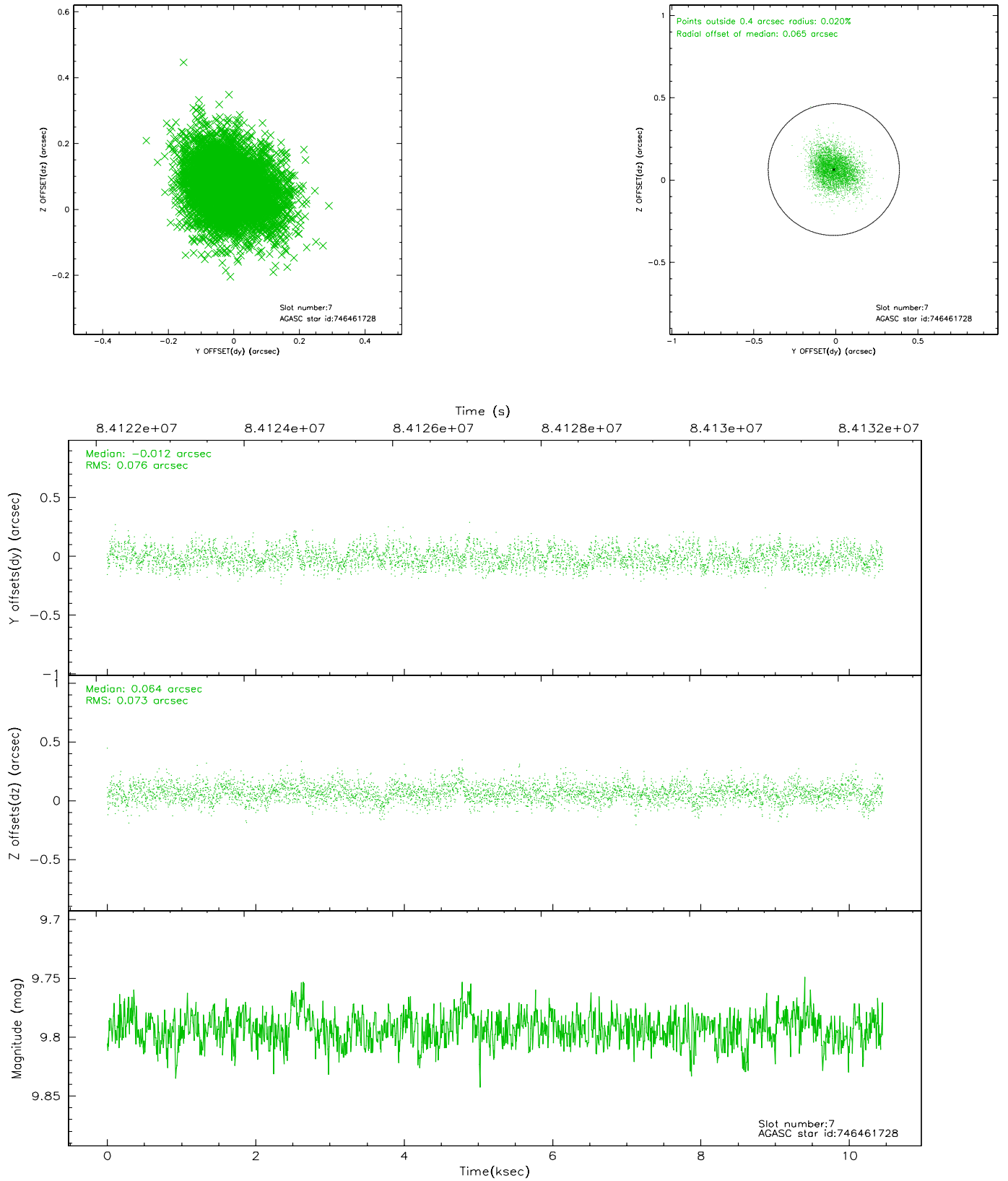
2.4.3 Slot 5



2.4.4 Slot 6

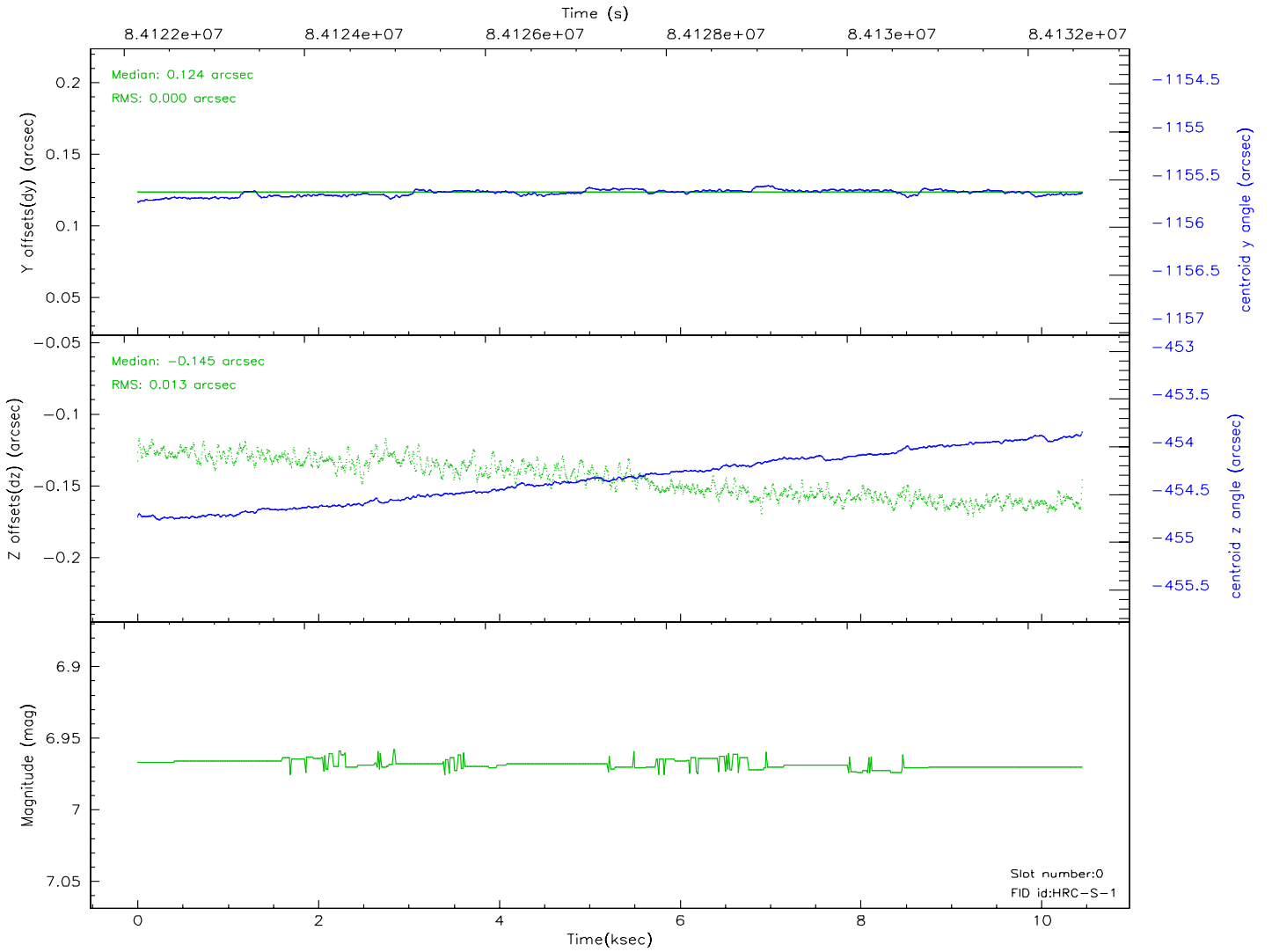
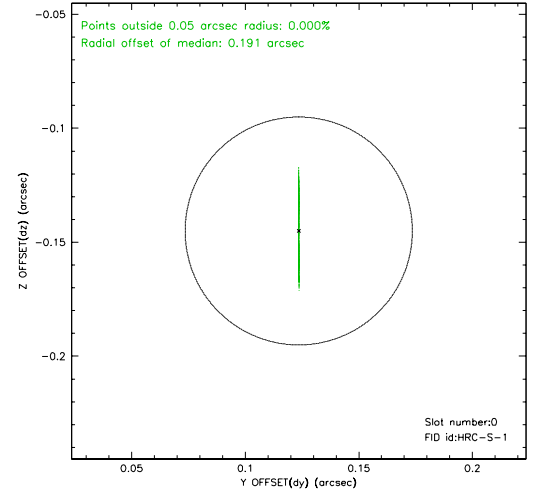
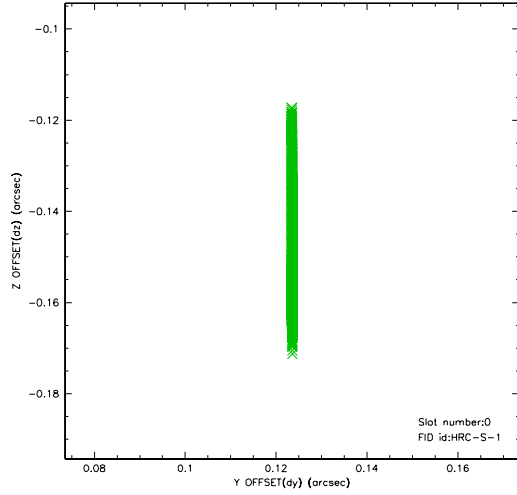


2.4.5 Slot 7

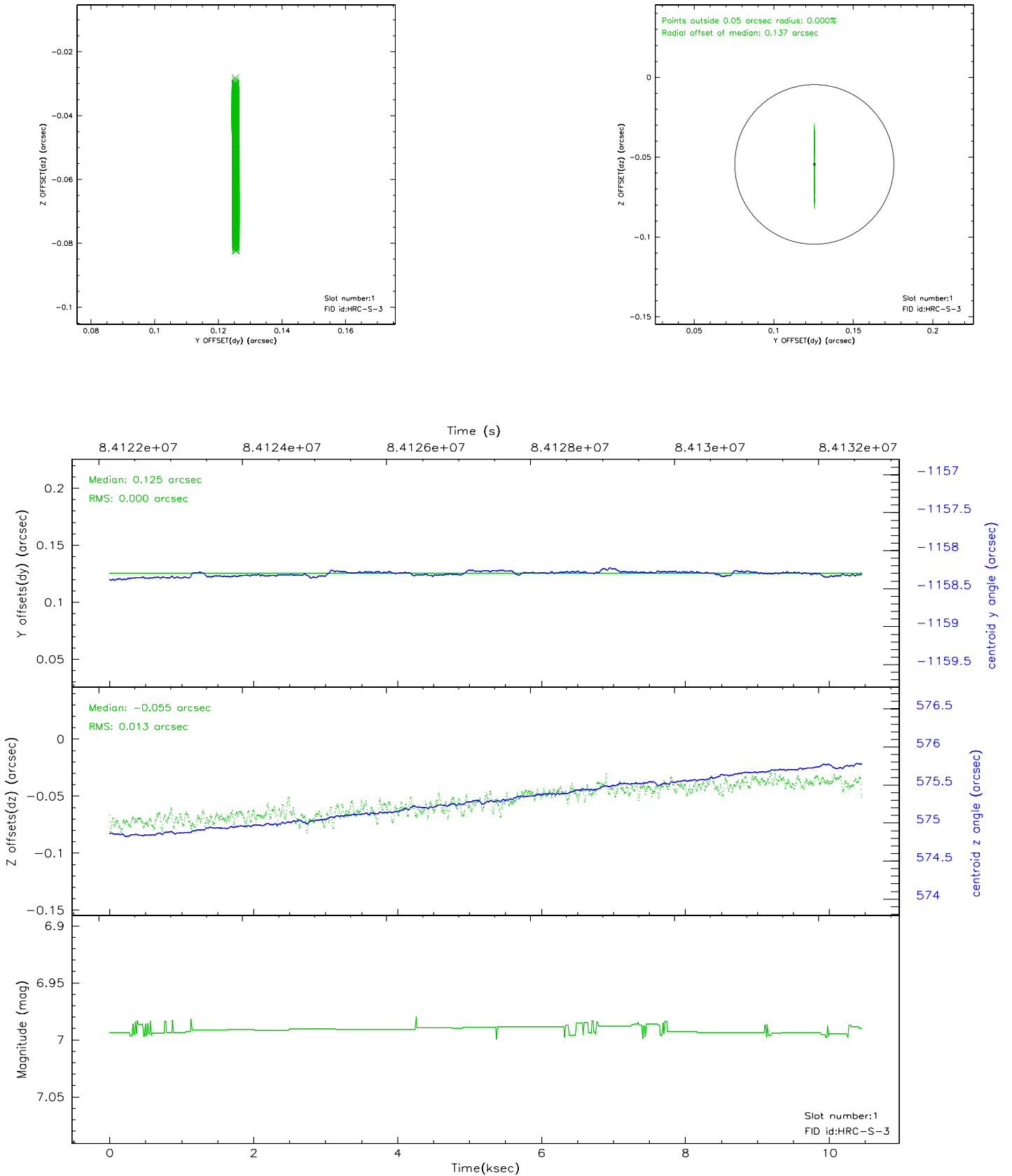


2.5 FID Slots

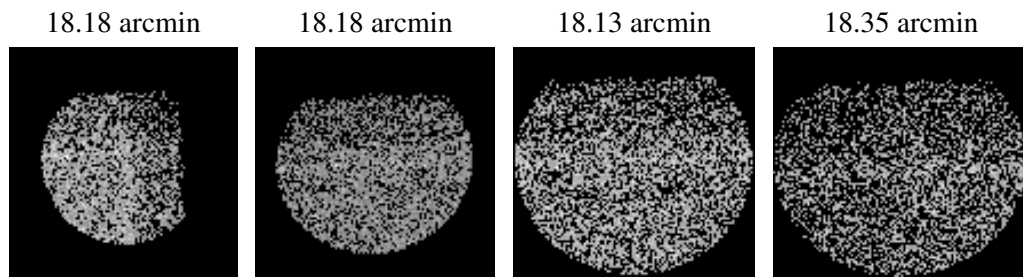
2.5.1 Slot 0



2.5.2 Slot 1



3 Point Sources



A Summary

A.1 Status

V&V Scientist	Jen Lauer
V&V Date (YYYY-MM-DD)	2007.06.06
V&V Edition	1
V&V Disposition and Status	OK
V&V Charge Time	10.12

A.2 Comments

Monitor constraint not met, data obtained outside of requested monitor window (follow obsid 146 by 100+/-15 days), actual ~180 days; for calibration

--> deemed OK

The fid light in slot 2 was removed from the aspect solution due to poor data quality. The aspect solution is not expected to be degraded by removing one fid light from the solution.