

V&V Reference Report

L2 ASCDS Version : 8.1.1

Observation 1409 - L2 Version 4

Chandra X-Ray Center

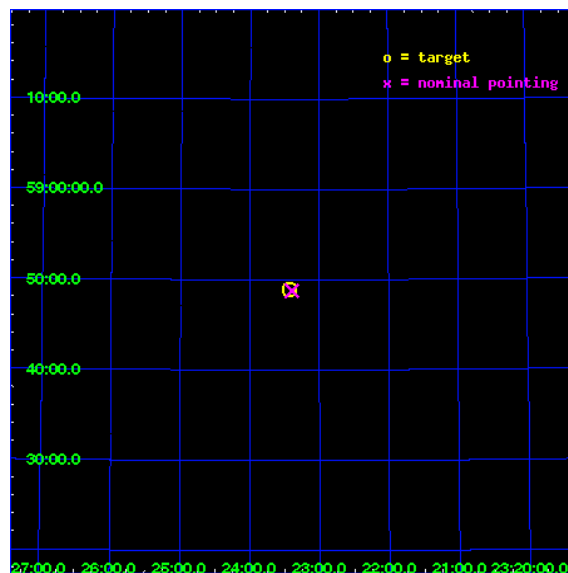
L2 Processing Date : Nov 20 2009

Contents

1	Front	2
2	OBI	3
2.1	OBI	3
2.1.1	Images	3
2.1.2	Parameters	4
2.1.3	Events	4
2.2	Compared Parameters	5
2.3	Aspect	6
2.4	Star Slots	9
2.4.1	Slot 3	9
2.4.2	Slot 4	10
2.4.3	Slot 5	11
2.4.4	Slot 6	12
2.4.5	Slot 7	13
2.5	FID Slots	14
3	Point Sources	15
A	Summary	16
A.1	Status	16
A.2	Comments	16

1 Front

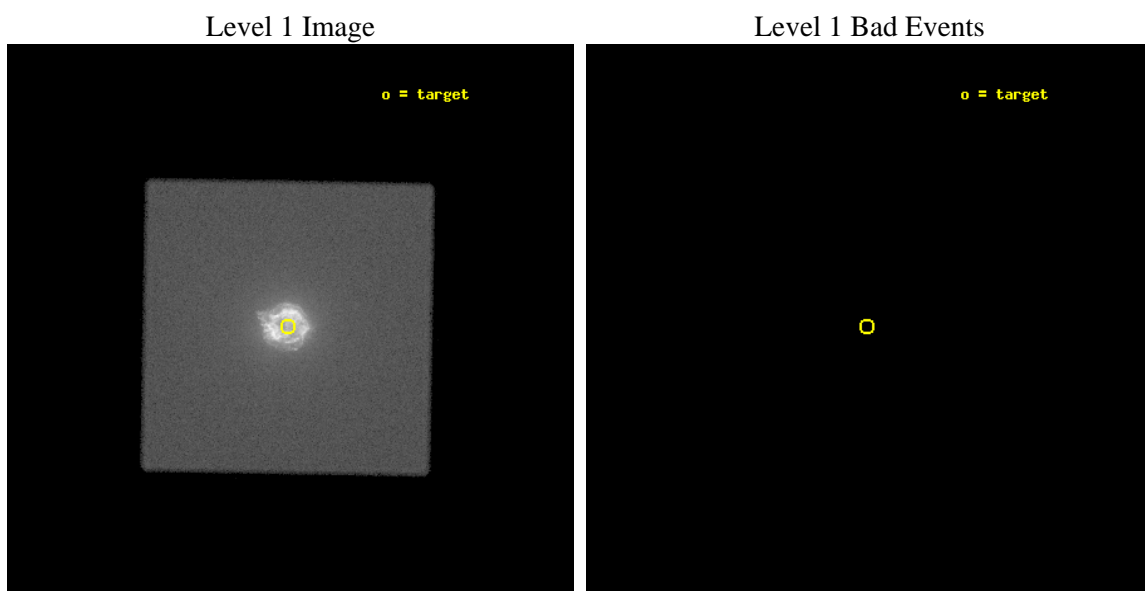
seq_num	580359	Sequence number
obs_id	1409	Observation id
title	HRC RESPONSE TO CASA	Proposal title
observer	Dr. CXC Calibration	Principal investigator
object	CAS A [HRC-I, Offsets=0,0,0]	Source name
ra_targ	350.8575	Observer's specified target RA
dec_targ	58.814833	Observer's specified target Dec
ra_nom	350.84892192408	Nominal RA
dec_nom	58.812948571439	Nominal Dec
roll_nom	225.96036419538	Nominal Roll
revision	4	Processing version of data
ontime	0.0	[s]
livetime	0.0	Ontime multiplied by DTCOR
l2events	0	Number of level 2 events



2 OBI

2.1 OBI

2.1.1 Images



2.1.2 Parameters

obi_num	0	Obi number	sched_exp_time	10000.000000	Scheduled observation exposure time
ascdsver	8.1.1	Processing system revision	ontime	0.0	[s]
caldbver	4.1.4	 	ll events	2016459	Number of level 1 events
date	2009-11-20T13:42:09	Date and time of file creation			
revision	4	Processing version of data			

2.1.3 Events

Level 1 Events

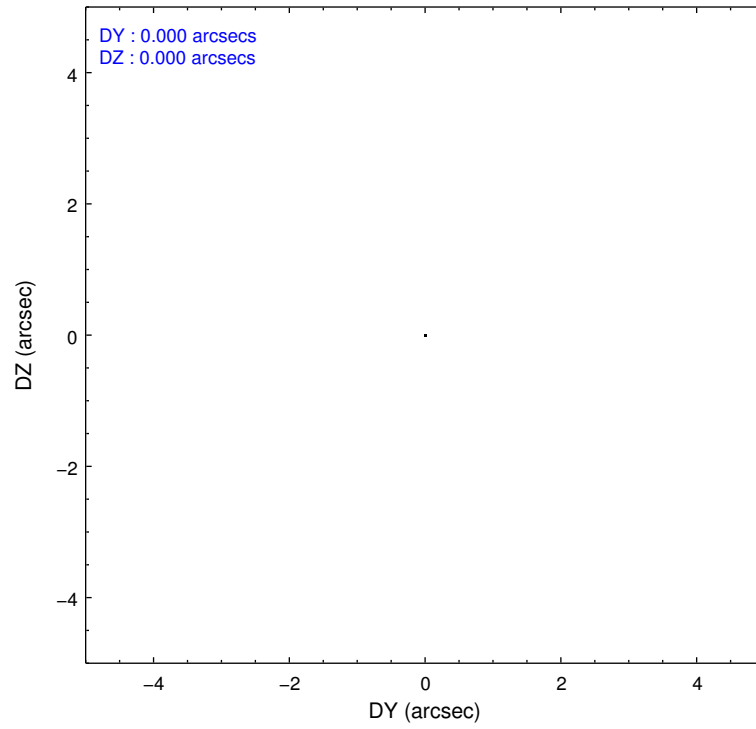
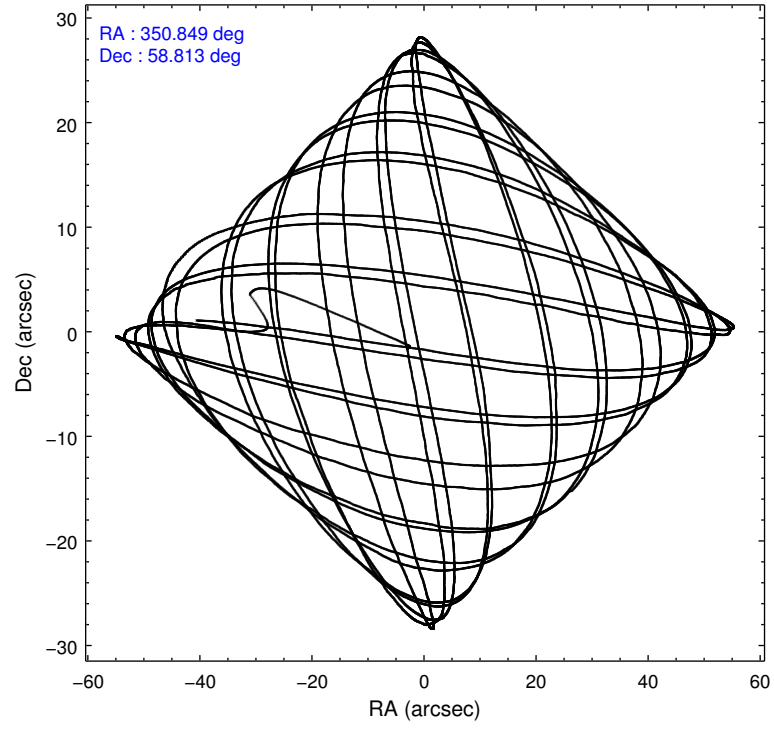
	segment 0
level 1 events	2016459
rejected events	0
rejected %	0%

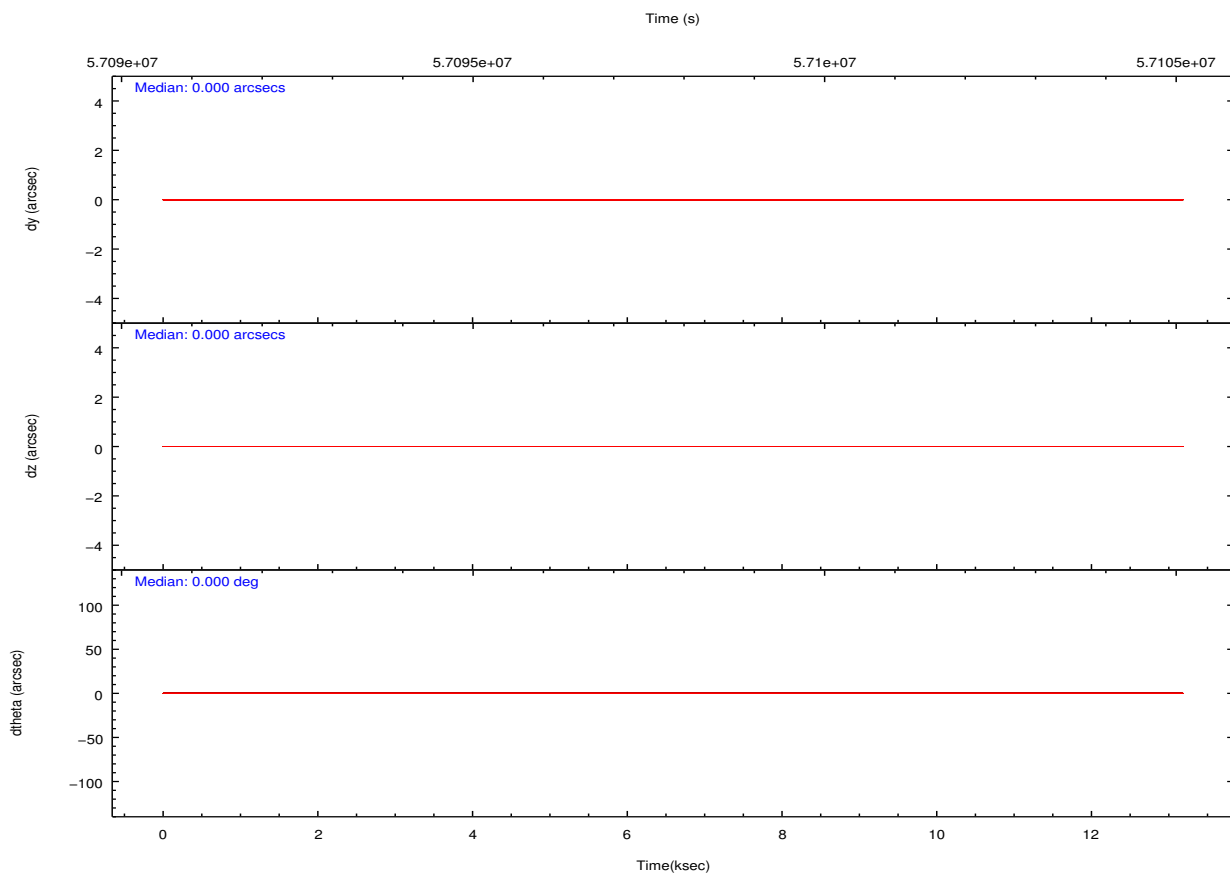
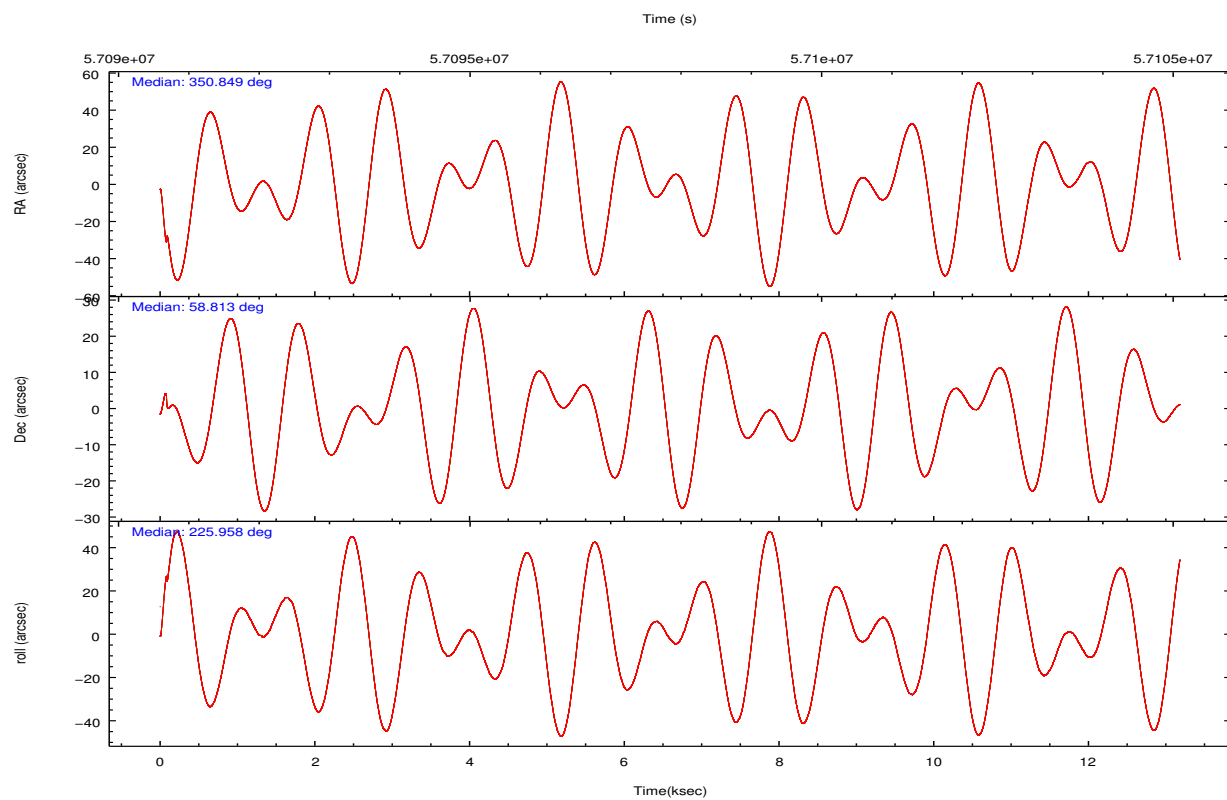
2.2 Compared Parameters

Parameter	Planned	Actual
Instrument	HRC	HRC
Detector	HRC-I	HRC-I
Grating	NONE	NONE
Data mode	OBSERVING	OBSERVING
Observation mode	POINTING	POINTING
Pointing RA	350.861627	350.8489219240797
Pointing Dec	58.839631	58.81294857143901
Pointing Roll	226.044986	225.9603641953768
SIM focus pos (mm)	-1.040293	-1.038866356238299
SIM defocus (mm)	0	0.001426264420575141
SIM translation stage pos (mm)	126.985494	126.9829799899862
SIM translation stage offset (mm)	0	0.002508901615314585
Observation start time	57091694.184000	57090638.381625
Observation start date	1999-10-23T18:47:10	1999-10-23T18:30:38
Observation end time	57101694.184000	57104574.794628
Observation end date	1999-10-23T21:33:50	1999-10-23T22:22:54

Parameter	Planned	Actual
Obspar format version number	6	6
Obspar file type	PREDICTED	ACTUAL
Obspar update status	NONE	UPDATED

2.3 Aspect



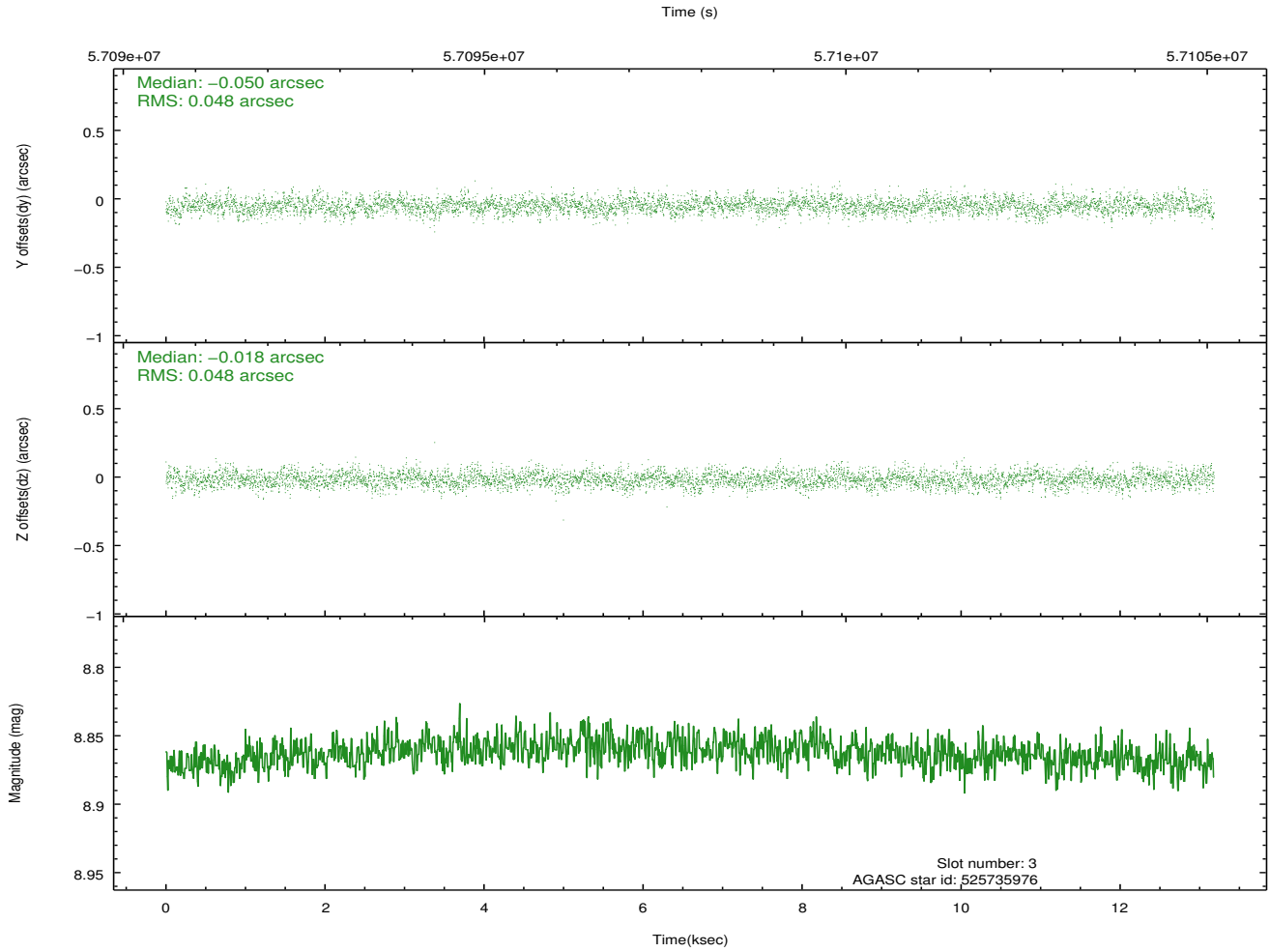
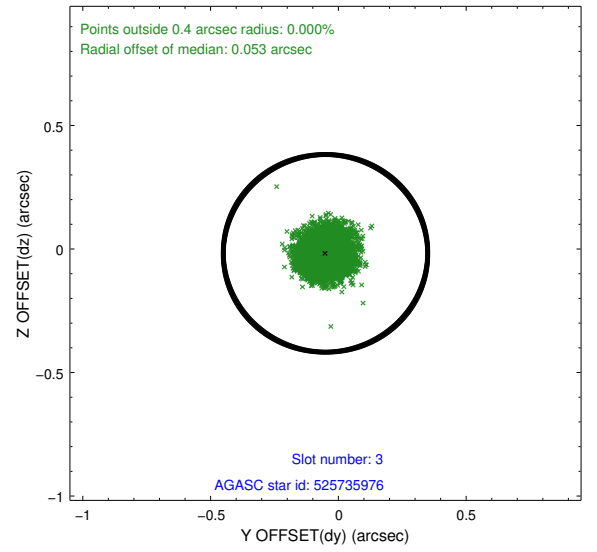
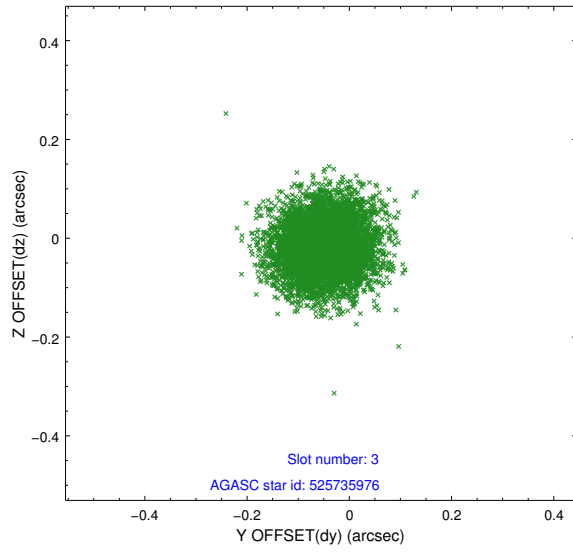


Slot Statistics

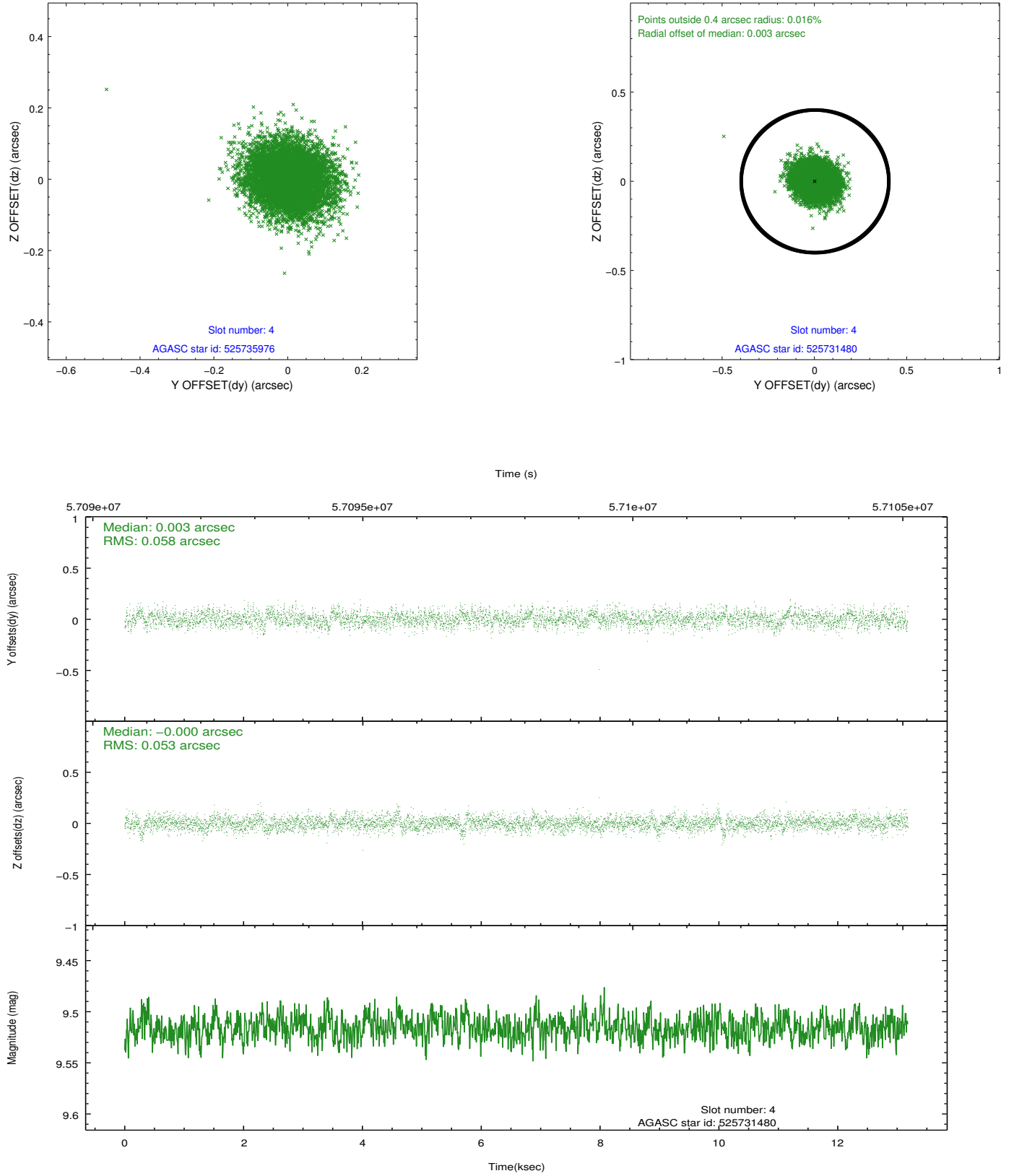
slot	status	id	mag	n_pts	med_dy	med_dz	drl	dr2	ra	dec	mean_y	mean_z
0	UNUSED		0.00	0	0.000	0.000	0.000	0.000	0.000000	0.000000	0.00	0.00
1	UNUSED		0.00	0	0.000	0.000	0.000	0.000	0.000000	0.000000	0.00	0.00
2	UNUSED		0.00	0	0.000	0.000	0.000	0.000	0.000000	0.000000	0.00	0.00
3	GUIDE	525735976	8.86	6424	-0.050	-0.018	0.072	0.118	350.142956	58.277622	2395.45	420.84
4	GUIDE	525731480	9.52	6425	0.003	-0.000	0.083	0.136	351.647209	58.687294	-631.21	1433.51
5	GUIDE	525732528	9.37	6424	0.006	0.065	0.079	0.128	351.607241	59.298932	-2147.05	-165.50
6	GUIDE	525737208	9.37	6420	-0.015	-0.054	0.082	0.130	351.154109	59.407897	-1845.77	-1034.45
7	GUIDE	525606576	9.45	6419	0.056	0.002	0.112	0.170	349.543555	58.678895	2110.99	-1390.13

2.4 Star Slots

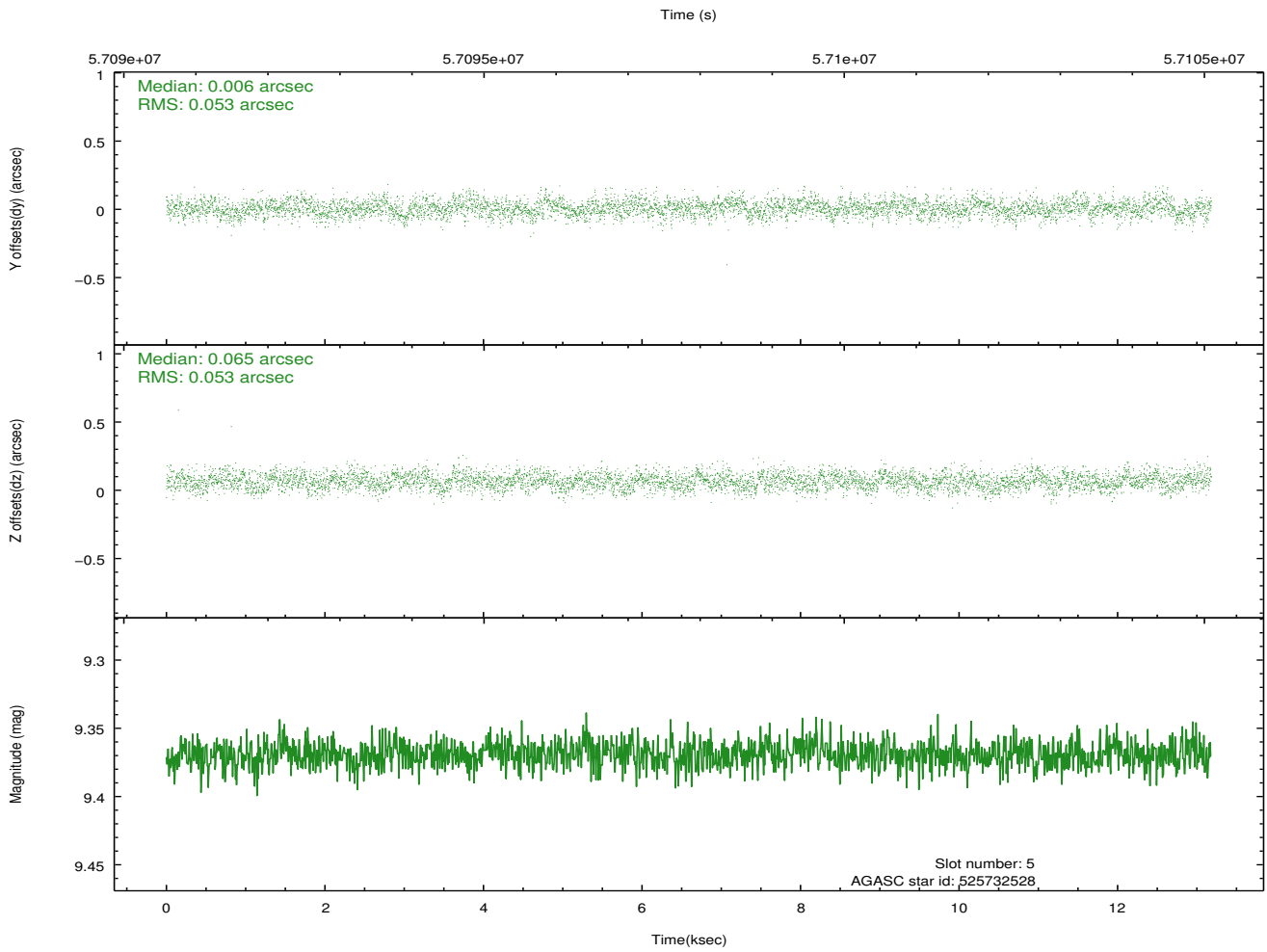
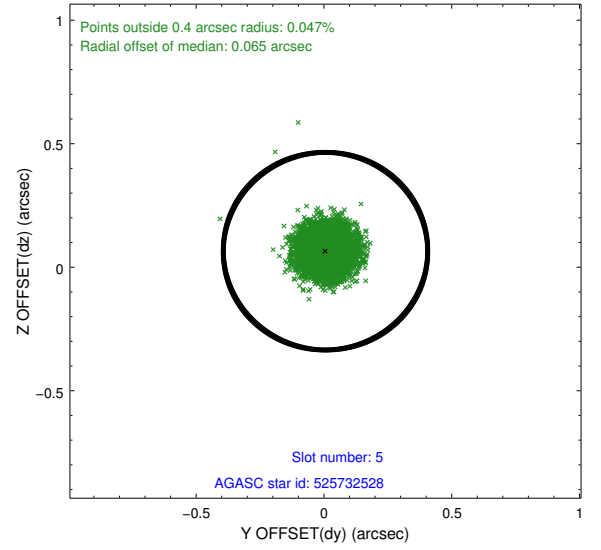
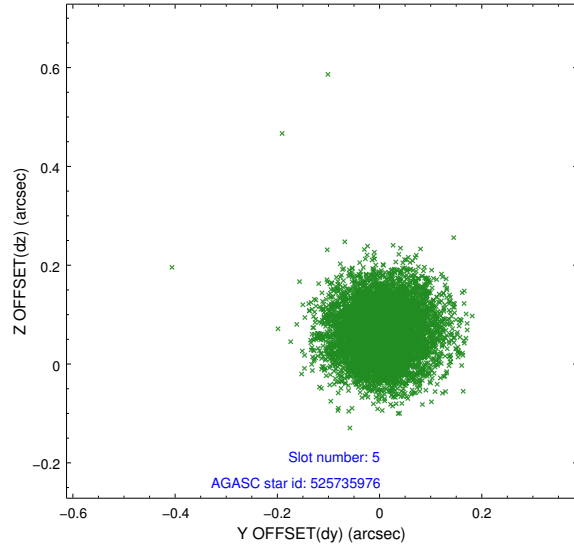
2.4.1 Slot 3



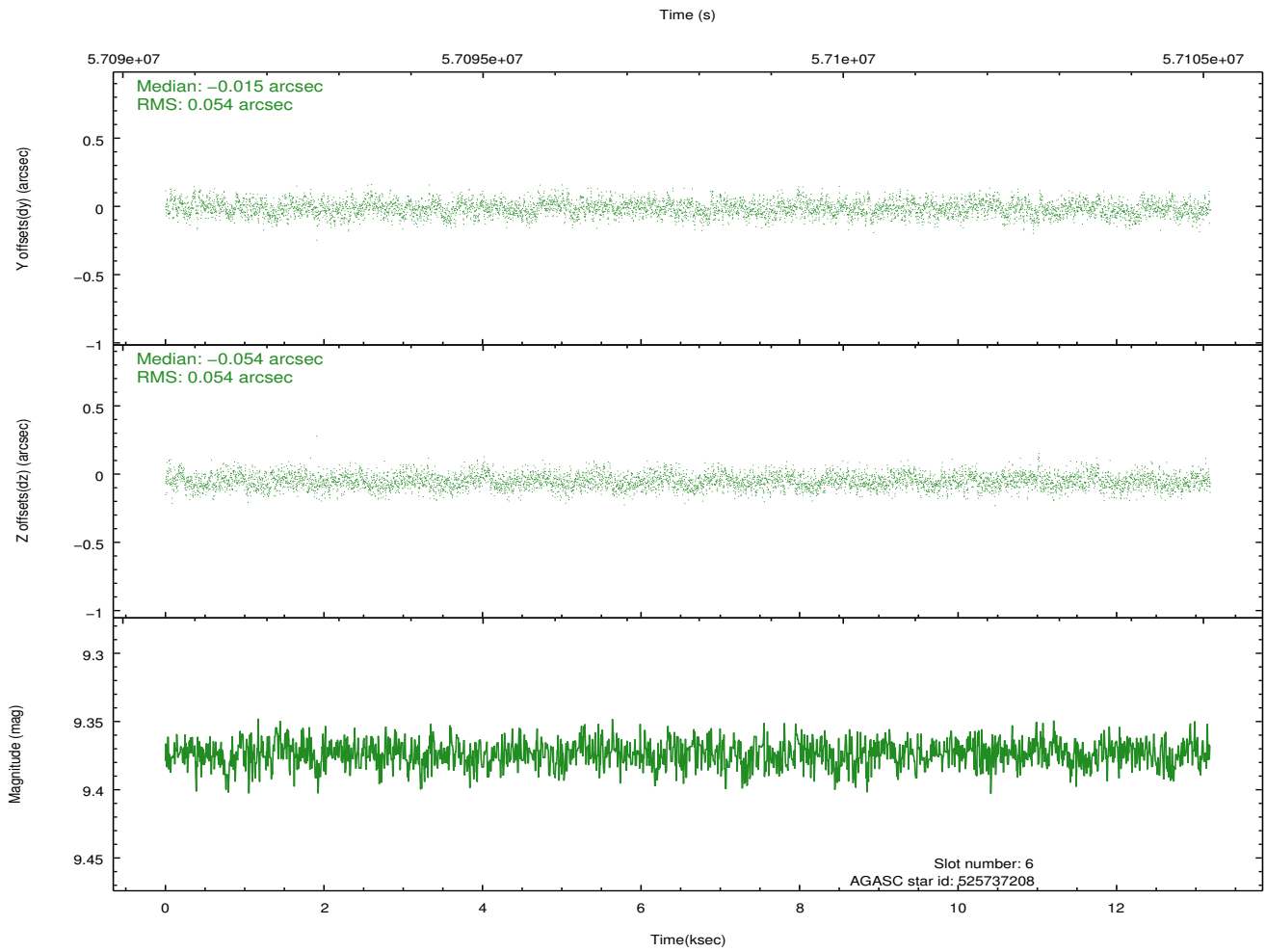
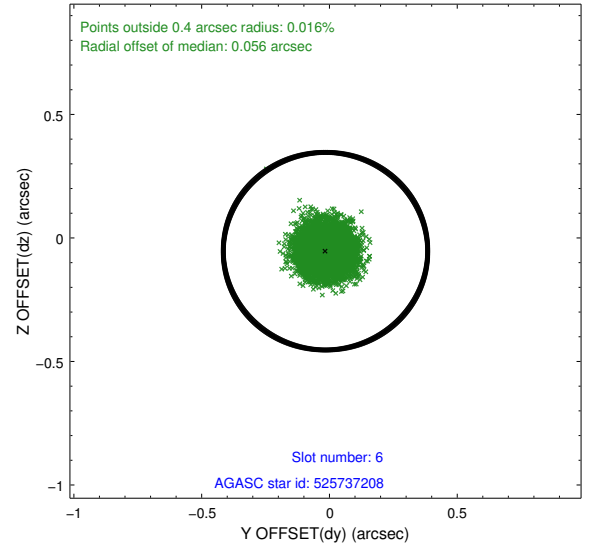
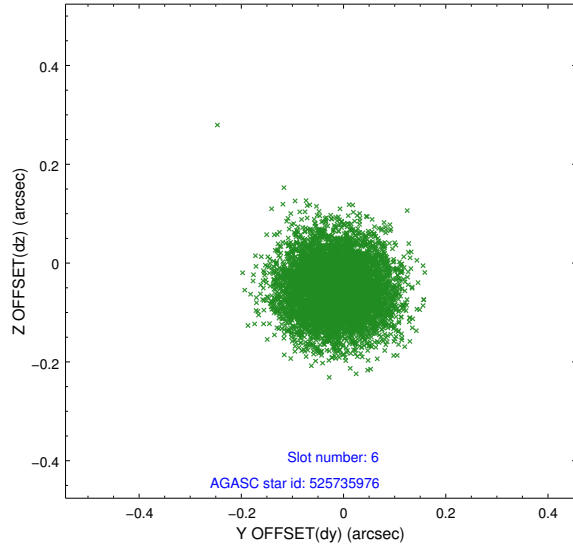
2.4.2 Slot 4



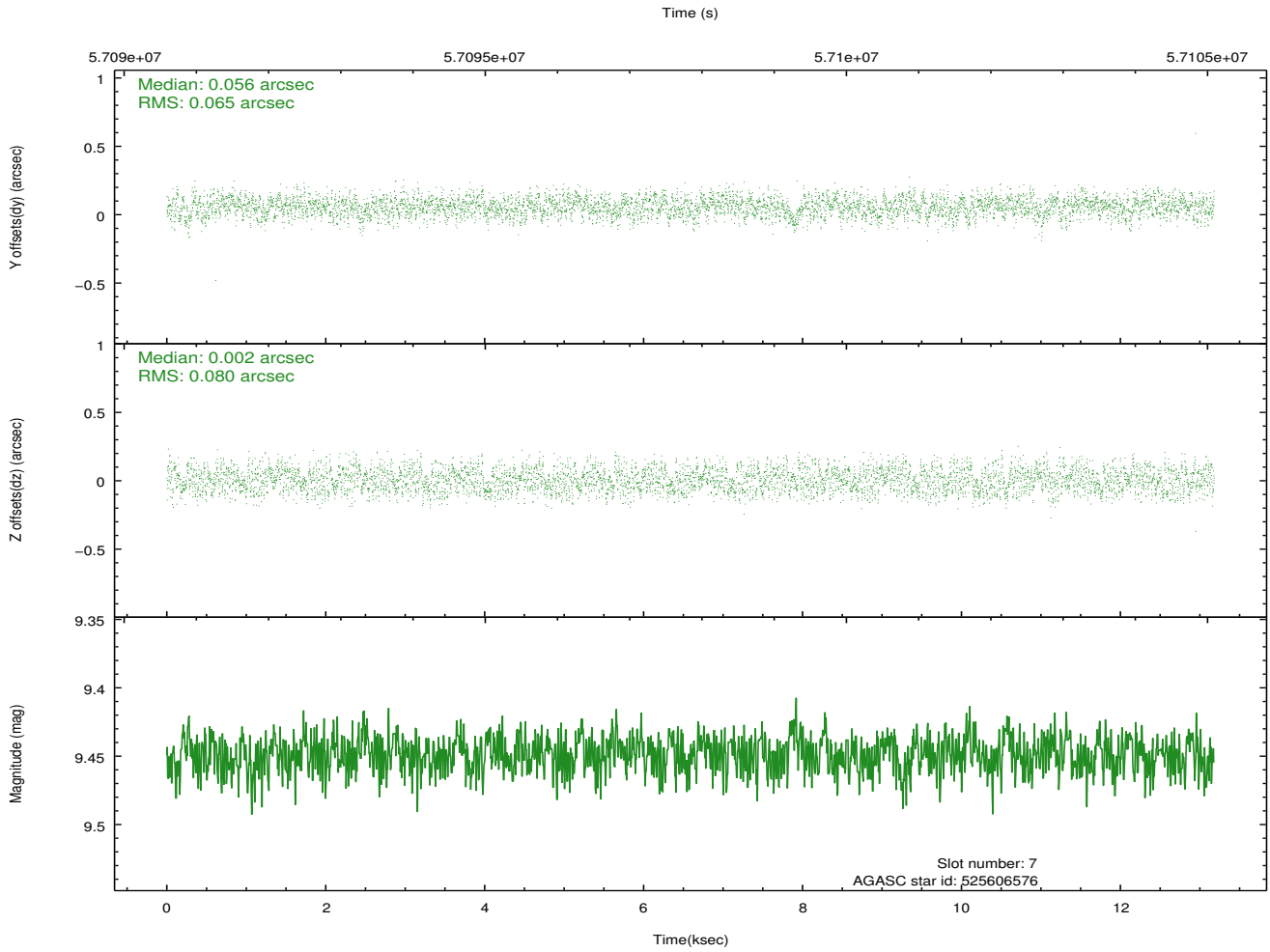
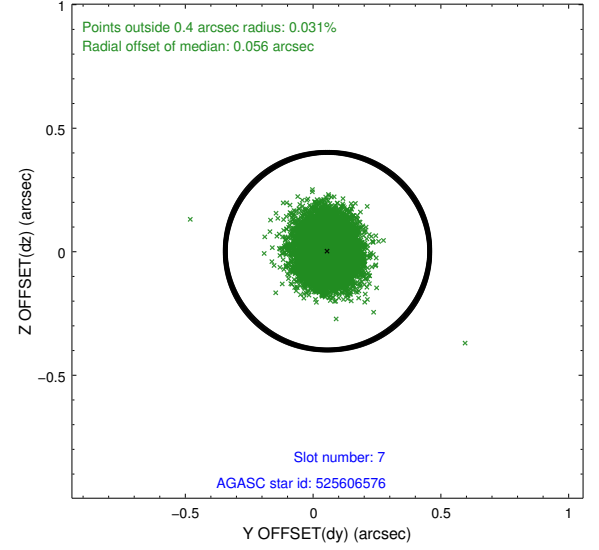
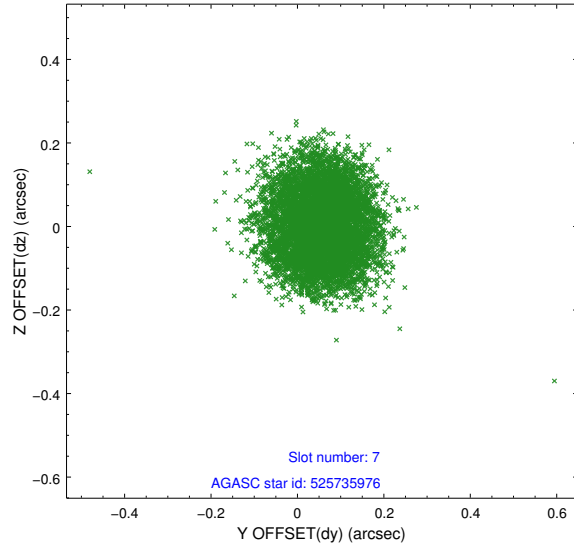
2.4.3 Slot 5



2.4.4 Slot 6



2.4.5 Slot 7



2.5 FID Slots

3 Point Sources

A Summary

A.1 Status

V&V Scientist	Joy Nichols
V&V Date (YYYY-MM-DD)	2009.11.23
V&V Edition	1
V&V Disposition and Status	OK
V&V Charge Time	0

A.2 Comments

No fid lights were used during this observation, so there is no Good Time Interval. As a result, there are no Level 2 events. However, the Level 1 event energy data are good. The aspect solution is compromised.

=====

Spike in count rate from about 60 counts per second up to 150 counts per second between 8 and 13 ksec into the observation.

=====

Charge time:

New charge time is less than existing charge time used in previously distributed version

NEW CHARGE TIME = 0.000000 ks, 1 Obis

EXISTING CHARGE TIME = 10.000000 ks, 1 Obis.