

V&V Reference Report

L2 ASCDS Version : 8.1.1

Observation 1459 - L2 Version 4

Chandra X-Ray Center

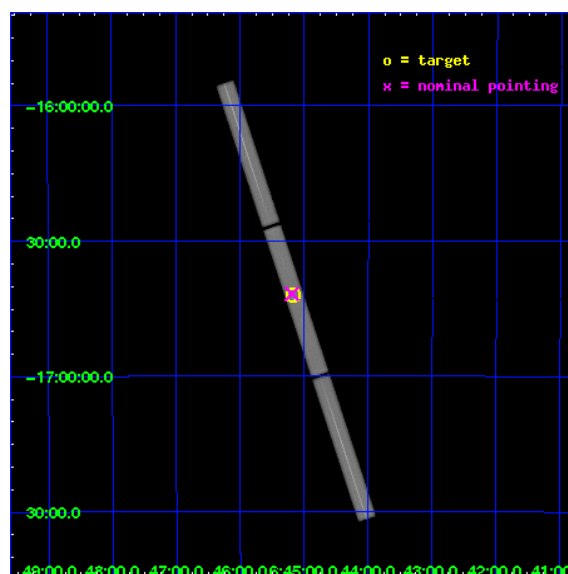
L2 Processing Date : Nov 20 2009

Contents

1	Front	2
2	OBI	3
2.1	OBI	3
2.1.1	Images	3
2.1.2	Parameters	4
2.1.3	Events	4
2.2	Compared Parameters	5
2.3	Aspect	6
2.4	Star Slots	9
2.4.1	Slot 3	9
2.4.2	Slot 4	10
2.4.3	Slot 5	11
2.4.4	Slot 6	12
2.4.5	Slot 7	13
2.5	FID Slots	14
2.5.1	Slot 0	14
2.5.2	Slot 1	15
2.5.3	Slot 2	16
3	Gratings	17
3.1	LETG Arm	17
A	Summary	19
A.1	Status	19
A.2	Comments	19

1 Front

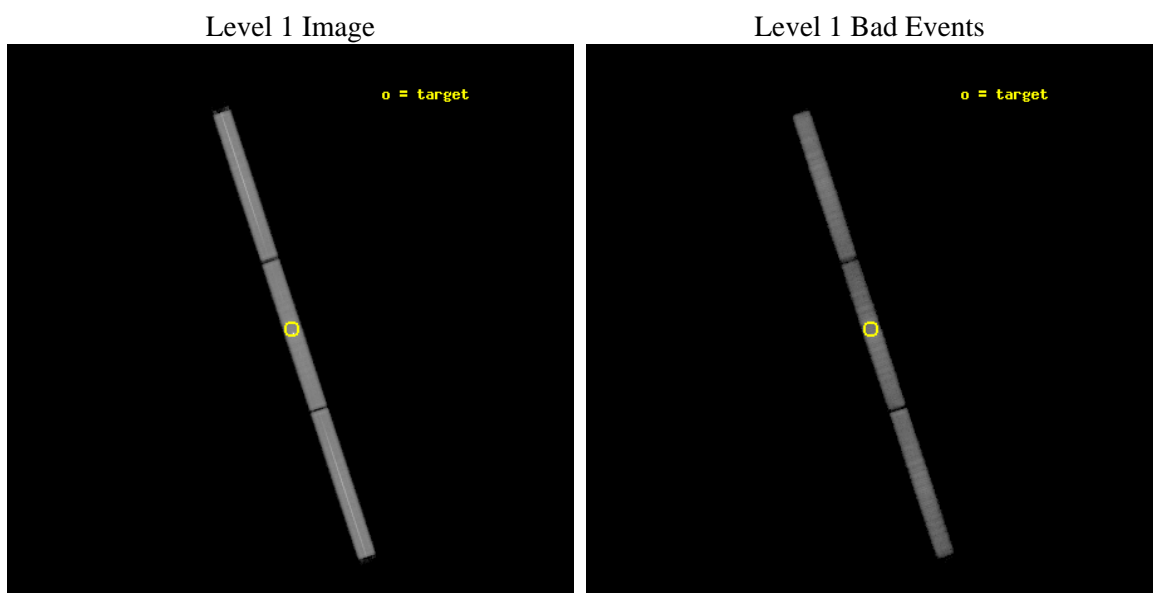
seq_num	280409	Sequence number
obs_id	1459	Observation id
title	 	Proposal title
observer	Dr. CXC Calibration	Principal investigator
object	SIRIUS B	Source name
ra_targ	101.295833	Observer's specified target RA
dec_targ	-16.701389	Observer's specified target Dec
ra_nom	101.29834782114	Nominal RA
dec_nom	-16.696429751704	Nominal Dec
roll_nom	71.616828871539	Nominal Roll
revision	4	Processing version of data
ontime	12003.006682955	[s]
livetime	11910.720201595	Ontime multiplied by DTCOR
l2events	666645	Number of level 2 events



2 OBI

2.1 OBI

2.1.1 Images



2.1.2 Parameters

obi_num	0	Obi number	sched_exp_time	11800.000000	Scheduled observation exposure time
ascdsver	8.1.1	Processing system revision	ontime	12003.006682955	[s]
caldbver	4.1.4	 	ll events	1028440	Number of level 1 events
date	2009-11-20T16:37:38	Date and time of file creation			
revision	4	Processing version of data			

2.1.3 Events

Level 1 Events

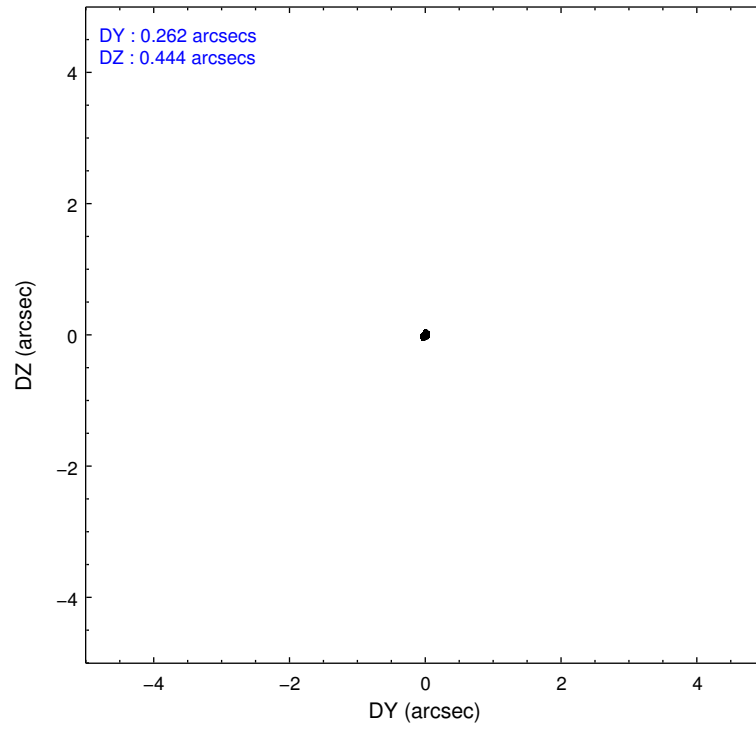
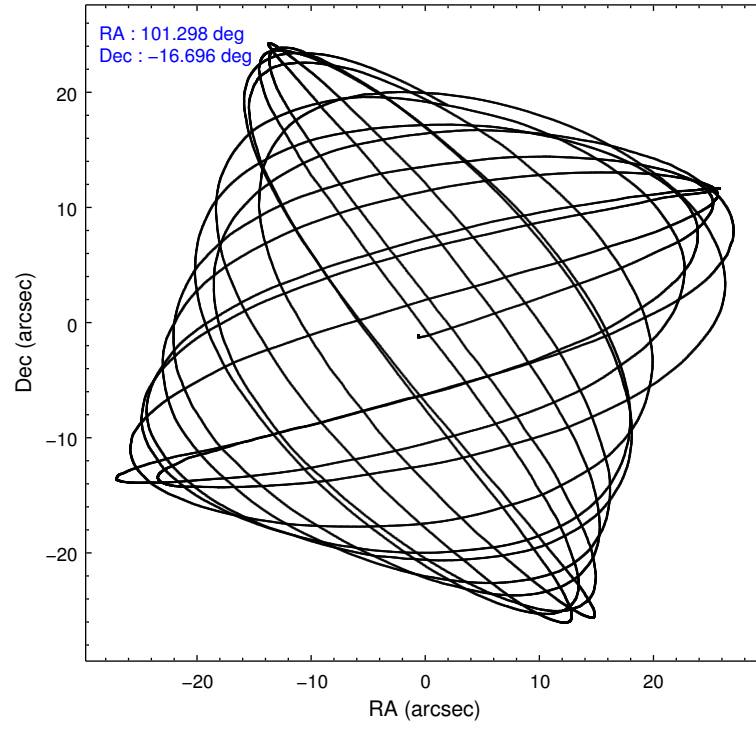
	segment 1	segment 2	segment 3
level 1 events	348835	322540	357065
rejected events	84194	88736	101793
rejected %	24%	27%	28%

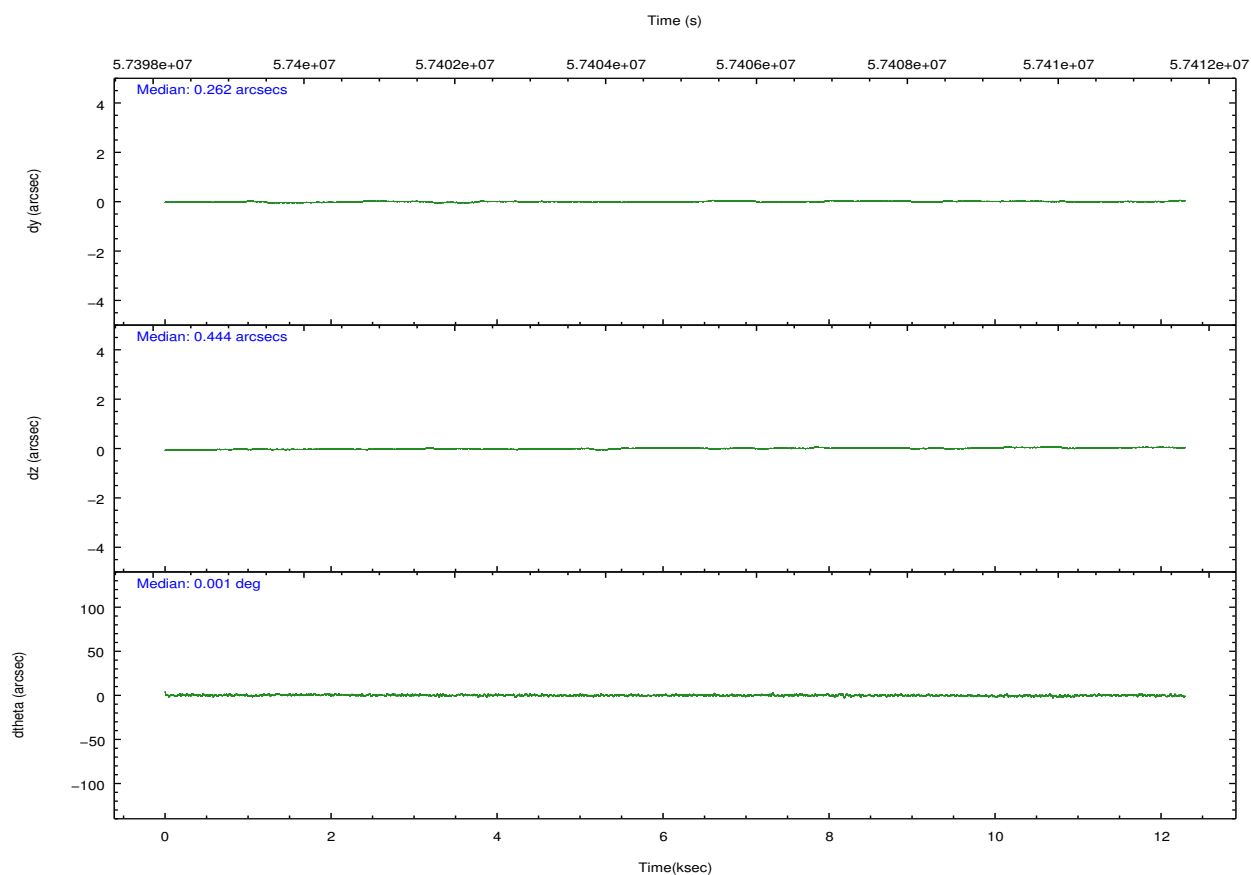
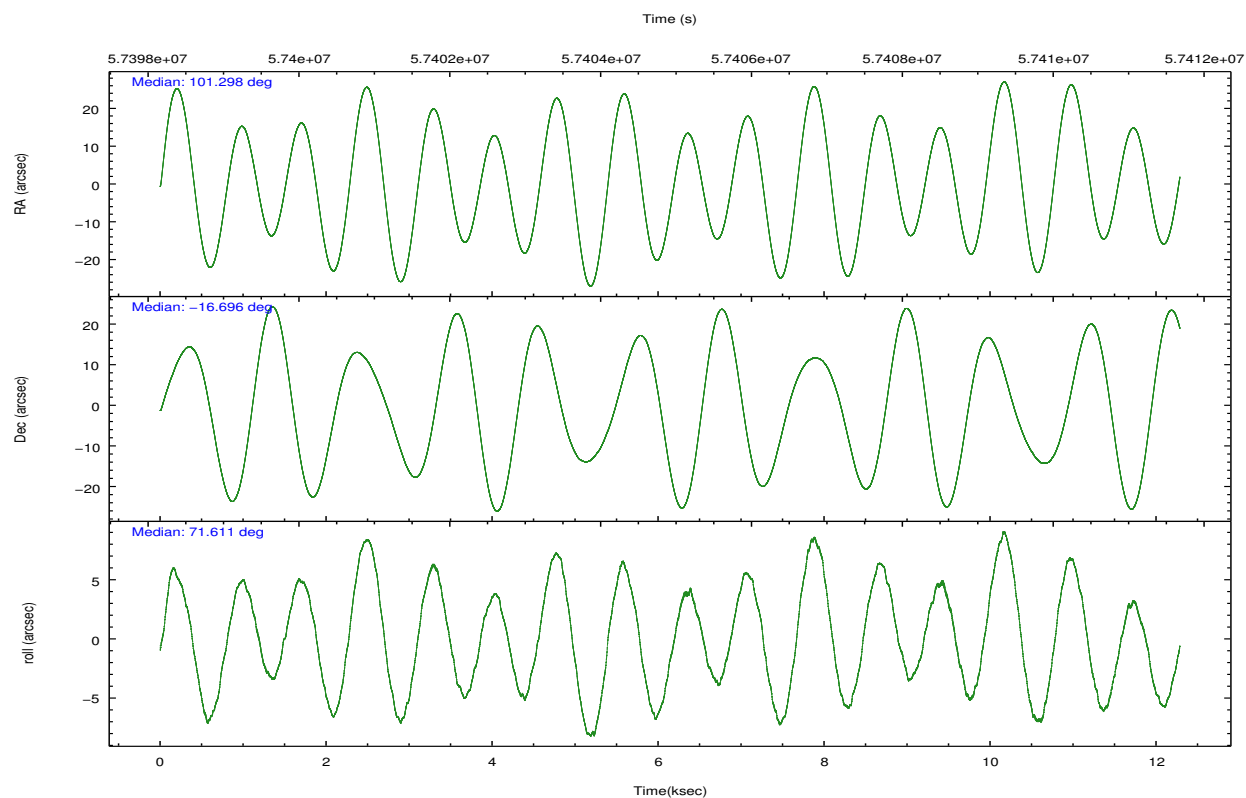
2.2 Compared Parameters

Parameter	Planned	Actual
Instrument	HRC	HRC
Detector	HRC-S	HRC-S
Grating	LETG	LETG
Data mode	OBSERVING	OBSERVING
Observation mode	POINTING	POINTING
Pointing RA	101.304963	101.2983478211448
Pointing Dec	-16.724690	-16.69642975170449
Pointing Roll	71.551380	71.61682887153908
SIM focus pos (mm)	-1.429586	-1.508139491973113
SIM defocus (mm)	0.1037507710433287	0.02519714743118384
SIM translation stage pos (mm)	250.455976	250.466033080201
SIM translation stage offset (mm)	0	-0.01005468664627074
Observation start time	57399264.184000	57398522.767728
Observation start date	1999-10-27T08:13:20	1999-10-27T08:02:02
Observation end time	57411064.184000	57411738.605704
Observation end date	1999-10-27T11:30:00	1999-10-27T11:42:18

Parameter	Planned	Actual
Obspar format version number	6	6
Obspar file type	PREDICTED	ACTUAL
Obspar update status	NONE	UPDATED

2.3 Aspect



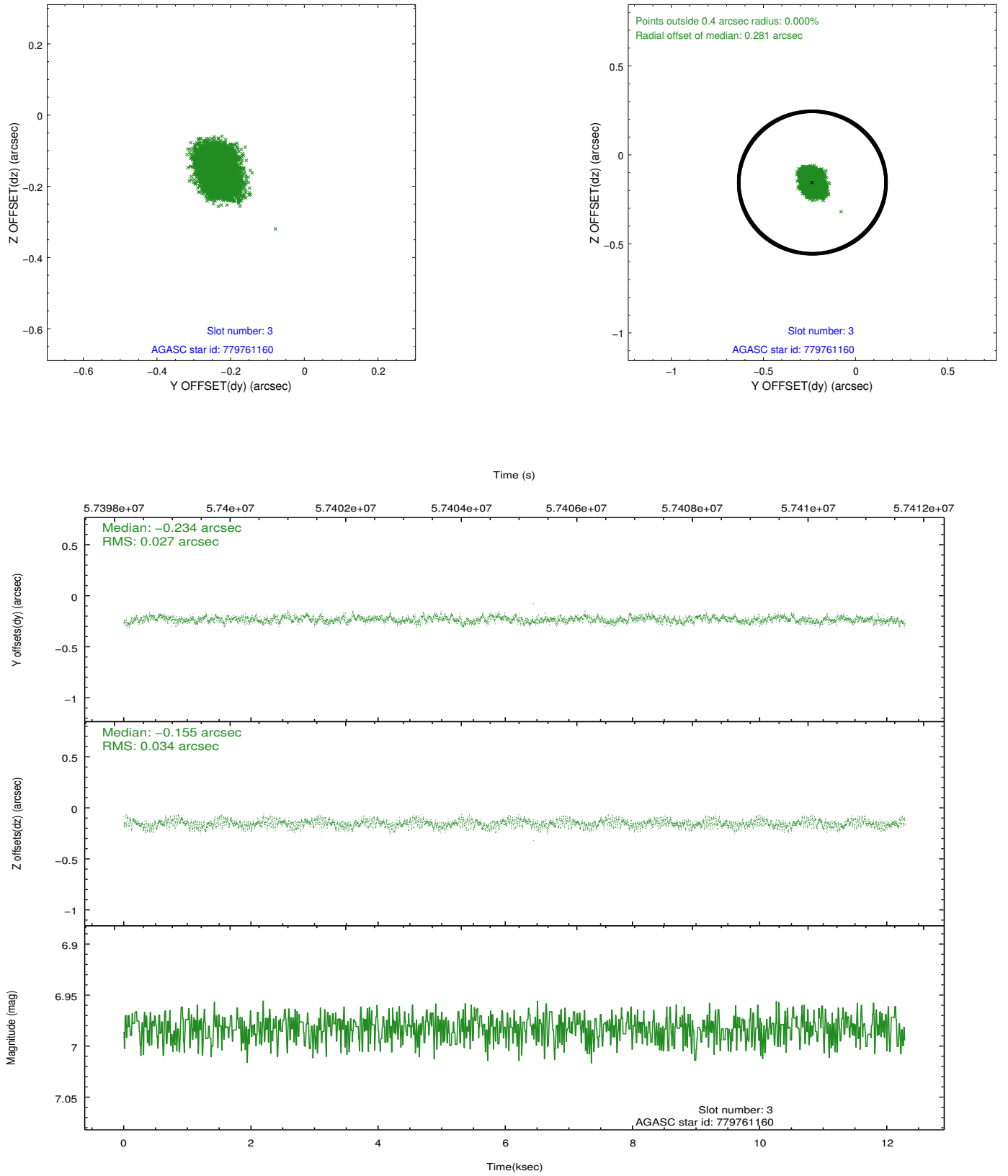


Slot Statistics

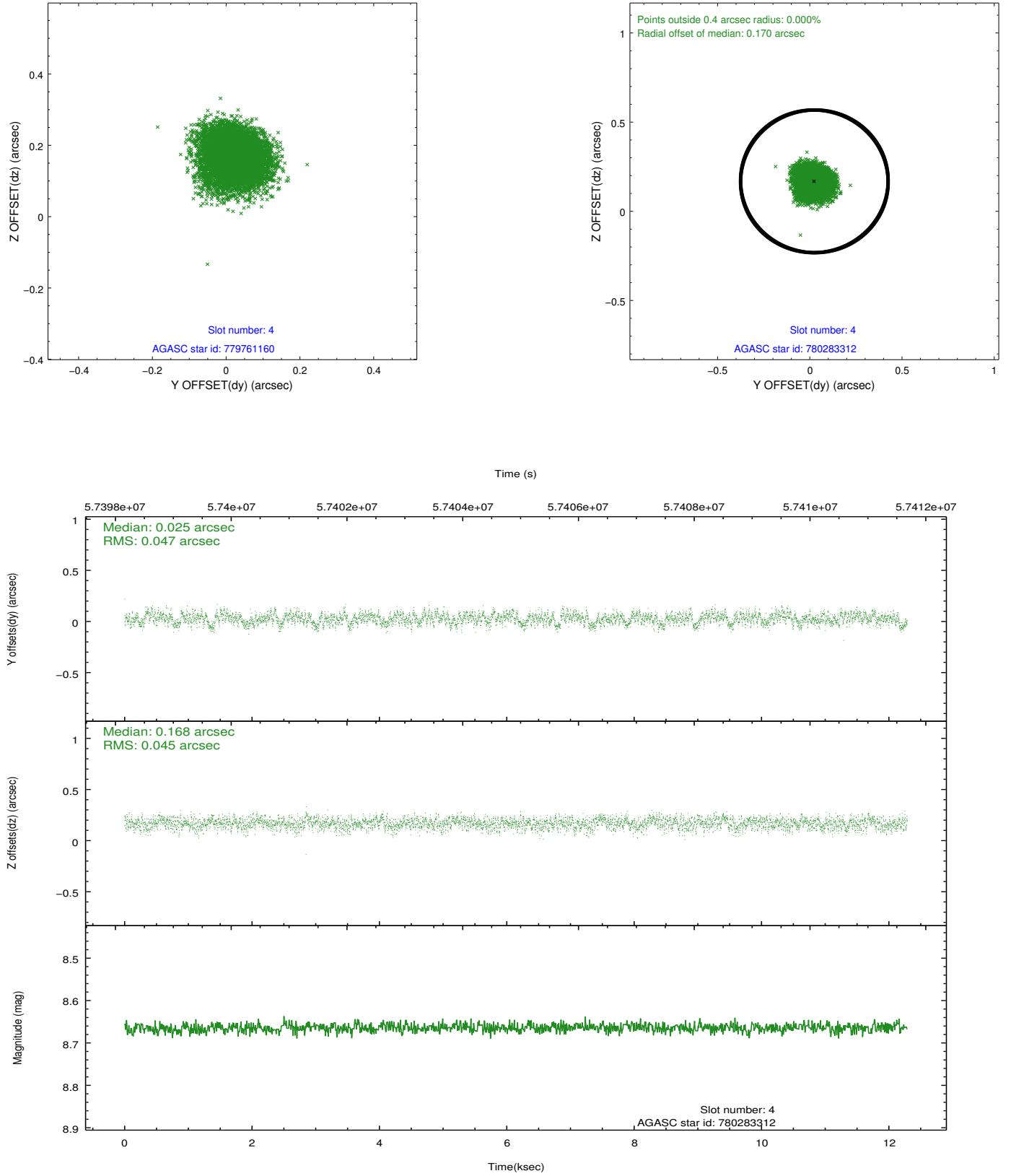
slot	status	id	mag	n_pts	med_dy	med_dz	dr1	dr2	ra	dec	mean_y	mean_z
0	FID	HRC-S-1	6.98	5994	0.133	-0.104	0.004	0.008	0.000000	0.000000	-1154.27	-448.69
1	FID	HRC-S-2	6.97	5995	0.131	-0.030	0.007	0.013	0.000000	0.000000	1245.19	-441.50
2	FID	HRC-S-4	6.97	5995	0.139	-0.170	0.007	0.012	0.000000	0.000000	1244.25	583.09
3	GUIDE	779761160	6.98	5995	-0.234	-0.155	0.046	0.075	100.924262	-16.049952	1885.40	2016.56
4	GUIDE	780283312	8.66	5994	0.025	0.168	0.071	0.111	101.569387	-16.934625	-429.34	-1104.01
5	GUIDE	779762008	10.02	5992	-0.158	-0.032	0.114	0.181	100.965987	-16.073160	1852.13	1853.06
6	GUIDE	780272032	9.43	5988	0.154	0.160	0.071	0.117	101.484293	-17.270688	-1669.65	-1207.88
7	GUIDE	780284960	9.76	5989	0.218	-0.140	0.123	0.190	100.561029	-16.893065	-1391.30	2235.87

2.4 Star Slots

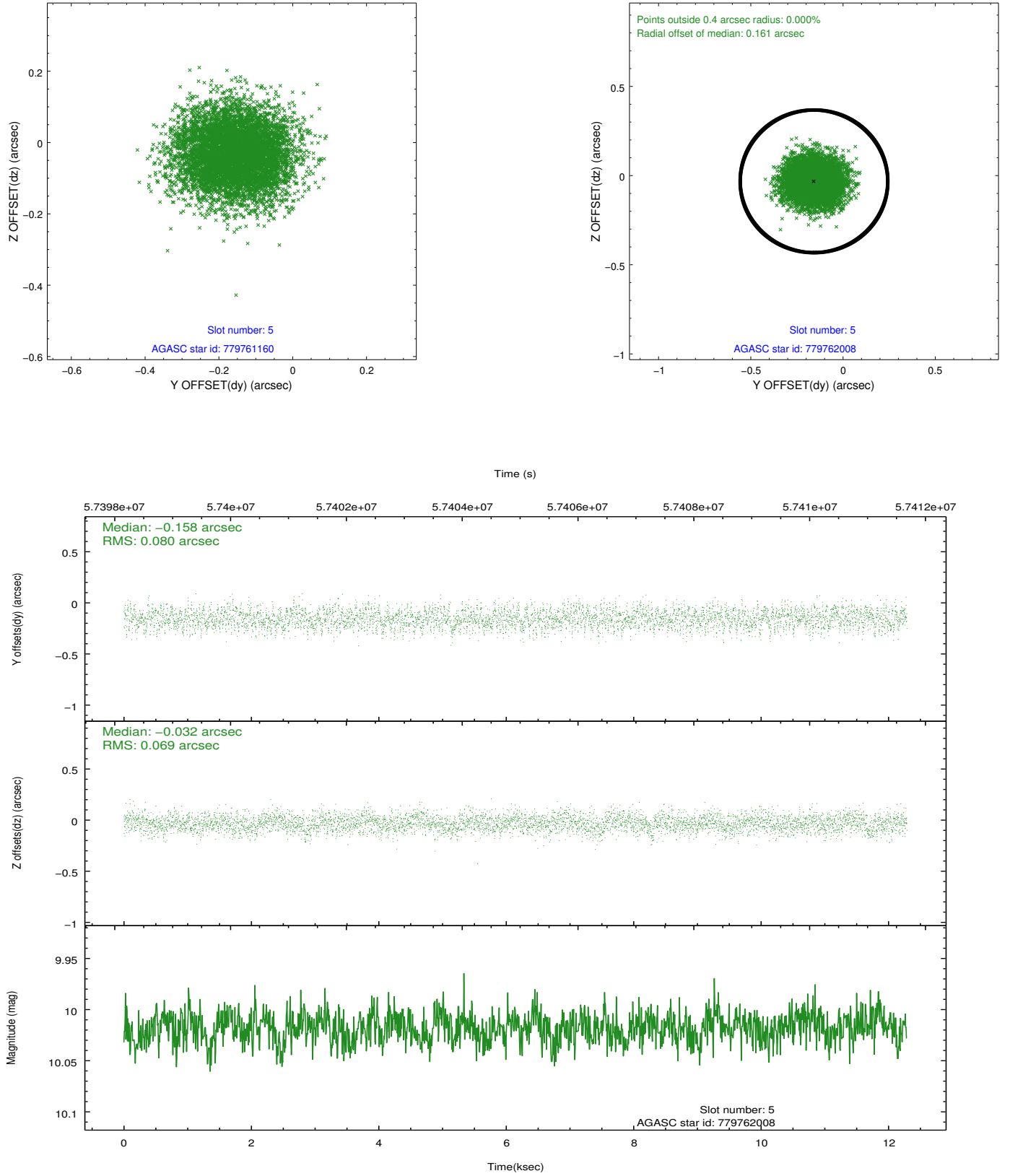
2.4.1 Slot 3



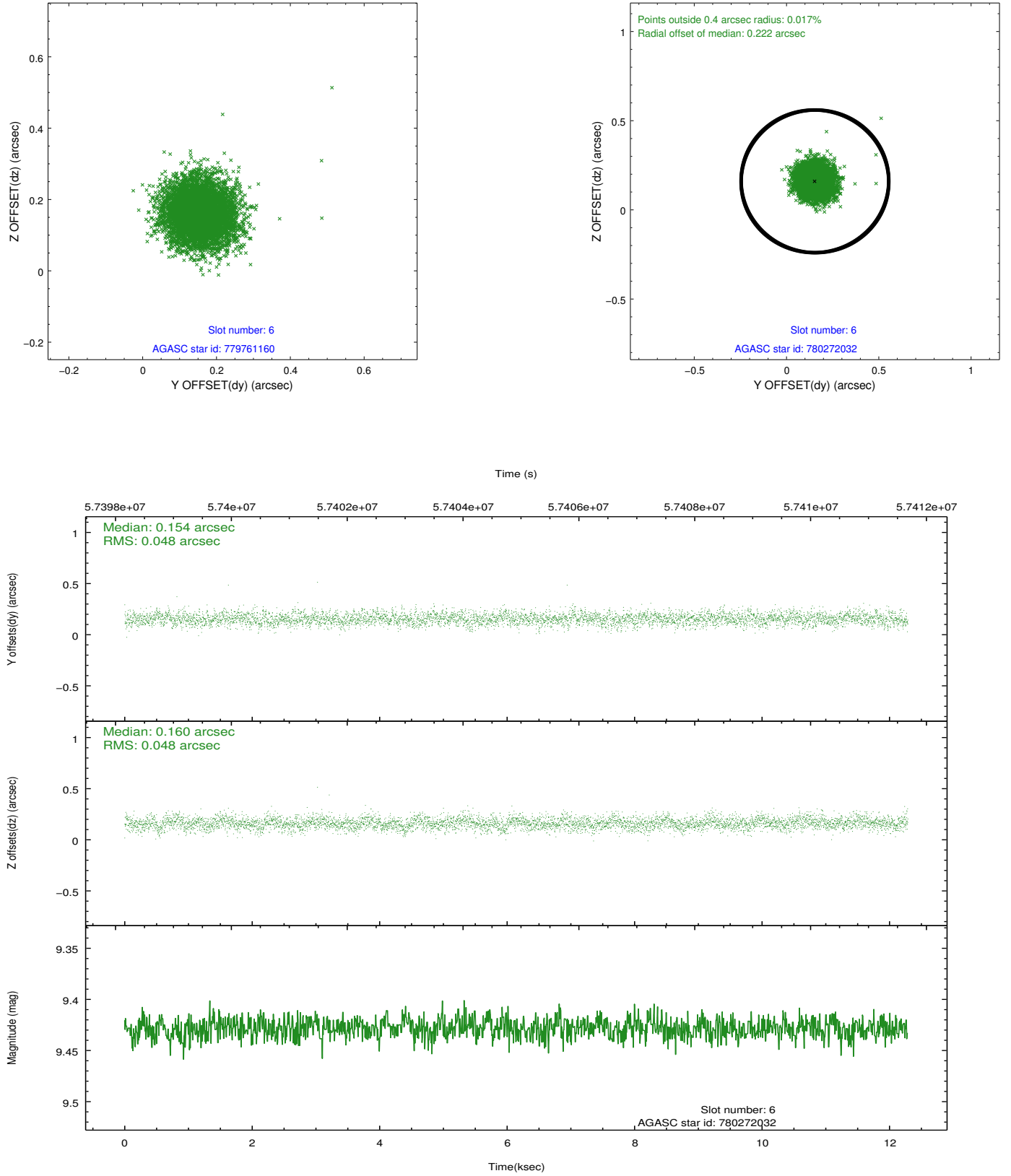
2.4.2 Slot 4



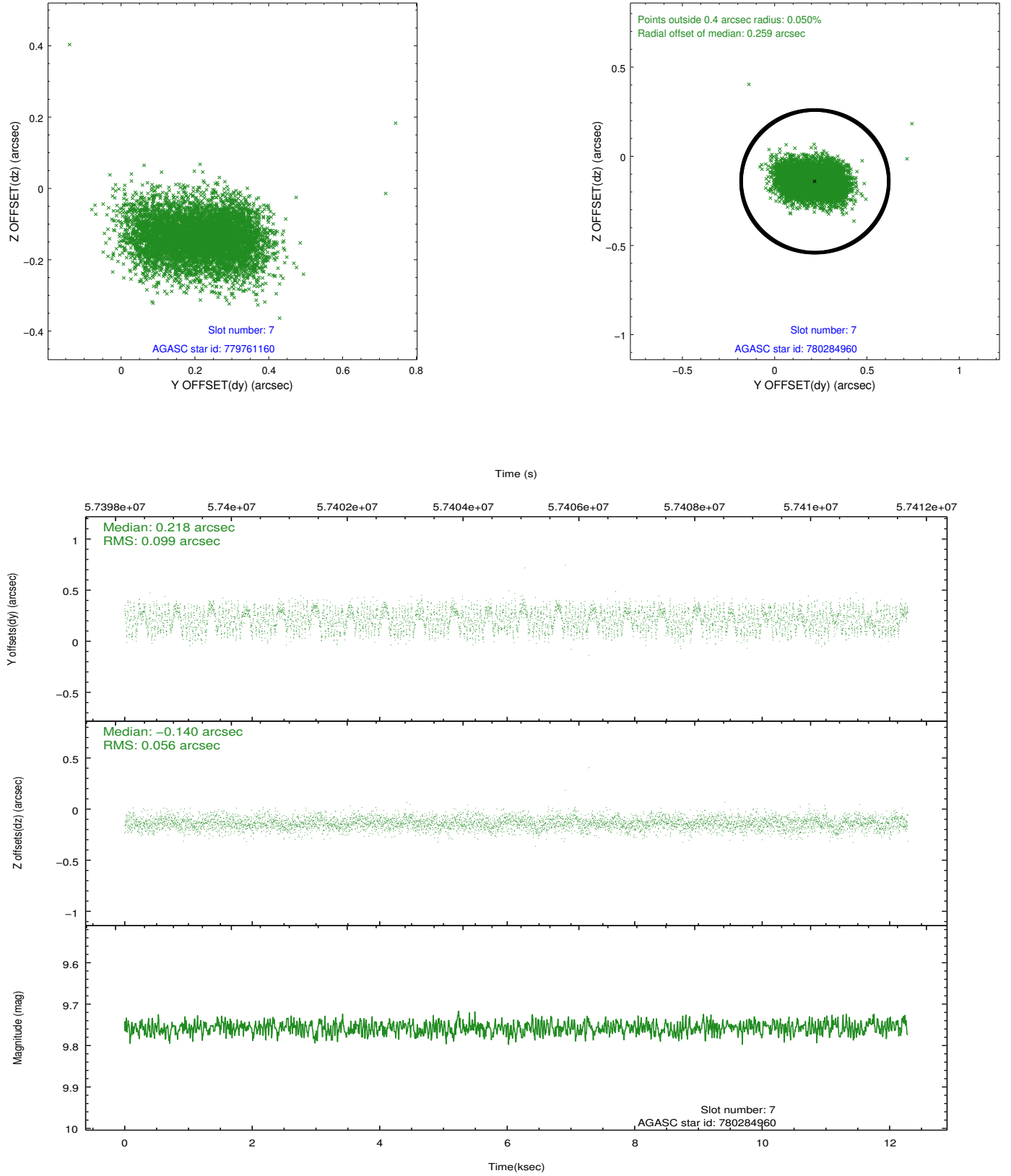
2.4.3 Slot 5



2.4.4 Slot 6

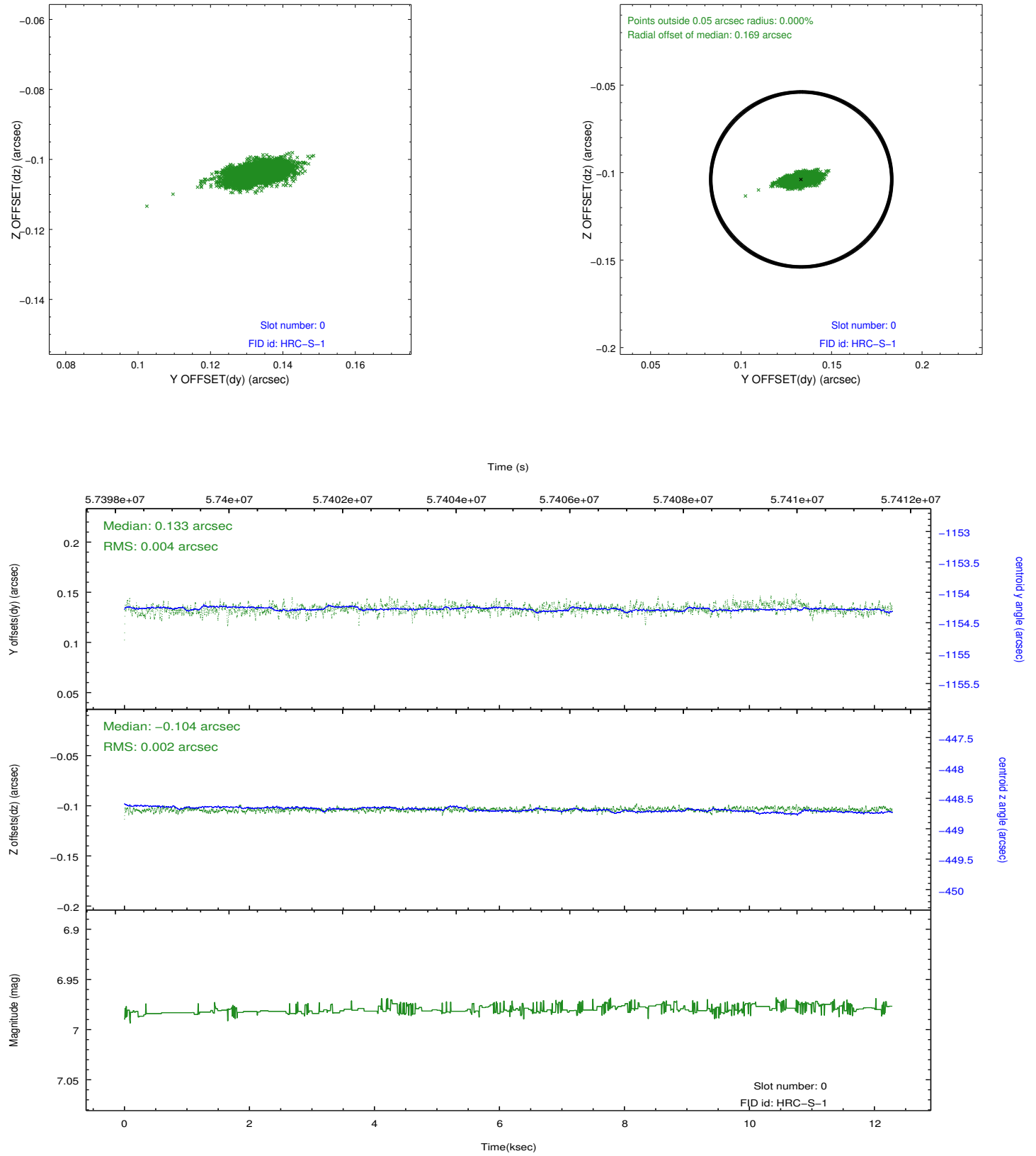


2.4.5 Slot 7

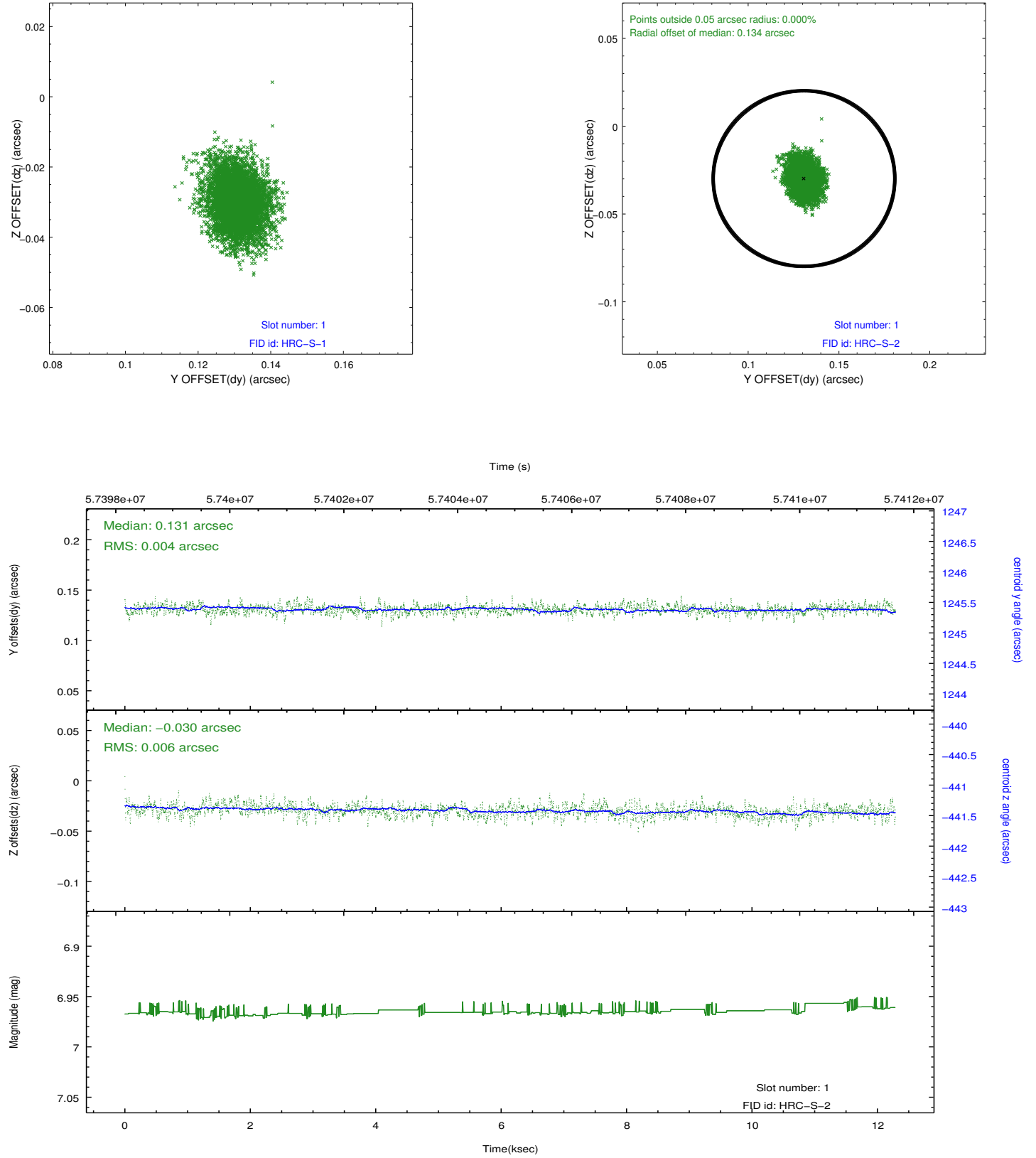


2.5 FID Slots

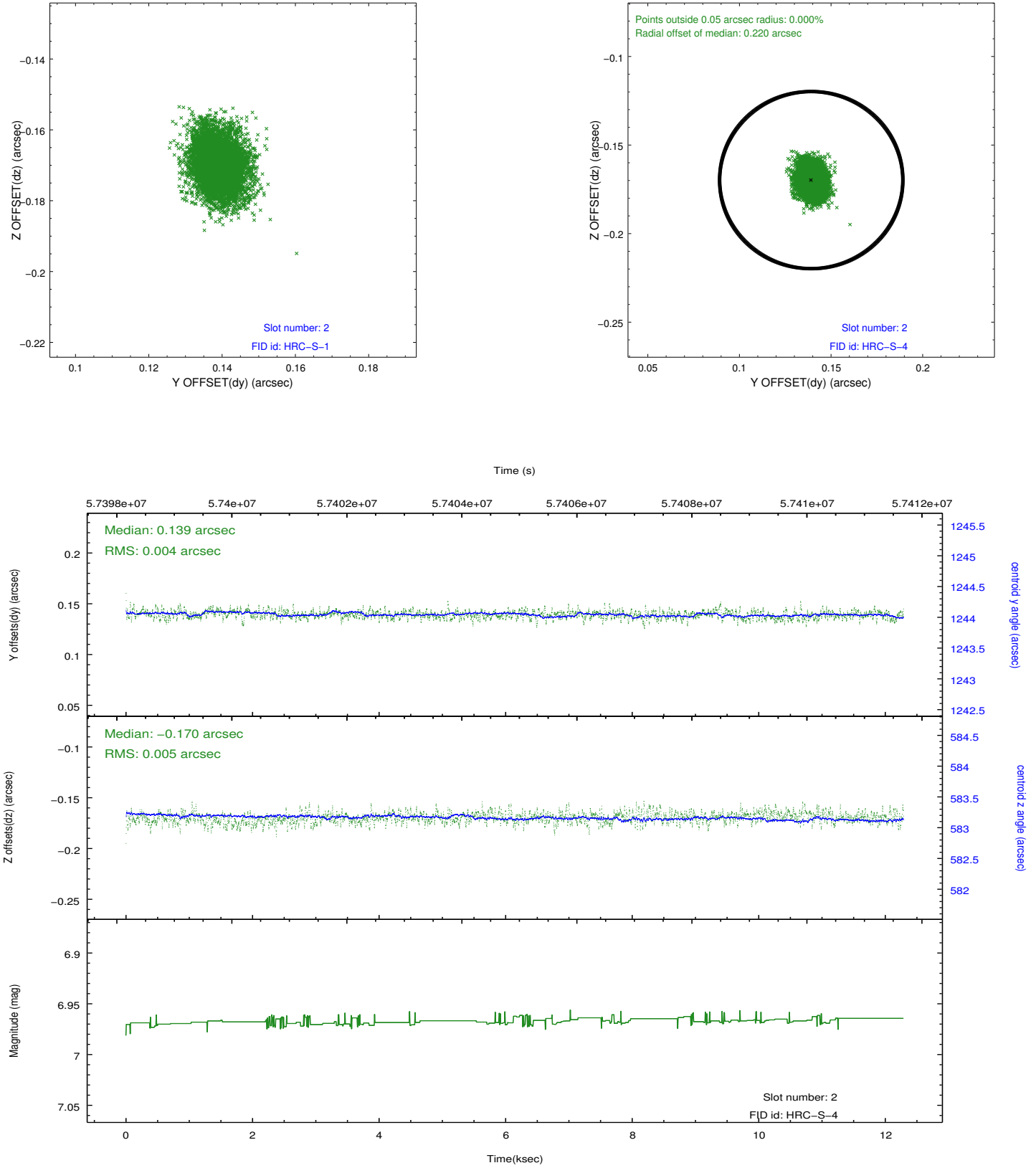
2.5.1 Slot 0



2.5.2 Slot 1

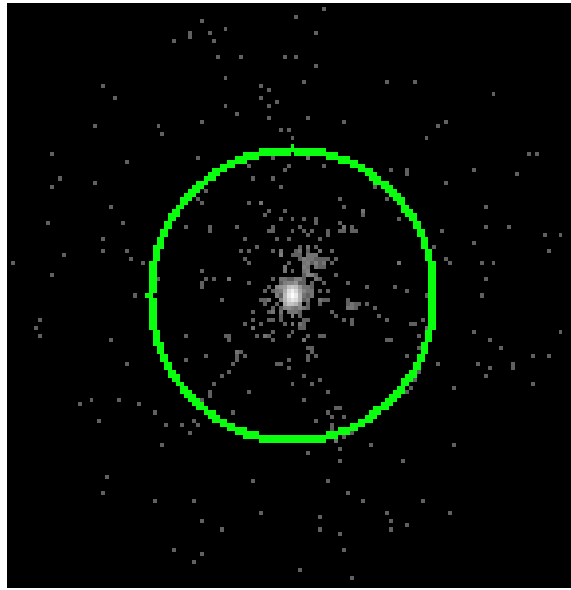


2.5.3 Slot 2

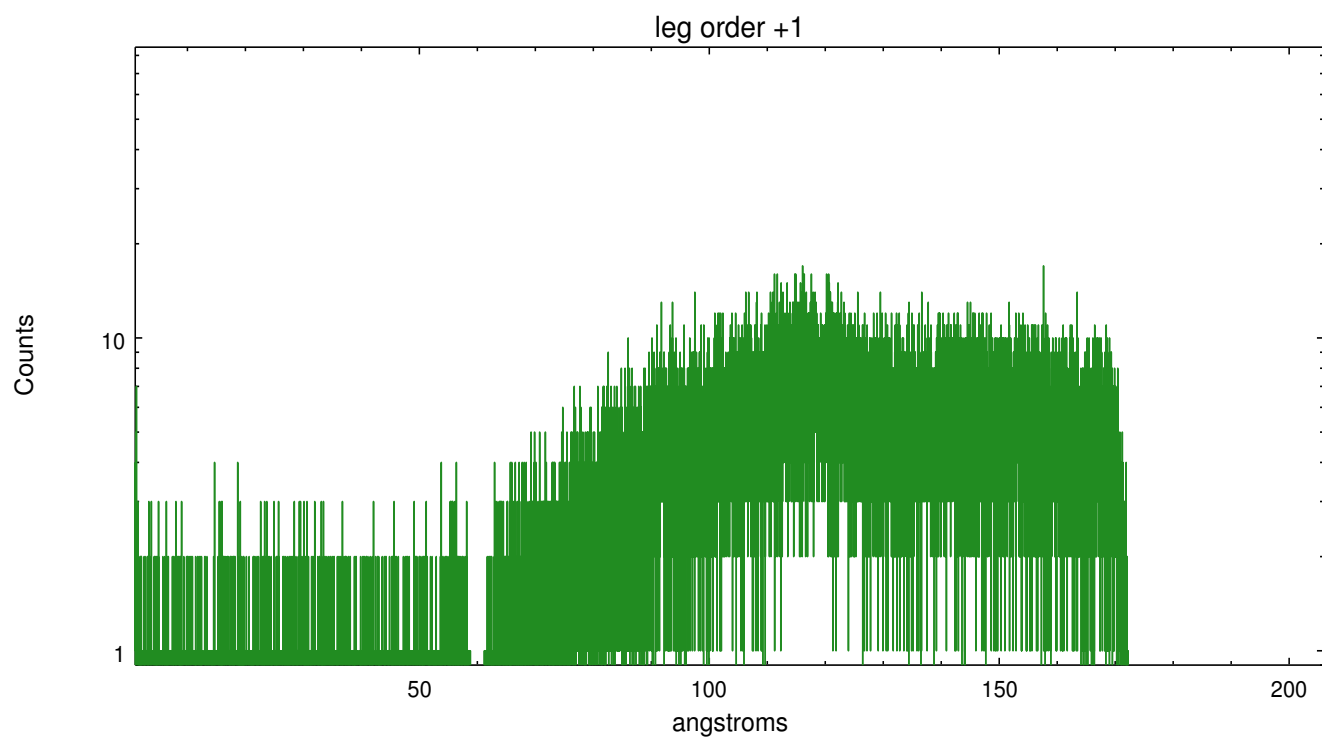
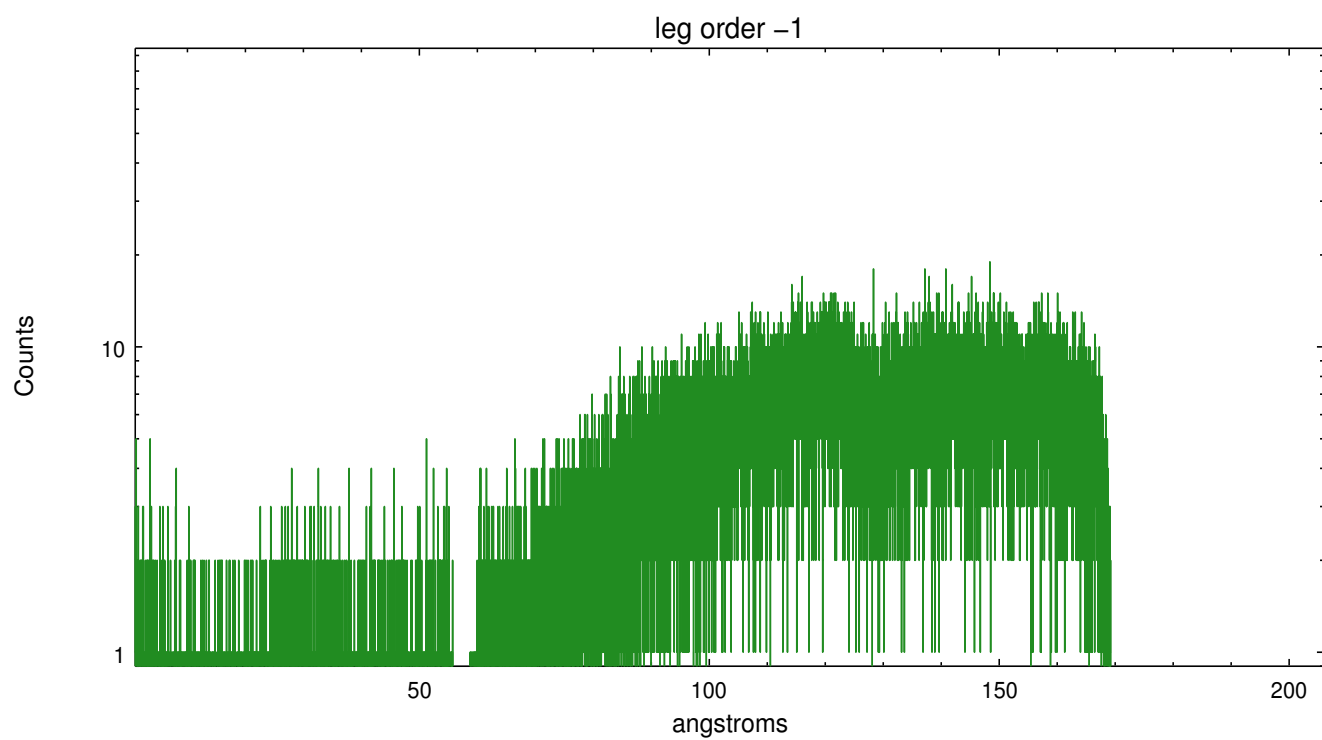


3 Gratings

3.1 LETG Arm



LETG Zero Order



A Summary

A.1 Status

V&V Scientist	Joy Nichols
V&V Date (YYYY-MM-DD)	2010.05.13
V&V Edition	1
V&V Disposition and Status	OK
V&V Charge Time	11.998

A.2 Comments

HRC-S LETG standard candle