

V&V Reference Report

L2 ASCDS Version : 8.1.1

Observation 1419 - L2 Version 5

Chandra X-Ray Center

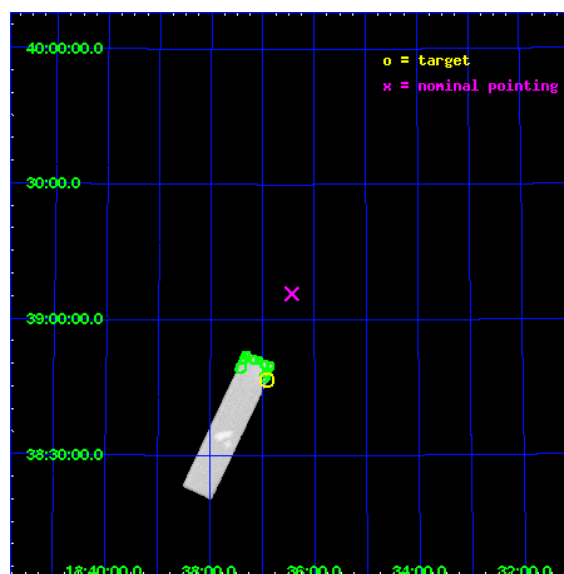
L2 Processing Date : Nov 20 2009

Contents

1	Front	2
2	OBI	3
2.1	OBI	3
2.1.1	Images	3
2.1.2	Parameters	4
2.1.3	Events	4
2.2	Compared Parameters	5
2.3	Aspect	6
2.4	Star Slots	9
2.4.1	Slot 3	9
2.4.2	Slot 4	10
2.4.3	Slot 5	11
2.4.4	Slot 6	12
2.4.5	Slot 7	13
2.5	FID Slots	14
2.5.1	Slot 0	14
2.5.2	Slot 1	15
2.5.3	Slot 2	16
3	Point Sources	17
A	Summary	18
A.1	Status	18
A.2	Comments	18

1 Front

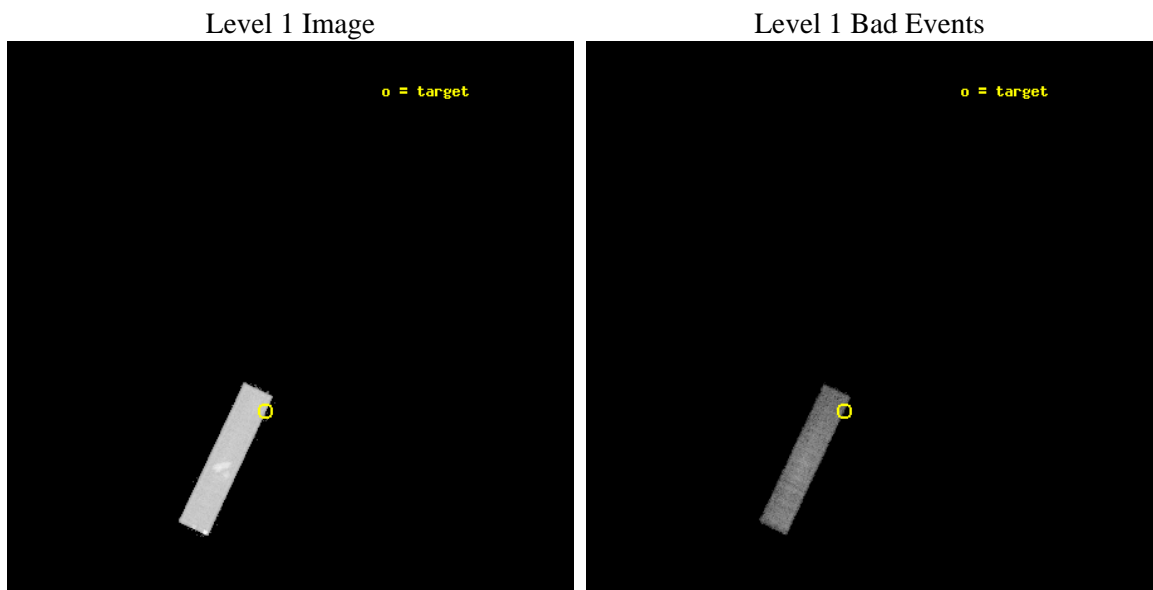
seq_num	280369	Sequence number
obs_id	1419	Observation id
title	TEST OF UV SENSITIVITY	Proposal title
observer	Dr. CXC Calibration	Principal investigator
object	VEGA	Source name
ra_targ	279.230833	Observer's specified target RA
dec_targ	38.7795	Observer's specified target Dec
ra_nom	279.10830166729	Nominal RA
dec_nom	39.097082915534	Nominal Dec
roll_nom	295.35743939202	Nominal Roll
revision	5	Processing version of data
ontime	3203.3813655674	[s]
livetime	3184.0020023245	Ontime multiplied by DTCOR
l2events	113001	Number of level 2 events



2 OBI

2.1 OBI

2.1.1 Images



2.1.2 Parameters

obi_num	0	Obi number	sched_exp_time	3000.000000	Scheduled observation exposure time
ascdsver	8.1.1	Processing system revision	ontime	3203.3813655674	[s]
caldbver	4.1.4	 	l1events	176605	Number of level 1 events
date	2009-11-20T19:17:24	Date and time of file creation			
revision	4	Processing version of data			

2.1.3 Events

Level 1 Events

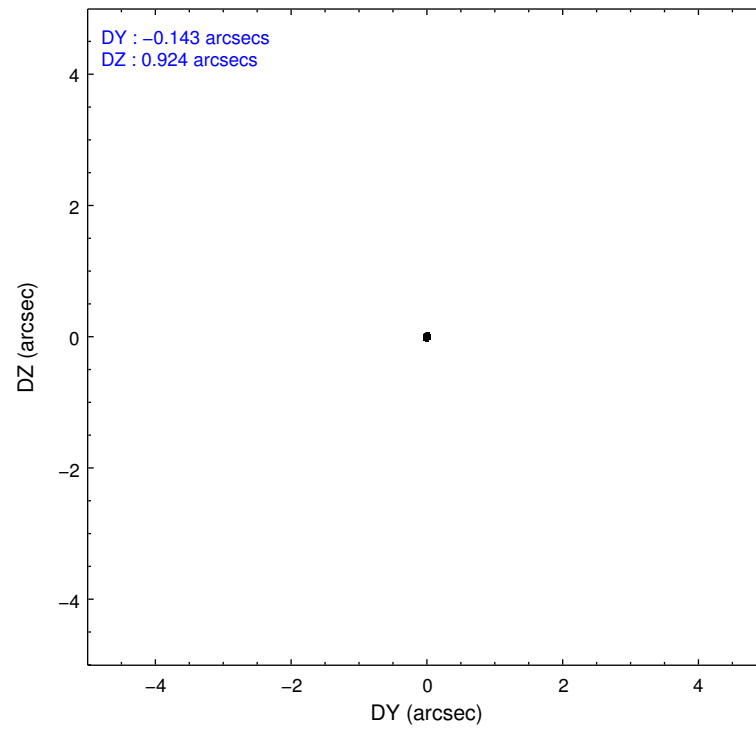
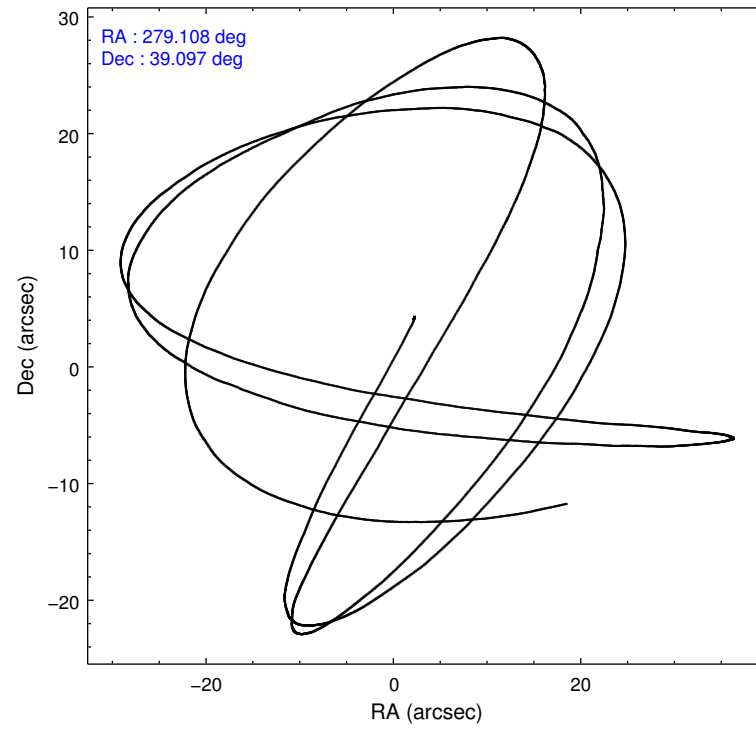
	segment 1	segment 2	segment 3
level 1 events	0	77	176528
rejected events	0	53	49241
rejected %	0%	68%	27%

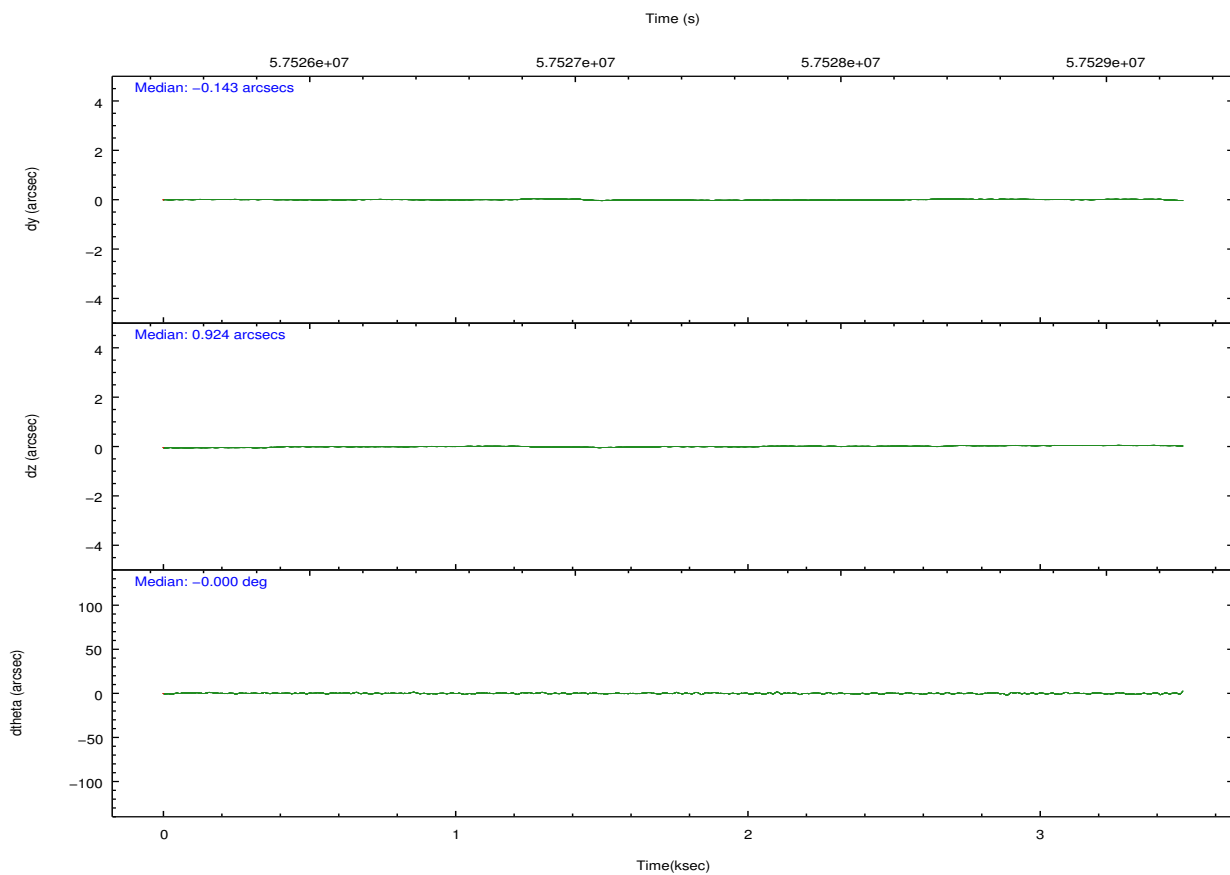
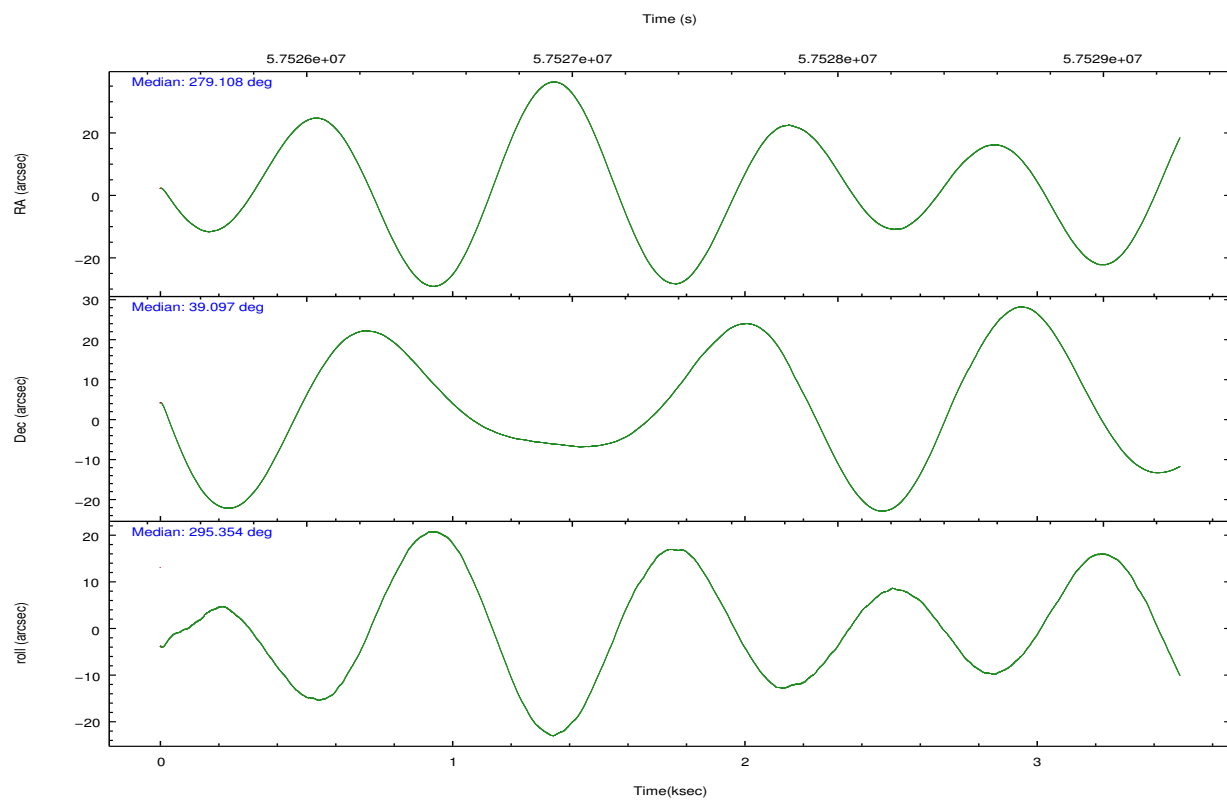
2.2 Compared Parameters

Parameter	Planned	Actual
Instrument	HRC	HRC
Detector	HRC-S	HRC-S
Grating	NONE	NONE
Data mode	OBSERVING	OBSERVING
Observation mode	POINTING	POINTING
Pointing RA	279.077248	279.1083016672941
Pointing Dec	39.113092	39.09708291553383
Pointing Roll	295.309692	295.3574393920179
SIM focus pos (mm)	-1.536095	-1.608774427437079
SIM defocus (mm)	-0.002758228956671258	-0.07543778803278212
SIM translation stage pos (mm)	250.455976	250.466033080201
SIM translation stage offset (mm)	0	-0.01005468664627074
Observation start time	57526113.184000	57525446.472306
Observation start date	1999-10-28T19:27:29	1999-10-28T19:17:26
Observation end time	57529113.184000	57529998.497471
Observation end date	1999-10-28T20:17:29	1999-10-28T20:33:18

Parameter	Planned	Actual
Obspar format version number	6	6
Obspar file type	PREDICTED	ACTUAL
Obspar update status	NONE	UPDATED

2.3 Aspect



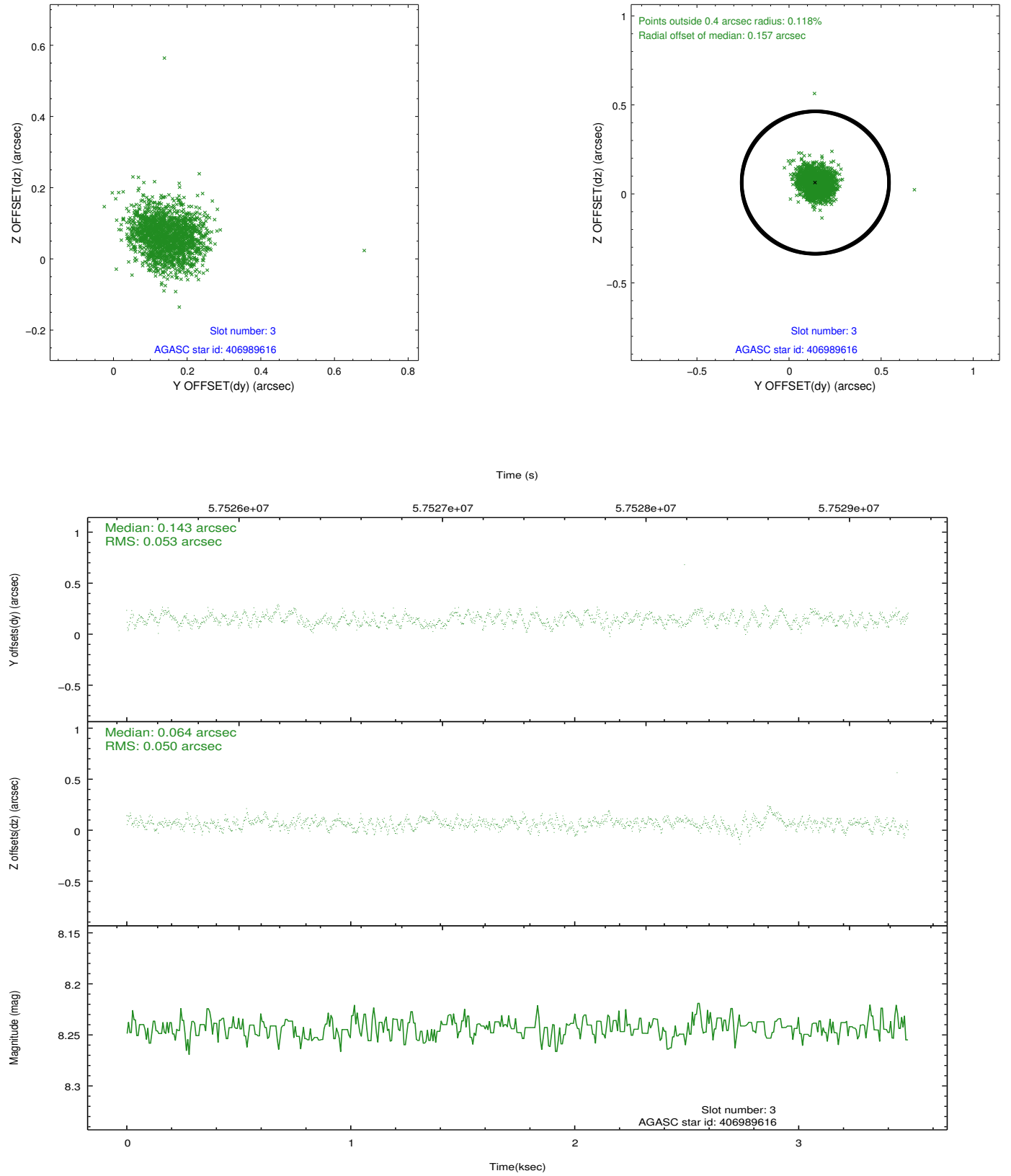


Slot Statistics

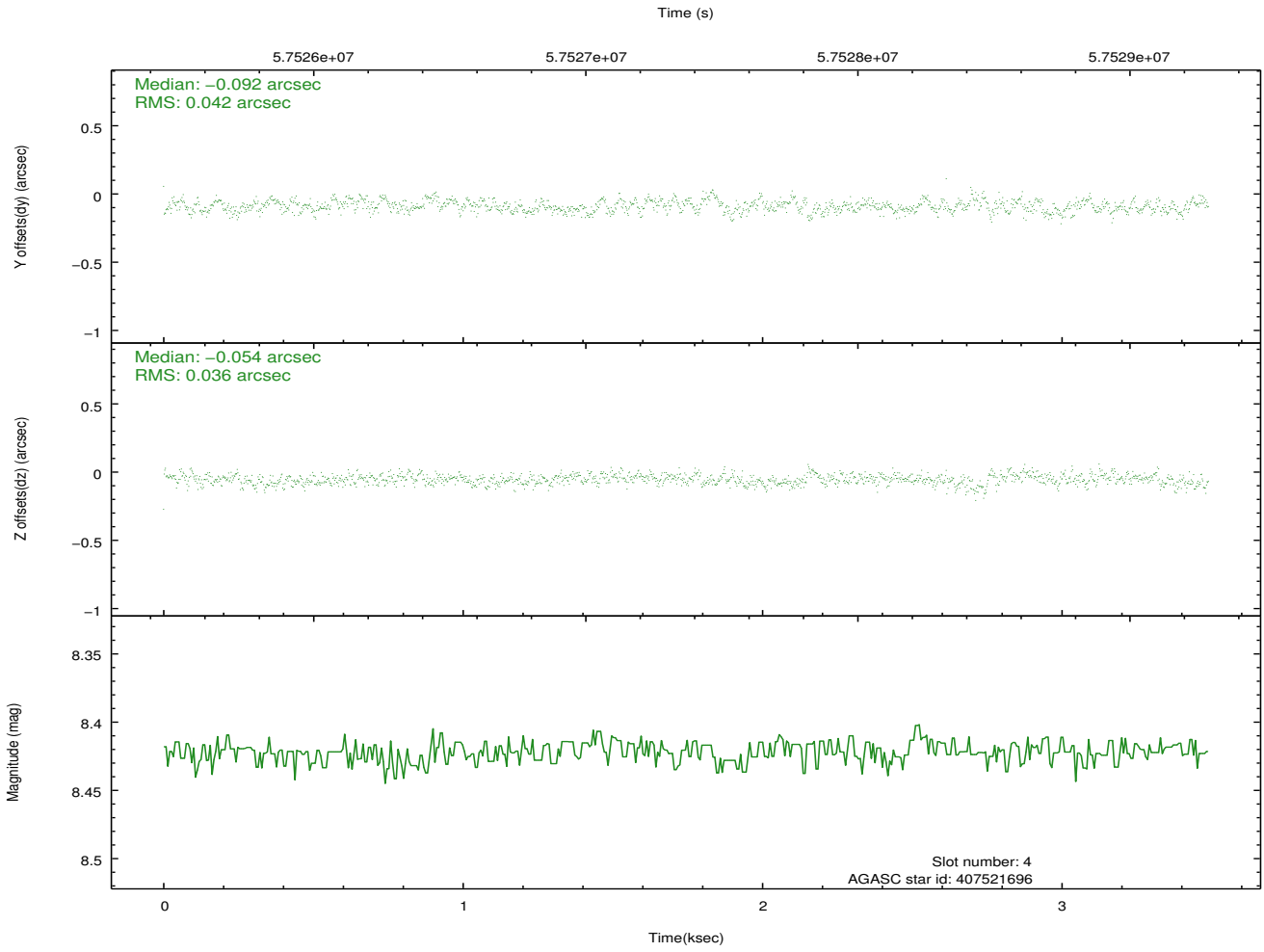
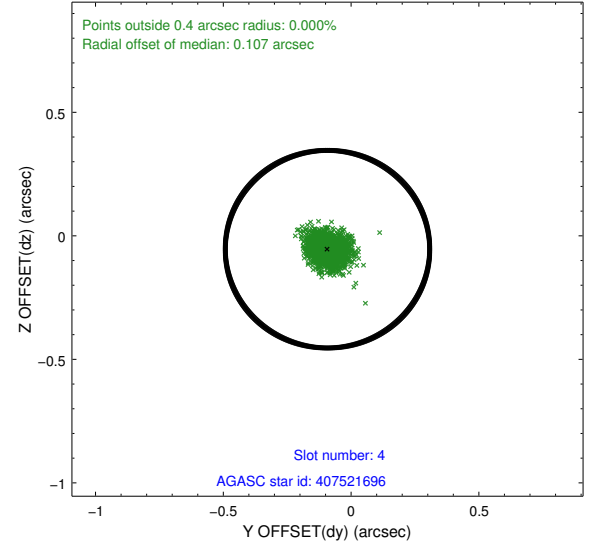
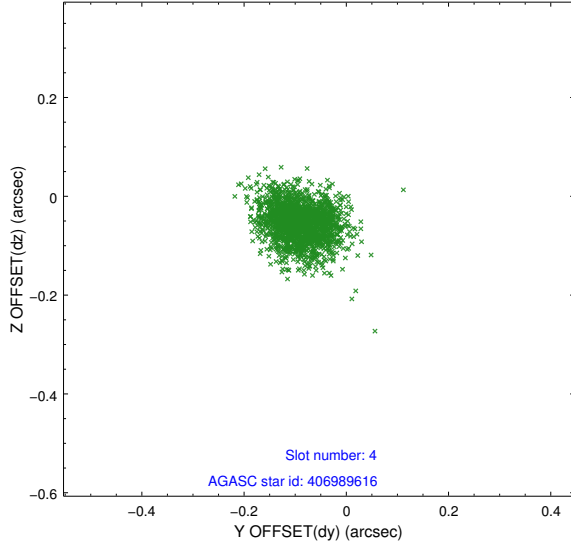
slot	status	id	mag	n_pts	med_dy	med_dz	dr1	dr2	ra	dec	mean_y	mean_z
0	FID	HRC-S-1	6.98	1703	0.136	-0.119	0.006	0.010	0.000000	0.000000	-1153.84	-449.21
1	FID	HRC-S-2	6.96	1703	0.116	-0.097	0.004	0.008	0.000000	0.000000	1245.10	-442.22
2	FID	HRC-S-3	7.00	1703	0.138	-0.085	0.006	0.010	0.000000	0.000000	-1155.77	580.08
3	GUIDE	406989616	8.24	1702	0.143	0.064	0.075	0.118	279.202881	38.520843	2078.52	-589.55
4	GUIDE	407521696	8.42	1703	-0.092	-0.054	0.058	0.096	278.371808	39.571392	-2334.29	-1059.91
5	GUIDE	407521232	8.65	1702	-0.008	0.046	0.068	0.114	279.628883	39.431715	-387.10	1880.17
6	GUIDE	406981456	9.56	1700	-0.167	-0.133	0.099	0.159	278.047891	39.304475	-1863.89	-2288.08
7	GUIDE	408696904	9.97	1701	0.120	0.074	0.120	0.195	280.049074	38.878750	1912.60	2108.32

2.4 Star Slots

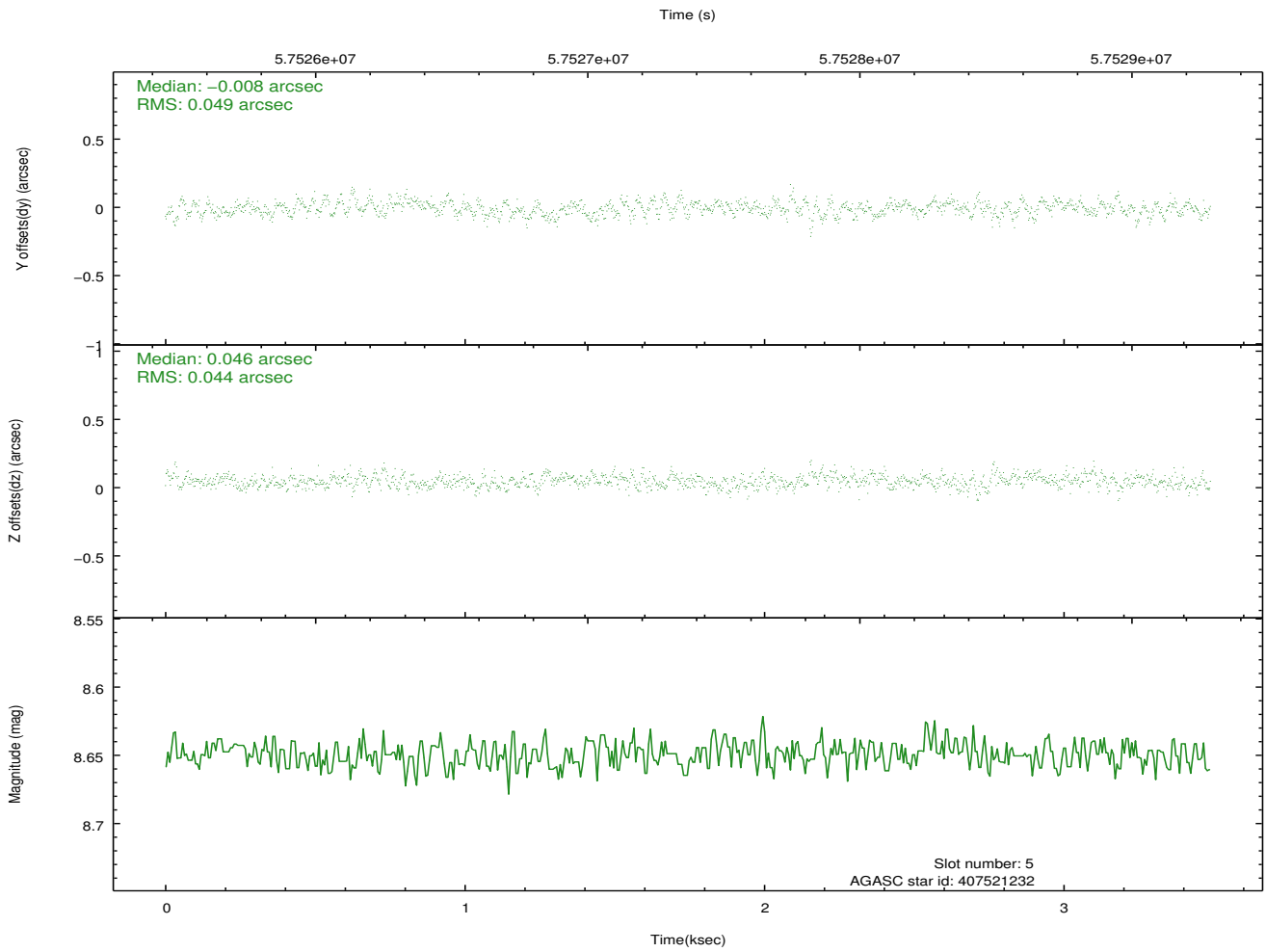
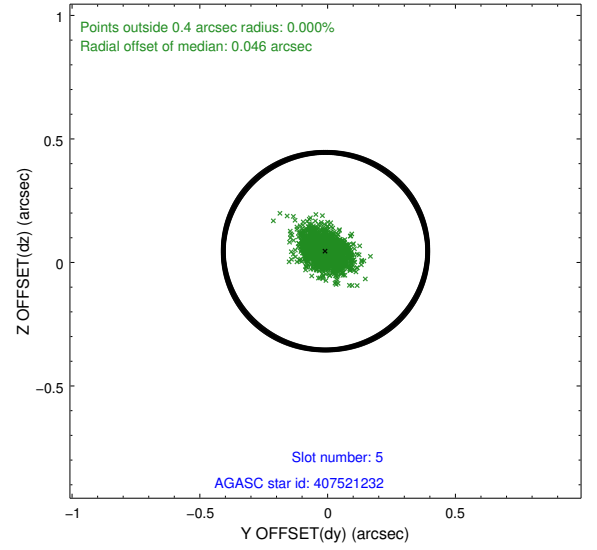
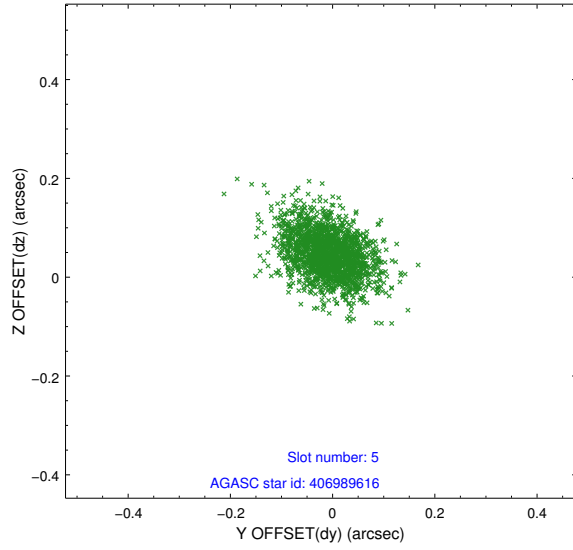
2.4.1 Slot 3



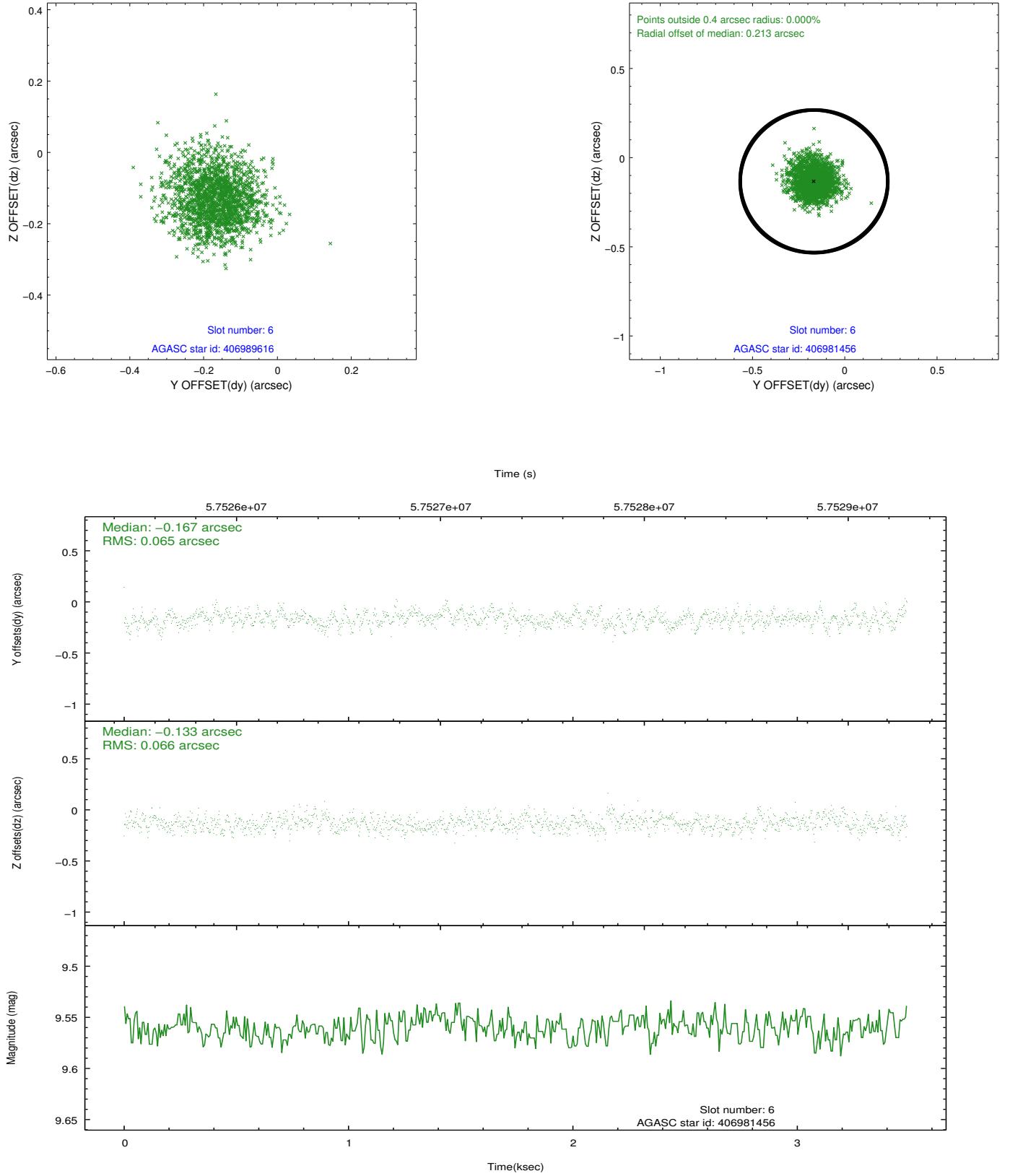
2.4.2 Slot 4



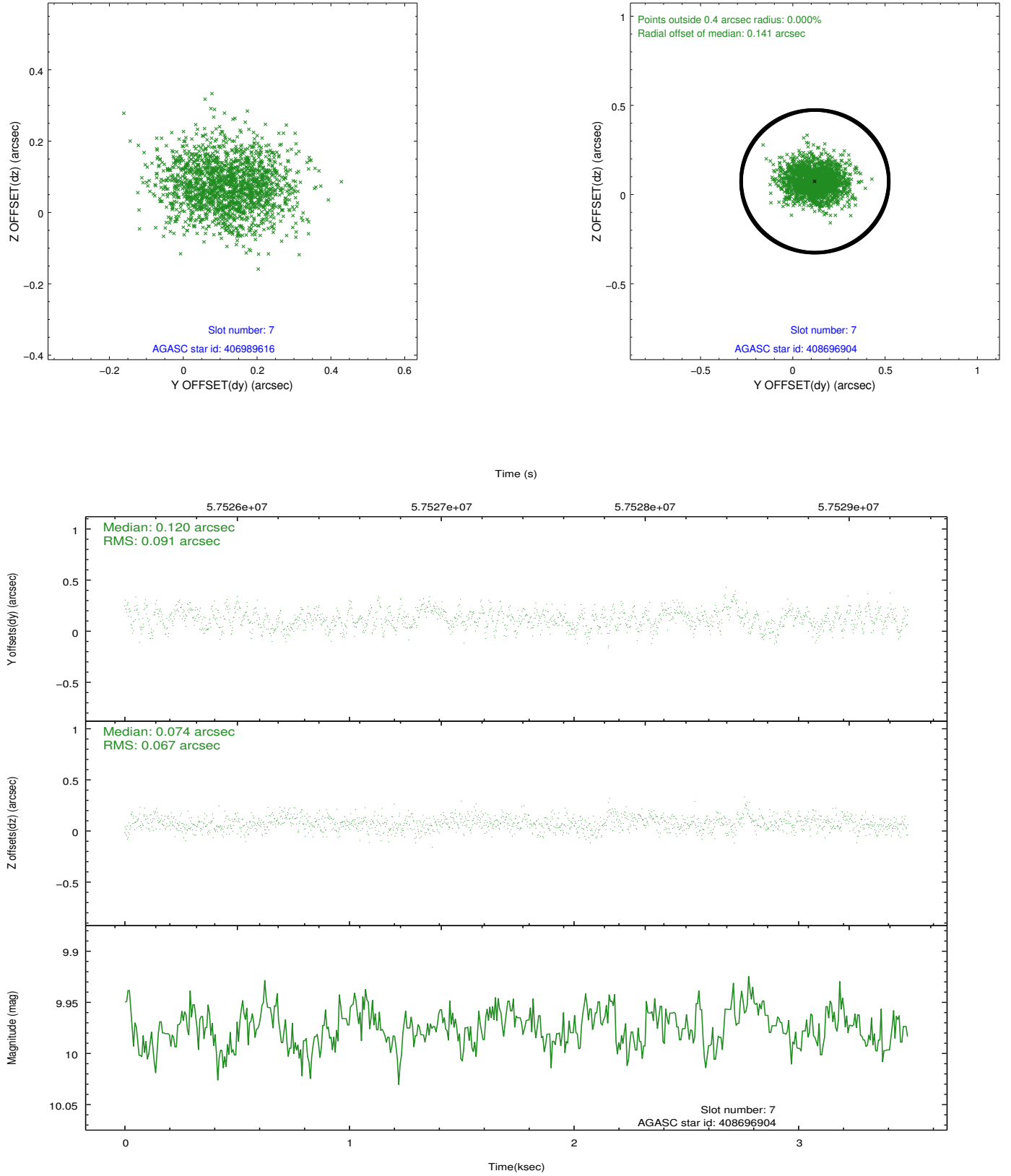
2.4.3 Slot 5



2.4.4 Slot 6

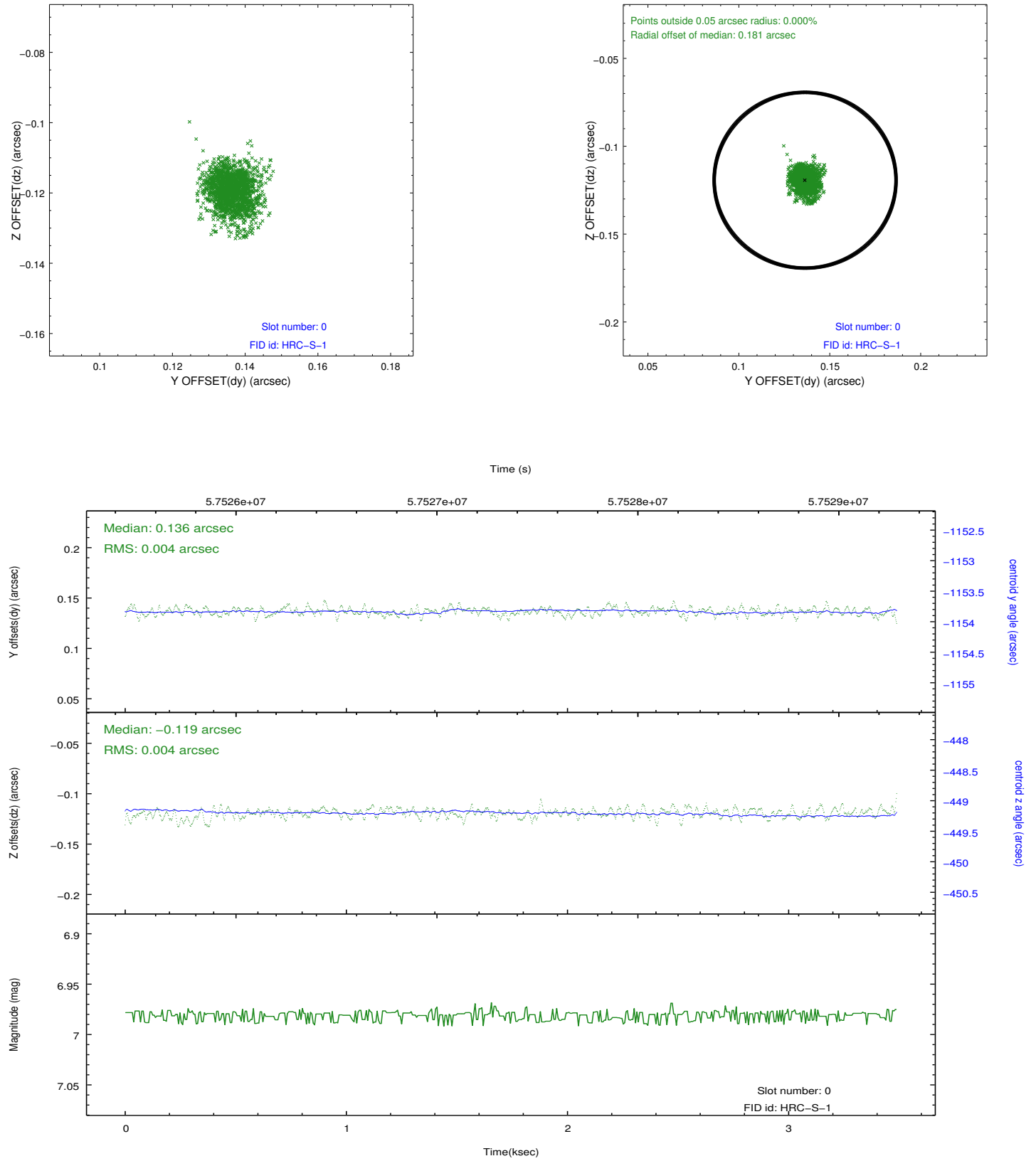


2.4.5 Slot 7

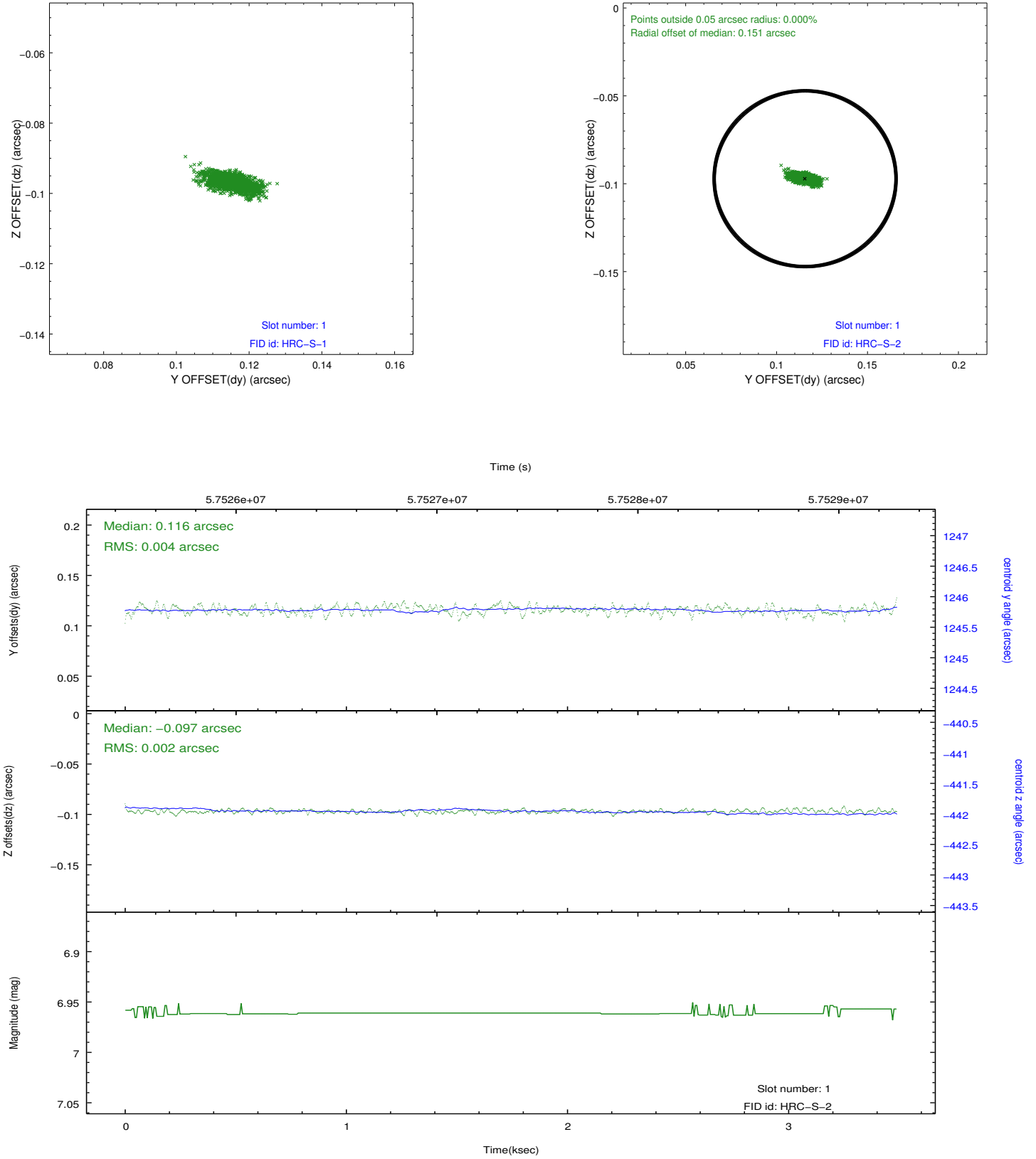


2.5 FID Slots

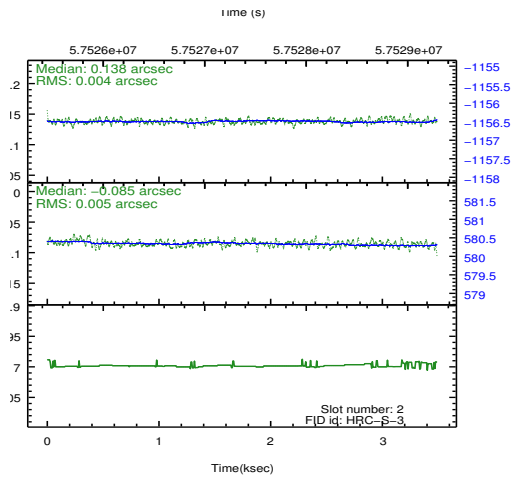
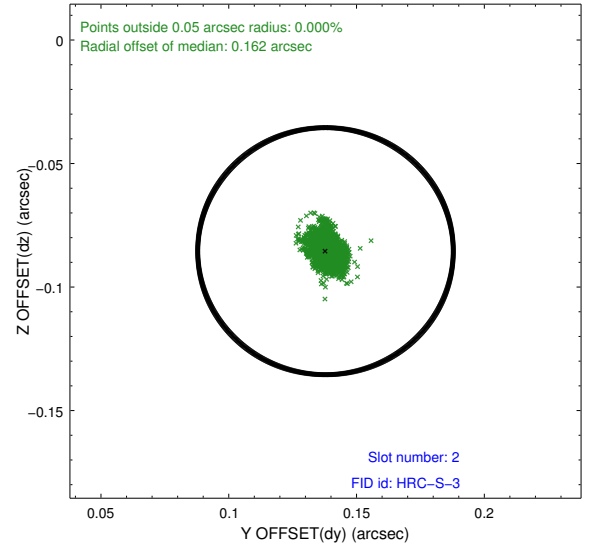
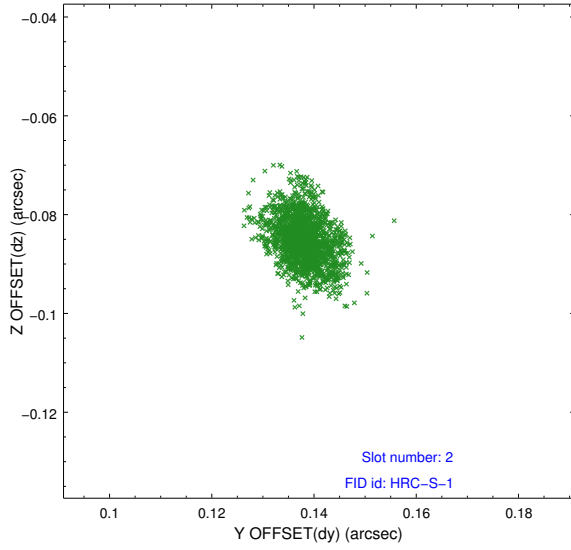
2.5.1 Slot 0



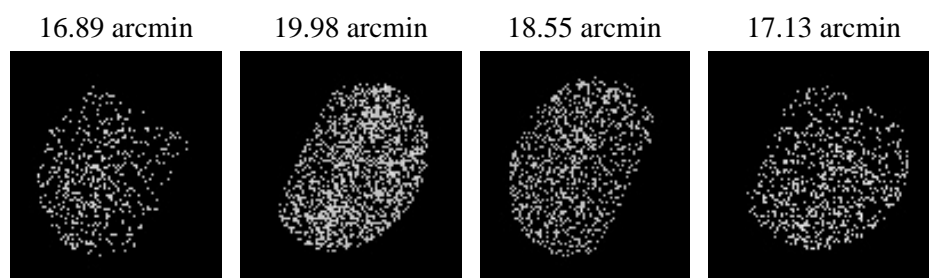
2.5.2 Slot 1



2.5.3 Slot 2



3 Point Sources



A Summary

A.1 Status

V&V Scientist	Joy Nichols
V&V Date (YYYY-MM-DD)	2009.12.01
V&V Edition	1
V&V Disposition and Status	OK
V&V Charge Time	2.275

A.2 Comments

Charge time for this ObsId remains at original value of 2.275 ks,
although
with the current processing the charge time would have been 3.203 ksec.