

V&V Reference Report

L2 ASCDS Version : 8.1.1

Observation 1418 - L2 Version 5

Chandra X-Ray Center

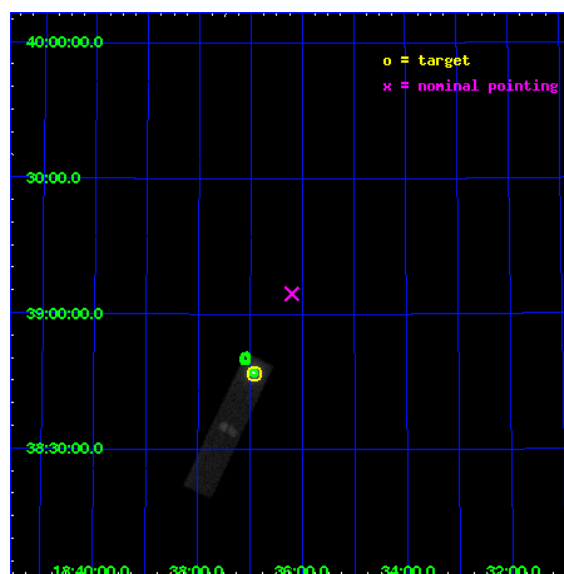
L2 Processing Date : Nov 20 2009

Contents

1	Front	2
2	OBI	3
2.1	OBI	3
2.1.1	Images	3
2.1.2	Parameters	4
2.1.3	Events	4
2.2	Compared Parameters	5
2.3	Aspect	6
2.4	Star Slots	9
2.4.1	Slot 3	9
2.4.2	Slot 4	10
2.4.3	Slot 6	11
2.4.4	Slot 7	12
2.5	FID Slots	13
2.5.1	Slot 0	13
2.5.2	Slot 1	14
2.5.3	Slot 2	15
3	Point Sources	16
A	Summary	17
A.1	Status	17
A.2	Comments	17

1 Front

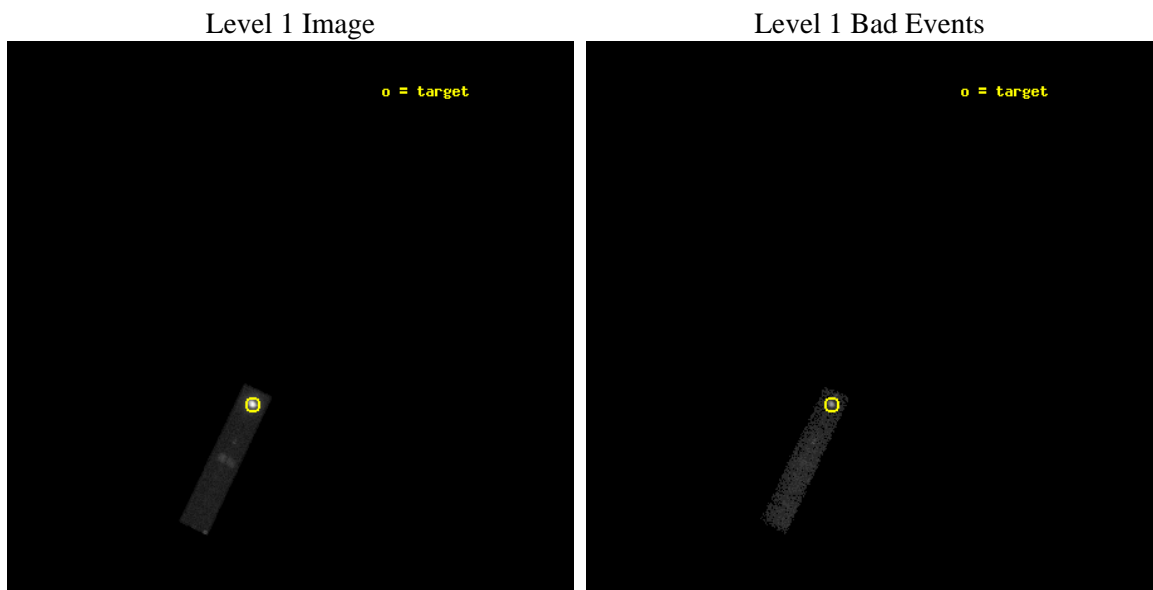
seq_num	280368	Sequence number
obs_id	1418	Observation id
title	TEST OF UV SENSITIVITY	Proposal title
observer	Dr. CXC Calibration	Principal investigator
object	VEGA	Source name
ra_targ	279.230833	Observer's specified target RA
dec_targ	38.7795	Observer's specified target Dec
ra_nom	279.05032329342	Nominal RA
dec_nom	39.075817830486	Nominal Dec
roll_nom	295.35432230714	Nominal Roll
revision	5	Processing version of data
ontime	3204.4063656032	[s]
livetime	1044.7963990589	Ontime multiplied by DTCOR
l2events	567276	Number of level 2 events



2 OBI

2.1 OBI

2.1.1 Images



2.1.2 Parameters

obi_num	0	Obi number	sched_exp_time	3000.000000	Scheduled observation exposure time
ascdsver	8.1.1	Processing system revision	ontime	3204.4063656032	[s]
caldbver	4.1.4	 	l1events	599199	Number of level 1 events
date	2009-11-20T20:01:26	Date and time of file creation			
revision	5	Processing version of data			

2.1.3 Events

Level 1 Events

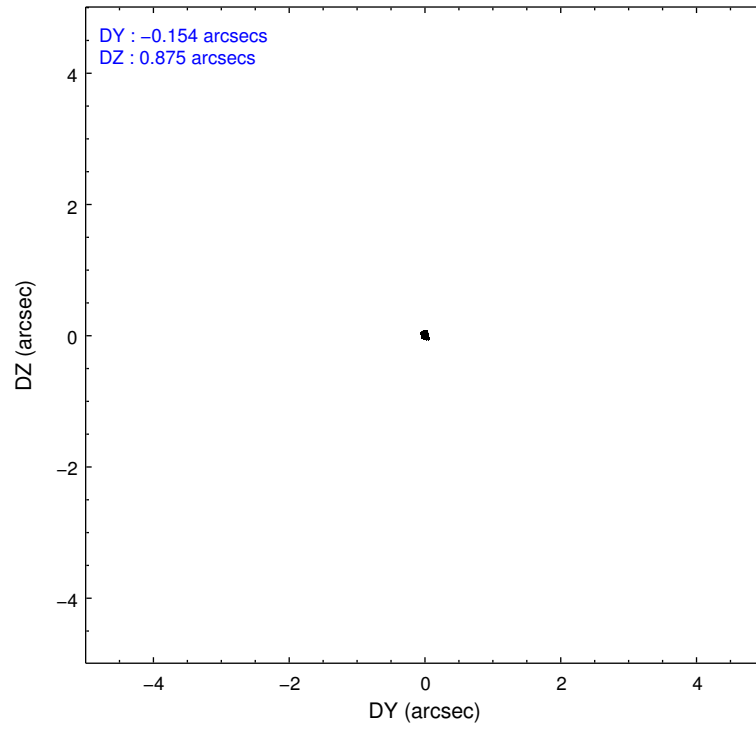
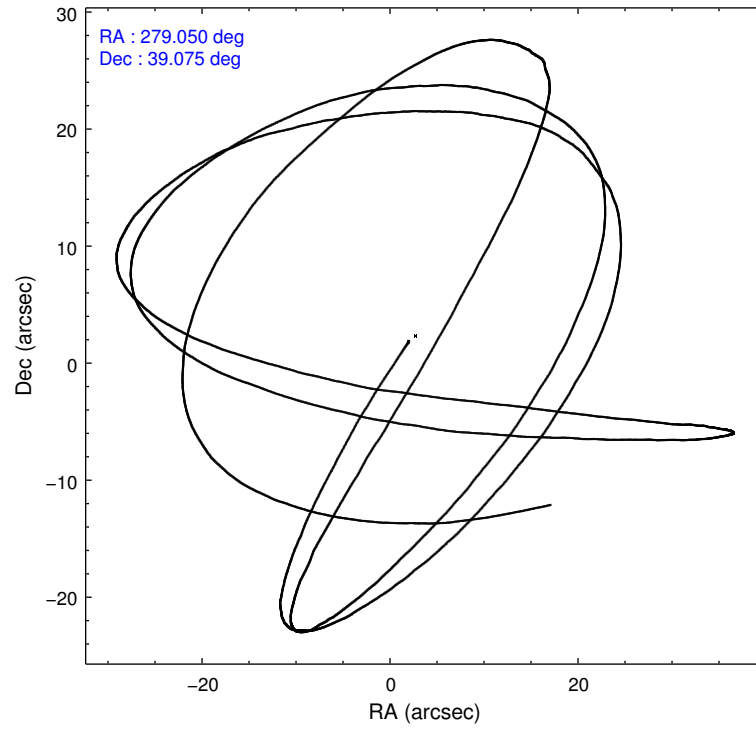
	segment 1	segment 2	segment 3
level 1 events	0	33	599166
rejected events	0	20	24185
rejected %	0%	60%	4%

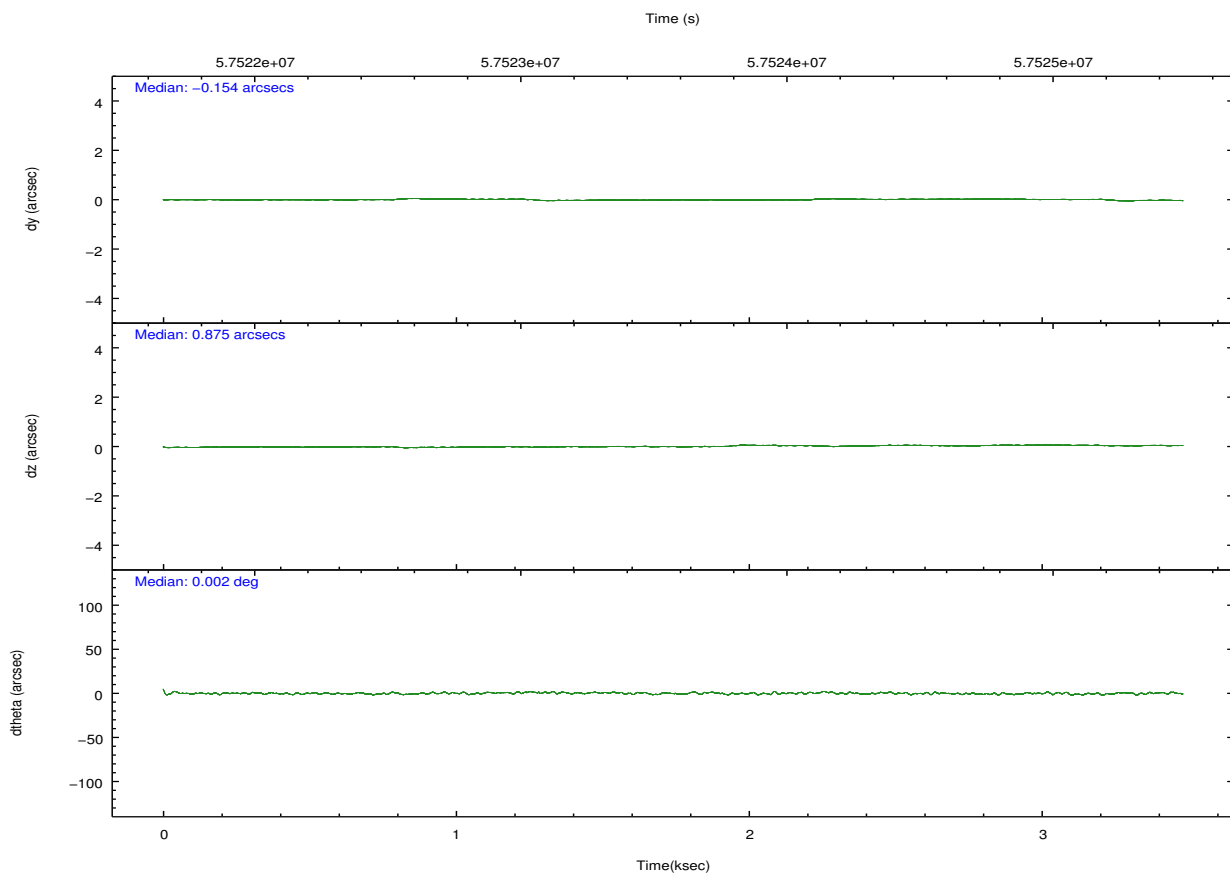
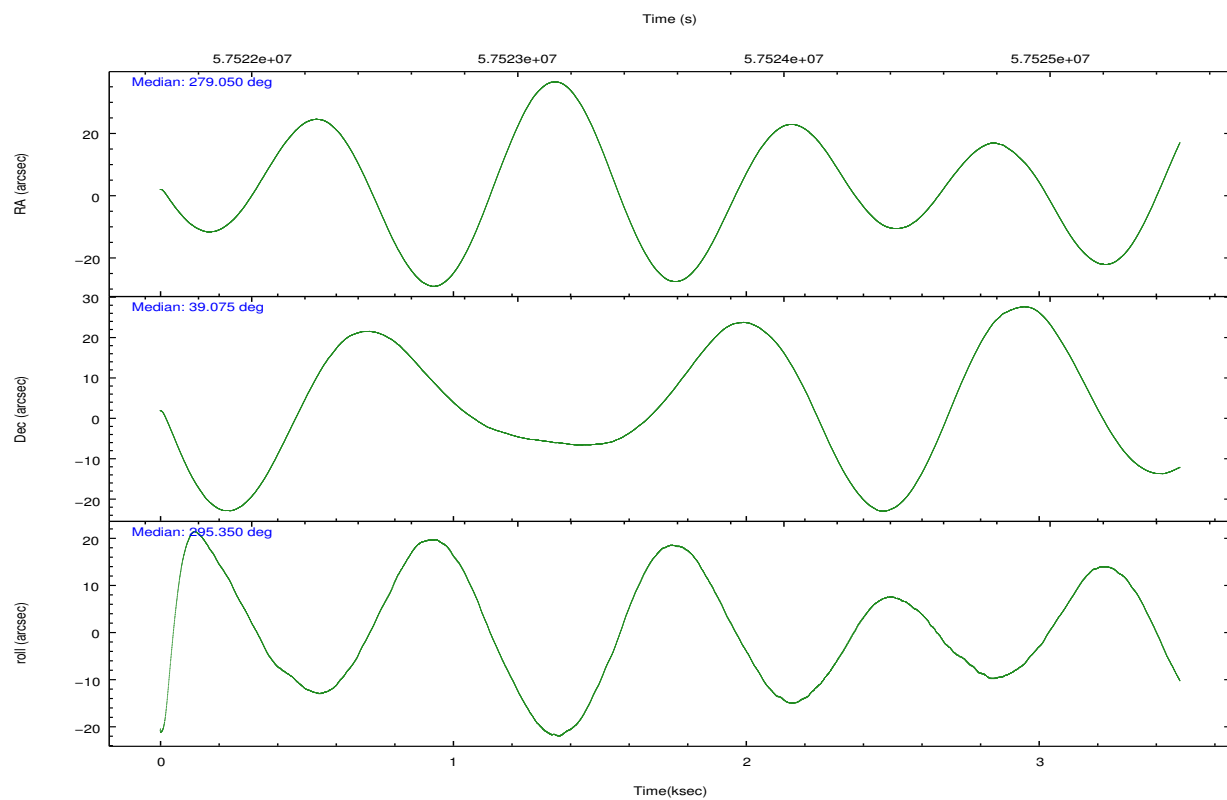
2.2 Compared Parameters

Parameter	Planned	Actual
Instrument	HRC	HRC
Detector	HRC-S	HRC-S
Grating	NONE	NONE
Data mode	OBSERVING	OBSERVING
Observation mode	POINTING	POINTING
Pointing RA	279.019290	279.0503232934223
Pointing Dec	39.091806	39.07581783048551
Pointing Roll	295.306565	295.3543223071425
SIM focus pos (mm)	-1.536095	-1.608774427437079
SIM defocus (mm)	-0.002758228956671258	-0.07543778803278212
SIM translation stage pos (mm)	250.455976	250.466033080201
SIM translation stage offset (mm)	0	-0.01005468664627074
Observation start time	57522313.184000	57521646.797169
Observation start date	1999-10-28T18:24:09	1999-10-28T18:14:06
Observation end time	57525313.184000	57525446.472306
Observation end date	1999-10-28T19:14:09	1999-10-28T19:17:26

Parameter	Planned	Actual
Obspar format version number	6	6
Obspar file type	PREDICTED	ACTUAL
Obspar update status	NONE	UPDATED

2.3 Aspect



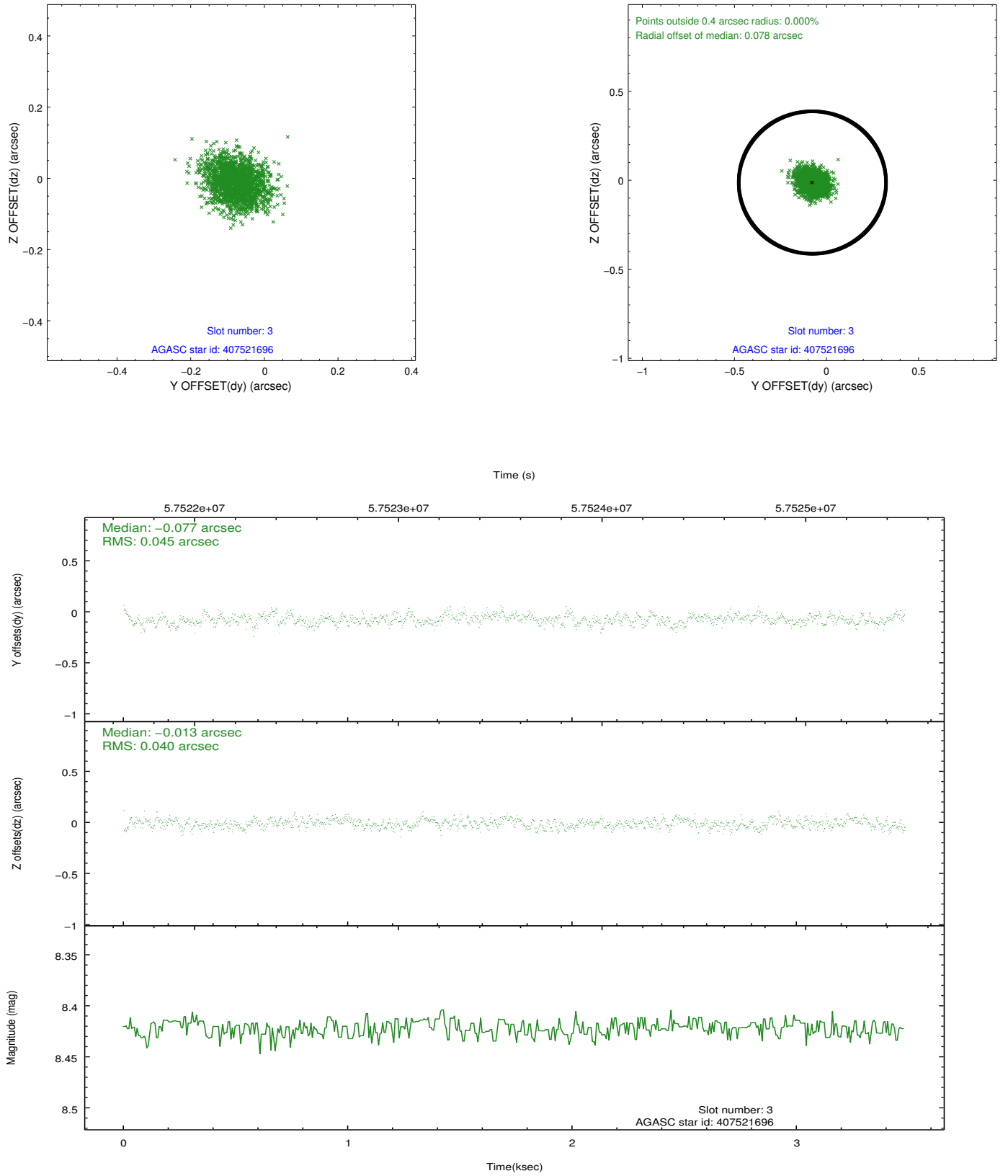


Slot Statistics

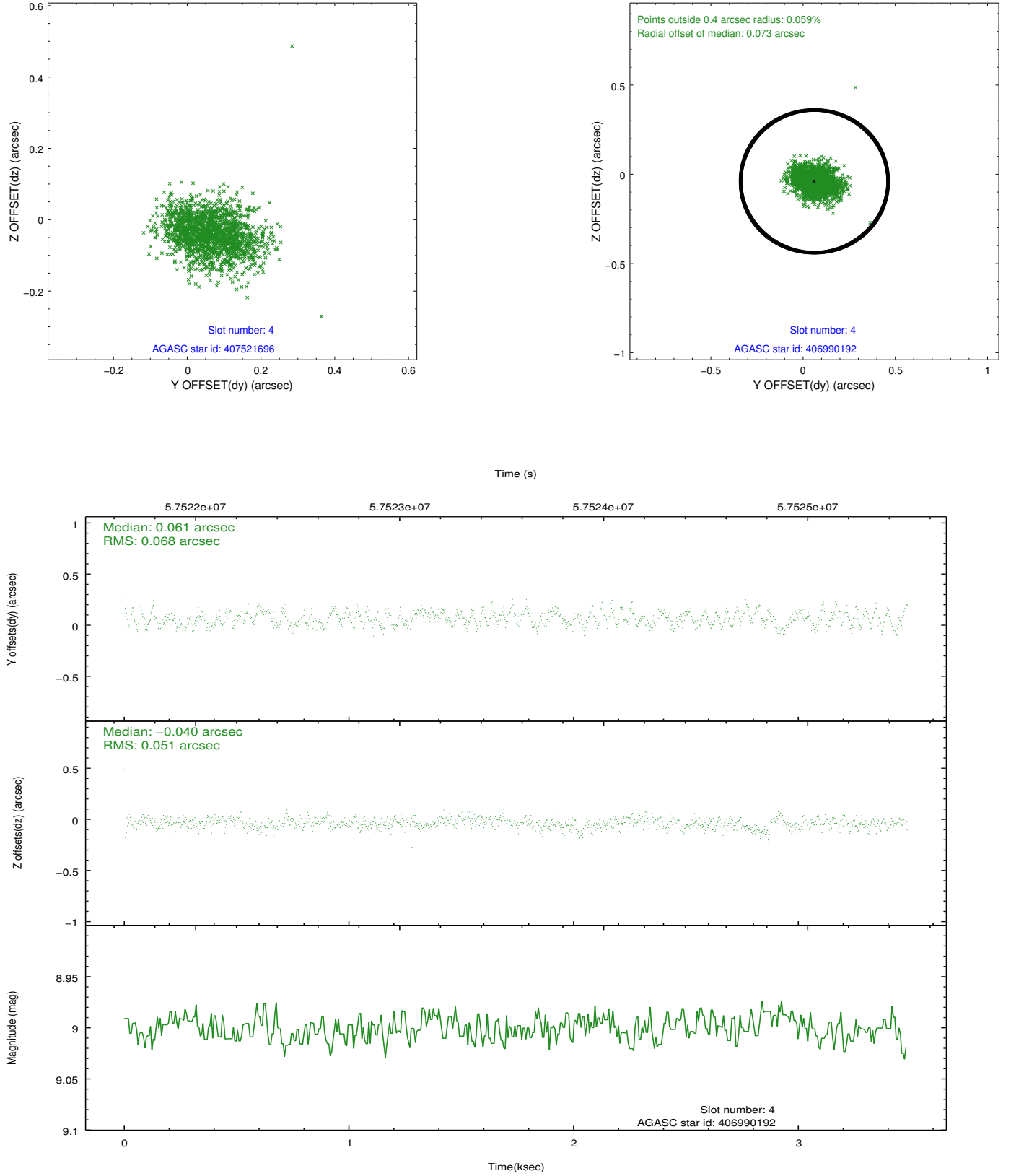
slot	status	id	mag	n_pts	med_dy	med_dz	dr1	dr2	ra	dec	mean_y	mean_z
0	FID	HRC-S-1	6.99	1700	0.148	-0.115	0.006	0.010	0.000000	0.000000	-1153.84	-449.11
1	FID	HRC-S-3	7.00	1700	0.104	-0.074	0.007	0.012	0.000000	0.000000	-1157.18	580.18
2	FID	HRC-S-4	6.96	1700	0.135	-0.108	0.005	0.009	0.000000	0.000000	1243.79	583.07
3	GUIDE	407521696	8.42	1700	-0.077	-0.013	0.064	0.103	278.371808	39.571392	-2334.75	-881.96
4	GUIDE	406990192	9.00	1698	0.061	-0.040	0.090	0.146	278.510952	38.533654	1199.85	-2150.00
5	OMITTED		0.00	0	0.000	0.000	0.000	0.000	0.000000	0.000000	0.00	0.00
6	GUIDE	406981456	9.56	1700	-0.118	-0.105	0.098	0.153	278.047891	39.304475	-1861.28	-2112.51
7	GUIDE	408696904	9.98	1692	0.131	0.154	0.123	0.198	280.049074	38.878750	1911.17	2289.12

2.4 Star Slots

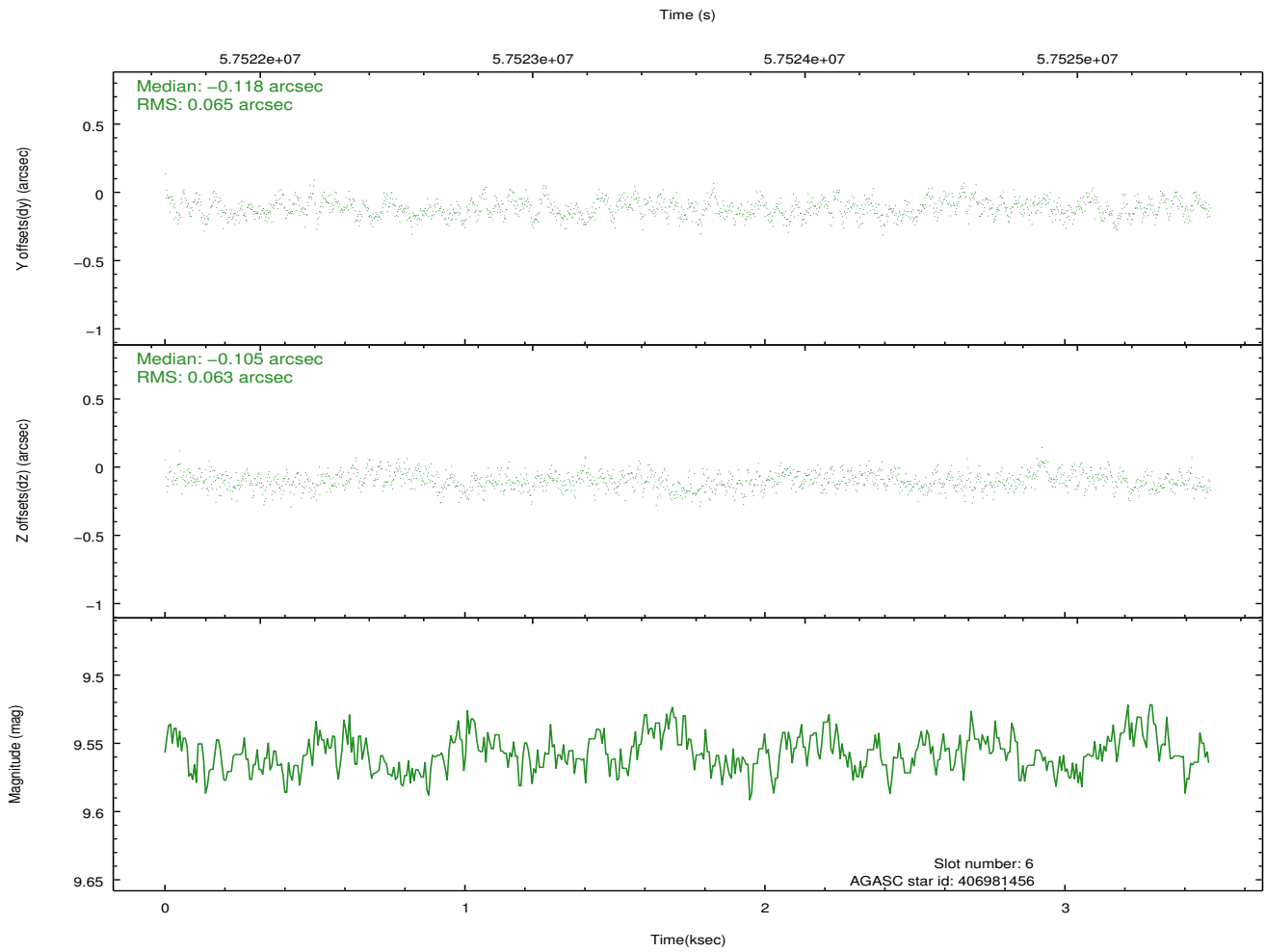
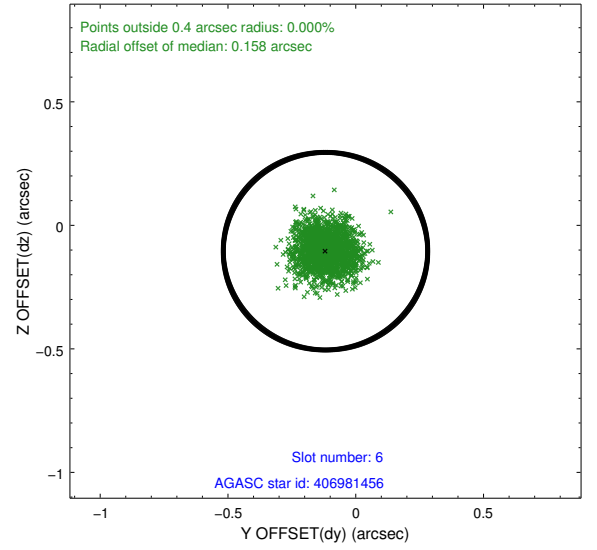
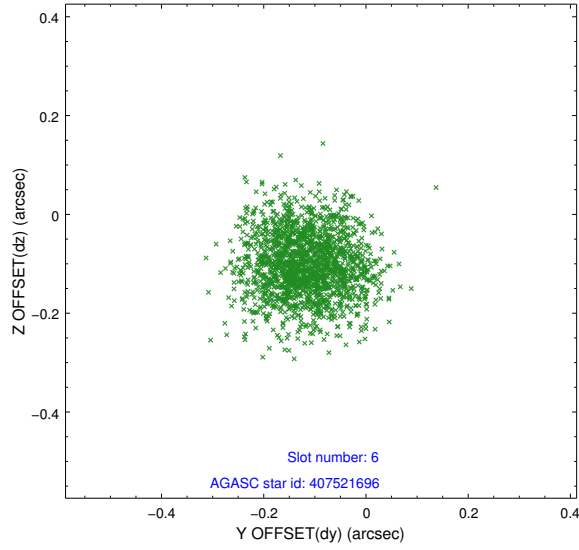
2.4.1 Slot 3



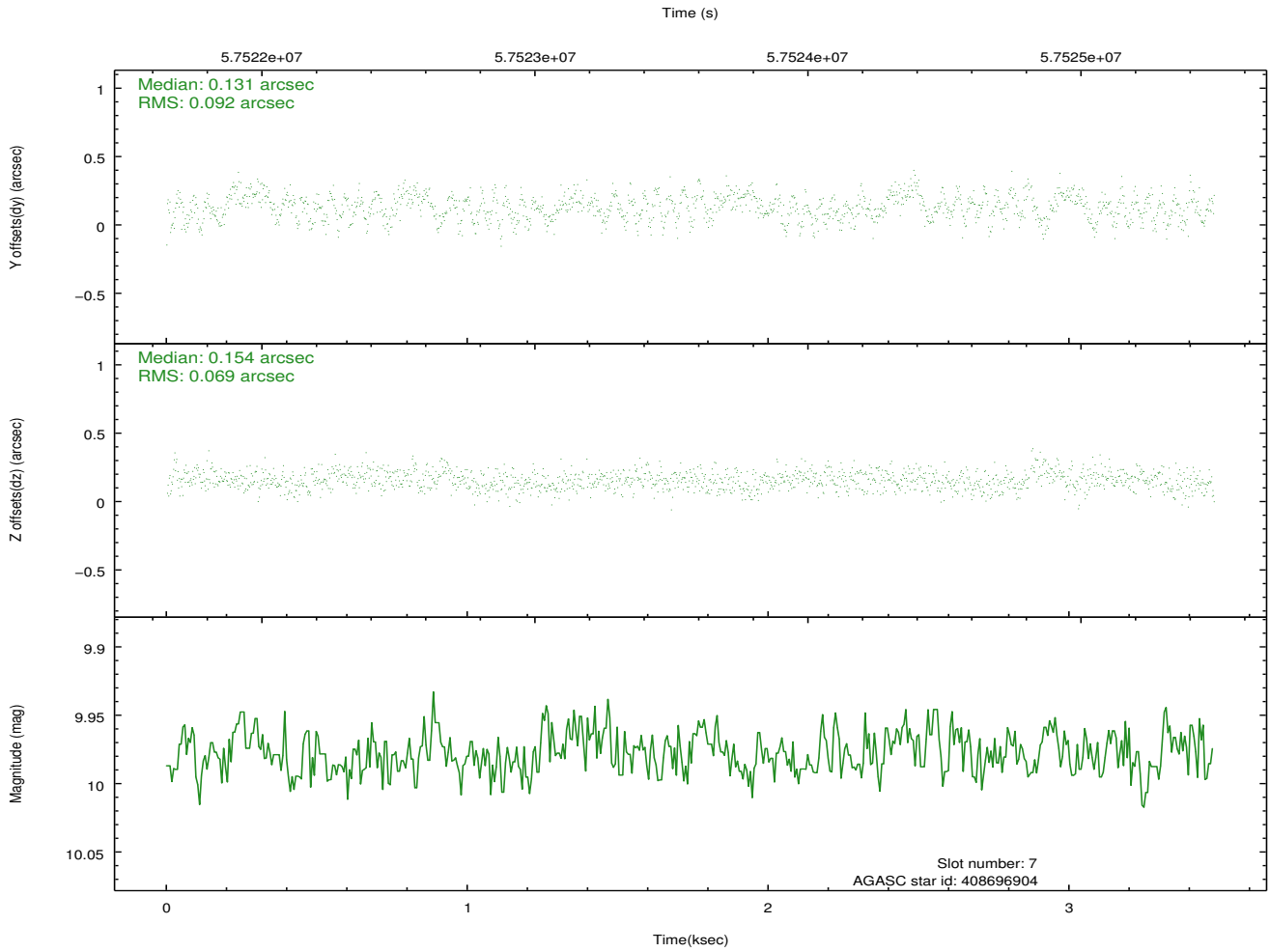
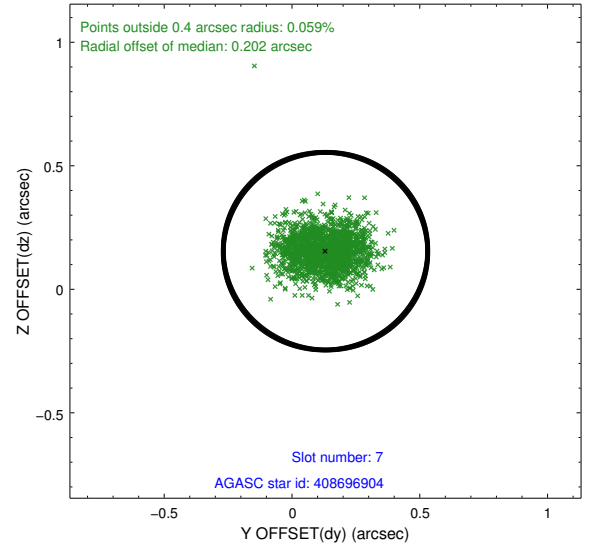
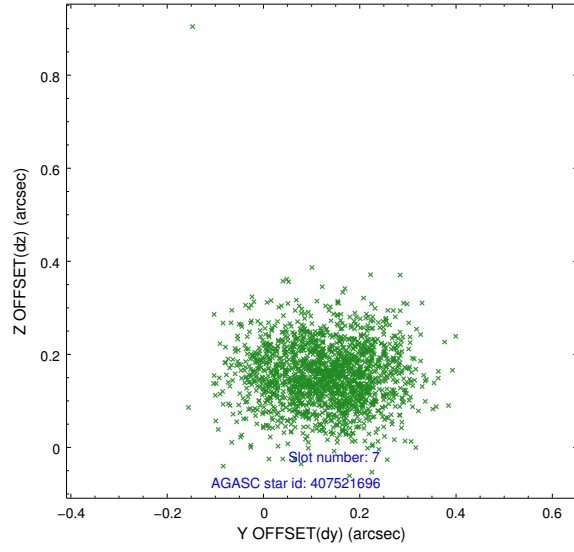
2.4.2 Slot 4



2.4.3 Slot 6

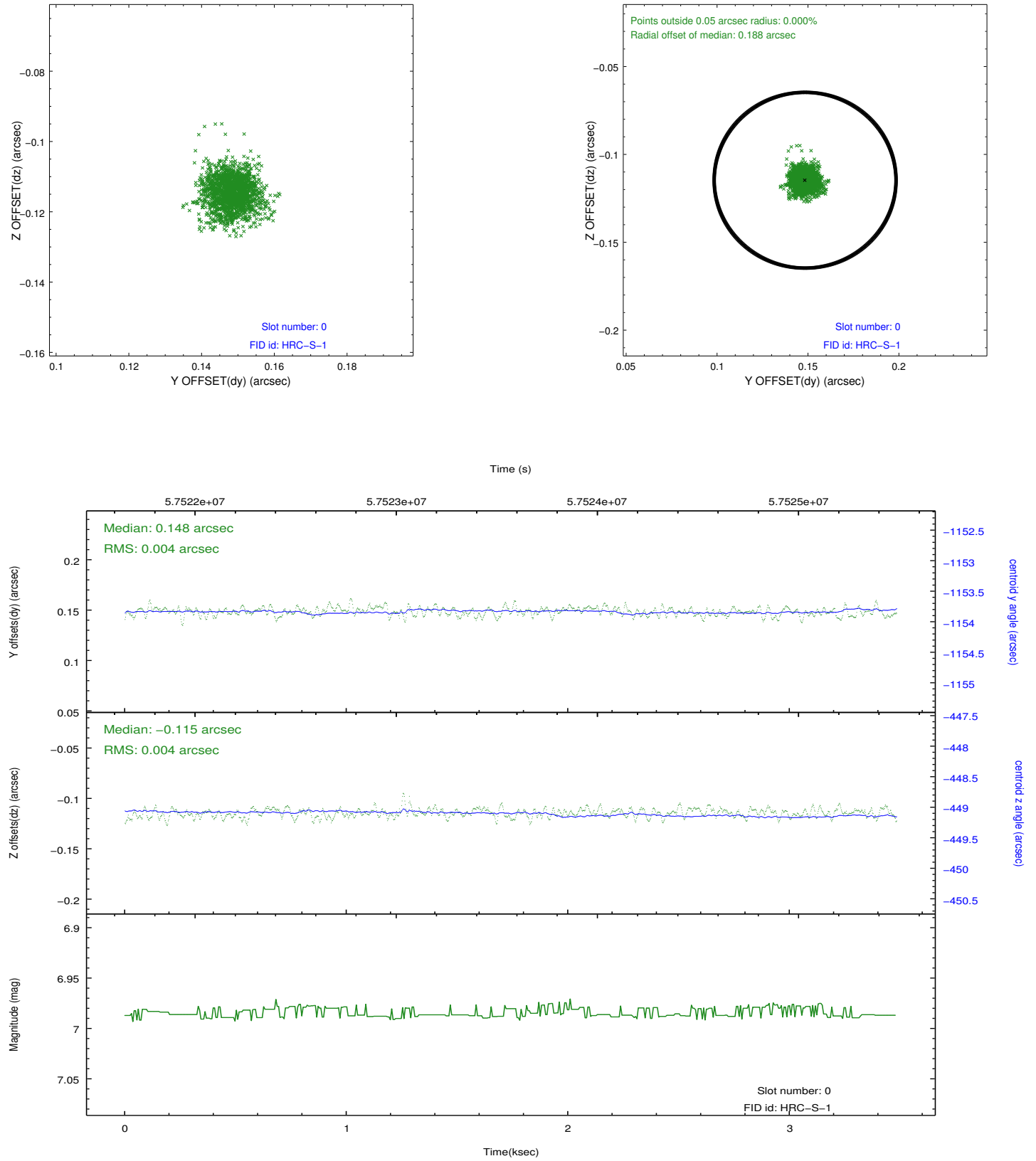


2.4.4 Slot 7

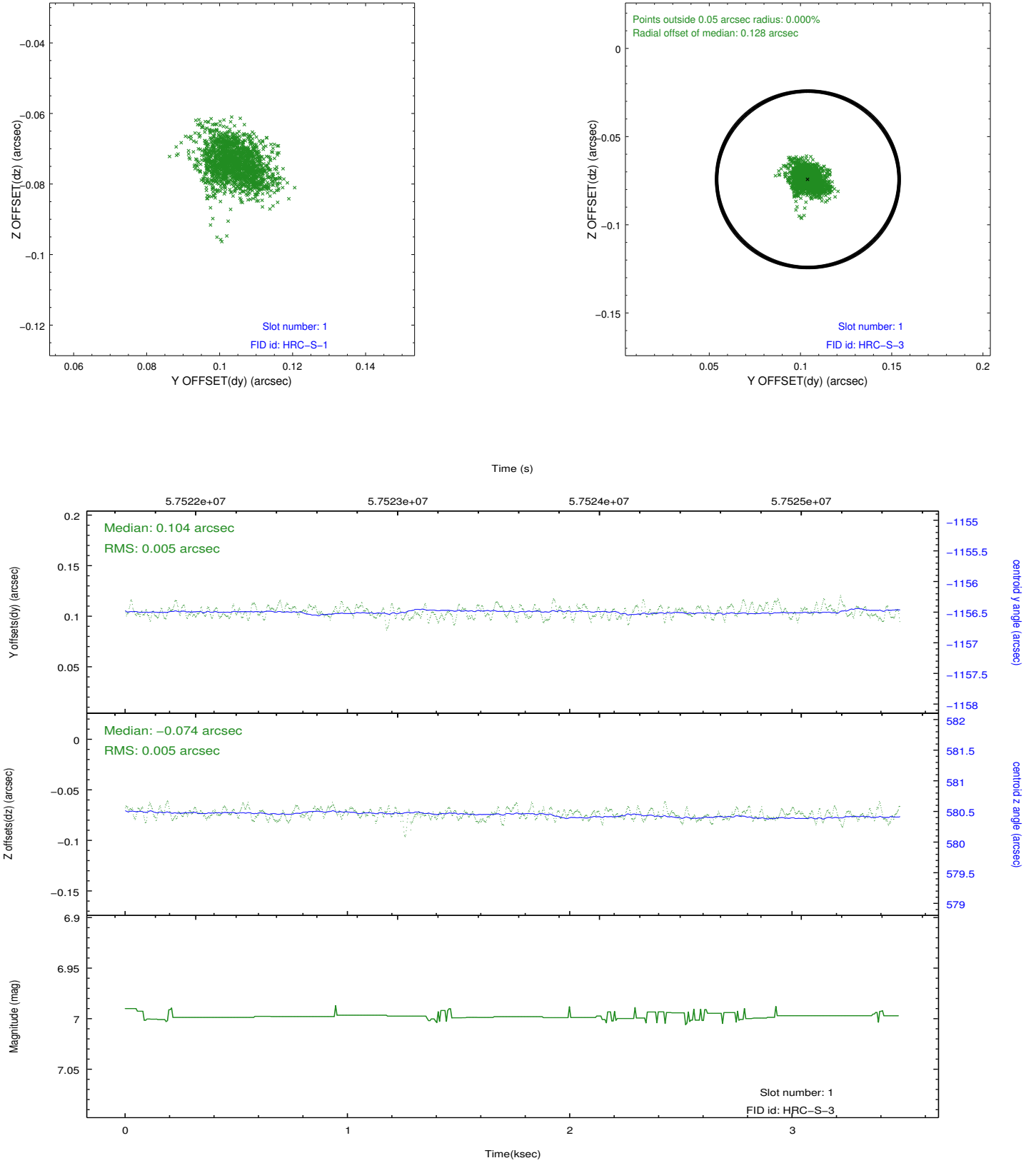


2.5 FID Slots

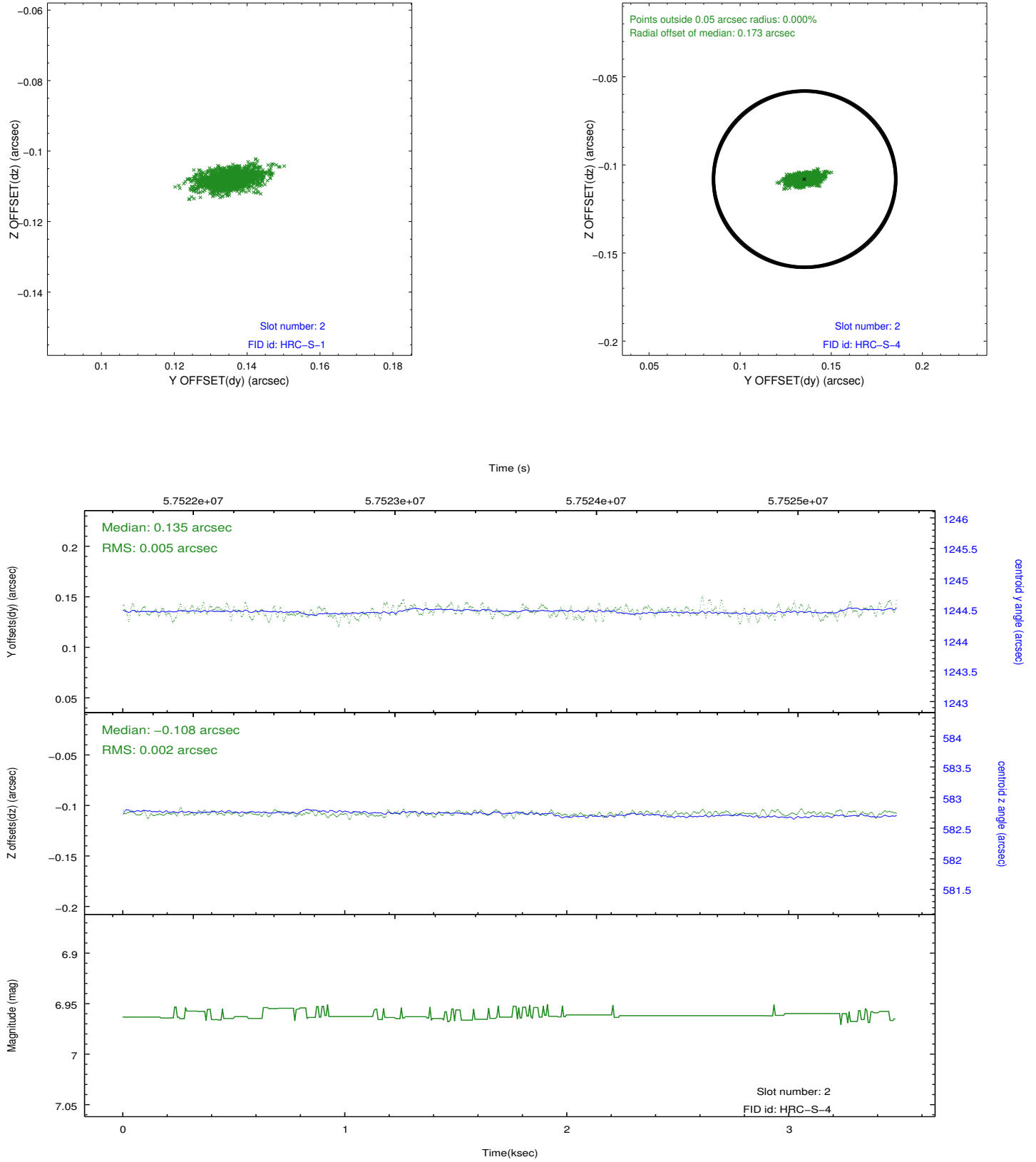
2.5.1 Slot 0



2.5.2 Slot 1



2.5.3 Slot 2



3 Point Sources

17.42 arcmin



A Summary

A.1 Status

V&V Scientist	Jen Lauer
V&V Date (YYYY-MM-DD)	2010.10.01
V&V Edition	2
V&V Disposition and Status	OK
V&V Charge Time	3.202

A.2 Comments

Test of UV Sensitivity. The source is off-axis and near the edge of the chip. It is distorted, with a 'cat's eye' shape, and has a lower resolution than an on-axis source. =====
The guide star in slot 5 was manually excluded from the processing due to poor data quality.