

V&V Reference Report

L2 ASCDS Version : 8.1.1

Observation 1508 - L2 Version 4

Chandra X-Ray Center

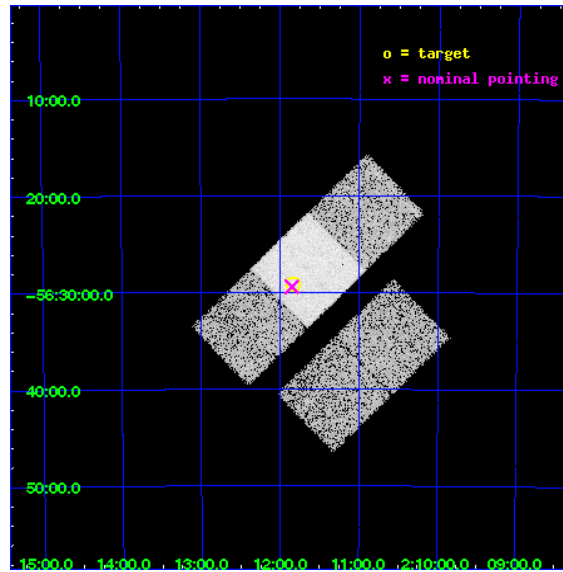
L2 Processing Date : Nov 26 2009

Contents

1	Front	2
2	OBI	3
2.1	OBI	3
2.1.1	Images	3
2.1.2	Bias	3
2.1.3	Parameters	4
2.1.4	Events	4
2.2	Compared Parameters	5
2.3	Aspect	6
2.4	Star Slots	9
2.4.1	Slot 3	9
2.4.2	Slot 4	10
2.4.3	Slot 5	11
2.4.4	Slot 6	12
2.4.5	Slot 7	13
2.5	FID Slots	14
2.5.1	Slot 0	14
2.5.2	Slot 1	15
2.5.3	Slot 2	16
3	Gratings	17
3.1	HEG Arm	17
3.2	MEG Arm	19
A	Summary	21
A.1	Status	21
A.2	Comments	21

1 Front

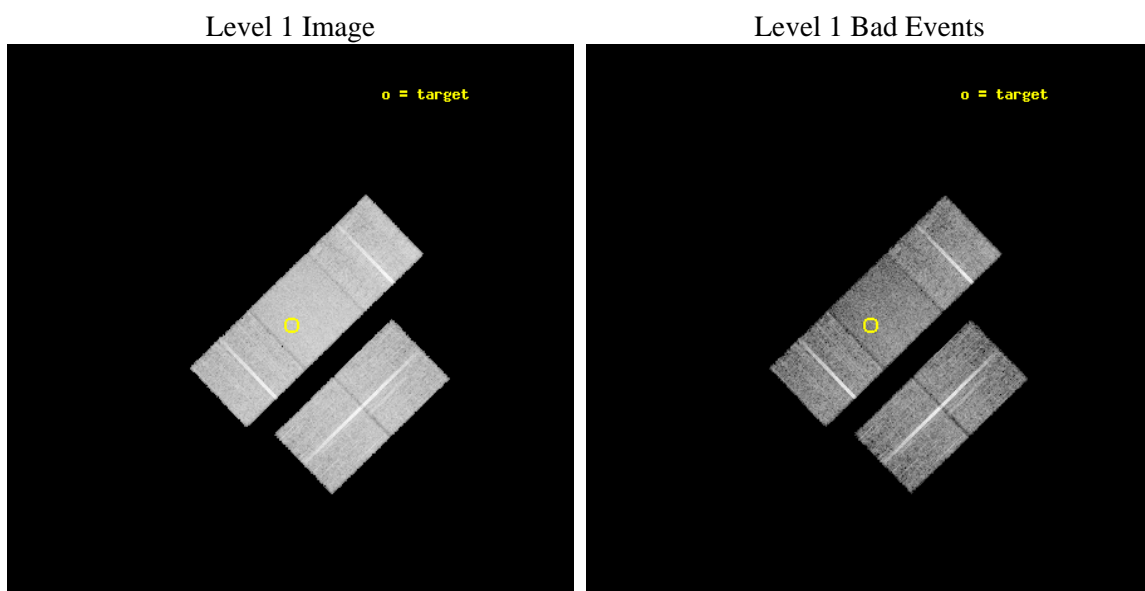
seq_num	980458	Sequence number
obs_id	1508	Observation id
title	 	Proposal title
observer	Dr. CXC Calibration	Principal investigator
object	SI Safing Test 2	Source name
dtcycle	0	
cycle	P	events from which exps? Prim/Second/Both
ra_targ	32.959	Observer's specified target RA
dec_targ	-56.486	Observer's specified target Dec
ra_nom	32.962519055852	Nominal RA
dec_nom	-56.490524959112	Nominal Dec
roll_nom	315.85359912978	Nominal Roll
revision	4	Processing version of data
ontime	11061.524764635	Sum of GTIs [s]
livetime	10921.457077614	Livetime [s]
ontime2	10646.675354421	Sum of GTIs [s]
ontime3	10649.91628471	Sum of GTIs [s]
ontime6	10656.398364723	Sum of GTIs [s]
ontime7	11061.524764635	Sum of GTIs [s]
ontime8	10675.844524972	Sum of GTIs [s]
l2events	64740	Number of level 2 events



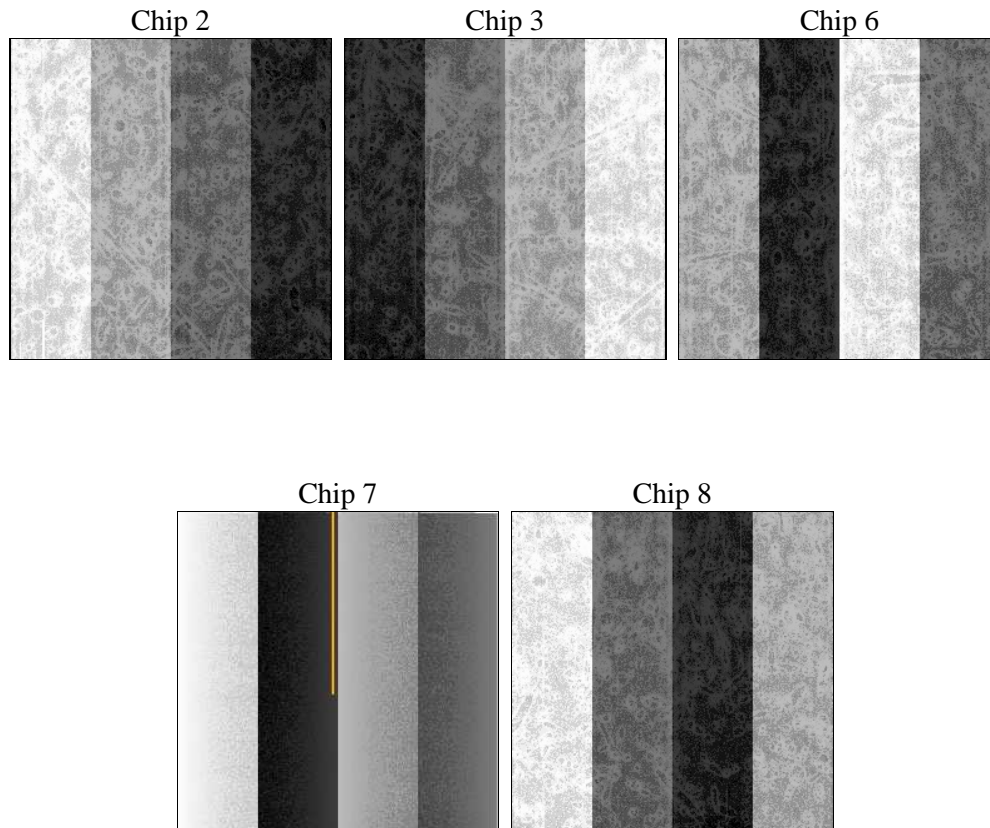
2 OBI

2.1 OBI

2.1.1 Images



2.1.2 Bias



2.1.3 Parameters

obi_num	0	Obi number	sched_exp_time	17884.054000	Scheduled observation exposure time
ascdsver	8.1.1	ASCDS version number	ontime	11061.524764635	Sum of GTIs [s]
caldsver	4.1.4	 	ontime2	10646.675354421	Sum of GTIs [s]
date	2009-11-26T06:26:49	Date and time of file creation	ontime3	10649.91628471	Sum of GTIs [s]
revision	5	Processing version of data	ontime6	10656.398364723	Sum of GTIs [s]
			ontime7	11061.524764635	Sum of GTIs [s]
			ontime8	10675.844524972	Sum of GTIs [s]
			l1events	466830	Number of level 1 events

2.1.4 Events

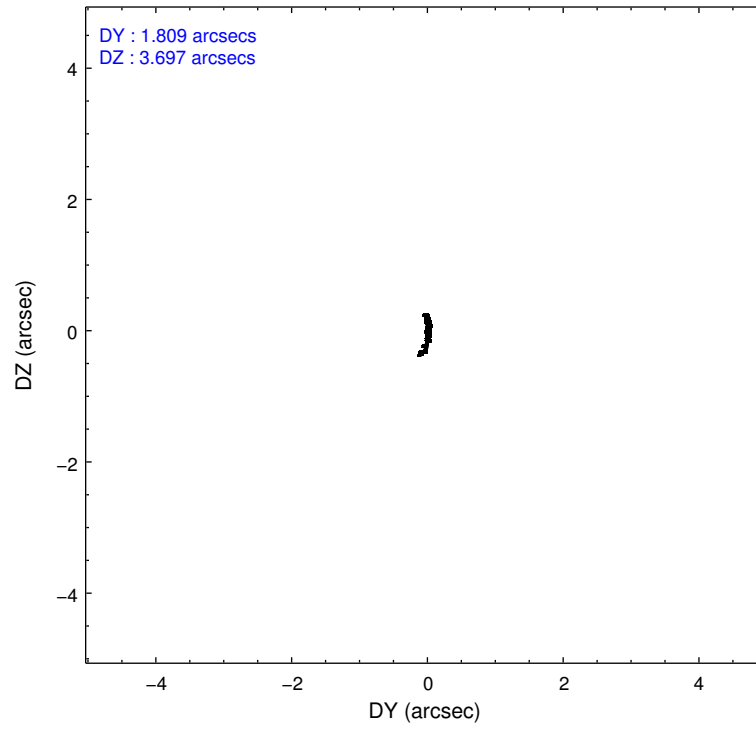
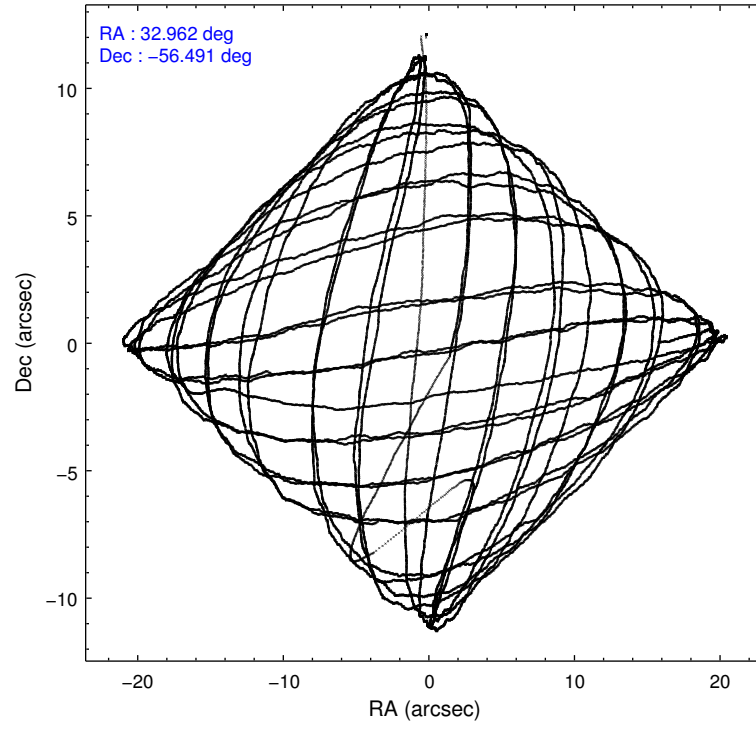
	ccd 2	ccd 3	ccd 6	ccd 7	ccd 8
level 1 events	89370	85004	88273	97911	106272
rejected events	81784	77088	79934	62446	89013
rejected %	91%	90%	90%	63%	83%

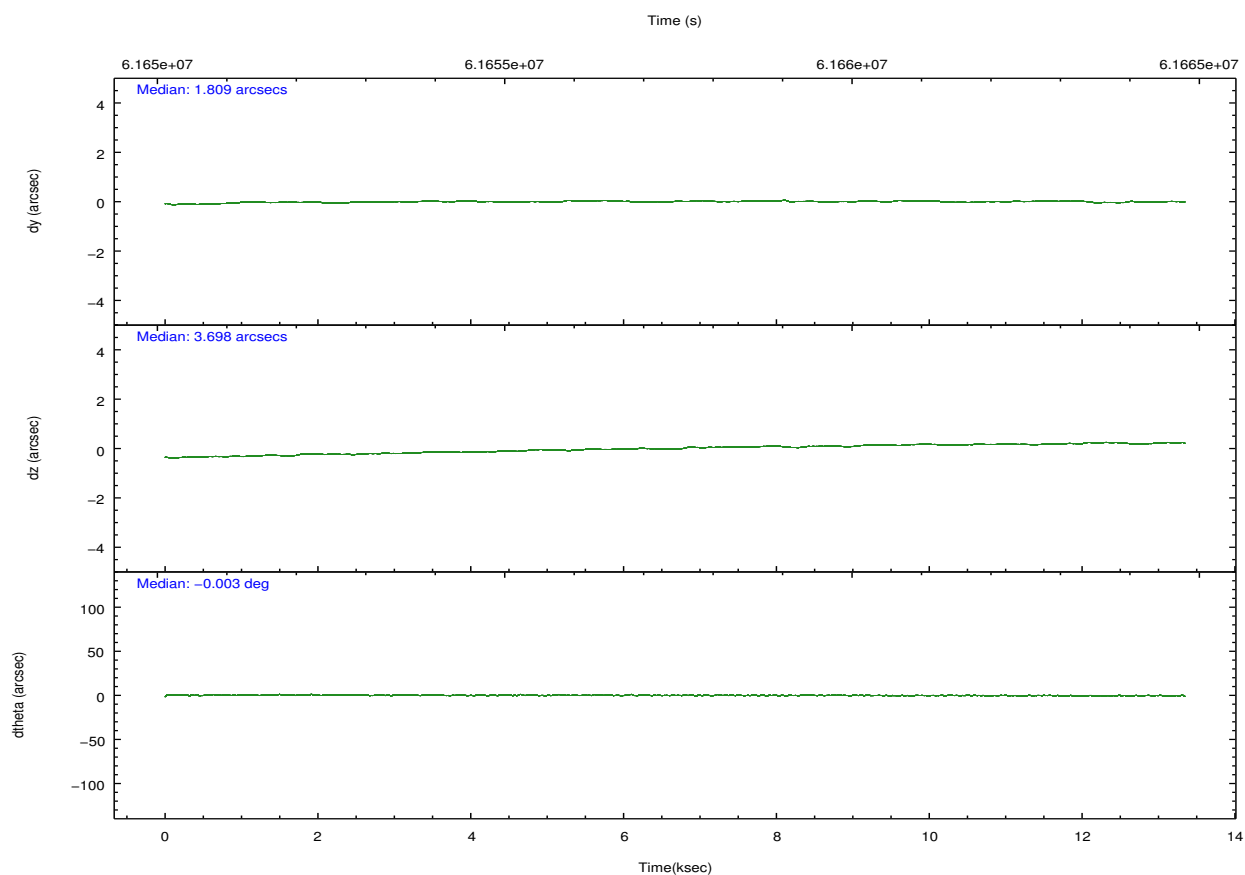
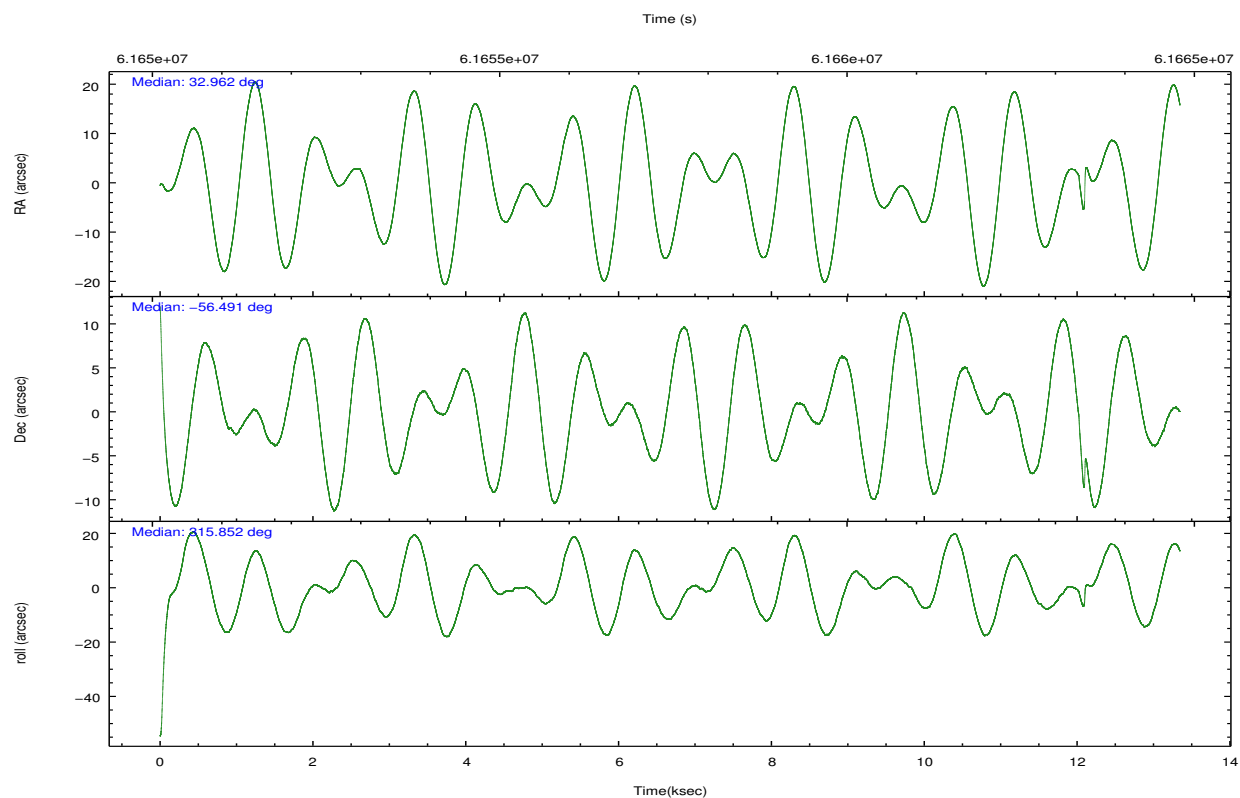
	ccd 2	ccd 3	ccd 6	ccd 7	ccd 8
grade 0 events	1556	1605	1460	1803	3800
	1%	1%	1%	1%	3%
grade 1 events	12	11	23	66	36
	0%	0%	0%	0%	0%
grade 2 events	3103	3279	3365	7643	5595
	3%	3%	3%	7%	5%
grade 3 events	534	541	559	2104	1388
	0%	0%	0%	2%	1%
grade 4 events	535	486	570	1756	1351
	0%	0%	0%	1%	1%
grade 5 events	1445	1641	1906	5927	2544
	1%	1%	2%	6%	2%
grade 6 events	1972	2124	2531	23000	5328
	2%	2%	2%	23%	5%
grade 7 events	80213	75317	77859	55612	86230
	89%	88%	88%	56%	81%

2.2 Compared Parameters

Parameter	Planned	Actual	Parameter	Planned	Actual
Instrument	ACIS	ACIS	Obspar format version number	6	6
Detector	ACIS-23678	ACIS-23678	Obspar file type	PREDICTED	ACTUAL
Grating	HETG	HETG	Obspar update status	NONE	UPDATED
Data mode	VFAINT	VFAINT	Number of optional ACIS chips dropped	0	0
Observation mode	POINTING	POINTING	On-chip summing requested	N	N
Pointing RA	32.914123	32.96251905585233	Subarray requested	NONE	NONE
Pointing Dec	-56.483711	-56.49052495911184	Alternating exposures requested	N	N
Pointing Roll	315.656671	315.8535991297779	Primary exposure time	0.000000	3.2
SIM focus pos (mm)	-0.684267	-0.6828225247311905			
SIM defocus (mm)	0	0.001444936568705701			
SIM translation stage pos (mm)	-190.132523	-190.1400660498719			
SIM translation stage offset (mm)	0	0.00754346686406393			
Observation start time	61651281.184000	61650249.571384			
Observation start date	1999-12-15T13:20:17	1999-12-15T13:04:09			
Observation end time	61669165.184000	61665517.971937			
Observation end date	1999-12-15T18:18:21	1999-12-15T17:18:37			
Read mode	TIMED	TIMED			

2.3 Aspect



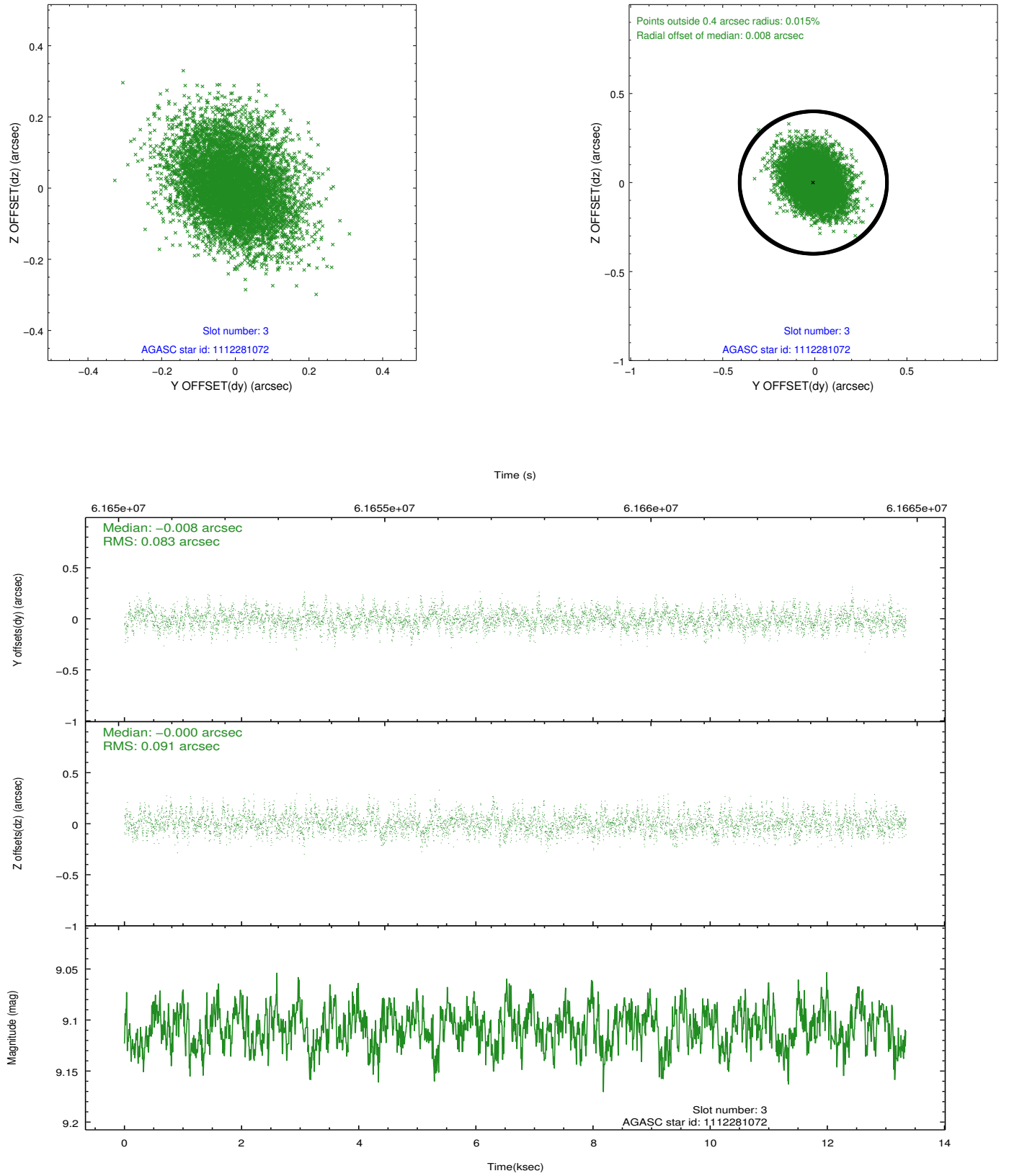


Slot Statistics

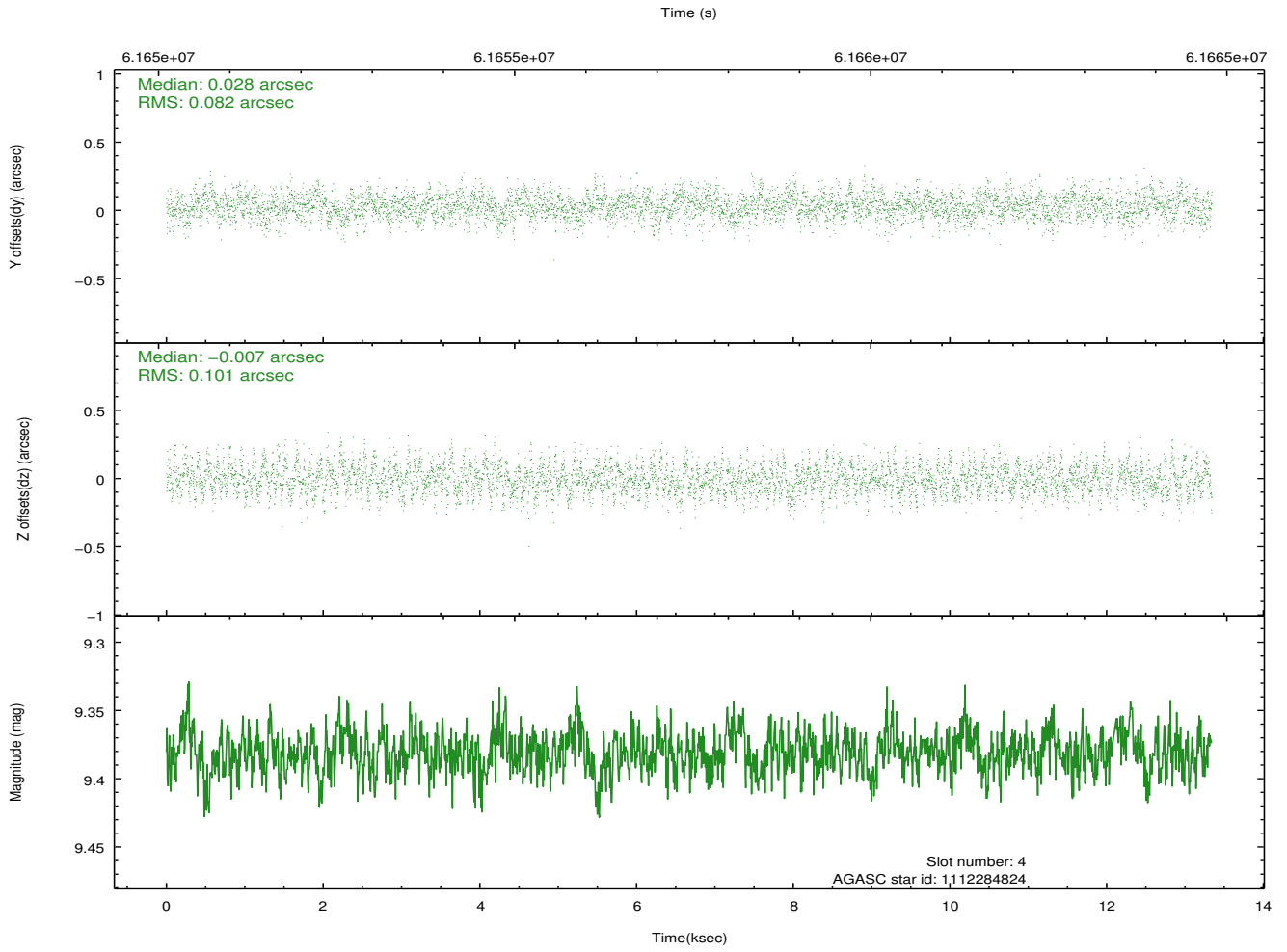
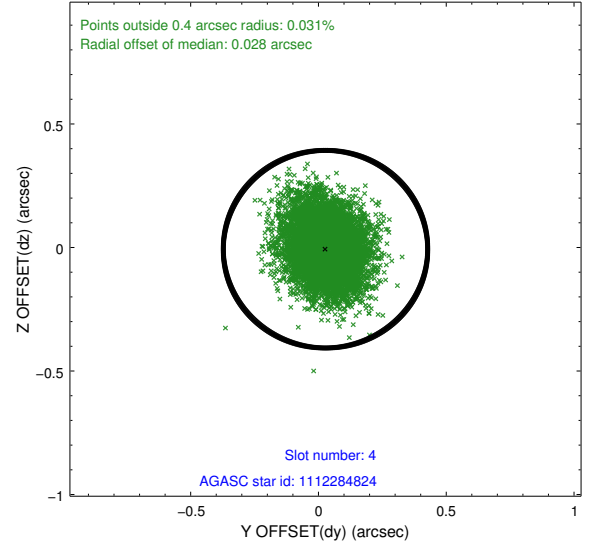
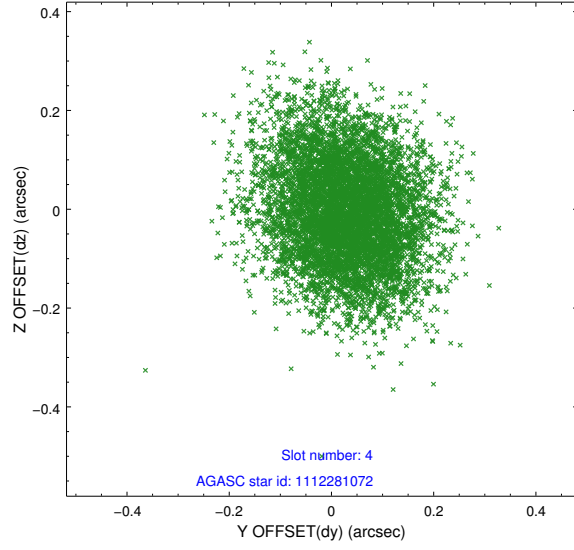
slot	status	id	mag	n_pts	med_dy	med_dz	dr1	dr2	ra	dec	mean_y	mean_z
0	FID	ACIS-S-2	7.13	6510	-0.004	-0.065	0.006	0.009	0.000000	0.000000	-754.46	-1724.80
1	FID	ACIS-S-4	7.22	6510	0.014	0.019	0.004	0.008	0.000000	0.000000	2158.84	183.59
2	FID	ACIS-S-5	7.26	6508	-0.042	0.055	0.005	0.009	0.000000	0.000000	-1807.16	177.51
3	GUIDE	1112281072	9.11	6483	-0.008	-0.000	0.132	0.215	32.588935	-55.891052	-1959.04	1066.56
4	GUIDE	1112284824	9.38	6481	0.028	-0.007	0.139	0.225	34.028964	-56.649515	2008.03	1103.33
5	GUIDE	1112282360	10.27	6419	-0.093	0.057	0.246	0.432	32.676336	-55.715728	-2275.87	1640.54
6	GUIDE	1112277336	9.39	6483	0.081	-0.074	0.129	0.213	32.721854	-56.847866	646.42	-1201.65
7	GUIDE	1112278392	11.08	6485	-0.015	0.005	0.318	0.520	32.730662	-57.135549	1385.04	-1928.58

2.4 Star Slots

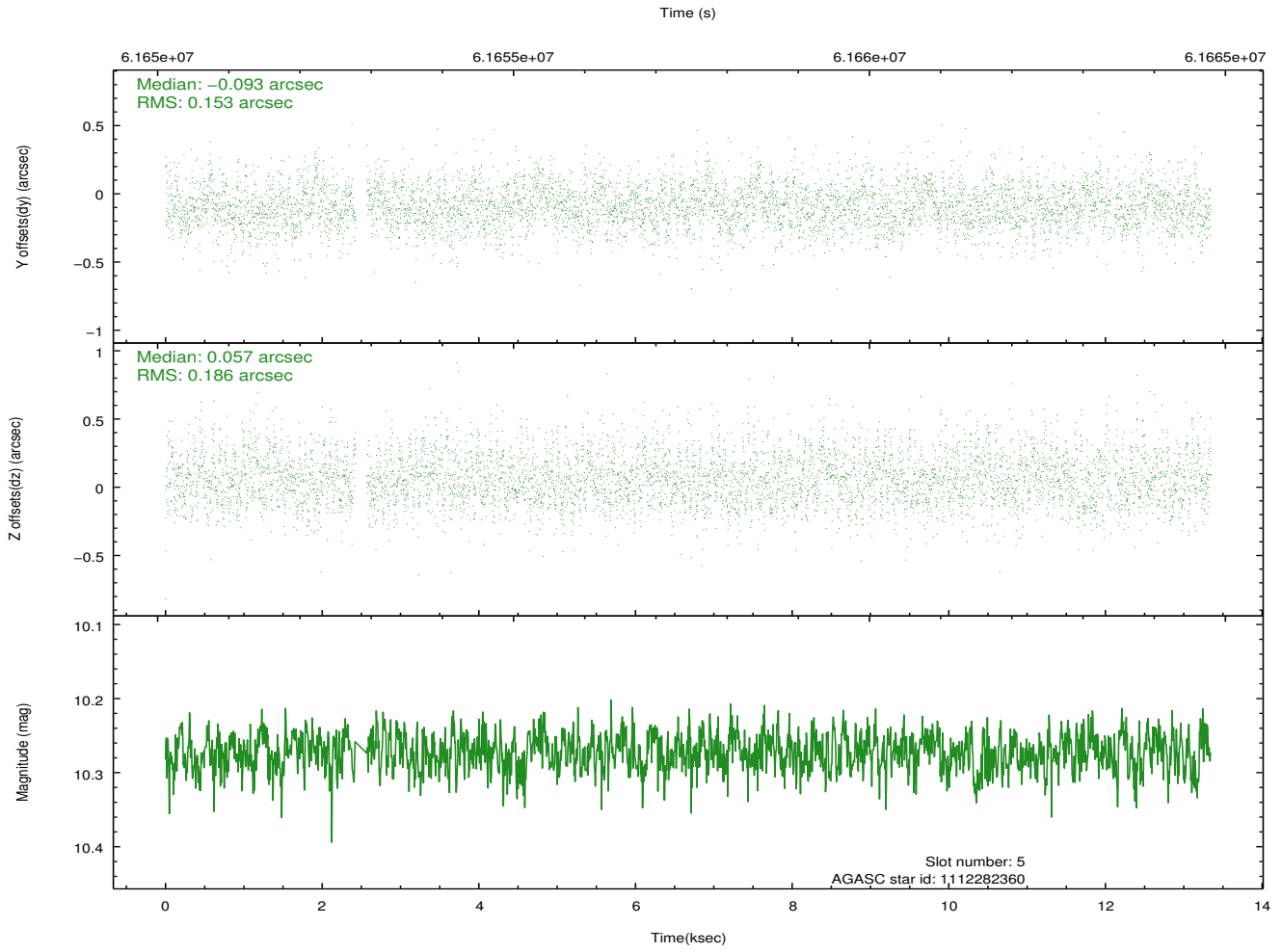
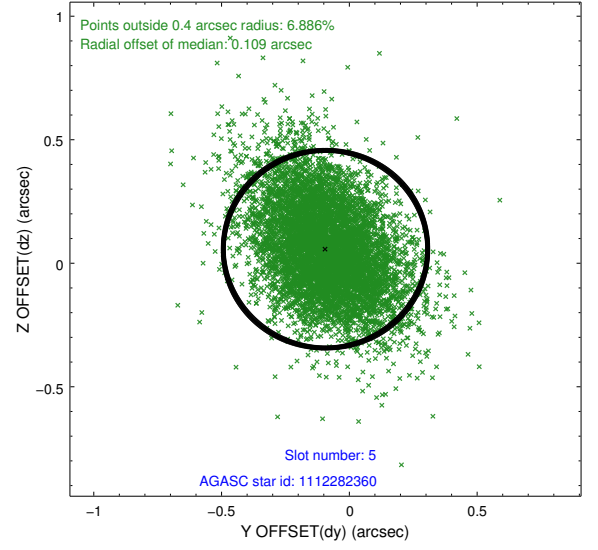
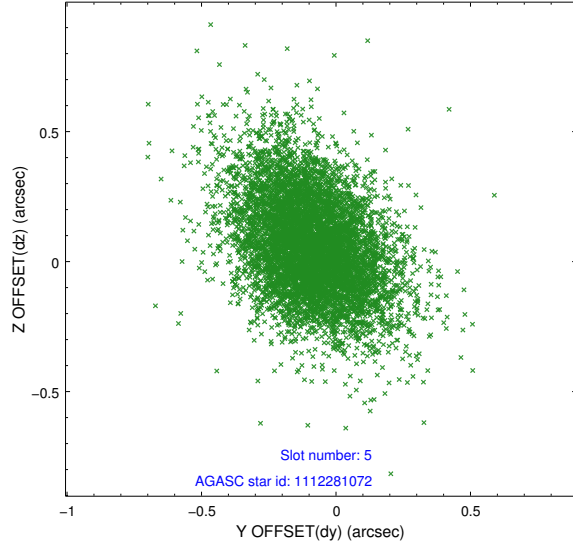
2.4.1 Slot 3



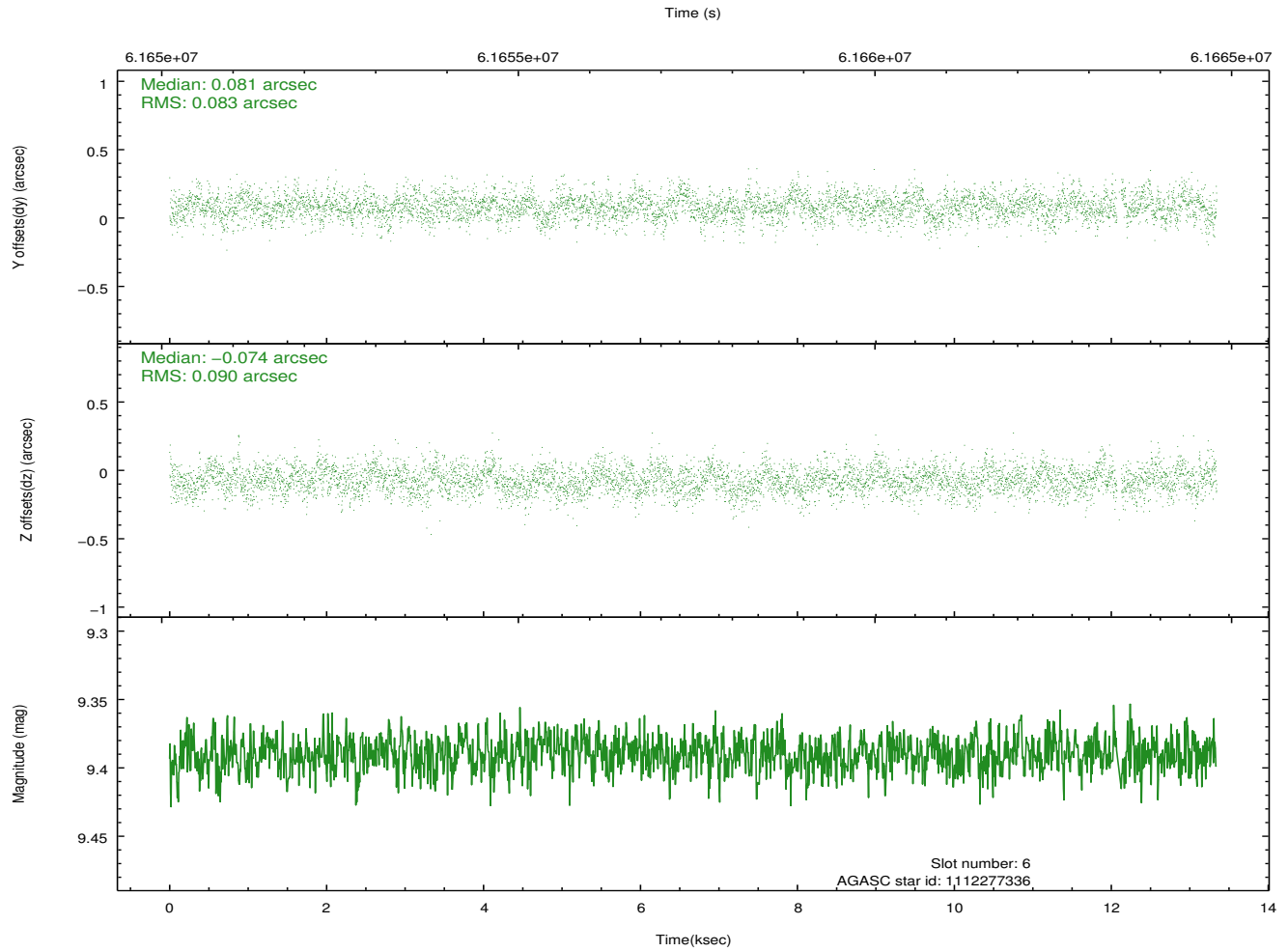
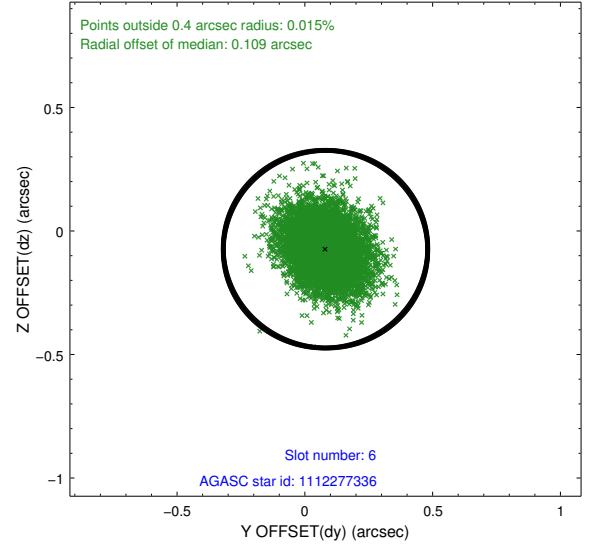
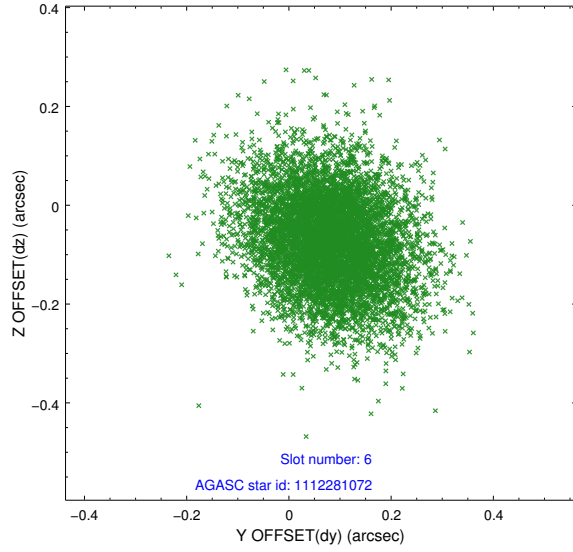
2.4.2 Slot 4



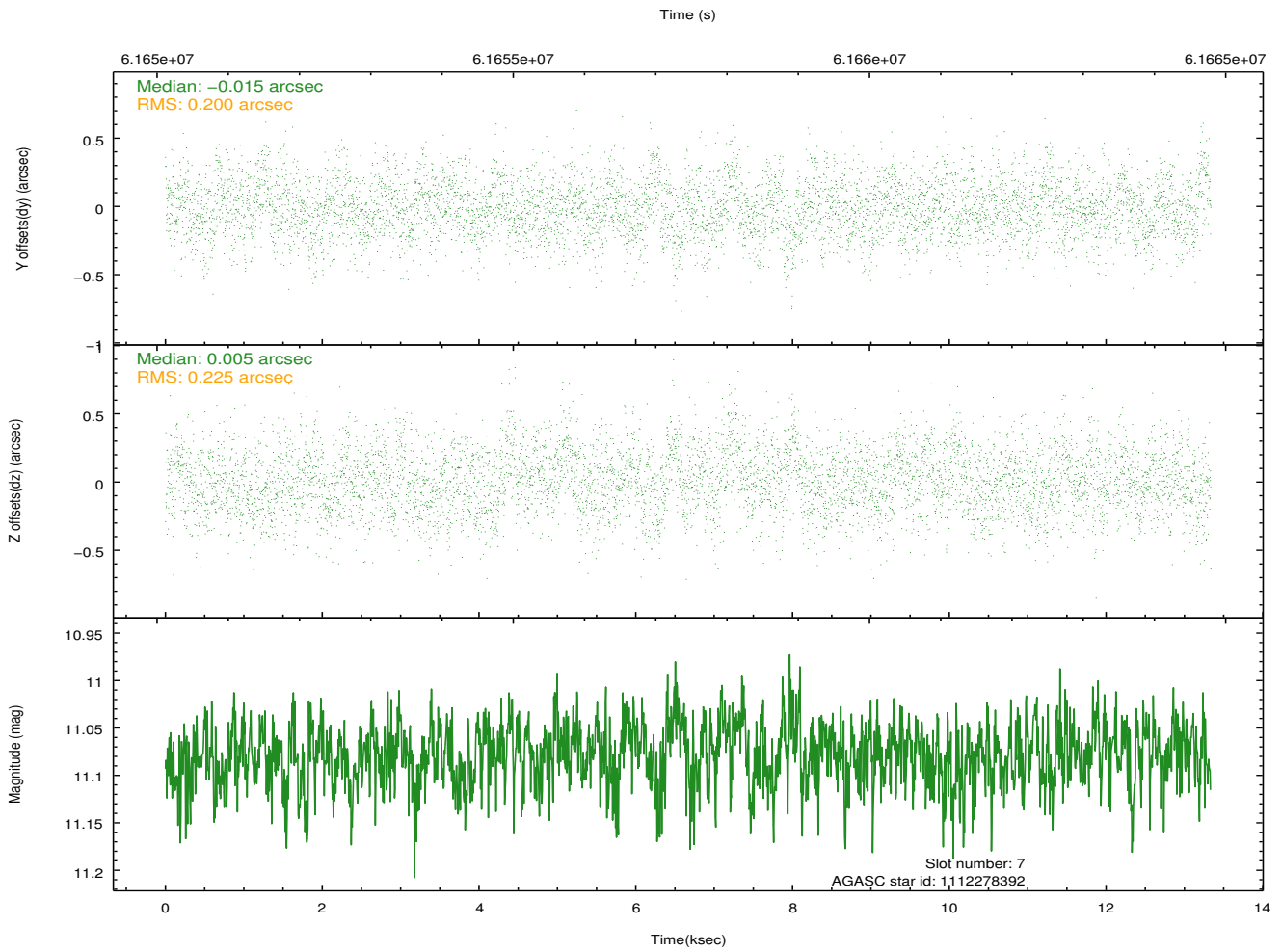
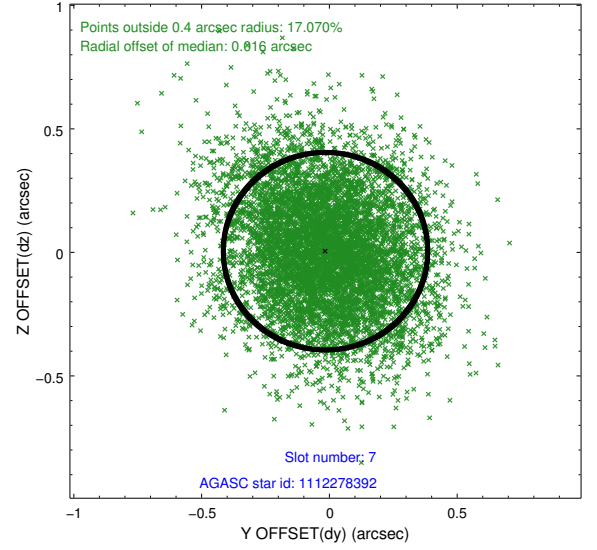
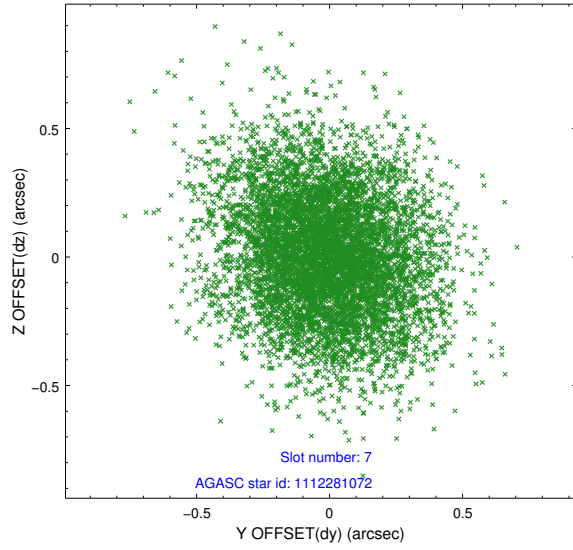
2.4.3 Slot 5



2.4.4 Slot 6

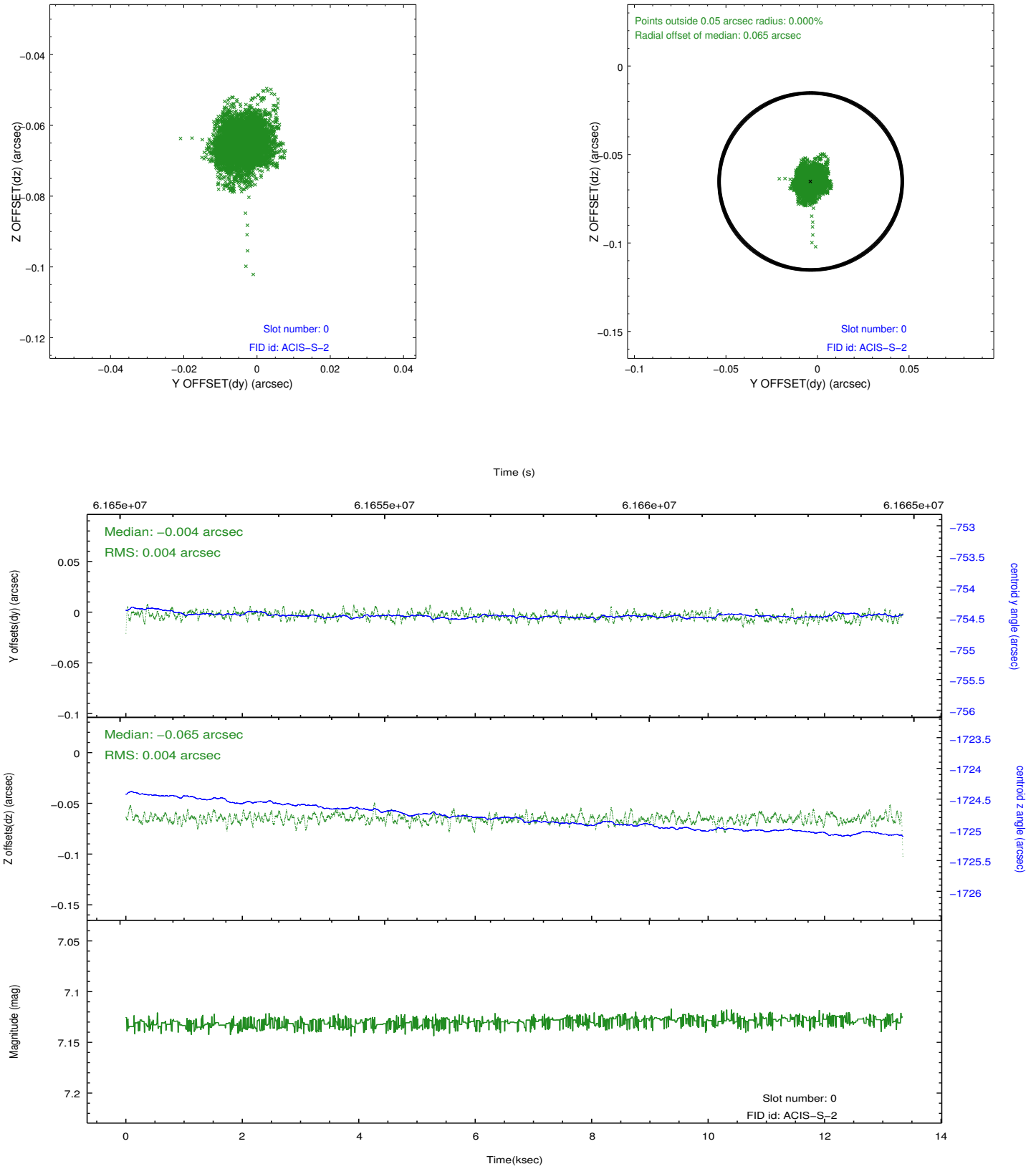


2.4.5 Slot 7

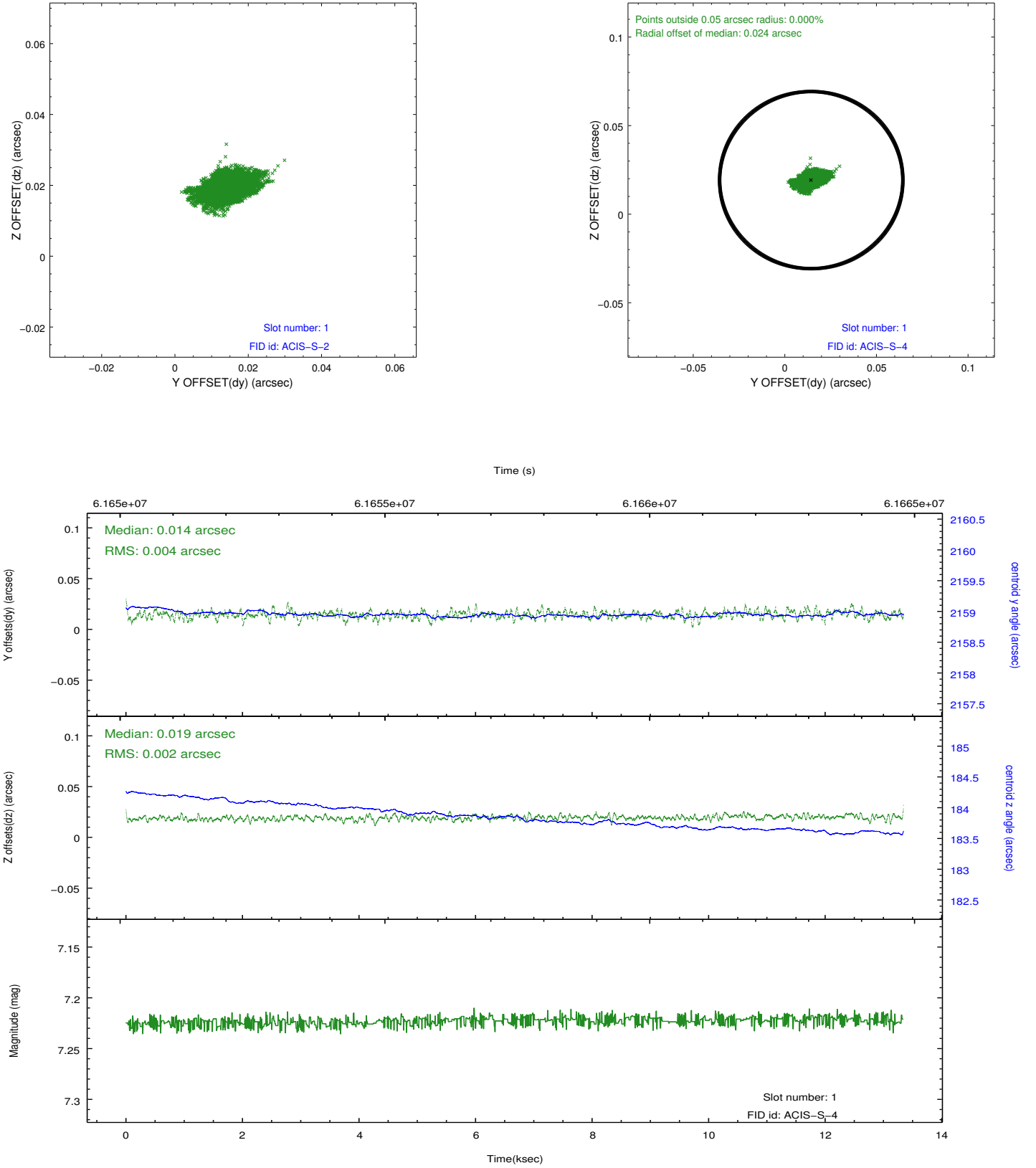


2.5 FID Slots

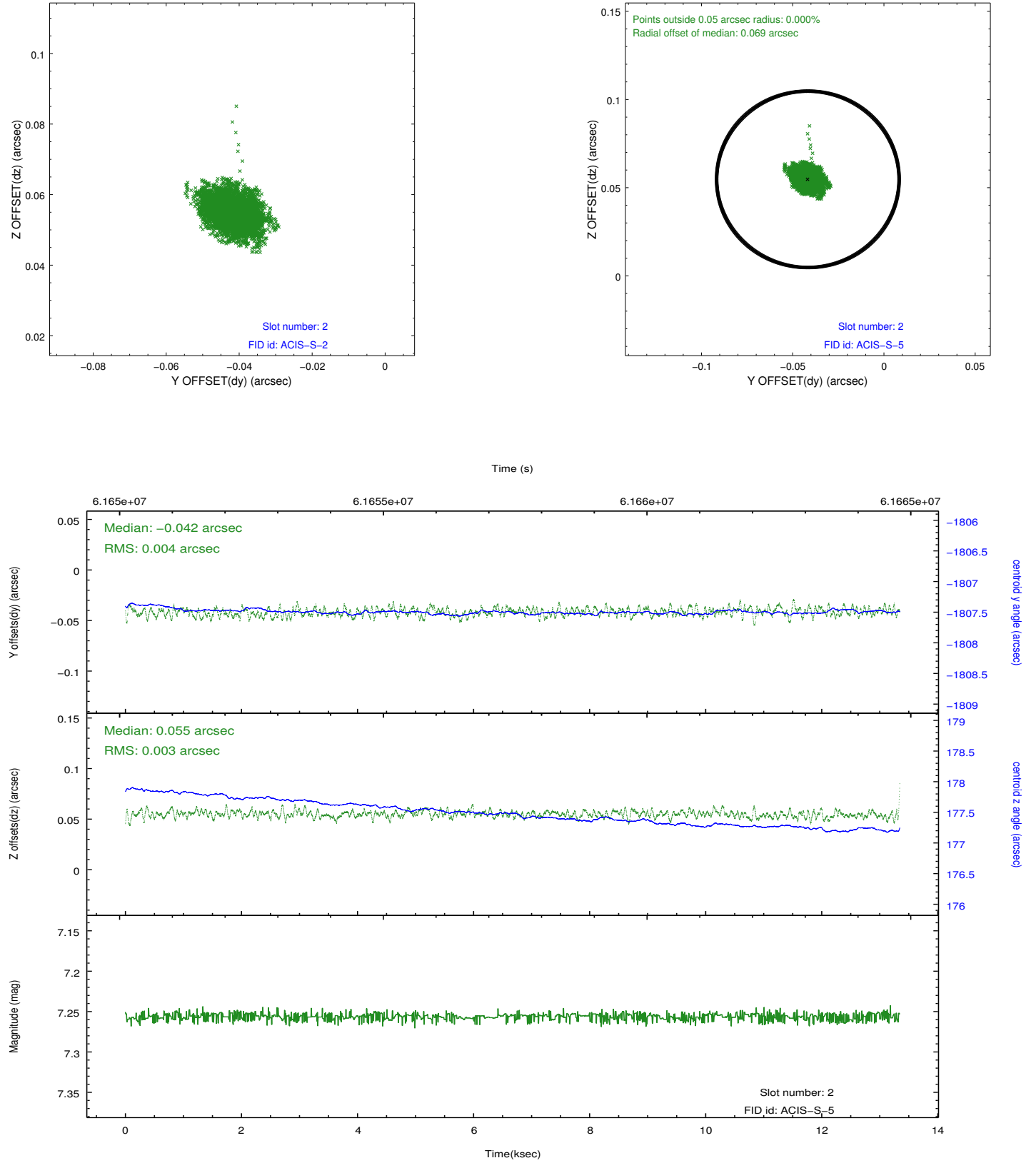
2.5.1 Slot 0



2.5.2 Slot 1

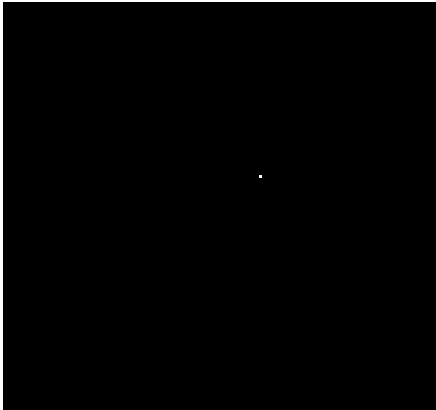


2.5.3 Slot 2

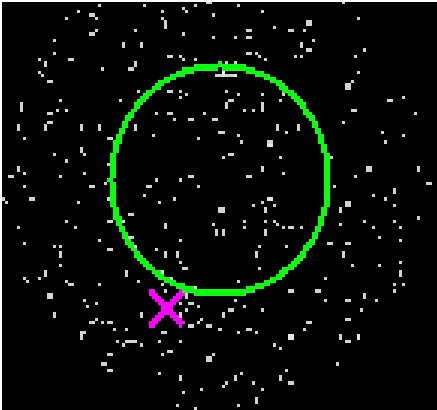


3 Gratings

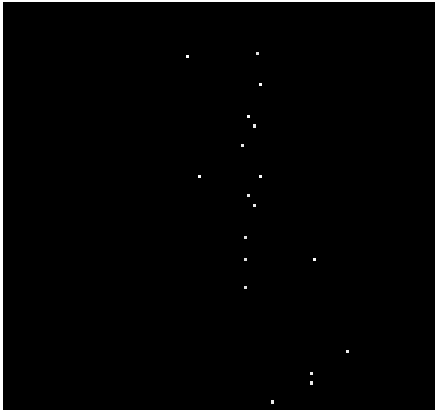
3.1 HEG Arm



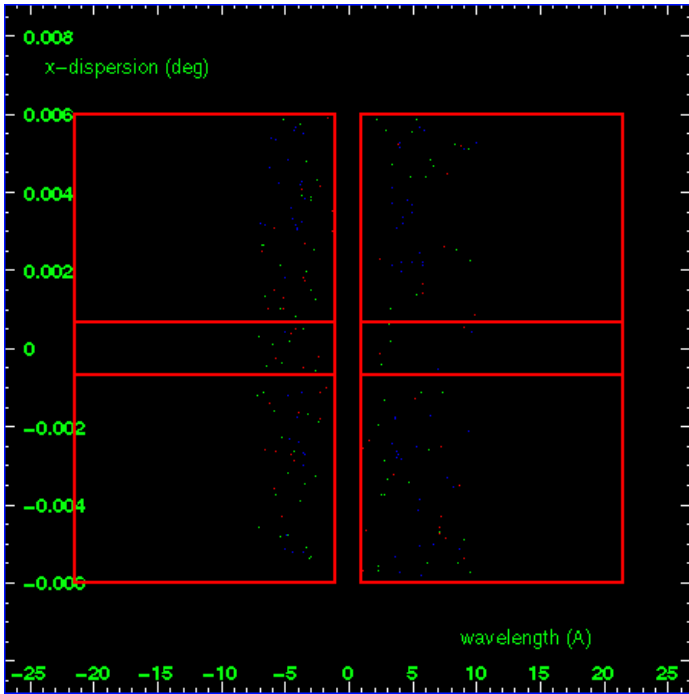
HEG Order Sort 123



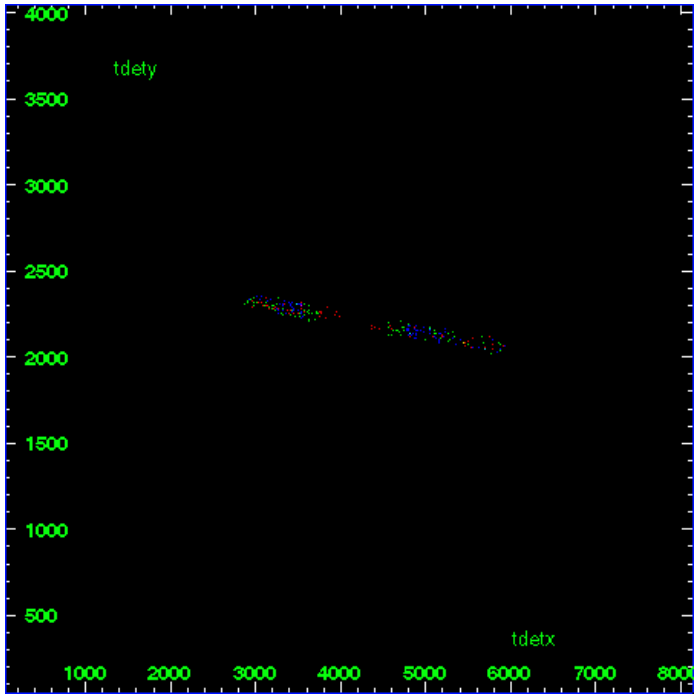
HEG Zero Order



HEG Order Sort ALL

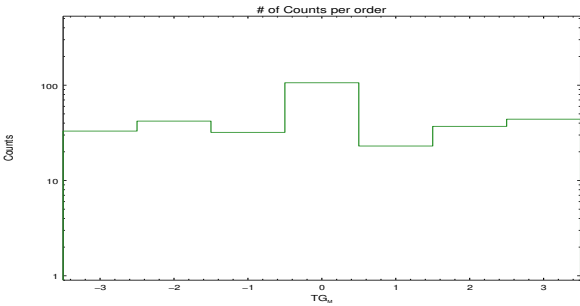


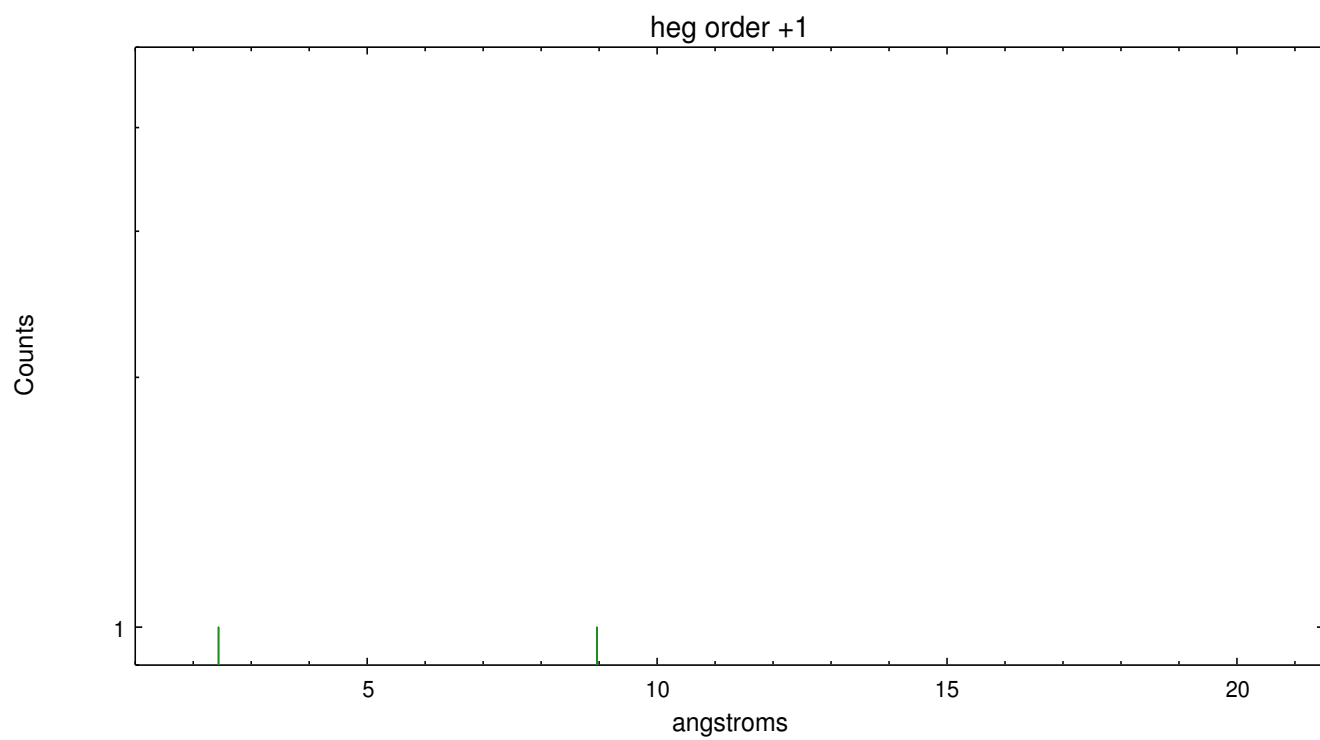
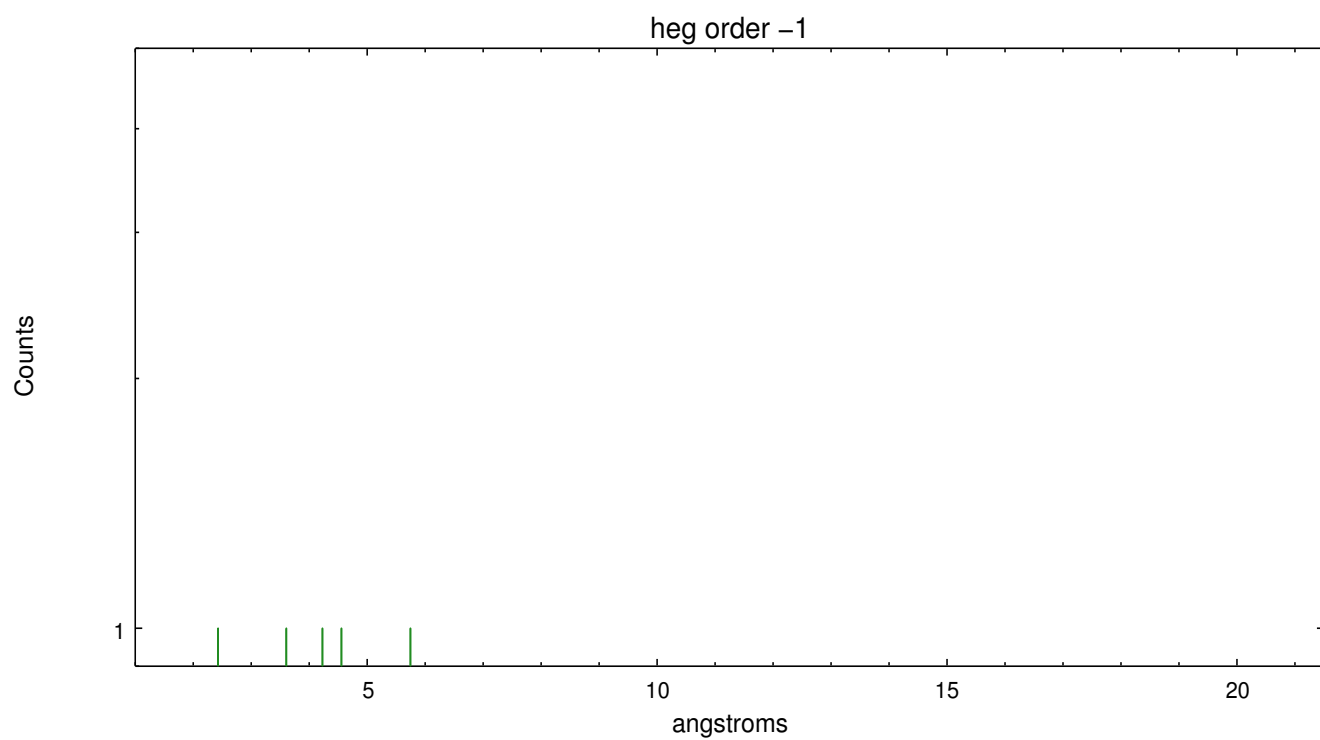
Spot Image HEG



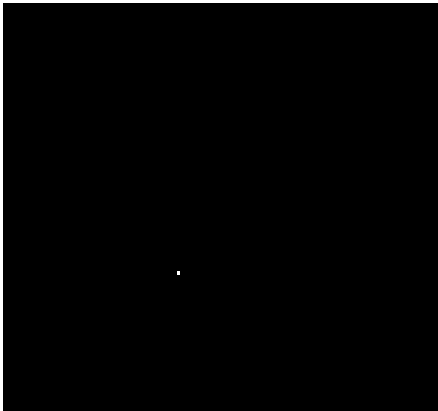
Full Detector HEG

	order -3	order -2	order -1	order 0	order 1	order 2	order 3
Events	33	42	32	106	23	37	44

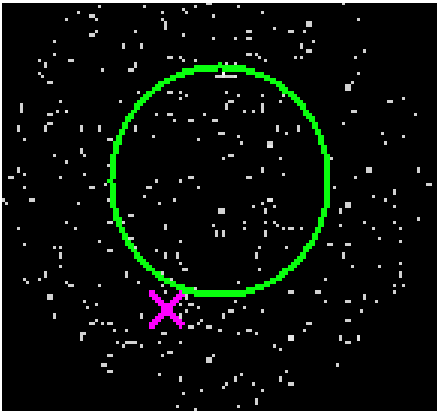




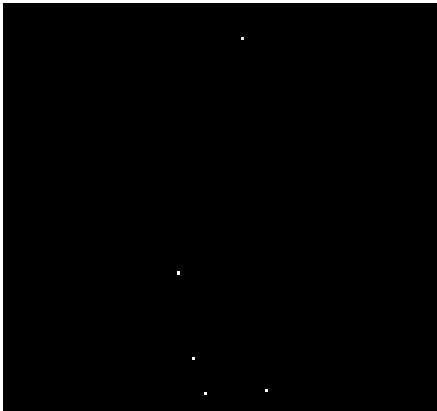
3.2 MEG Arm



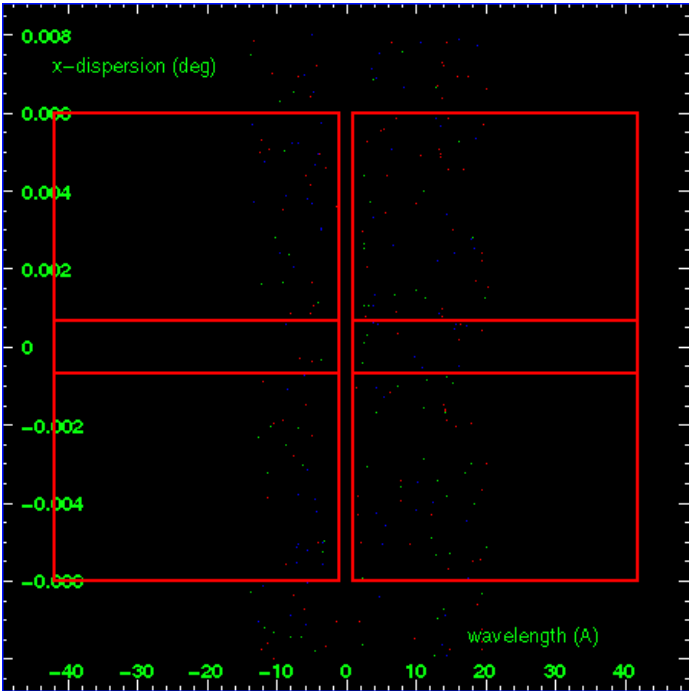
MEG Order Sort 123



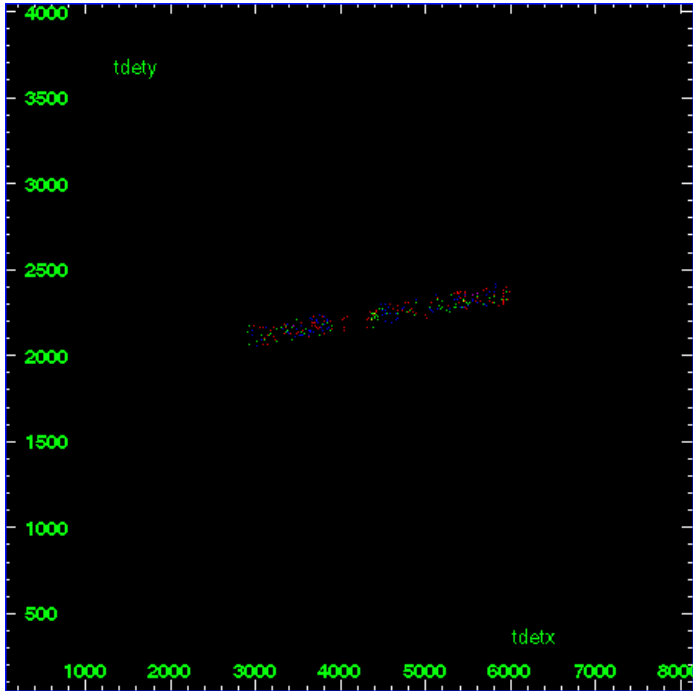
MEG Zero Order



MEG Order Sort ALL

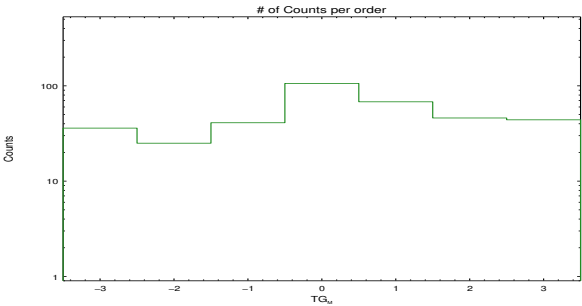


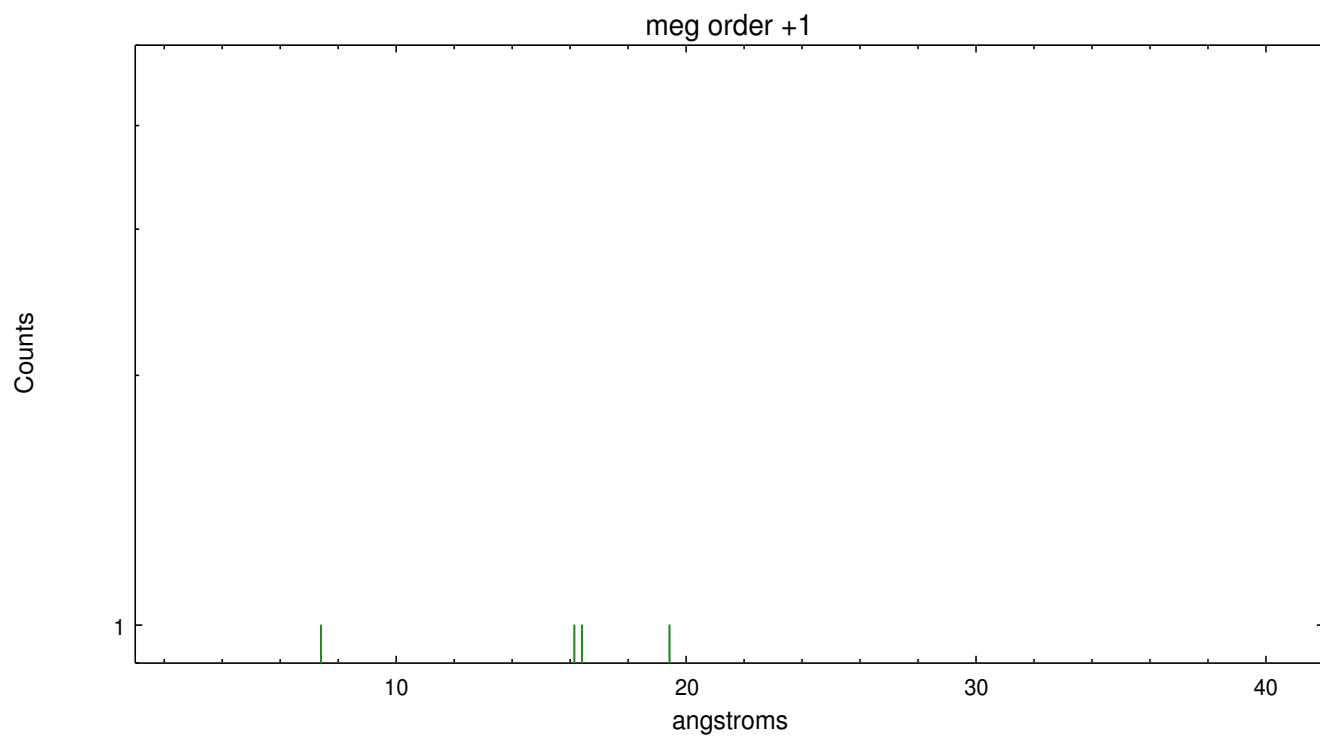
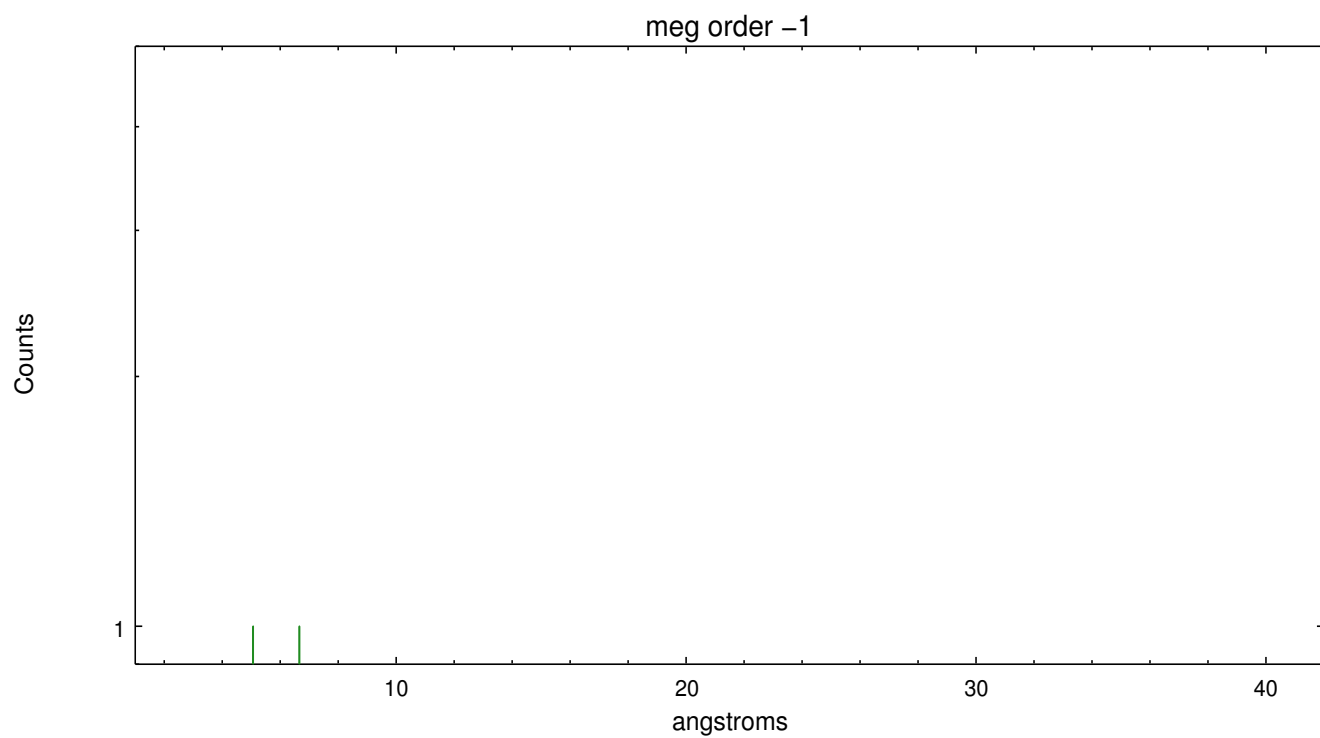
Spot Image MEG



Full Detector MEG

	order -3	order -2	order -1	order 0	order 1	order 2	order 3
Events	36	25	41	106	68	46	44





A Summary

A.1 Status

V&V Scientist	Joy Nichols
V&V Date (YYYY-MM-DD)	2010.04.06
V&V Edition	1
V&V Disposition and Status	OK
V&V Charge Time	17.86

A.2 Comments

Science Instrument safing test. No target.

===

Charge time for this ObsId remains at original value of 17.86 ks,
although
with the current processing the charge time would have been 11.06 ksec.