

V&V Reference Report

L2 ASCDS Version : 8.2.1

Observation 1293 - L2 Version 3

Chandra X-Ray Center

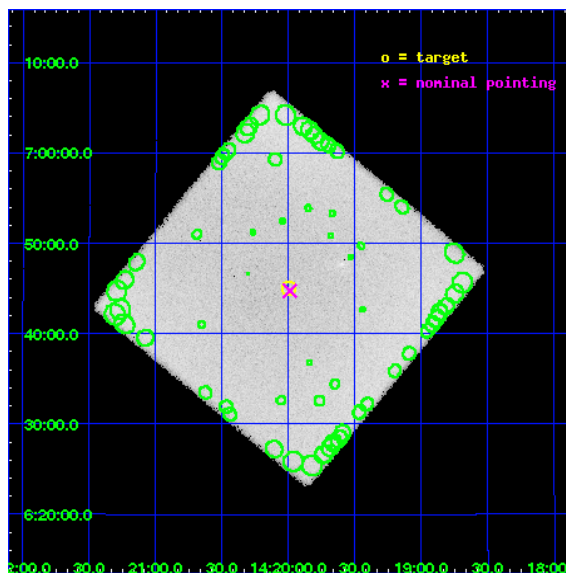
L2 Processing Date : Jan 12 2010

Contents

1	Front	2
2	OBI	3
2.1	OBI	3
2.1.1	Images	3
2.1.2	Parameters	4
2.1.3	Events	4
2.2	Compared Parameters	5
2.3	Aspect	6
2.4	Star Slots	9
2.4.1	Slot 3	9
2.4.2	Slot 4	10
2.4.3	Slot 5	11
2.4.4	Slot 6	12
2.4.5	Slot 7	13
2.5	FID Slots	14
2.5.1	Slot 0	14
2.5.2	Slot 1	15
2.5.3	Slot 2	16
3	Point Sources	17
A	Summary	18
A.1	Status	18
A.2	Comments	18

1 Front

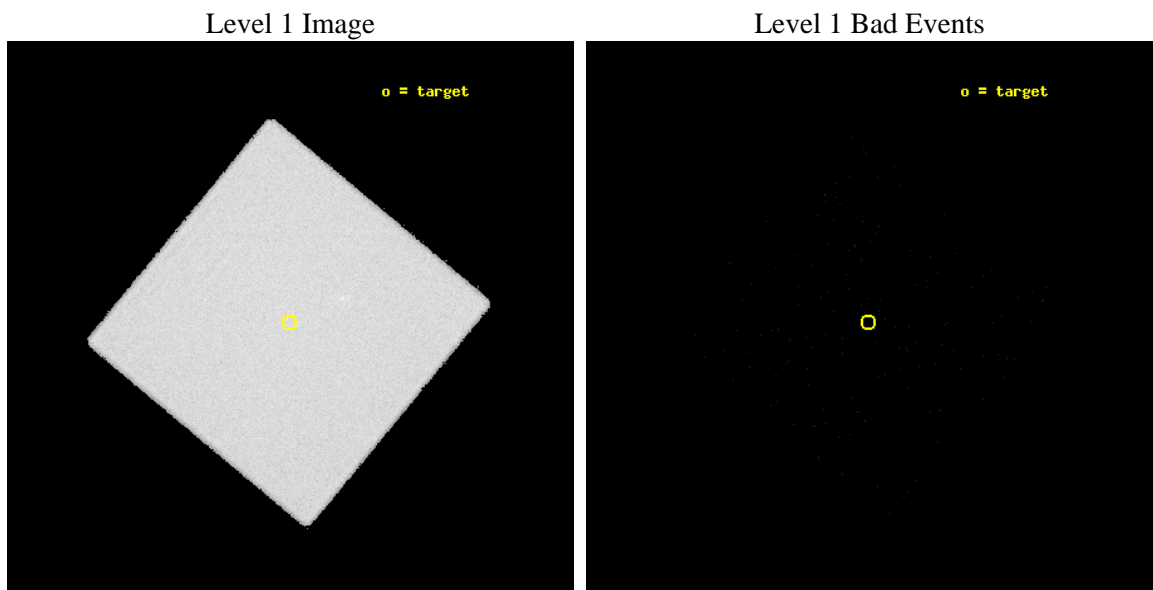
seq_num	980243	Sequence number
obs_id	1293	Observation id
title	 	Proposal title
observer	Dr. CXC Calibration	Principal investigator
object	MOSAIC BKGD 4	Source name
ra_targ	215.0	Observer's specified target RA
dec_targ	6.75	Observer's specified target Dec
ra_nom	214.99743606201	Nominal RA
dec_nom	6.7458353530187	Nominal Dec
roll_nom	264.6568639158	Nominal Roll
revision	3	Processing version of data
ontime	8227.9315455332	[s]
livetime	7999.7594368095	Ontime multiplied by DTCOR
l2events	561136	Number of level 2 events



2 OBI

2.1 OBI

2.1.1 Images



2.1.2 Parameters

obi_num	0	Obi number	sched_exp_time	8000.000000	Scheduled observation exposure time
ascdsver	8.2.1	Processing system revision	ontime	8227.9315455332	[s]
caldbver	4.1.5	 	l1events	1050931	Number of level 1 events
date	2010-01-12T18:14:24	Date and time of file creation			
revision	3	Processing version of data			

2.1.3 Events

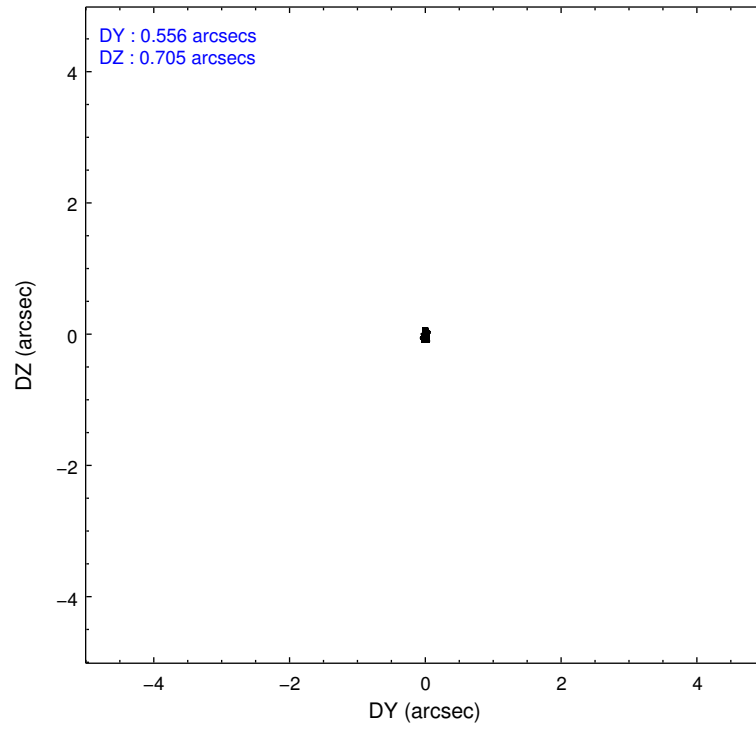
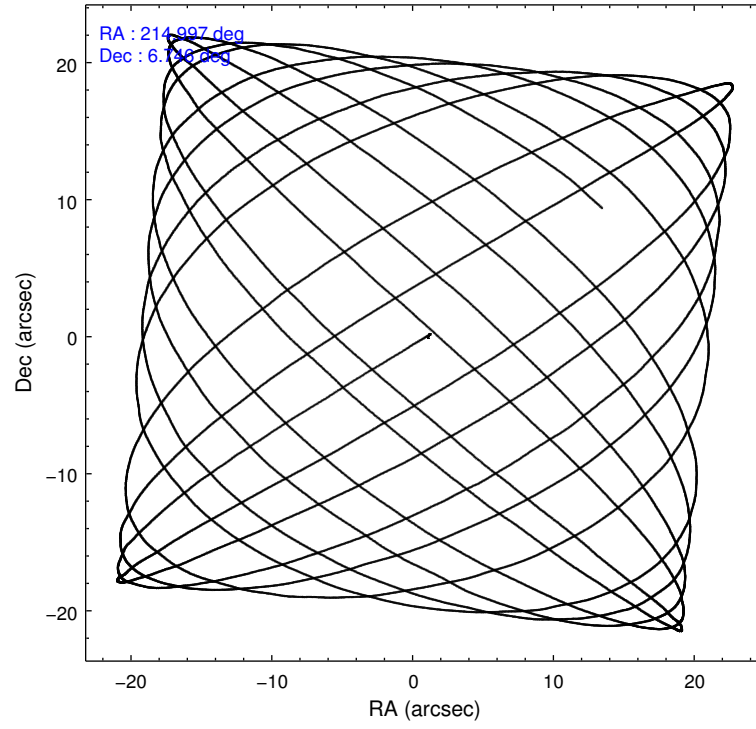
Level 1 Events

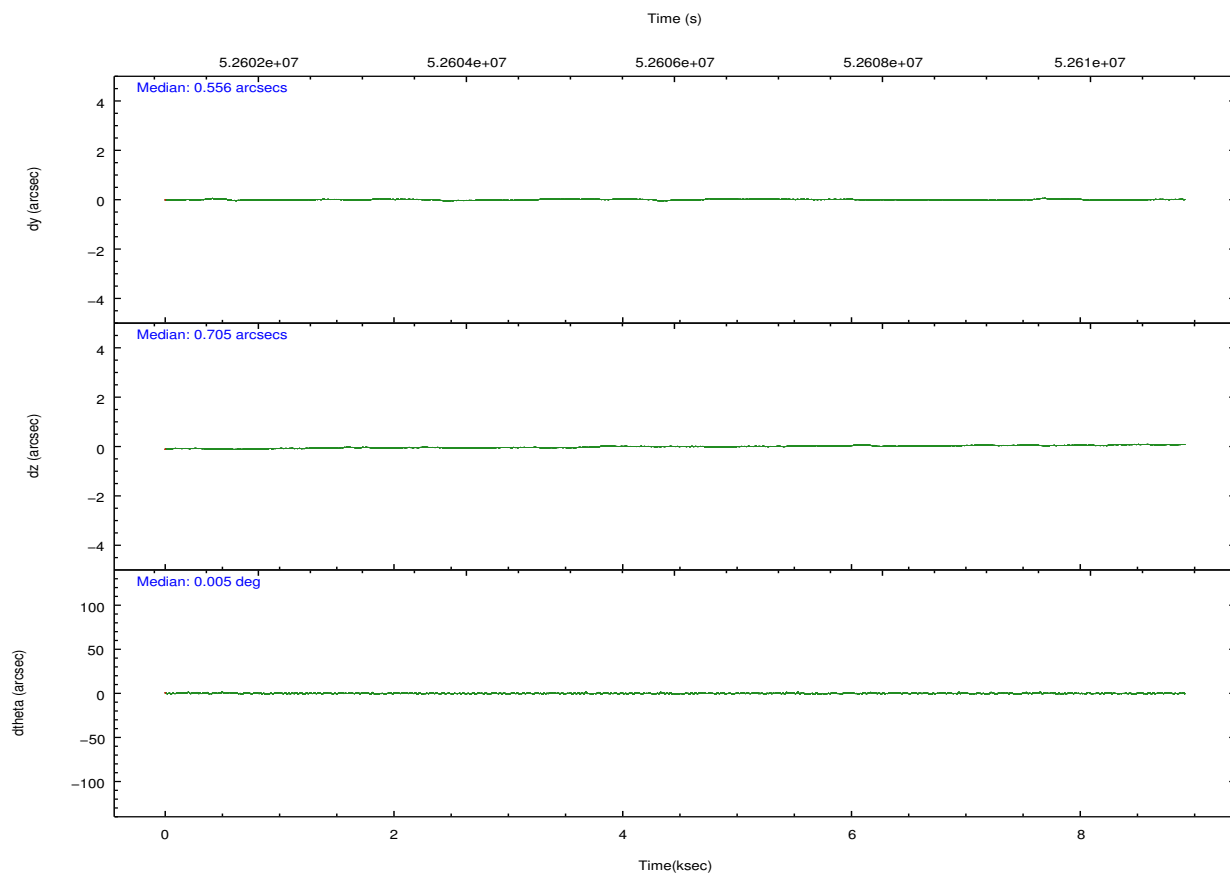
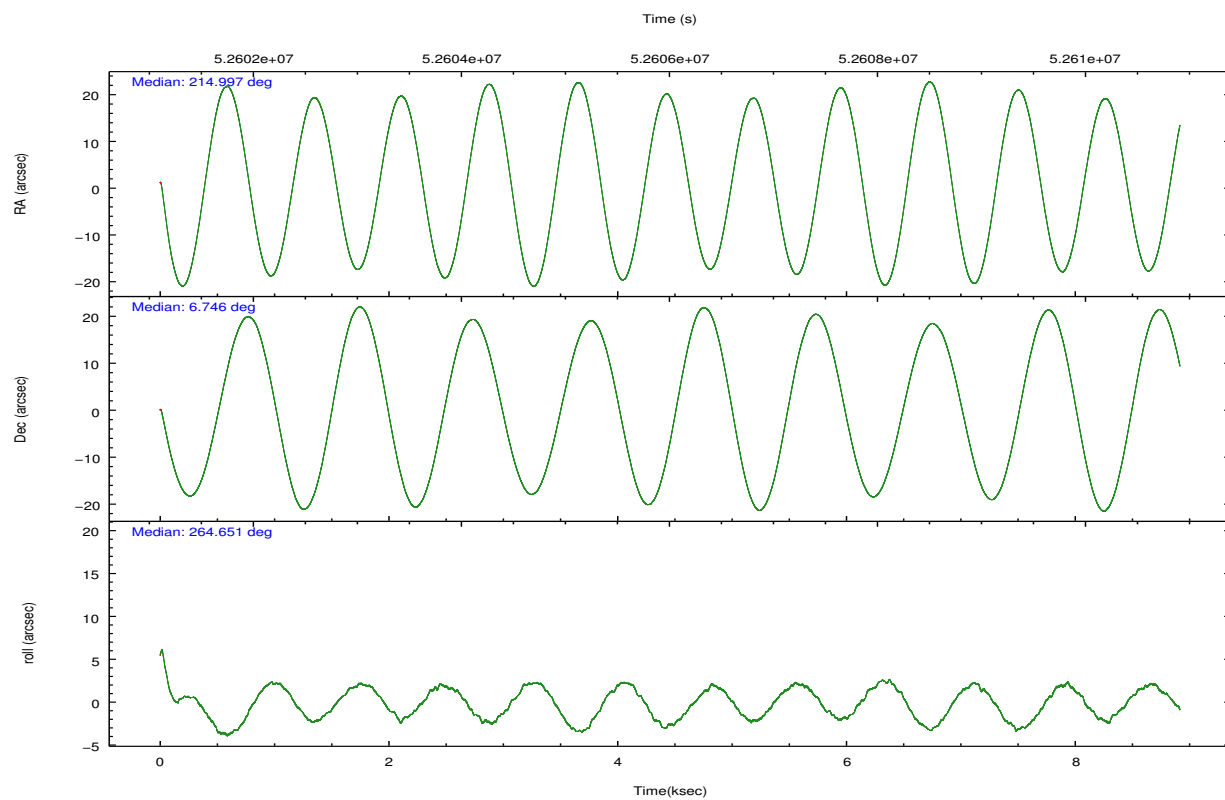
	segment 0
level 1 events	1050931
rejected events	3842
rejected %	0%

2.2 Compared Parameters

Parameter	Planned	Actual	Parameter	Planned	Actual
Instrument	HRC	HRC	Obspar format version number	6	6
Detector	HRC-I	HRC-I	Obspar file type	PREDICTED	ACTUAL
Grating	NONE	NONE	Obspar update status	NONE	UPDATED
Data mode	OBSERVING	OBSERVING			
Observation mode	POINTING	POINTING			
Pointing RA	214.986066	214.997436062008			
Pointing Dec	6.770682	6.745835353018716			
Pointing Roll	264.753703	264.6568639157955			
SIM focus pos (mm)	-1.040293	-1.300001029371461			
SIM defocus (mm)	0	-0.259708408712586			
SIM translation stage pos (mm)	126.985494	126.9829799899862			
SIM translation stage offset (mm)	0	0.002508901615314585			
Observation start time	52602031.184000	52601364.739848			
Observation start date	1999-09-01T19:39:27	1999-09-01T19:29:24			
Observation end time	52610031.184000	52611539.402714			
Observation end date	1999-09-01T21:52:47	1999-09-01T22:18:59			

2.3 Aspect



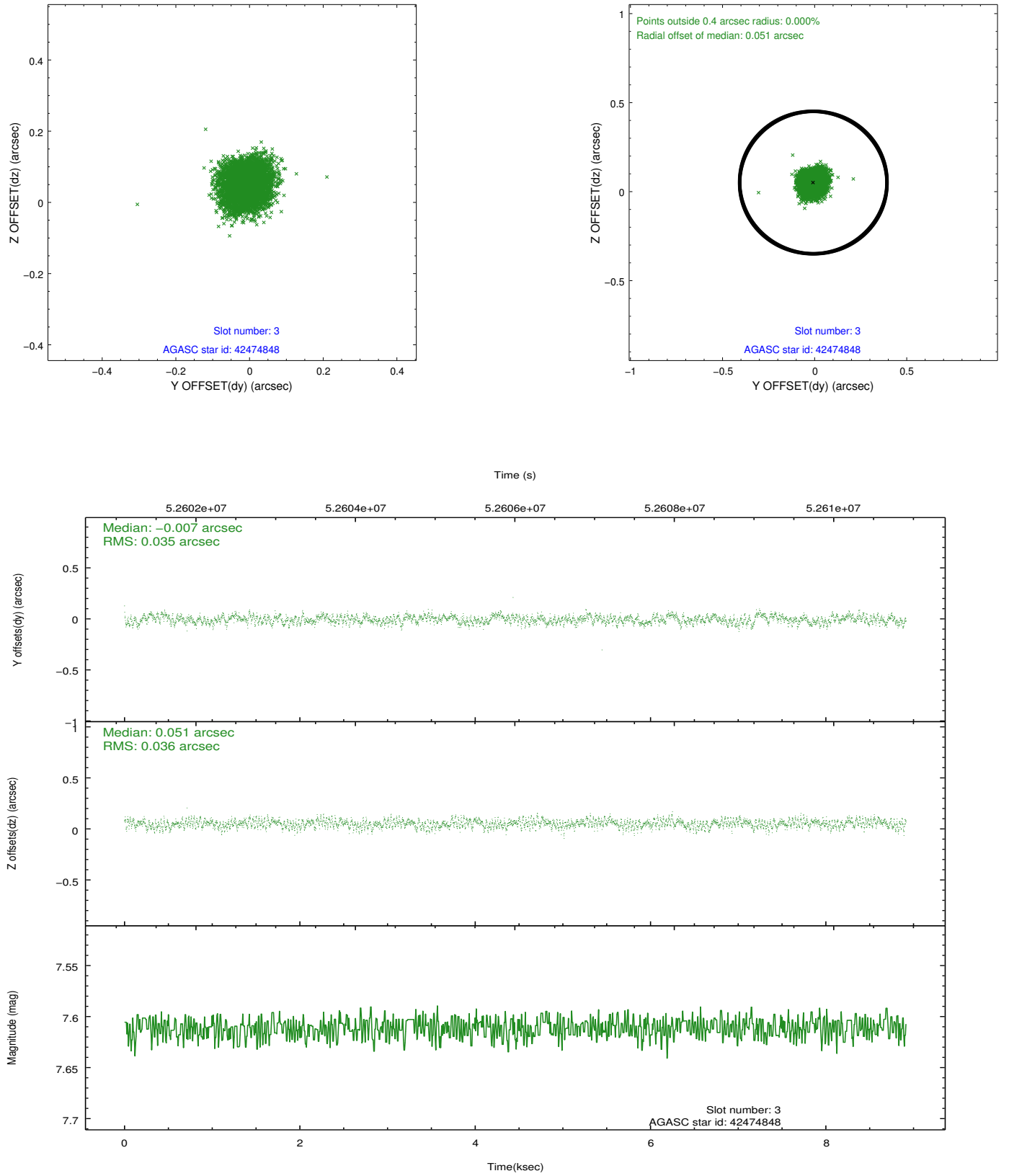


Slot Statistics

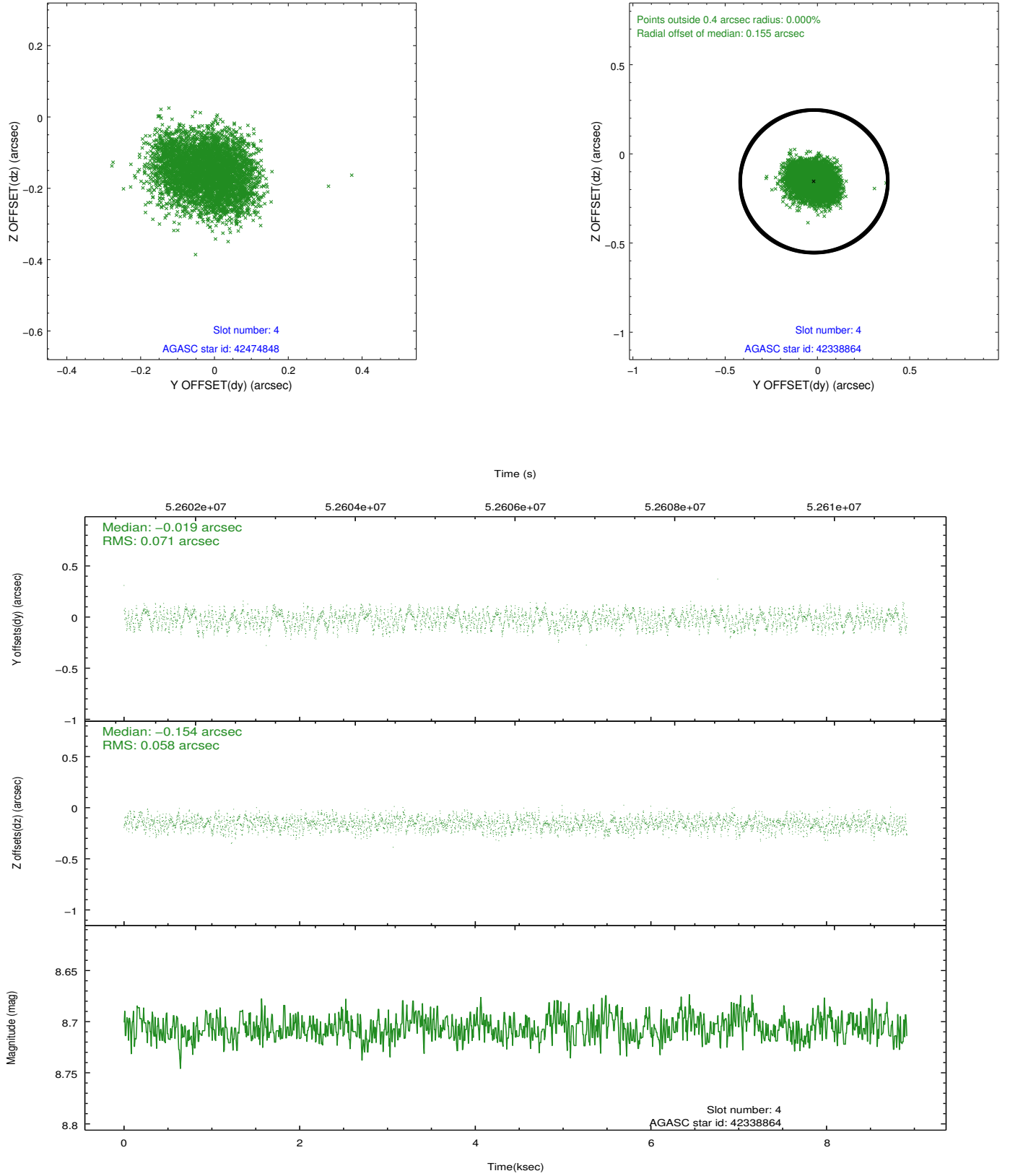
slot	status	id	mag	n_pts	med_dy	med_dz	dr1	dr2	ra	dec	mean_y	mean_z
0	FID	HRC-I-1	6.96	4350	-0.030	-0.098	0.006	0.010	0.000000	0.000000	-755.90	-1288.47
1	FID	HRC-I-3	7.05	4350	0.067	-0.036	0.006	0.010	0.000000	0.000000	-1184.58	1015.78
2	FID	HRC-I-4	6.99	4349	0.078	0.044	0.005	0.009	0.000000	0.000000	1286.54	1014.13
3	GUIDE	42474848	7.61	4350	-0.007	0.051	0.054	0.085	215.355097	6.442439	1054.98	1424.41
4	GUIDE	42338864	8.71	4349	-0.019	-0.154	0.100	0.150	214.291523	6.752765	289.62	-2465.05
5	GUIDE	42342360	8.83	4346	0.170	-0.028	0.081	0.121	214.659937	6.232653	2035.08	-983.97
6	GUIDE	42468232	8.99	4348	-0.044	0.014	0.096	0.150	215.593827	7.005458	-1041.79	2086.44
7	GUIDE	42472232	9.45	4347	-0.105	0.121	0.130	0.197	215.436891	7.380825	-2336.18	1403.95

2.4 Star Slots

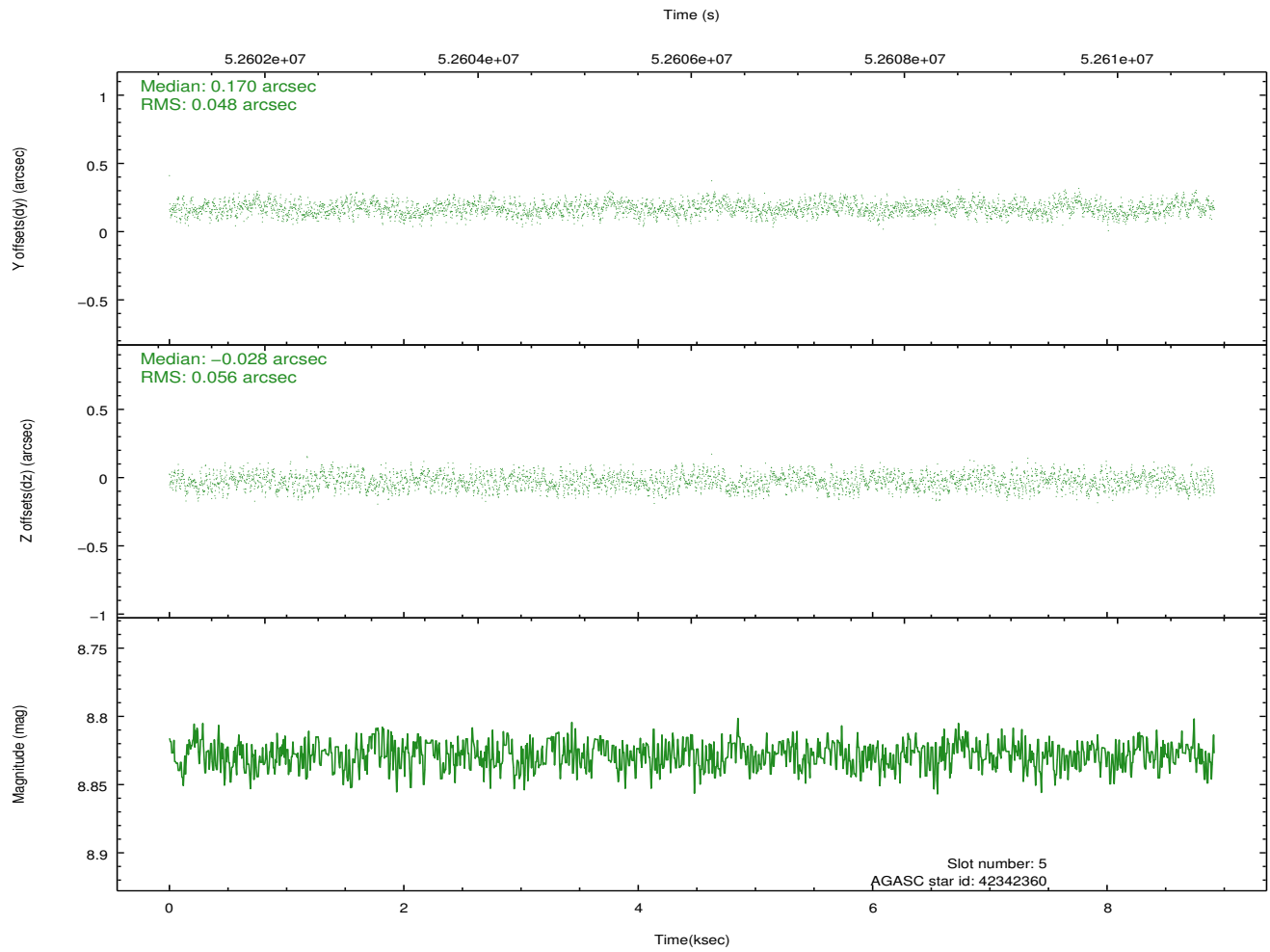
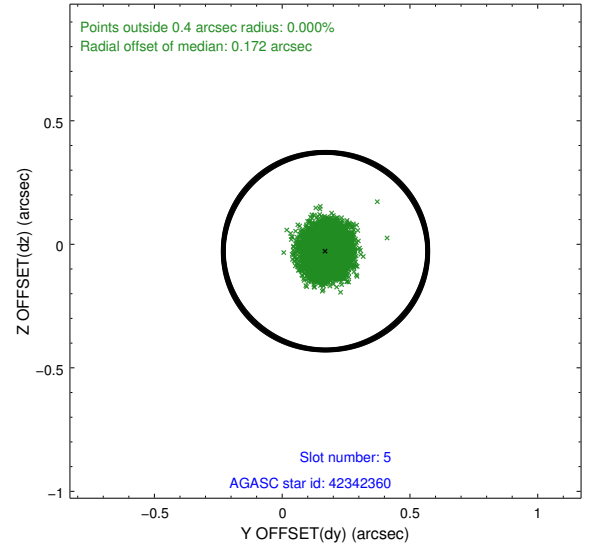
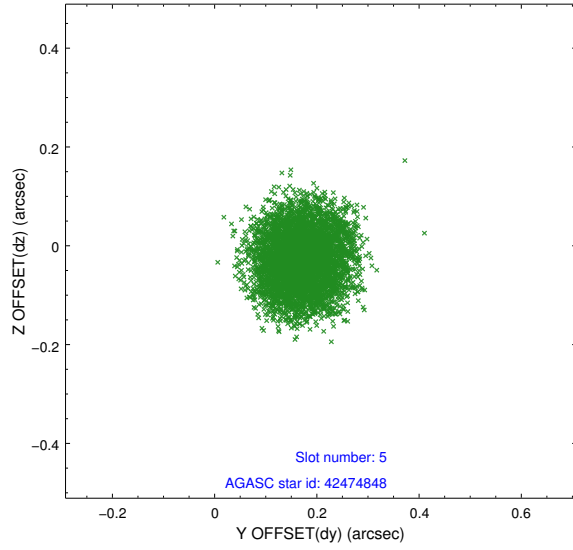
2.4.1 Slot 3



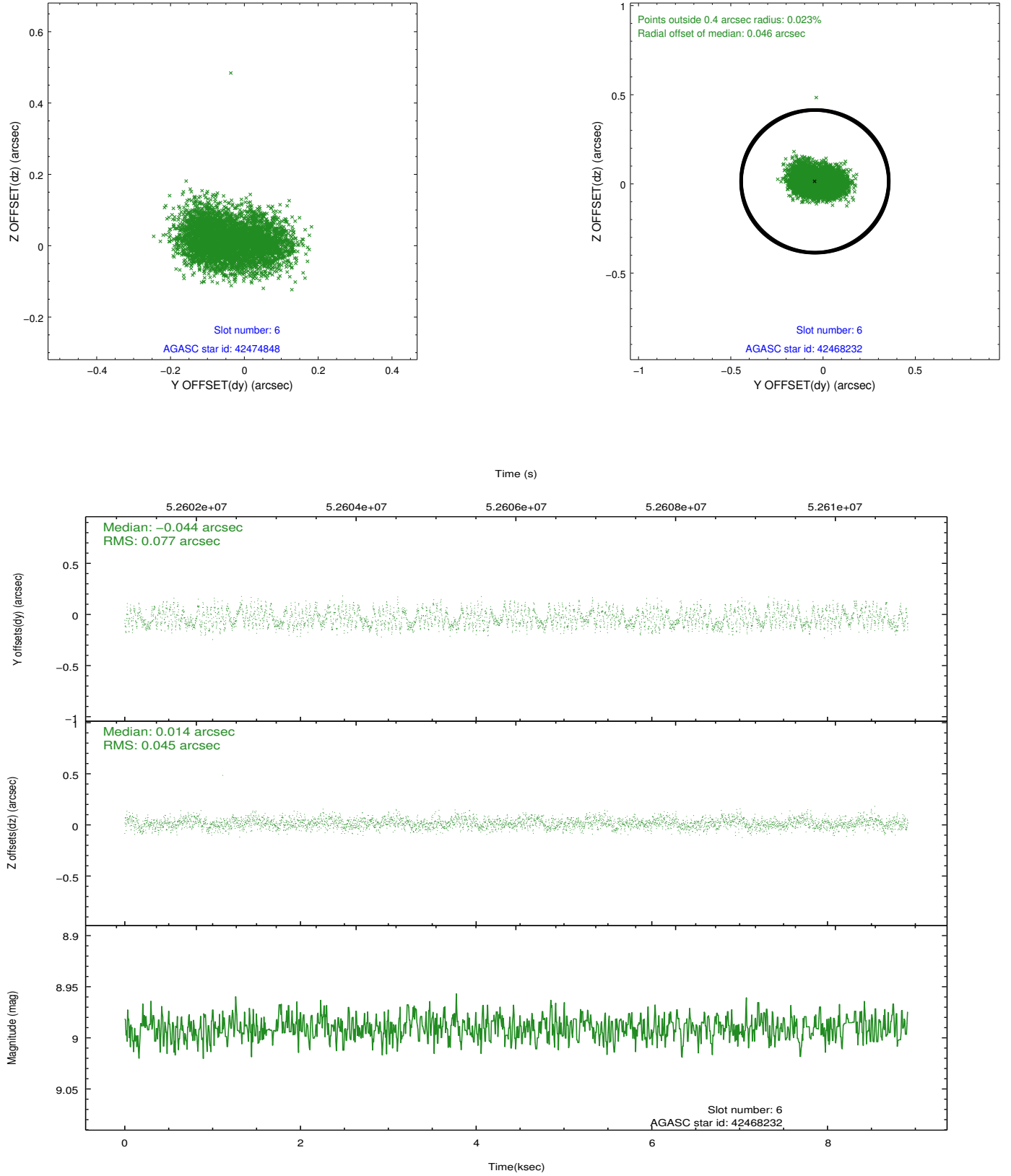
2.4.2 Slot 4



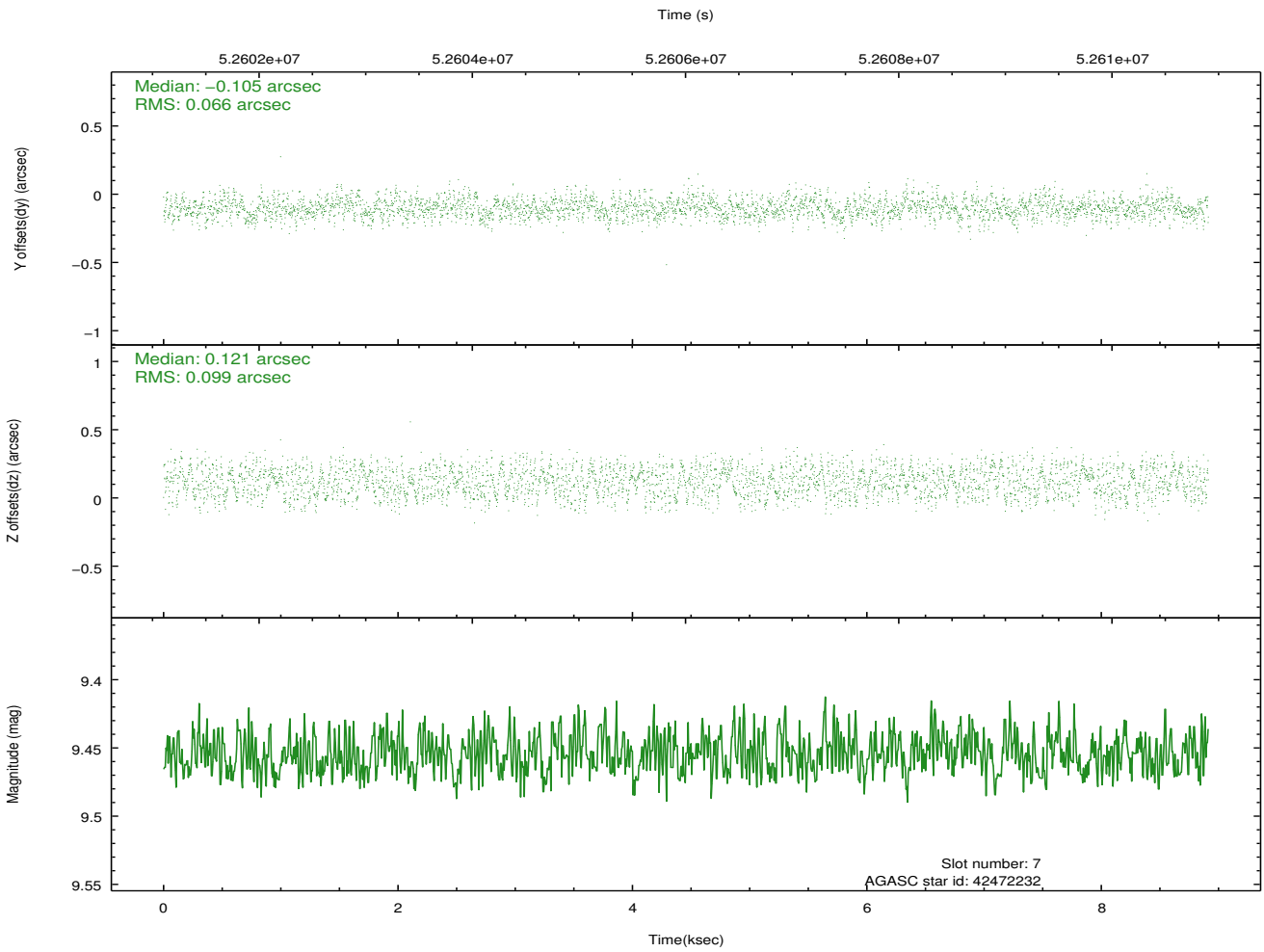
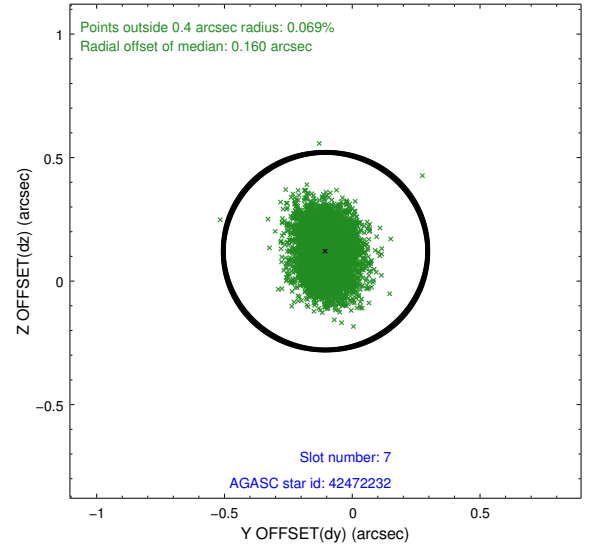
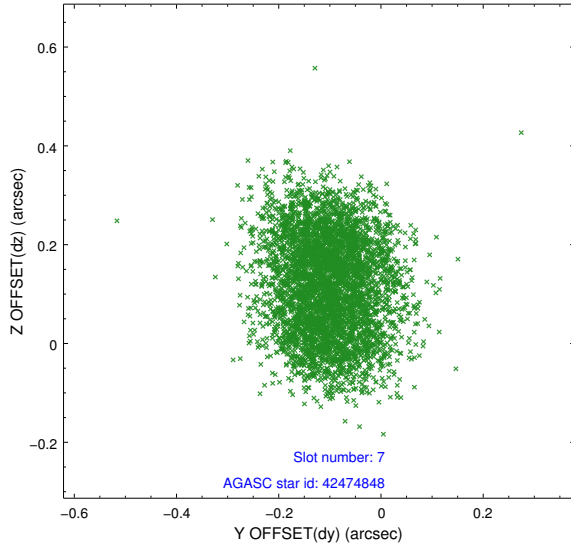
2.4.3 Slot 5



2.4.4 Slot 6

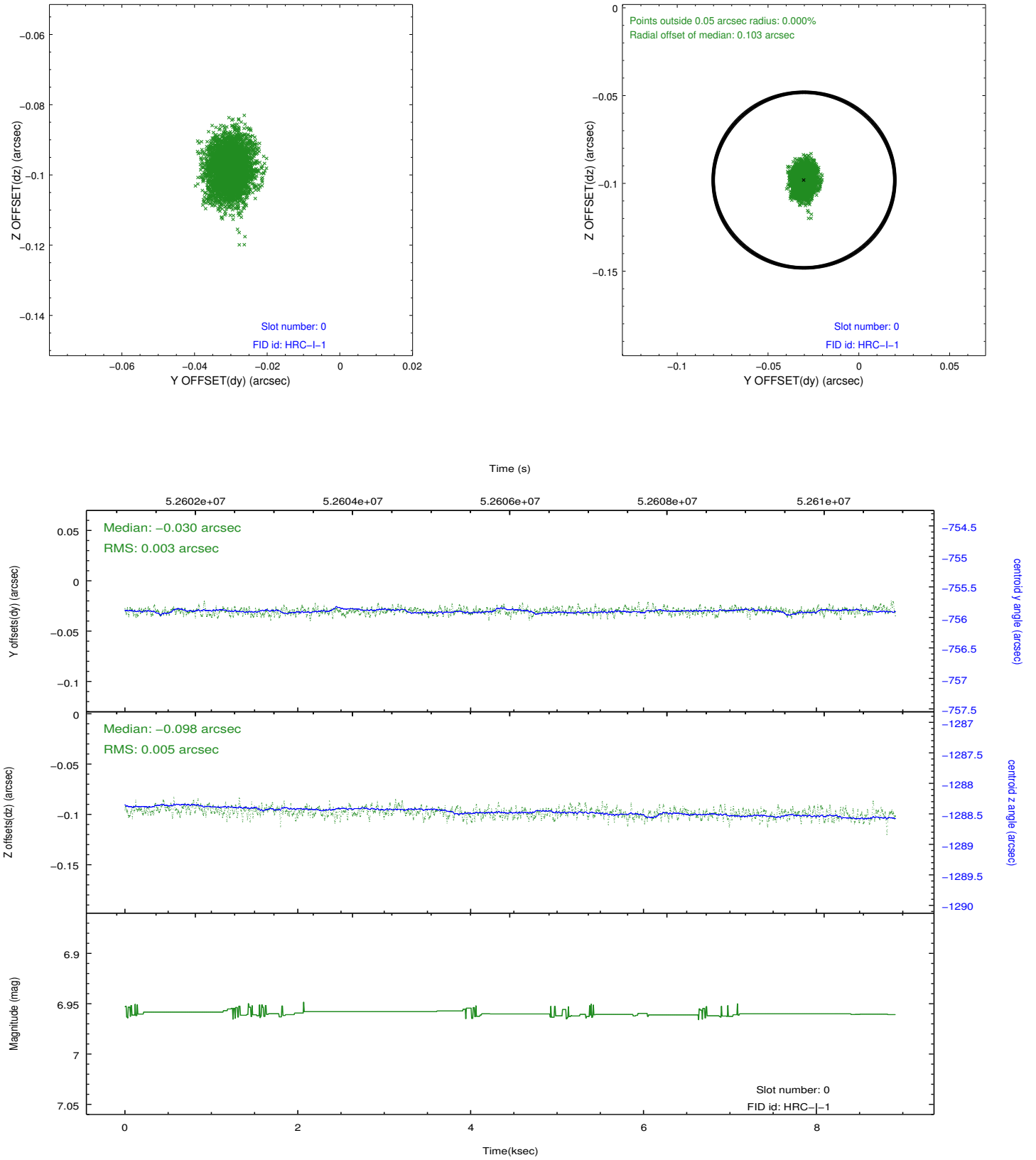


2.4.5 Slot 7

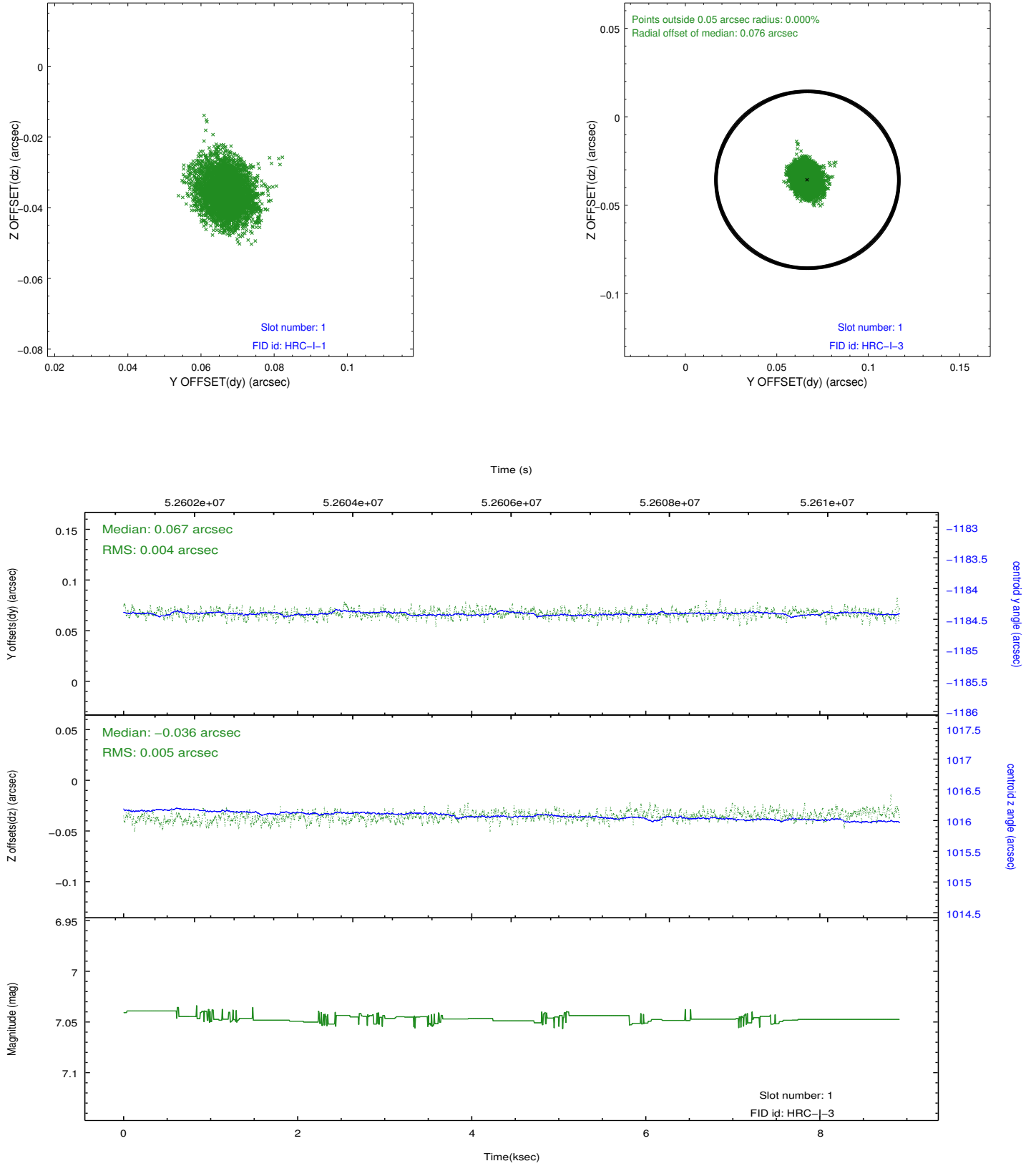


2.5 FID Slots

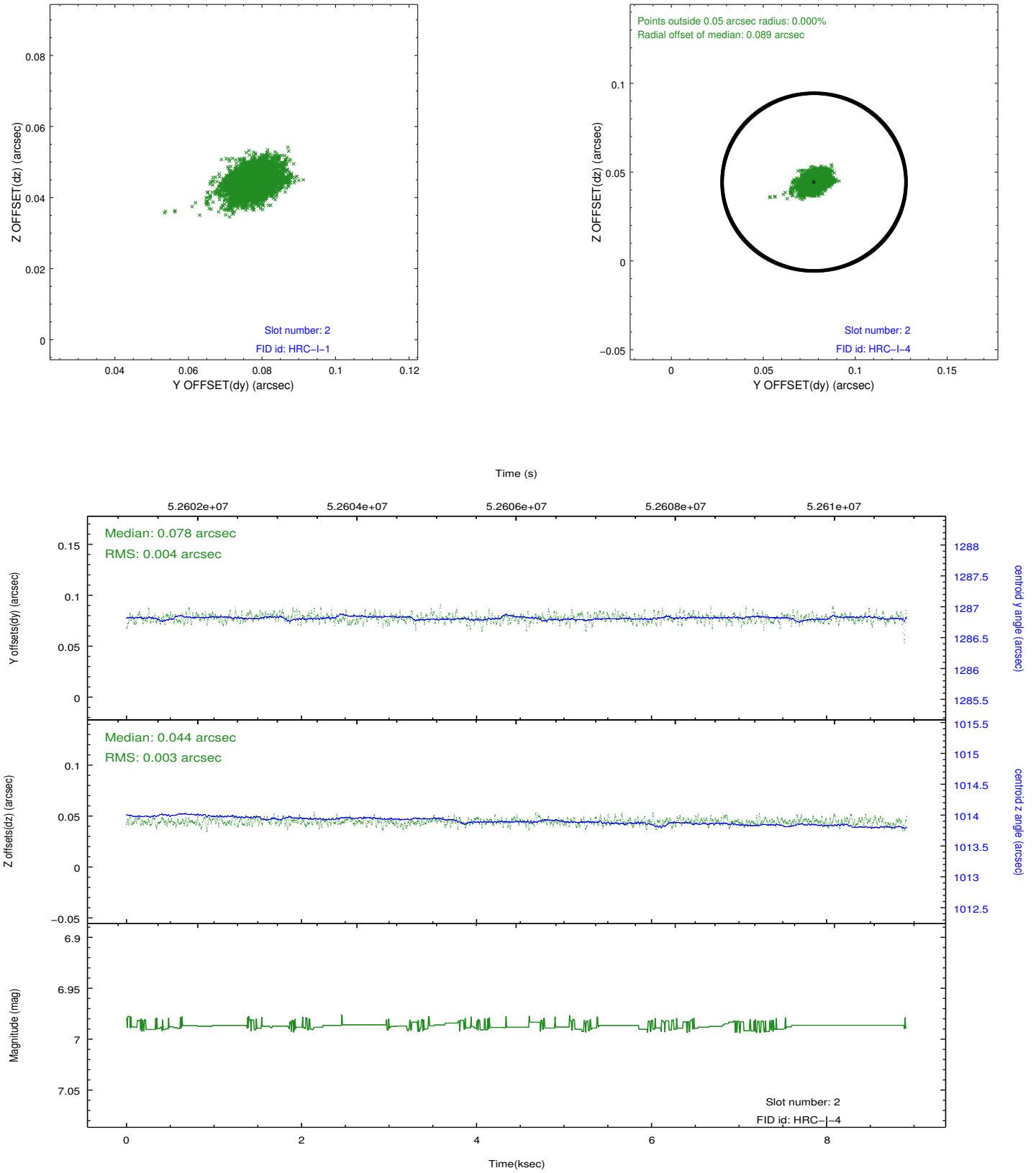
2.5.1 Slot 0



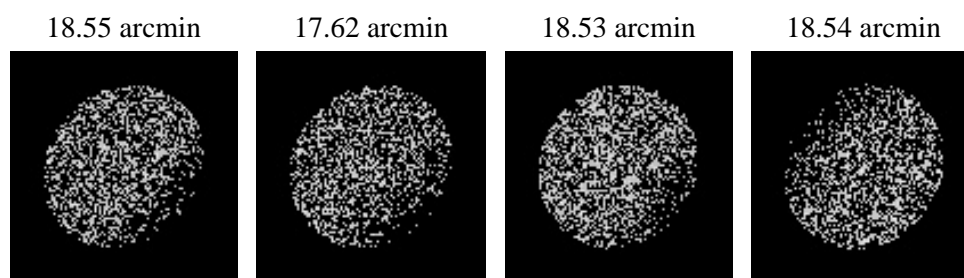
2.5.2 Slot 1



2.5.3 Slot 2



3 Point Sources



A Summary

A.1 Status

V&V Scientist	Joy Nichols
V&V Date (YYYY-MM-DD)	2010.01.21
V&V Edition	1
V&V Disposition and Status	OK
V&V Charge Time	8.225

A.2 Comments

Mosaic Bkgd test.