

V&V Reference Report

L2 ASCDS Version : 8.1.1

Observation 559 - L2 Version 4

Chandra X-Ray Center

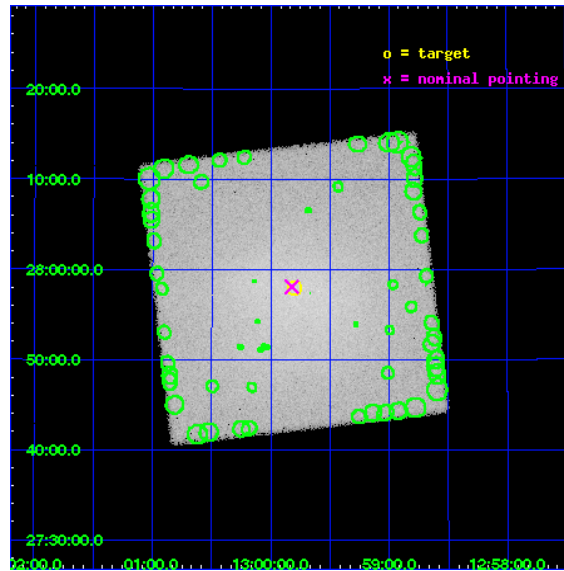
L2 Processing Date : Nov 21 2009

Contents

1	Front	2
2	OBI	3
2.1	OBI	3
2.1.1	Images	3
2.1.2	Parameters	4
2.1.3	Events	4
2.2	Compared Parameters	5
2.3	Aspect	6
2.4	Star Slots	9
2.4.1	Slot 3	9
2.4.2	Slot 4	10
2.4.3	Slot 5	11
2.4.4	Slot 6	12
2.5	FID Slots	13
2.5.1	Slot 0	13
2.5.2	Slot 1	14
2.5.3	Slot 2	15
3	Point Sources	16
A	Summary	17
A.1	Status	17
A.2	Comments	17

1 Front

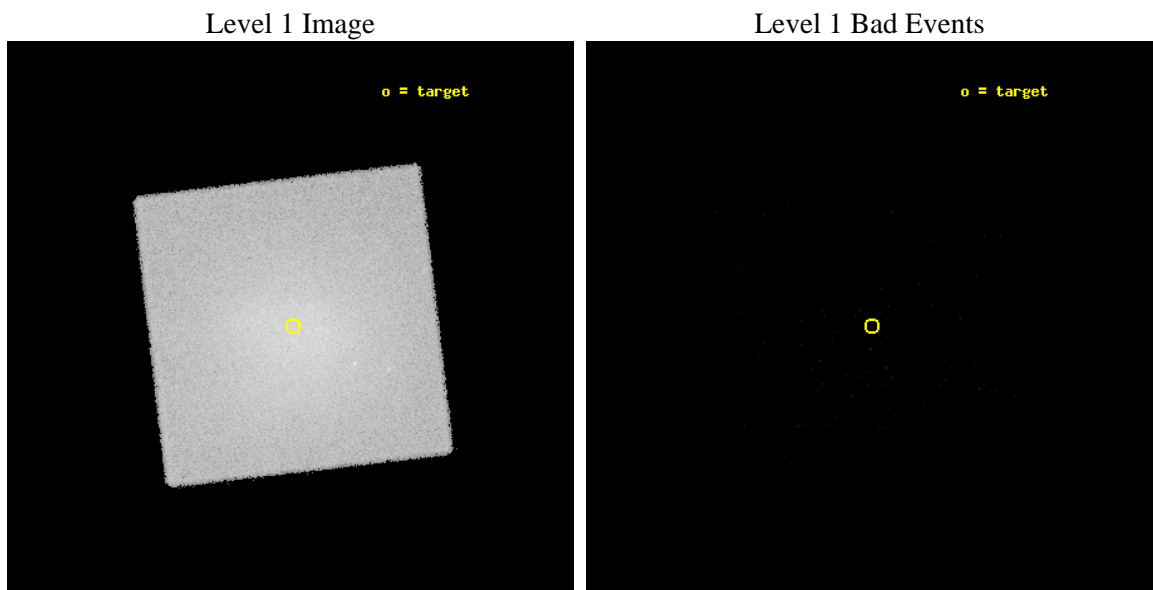
seq_num	890004	Sequence number
obs_id	559	Observation id
title	CALIBRATION OBSERVATION OF AN EXTENDED HARD SOURCE: THE COMA CLUSTER	
observer	Dr. CXC Calibration	Principal investigator
object	COMA CLUSTER	Source name
ra_targ	194.95	Observer's specified target RA
dec_targ	27.966667	Observer's specified target Dec
ra_nom	194.95538660485	Nominal RA
dec_nom	27.967943575648	Nominal Dec
roll_nom	38.31304799545	Nominal Roll
revision	4	Processing version of data
ontime	10165.181617193	[s]
livetime	10091.644790757	Ontime multiplied by DTCOR
l2events	462766	Number of level 2 events



2 OBI

2.1 OBI

2.1.1 Images



2.1.2 Parameters

obi_num	0	Obi number	sched_exp_time	10000.000000	Scheduled observation exposure time
ascdsver	8.1.1	Processing system revision	ontime	10165.181617193	[s]
caldbver	4.1.4	 	ll events	629693	Number of level 1 events
date	2009-11-21T12:36:50	Date and time of file creation			
revision	4	Processing version of data			

2.1.3 Events

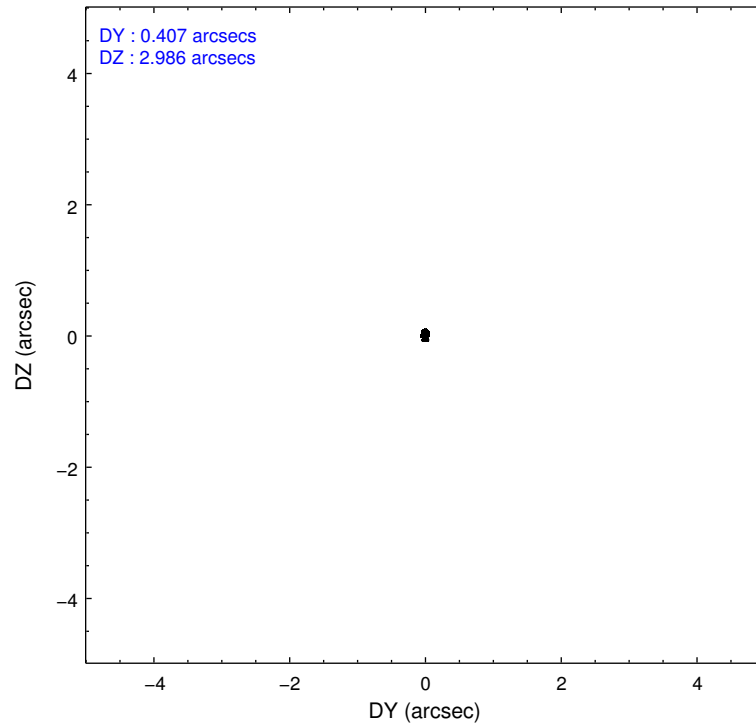
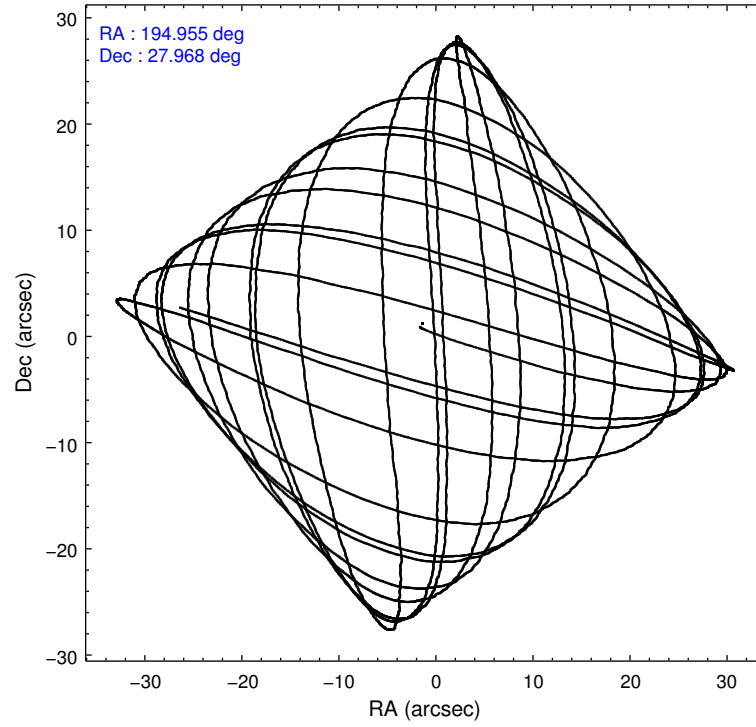
Level 1 Events

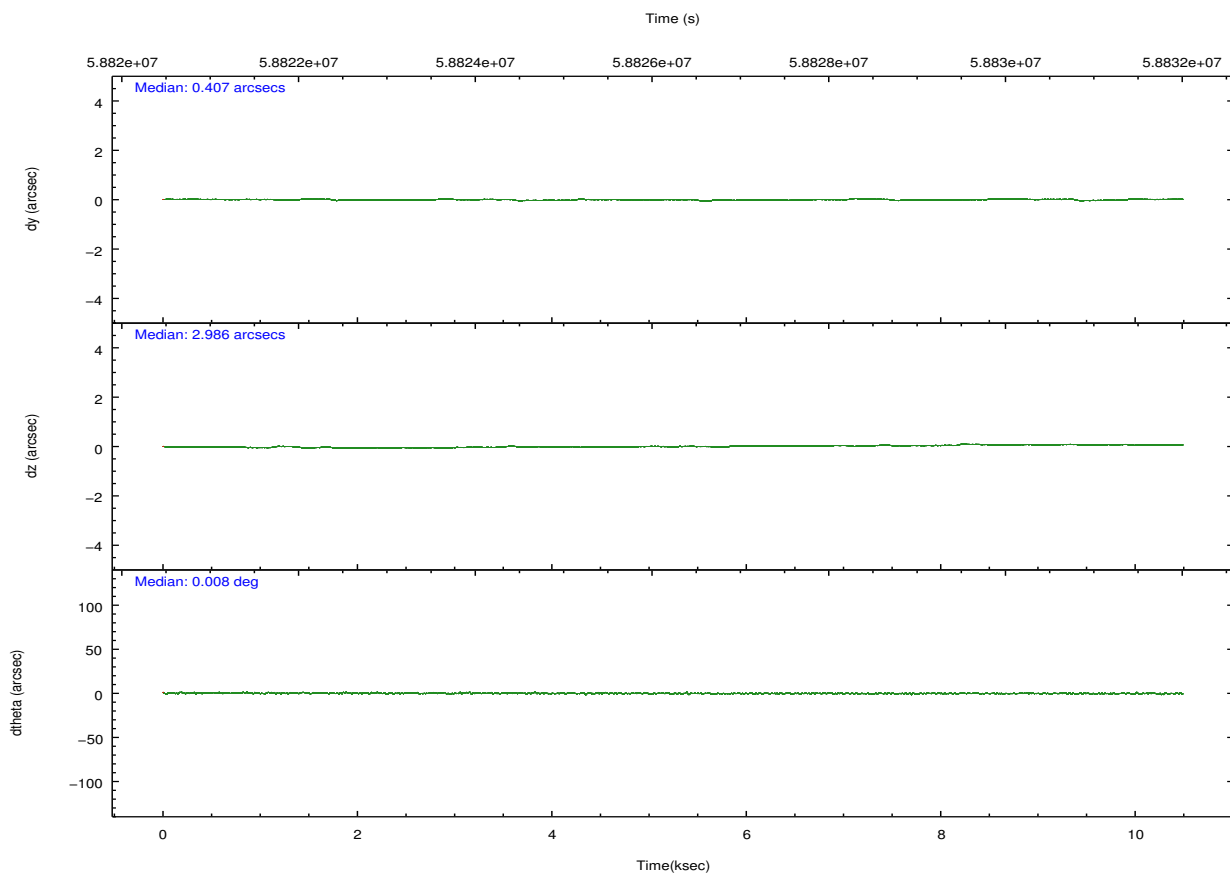
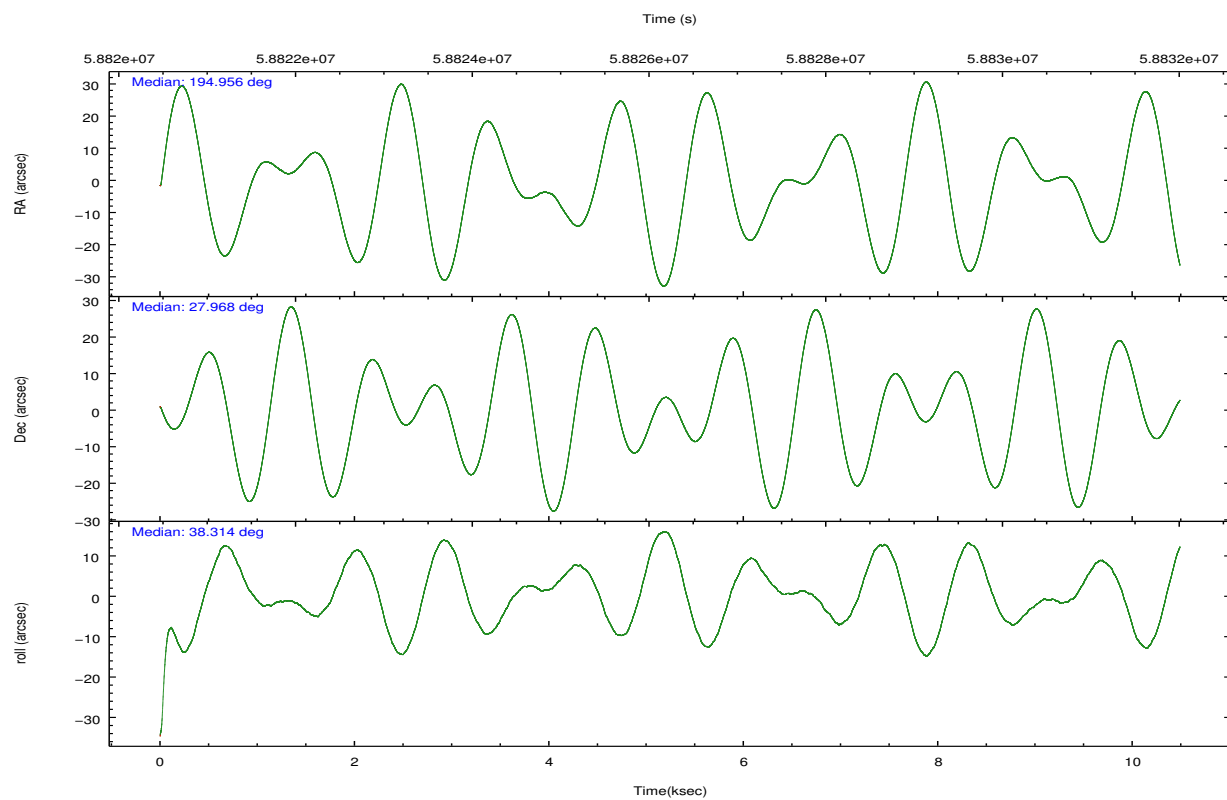
	segment 0
level 1 events	629693
rejected events	2876
rejected %	0%

2.2 Compared Parameters

Parameter	Planned	Actual	Parameter	Planned	Actual
Instrument	HRC	HRC	Obspar format version number	6	6
Detector	HRC-I	HRC-I	Obspar file type	PREDICTED	ACTUAL
Grating	NONE	NONE	Obspar update status	NONE	UPDATED
Data mode	OBSERVING	OBSERVING			
Observation mode	POINTING	POINTING			
Pointing RA	194.943866	194.9553866048535			
Pointing Dec	27.942381	27.96794357564787			
Pointing Roll	38.413984	38.31304799544952			
SIM focus pos (mm)	-1.040293	-1.038866356238299			
SIM defocus (mm)	0	0.001426264420575141			
SIM translation stage pos (mm)	126.985494	126.9854943052878			
SIM translation stage offset (mm)	0	-5.413686238853188e-06			
Observation start time	58821484.184000	58820716.98157			
Observation start date	1999-11-12T19:17:00	1999-11-12T19:05:16			
Observation end time	58831484.184000	58831617.856963			
Observation end date	1999-11-12T22:03:40	1999-11-12T22:06:57			

2.3 Aspect



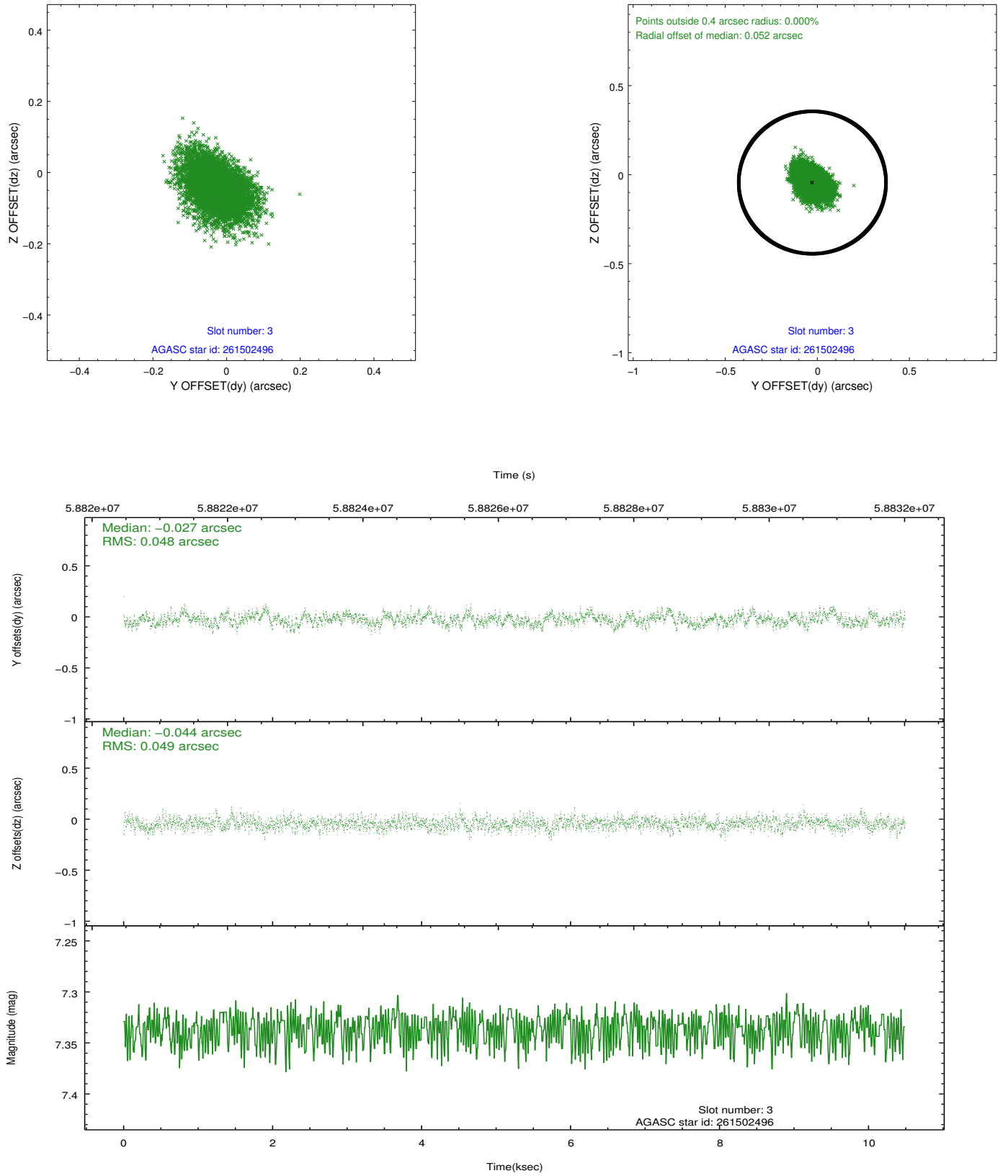


Slot Statistics

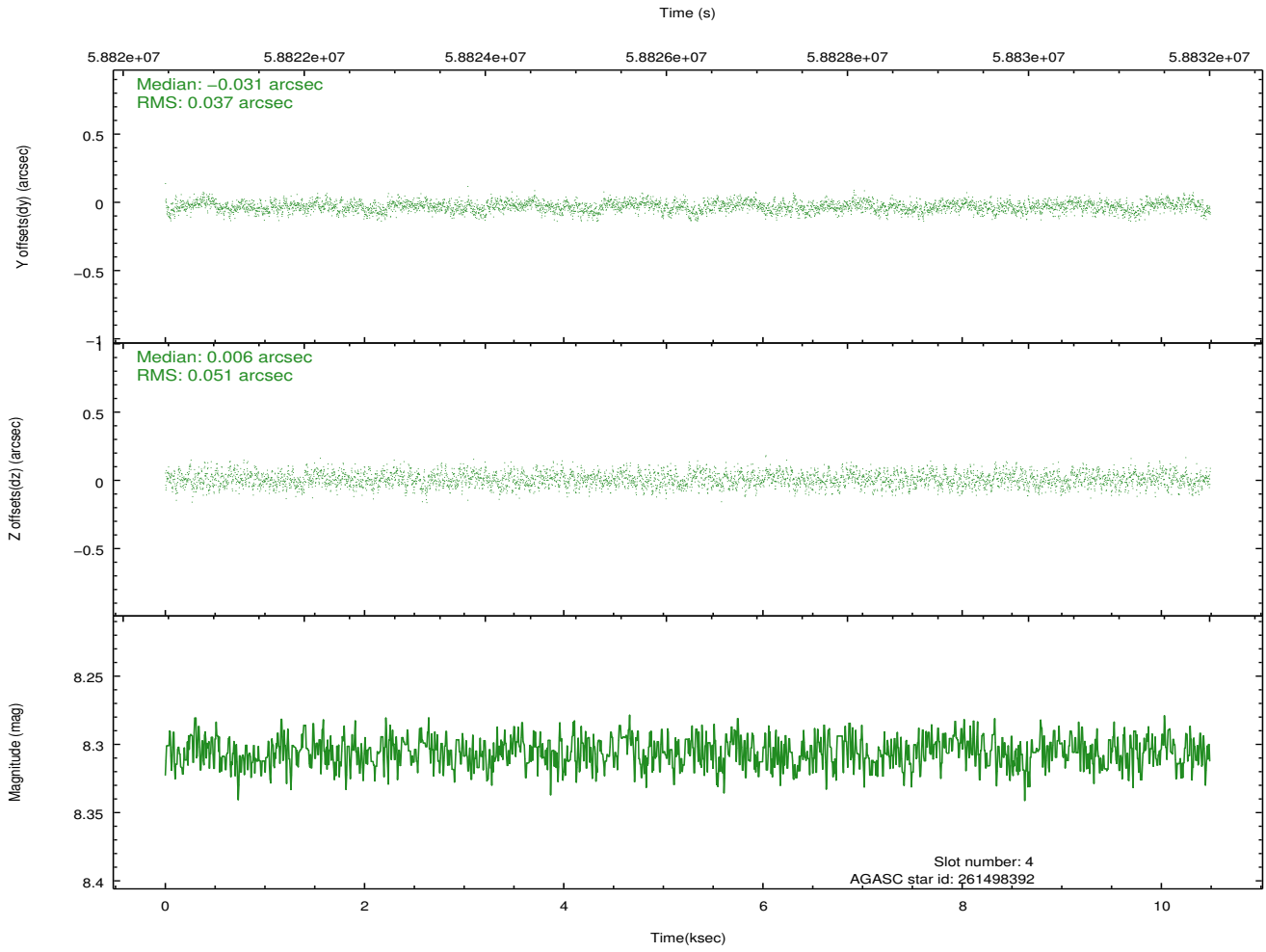
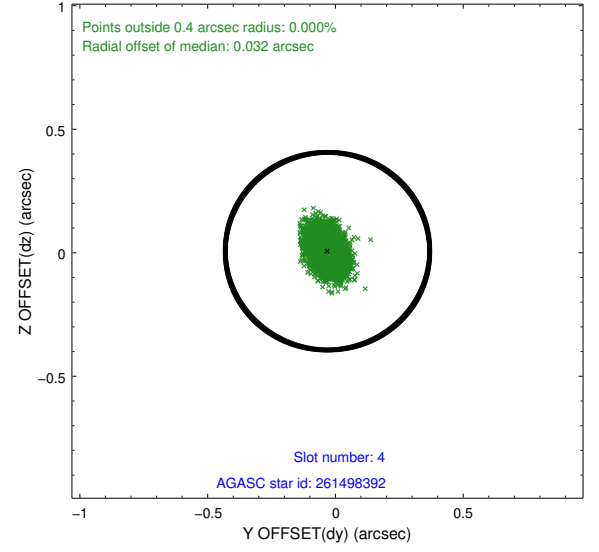
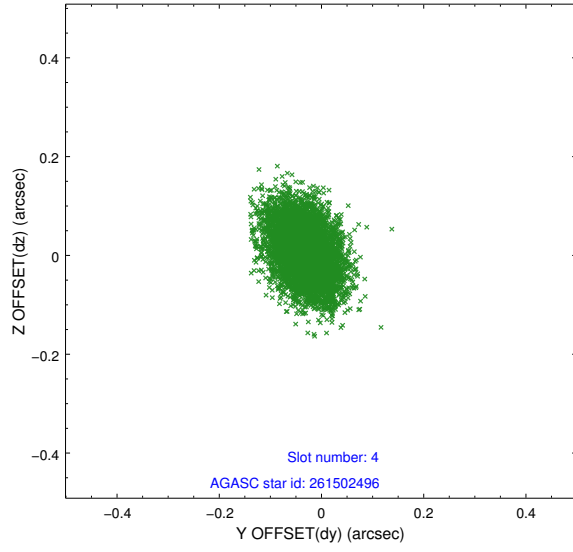
slot	status	id	mag	n_pts	med_dy	med_dz	dr1	dr2	ra	dec	mean_y	mean_z
0	FID	HRC-I-1	6.96	5118	0.058	-0.020	0.005	0.009	0.000000	0.000000	-755.74	-1290.80
1	FID	HRC-I-3	7.04	5118	0.035	-0.018	0.006	0.010	0.000000	0.000000	-1184.41	1013.51
2	FID	HRC-I-4	6.99	5118	0.021	-0.051	0.005	0.008	0.000000	0.000000	1286.77	1011.55
3	GUIDE	261502496	7.34	5118	-0.027	-0.044	0.072	0.121	194.887297	28.065668	134.75	459.89
4	GUIDE	261498392	8.31	5118	-0.031	0.006	0.067	0.110	194.888587	28.238913	525.73	945.98
5	GUIDE	261492080	9.29	5117	-0.112	0.002	0.089	0.142	194.976344	28.631585	1621.90	1881.00
6	GUIDE	261505232	9.79	5116	0.170	0.036	0.127	0.206	194.216553	27.802521	-2123.03	1050.93
7	UNUSED		0.00	0	0.000	0.000	0.000	0.000	0.000000	0.000000	0.00	0.00

2.4 Star Slots

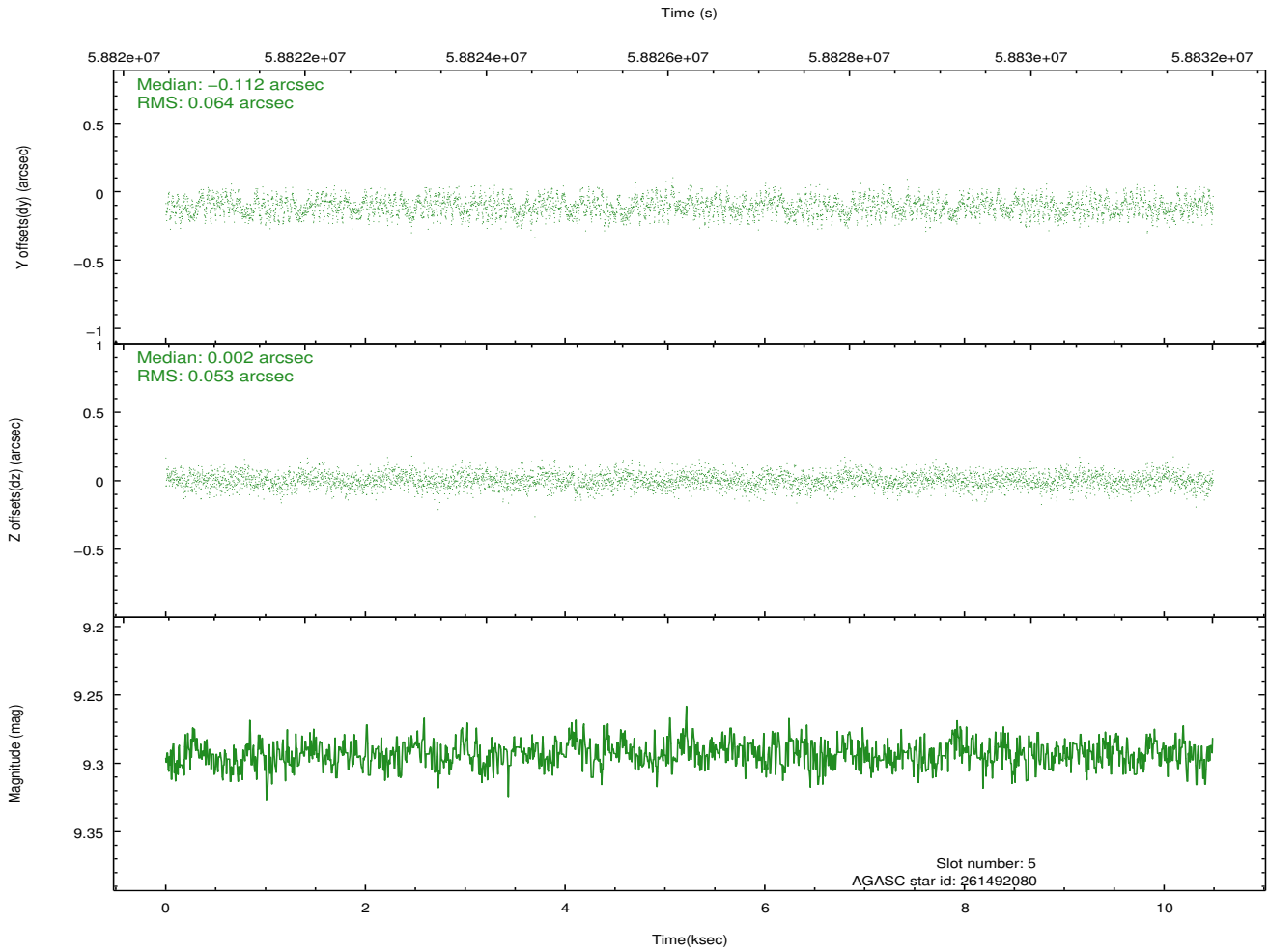
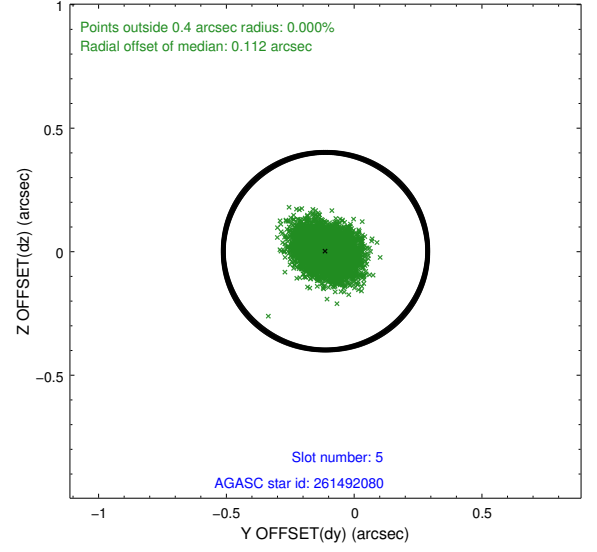
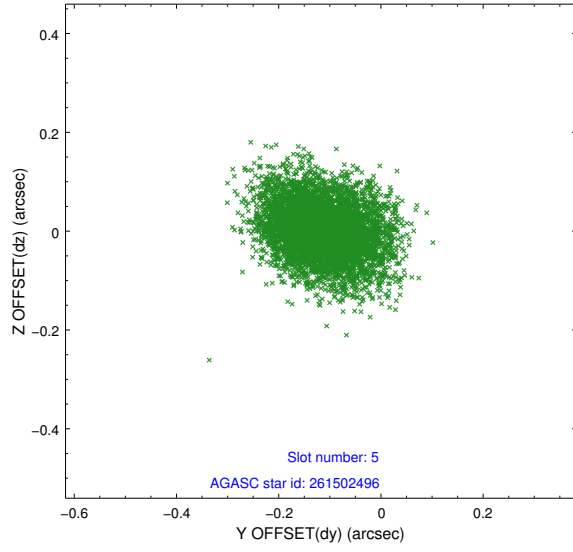
2.4.1 Slot 3



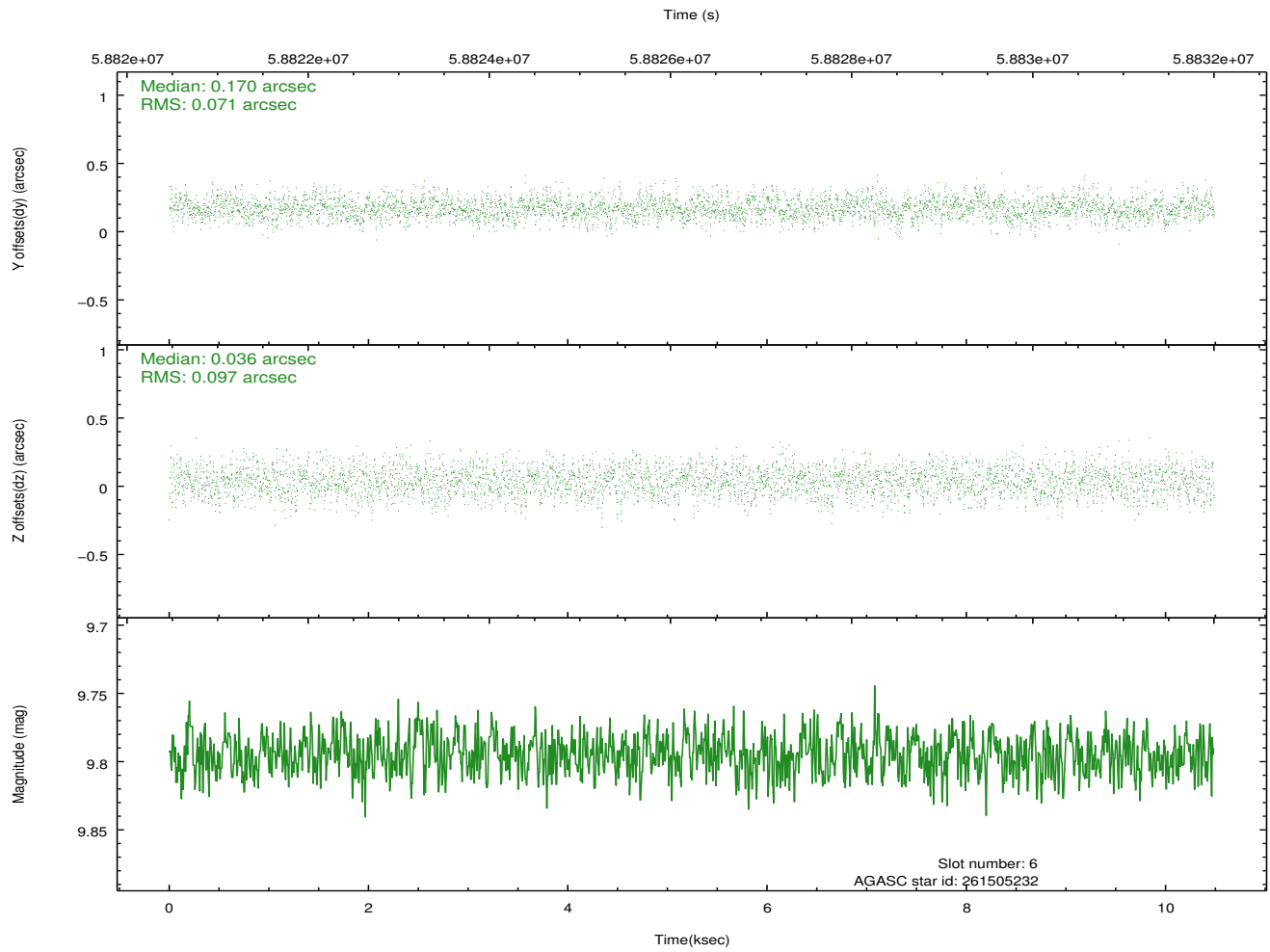
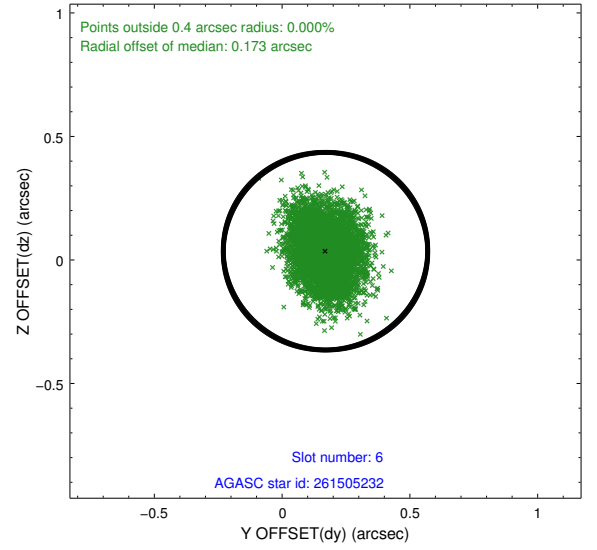
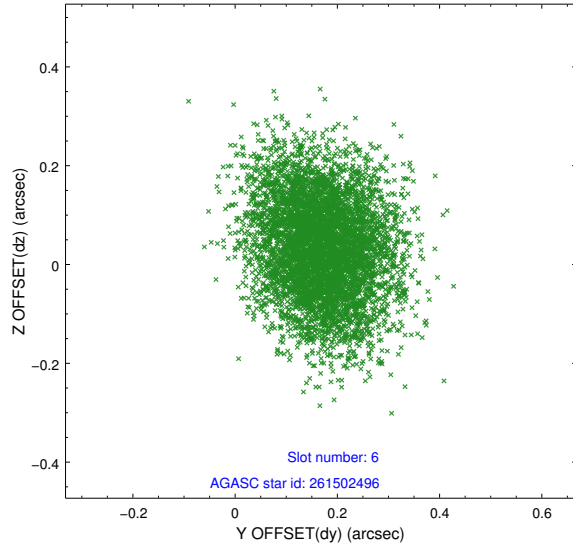
2.4.2 Slot 4



2.4.3 Slot 5

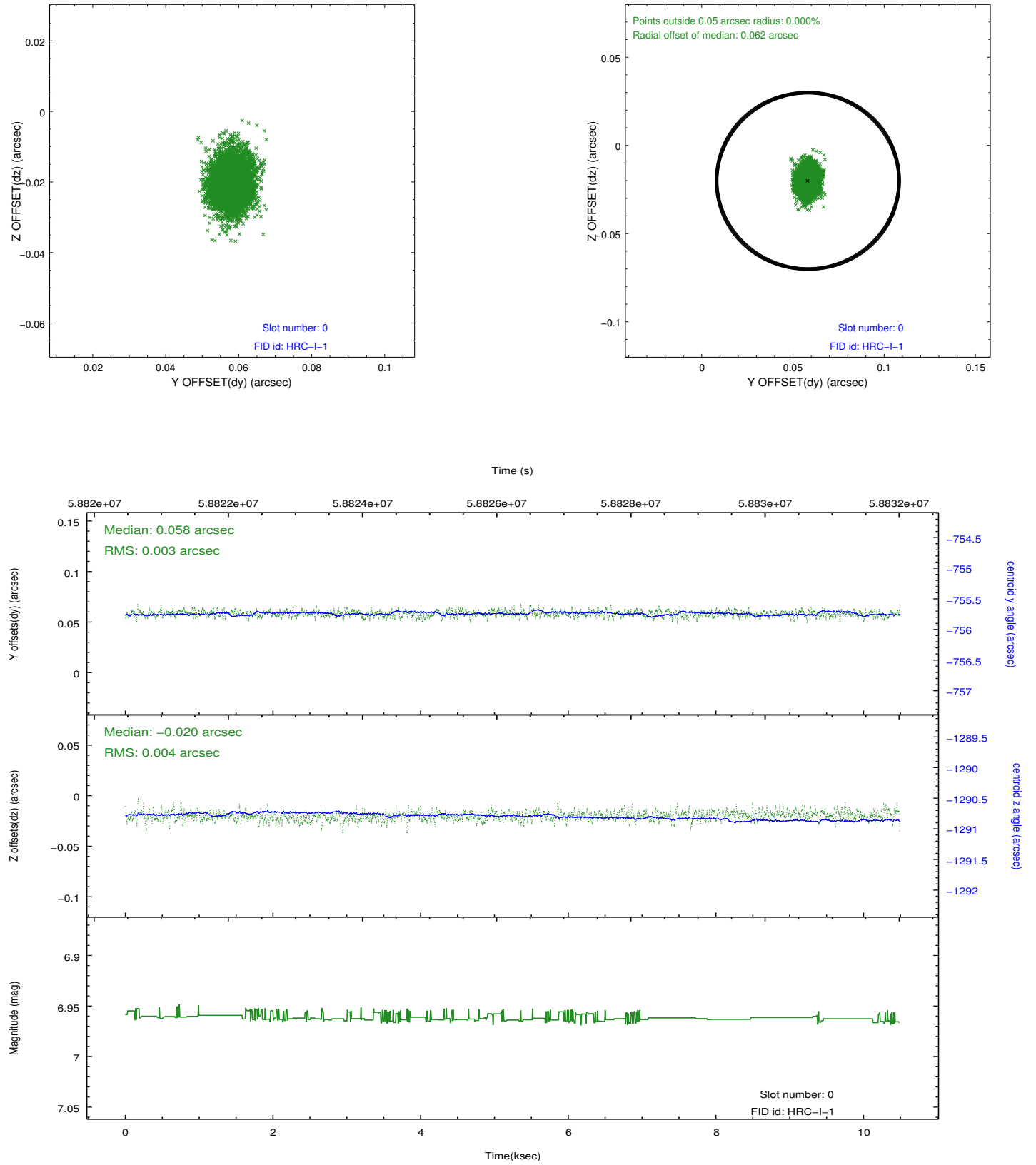


2.4.4 Slot 6

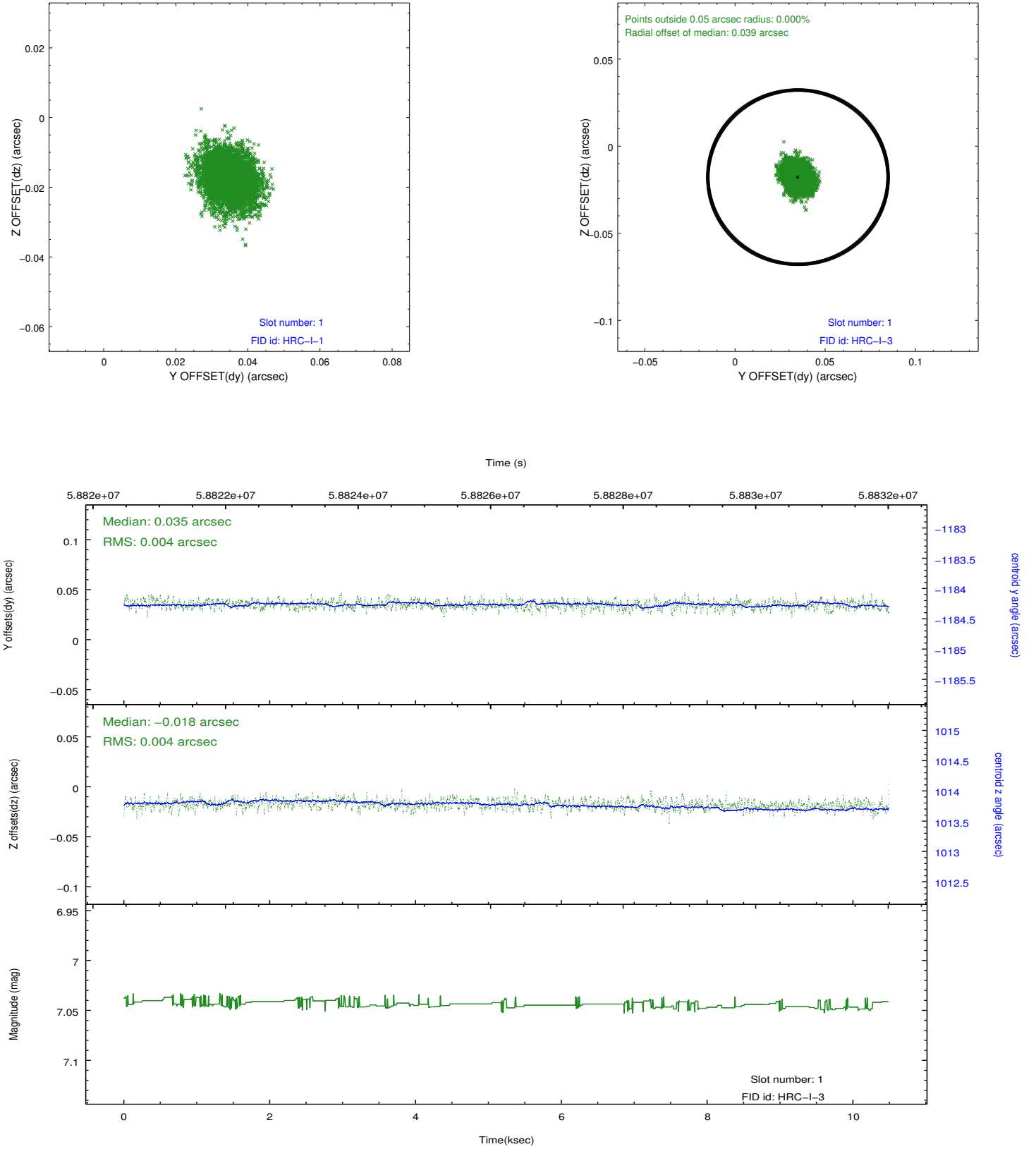


2.5 FID Slots

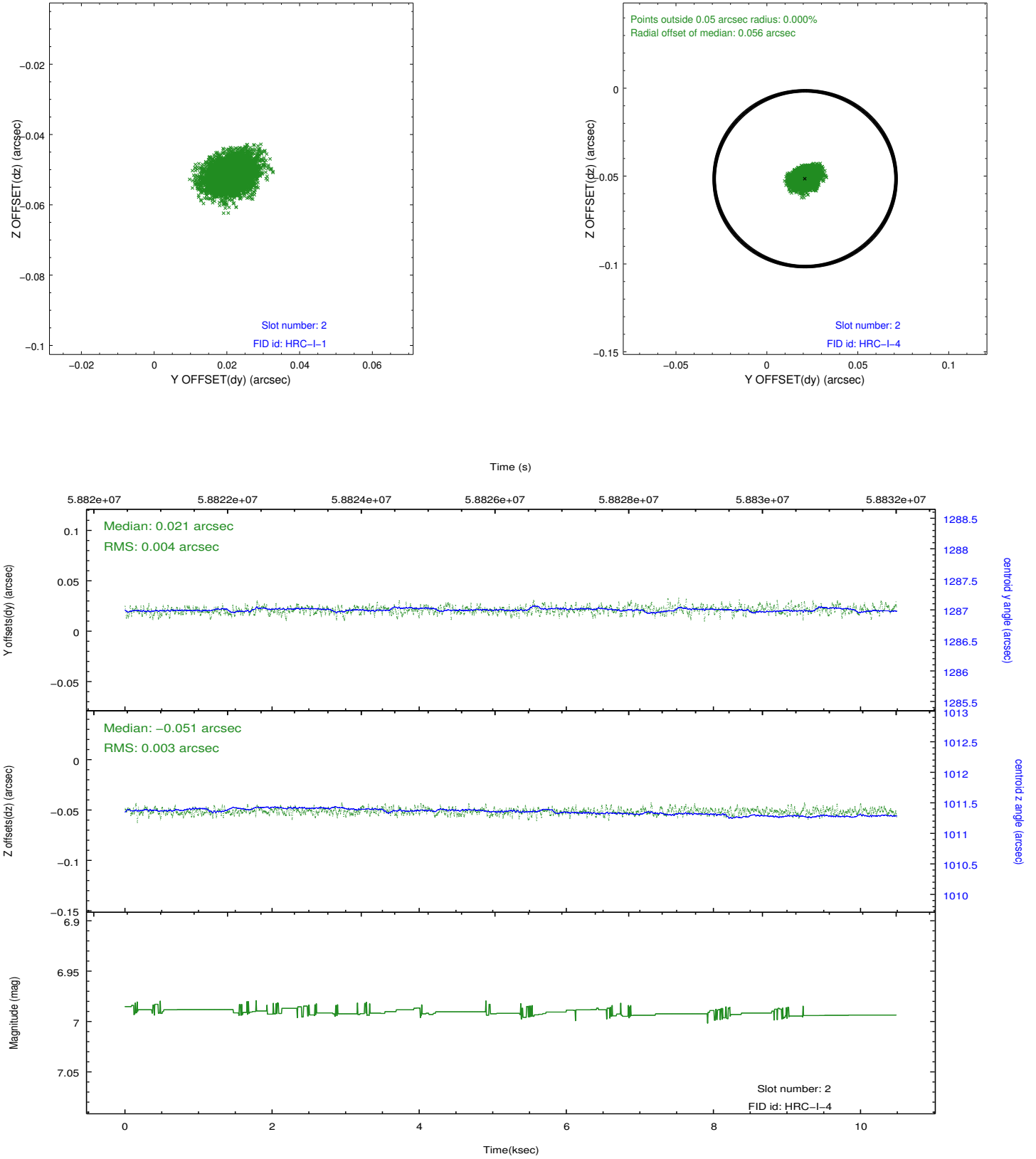
2.5.1 Slot 0



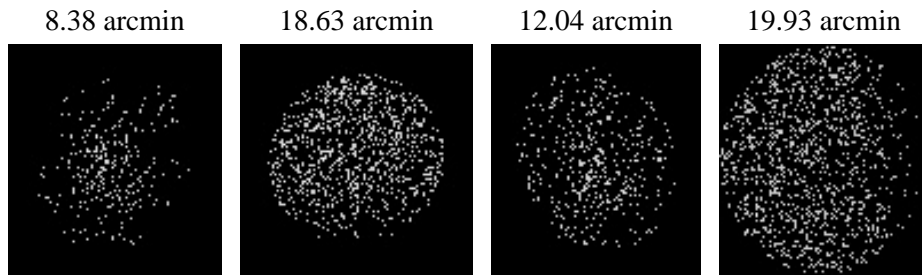
2.5.2 Slot 1



2.5.3 Slot 2



3 Point Sources



A Summary

A.1 Status

V&V Scientist	Beth Sundheim
V&V Date (YYYY-MM-DD)	2009.11.23
V&V Edition	1
V&V Disposition and Status	OK
V&V Charge Time	10.161

A.2 Comments

Slot 7 was not utilized in this observation.