

# V&V Reference Report

## L2 ASCDS Version : 8.1.2

Observation 1276 - L2 Version 3

Chandra X-Ray Center

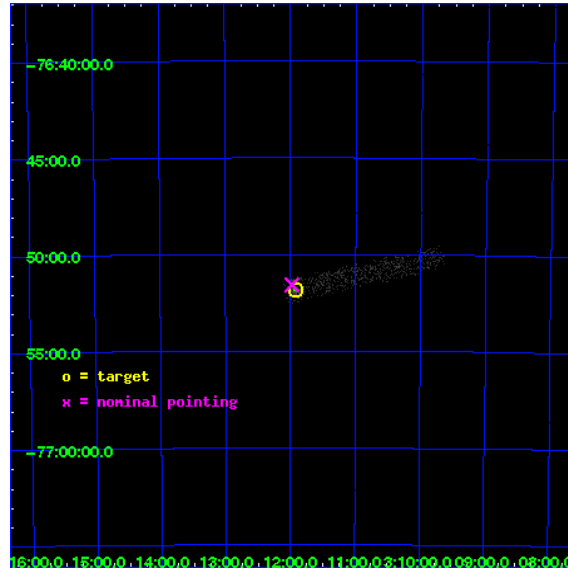
L2 Processing Date : Dec 17 2009

## Contents

<b>1</b>	<b>Front</b>	<b>2</b>
<b>2</b>	<b>OBI</b>	<b>3</b>
2.1	OBI . . . . .	3
2.1.1	Images . . . . .	3
2.1.2	Bias . . . . .	3
2.1.3	Parameters . . . . .	4
2.1.4	Events . . . . .	4
2.2	Compared Parameters . . . . .	5
2.3	Aspect . . . . .	6
2.4	Star Slots . . . . .	9
2.4.1	Slot 3 . . . . .	9
2.4.2	Slot 5 . . . . .	10
2.4.3	Slot 6 . . . . .	11
2.4.4	Slot 7 . . . . .	12
2.5	FID Slots . . . . .	13
2.5.1	Slot 0 . . . . .	13
2.5.2	Slot 1 . . . . .	14
2.5.3	Slot 2 . . . . .	15
<b>3</b>	<b>Point Sources</b>	<b>16</b>
<b>A</b>	<b>Summary</b>	<b>17</b>
A.1	Status . . . . .	17
A.2	Comments . . . . .	17

# 1 Front

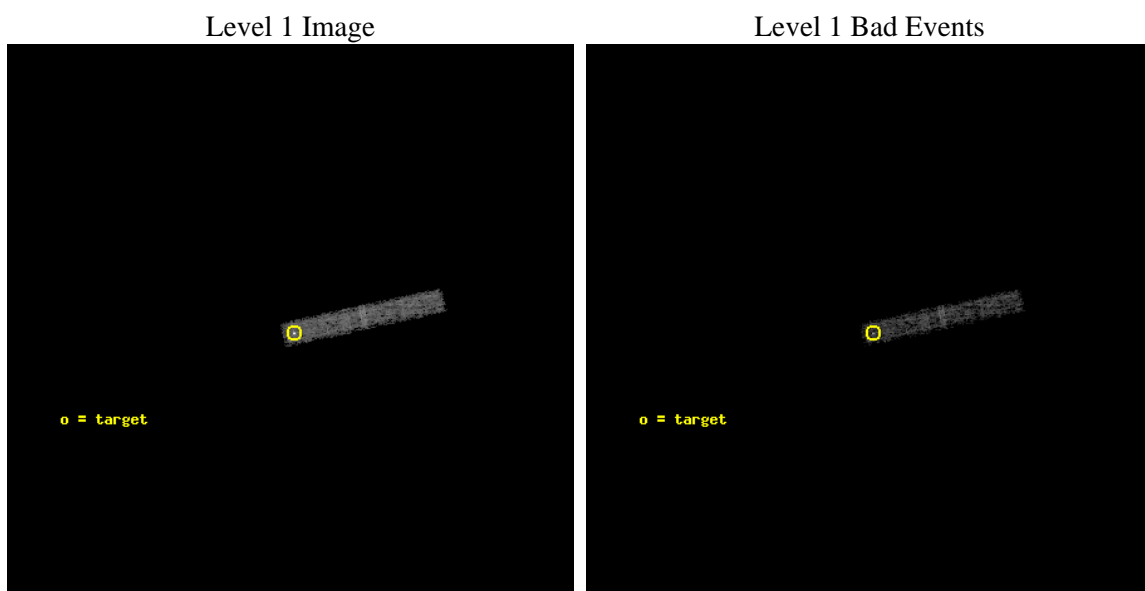
seq_num	780226	Sequence number
obs_id	1276	Observation id
title	Bias observation	Proposal title
observer	Dr. CXC Calibration	Principal investigator
object	PKS0312-770	Source name
dtcycle	0	&#160
cycle	P	events from which exps? Prim/Second/Both
ra_targ	47.98	Observer's specified target RA
dec_targ	-76.864167	Observer's specified target Dec
ra_nom	47.995080368537	Nominal RA
dec_nom	-76.859529847497	Nominal Dec
roll_nom	77.797262049889	Nominal Roll
revision	3	Processing version of data
ontime	5894.7850451097	Sum of GTIs [s]
livetime	5447.6425450149	Livetime [s]
ontime3	5894.7850451097	Sum of GTIs [s]
l2events	4470	Number of level 2 events



## 2 OBI

### 2.1 OBI

#### 2.1.1 Images



#### 2.1.2 Bias

Chip 3



### 2.1.3 Parameters

obi_num	0	Obi number	sched_exp_time	6000.000000	Scheduled observation exposure time
ascdsver	8.1.2	ASCDS version number	ontime	5894.7850451097	Sum of GTIs [s]
caldbver	4.1.4	&#160	ontime3	5894.7850451097	Sum of GTIs [s]
date	2009-12-17T06:20:51	Date and time of file creation	l1events	17003	Number of level 1 events
revision	3	Processing version of data			

### 2.1.4 Events

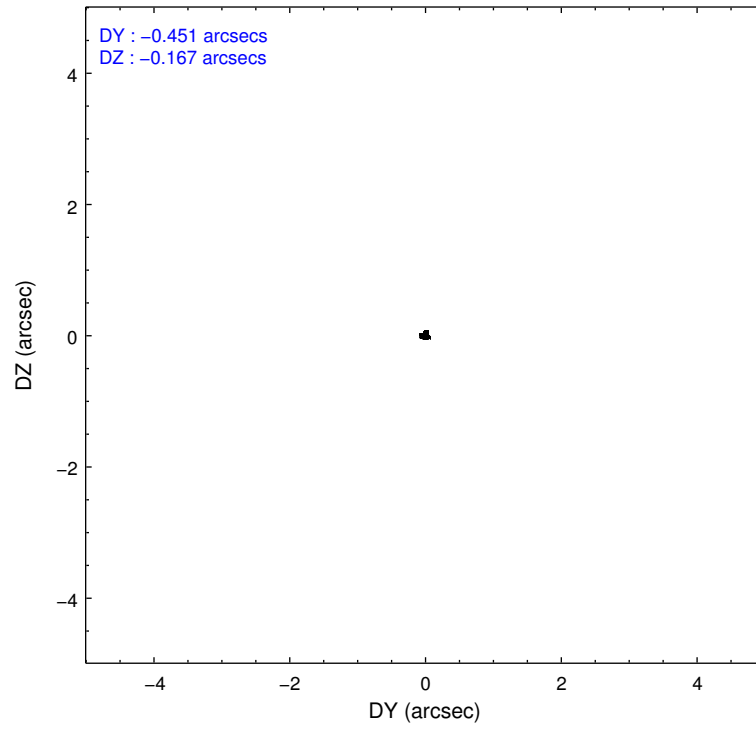
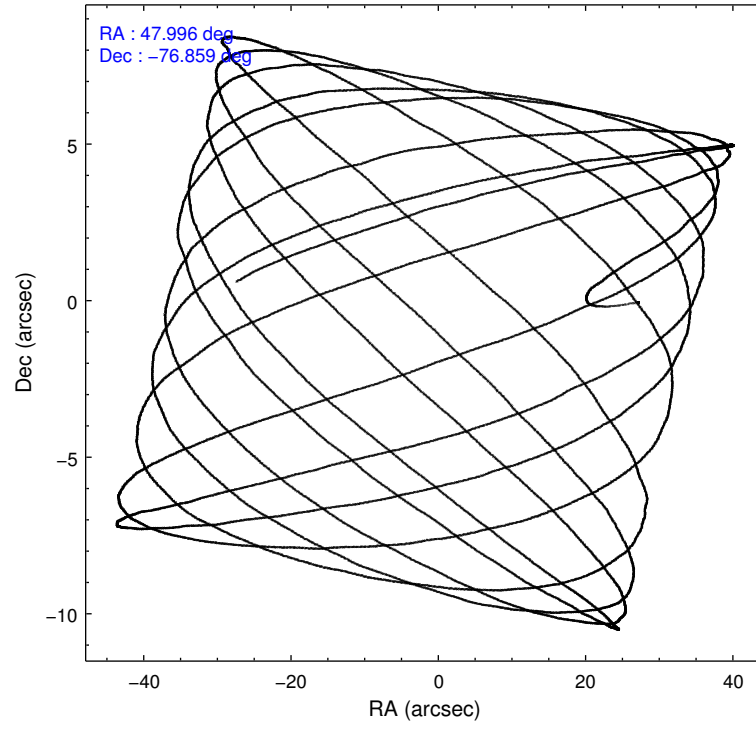
	<b>ccd 3</b>
level 1 events	17003
rejected events	12291
rejected %	72%

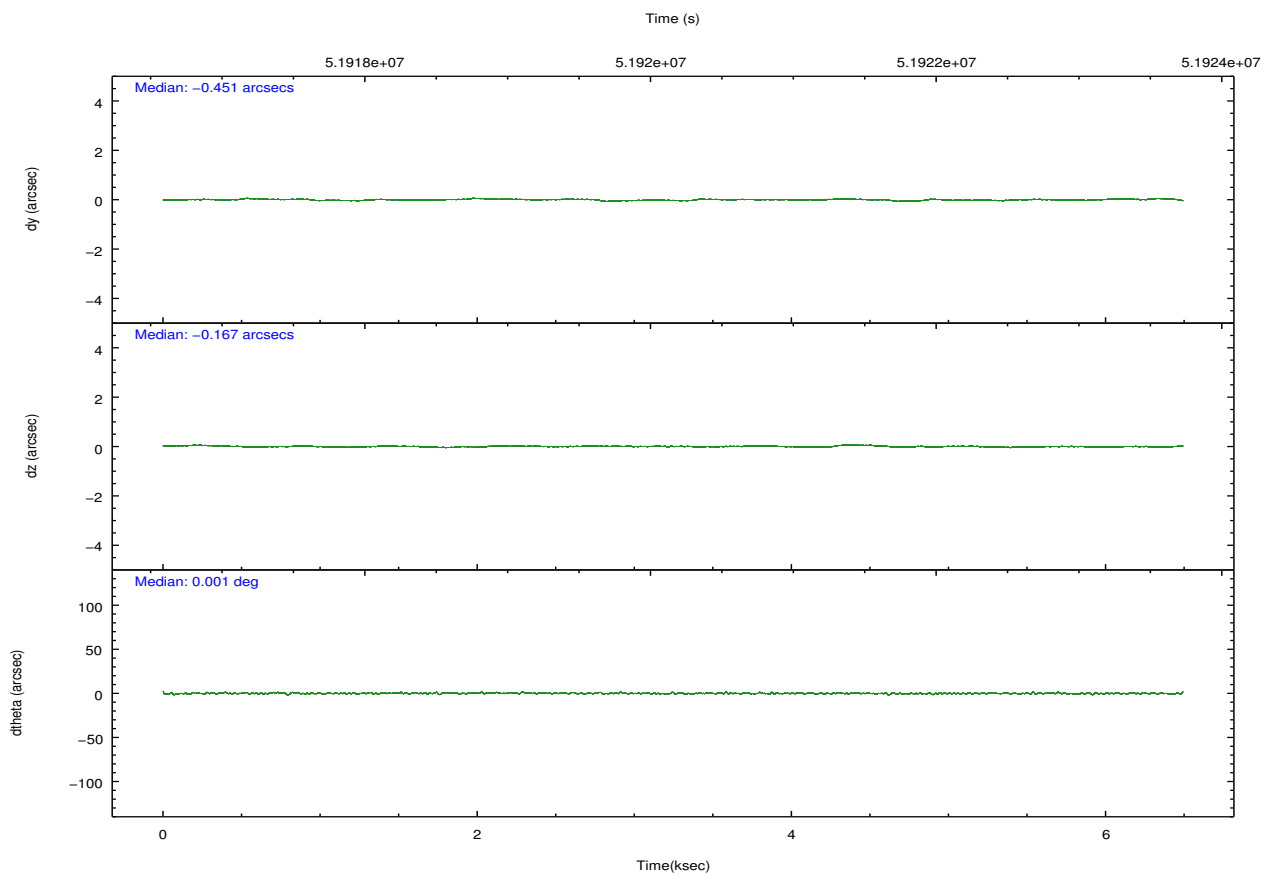
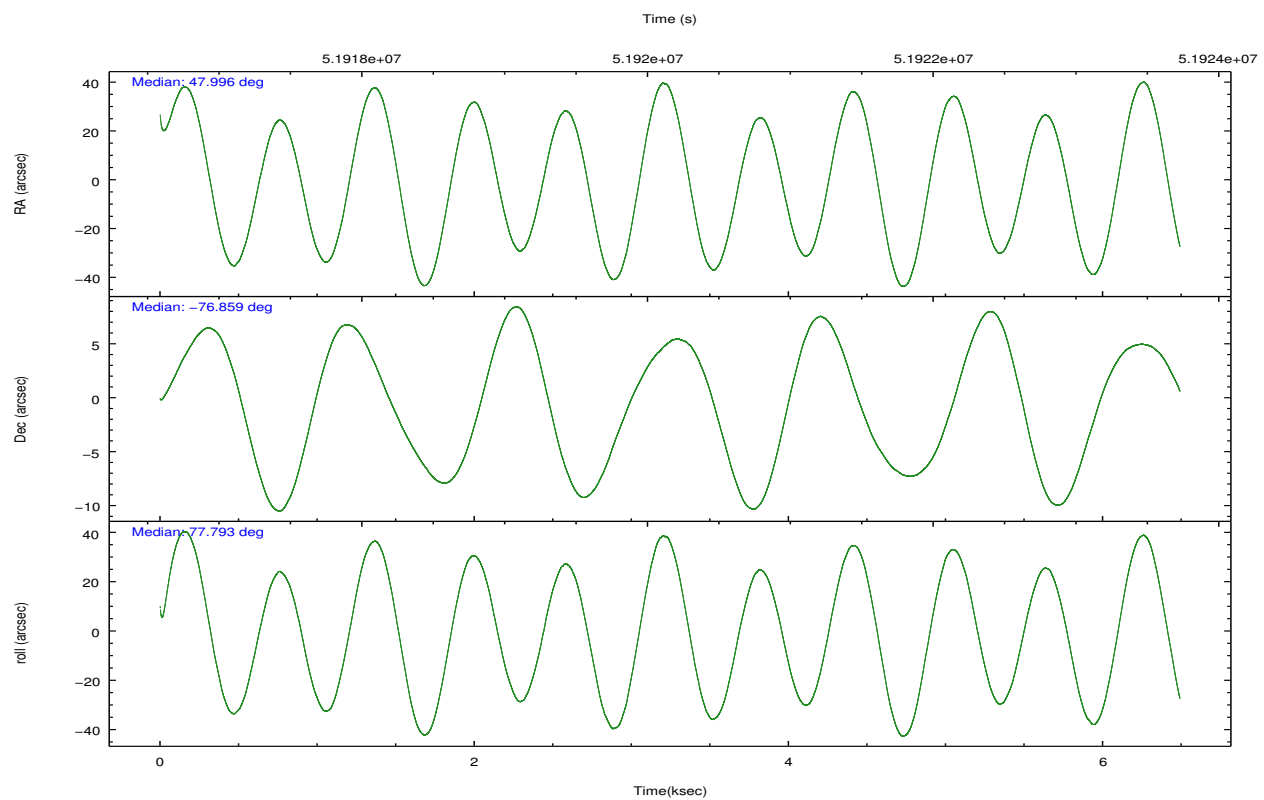
	<b>ccd 3</b>
grade 0 events	3155
	18%
grade 1 events	134
	0%
grade 2 events	670
	3%
grade 3 events	312
	1%
grade 4 events	295
	1%
grade 5 events	220
	1%
grade 6 events	283
	1%
grade 7 events	11934
	70%

## 2.2 Compared Parameters

Parameter	Planned	Actual	Parameter	Planned	Actual
Instrument	ACIS	ACIS	Obspar format version number	6	6
Detector	ACIS-3	ACIS-3	Obspar file type	PREDICTED	ACTUAL
Grating	NONE	NONE	Obspar update status	NONE	UPDATED
Data mode	FAINT	FAINT	Number of optional ACIS chips dropped	0	0
Observation mode	POINTING	POINTING	On-chip summing requested	N	N
Pointing RA	48.029096	47.99508036853703	Subarray requested	CUSTOM	1/8
Pointing Dec	-76.886393	-76.85952984749736	Subarray start row	896	896
Pointing Roll	77.621729	77.79726204988887	Subarray row count	128	128
SIM focus pos (mm)	-0.282348	-0.2445362258495889	Alternating exposures requested	N	N
SIM defocus (mm)	0.5	0.5378119897303977	Primary exposure time	0.000000	0.5
SIM translation stage pos (mm)	-233.592463	-233.5874344608287			
SIM translation stage offset (mm)	0	-0.005018542100998502			
Observation start time	51917406.184000	51916261.377722			
Observation start date	1999-08-24T21:29:02	1999-08-24T21:11:01			
Observation end time	51923406.184000	51923532.215483			
Observation end date	1999-08-24T23:09:02	1999-08-24T23:12:12			
Read mode	TIMED	TIMED			

## 2.3 Aspect



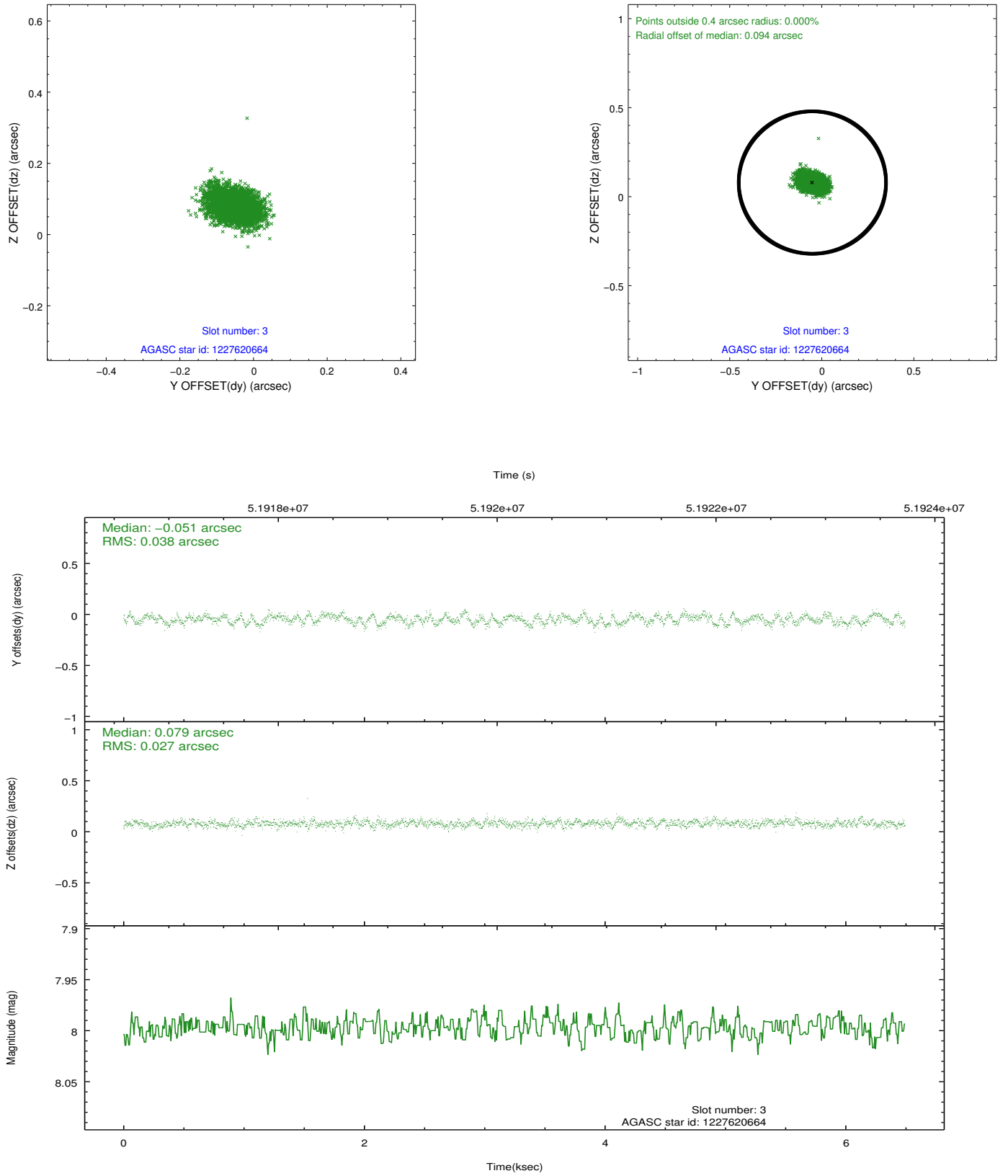


Slot Statistics

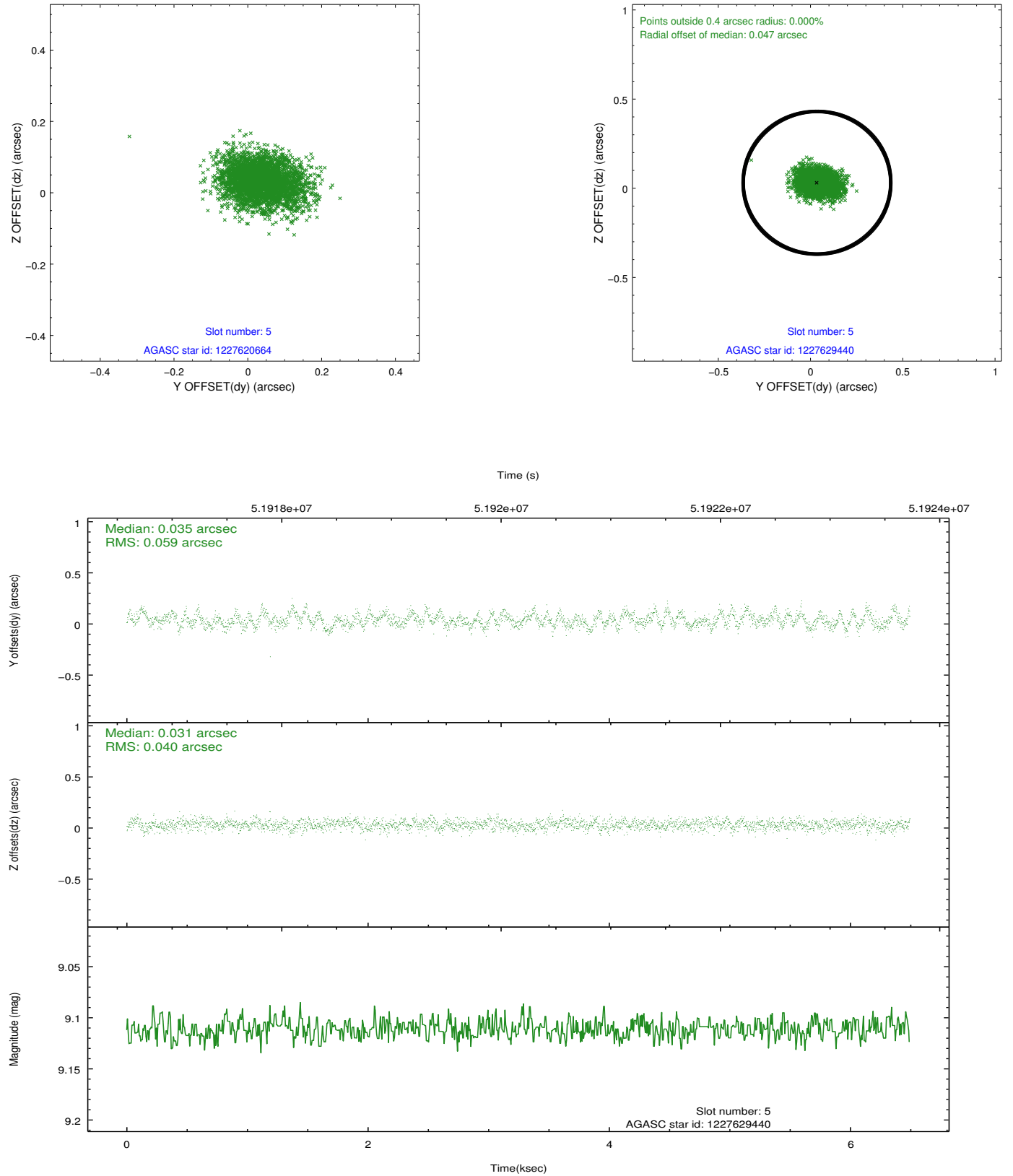
slot	status	id	mag	n_pts	med_dy	med_dz	dr1	dr2	ra	dec	mean_y	mean_z
0	FID	ACIS-I-2	7.21	3167	-0.030	0.069	0.011	0.016	0.000000	0.000000	-753.95	-829.33
1	FID	ACIS-I-4	7.24	3168	0.121	0.008	0.008	0.013	0.000000	0.000000	2160.35	1076.54
2	FID	ACIS-I-5	7.23	3168	-0.192	-0.008	0.008	0.013	0.000000	0.000000	-1807.41	1075.01
3	GUIDE	1227620664	8.00	3168	-0.051	0.079	0.050	0.081	46.150563	-77.166043	-1329.59	1247.07
4	UNUSED		0.00	0	0.000	0.000	0.000	0.000	0.000000	0.000000	0.00	0.00
5	GUIDE	1227629440	9.11	3167	0.035	0.031	0.075	0.124	48.268116	-77.028500	-459.75	-297.01
6	GUIDE	1227104240	9.80	3167	0.090	-0.080	0.095	0.153	48.955462	-76.524572	1432.17	-480.14
7	GUIDE	1227098648	9.63	3166	-0.073	-0.031	0.086	0.141	45.933257	-76.269428	1754.03	2219.24

## 2.4 Star Slots

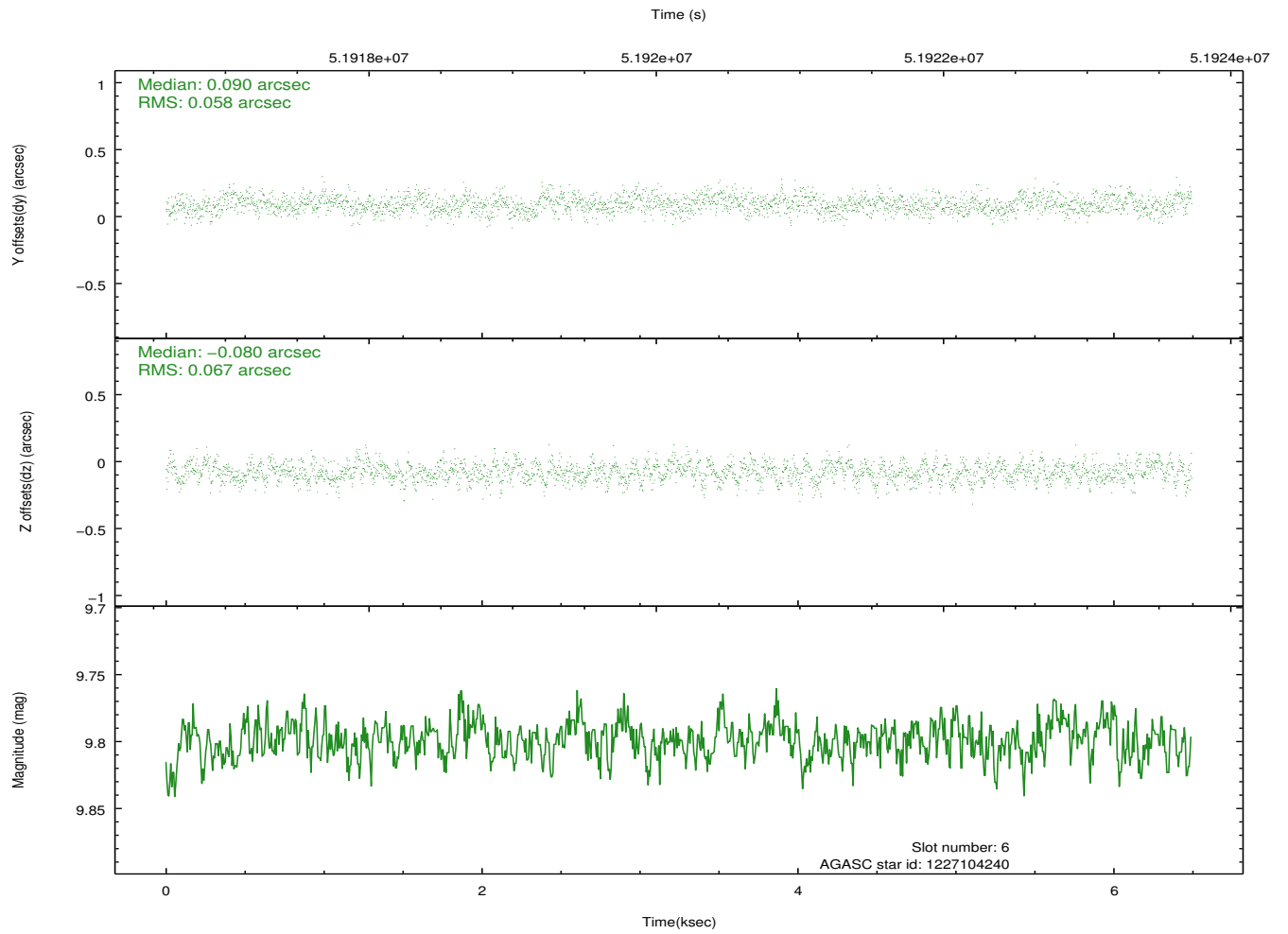
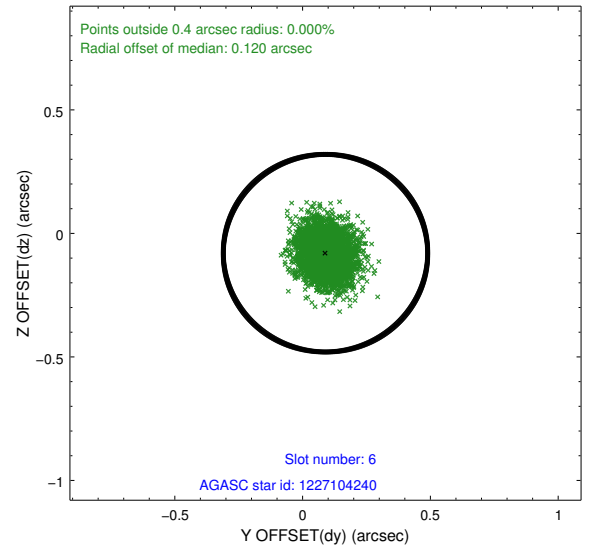
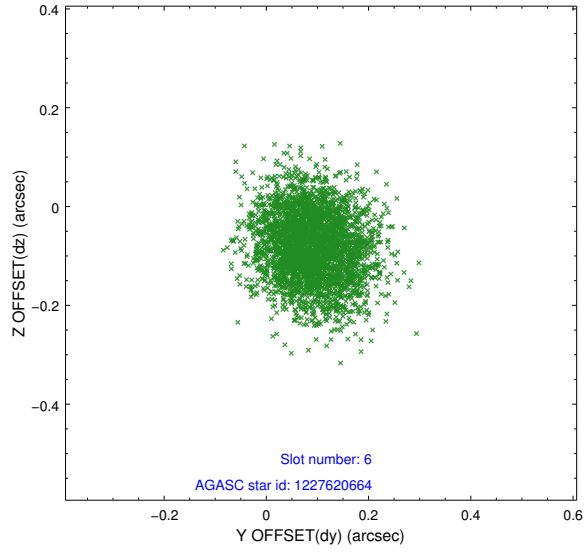
### 2.4.1 Slot 3



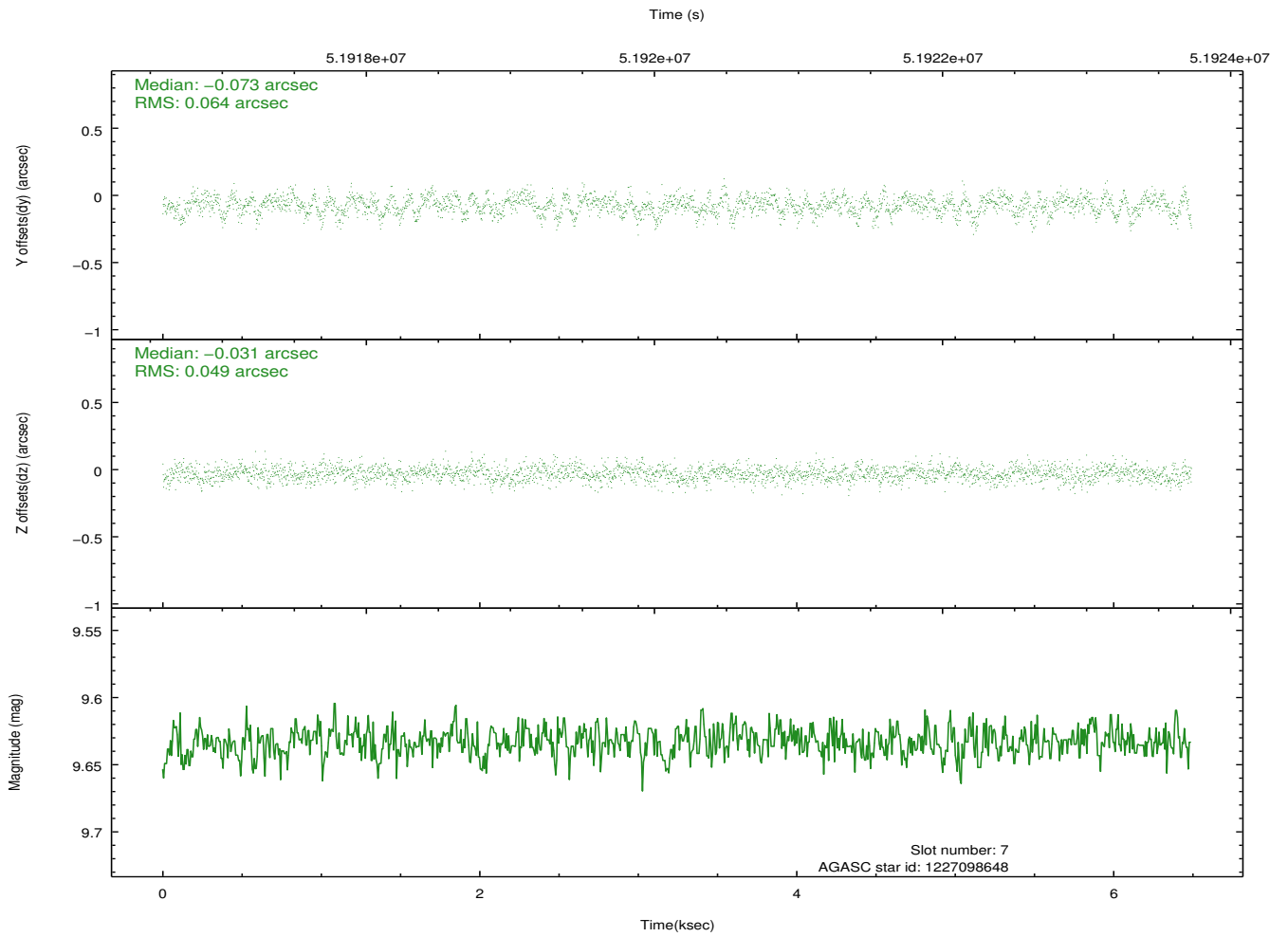
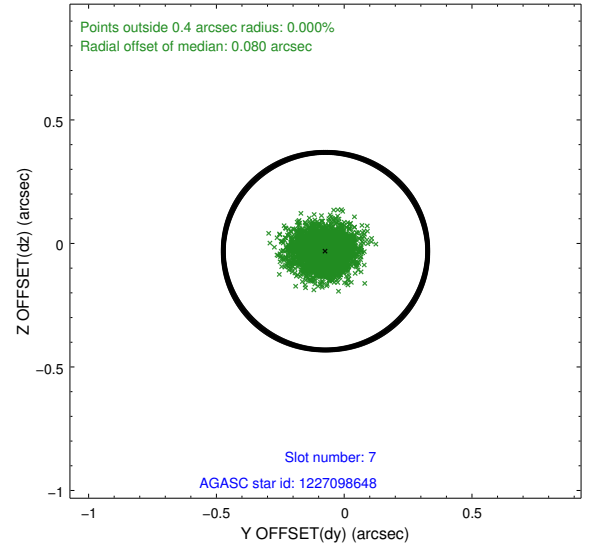
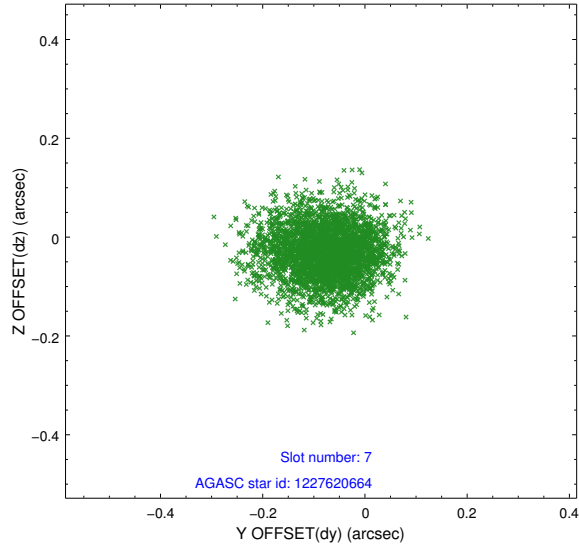
## 2.4.2 Slot 5



### 2.4.3 Slot 6

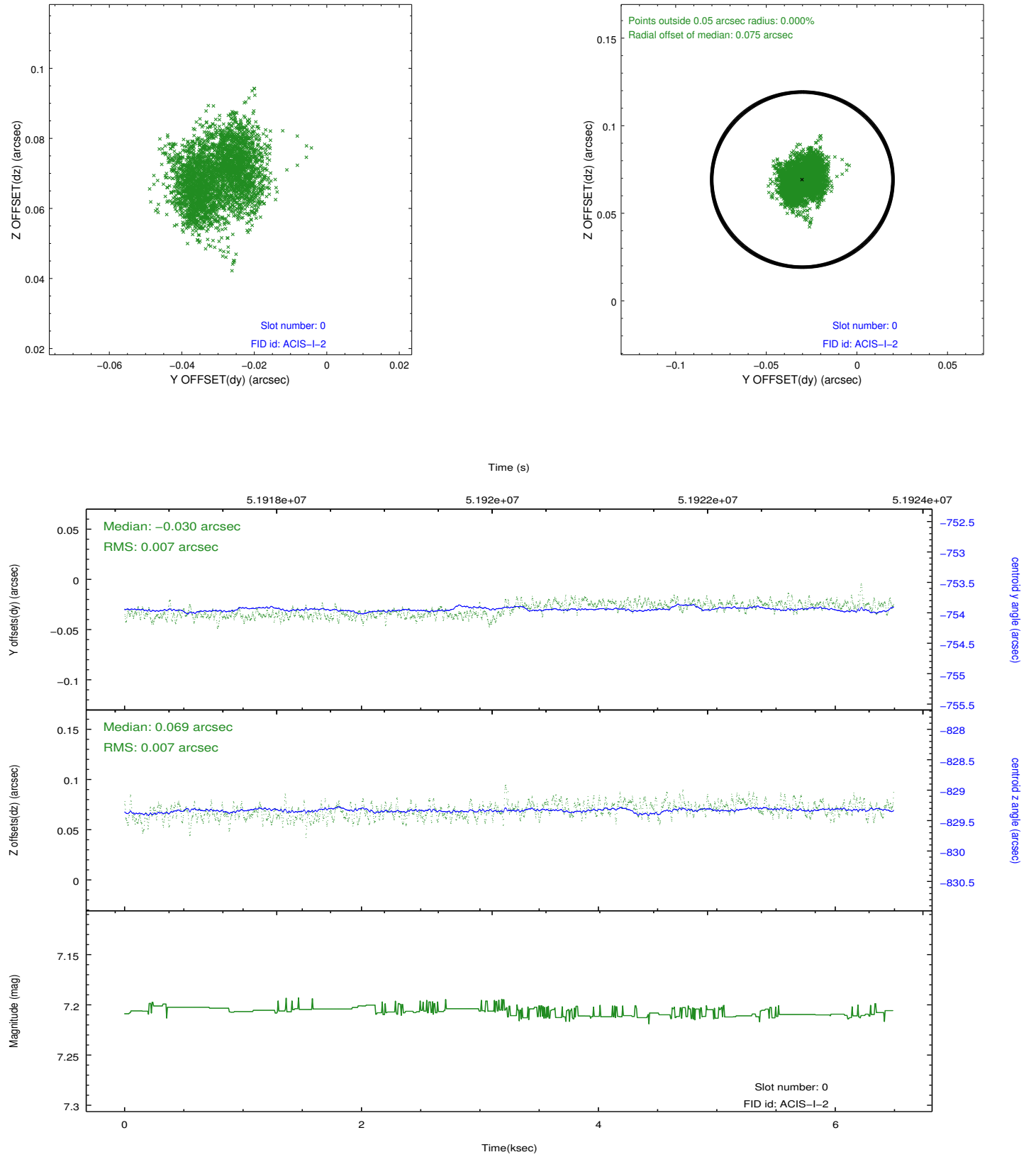


## 2.4.4 Slot 7

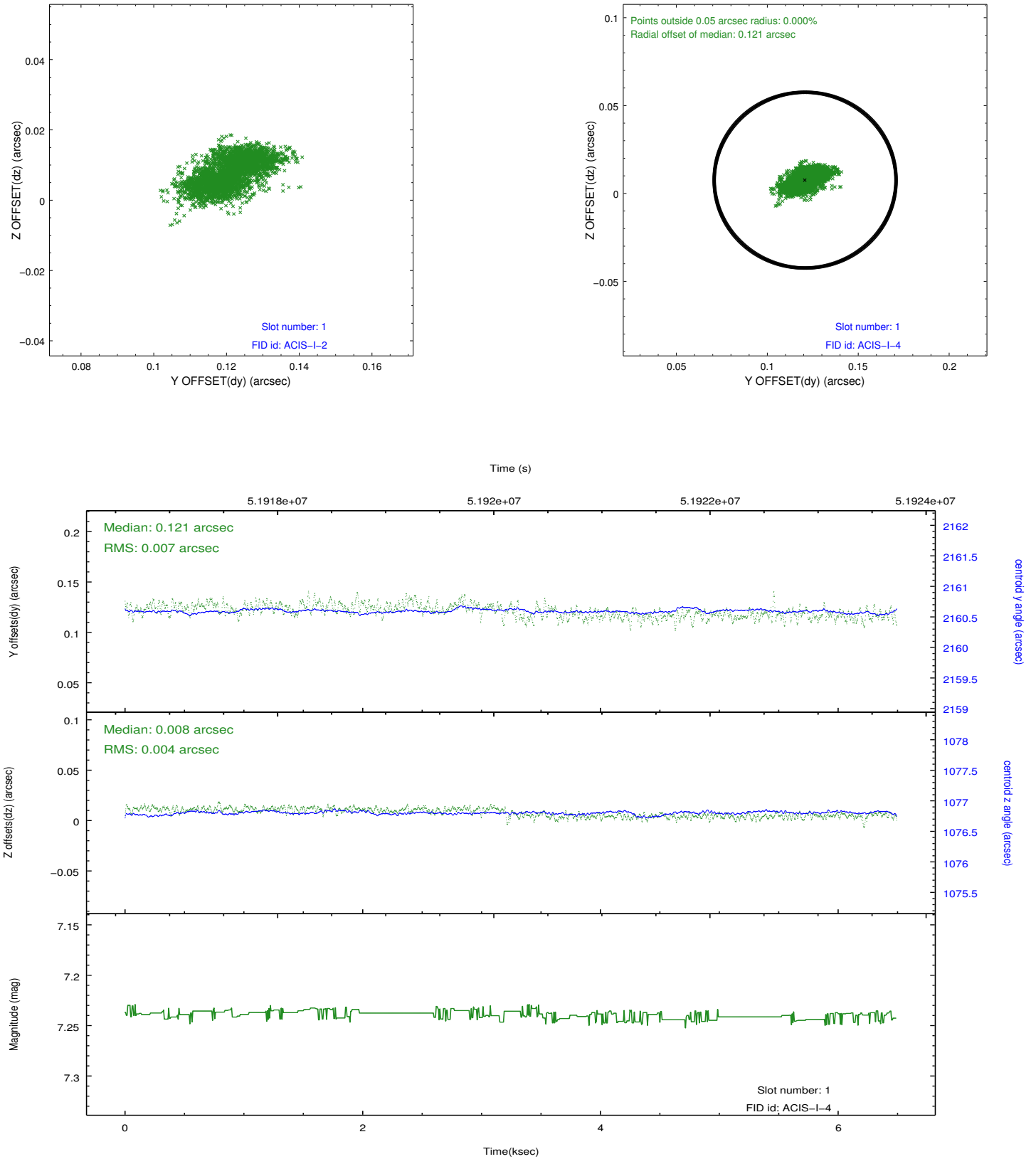


## 2.5 FID Slots

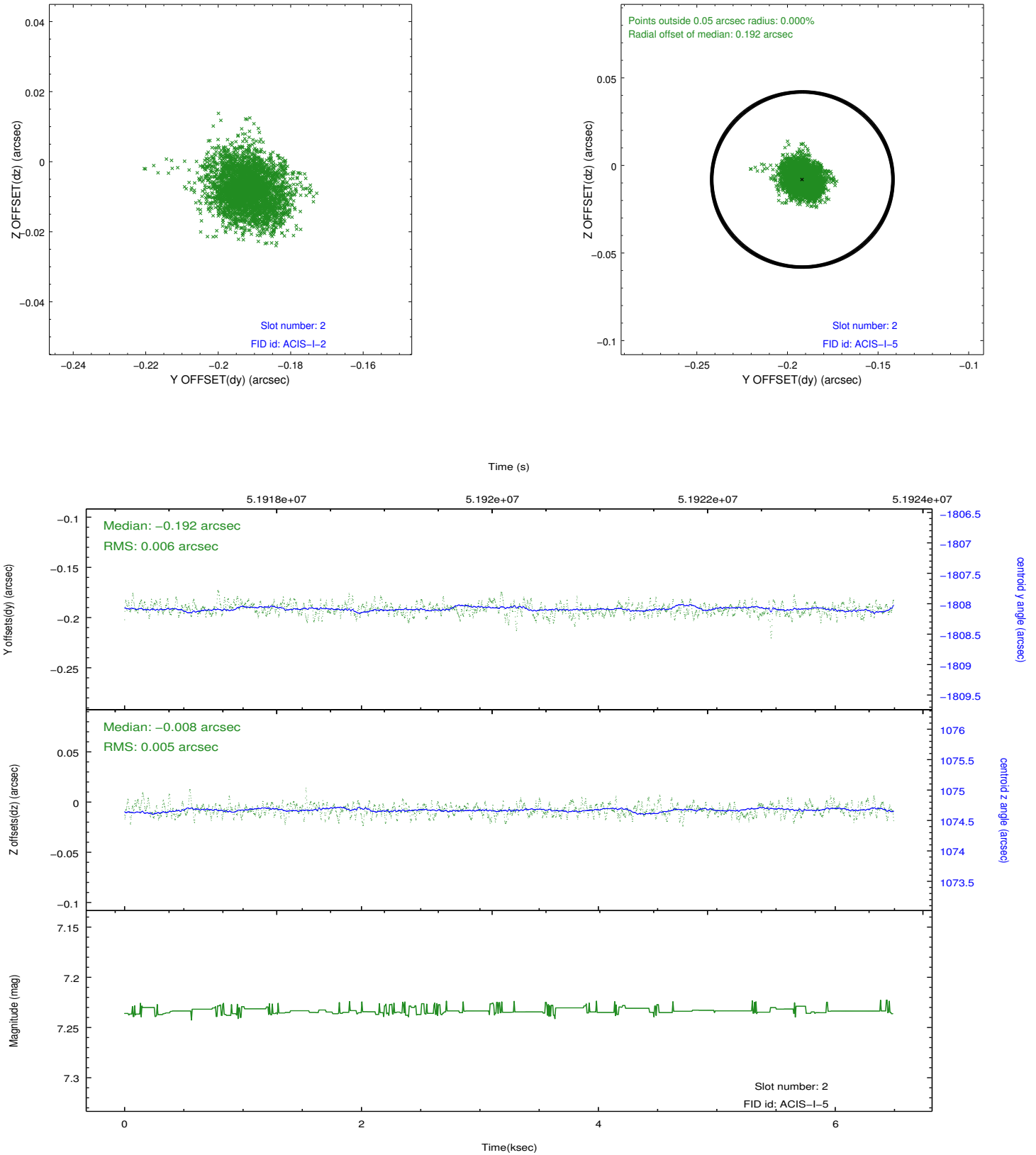
### 2.5.1 Slot 0



## 2.5.2 Slot 1



### 2.5.3 Slot 2



### 3 Point Sources

# A Summary

## A.1 Status

V&V Scientist	Joy Nichols
V&V Date (YYYY-MM-DD)	2010.08.03
V&V Edition	1
V&V Disposition and Status	OK
V&V Charge Time	5.892

## A.2 Comments

ACIS plate focus measurements. SIM TT = 92905, SIM FA = -167.

===

Slot 4 was not utilized in this observation.

==

The focal plane temperature is approximately -100 C during this observation. This reprocessing of the data applies no CTI correction because none is available for this temperature at present.

The ACIS CTI correction has not been calibrated at this temperature, because it was early in the mission, and ACIS had not yet been lowered to the standard -119.7 C. Both front and back illuminated chips are affected. However a T\_GAIN correction has been applied to the BI chips (ACIS-5 and ACIS-7) data included here.

The ACIS spectral response calibration is less accurate at these warmer temperatures than it is at -119.7 C. Users whose science objectives depend on the most accurate spectral response (ie: fitting line-rich spectra) may notice an effect. Users whose science objectives do not depend on the most accurate spectral response should not notice an effect.