

# V&V Reference Report

## L2 ASCDS Version : 8.4.5

Observation 1741 - L2 Version 6  
Chandra X-Ray Center

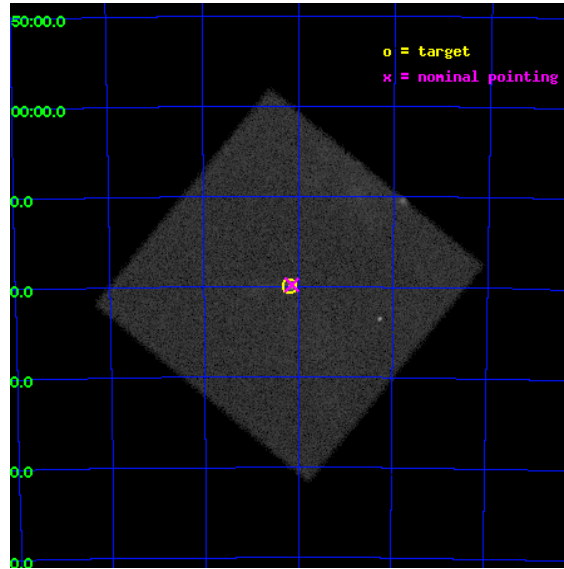
L2 Processing Date : Aug 29 2012

## Contents

<b>1</b>	<b>Front</b>	<b>2</b>
<b>2</b>	<b>OBI</b>	<b>3</b>
2.1	OBI . . . . .	3
2.1.1	Images . . . . .	3
2.1.2	Parameters . . . . .	4
2.1.3	Events . . . . .	4
2.2	Compared Parameters . . . . .	5
2.3	Aspect . . . . .	6
2.4	Star Slots . . . . .	9
2.4.1	Slot 3 . . . . .	9
2.4.2	Slot 4 . . . . .	10
2.4.3	Slot 5 . . . . .	11
2.4.4	Slot 6 . . . . .	12
2.4.5	Slot 7 . . . . .	13
2.5	FID Slots . . . . .	14
2.5.1	Slot 0 . . . . .	14
2.5.2	Slot 1 . . . . .	15
2.5.3	Slot 2 . . . . .	16
<b>A</b>	<b>Summary</b>	<b>17</b>
A.1	Status . . . . .	17
A.2	Comments . . . . .	17

# 1 Front

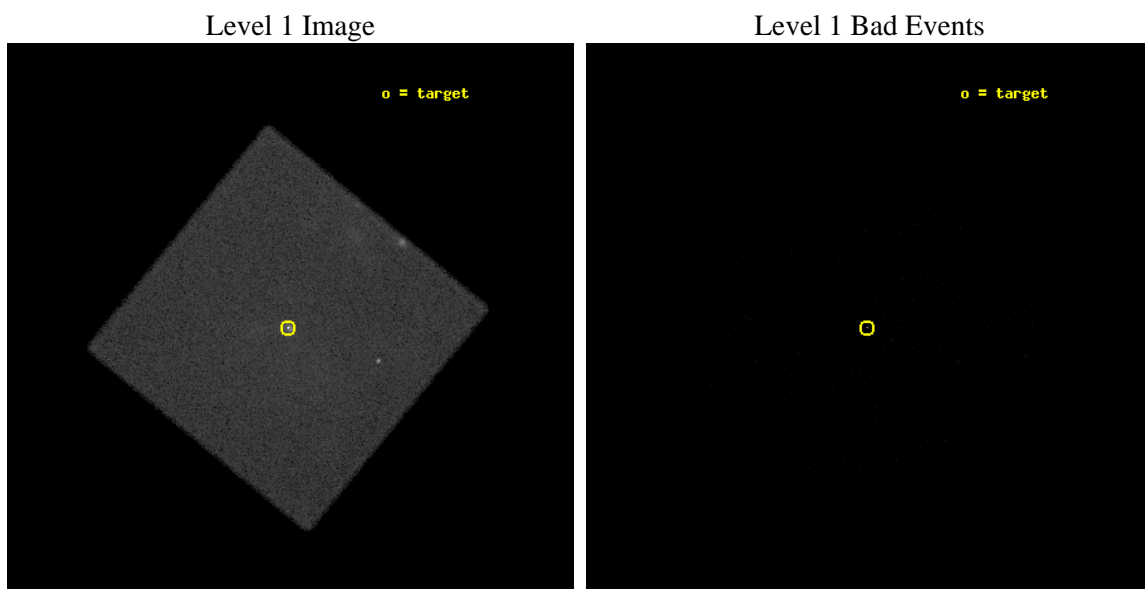
seq_num	590190	Sequence number
obs_id	1741	Observation id
title	VERIFICATION OF AXAF TIMING CAPABILITY	Proposal title
observer	Dr. CXC Calibration	Principal investigator
object	PSR B0540-69	Source name
ra_targ	85.04625	Observer's specified target RA [deg]
dec_targ	-69.332	Observer's specified target Dec [deg]
ra_nom	85.035295359054	Nominal RA [deg]
dec_nom	-69.329893859089	Nominal Dec [deg]
roll_nom	174.33738655916	Nominal Roll [deg]
revision	6	Processing version of data
ontime	10074.981621414	[s]
livetime	10024.622239871	Ontime multiplied by DTCOR
l2events	270486	Number of level 2 events



## 2 OBI

### 2.1 OBI

#### 2.1.1 Images



### 2.1.2 Parameters

obi_num	0	Obi number	sched_exp_time	9885.000000	[s] Scheduled observation exposure time
ascdsver	8.4.5	Processing system revision	ontime	10074.981621414	[s]
caldsver	4.5.1.1	&#160	l1events	419952	Number of level 1 events
date	2012-08-29T07:44:07	Date and time of file creation			
revision	6	Processing version of data			

### 2.1.3 Events

#### Level 1 Events

	<b>segment 0</b>
level 1 events	419952
rejected events	26258
rejected %	6%

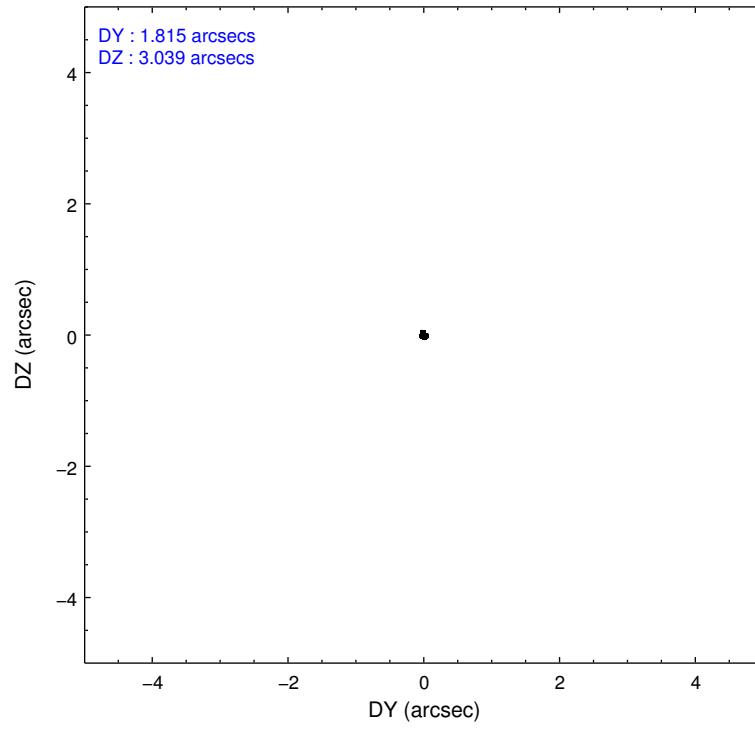
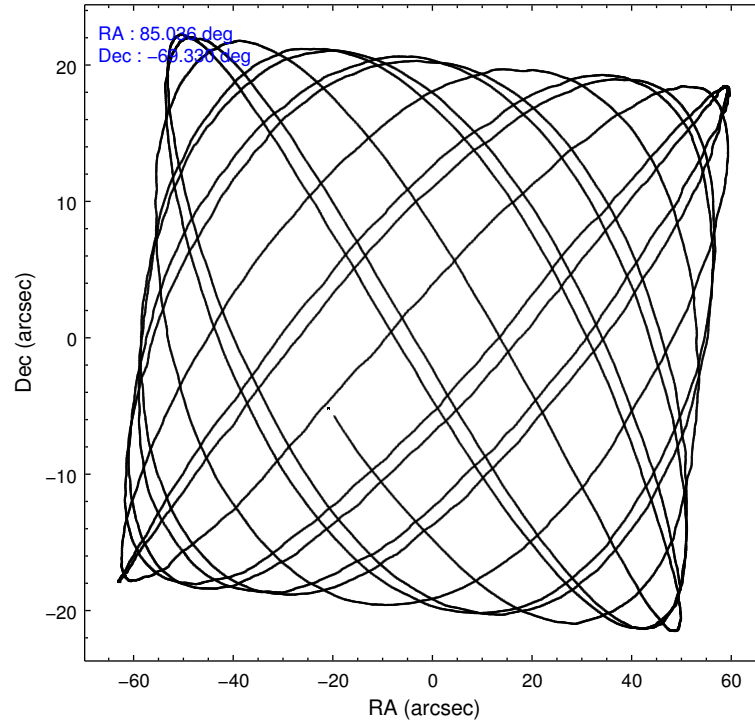


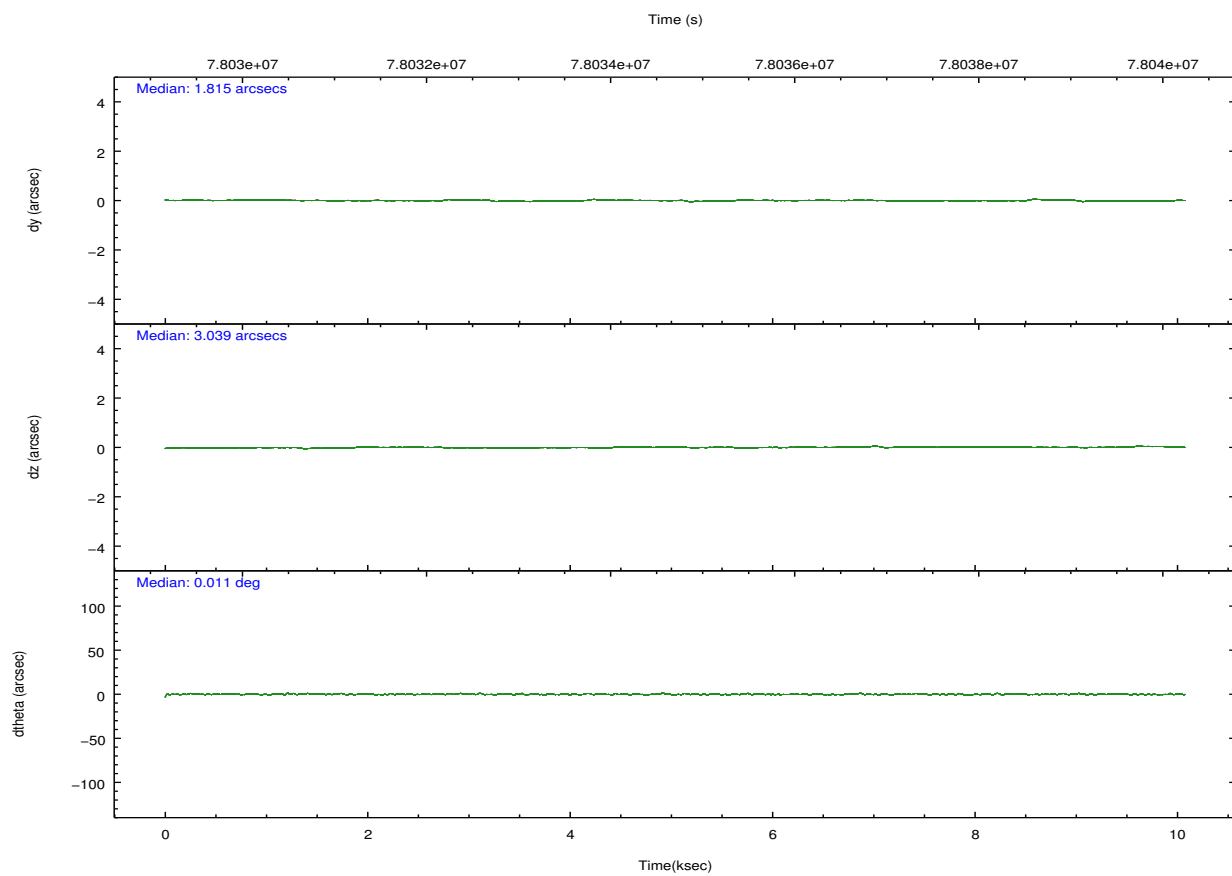
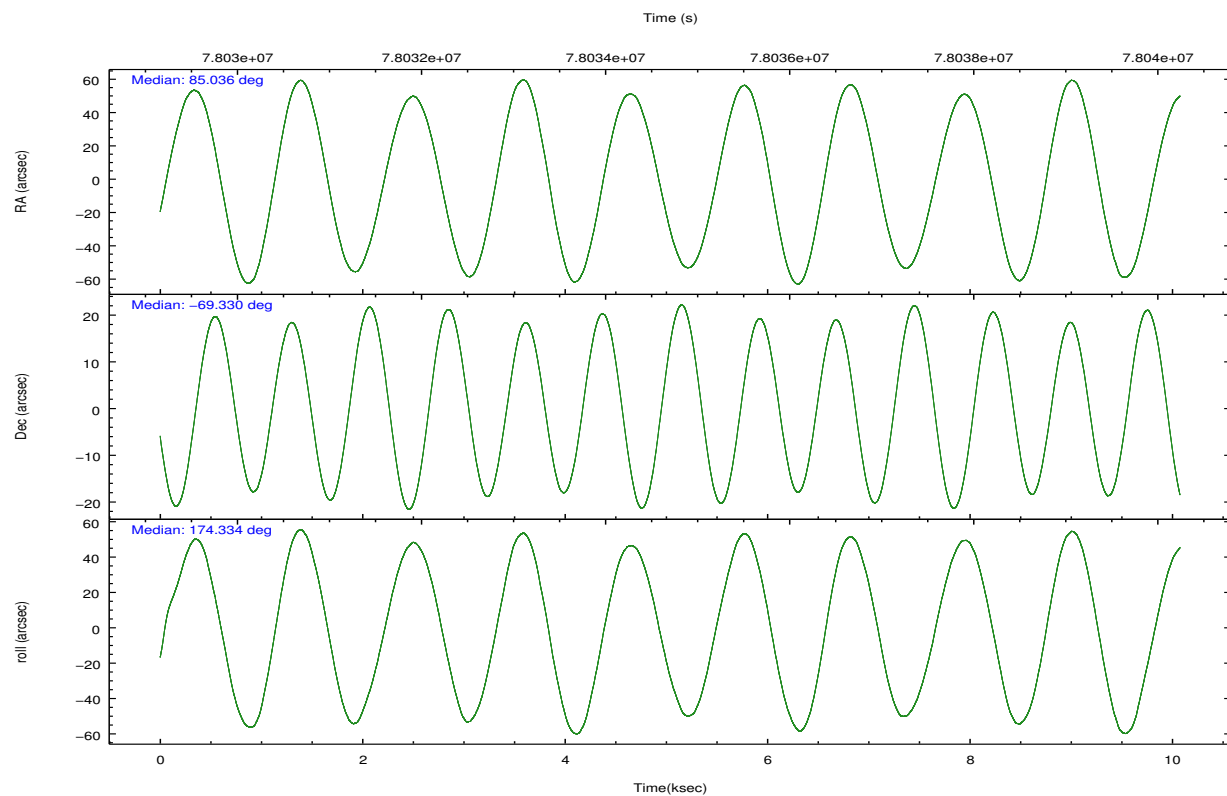
## 2.2 Compared Parameters

Parameter	Planned	Actual
Instrument	HRC	HRC
Detector	HRC-I	HRC-I
Grating	NONE	NONE
Data mode	OBSERVING	OBSERVING
Observation mode	POINTING	POINTING
[deg] Pointing RA	85.105024	85.03529535905351
[deg] Pointing Dec	-69.318249	-69.32989385908861
[deg] Pointing Roll	174.498119	174.3373865591568
[mm] SIM focus pos	-1.040293	-1.038866356238299
[mm] SIM defocus	0	0.001426264420575141
[mm] SIM translation stage pos	126.985494	126.9829799899862
[mm] SIM translation stage offset	0	0.002508901615314585
[s] Observation start time (MET)	78029852.184000	78029476.03646
Observation start date	2000-06-22T02:56:28	2000-06-22T02:51:16
[s] Observation end time (MET)	78039737.184000	78039873.636843
Observation end date	2000-06-22T05:41:13	2000-06-22T05:44:33

Parameter	Planned	Actual
Obspar format version number	7	7
Obspar file type	PREDICTED	ACTUAL
Obspar update status	NONE	UPDATED

## 2.3 Aspect



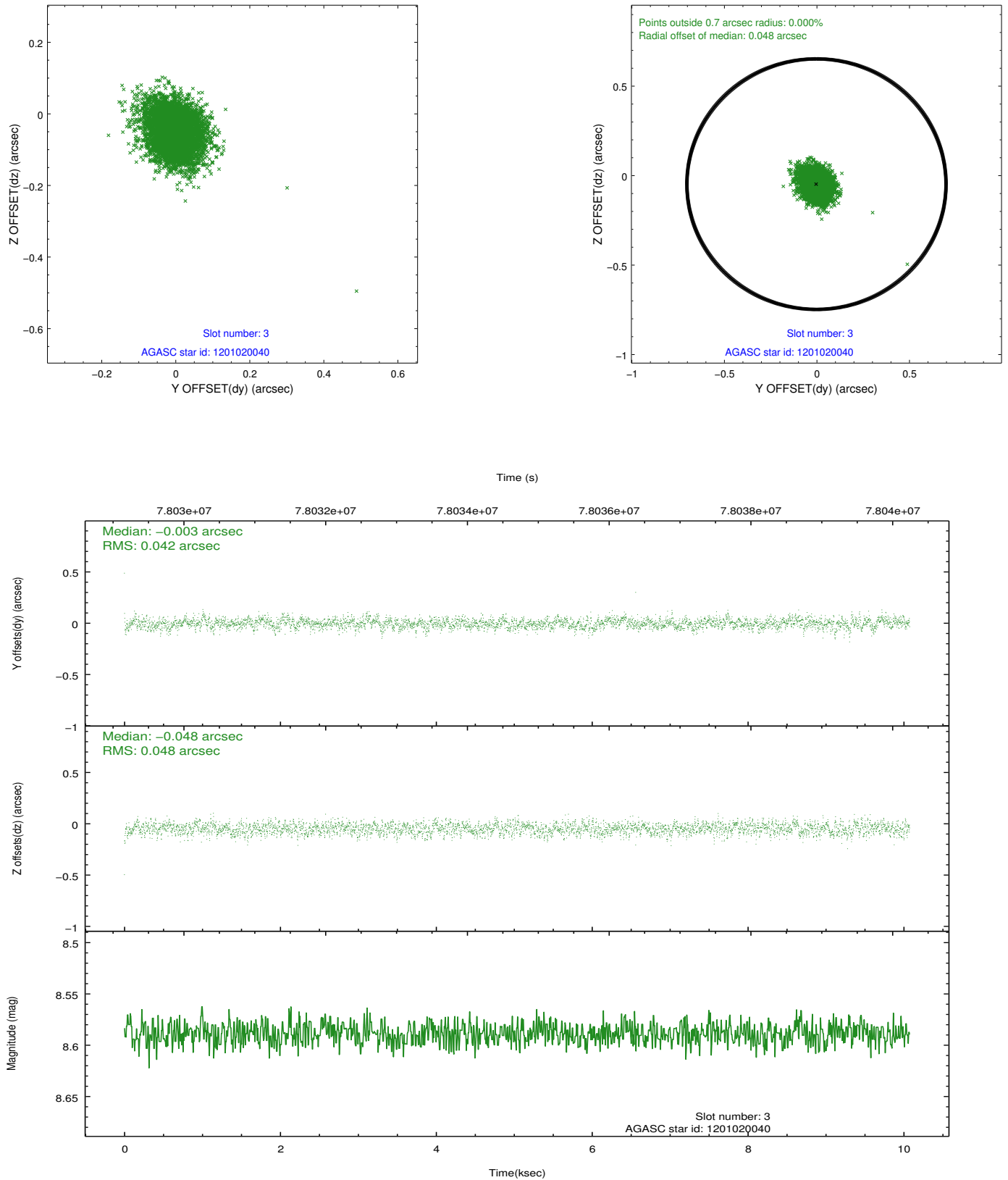


### Slot Statistics

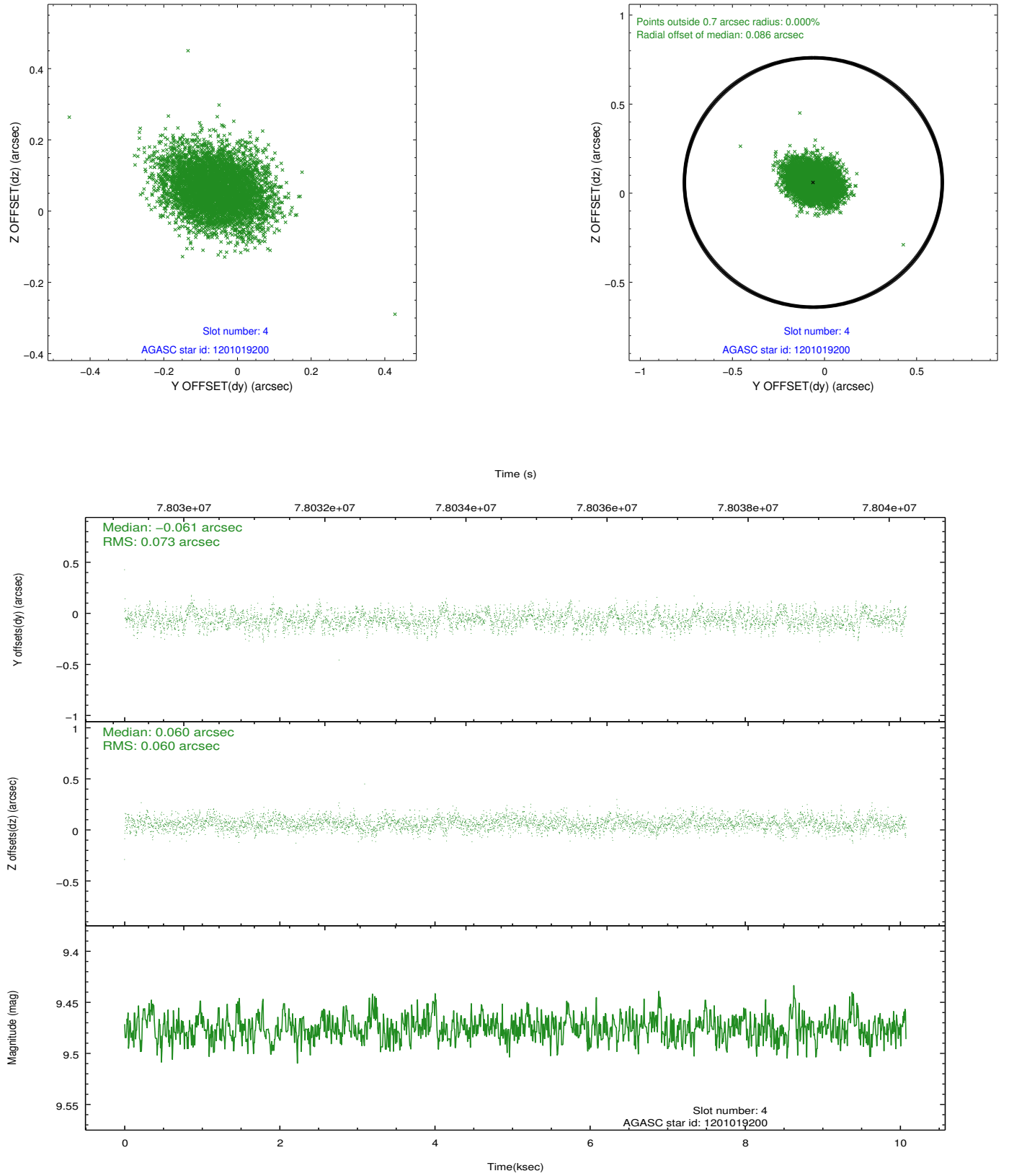
slot	status	id	mag	n_pts	med_dy	med_dz	dr1	dr2	ra	dec	mean_y	mean_z
0	FID	HRC-I-1	6.94	2458	0.067	0.027	0.006	0.010	0.000000	0.000000	-757.24	-1290.71
1	FID	HRC-I-3	7.02	2458	0.031	-0.049	0.006	0.011	0.000000	0.000000	-1185.99	1013.27
2	FID	HRC-I-4	6.98	2458	0.017	-0.068	0.005	0.008	0.000000	0.000000	1285.10	1011.70
3	GUIDE	1201020040	8.59	4916	-0.003	-0.048	0.067	0.109	85.379163	-68.879396	-201.23	-1605.95
4	GUIDE	1201019200	9.48	4914	-0.061	0.060	0.099	0.163	84.213591	-68.777384	1343.49	-1818.54
5	GUIDE	1201406992	9.27	4914	0.062	-0.062	0.085	0.142	83.682859	-69.471866	1733.40	743.08
6	GUIDE	1200885760	9.47	4915	-0.082	0.083	0.095	0.154	83.723637	-68.777667	1978.06	-1744.01
7	GUIDE	1201020088	10.59	4908	0.085	-0.033	0.139	0.225	86.319248	-68.997756	-1448.42	-1283.72

## 2.4 Star Slots

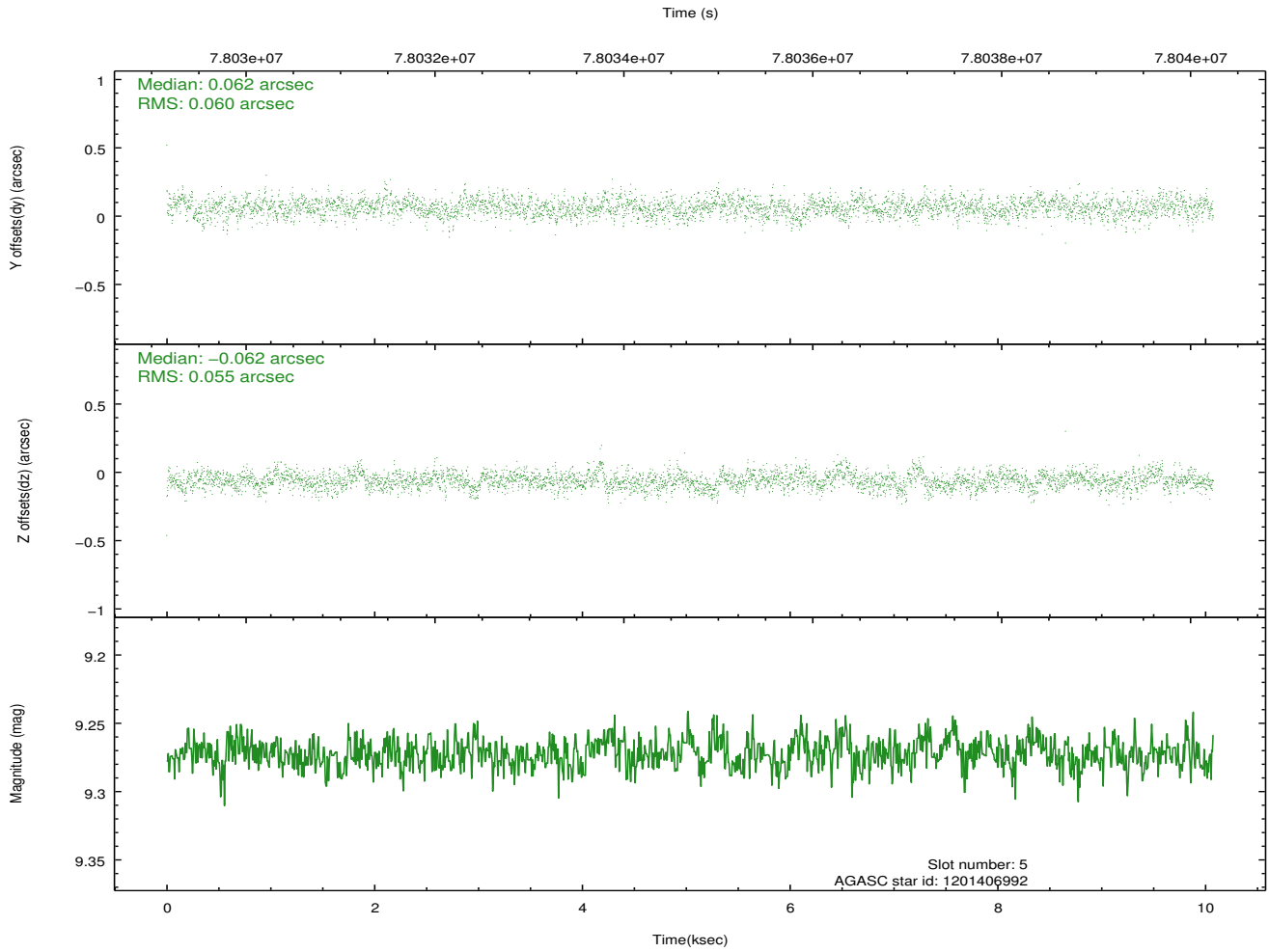
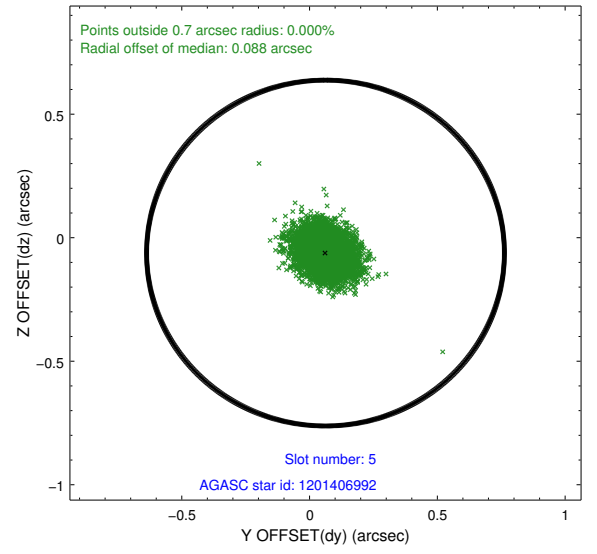
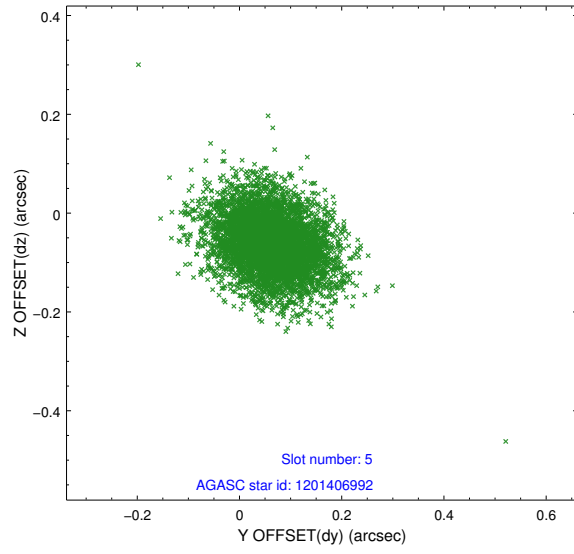
### 2.4.1 Slot 3



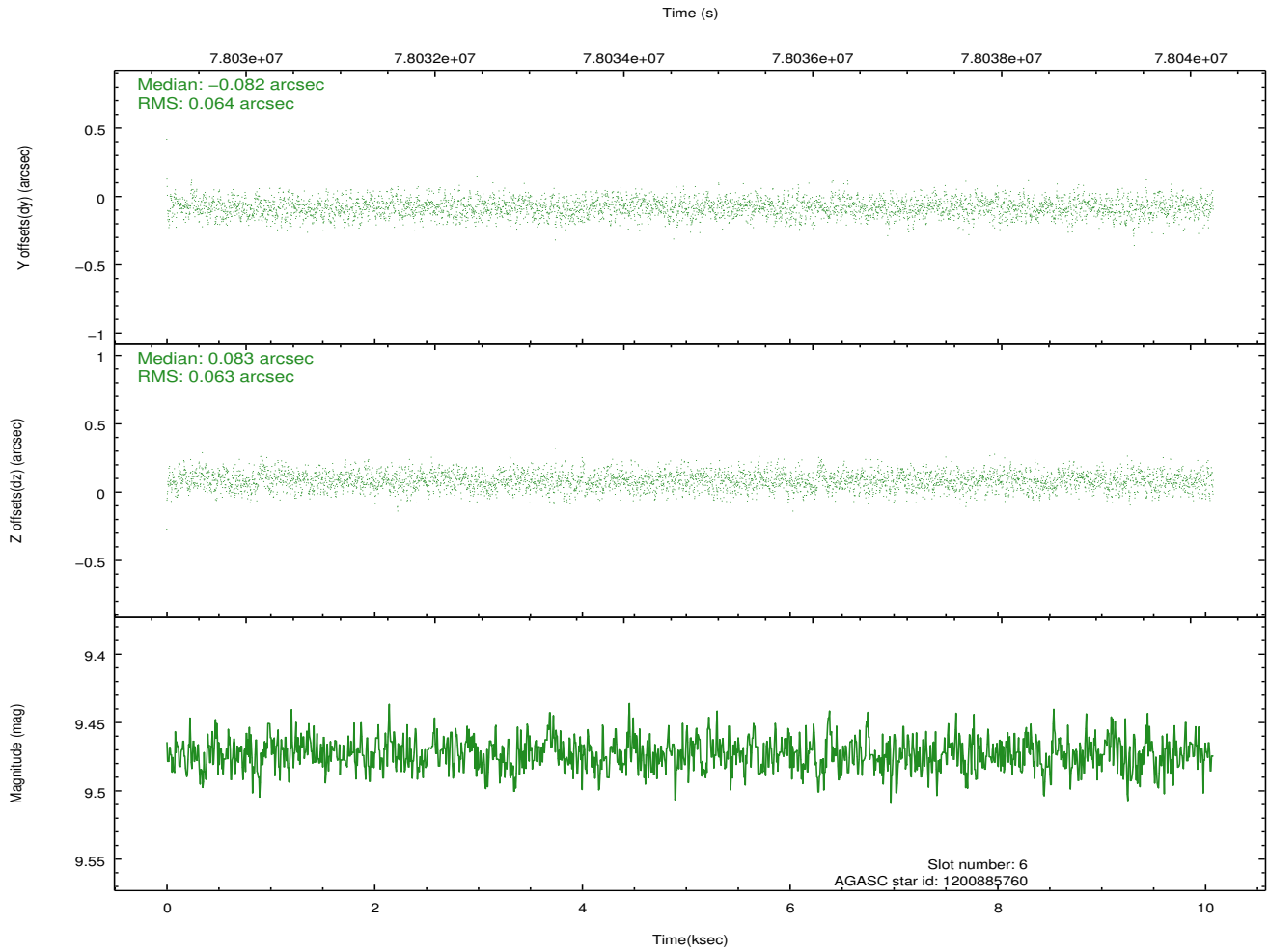
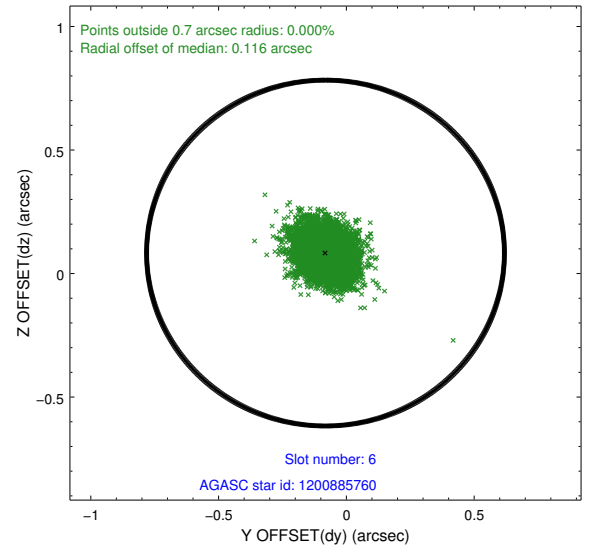
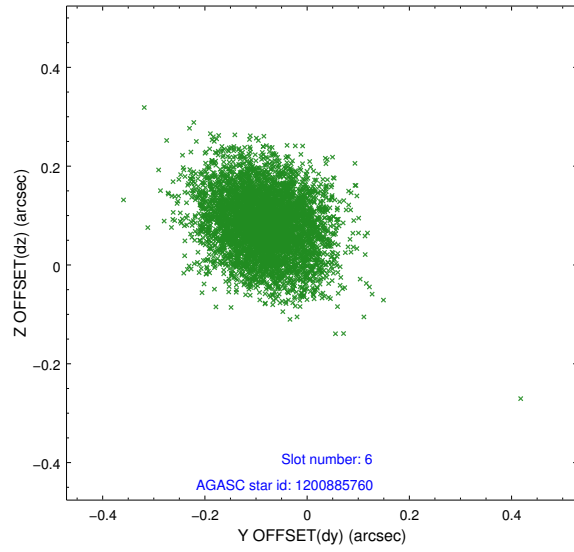
## 2.4.2 Slot 4



### 2.4.3 Slot 5

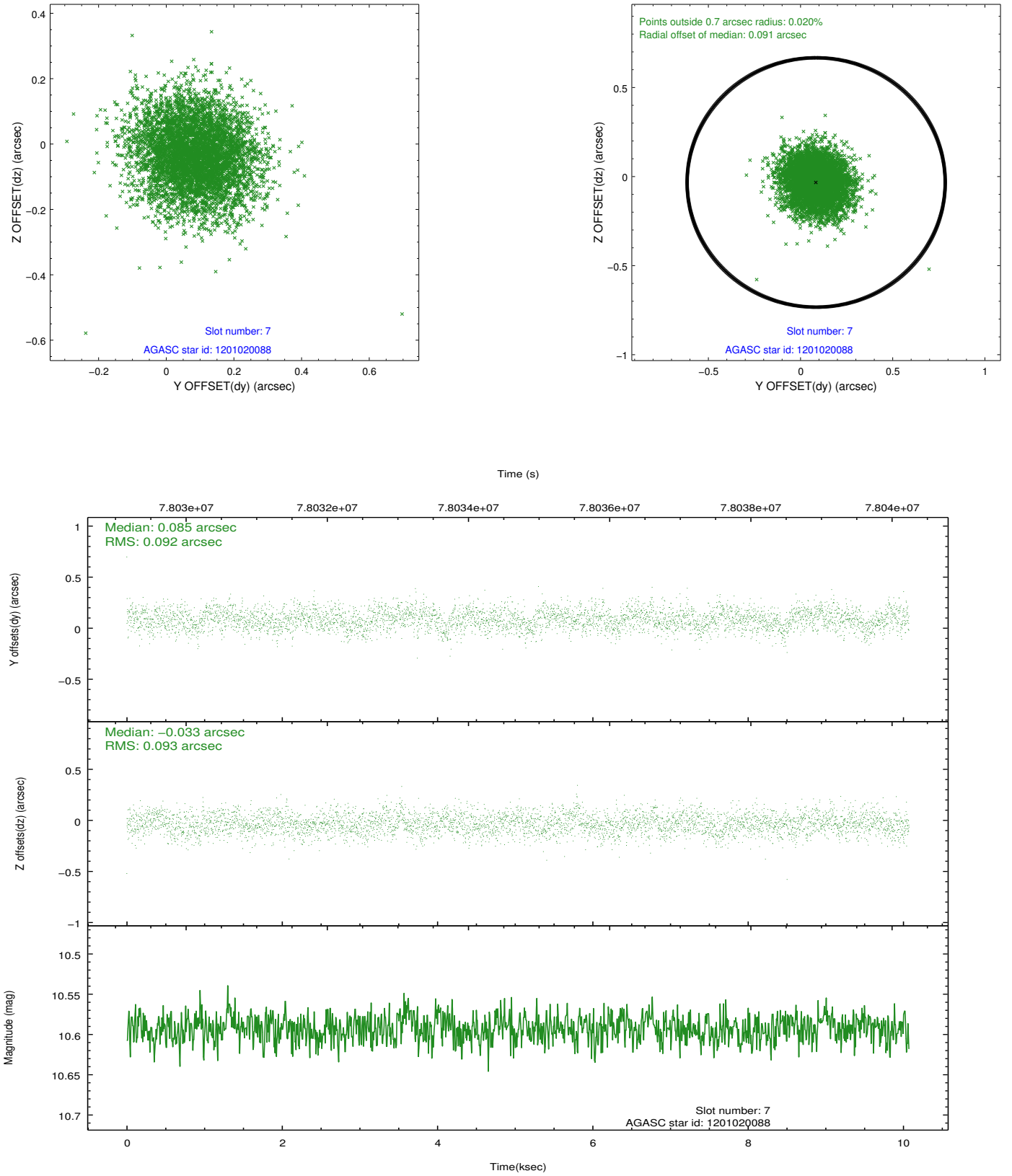


## 2.4.4 Slot 6



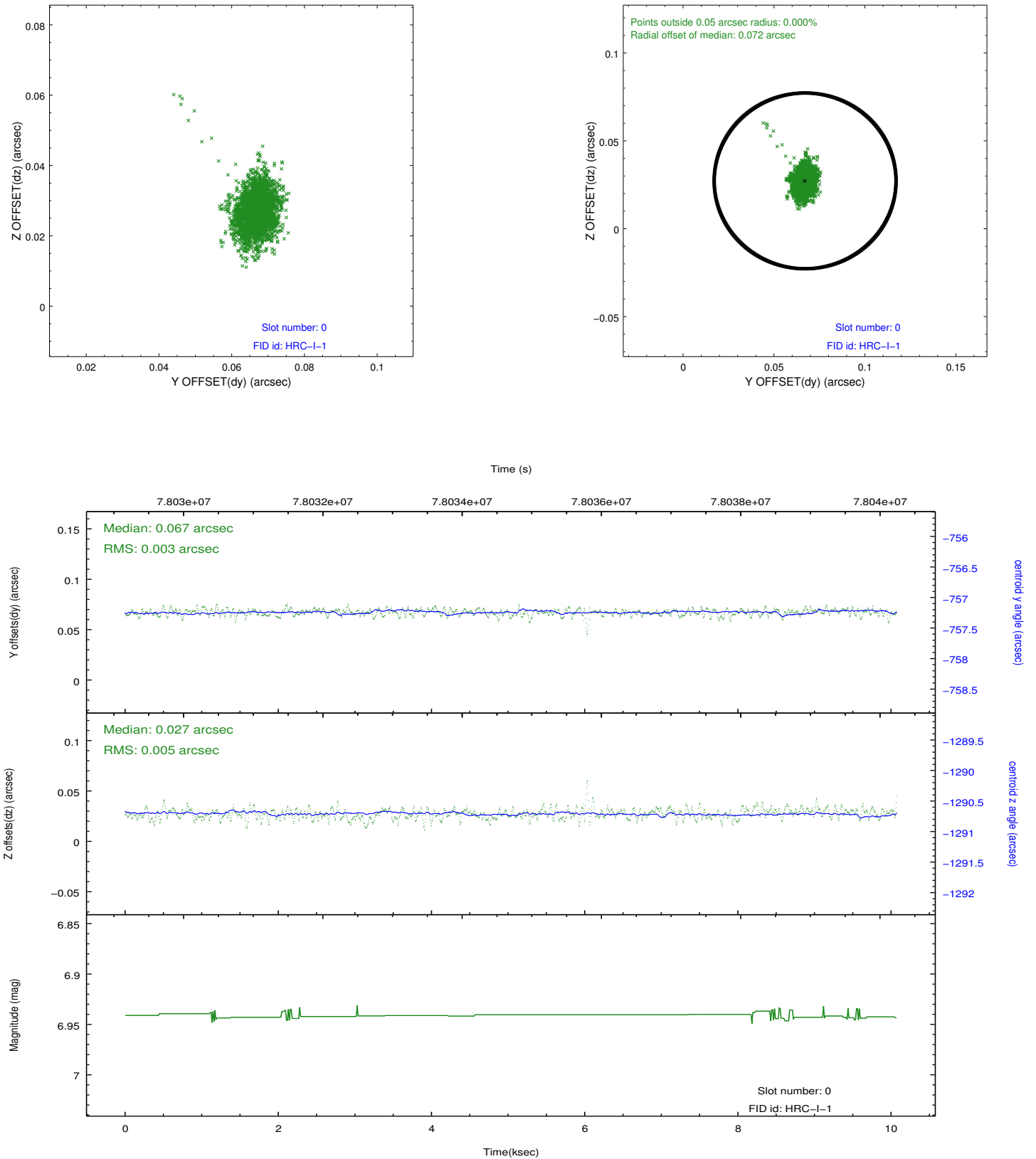


## 2.4.5 Slot 7

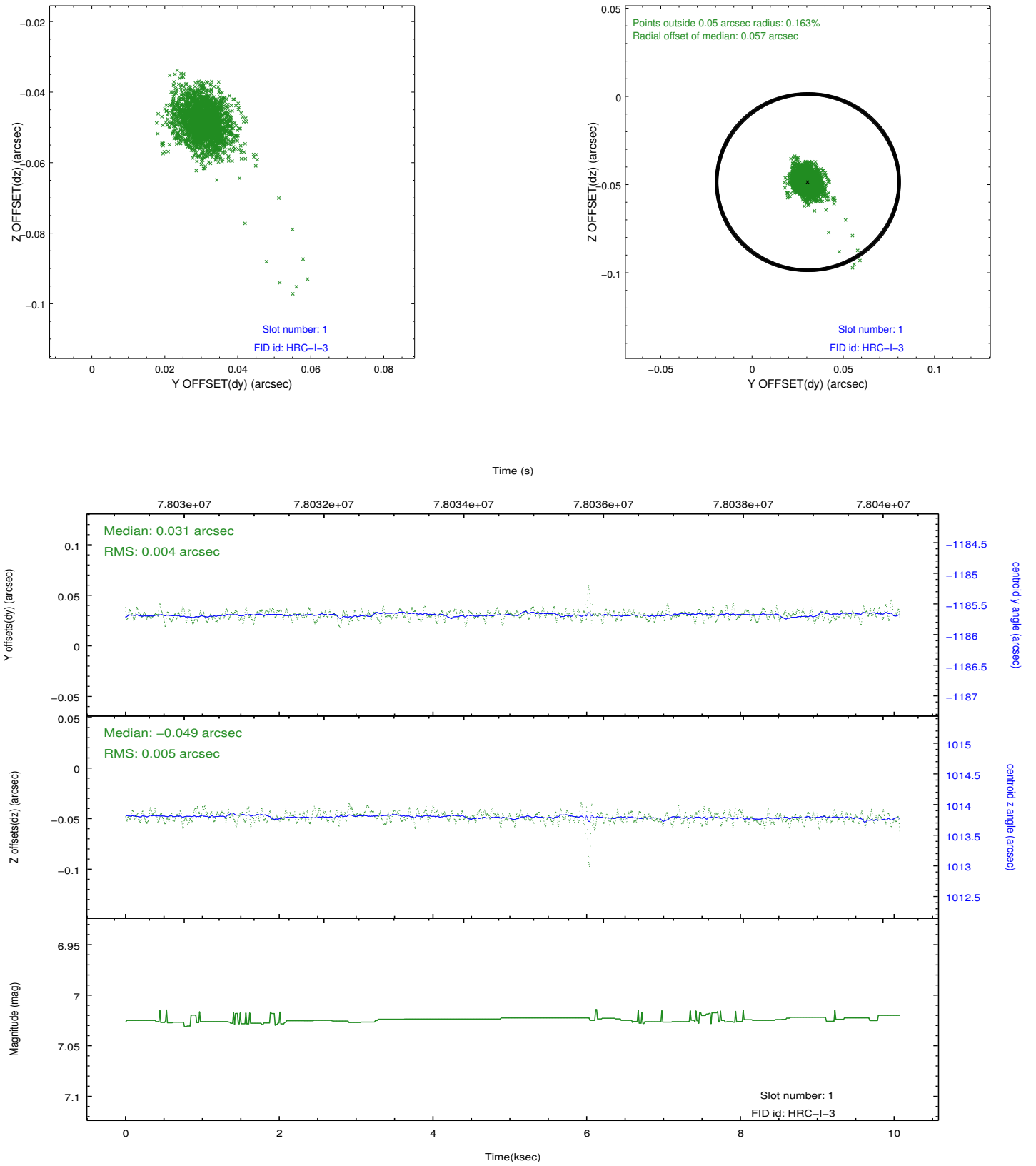


## 2.5 FID Slots

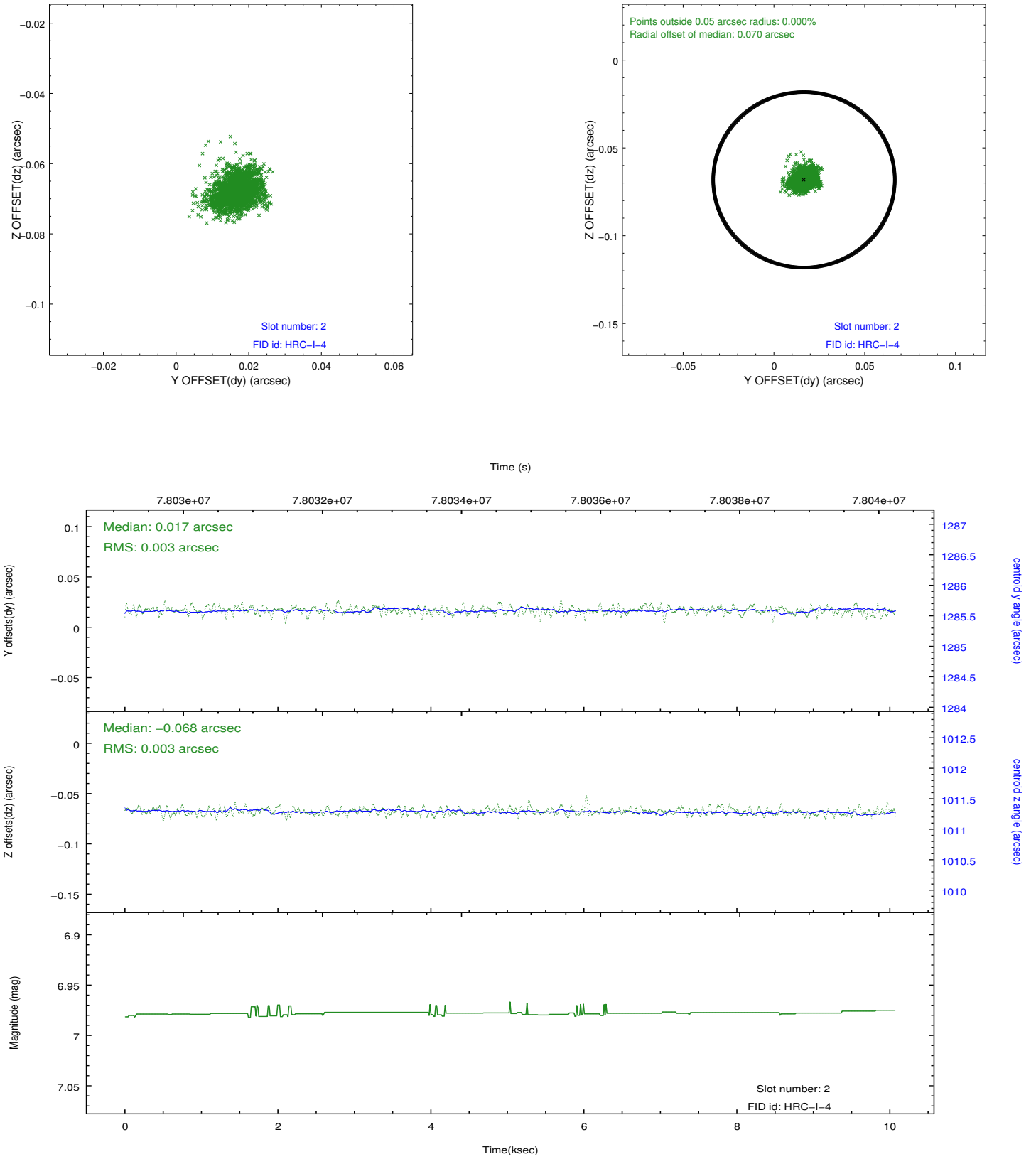
### 2.5.1 Slot 0



## 2.5.2 Slot 1



### 2.5.3 Slot 2



## A Summary

### A.1 Status

V&V Scientist	Jen Lauer
V&V Date (YYYY-MM-DD)	2012.08.31
V&V Edition	1
V&V Disposition and Status	OK
V&V Charge Time	10.073

### A.2 Comments