

V&V Reference Report

L2 ASCDS Version : 8.2.1

Observation 1193 - L2 Version 3

Chandra X-Ray Center

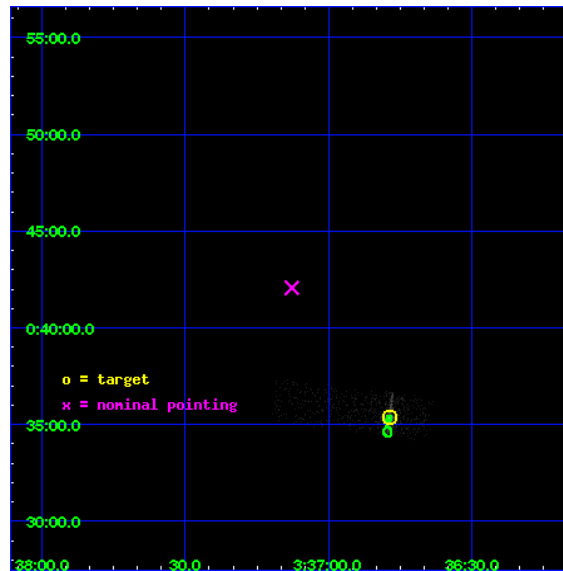
L2 Processing Date : Jan 13 2010

Contents

1	Front	2
2	OBI	3
2.1	OBI	3
2.1.1	Images	3
2.1.2	Bias	3
2.1.3	Parameters	4
2.1.4	Events	4
2.2	Compared Parameters	5
2.3	Aspect	6
2.4	Star Slots	9
2.4.1	Slot 3	9
2.4.2	Slot 4	10
2.4.3	Slot 5	11
2.4.4	Slot 6	12
2.4.5	Slot 7	13
2.5	FID Slots	14
2.5.1	Slot 0	14
2.5.2	Slot 1	15
2.5.3	Slot 2	16
3	Point Sources	17
A	Summary	18
A.1	Status	18
A.2	Comments	18

1 Front

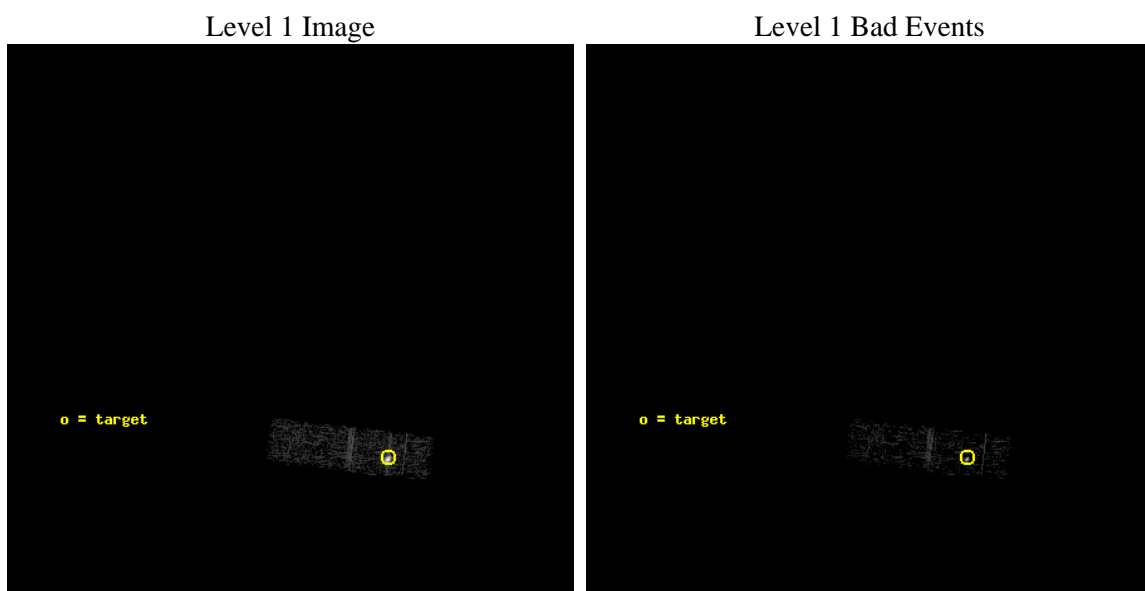
seq_num	280143	Sequence number
obs_id	1193	Observation id
title	 	Proposal title
observer	Dr. CXC Calibration	Principal investigator
object	HR1099	Source name
dtcycle	0	
cycle	P	events from which exps? Prim/Second/Both
ra_targ	54.197083	Observer's specified target RA
dec_targ	0.589972	Observer's specified target Dec
ra_nom	54.282020563343	Nominal RA
dec_nom	0.70105047796015	Nominal Dec
roll_nom	96.959244768707	Nominal Roll
revision	3	Processing version of data
ontime	1944.6210842356	Sum of GTIs [s]
livetime	1849.7299383959	Livetime [s]
ontime3	1944.6210842356	Sum of GTIs [s]
l2events	19360	Number of level 2 events



2 OBI

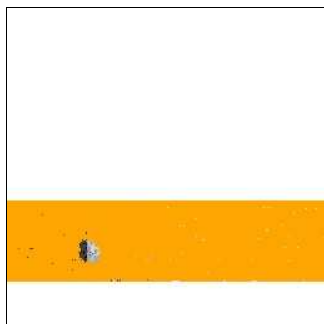
2.1 OBI

2.1.1 Images



2.1.2 Bias

Chip 3



2.1.3 Parameters

obi_num	0	Obi number	sched_exp_time	2000.000000	Scheduled observation exposure time
ascdsver	8.2.1	ASCDS version number	ontime	1944.6210842356	Sum of GTIs [s]
caldbver	4.1.5	 	ontime3	1944.6210842356	Sum of GTIs [s]
date	2010-01-13T07:22:56	Date and time of file creation	l1events	29257	Number of level 1 events
revision	3	Processing version of data			

2.1.4 Events

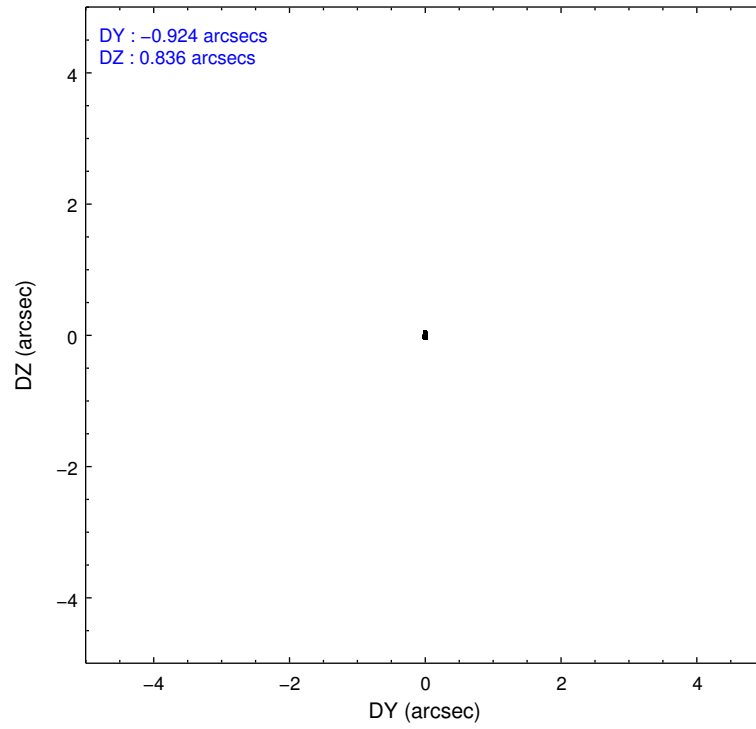
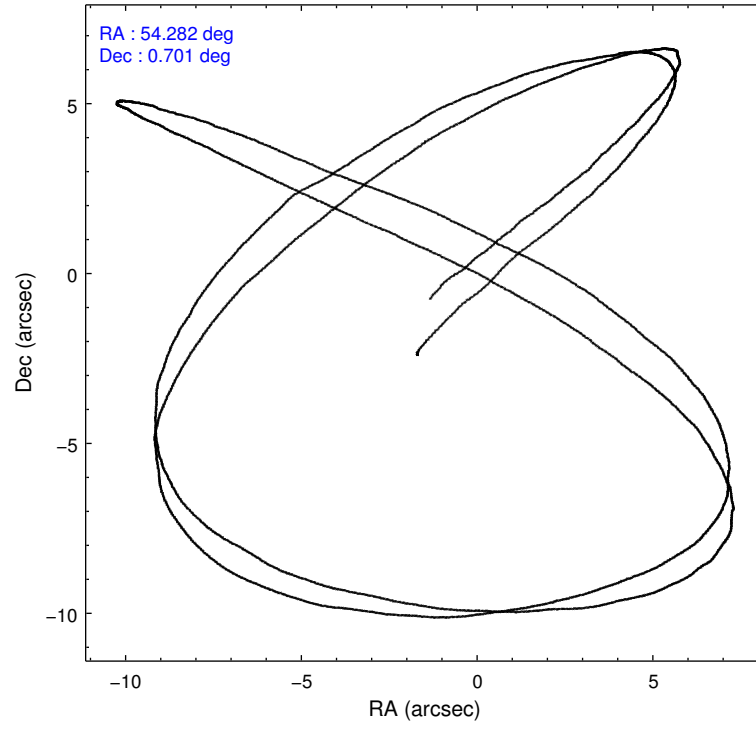
	ccd 3
level 1 events	29257
rejected events	8774
rejected %	29%

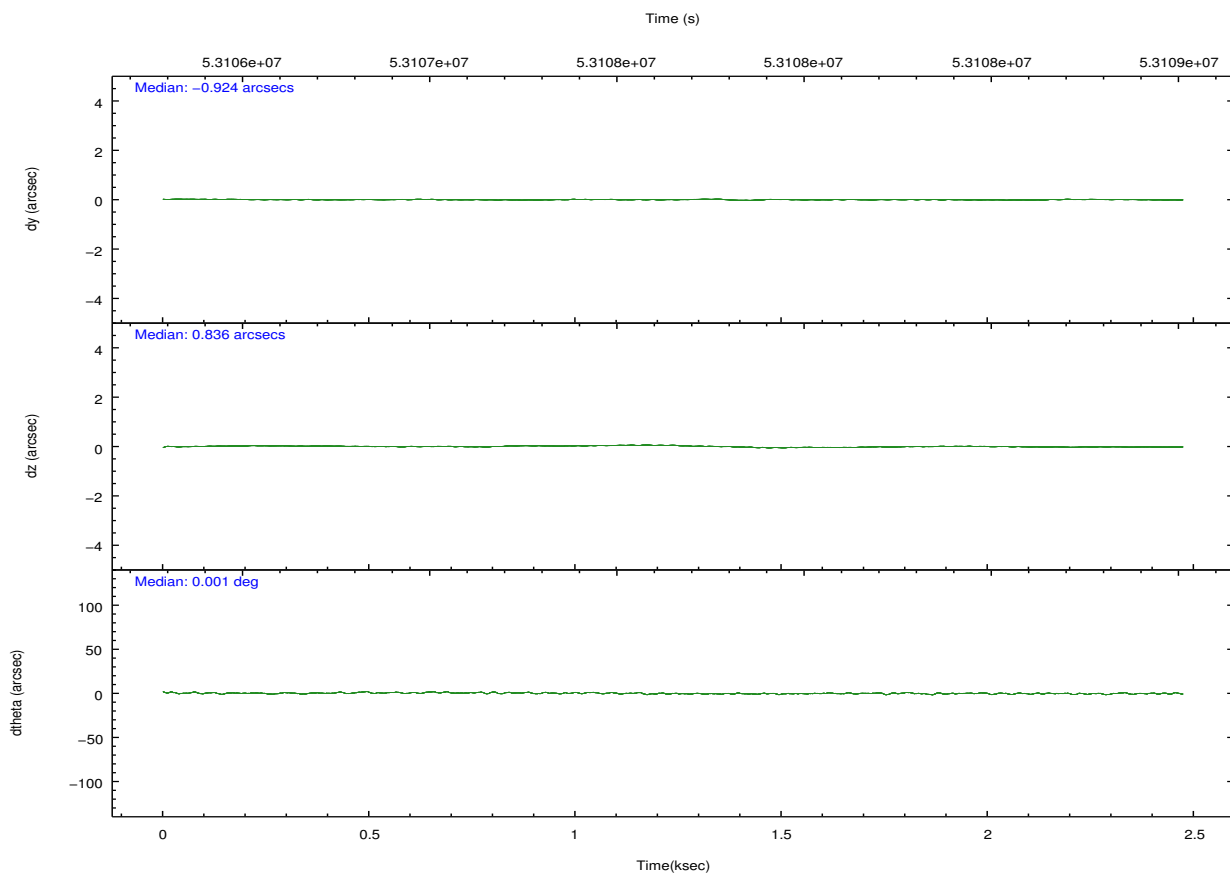
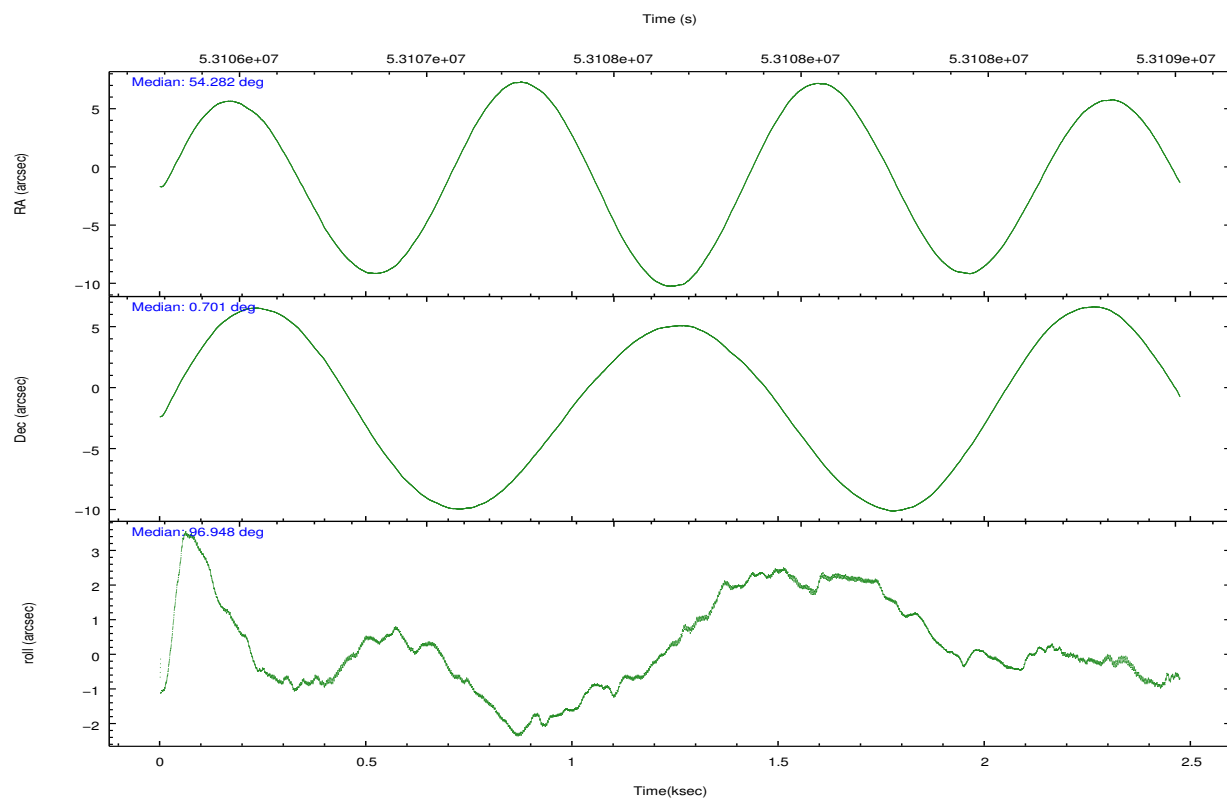
	ccd 3
grade 0 events	15862
	54%
grade 1 events	1280
	4%
grade 2 events	2406
	8%
grade 3 events	887
	3%
grade 4 events	811
	2%
grade 5 events	612
	2%
grade 6 events	539
	1%
grade 7 events	6860
	23%

2.2 Compared Parameters

Parameter	Planned	Actual	Parameter	Planned	Actual
Instrument	ACIS	ACIS	Obspar format version number	6	6
Detector	ACIS-3	ACIS-3	Obspar file type	PREDICTED	ACTUAL
Grating	NONE	NONE	Obspar update status	NONE	UPDATED
Data mode	FAINT_BIAS	FAINT_BIAS	Number of optional ACIS chips dropped	0	0
Observation mode	POINTING	POINTING	On-chip summing requested	N	N
Pointing RA	54.298089	54.28202056334264	Subarray requested	CUSTOM	1/4
Pointing Dec	0.678125	0.7010504779601494	Subarray start row	152	152
Pointing Roll	96.750352	96.95924476870682	Subarray row count	256	256
SIM focus pos (mm)	-0.782348	-0.7809083437167272	Alternating exposures requested	N	N
SIM defocus (mm)	0	0.001439871863259334	Primary exposure time	0.000000	0.8
SIM translation stage pos (mm)	-233.592463	-233.5874344608287			
SIM translation stage offset (mm)	0	-0.005018542100998502			
Observation start time	53106887.184000	53106220.820474			
Observation start date	1999-09-07T15:53:43	1999-09-07T15:43:40			
Observation end time	53108887.184000	53109020.608074			
Observation end date	1999-09-07T16:27:03	1999-09-07T16:30:20			
Read mode	TIMED	TIMED			

2.3 Aspect



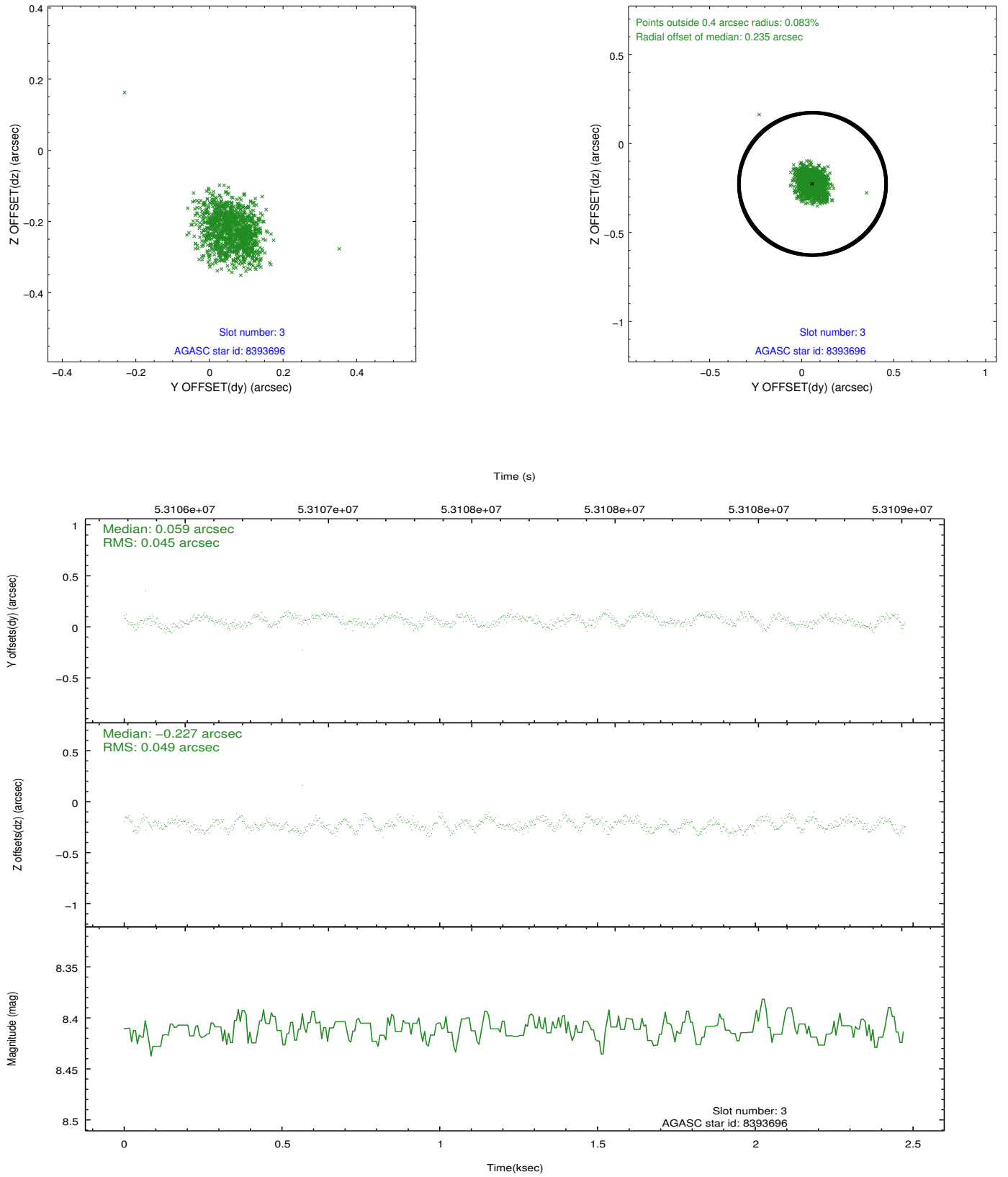


Slot Statistics

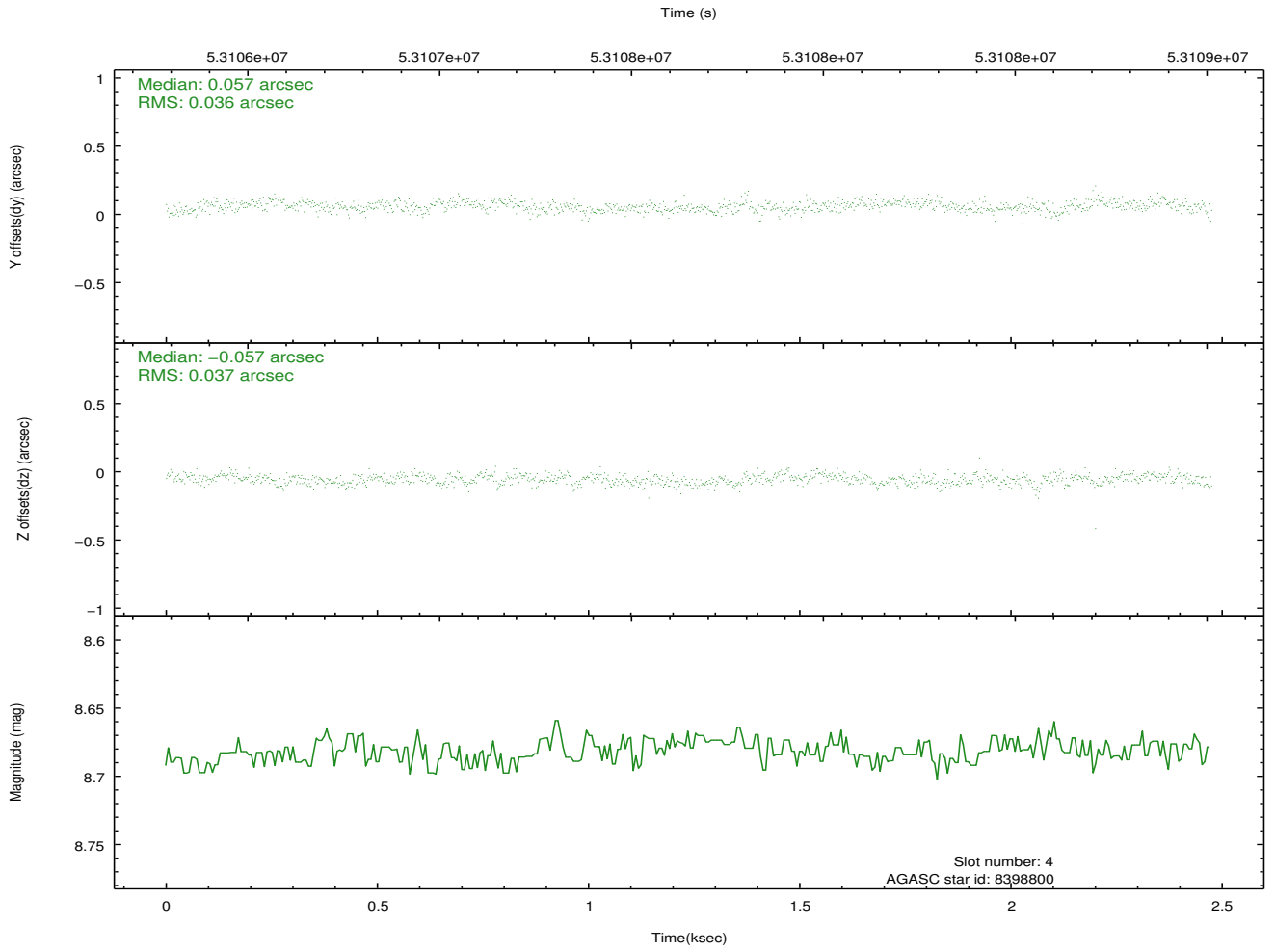
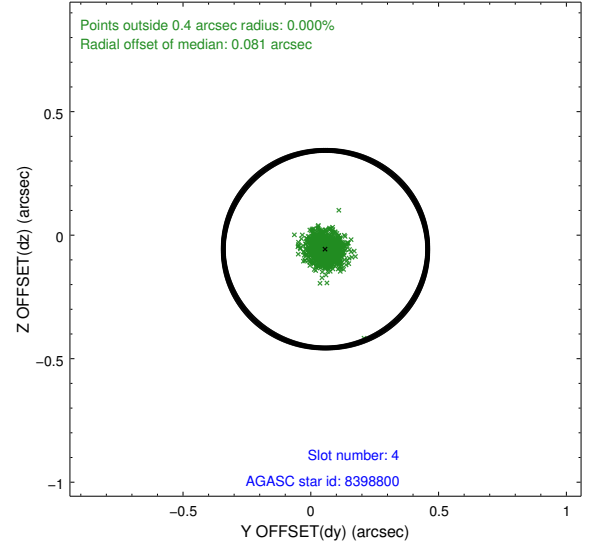
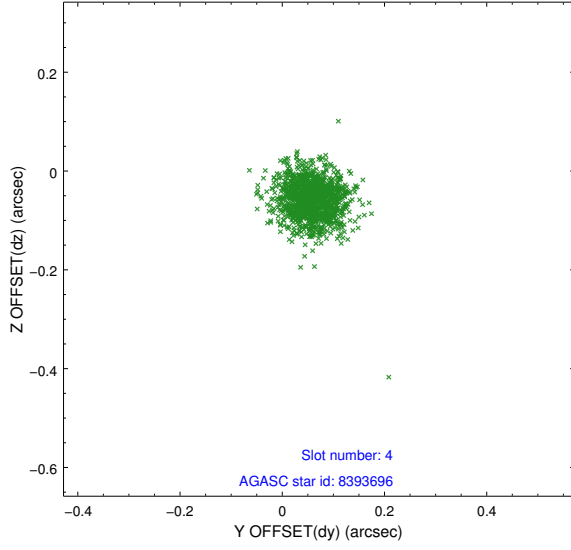
slot	status	id	mag	n_pts	med_dy	med_dz	dr1	dr2	ra	dec	mean_y	mean_z
0	FID	ACIS-I-2	7.22	1208	-0.043	0.038	0.009	0.015	0.000000	0.000000	-753.44	-830.34
1	FID	ACIS-I-4	7.23	1208	0.124	0.022	0.006	0.011	0.000000	0.000000	2160.35	1075.03
2	FID	ACIS-I-5	7.23	1208	-0.183	0.009	0.009	0.014	0.000000	0.000000	-1805.70	1074.50
3	GUIDE	8393696	8.41	1208	0.059	-0.227	0.070	0.109	53.645666	0.680479	283.67	2332.13
4	GUIDE	8398800	8.68	1208	0.057	-0.057	0.053	0.087	54.242352	0.922024	895.23	99.11
5	GUIDE	8390744	9.02	1208	-0.031	-0.135	0.101	0.149	53.677290	0.926294	1149.78	2115.31
6	GUIDE	8395104	8.65	1207	0.035	0.174	0.063	0.098	54.744893	0.796520	235.05	-1644.27
7	GUIDE	8397624	9.53	1206	-0.120	0.246	0.102	0.165	54.812881	1.297049	1995.01	-2101.65

2.4 Star Slots

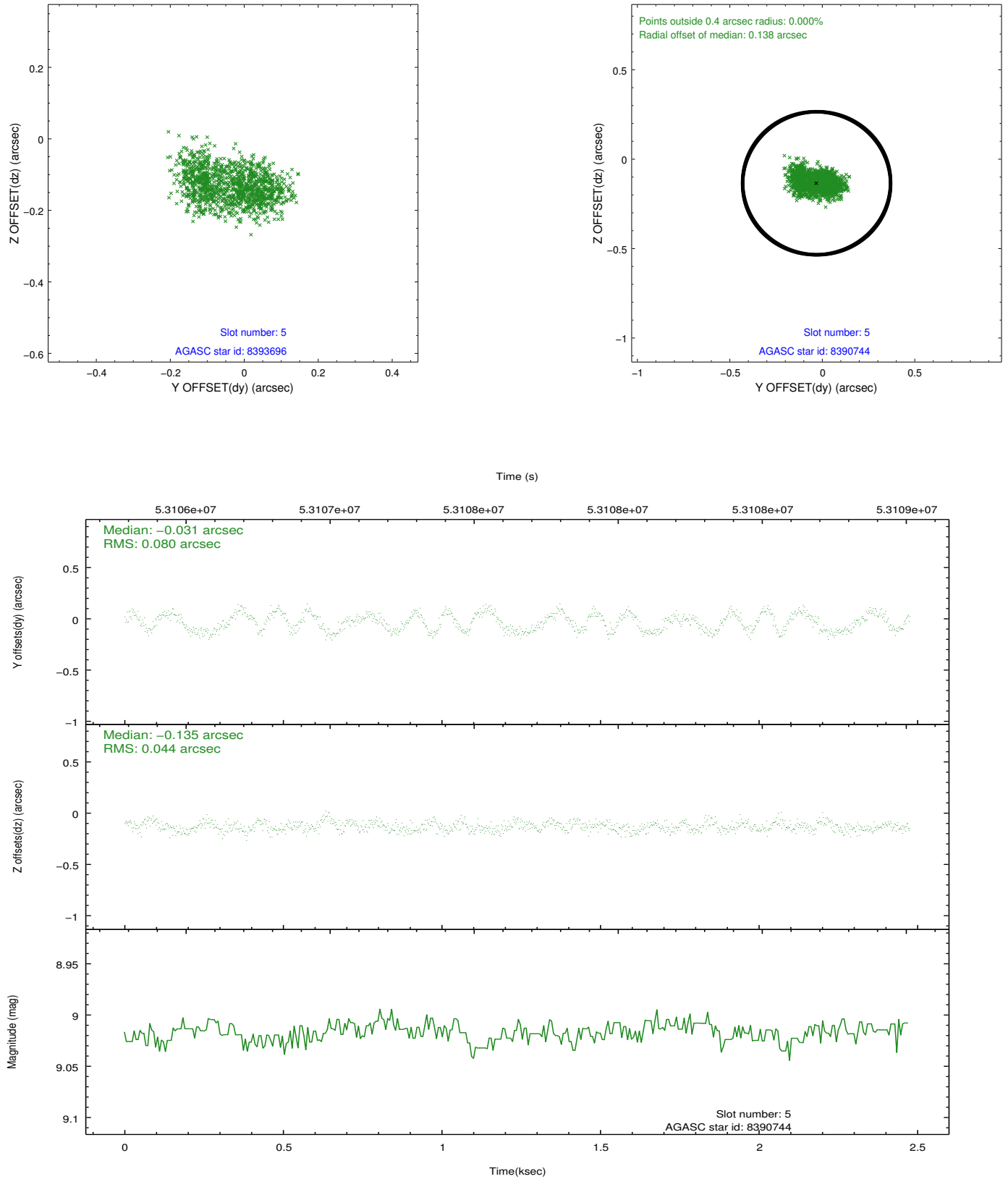
2.4.1 Slot 3



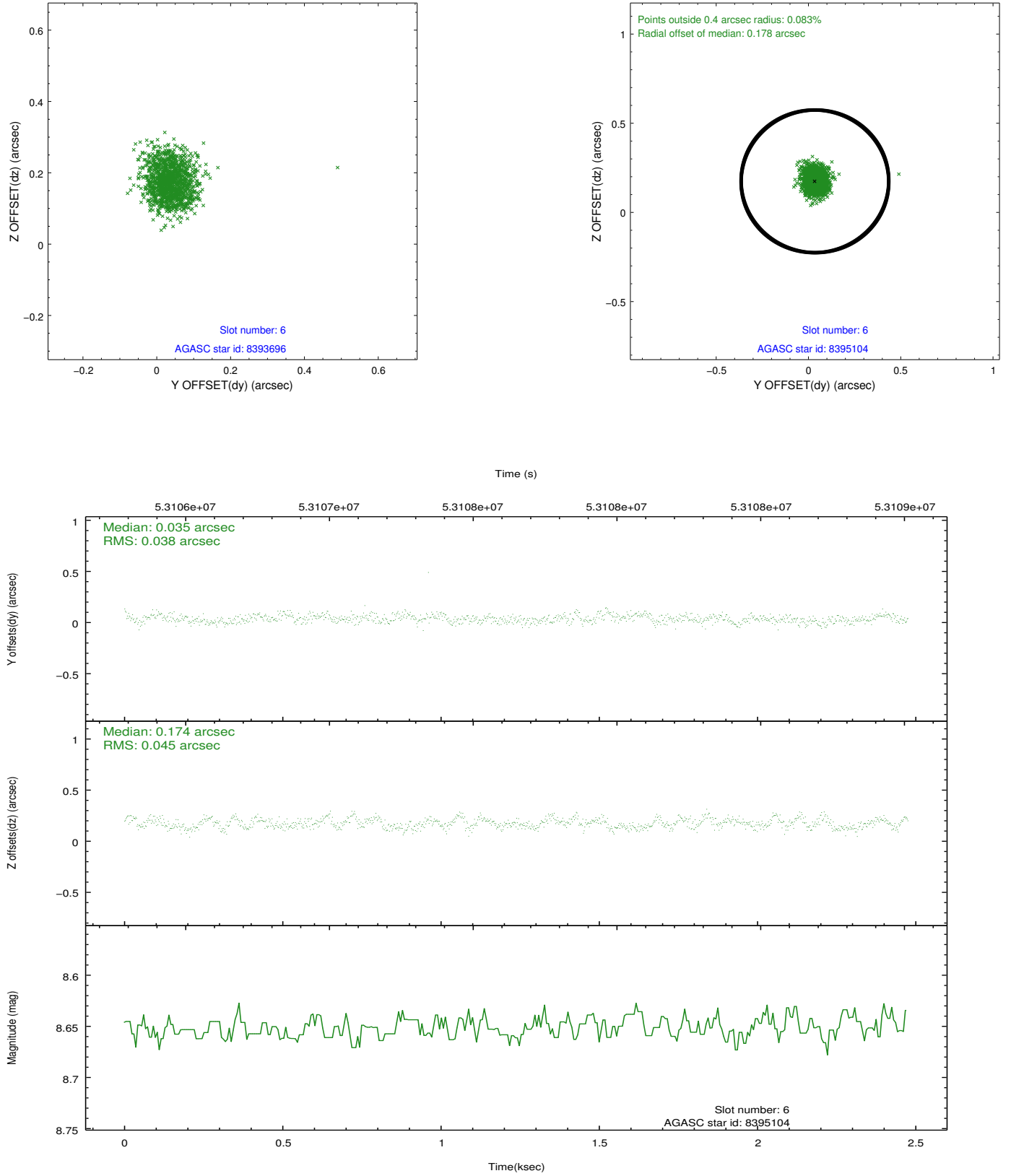
2.4.2 Slot 4



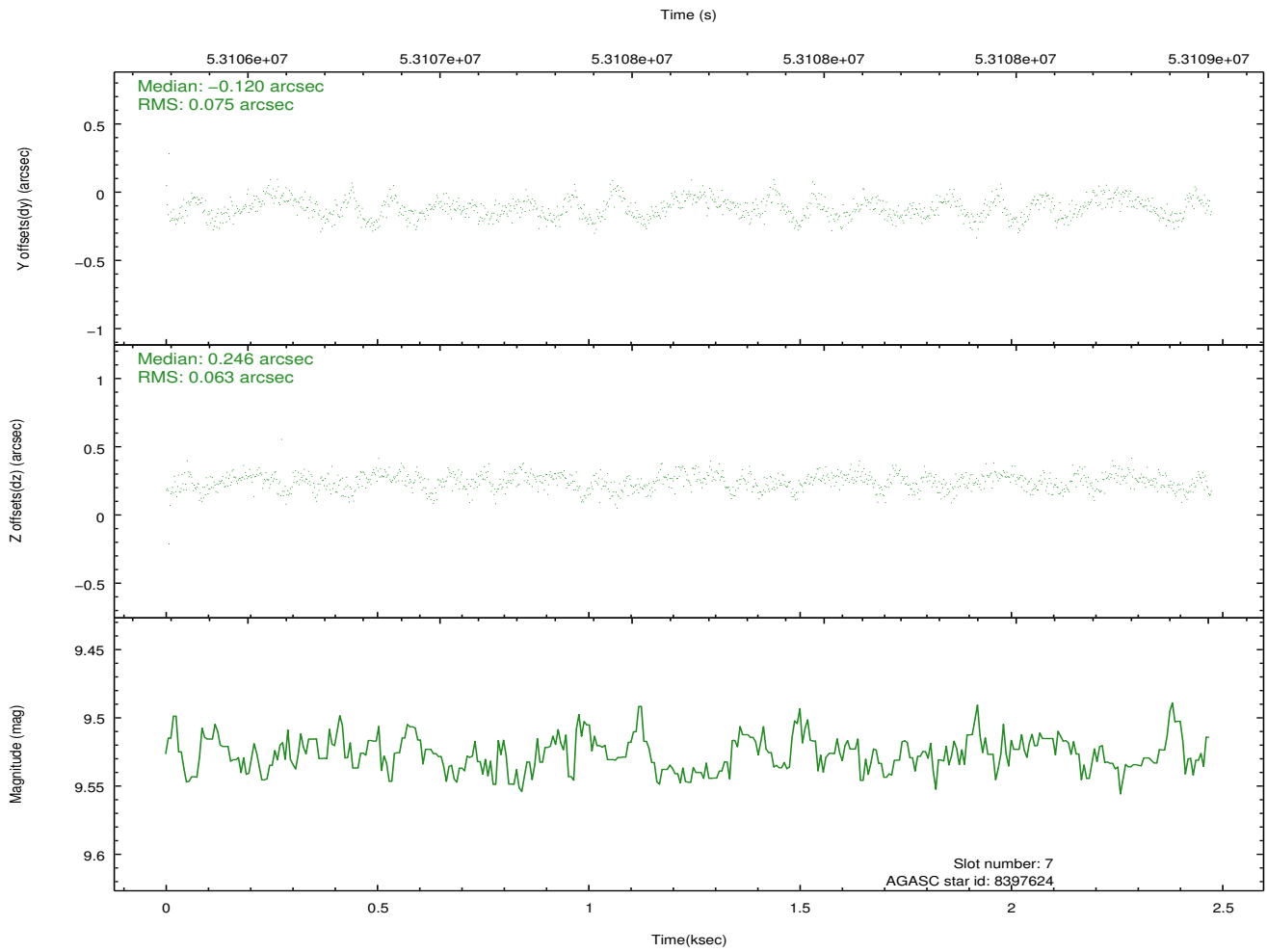
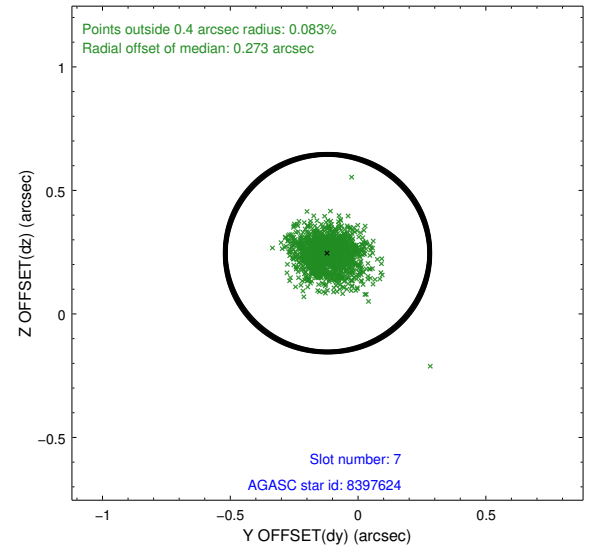
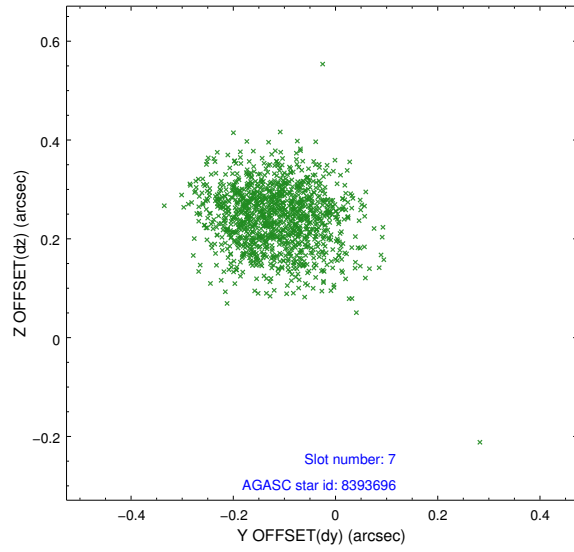
2.4.3 Slot 5



2.4.4 Slot 6

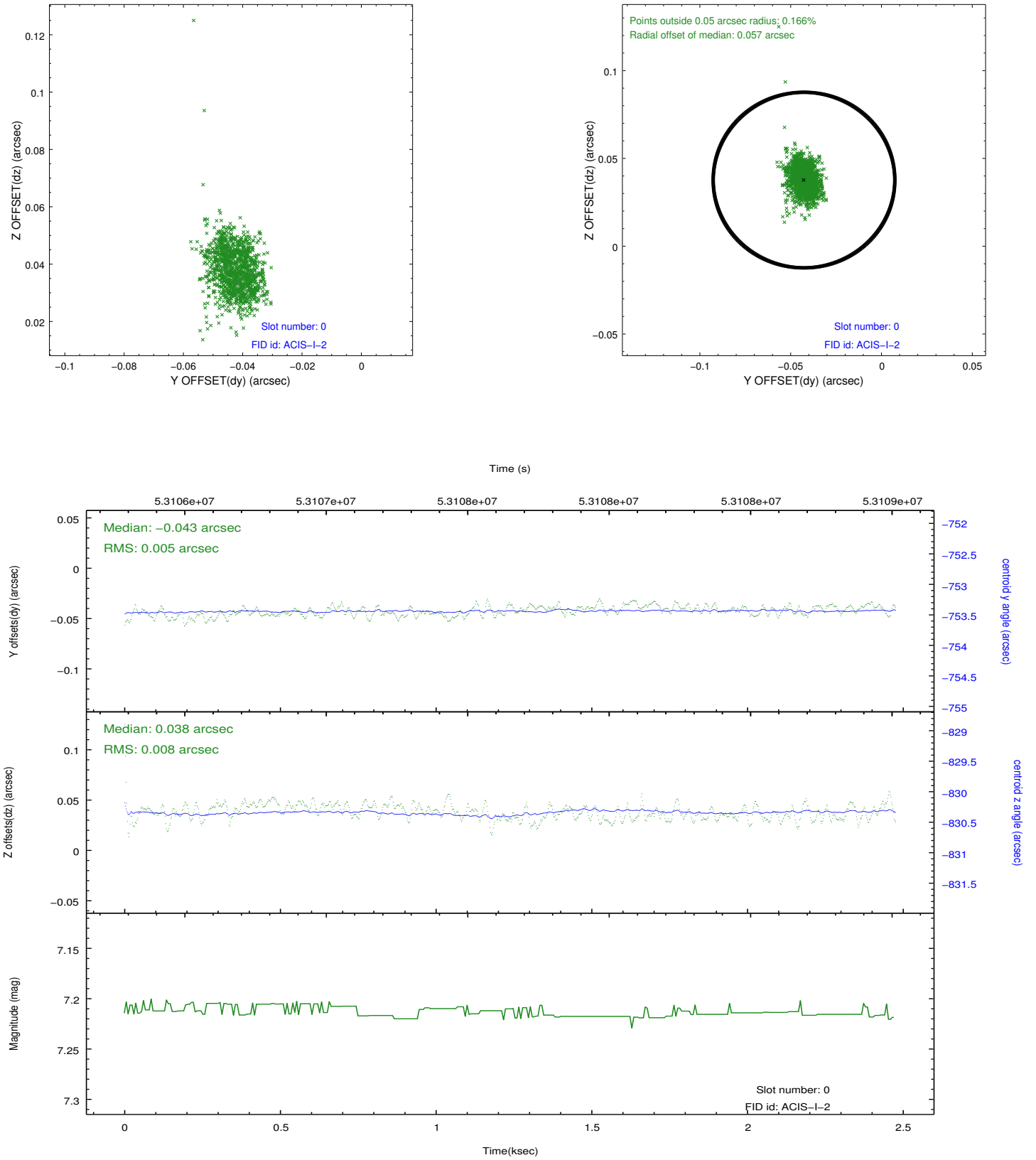


2.4.5 Slot 7

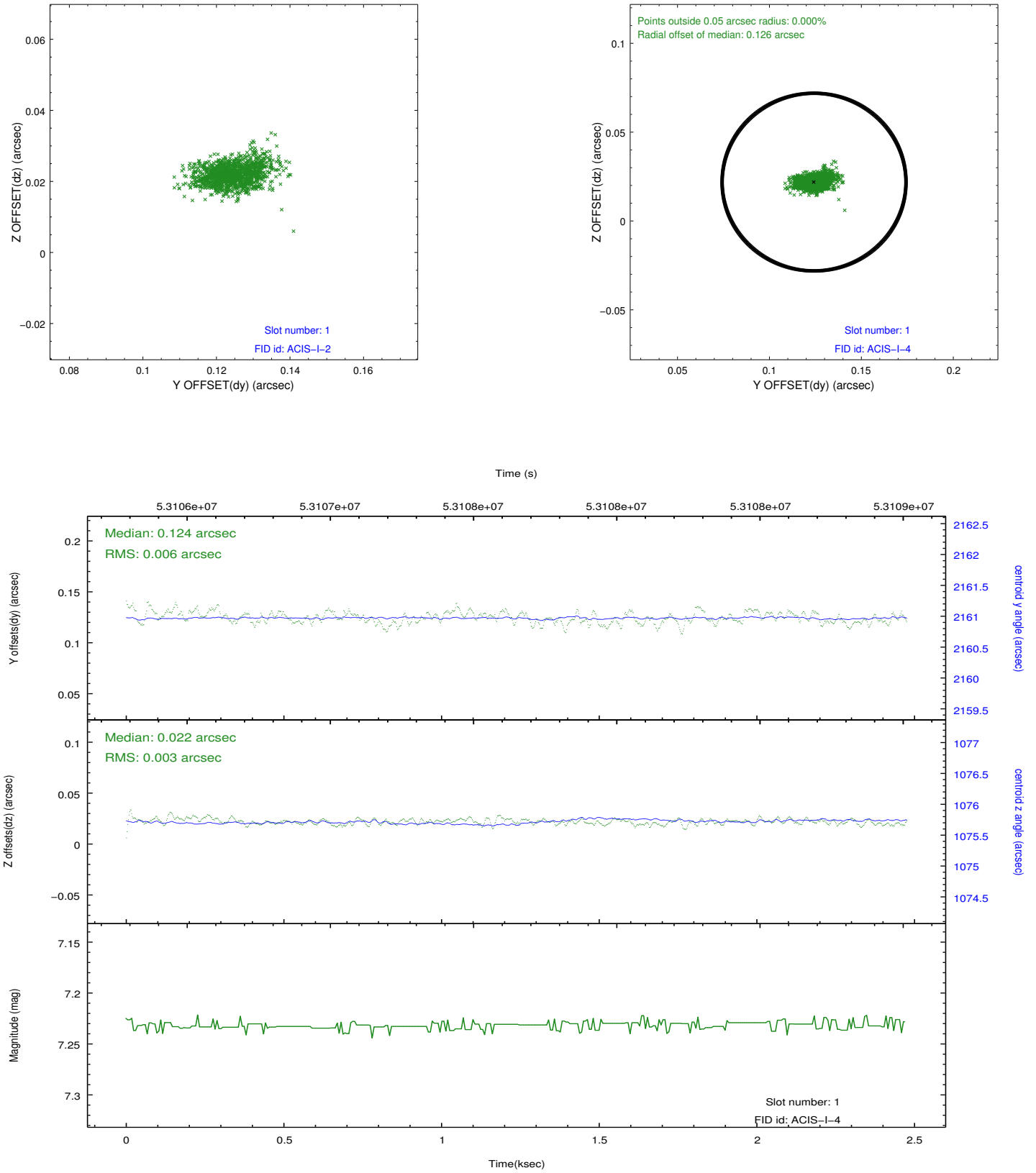


2.5 FID Slots

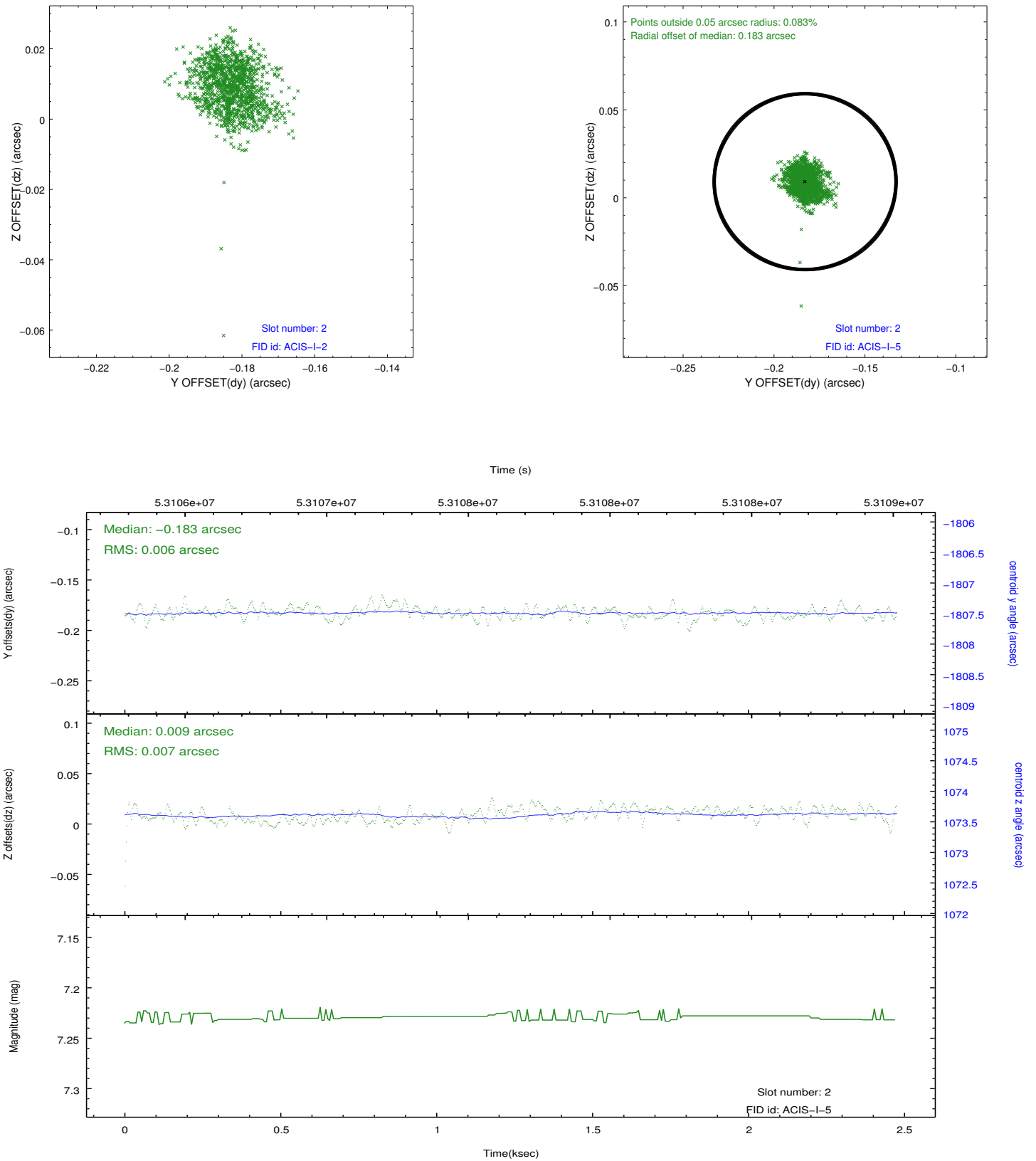
2.5.1 Slot 0



2.5.2 Slot 1

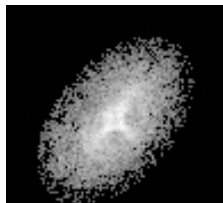


2.5.3 Slot 2



3 Point Sources

8.49 arcmin



A Summary

A.1 Status

V&V Scientist	Joy Nichols
V&V Date (YYYY-MM-DD)	2010.08.17
V&V Edition	1
V&V Disposition and Status	OK
V&V Charge Time	1.944

A.2 Comments

ACIS very off-axis PSF measurement on I3.

===

The focal plane temperature is approximately -100 C during this observation. This reprocessing of the data applies no CTI correction because none is available for this temperature at present.

The ACIS CTI correction has not been calibrated at this temperature, because it was early in the mission, and ACIS had not yet been lowered to the standard -119.7 C. Both front and back illuminated chips are affected. However a T_GAIN correction has been applied to the BI chips (ACIS-5 and ACIS-7) data included here.

The ACIS spectral response calibration is less accurate at these warmer temperatures than it is at -119.7 C. Users whose science objectives depend on the most accurate spectral response (ie: fitting line-rich spectra) may notice an effect. Users whose science objectives do not depend on the most accurate spectral response should not notice an effect.