

V&V Reference Report

L2 ASCDS Version : 8.4.4

Observation 9249 - L2 Version 2
Chandra X-Ray Center

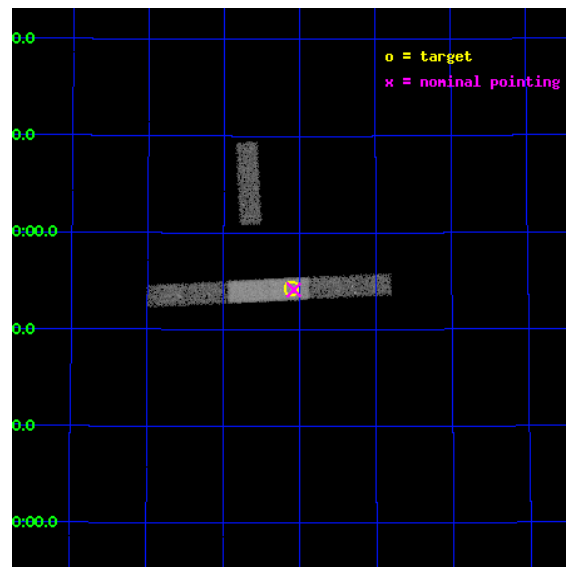
L2 Processing Date : May 8 2012

Contents

1	Front	2
2	OBI	3
2.1	OBI	3
2.1.1	Images	3
2.1.2	Bias	3
2.1.3	Parameters	4
2.1.4	Events	4
2.2	Compared Parameters	5
2.3	Aspect	6
2.4	Star Slots	9
2.4.1	Slot 3	9
2.4.2	Slot 4	10
2.4.3	Slot 5	11
2.4.4	Slot 6	12
2.4.5	Slot 7	13
2.5	FID Slots	14
2.5.1	Slot 0	14
2.5.2	Slot 1	15
2.5.3	Slot 2	16
A	Summary	17
A.1	Status	17
A.2	Comments	17

1 Front

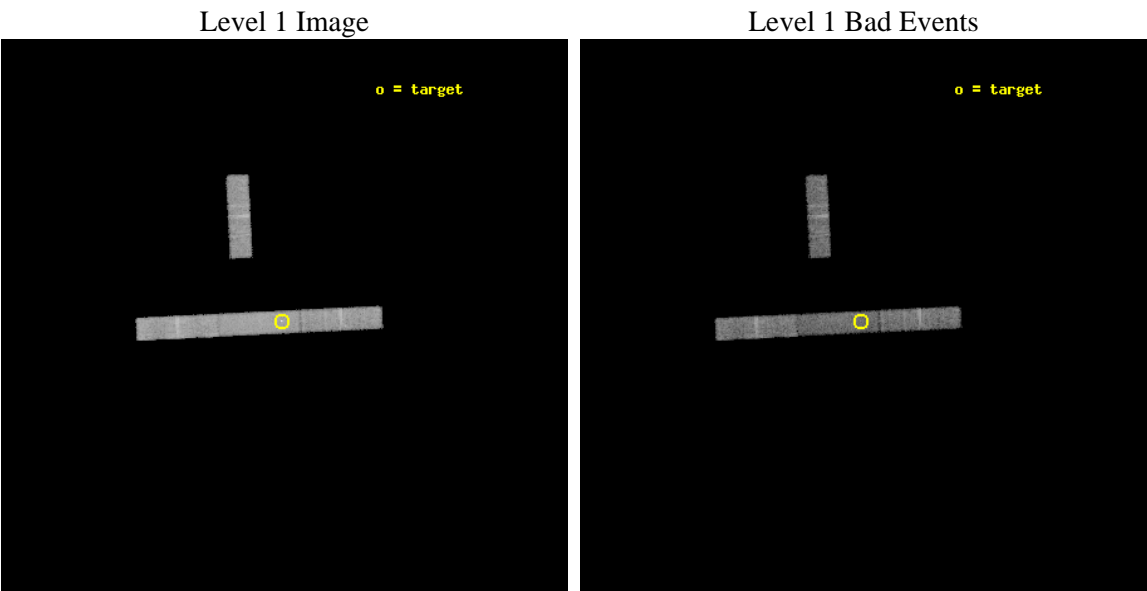
seq_num	701690	Sequence number
obs_id	9249	Observation id
title	Orientation effects in the X-ray and multi-wavelength properties of high-z, 3CRR quasars.	Proposal title
observer	Dr. Belinda Wilkes	Principal investigator
object	3CRR 205	Source name
dtcycle	0	
cycle	P	events from which exps? Prim/Second/Both
ra_targ	129.777083	Observer's specified target RA [deg]
dec_targ	57.904583	Observer's specified target Dec [deg]
ra_nom	129.7690494873	Nominal RA [deg]
dec_nom	57.902201450243	Nominal Dec [deg]
roll_nom	177.2062393155	Nominal Roll [deg]
revision	2	Processing version of data
ontime	10069.0	Sum of GTIs [s]
livetime	9672.0587105203	Livetime [s]
ontime3	10069.0	Sum of GTIs [s]
ontime6	10069.0	Sum of GTIs [s]
ontime7	10069.0	Sum of GTIs [s]
ontime8	10069.0	Sum of GTIs [s]
l2events	25010	Number of level 2 events



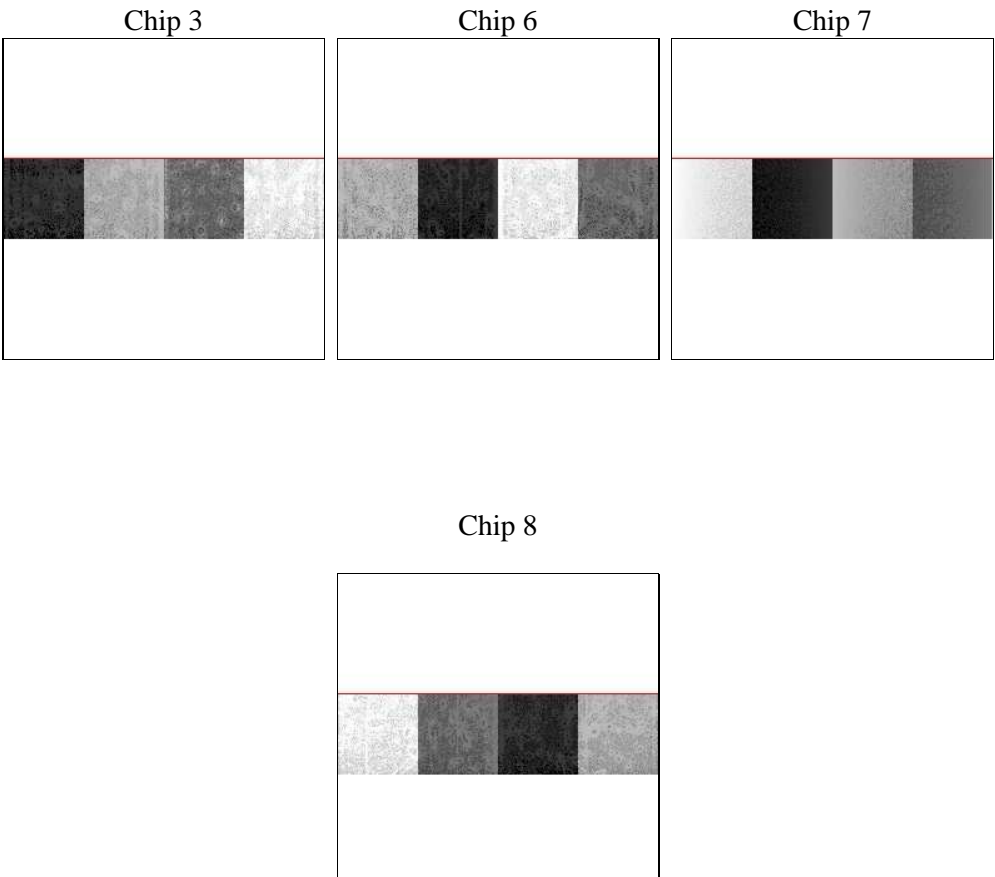
2 OBI

2.1 OBI

2.1.1 Images



2.1.2 Bias



Chip 8



2.1.3 Parameters

obi_num	0	Obi number	sched_exp_time	10000.000000	[s] Scheduled observation exposure time
ascdsver	8.4.4	Processing system revision	ontime	10069.0	Sum of GTIs [s]
caldsver	4.4.9	 	ontime3	10069.0	Sum of GTIs [s]
date	2012-05-08T14:45:07	Date and time of file creation	ontime6	10069.0	Sum of GTIs [s]
revision	2	Processing version of data	ontime7	10069.0	Sum of GTIs [s]
			ontime8	10069.0	Sum of GTIs [s]
			l1events	132587	Number of level 1 events

2.1.4 Events

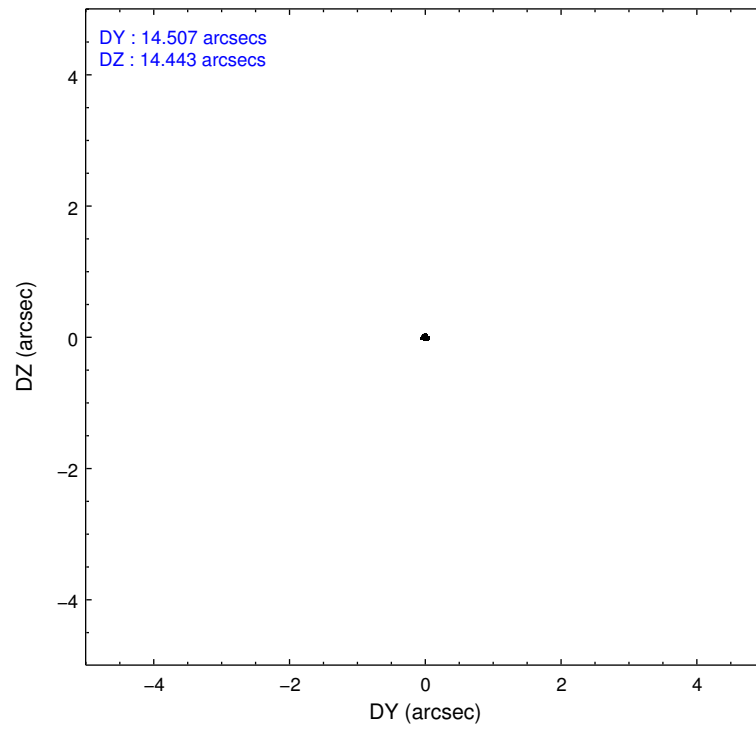
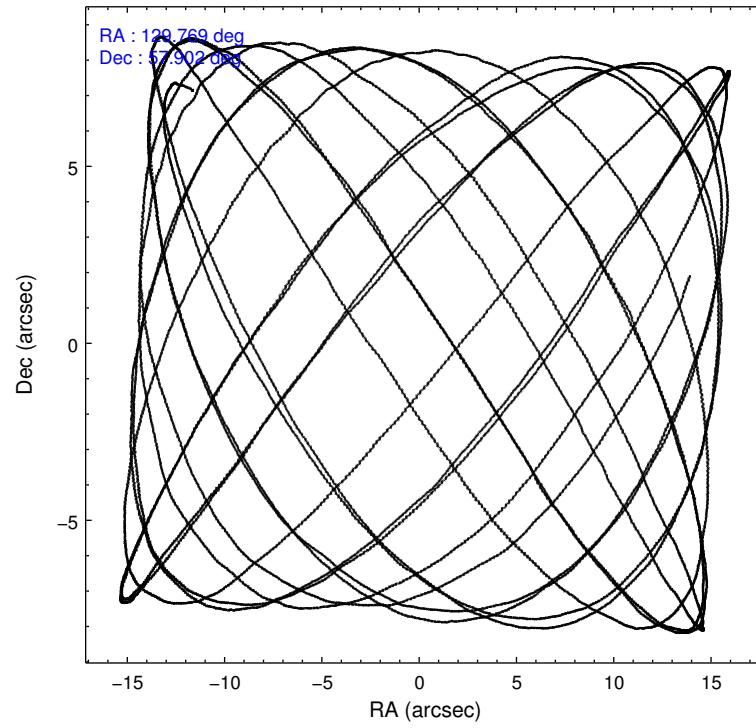
	ccd 3	ccd 6	ccd 7	ccd 8
level 1 events	27385	30083	36622	38497
rejected events	24014	26435	20206	30327
rejected %	87%	87%	55%	78%

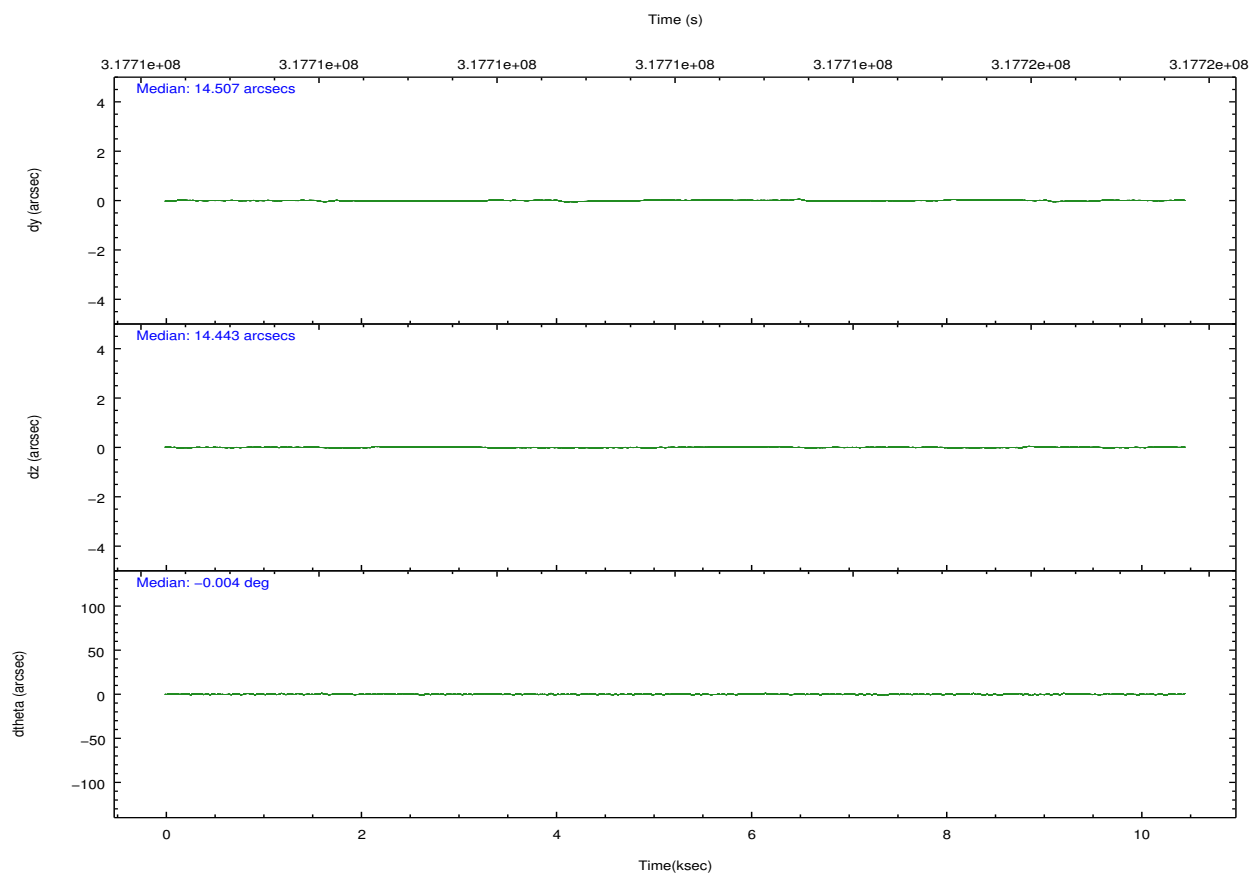
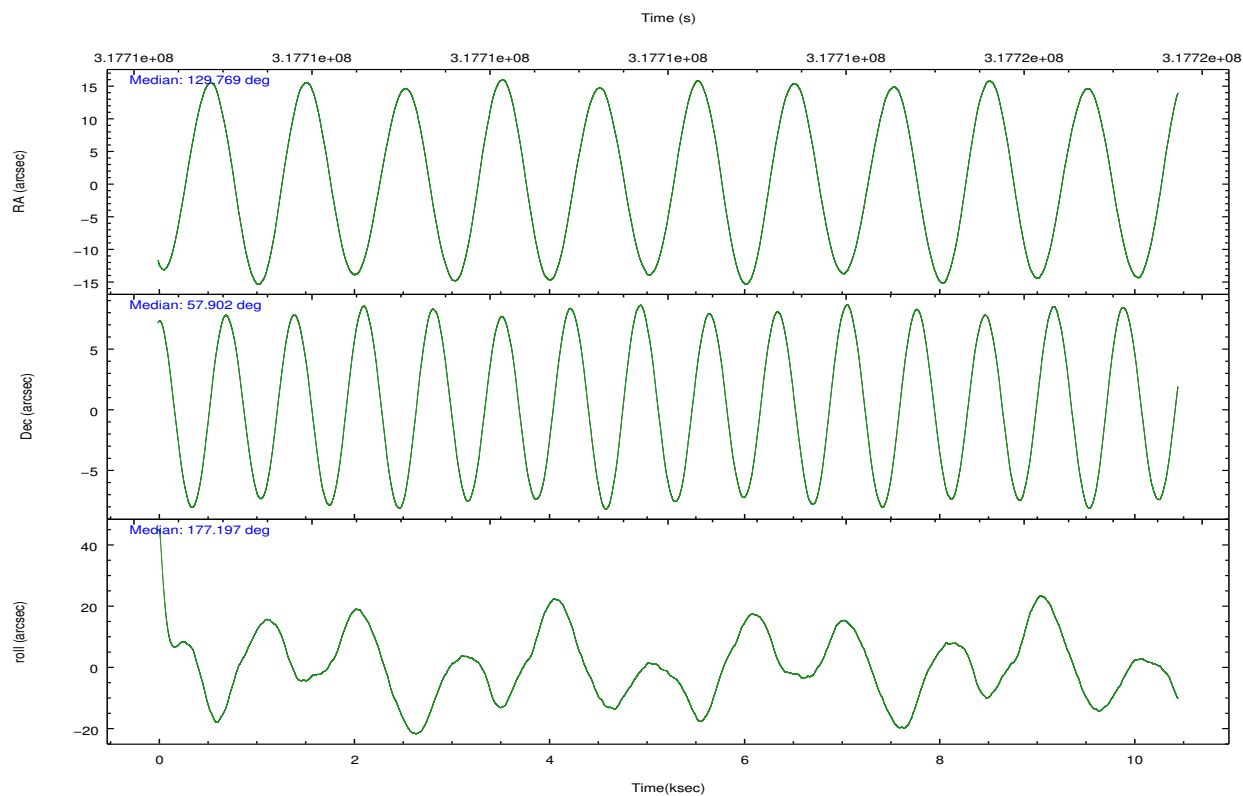
	ccd 3	ccd 6	ccd 7	ccd 8
grade 0 events	1312	1301	1750	2481
	4%	4%	4%	6%
grade 1 events	11	13	32	22
	0%	0%	0%	0%
grade 2 events	588	703	3430	1682
	2%	2%	9%	4%
grade 3 events	467	516	1641	917
	1%	1%	4%	2%
grade 4 events	489	470	1648	885
	1%	1%	4%	2%
grade 5 events	1185	1269	3312	1539
	4%	4%	9%	3%
grade 6 events	516	659	7948	2249
	1%	2%	21%	5%
grade 7 events	22817	25152	16861	28722
	83%	83%	46%	74%

2.2 Compared Parameters

Parameter	Planned	Actual	Parameter	Planned	Actual
Instrument	ACIS	ACIS	Obspar format version number	7	7
Detector	ACIS-3678	ACIS-3678	Obspar file type	PREDICTED	ACTUAL
Grating	NONE	NONE	Obspar update status	NONE	UPDATED
Data mode	FAINT	FAINT	CCD I0 on	N	N
Observation mode	POINTING	POINTING	CCD I1 on	N	N
[deg] Pointing RA	129.814542	129.7690494873025	CCD I2 on	N	N
[deg] Pointing Dec	57.915061	57.90220145024348	CCD I3 on	O1	Y
[deg] Pointing Roll	177.011074	177.2062393154984	CCD S0 on	N	N
[mm] SIM focus pos	-0.684267	-0.6828225247311905	CCD S1 on	N	N
[mm] SIM defocus	0	0.001444936568705701	CCD S2 on	O3	Y
[mm] SIM translation stage pos	-190.132523	-190.1400660498719	CCD S3 on	Y	Y
[mm] SIM translation stage offset	0	0.00754346686406393	CCD S4 on	O2	Y
[s] Observation start time (MET)	317707227.184000	317706424.95819	CCD S5 on	N	N
Observation start date	2008-01-26T03:59:22	2008-01-26T03:47:04	Number of optional ACIS chips dropped	0	0
[s] Observation end time (MET)	317717227.184000	317718122.25876	On-chip summing requested	N	N
Observation end date	2008-01-26T06:46:02	2008-01-26T07:02:02	Subarray requested	CUSTOM	1/4
Read mode	TIMED	TIMED	Subarray start row	385	385
			Subarray row count	256	256
			Alternating exposures requested	N	N
			[s] Primary exposure time	0.000000	1

2.3 Aspect



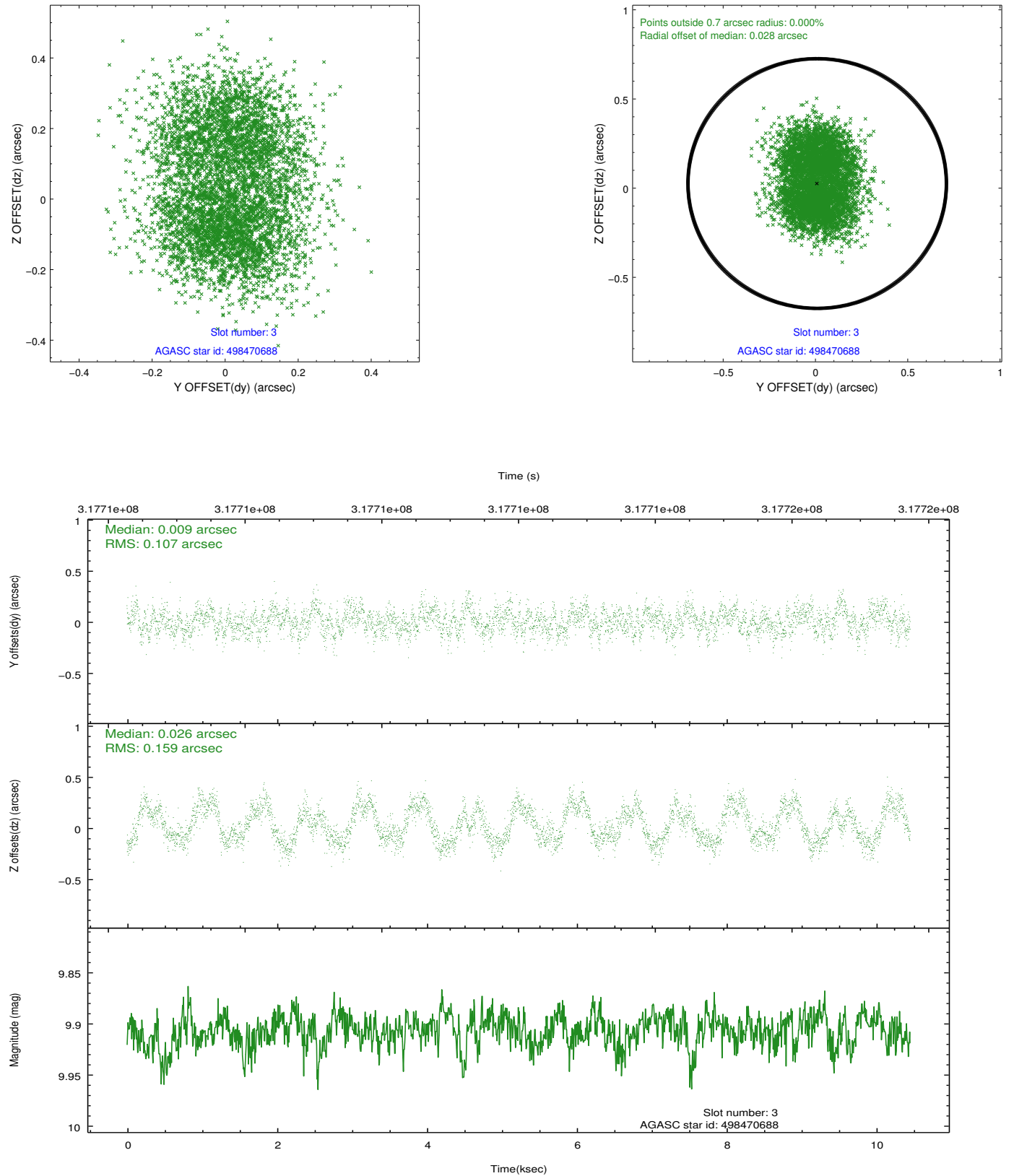


Slot Statistics

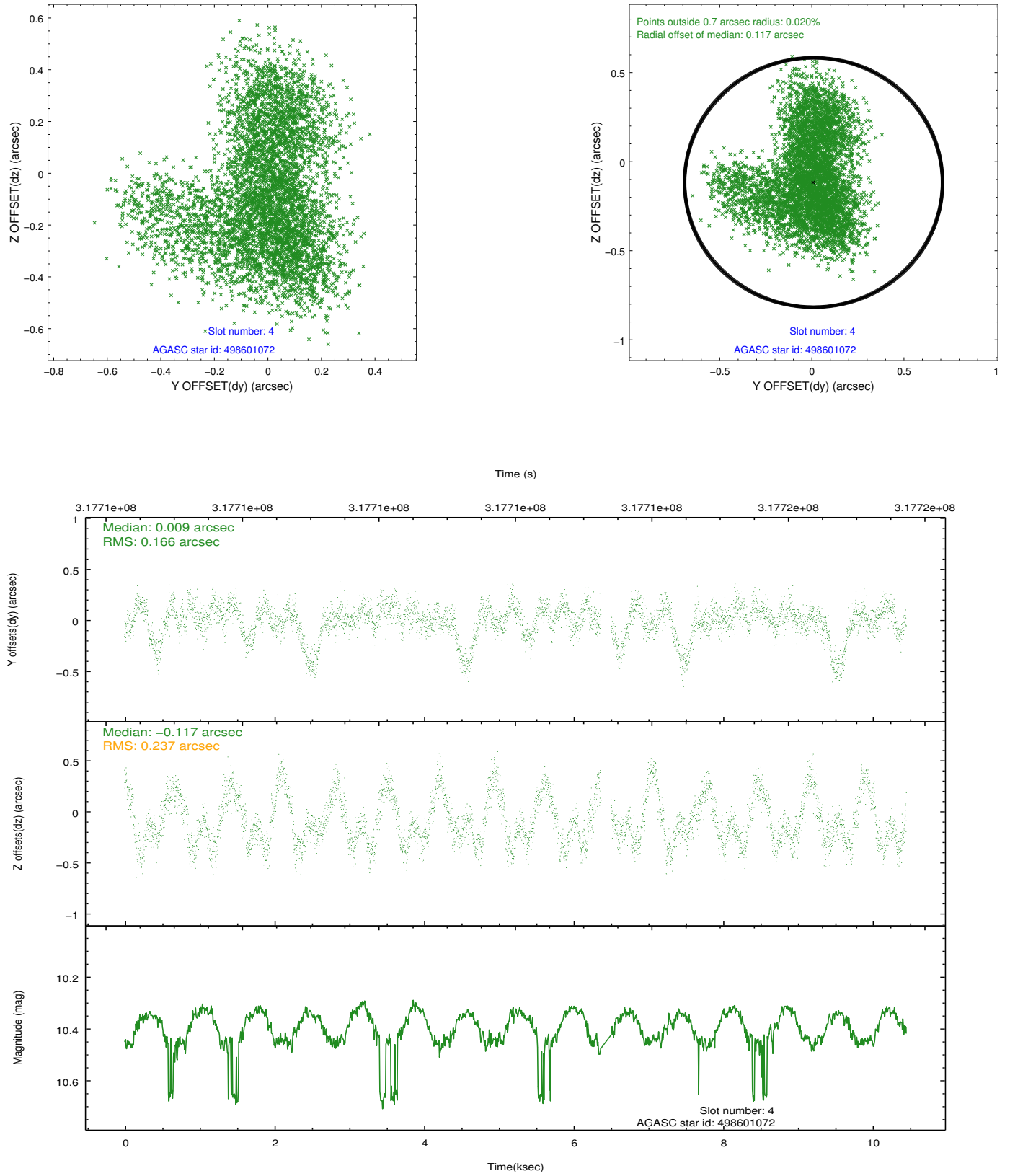
slot	status	id	mag	n_pts	med_dy	med_dz	dr1	dr2	ra	dec	mean_y	mean_z
0	FID	ACIS-S-2	7.10	2550	-0.088	-0.054	0.006	0.011	0.000000	0.000000	-767.54	-1735.86
1	FID	ACIS-S-4	7.19	2550	0.218	0.057	0.005	0.010	0.000000	0.000000	2145.80	172.22
2	FID	ACIS-S-5	7.22	2550	-0.161	0.006	0.006	0.011	0.000000	0.000000	-1819.82	166.40
3	GUIDE	498470688	9.91	5090	0.009	0.026	0.208	0.313	128.657141	58.471131	2281.40	-1904.01
4	GUIDE	498601072	10.40	4999	0.009	-0.117	0.318	0.497	129.897899	58.482745	-49.23	-2049.61
5	GUIDE	498601920	9.64	5095	0.010	-0.007	0.119	0.191	129.099984	58.590938	1466.95	-2366.87
6	GUIDE	498608776	10.11	5100	0.008	0.045	0.189	0.295	130.492312	57.511299	-1384.01	1376.13
7	GUIDE	498601992	8.55	5099	-0.018	0.024	0.101	0.170	129.242249	58.167063	1133.01	-853.00

2.4 Star Slots

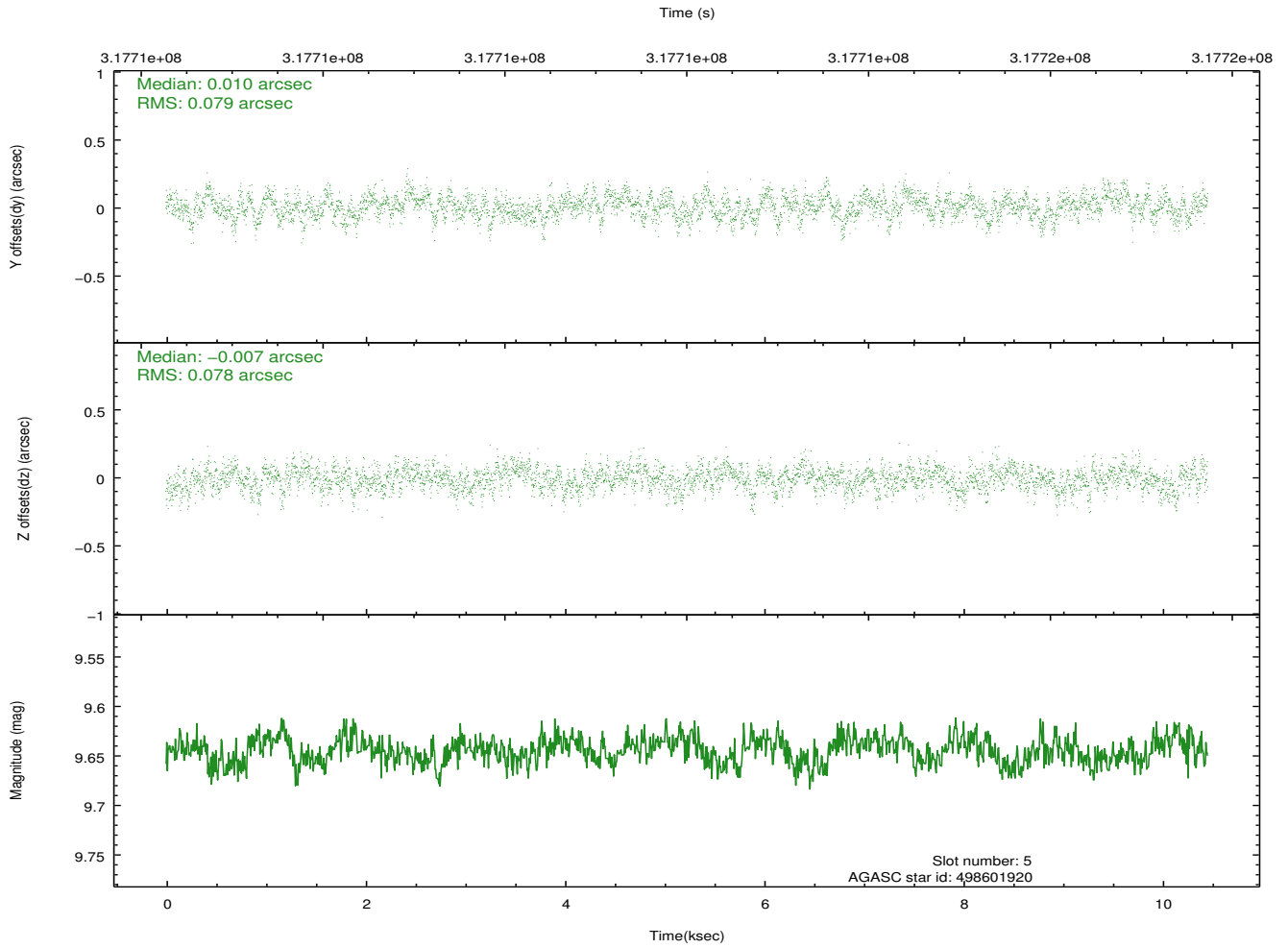
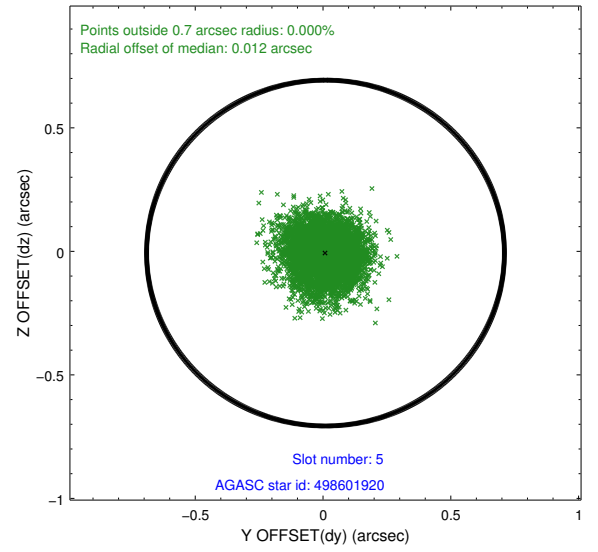
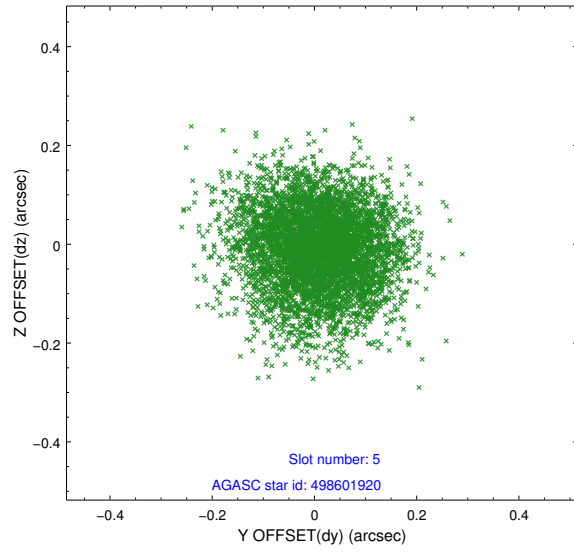
2.4.1 Slot 3



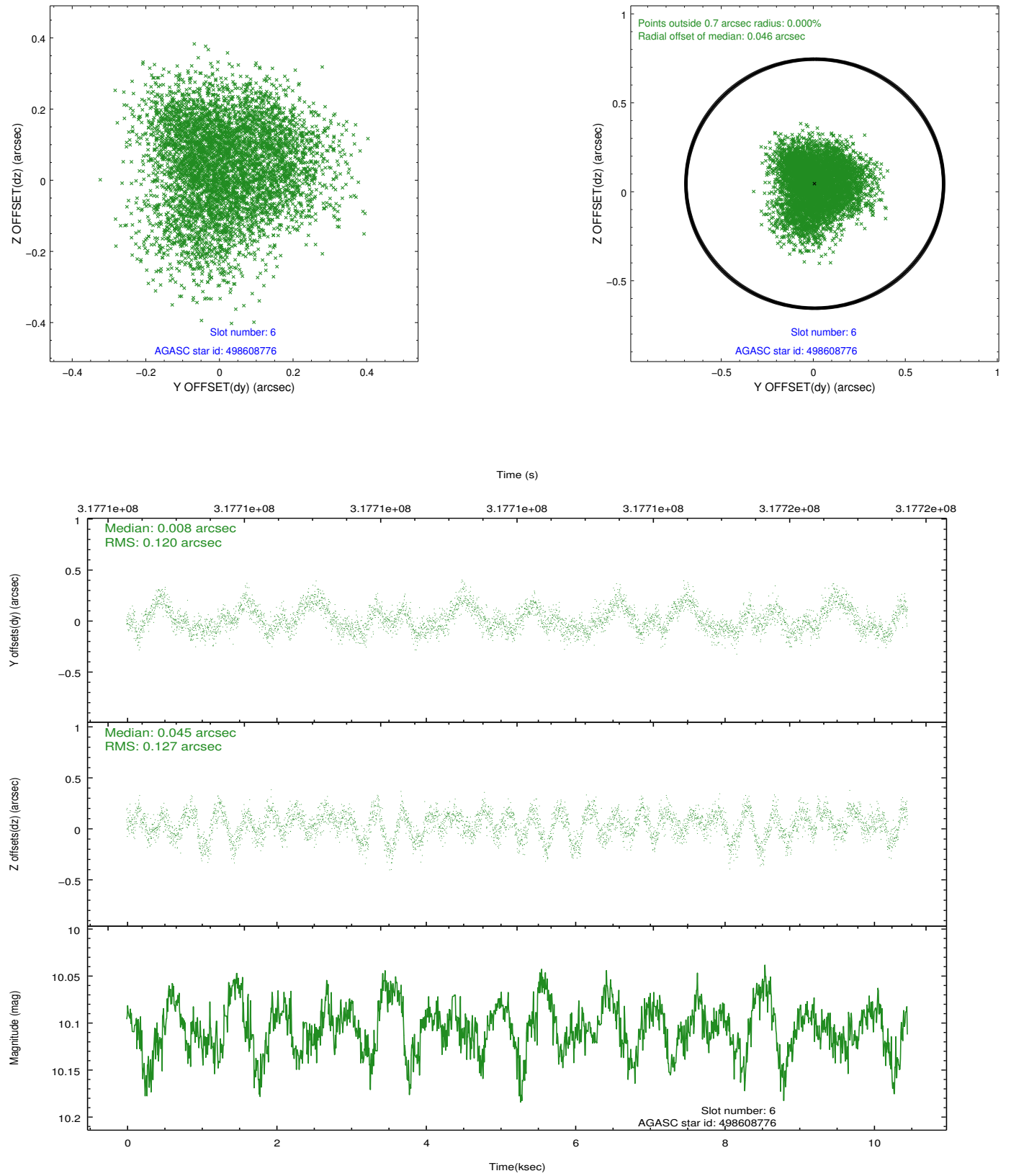
2.4.2 Slot 4



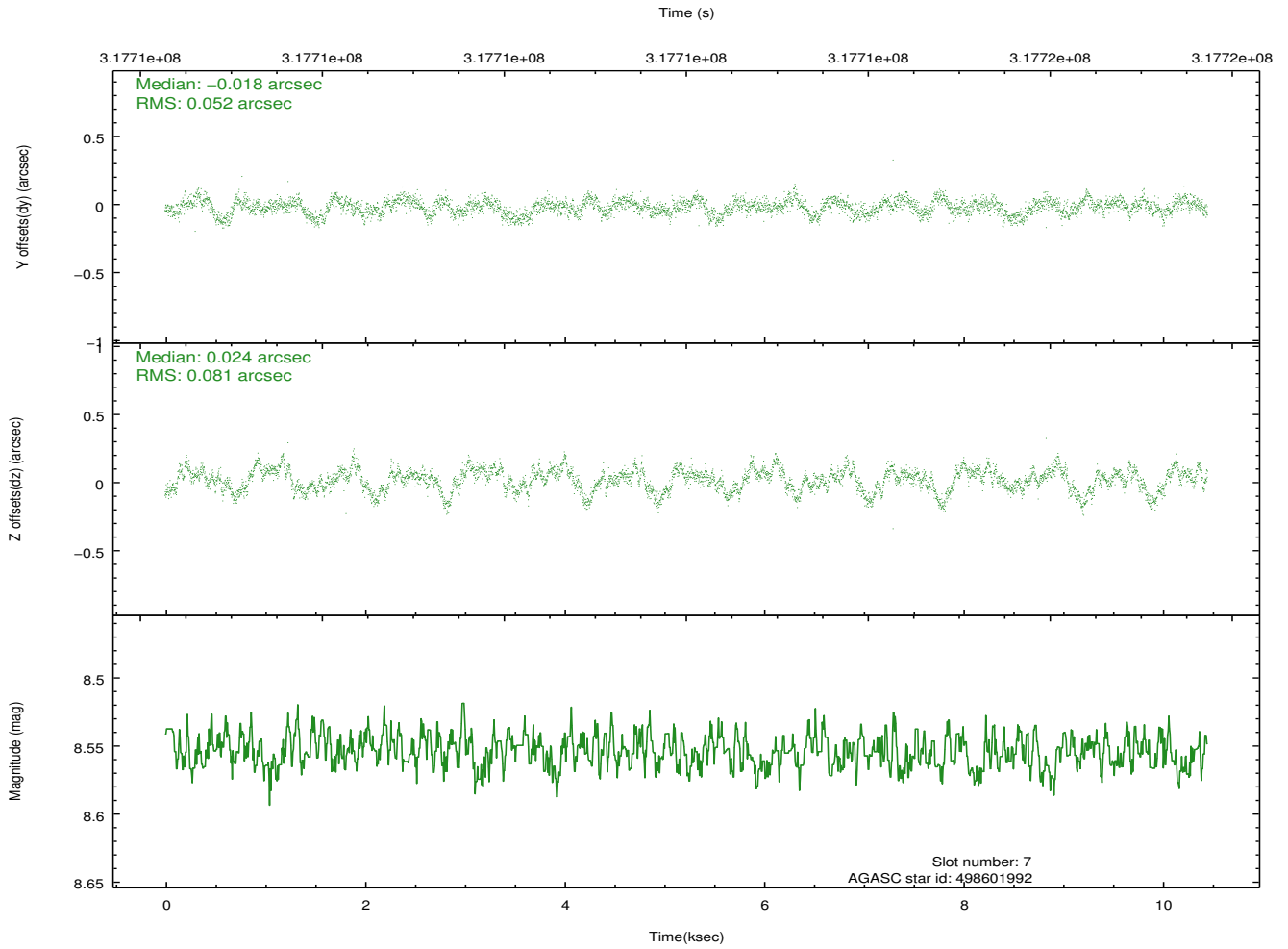
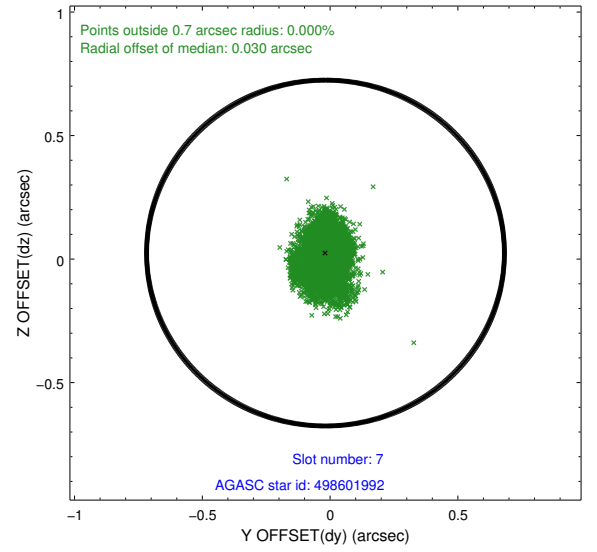
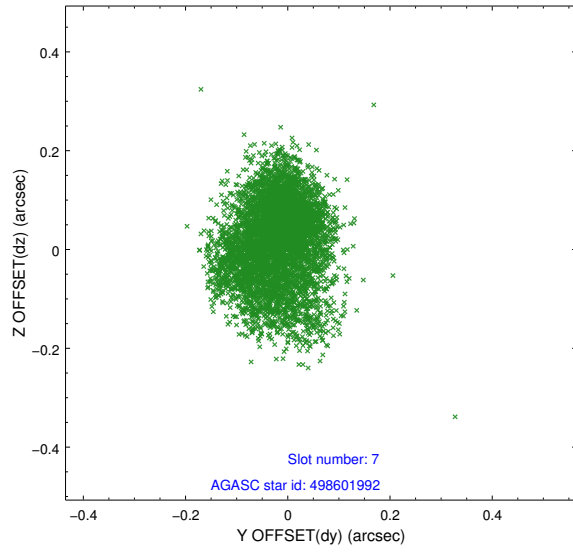
2.4.3 Slot 5



2.4.4 Slot 6

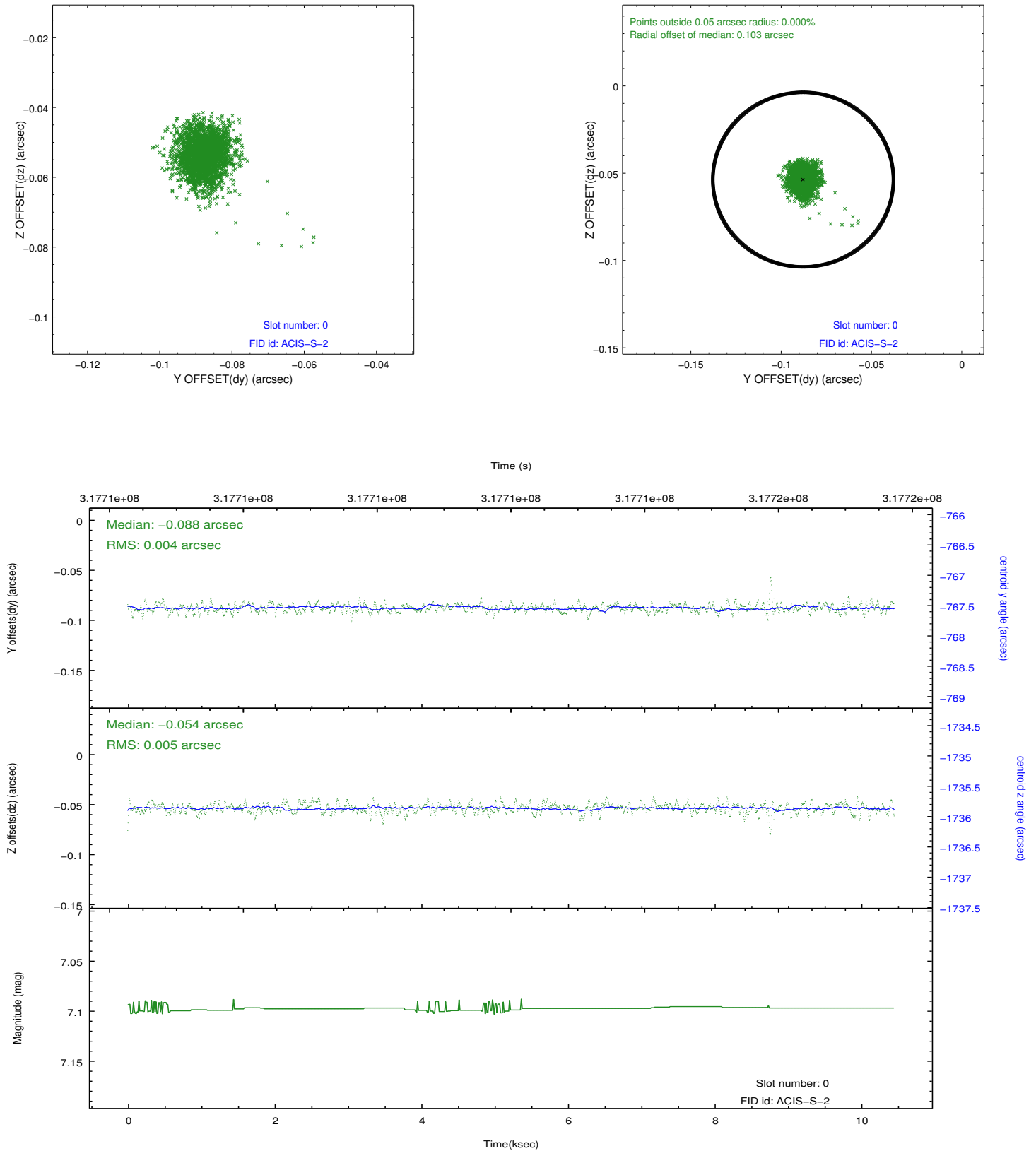


2.4.5 Slot 7

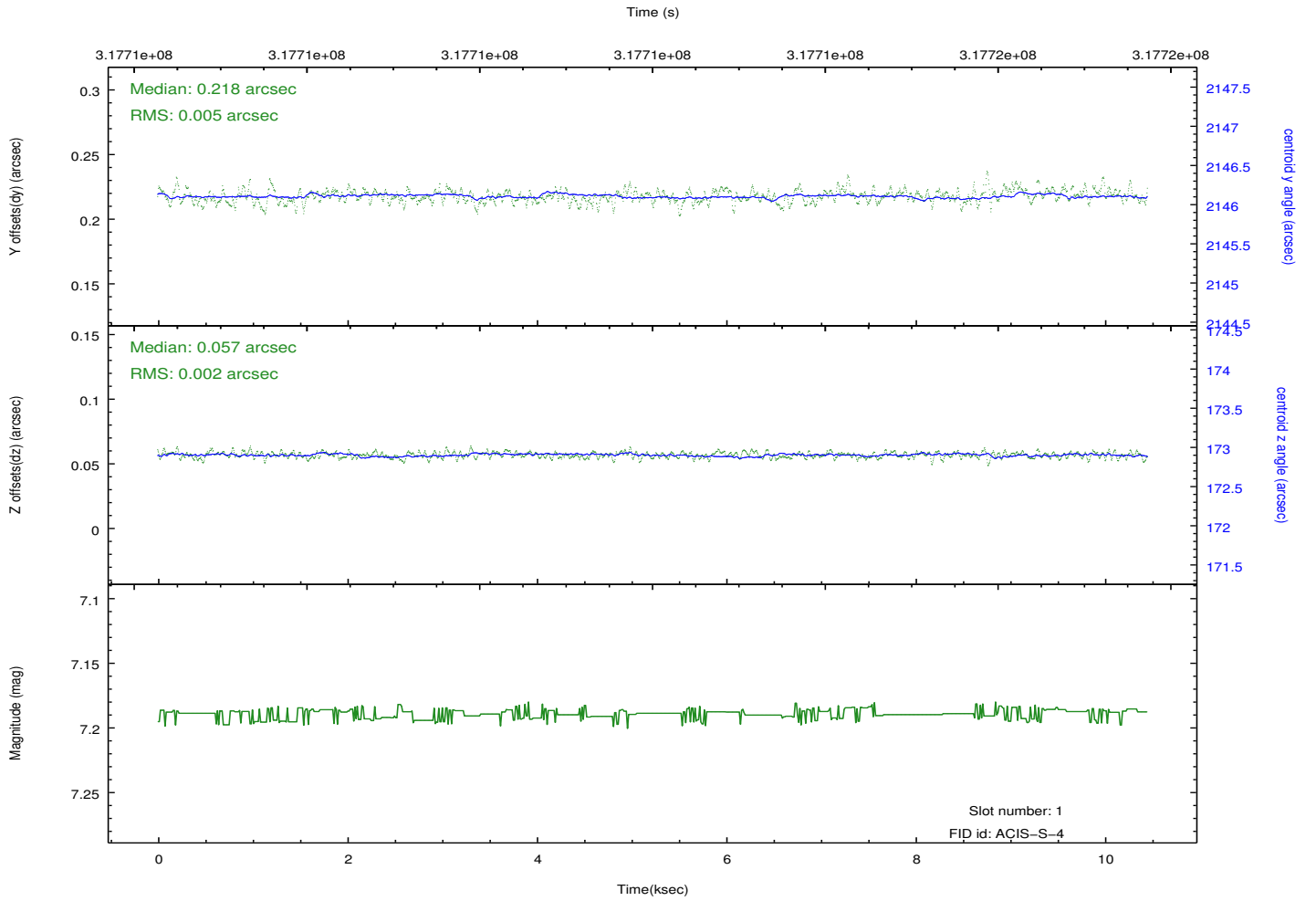
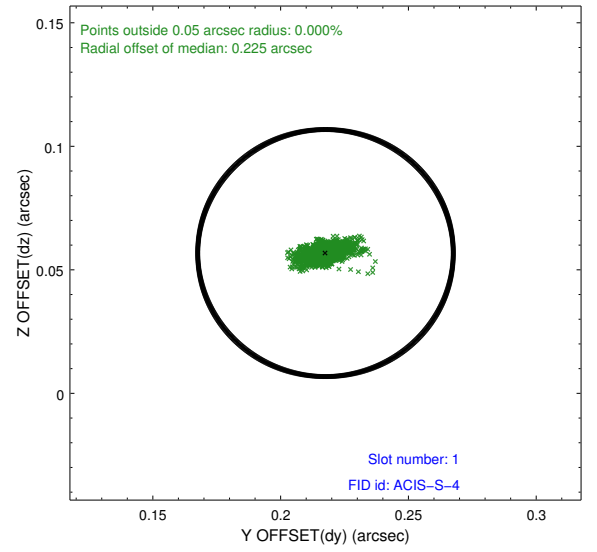
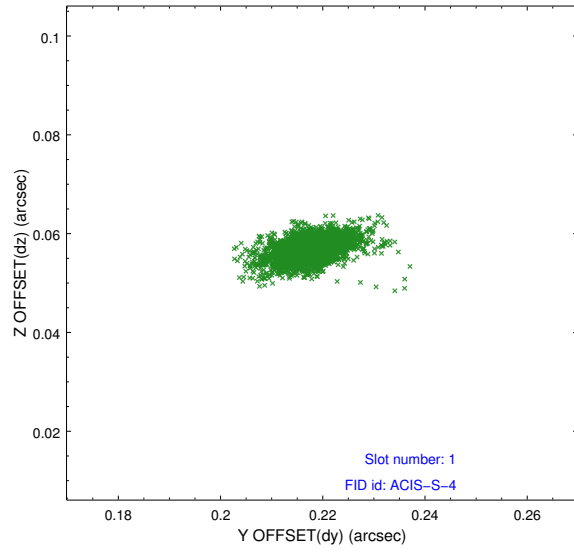


2.5 FID Slots

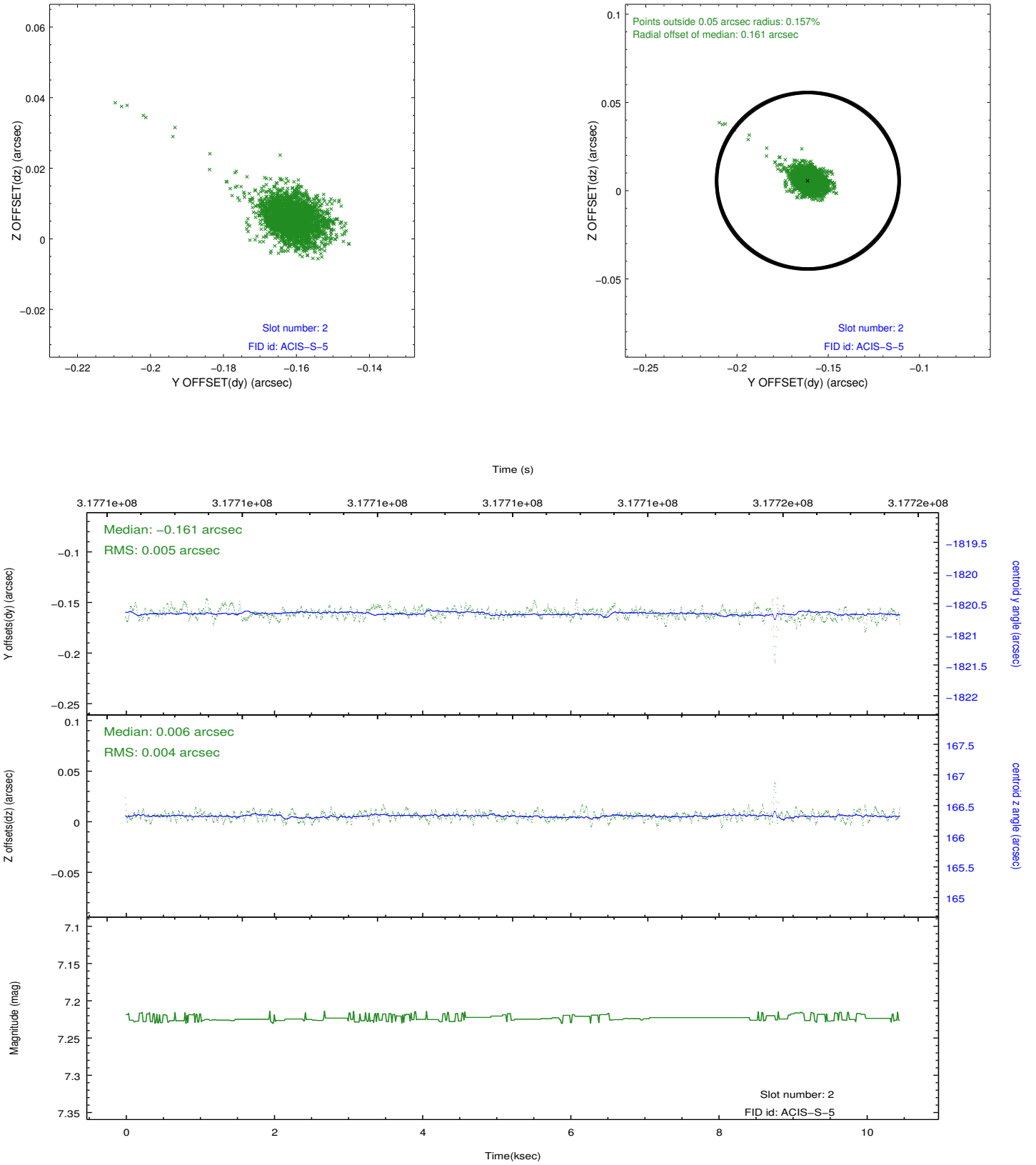
2.5.1 Slot 0



2.5.2 Slot 1



2.5.3 Slot 2



A Summary

A.1 Status

V&V Scientist	Jen Lauer
V&V Date (YYYY-MM-DD)	2012.05.10
V&V Edition	1
V&V Disposition and Status	OK
V&V Charge Time	10.069

A.2 Comments