

V&V Reference Report

L2 ASCDS Version : 7.6.10

Observation 889 - L2 Version 001
Chandra X-Ray Center

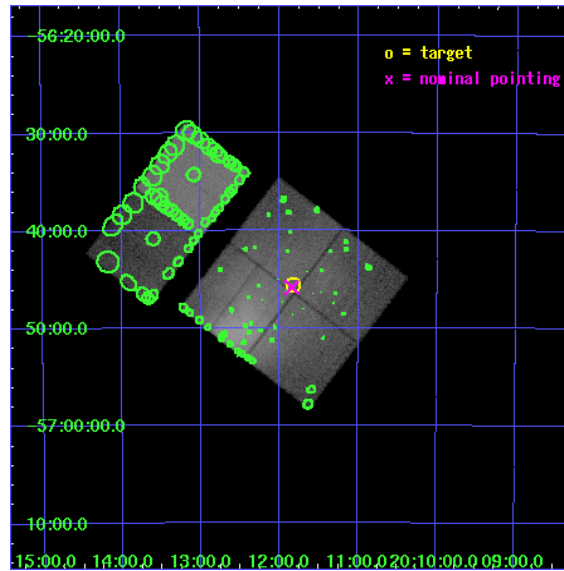
L2 Processing Date : Jun 6 2007

Contents

1	Front	2
2	OBI	3
2.1	OBI	3
2.1.1	Images	3
2.1.2	Bias	3
2.1.3	Parameters	4
2.1.4	Events	4
2.2	Compared Parameters	5
2.3	Aspect	6
2.4	Star Slots	9
2.4.1	Slot 3	9
2.4.2	Slot 4	10
2.4.3	Slot 5	11
2.4.4	Slot 6	12
2.4.5	Slot 7	13
2.5	FID Slots	14
2.5.1	Slot 0	14
2.5.2	Slot 1	15
2.5.3	Slot 2	16
3	Point Sources	17
A	Summary	18
A.1	Status	18
A.2	Comments	18

1 Front

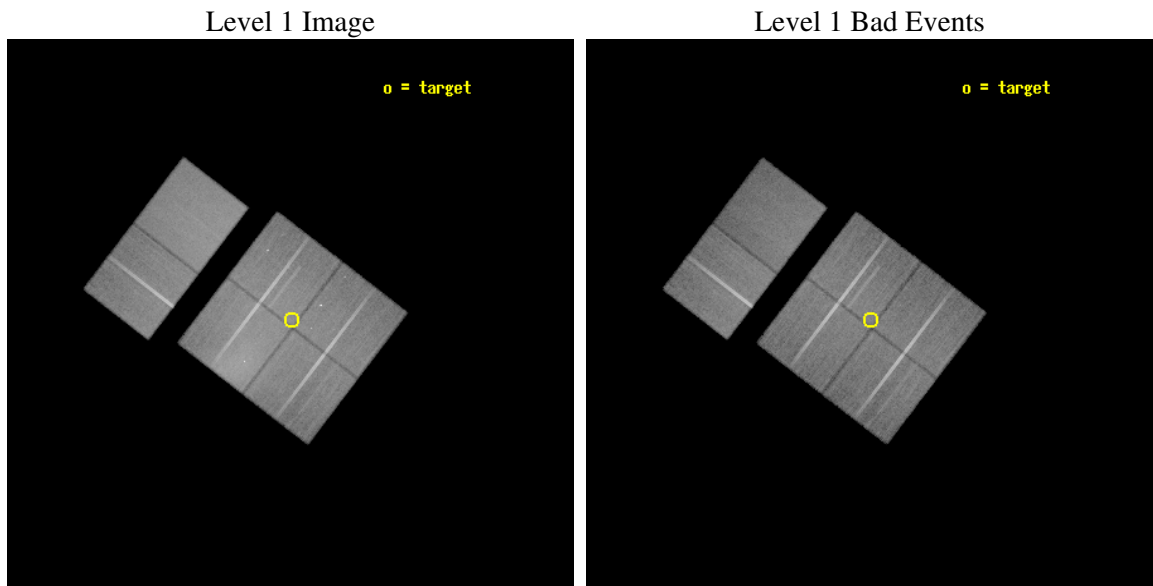
seq_num	800065
obs_id	889
title	SEARCH FOR RECENT MERGER EVENTS IN GALAXY CLUSTERS SHOWING A RADIO HALO
observer	Dr. Roberto Fusco-Femiano
object	A3667
dtcycle	0
cycle	P
ra_targ	302.958333
dec_targ	-56.759444
ra_nom	302.96057599059
dec_nom	-56.764168867669
roll_nom	307.52595172367
revision	2
ontime	50956.800047457
livetime	50311.554362755
ontime0	50956.800047457
ontime1	50956.800047457
ontime2	50956.800047457
ontime3	50956.800047457
ontime6	50956.800047457
ontime7	50956.800047457
l2events	594927



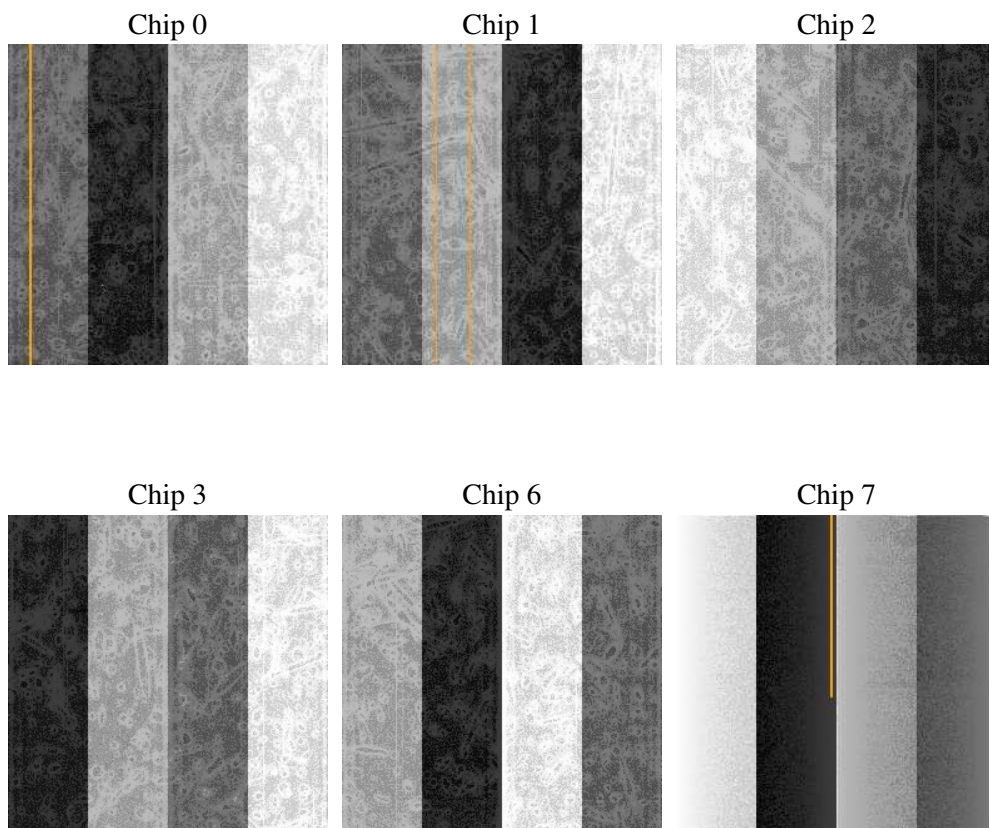
2 OBI

2.1 OBI

2.1.1 Images



2.1.2 Bias



2.1.3 Parameters

obi_num	0
ascdsver	7.6.10
caldsver	3.4.0
date	2007-06-06T23:33:54
revision	2

sched_exp_time	51000.000000
ontime	50956.800047457
ontime0	50956.800047457
ontime1	50956.800047457
ontime2	50956.800047457
ontime3	50956.800047457
ontime6	50956.800047457
ontime7	50956.800047457
l1events	2156886

2.1.4 Events

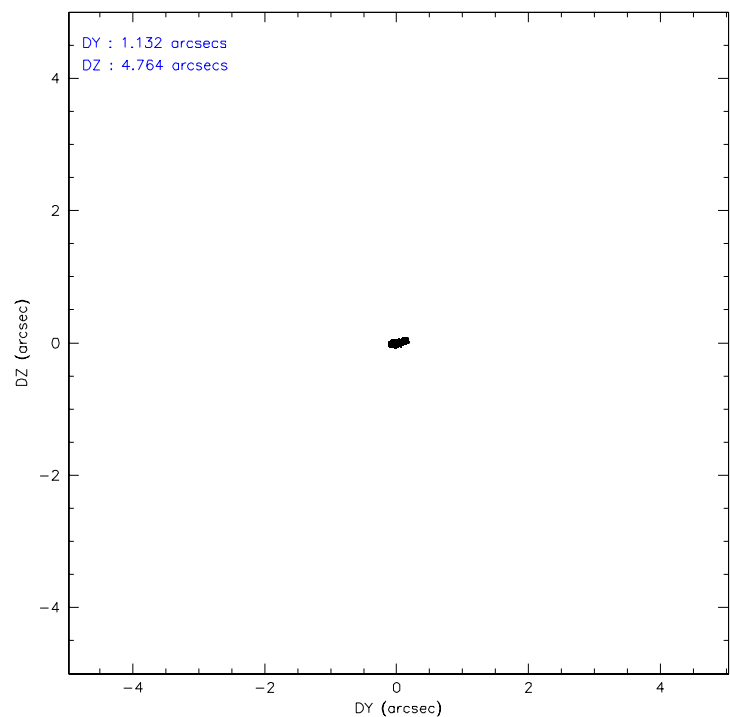
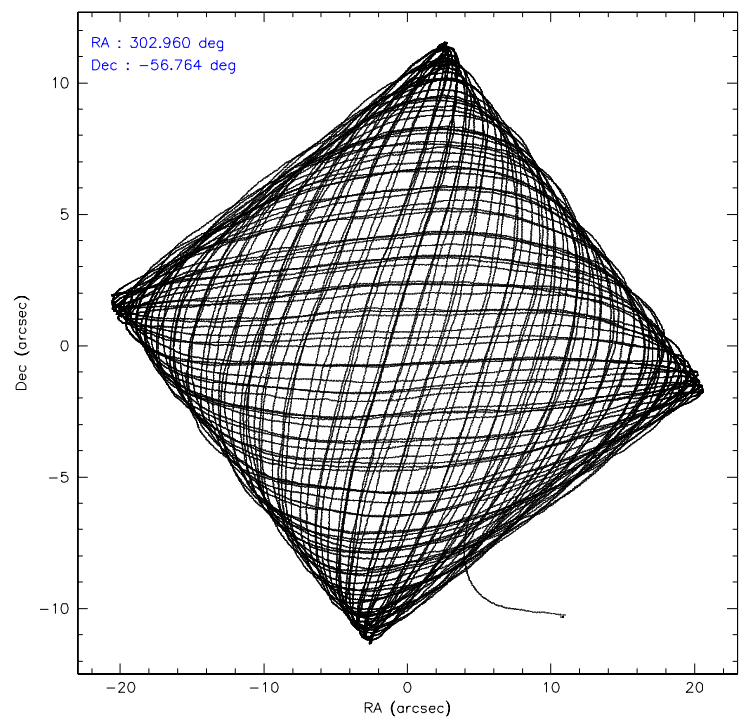
	ccd 0	ccd 1	ccd 2	ccd 3	ccd 6	ccd 7
level 1 events	331939	321219	456339	347876	321477	378036
rejected events	240935	246690	264632	267614	277672	215807
rejected %	72%	76%	57%	76%	86%	57%

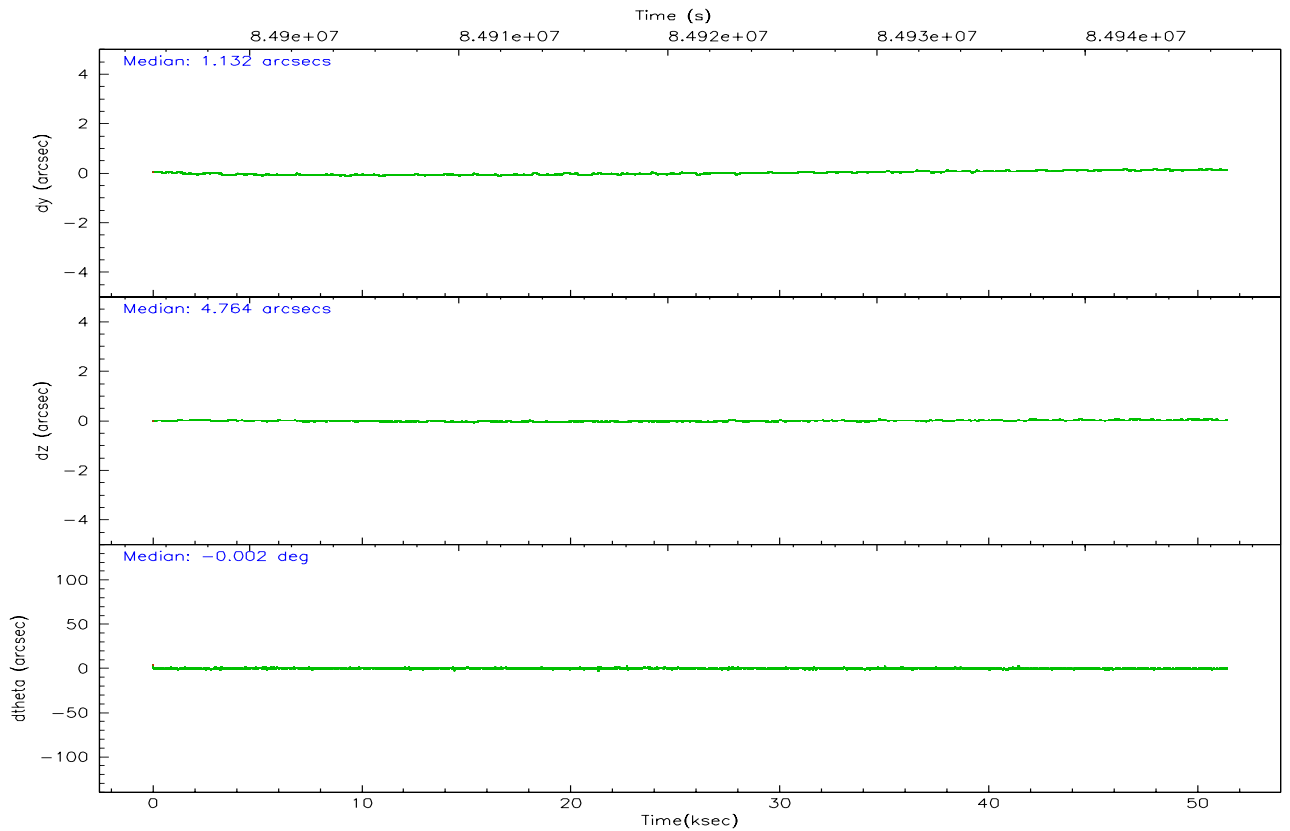
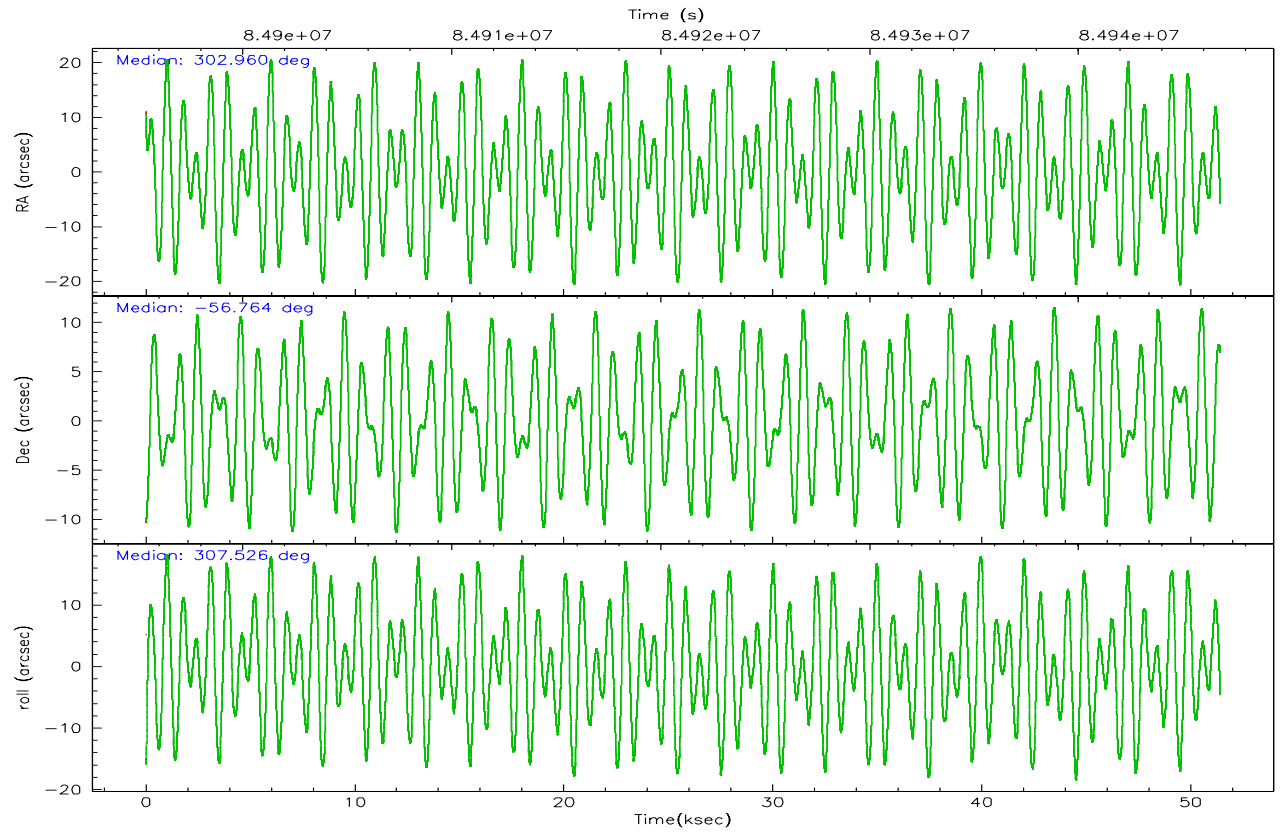
	ccd 0	ccd 1	ccd 2	ccd 3	ccd 6	ccd 7
grade 0 events	61015	46263	143207	52558	21853	17742
	18%	14%	31%	15%	6%	4%
grade 1 events	306	285	589	298	160	384
	0%	0%	0%	0%	0%	0%
grade 2 events	12725	10861	22862	11340	7688	32317
	3%	3%	5%	3%	2%	8%
grade 3 events	5209	4912	7965	4571	3664	14923
	1%	1%	1%	1%	1%	3%
grade 4 events	4728	4829	7803	4703	3713	15091
	1%	1%	1%	1%	1%	3%
grade 5 events	10438	11094	10103	10975	12284	35428
	3%	3%	2%	3%	3%	9%
grade 6 events	7328	7665	9878	7096	6888	82170
	2%	2%	2%	2%	2%	21%
grade 7 events	230190	235310	253932	256335	265227	179981
	69%	73%	55%	73%	82%	47%

2.2 Compared Parameters

Parameter	Planned	Actual	Parameter	Planned	Actual
Instrument	ACIS	ACIS	Obspar format version number	6	6
Detector	ACIS-012367	ACIS-012367	Obspar file type	PREDICTED	ACTUAL
Grating	NONE	NONE	Obspar update status	NONE	UPDATED
Data mode	FAINT	FAINT	Number of optional ACIS chips dropped	0	0
Observation mode	POINTING	POINTING	On-chip summing requested	N	N
Pointing RA	302.914237	302.9605759905872	Subarray requested	NONE	NONE
Pointing Dec	-56.753551	-56.76416886766853	Alternating exposures requested	N	N
Pointing Roll	307.278512	307.5259517236699	Primary exposure time	3.200000	3.2
SIM focus pos (mm)	-0.782348	-0.7809083437167272			
SIM defocus (mm)	0	0.001439871863259334			
SIM translation stage pos (mm)	-233.592463	-233.5924630914318			
SIM translation stage offset (mm)	0	1.008850210837409e-05			
Observation start time	84895782.184000	84894712.066928			
Observation start date	2000-09-09T14:08:38	2000-09-09T13:51:52			
Observation end time	84946782.184000	84947437.043908			
Observation end date	2000-09-10T04:18:38	2000-09-10T04:30:37			
Read mode	TIMED	TIMED			

2.3 Aspect



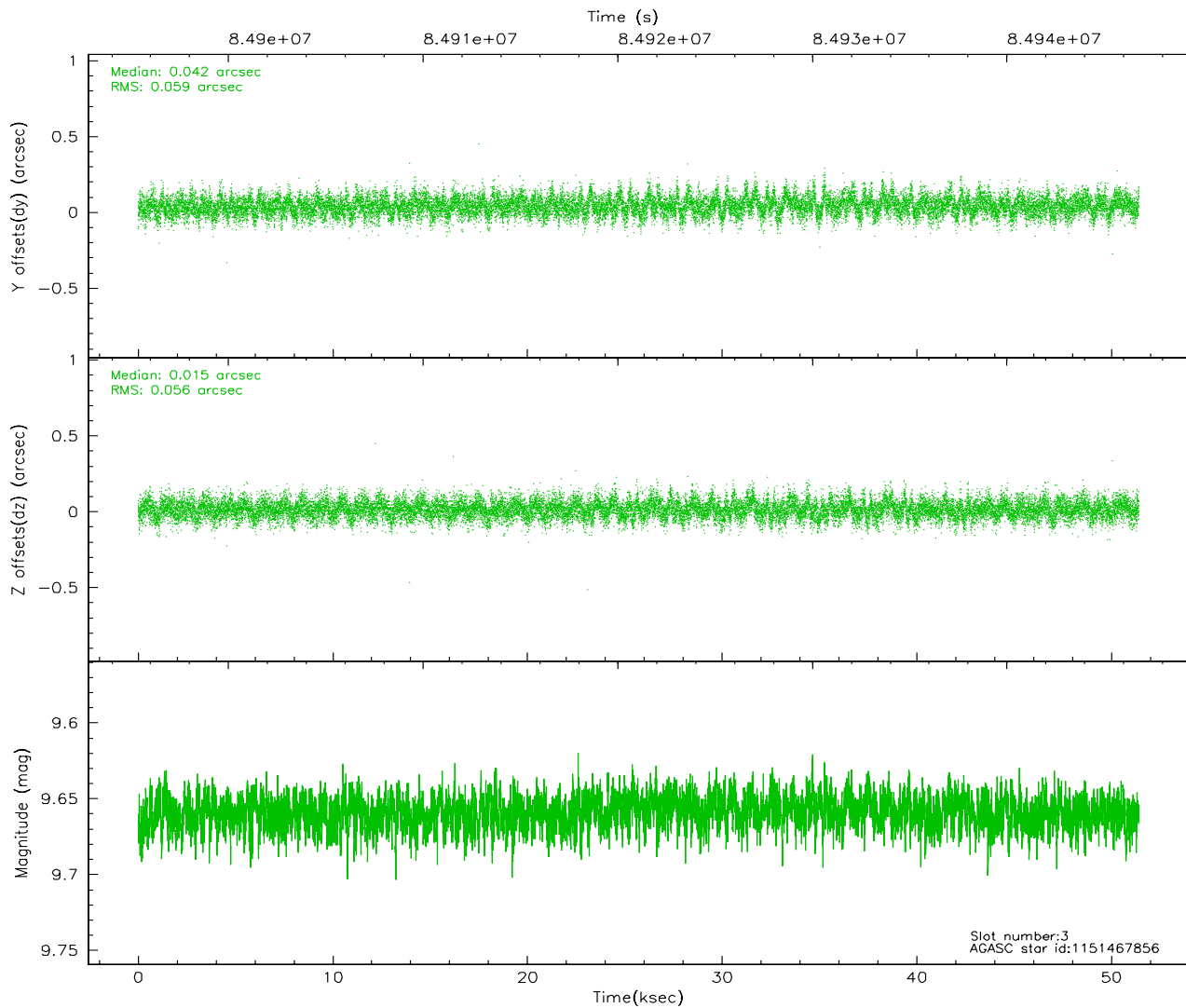
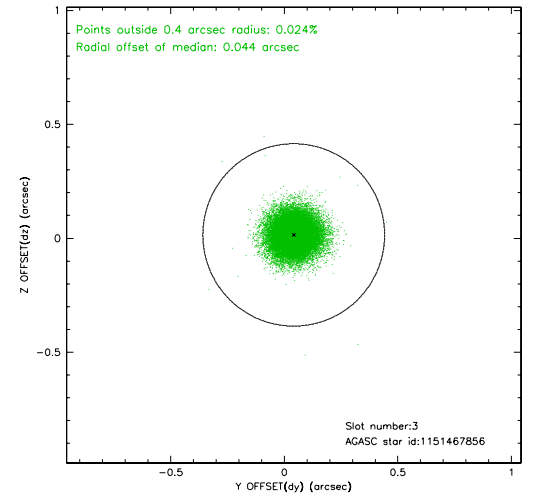
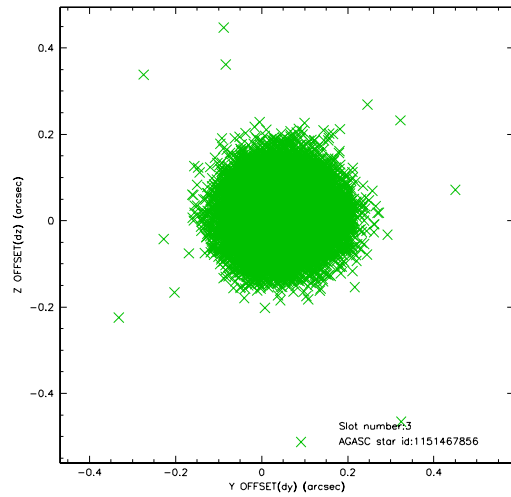


Slot Statistics

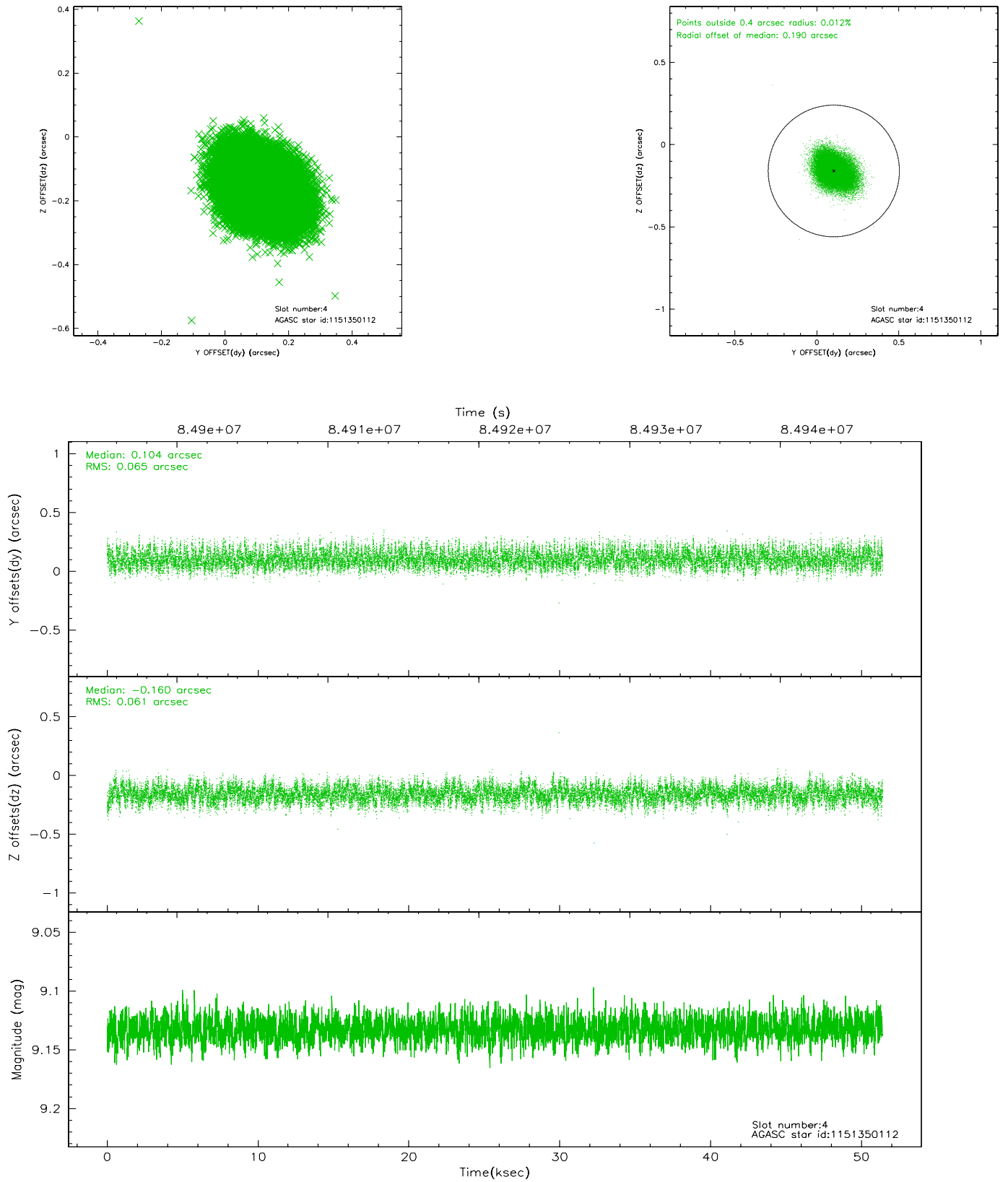
slot	status	id	mag	n_pts	med_dy	med_dz	dr1	dr2	ra	dec	mean_y	mean_z
0	FID	ACIS-I-2	7.15	12540	-0.020	-0.005	0.008	0.015	0.000000	0.000000	-755.49	-834.37
1	FID	ACIS-I-4	7.19	12539	-0.076	0.022	0.005	0.009	0.000000	0.000000	2158.52	1071.86
2	FID	ACIS-I-5	7.23	12538	-0.005	0.052	0.008	0.014	0.000000	0.000000	-1809.33	1069.69
3	GUIDE	1151467856	9.66	25051	0.042	0.015	0.086	0.140	303.931677	-56.775960	1292.06	1539.10
4	GUIDE	1151350112	9.13	25070	0.104	-0.160	0.095	0.153	303.241865	-56.846660	659.20	309.32
5	GUIDE	1150828192	10.06	25058	-0.211	0.087	0.140	0.232	303.063778	-55.863307	-2366.71	2181.72
6	GUIDE	1151478088	10.09	25002	0.031	0.042	0.135	0.223	303.724049	-56.698649	820.21	1387.85
7	GUIDE	1151482144	9.35	25065	0.035	0.020	0.093	0.151	304.026891	-56.506614	646.22	2286.56

2.4 Star Slots

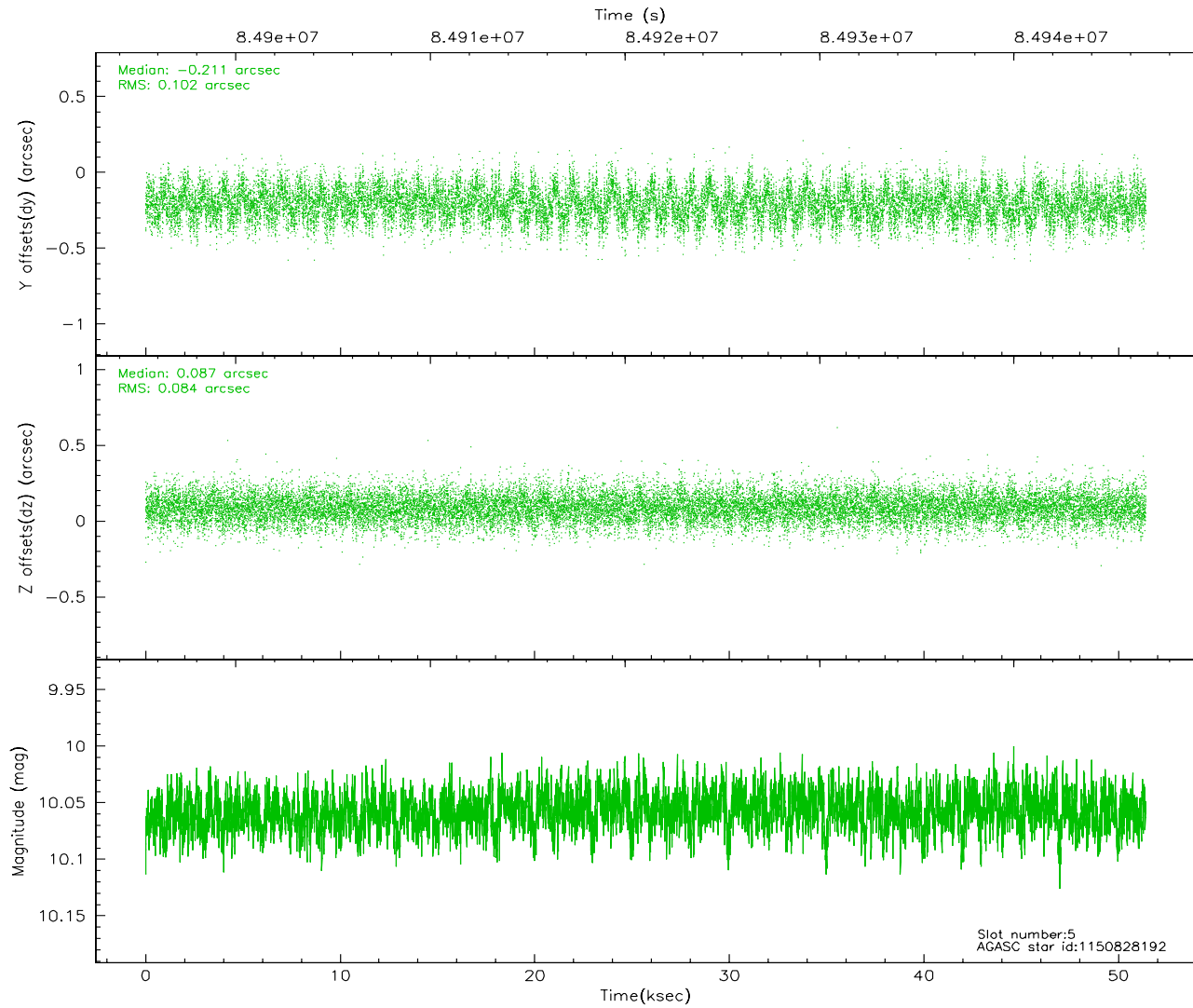
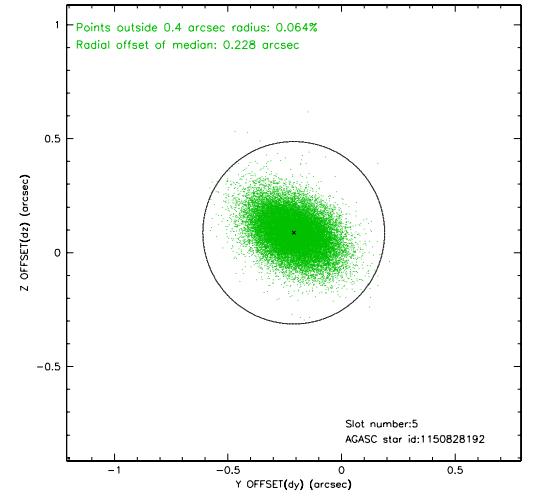
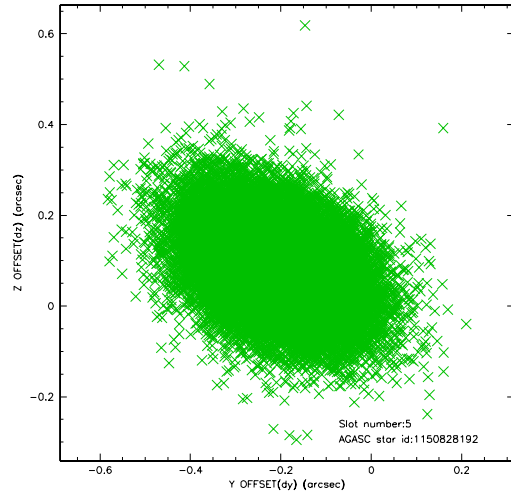
2.4.1 Slot 3



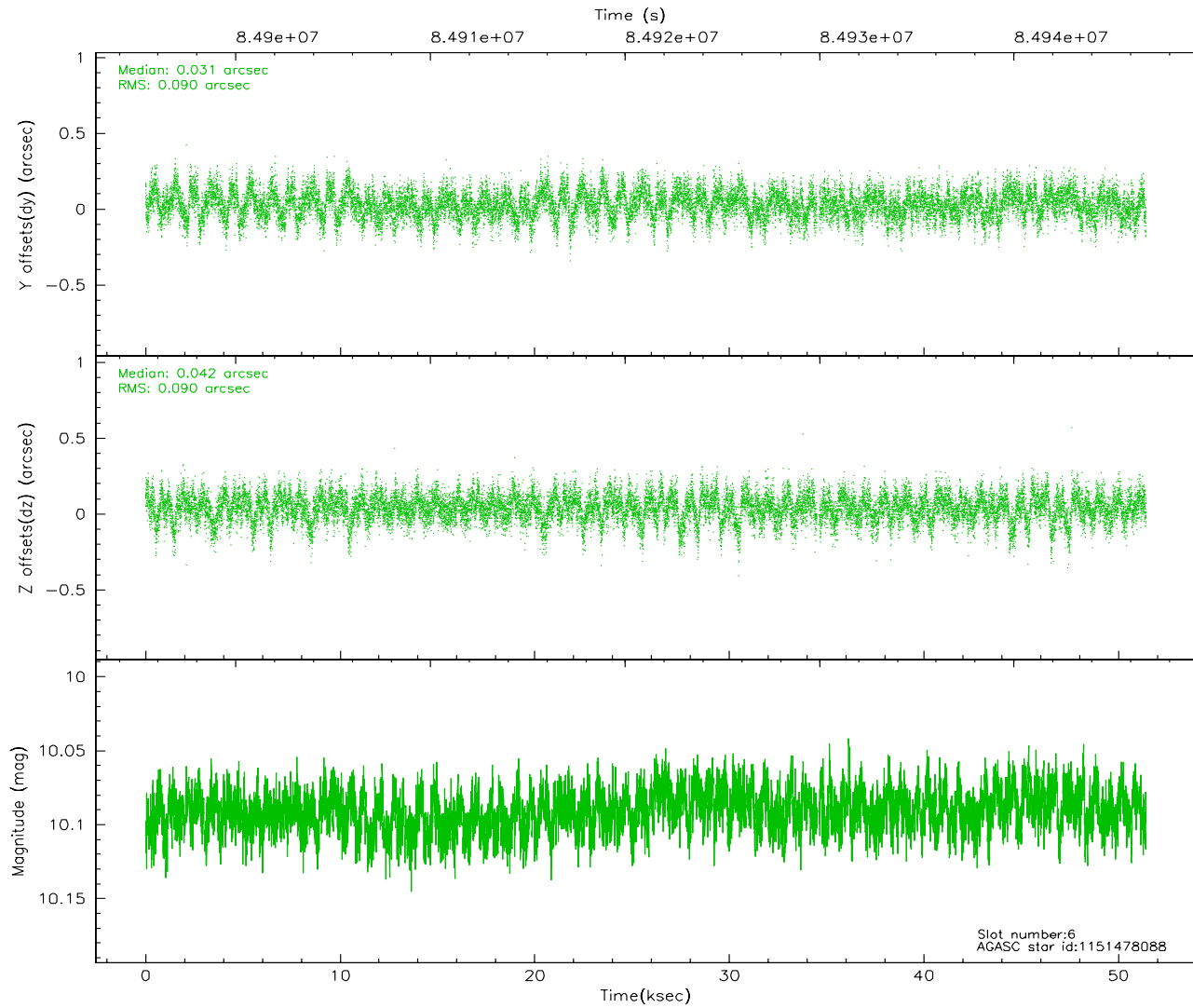
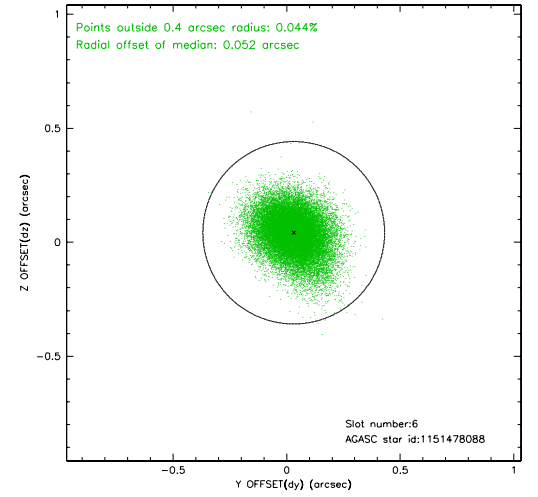
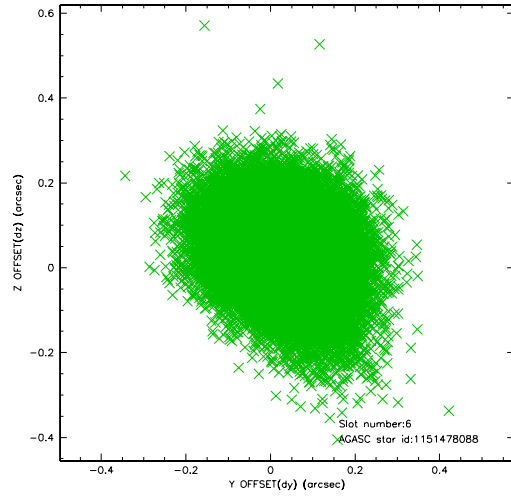
2.4.2 Slot 4



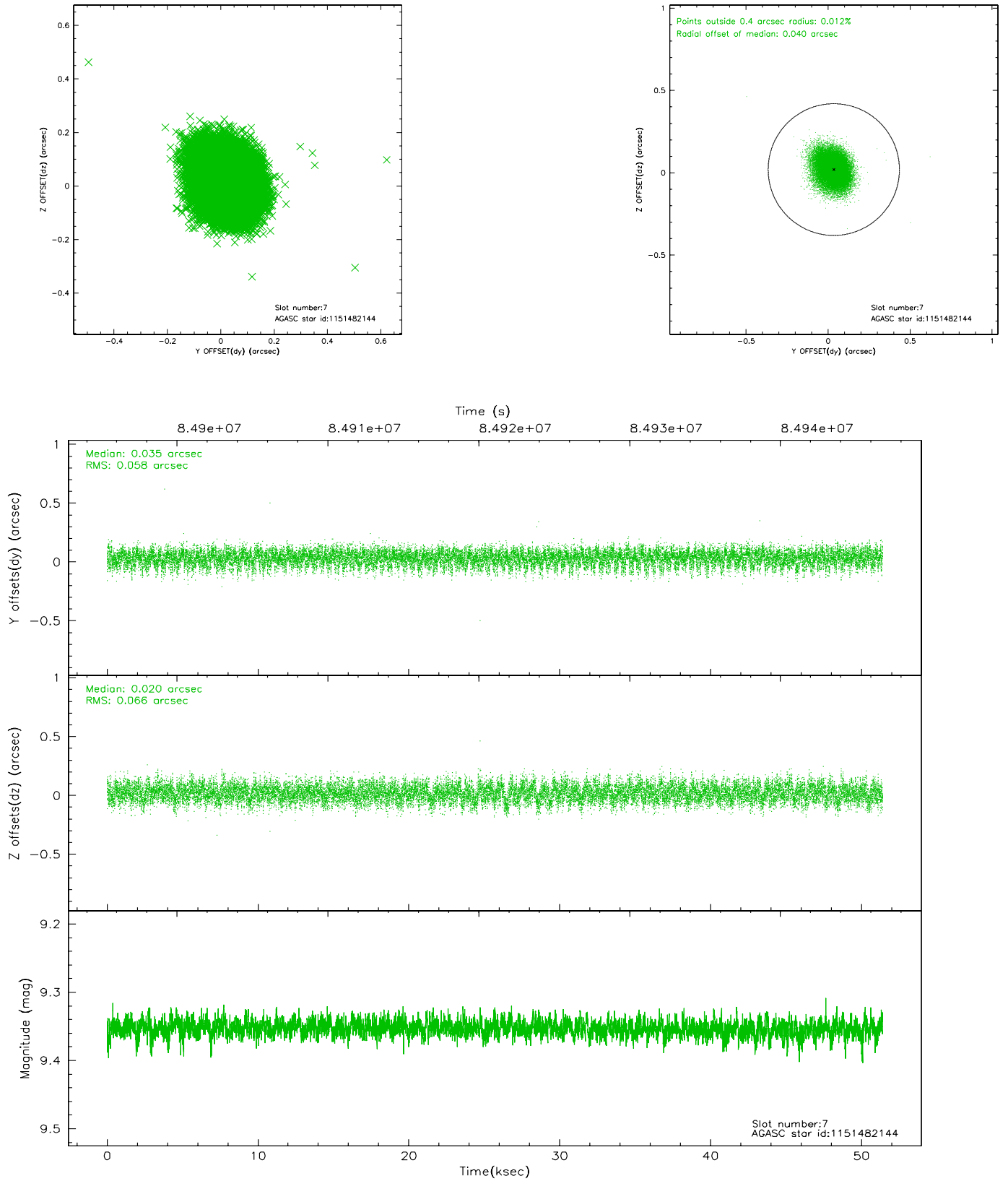
2.4.3 Slot 5



2.4.4 Slot 6

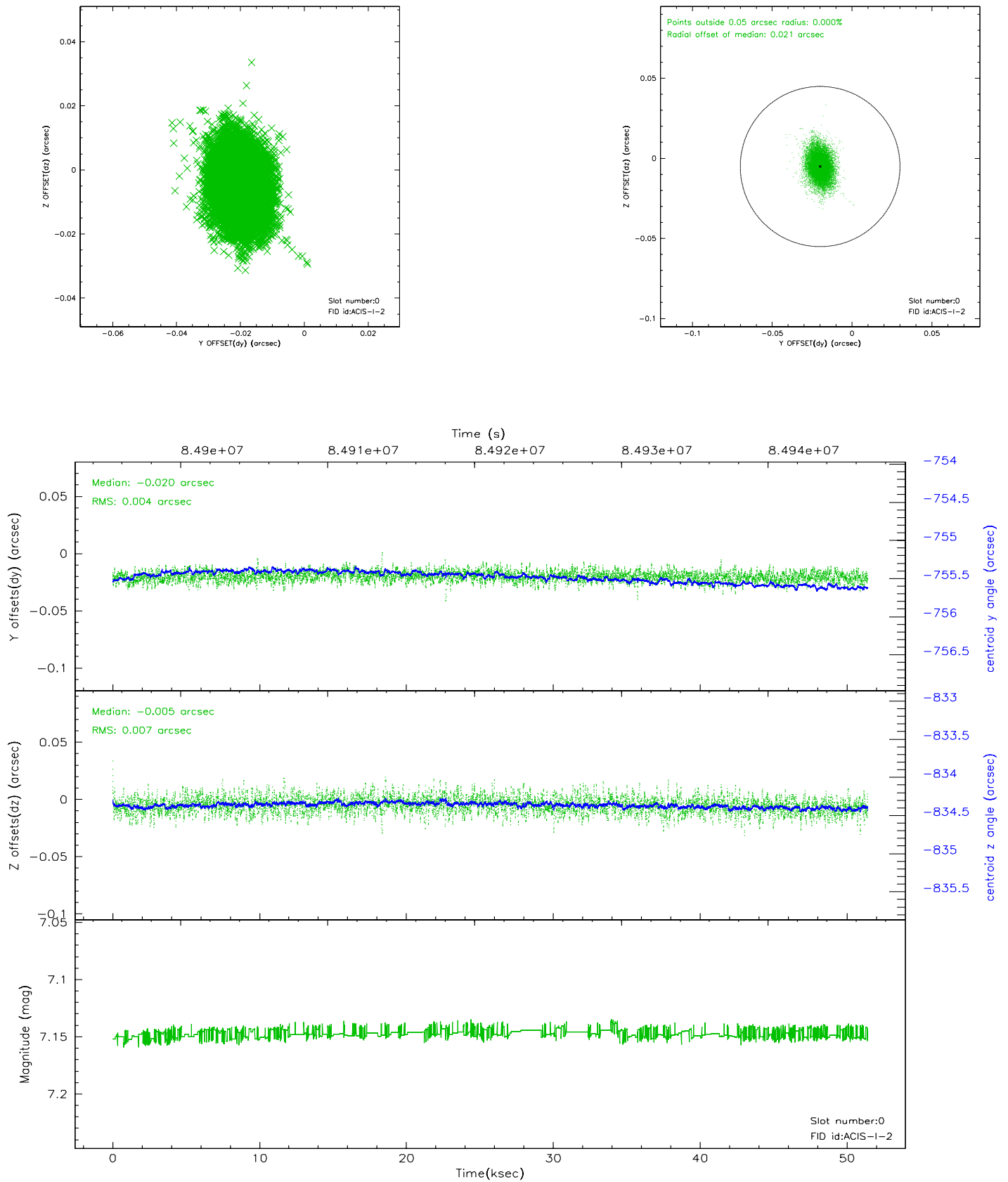


2.4.5 Slot 7

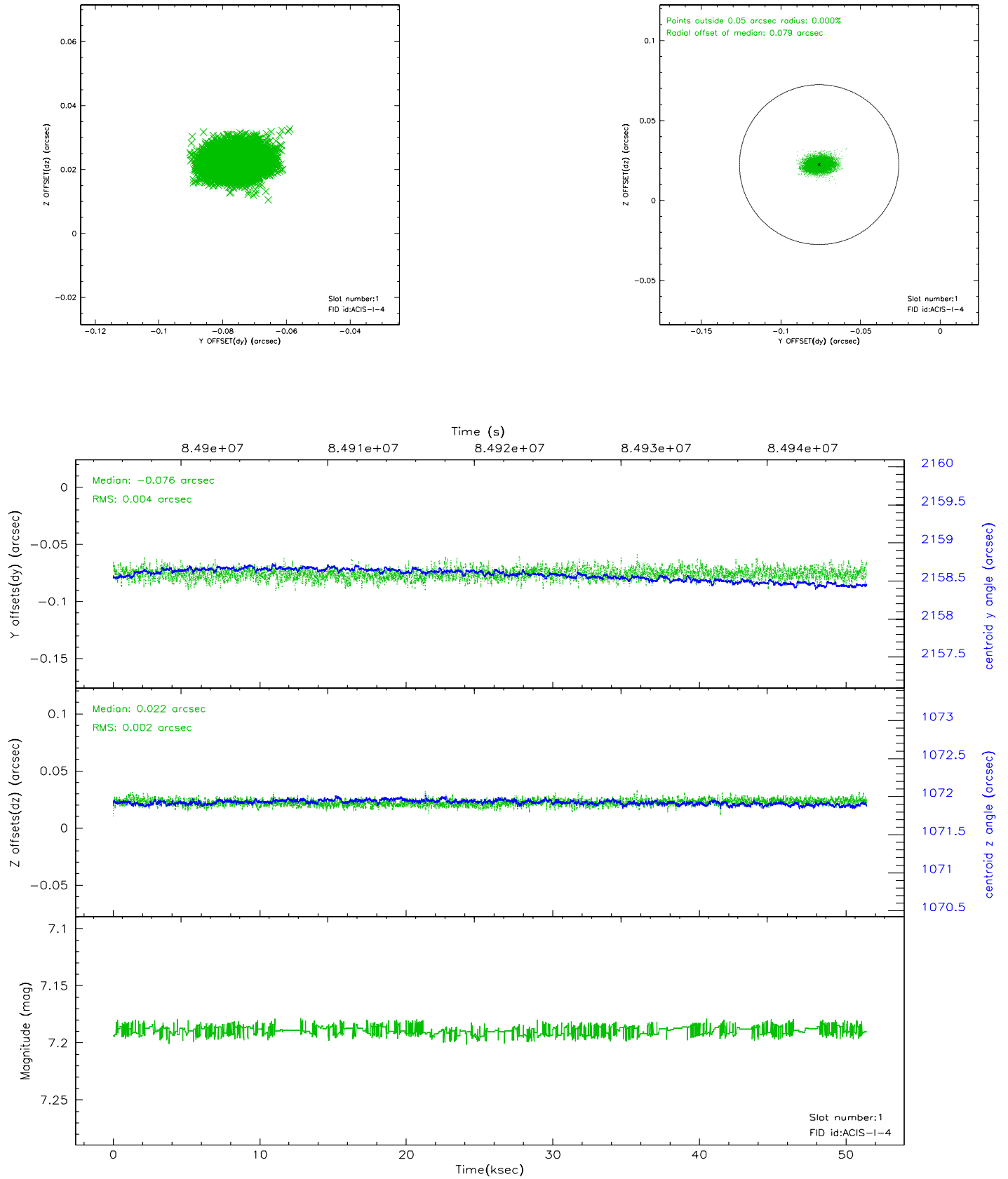


2.5 FID Slots

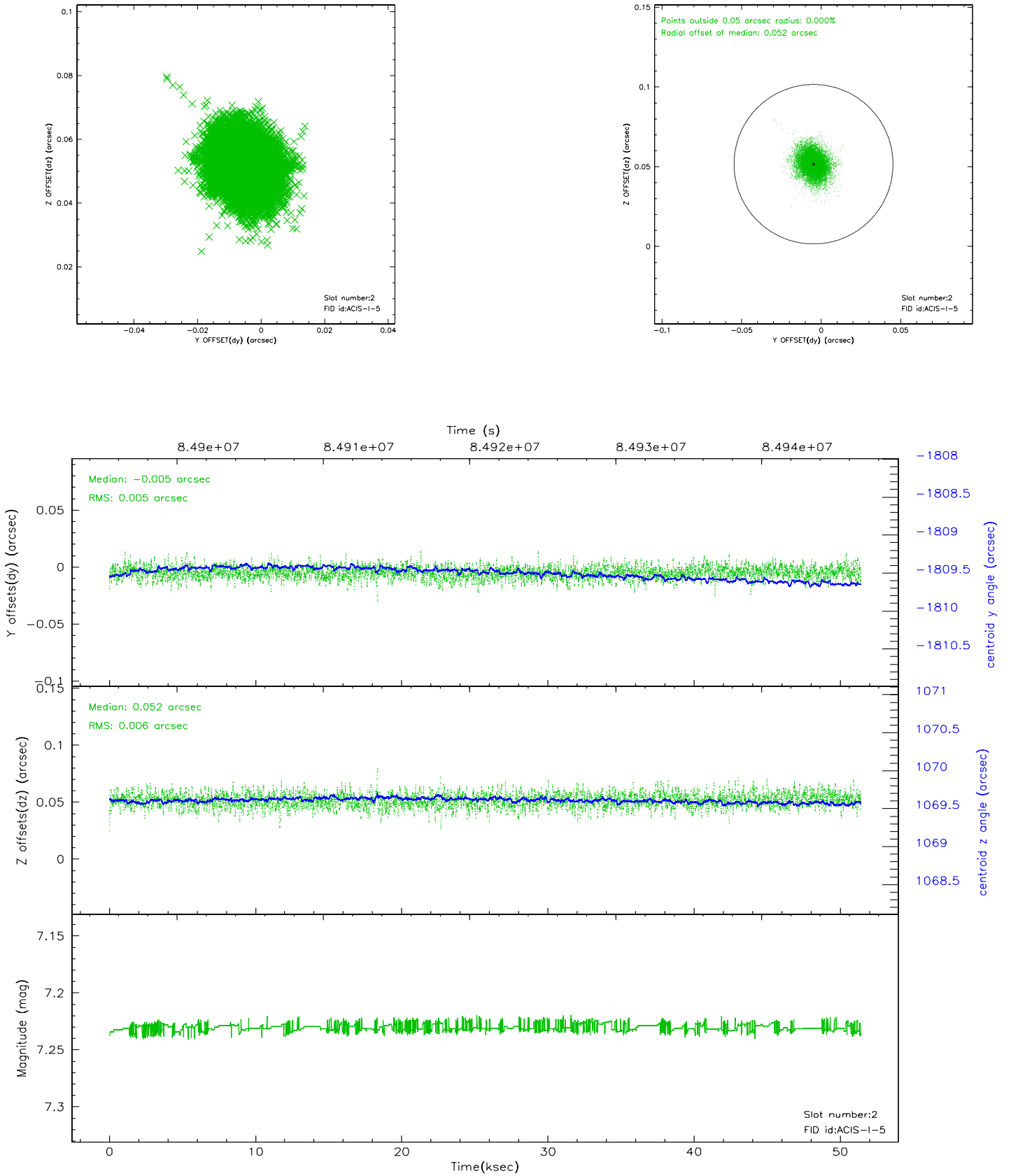
2.5.1 Slot 0



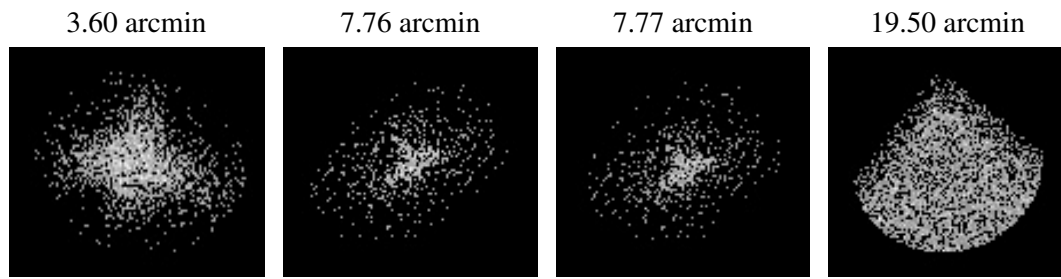
2.5.2 Slot 1



2.5.3 Slot 2



3 Point Sources



A Summary

A.1 Status

V&V Scientist	Beth Sundheim
V&V Date (YYYY-MM-DD)	2007.06.07
V&V Edition	1
V&V Disposition and Status	OK
V&V Charge Time	50.956

A.2 Comments