

V&V Reference Report

L2 ASCDS Version : 8.4.4

Observation 8729 - L2 Version 2
Chandra X-Ray Center

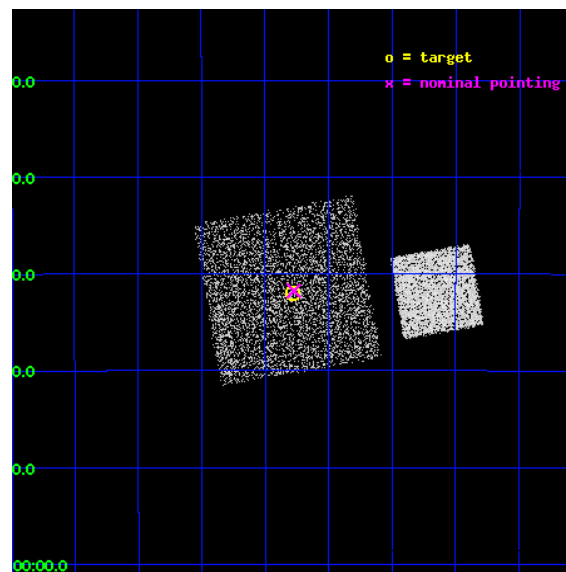
L2 Processing Date : May 14 2012

Contents

1	Front	2
2	OBI	3
2.1	OBI	3
2.1.1	Images	3
2.1.2	Bias	3
2.1.3	Parameters	4
2.1.4	Events	4
2.2	Compared Parameters	5
2.3	Aspect	6
2.4	Star Slots	9
2.4.1	Slot 3	9
2.4.2	Slot 4	10
2.4.3	Slot 5	11
2.4.4	Slot 6	12
2.4.5	Slot 7	13
2.5	FID Slots	14
2.5.1	Slot 0	14
2.5.2	Slot 1	15
2.5.3	Slot 2	16
A	Summary	17
A.1	Status	17
A.2	Comments	17

1 Front

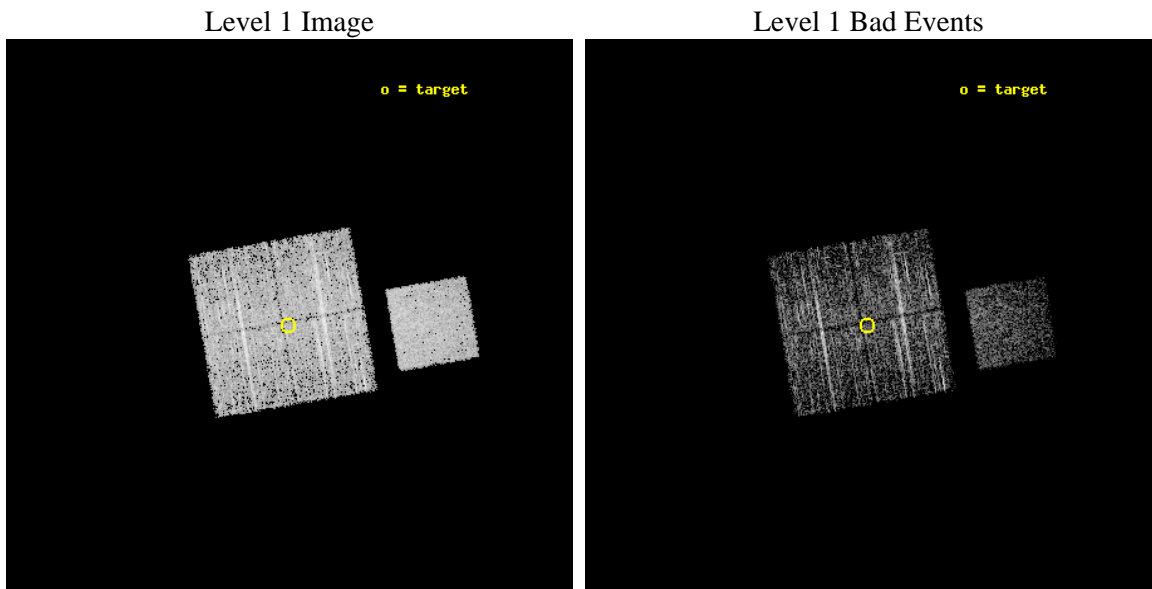
seq_num	400780	Sequence number
obs_id	8729	Observation id
title	The Galactic Bulge Survey: categorising the plethora of faint X-ray sources in the Galactic Bulge	Proposal title
observer	dr Peter Jonker	Principal investigator
object	GBS1	Source name
dtcycle	0	
cycle	P	events from which exps? Prim/Second/Both
ra_targ	269.070126	Observer's specified target RA [deg]
dec_targ	-27.534242	Observer's specified target Dec [deg]
ra_nom	269.06831729573	Nominal RA [deg]
dec_nom	-27.529344443043	Nominal Dec [deg]
roll_nom	80.207863552308	Nominal Roll [deg]
revision	2	Processing version of data
ontime	2182.4000167847	Sum of GTIs [s]
livetime	2153.8853539059	Livetime [s]
ontime0	2179.2590165138	Sum of GTIs [s]
ontime1	2182.4000167847	Sum of GTIs [s]
ontime2	2182.4000167847	Sum of GTIs [s]
ontime3	2182.4000167847	Sum of GTIs [s]
ontime7	2182.4000167847	Sum of GTIs [s]
l2events	15258	Number of level 2 events



2 OBI

2.1 OBI

2.1.1 Images



2.1.2 Bias



2.1.3 Parameters

obi_num	0	Obi number	sched_exp_time	2000.000000	[s] Scheduled observation exposure time
ascdsver	8.4.4	Processing system revision	ontime	2182.4000167847	Sum of GTIs [s]
caldsver	4.4.9	 	ontime0	2179.2590165138	Sum of GTIs [s]
date	2012-05-14T20:45:33	Date and time of file creation	ontime1	2182.4000167847	Sum of GTIs [s]
revision	2	Processing version of data	ontime2	2182.4000167847	Sum of GTIs [s]
			ontime3	2182.4000167847	Sum of GTIs [s]
			ontime7	2182.4000167847	Sum of GTIs [s]
			l1events	101699	Number of level 1 events

2.1.4 Events

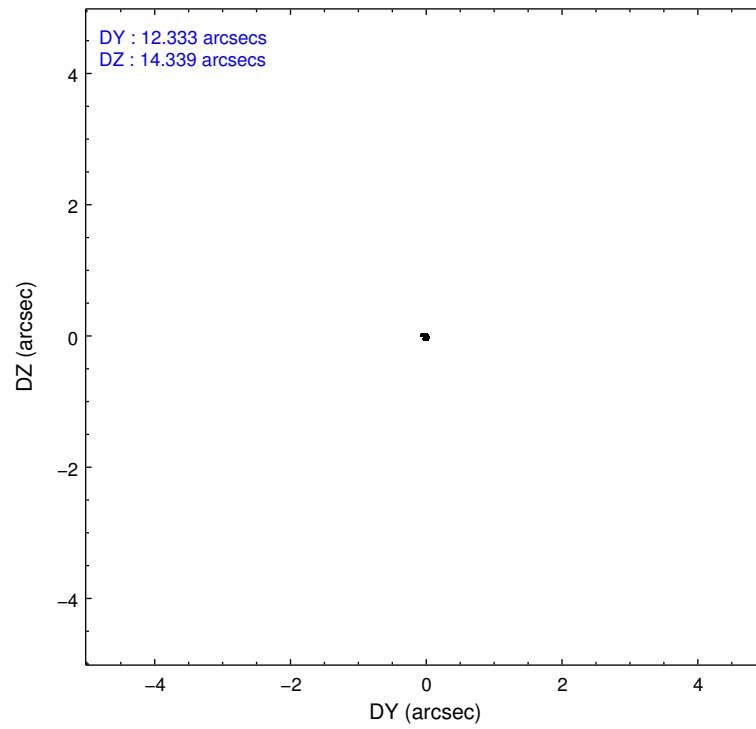
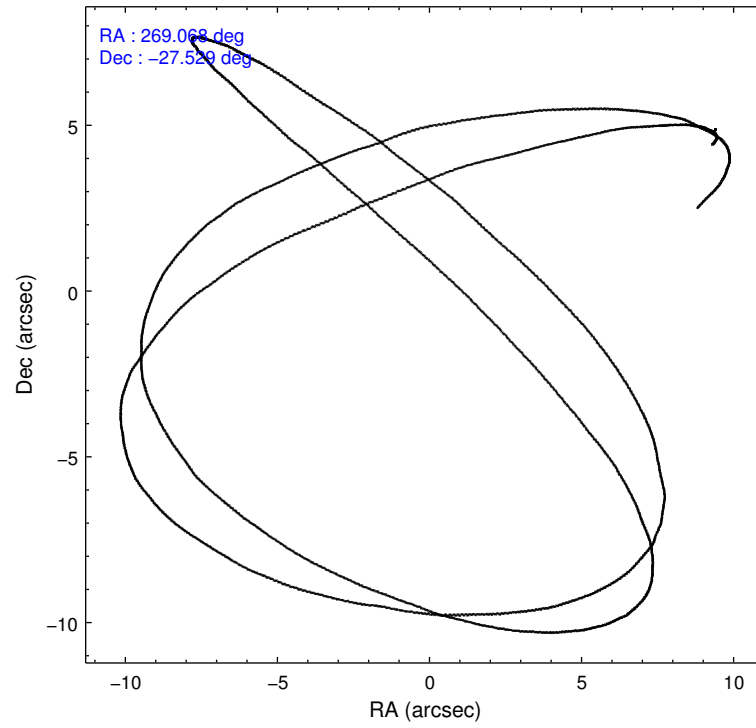
	ccd 0	ccd 1	ccd 2	ccd 3	ccd 7
level 1 events	19459	18793	20357	20543	22547
rejected events	17462	16605	18477	18651	13646
rejected %	89%	88%	90%	90%	60%

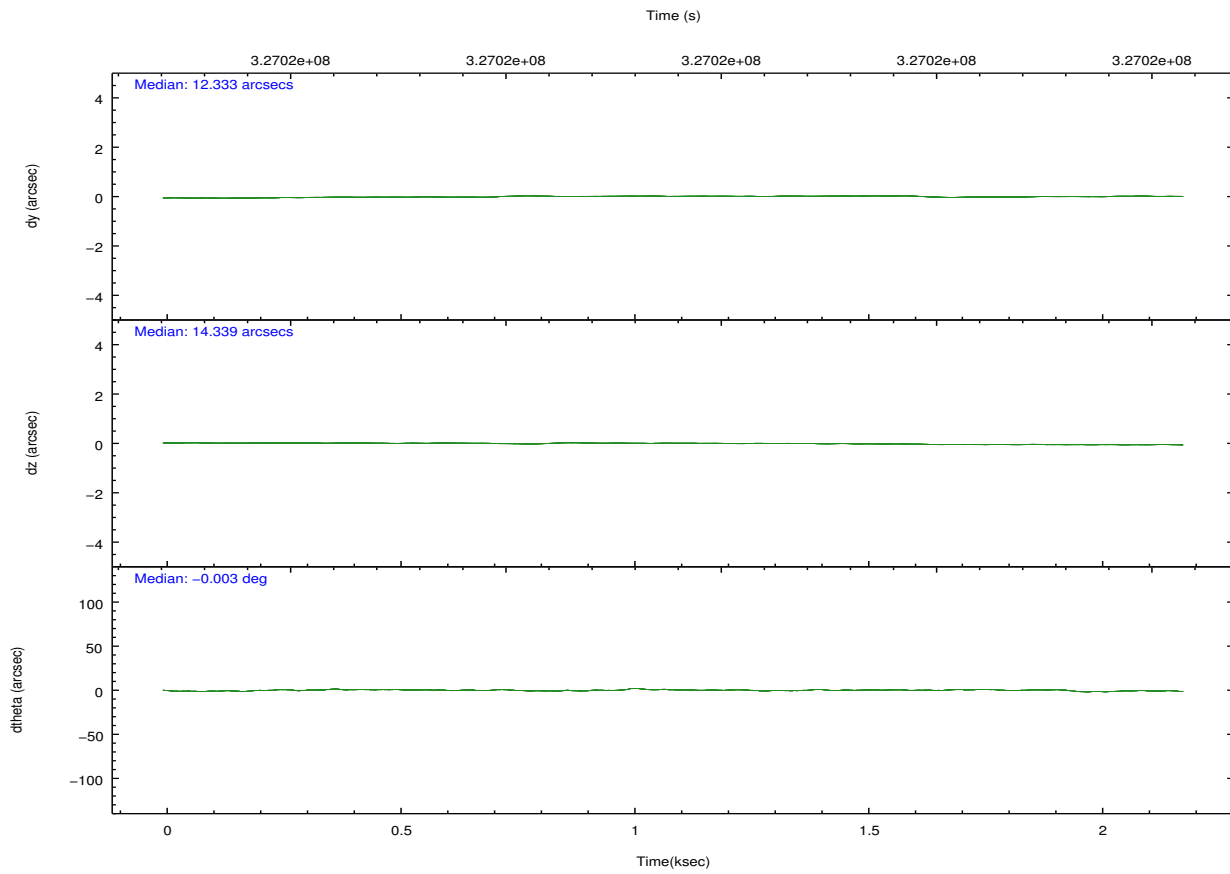
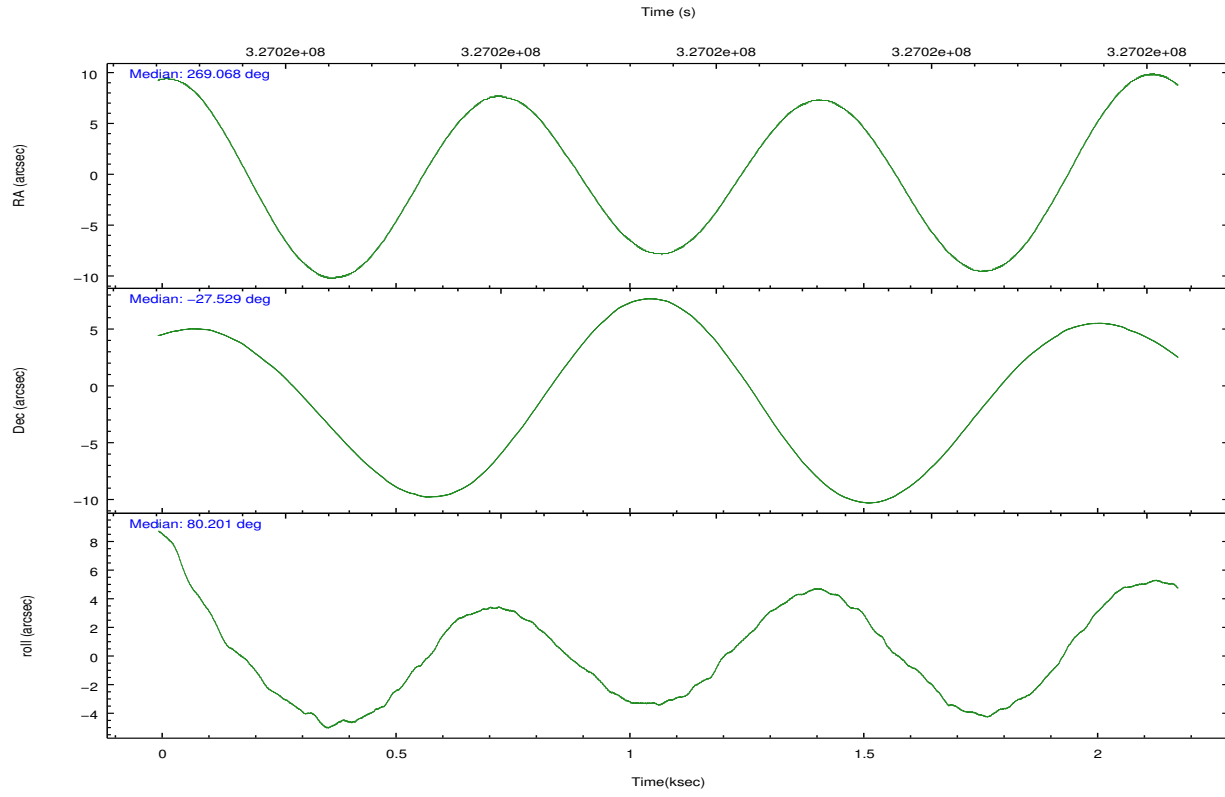
	ccd 0	ccd 1	ccd 2	ccd 3	ccd 7
grade 0 events	846	974	892	854	1042
	4%	5%	4%	4%	4%
grade 1 events	19	11	14	8	34
	0%	0%	0%	0%	0%
grade 2 events	576	523	493	429	2087
	2%	2%	2%	2%	9%
grade 3 events	254	274	199	234	931
	1%	1%	0%	1%	4%
grade 4 events	208	272	229	213	960
	1%	1%	1%	1%	4%
grade 5 events	717	782	656	846	2387
	3%	4%	3%	4%	10%
grade 6 events	420	470	346	419	5261
	2%	2%	1%	2%	23%
grade 7 events	16419	15487	17528	17540	9845
	84%	82%	86%	85%	43%

2.2 Compared Parameters

Parameter	Planned	Actual	Parameter	Planned	Actual
Instrument	ACIS	ACIS	Obspar format version number	7	7
Detector	ACIS-01237	ACIS-01237	Obspar file type	PREDICTED	ACTUAL
Grating	NONE	NONE	Obspar update status	NONE	UPDATED
Data mode	VFAINT	VFAINT	CCD I0 on	Y	Y
Observation mode	POINTING	POINTING	CCD I1 on	Y	Y
[deg] Pointing RA	269.079109	269.0683172957325	CCD I2 on	Y	Y
[deg] Pointing Dec	-27.555279	-27.52934444304294	CCD I3 on	Y	Y
[deg] Pointing Roll	80.004154	80.20786355230774	CCD S0 on	N	N
[mm] SIM focus pos	-0.782348	-0.7809083437167272	CCD S1 on	N	N
[mm] SIM defocus	0	0.001439871863259334	CCD S2 on	N	N
[mm] SIM translation stage pos	-233.592463	-233.5874344608287	CCD S3 on	O1	Y
[mm] SIM translation stage offset	0	-0.005018542100998502	CCD S4 on	N	N
[s] Observation start time (MET)	327020972.184000	327020596.31114	CCD S5 on	N	N
Observation start date	2008-05-12T23:08:27	2008-05-12T23:03:16	Number of optional ACIS chips dropped	0	0
[s] Observation end time (MET)	327022972.184000	327023105.51126	On-chip summing requested	N	N
Observation end date	2008-05-12T23:41:47	2008-05-12T23:45:05	Subarray requested	NONE	NONE
Read mode	TIMED	TIMED	Alternating exposures requested	N	N
			[s] Primary exposure time	0.000000	3.1

2.3 Aspect



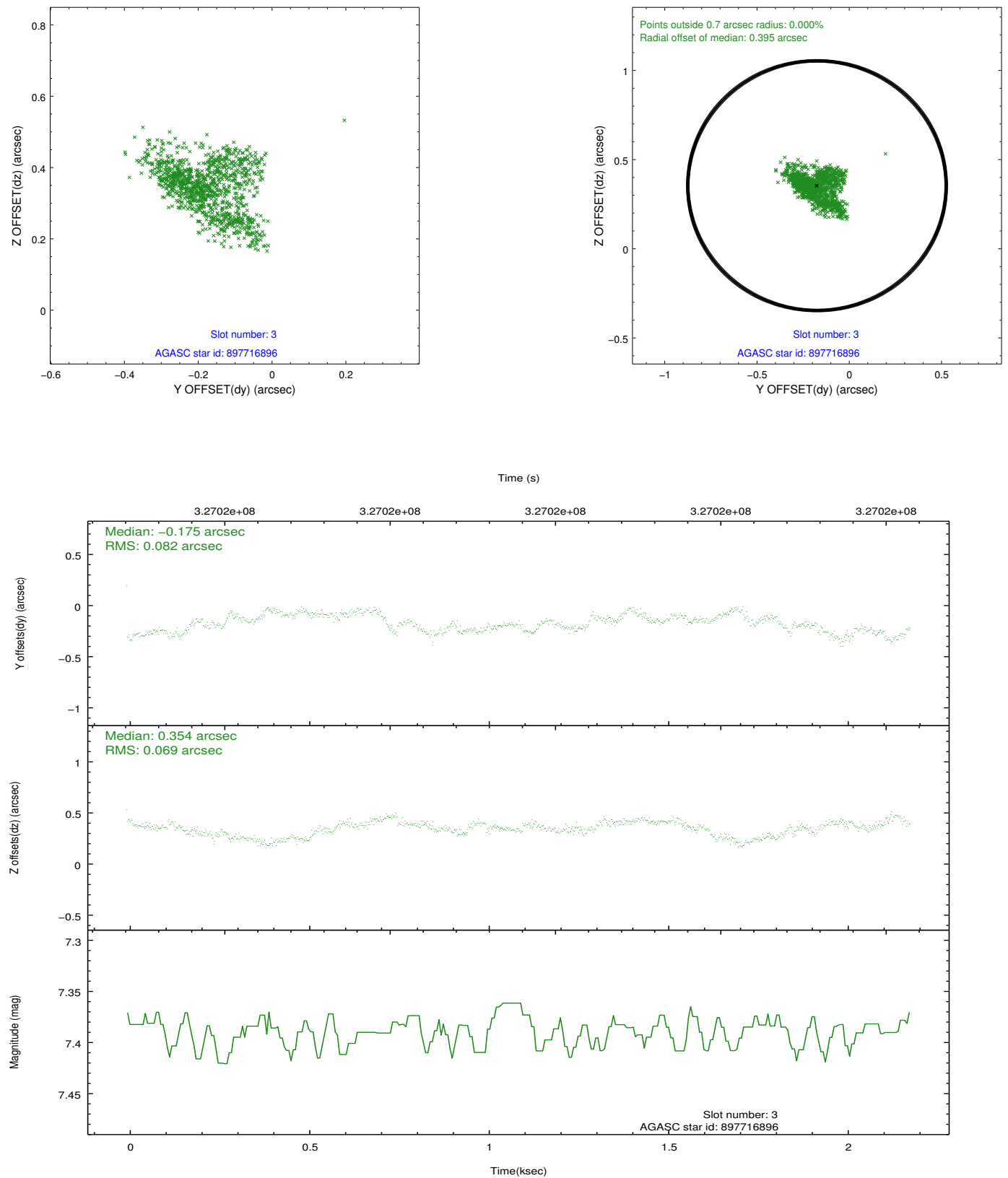


Slot Statistics

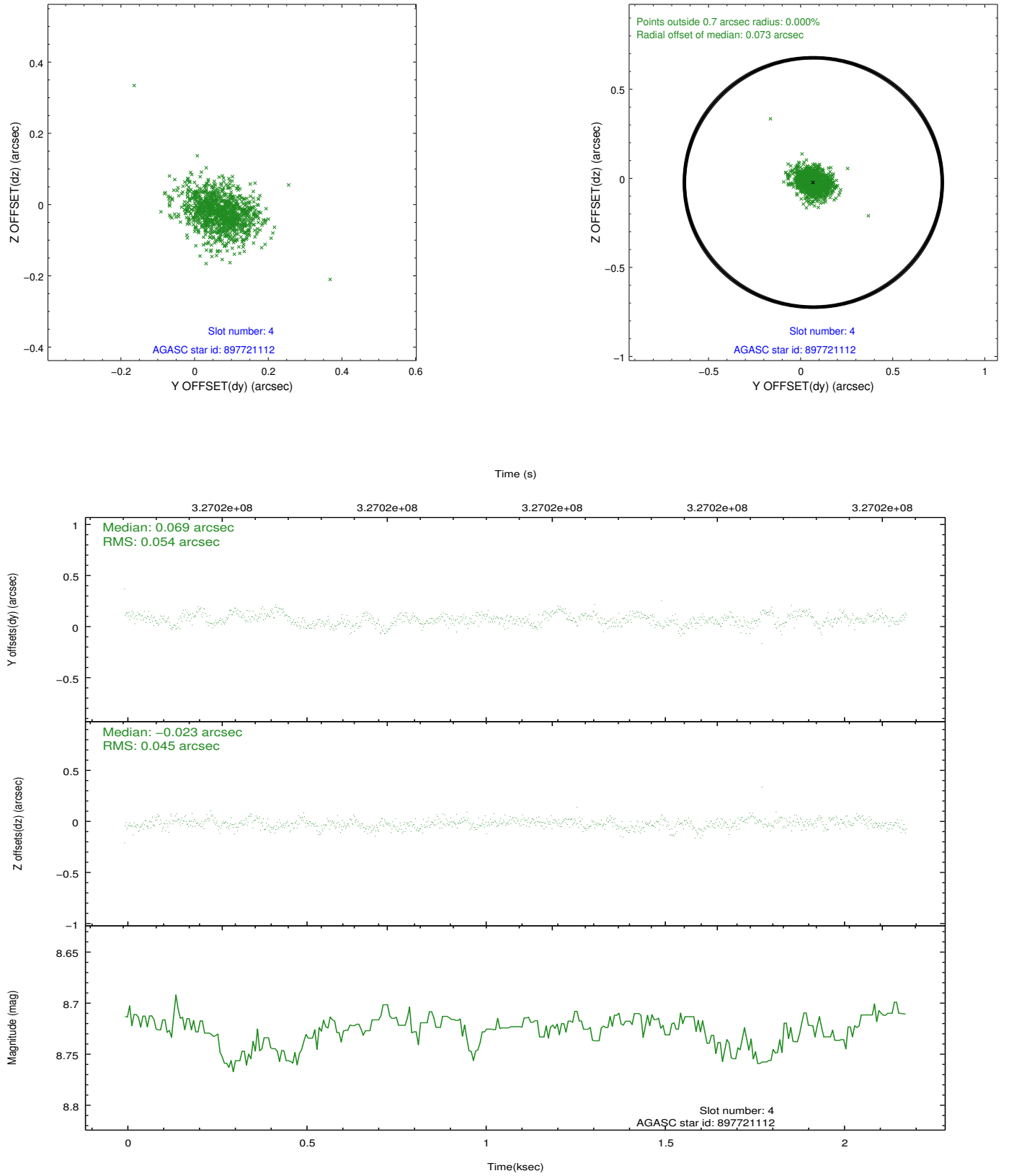
slot	status	id	mag	n_pts	med_dy	med_dz	dr1	dr2	ra	dec	mean_y	mean_z
0	FID	ACIS-I-1	7.00	532	-0.006	0.038	0.007	0.015	0.000000	0.000000	927.21	-837.86
1	FID	ACIS-I-5	6.99	533	-0.149	0.021	0.007	0.013	0.000000	0.000000	-1819.41	1058.08
2	FID	ACIS-I-6	7.00	532	0.064	0.012	0.007	0.010	0.000000	0.000000	389.54	1705.99
3	GUIDE	897716896	7.39	1065	-0.175	0.354	0.113	0.183	269.902616	-27.069631	2171.06	-2297.14
4	GUIDE	897721112	8.72	1065	0.069	-0.023	0.074	0.122	268.338159	-28.057278	-2194.09	2001.11
5	GUIDE	897720600	8.26	1065	0.069	-0.242	0.085	0.142	268.319864	-27.628963	-691.89	2339.37
6	GUIDE	897717760	7.25	1065	-0.079	-0.354	0.070	0.110	268.392593	-27.282645	577.80	2334.59
7	GUIDE	898236888	8.72	1064	0.130	0.265	0.081	0.138	269.539947	-28.141730	-1827.65	-1805.28

2.4 Star Slots

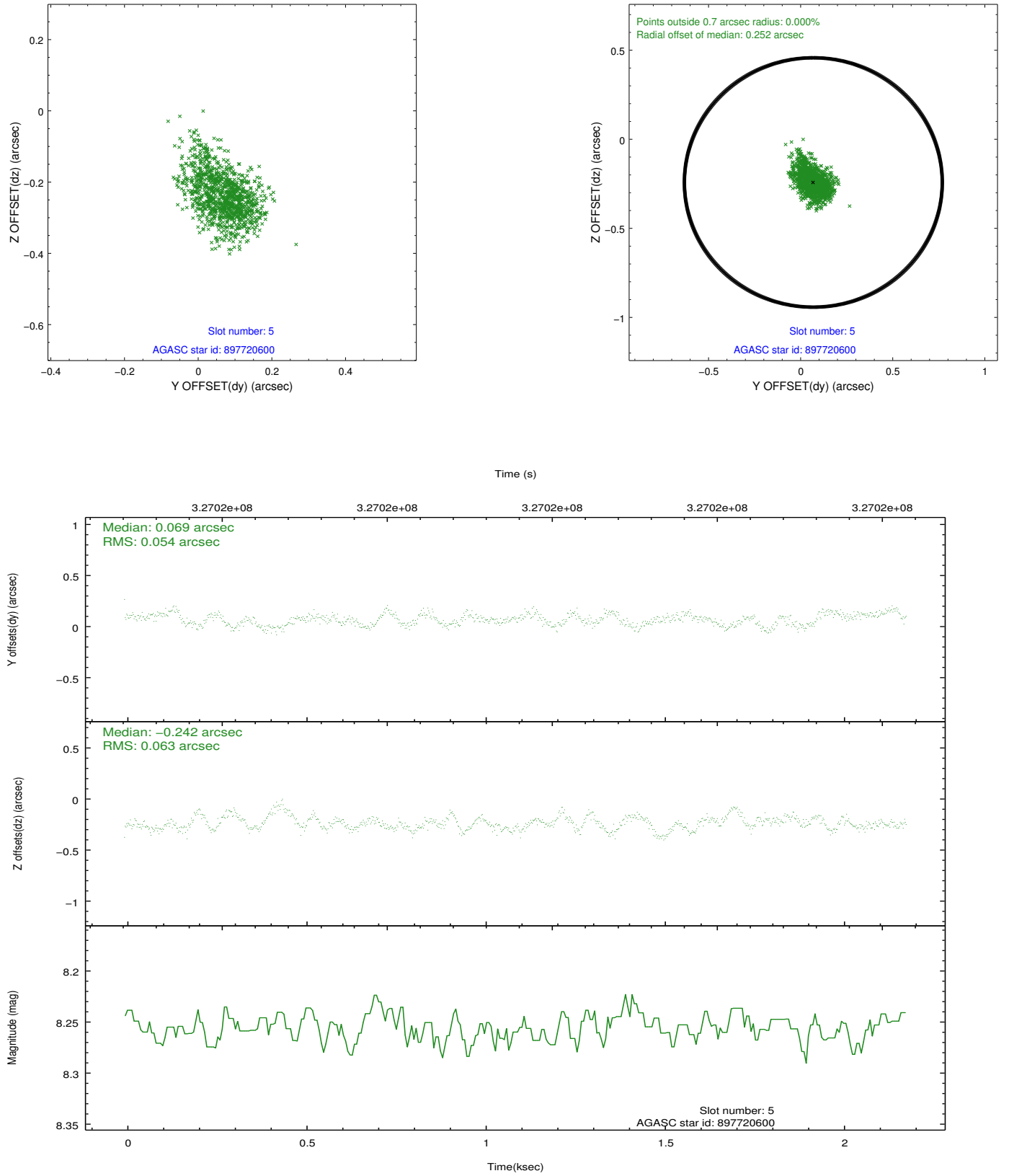
2.4.1 Slot 3



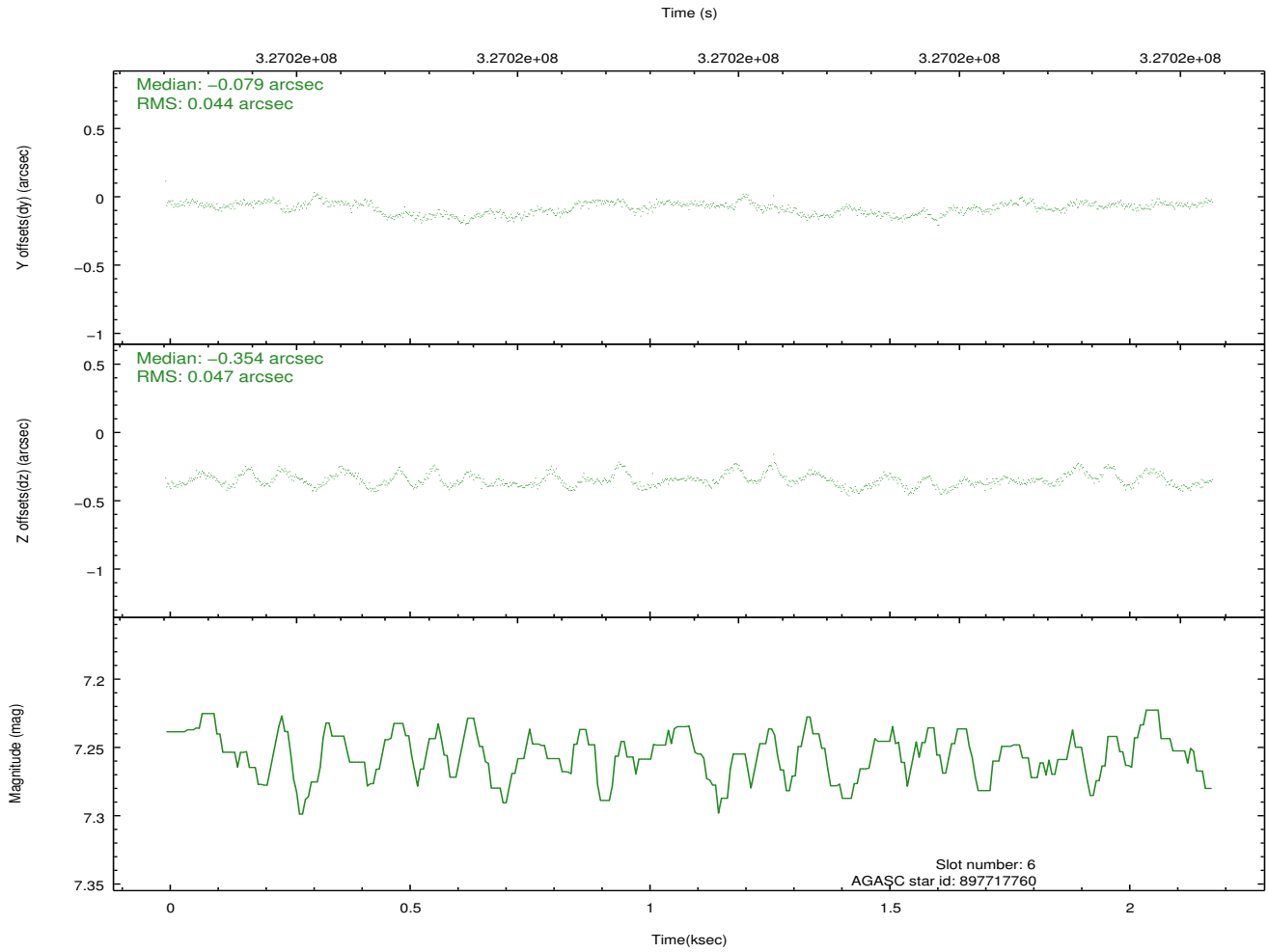
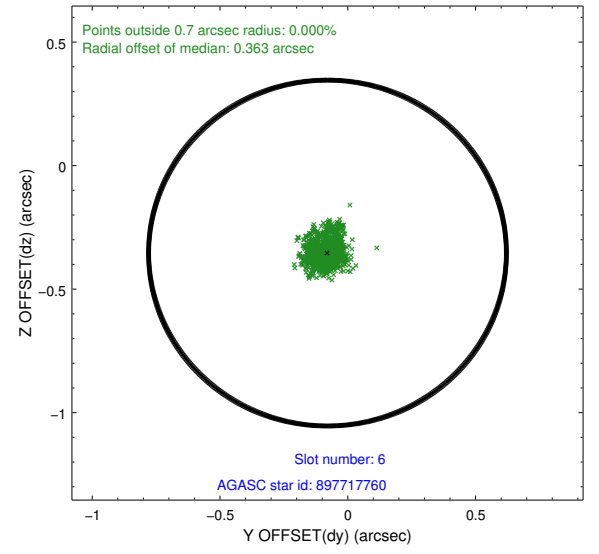
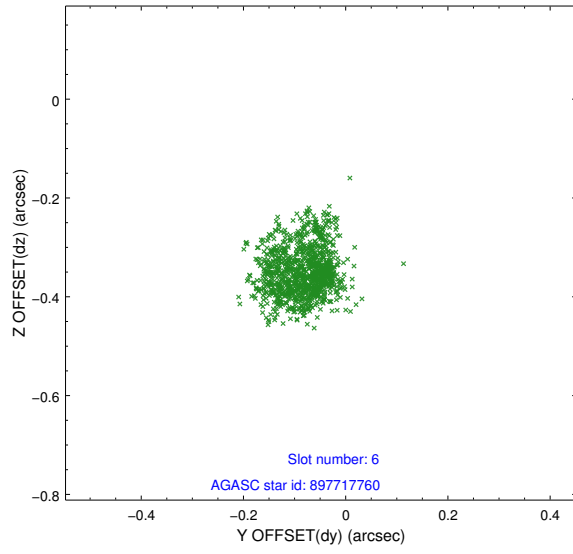
2.4.2 Slot 4



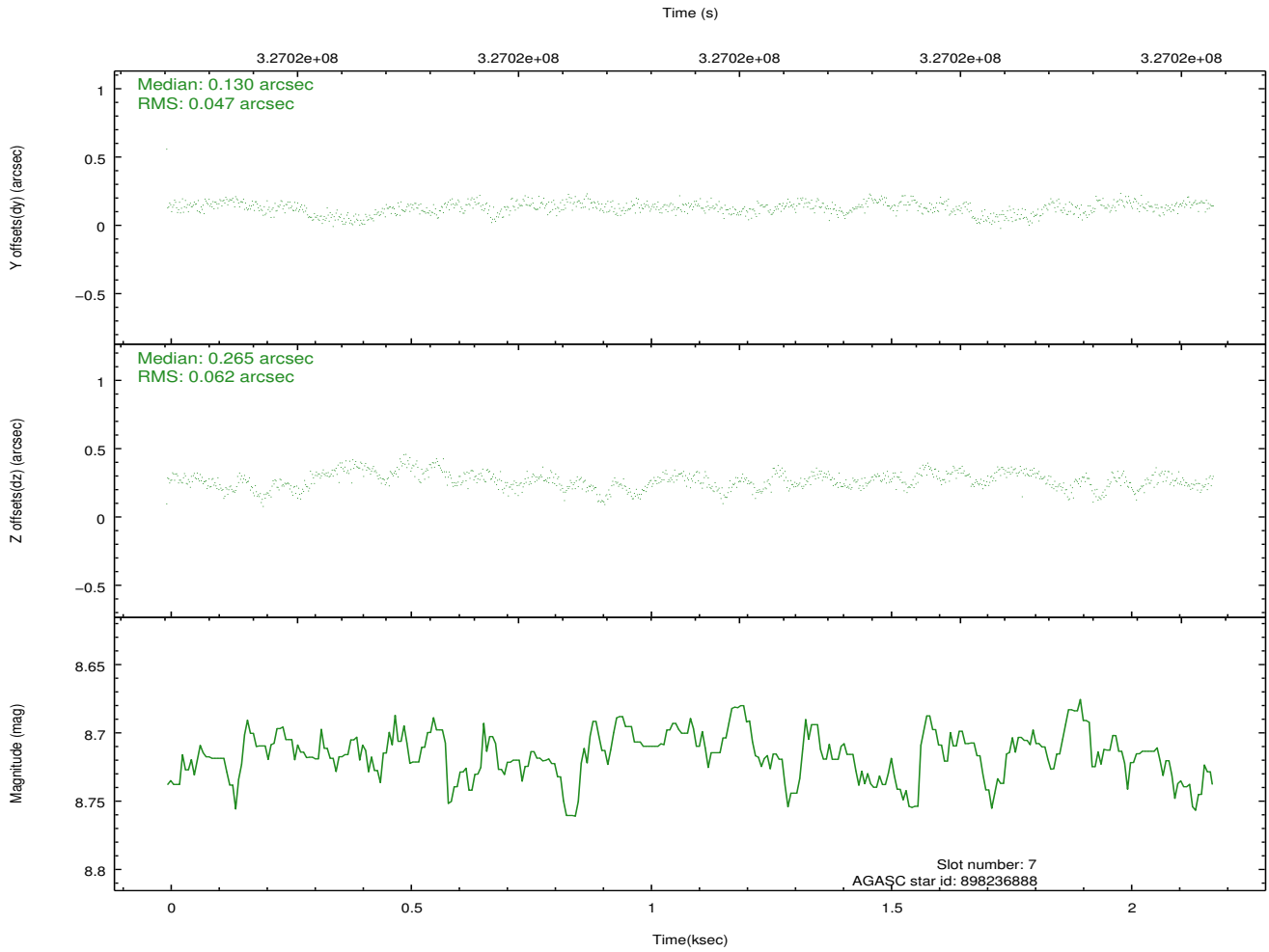
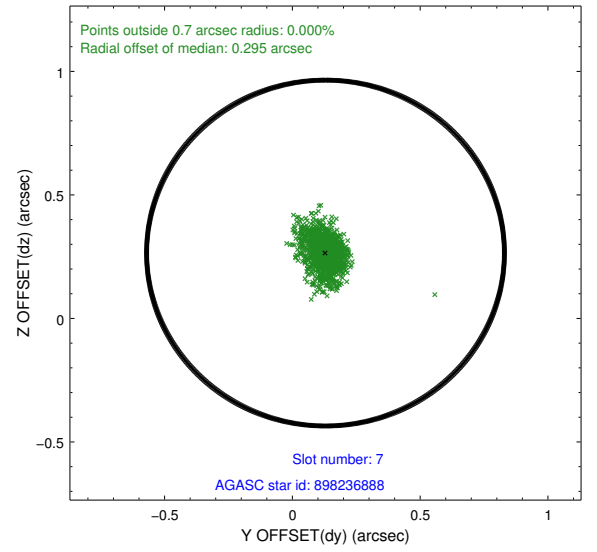
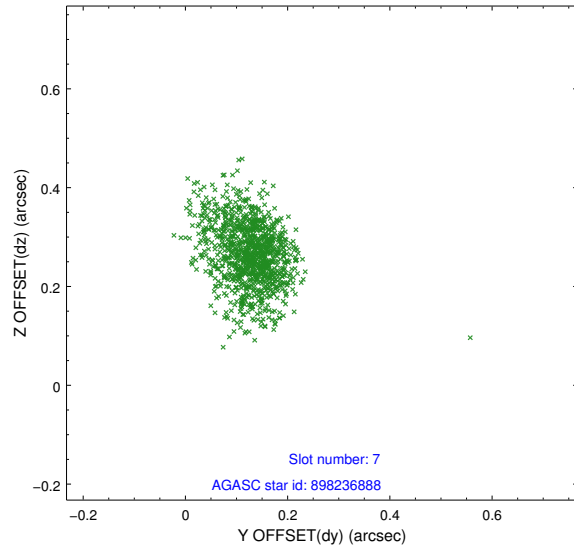
2.4.3 Slot 5



2.4.4 Slot 6

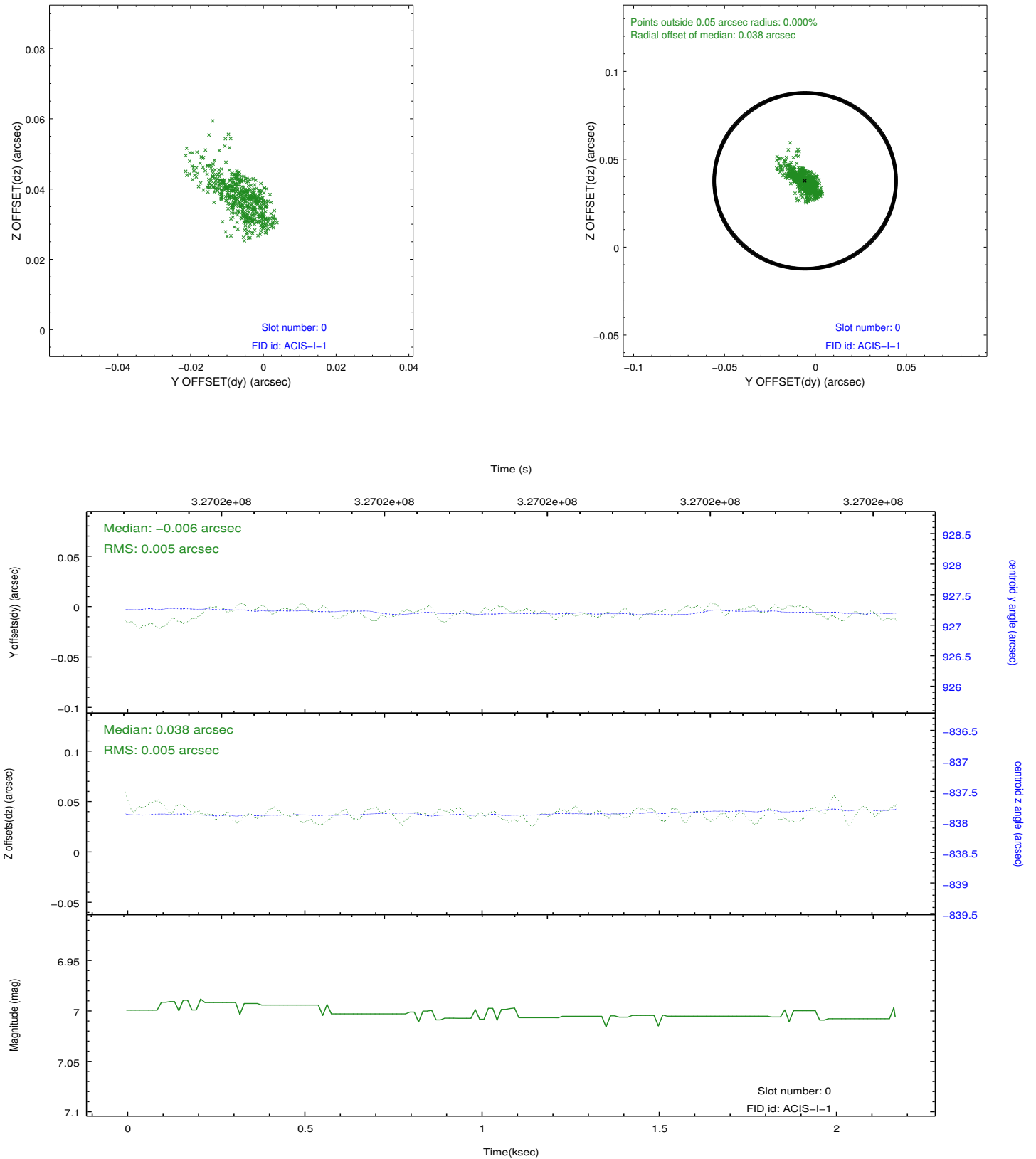


2.4.5 Slot 7

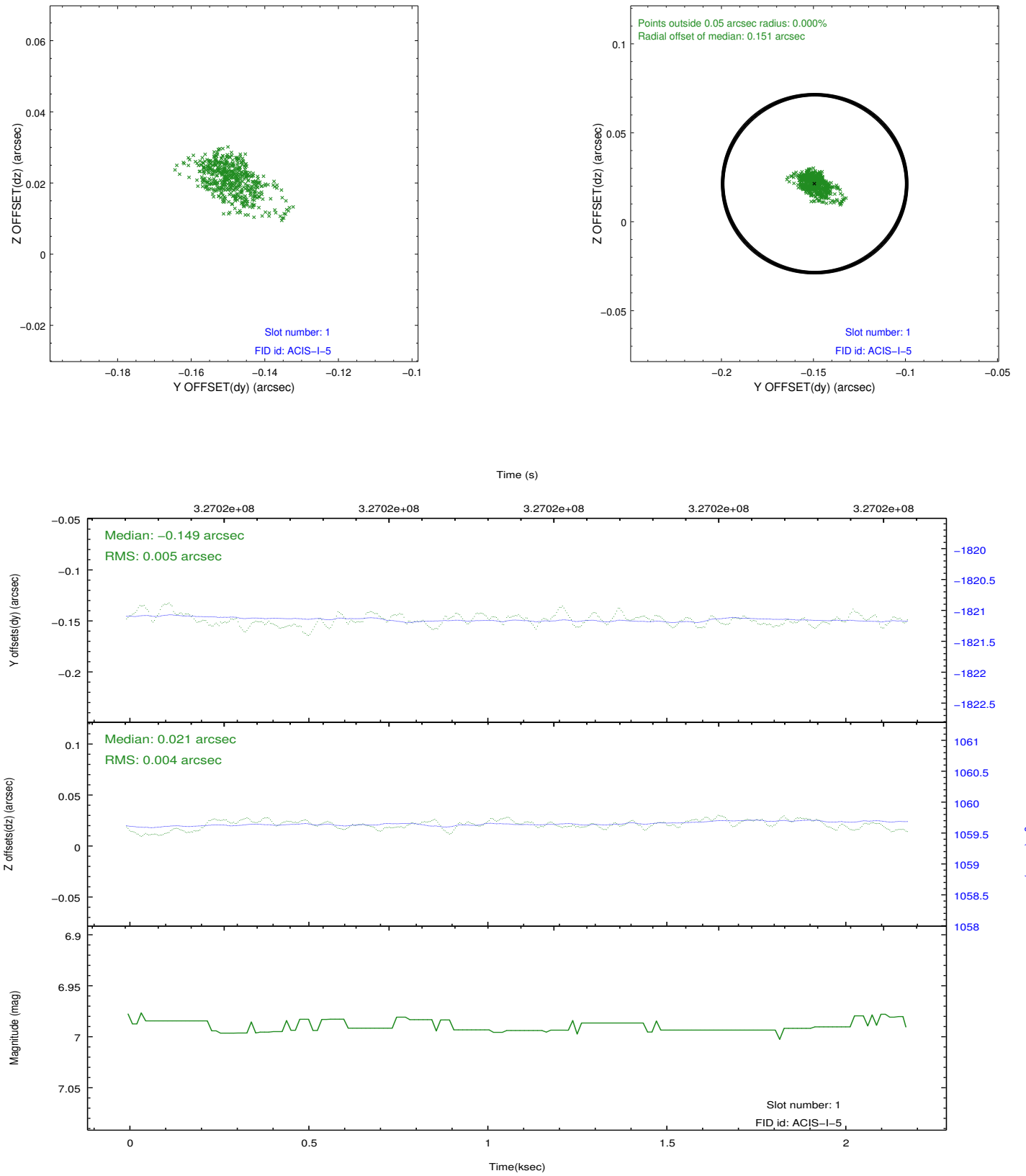


2.5 FID Slots

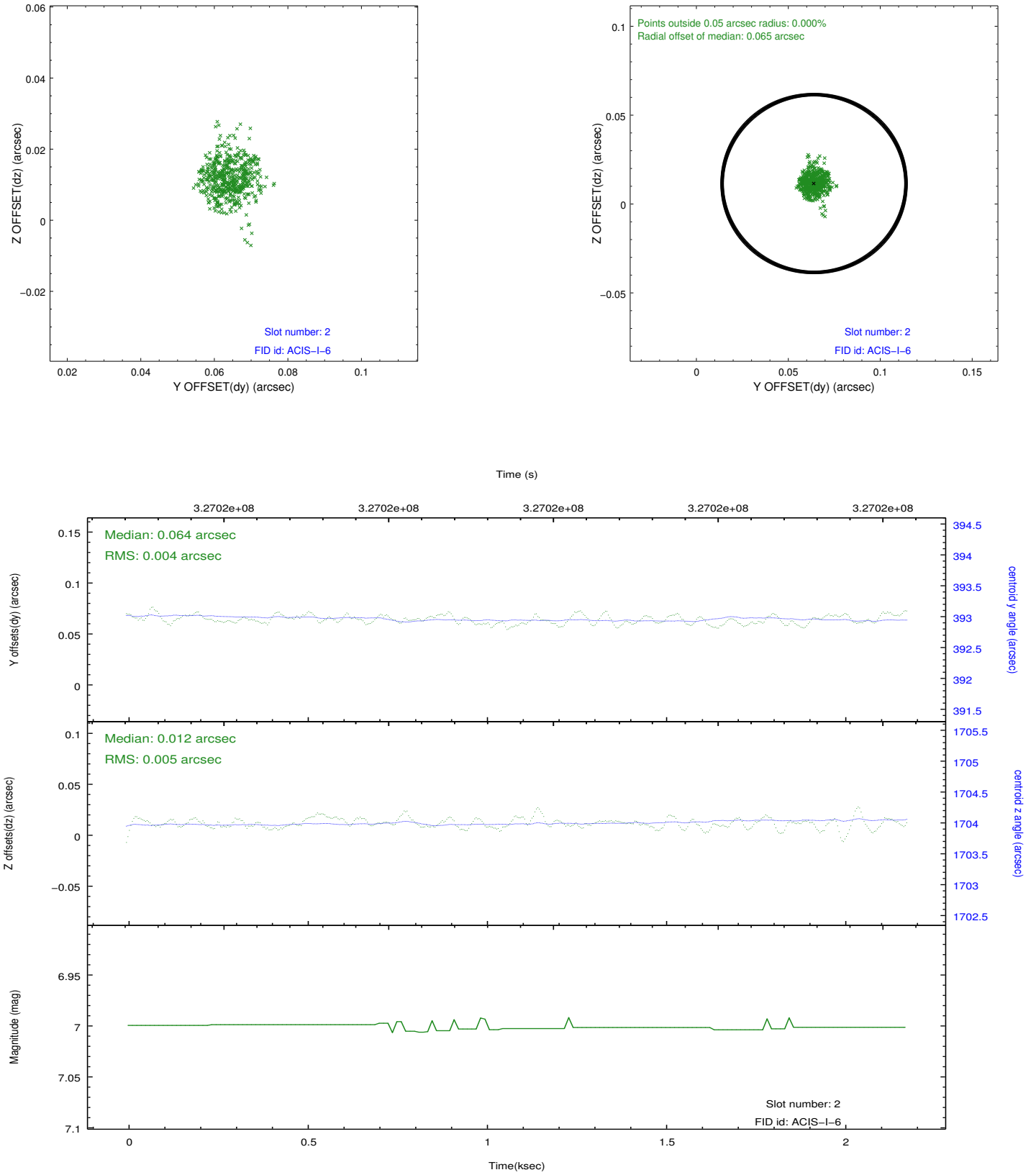
2.5.1 Slot 0



2.5.2 Slot 1



2.5.3 Slot 2



A Summary

A.1 Status

V&V Scientist	Beth Sundheim
V&V Date (YYYY-MM-DD)	2012.05.16
V&V Edition	1
V&V Disposition and Status	OK
V&V Charge Time	2.18240001

A.2 Comments

Joint proposal with NOAO.