

V&V Reference Report

L2 ASCDS Version : 8.4.4

Observation 7849 - L2 Version 2
Chandra X-Ray Center

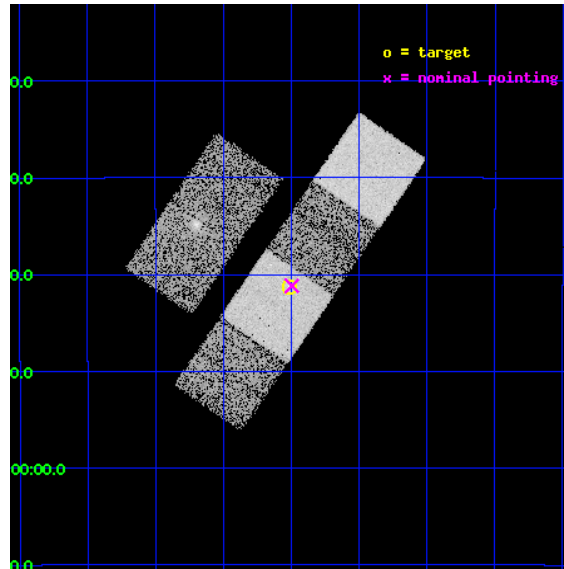
L2 Processing Date : Apr 27 2012

Contents

1	Front	2
2	OBI	3
2.1	OBI	3
2.1.1	Images	3
2.1.2	Bias	3
2.1.3	Parameters	4
2.1.4	Events	4
2.2	Compared Parameters	5
2.3	Aspect	6
2.4	Star Slots	9
2.4.1	Slot 3	9
2.4.2	Slot 4	10
2.4.3	Slot 5	11
2.4.4	Slot 6	12
2.4.5	Slot 7	13
2.5	FID Slots	14
2.5.1	Slot 0	14
2.5.2	Slot 1	15
2.5.3	Slot 2	16
A	Summary	17
A.1	Status	17
A.2	Comments	17

1 Front

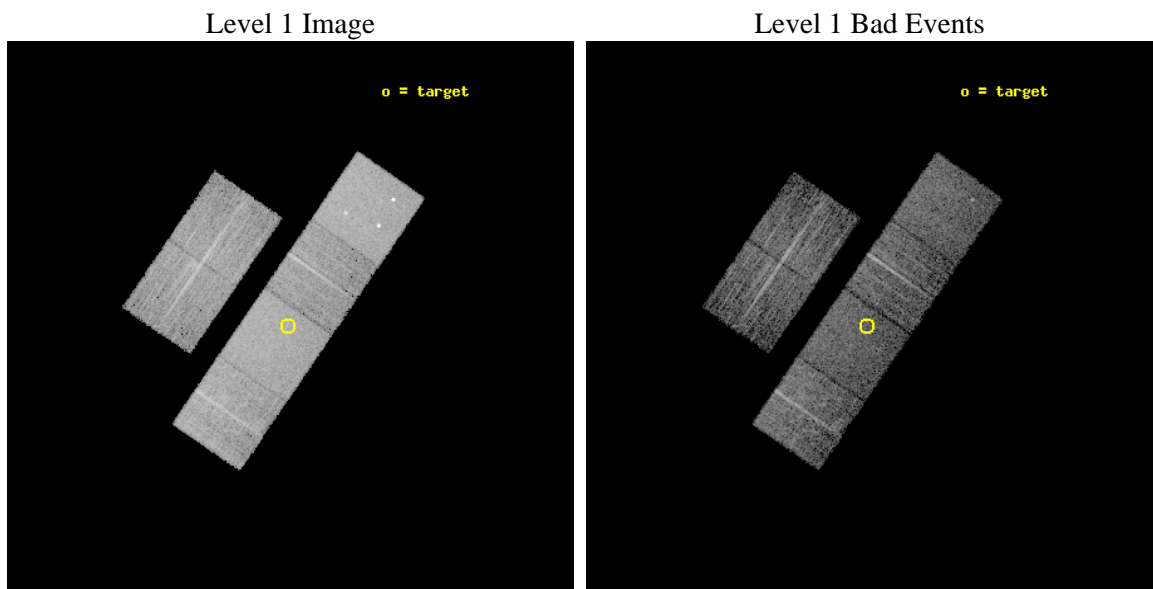
seq_num	701513	Sequence number
obs_id	7849	Observation id
title	Demographics of black holes in the local Universe.	Proposal title
observer	Prof. Smita Mathur	Principal investigator
object	NGC 1400	Source name
dtcycle	0	
cycle	P	events from which exps? Prim/Second/Both
ra_targ	54.878333	Observer's specified target RA [deg]
dec_targ	-18.688167	Observer's specified target Dec [deg]
ra_nom	54.873650184177	Nominal RA [deg]
dec_nom	-18.686266252262	Nominal Dec [deg]
roll_nom	124.45381604712	Nominal Roll [deg]
revision	2	Processing version of data
ontime	4956.7999815941	Sum of GTIs [s]
livetime	4894.0339956005	Livetime [s]
ontime2	4953.5589913726	Sum of GTIs [s]
ontime3	4956.7999815941	Sum of GTIs [s]
ontime5	4956.7999815941	Sum of GTIs [s]
ontime6	4937.3541597724	Sum of GTIs [s]
ontime7	4956.7999815941	Sum of GTIs [s]
ontime8	4953.5590112209	Sum of GTIs [s]
l2events	80901	Number of level 2 events



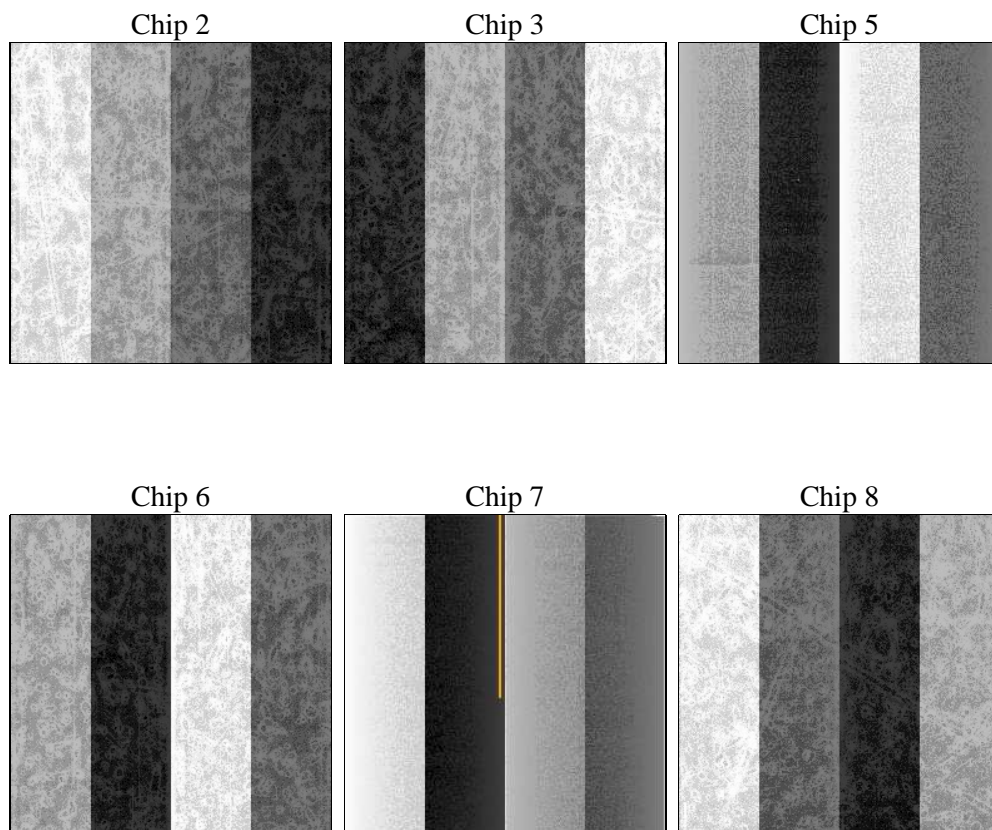
2 OBI

2.1 OBI

2.1.1 Images



2.1.2 Bias



2.1.3 Parameters

obi_num	0	Obi number	sched_exp_time	5000.000000	[s] Scheduled observation exposure time
ascdsver	8.4.4	Processing system revision	ontime	4956.7999815941	Sum of GTIs [s]
caldbver	4.4.9	 	ontime2	4953.5589913726	Sum of GTIs [s]
date	2012-04-28T00:08:36	Date and time of file creation	ontime3	4956.7999815941	Sum of GTIs [s]
revision	2	Processing version of data	ontime5	4956.7999815941	Sum of GTIs [s]
			ontime6	4937.3541597724	Sum of GTIs [s]
			ontime7	4956.7999815941	Sum of GTIs [s]
			ontime8	4953.5590112209	Sum of GTIs [s]
			l1events	347067	Number of level 1 events

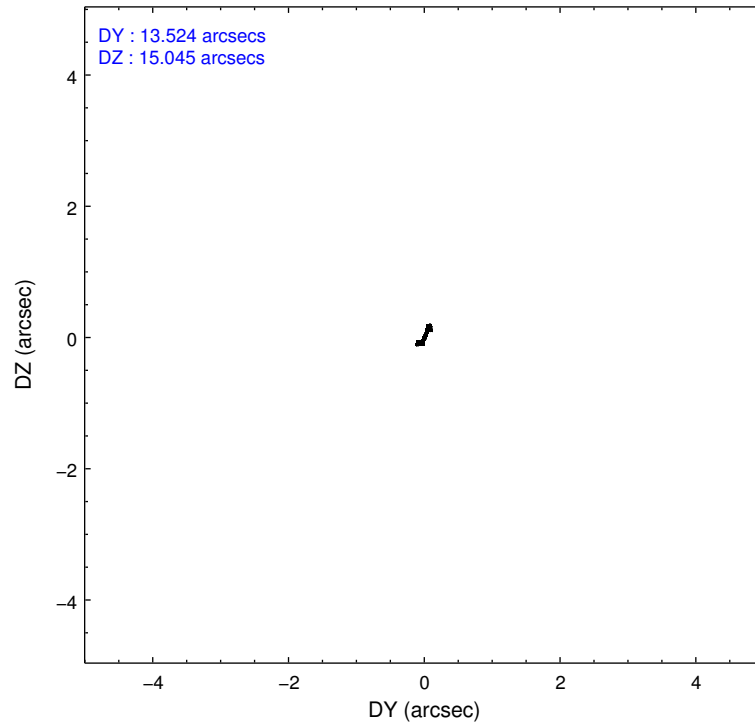
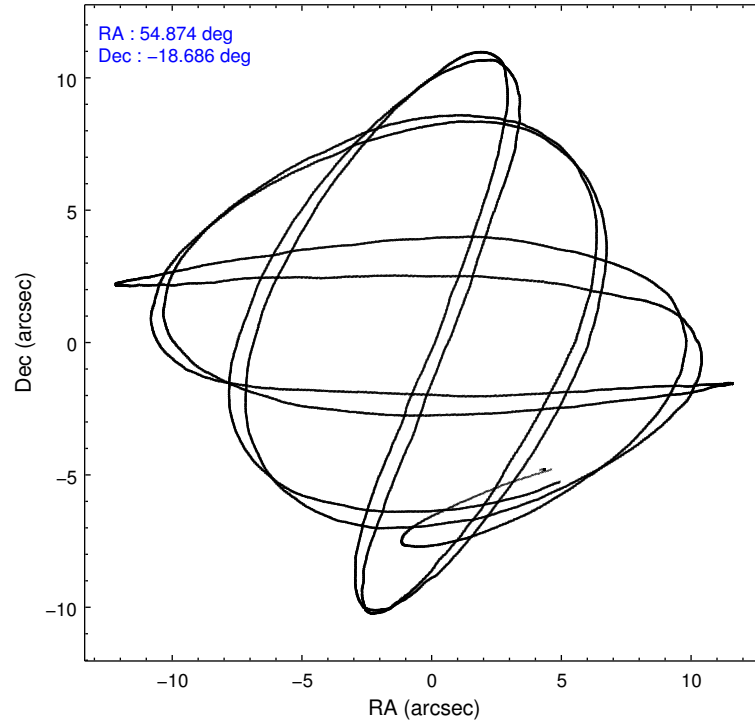
2.1.4 Events

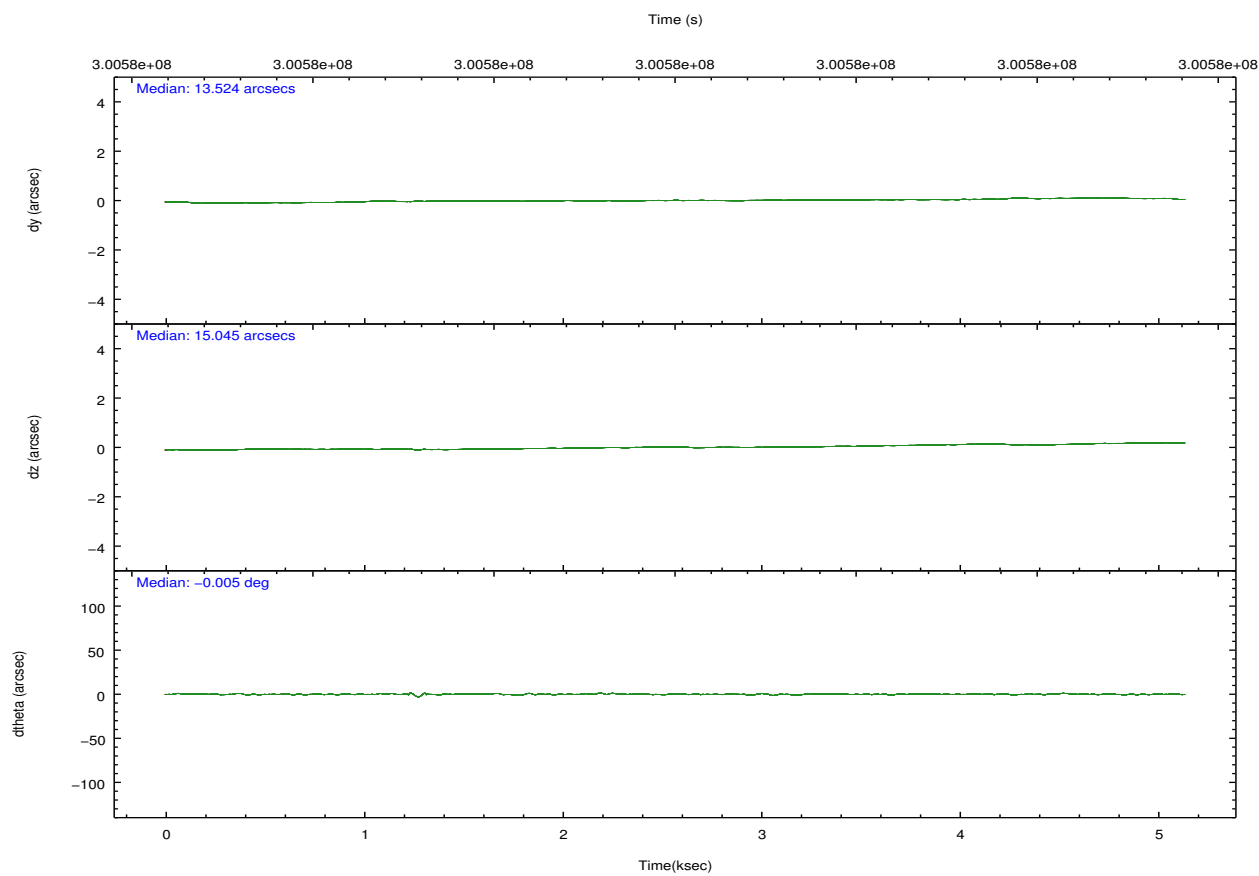
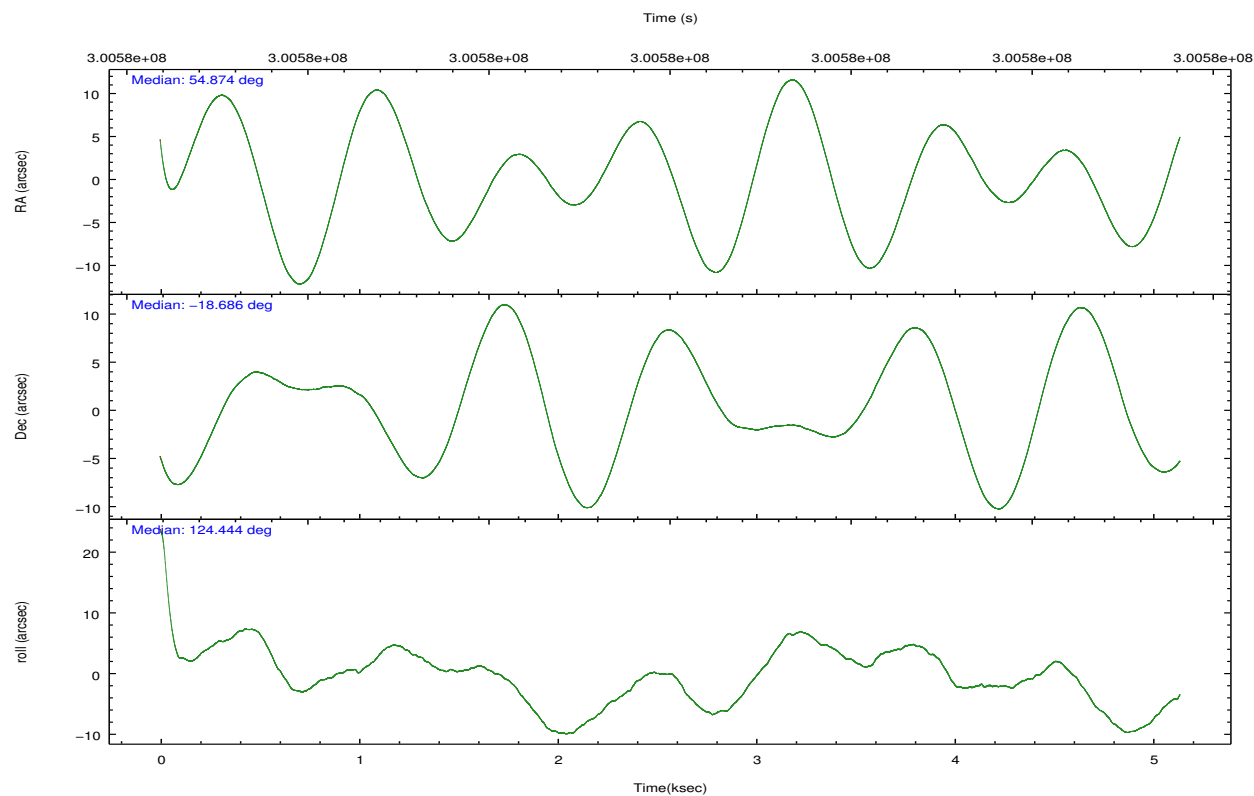
	ccd 2	ccd 3	ccd 5	ccd 6	ccd 7	ccd 8		ccd 2	ccd 3	ccd 5	ccd 6	ccd 7	ccd 8
level 1 events	49651	46888	75678	47379	65613	61858	grade 0 events	2775	3220	4683	2380	2469	4391
rejected events	43610	40402	39961	41502	37768	48523		5%	6%	6%	5%	3%	7%
rejected %	87%	86%	52%	87%	57%	78%	grade 1 events	34	42	289	22	66	43
								0%	0%	0%	0%	0%	0%
							grade 2 events	1259	1236	10749	1273	5680	2999
								2%	2%	14%	2%	8%	4%
							grade 3 events	501	548	1307	536	2522	1378
								1%	1%	1%	1%	3%	2%
							grade 4 events	524	525	1162	519	2385	1315
								1%	1%	1%	1%	3%	2%
							grade 5 events	1865	2174	5268	2179	6093	2970
								3%	4%	6%	4%	9%	4%
							grade 6 events	985	960	17843	1173	14805	3261
								1%	2%	23%	2%	22%	5%
							grade 7 events	41708	38183	34377	39297	31593	45501
								84%	81%	45%	82%	48%	73%

2.2 Compared Parameters

Parameter	Planned	Actual	Parameter	Planned	Actual
Instrument	ACIS	ACIS	Obspar format version number	7	7
Detector	ACIS-235678	ACIS-235678	Obspar file type	PREDICTED	ACTUAL
Grating	NONE	NONE	Obspar update status	NONE	UPDATED
Data mode	FAINT	FAINT	Number of optional ACIS chips dropped	0	0
Observation mode	POINTING	POINTING	On-chip summing requested	N	N
[deg] Pointing RA	54.899860	54.87365018417655	Subarray requested	NONE	NONE
[deg] Pointing Dec	-18.697655	-18.68626625226232	Alternating exposures requested	N	N
[deg] Pointing Roll	124.305543	124.4538160471243	[s] Primary exposure time	0.000000	3.2
[mm] SIM focus pos	-0.684267	-0.6828225247311905			
[mm] SIM defocus	0	0.001444936568705701			
[mm] SIM translation stage pos	-190.132523	-190.1400660498719			
[mm] SIM translation stage offset	0	0.00754346686406393			
[s] Observation start time (MET)	300577572.184000	300576463.71988			
Observation start date	2007-07-11T21:45:07	2007-07-11T21:27:43			
[s] Observation end time (MET)	300582572.184000	300583426.54522			
Observation end date	2007-07-11T23:08:27	2007-07-11T23:23:46			
Read mode	TIMED	TIMED			

2.3 Aspect



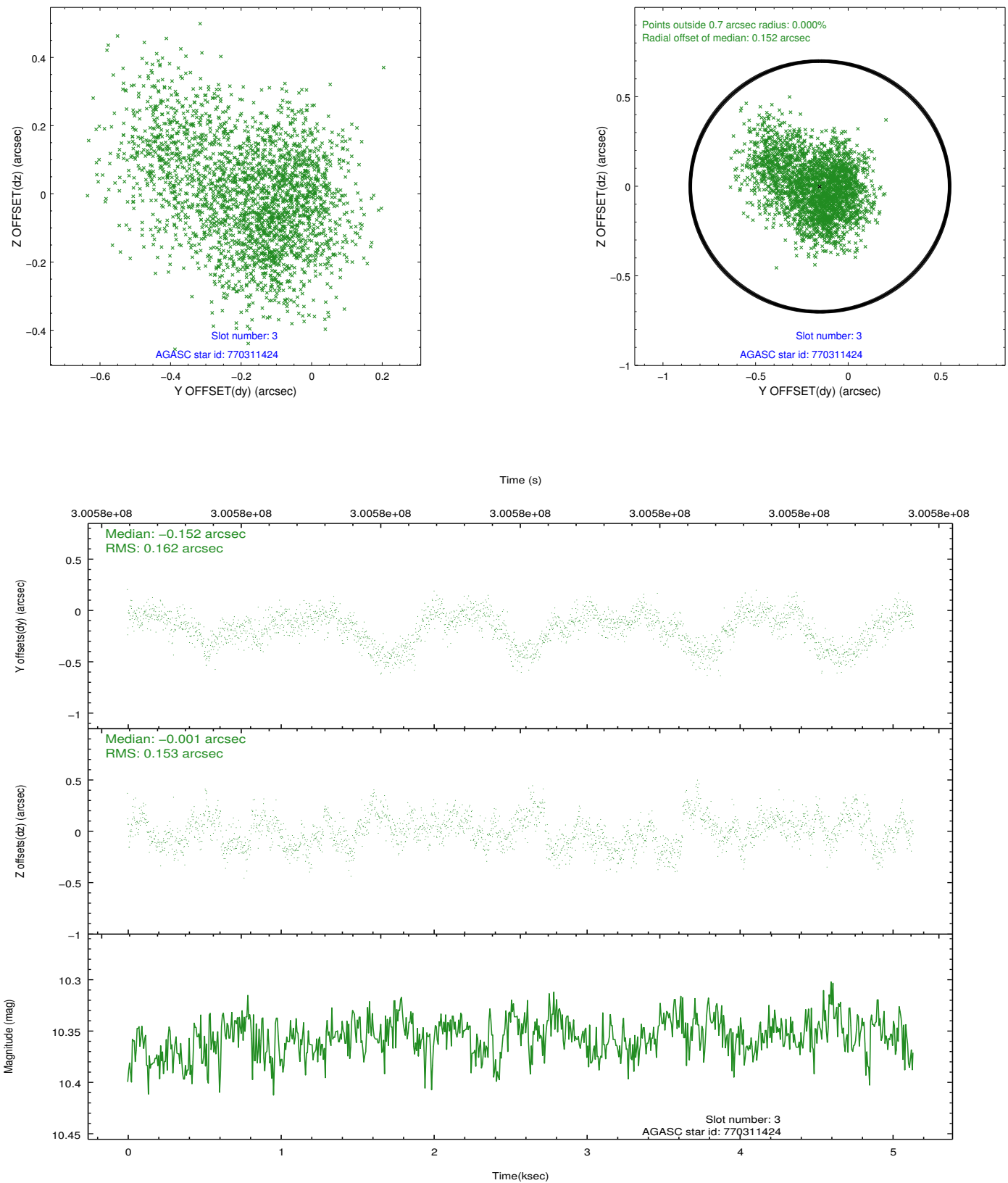


Slot Statistics

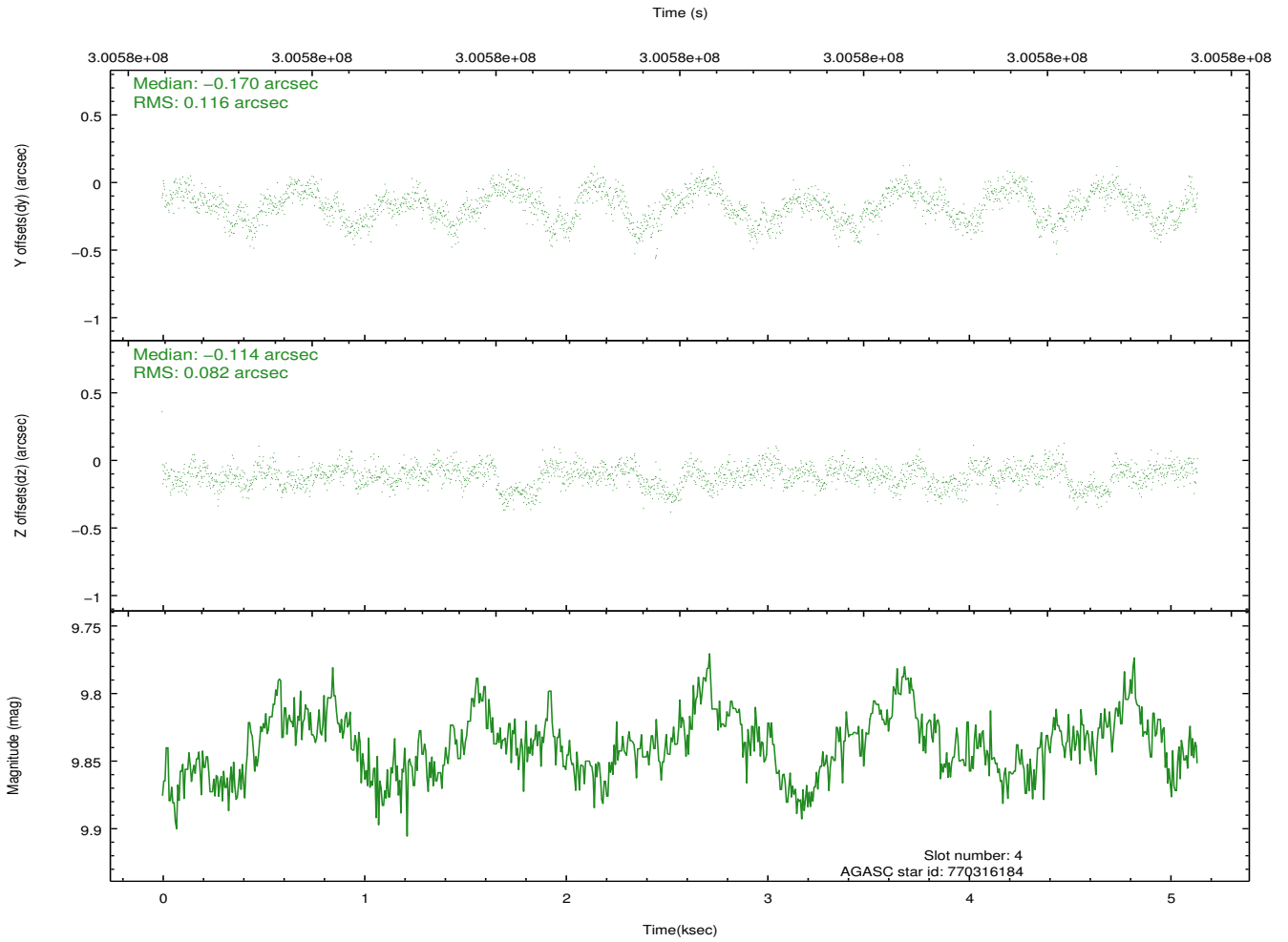
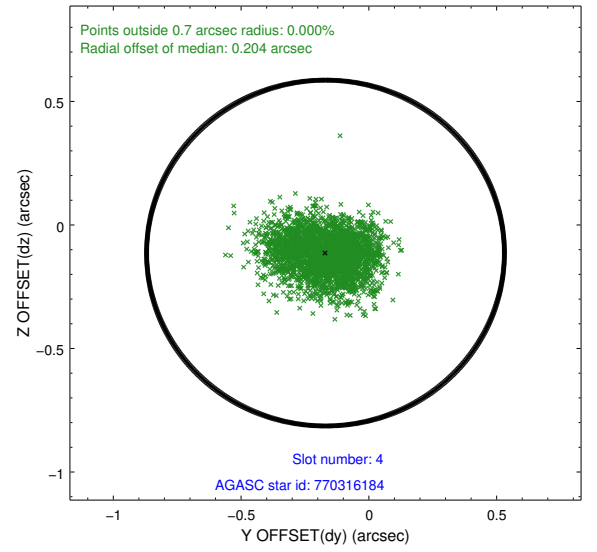
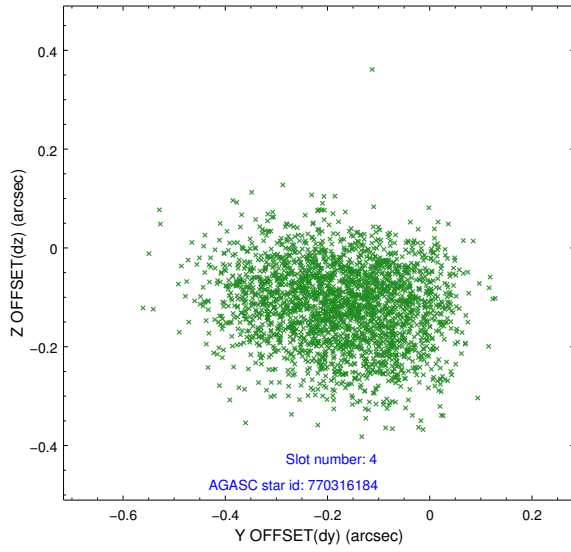
slot	status	id	mag	n_pts	med_dy	med_dz	dr1	dr2	ra	dec	mean_y	mean_z
0	FID	ACIS-S-2	7.09	1254	-0.063	-0.036	0.007	0.011	0.000000	0.000000	-766.49	-1736.49
1	FID	ACIS-S-4	7.19	1254	0.202	0.040	0.006	0.010	0.000000	0.000000	2146.48	170.89
2	FID	ACIS-S-5	7.22	1253	-0.170	0.005	0.007	0.011	0.000000	0.000000	-1817.96	165.81
3	GUIDE	770311424	10.36	2498	-0.152	-0.001	0.237	0.384	55.229950	-18.396118	260.89	-1542.77
4	GUIDE	770316184	9.84	2504	-0.170	-0.114	0.154	0.240	54.092251	-18.507384	2114.72	1894.42
5	GUIDE	770318936	9.59	2503	0.095	-0.185	0.160	0.245	54.476249	-19.111423	-418.68	2031.16
6	GUIDE	770319584	7.72	2505	0.047	-0.041	0.071	0.113	54.878150	-18.998334	-852.40	671.20
7	GUIDE	770311544	9.58	2502	0.229	0.355	0.126	0.205	55.527551	-18.503628	-633.30	-2161.24

2.4 Star Slots

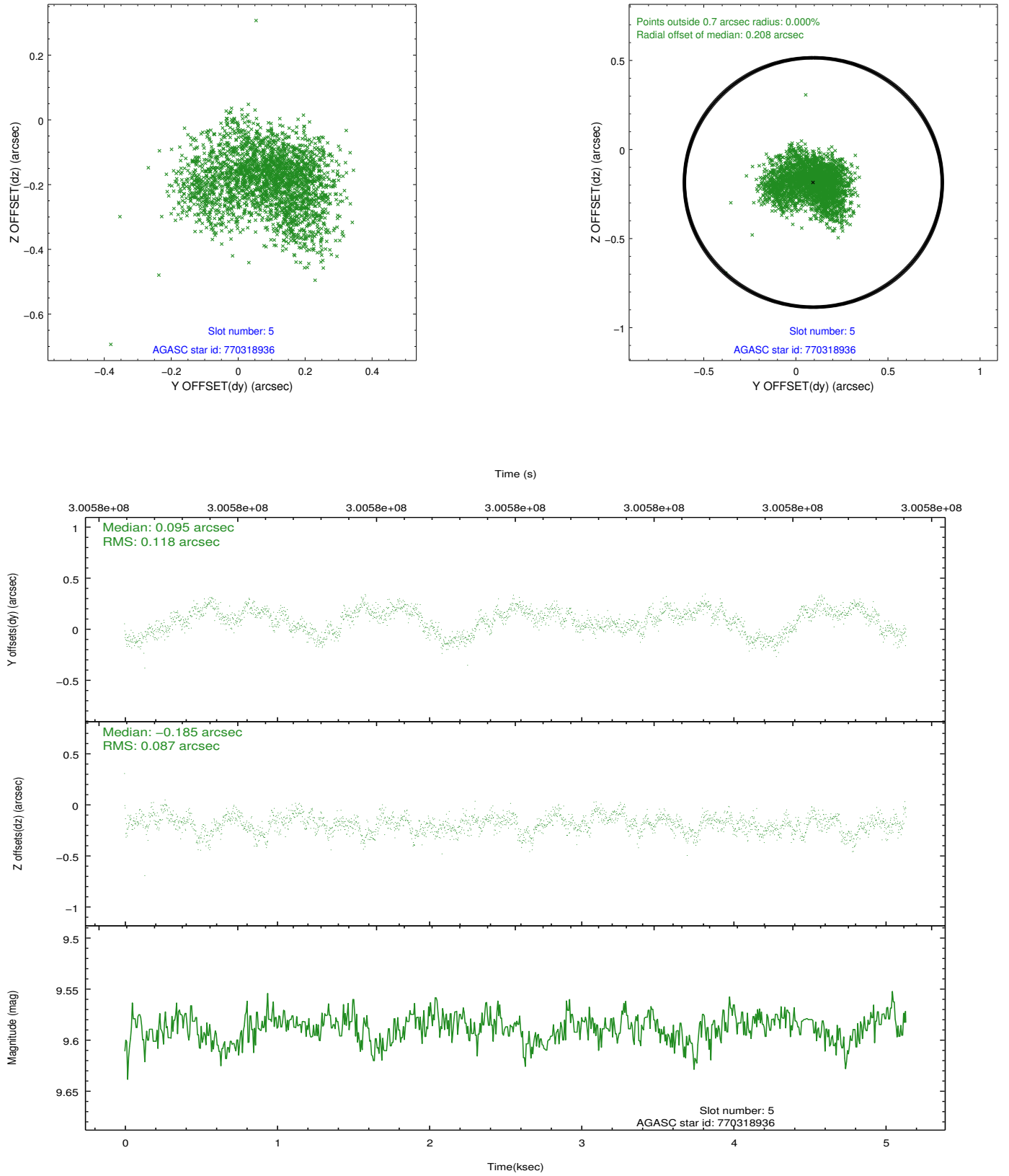
2.4.1 Slot 3



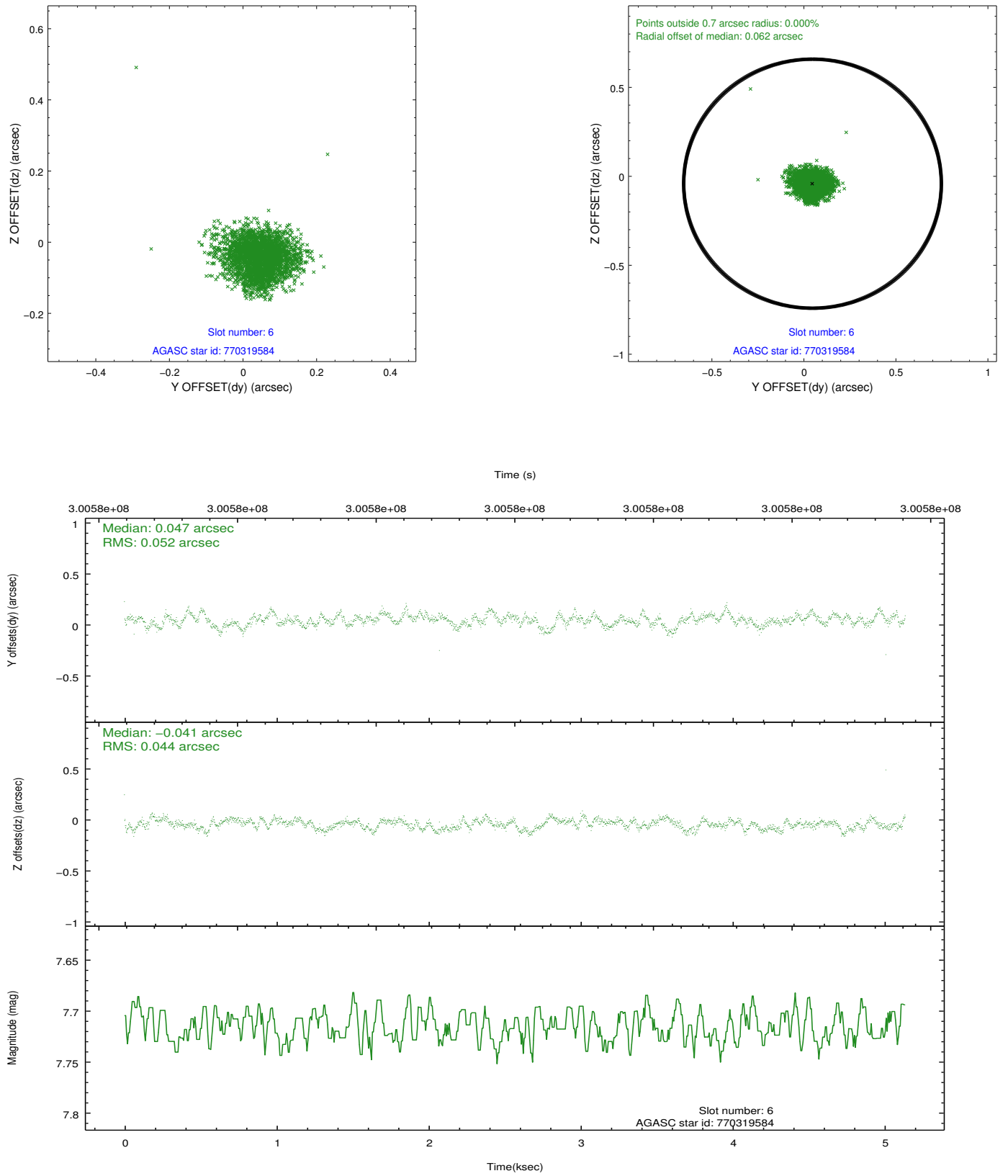
2.4.2 Slot 4



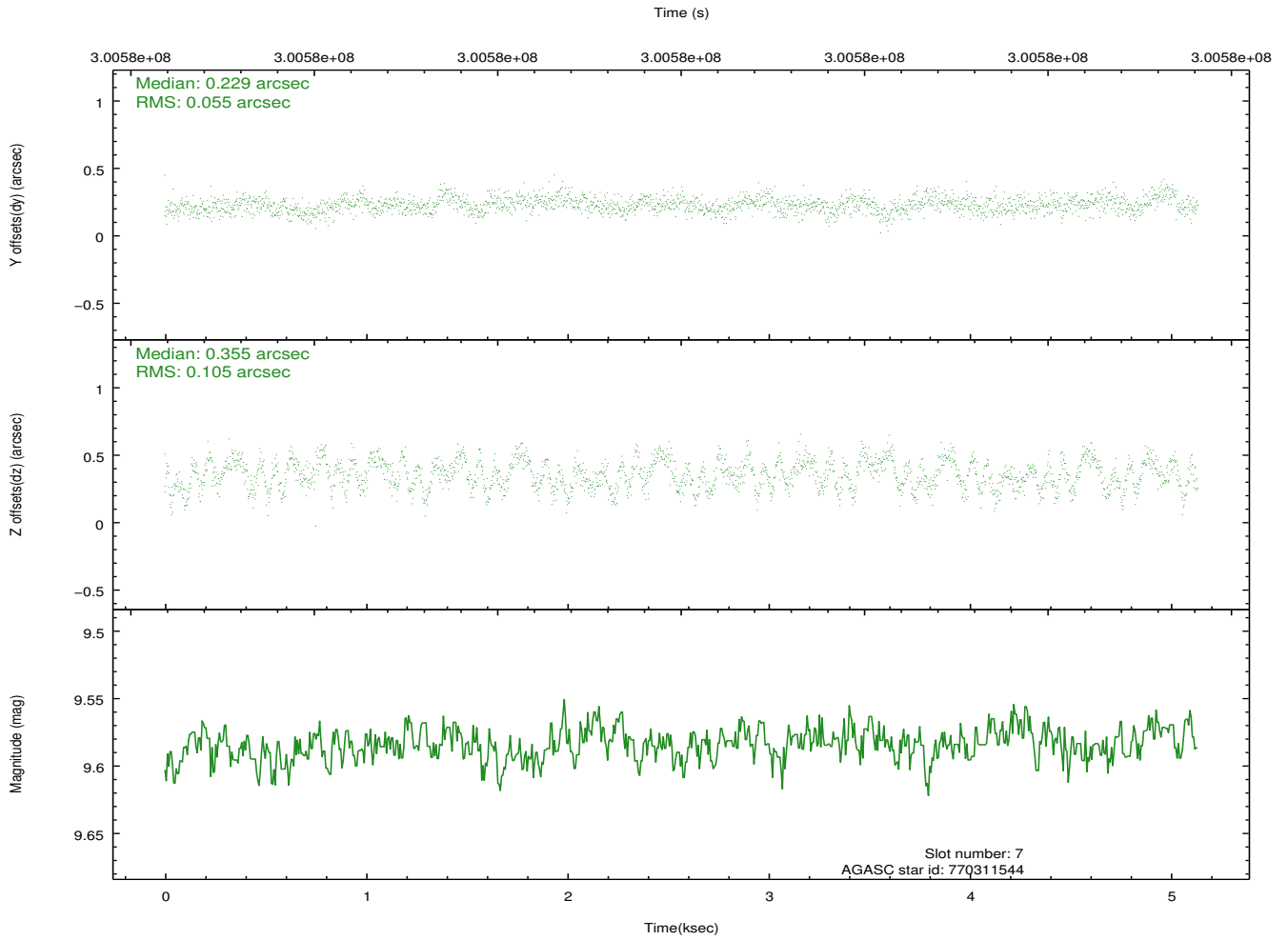
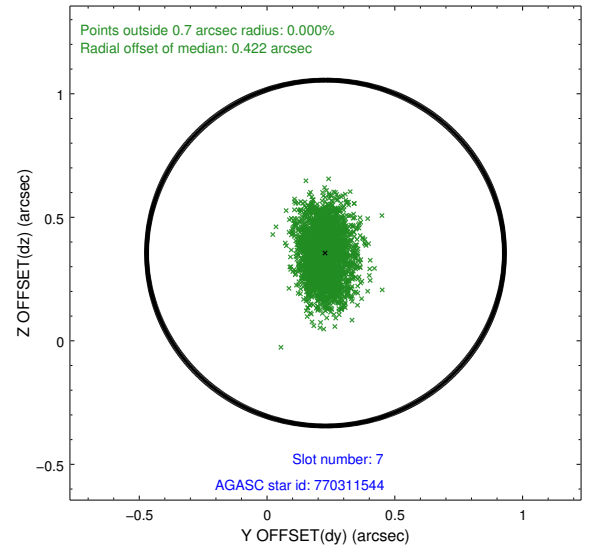
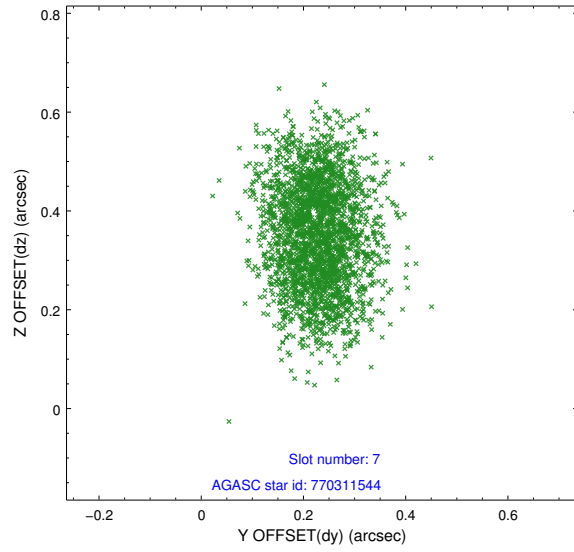
2.4.3 Slot 5



2.4.4 Slot 6

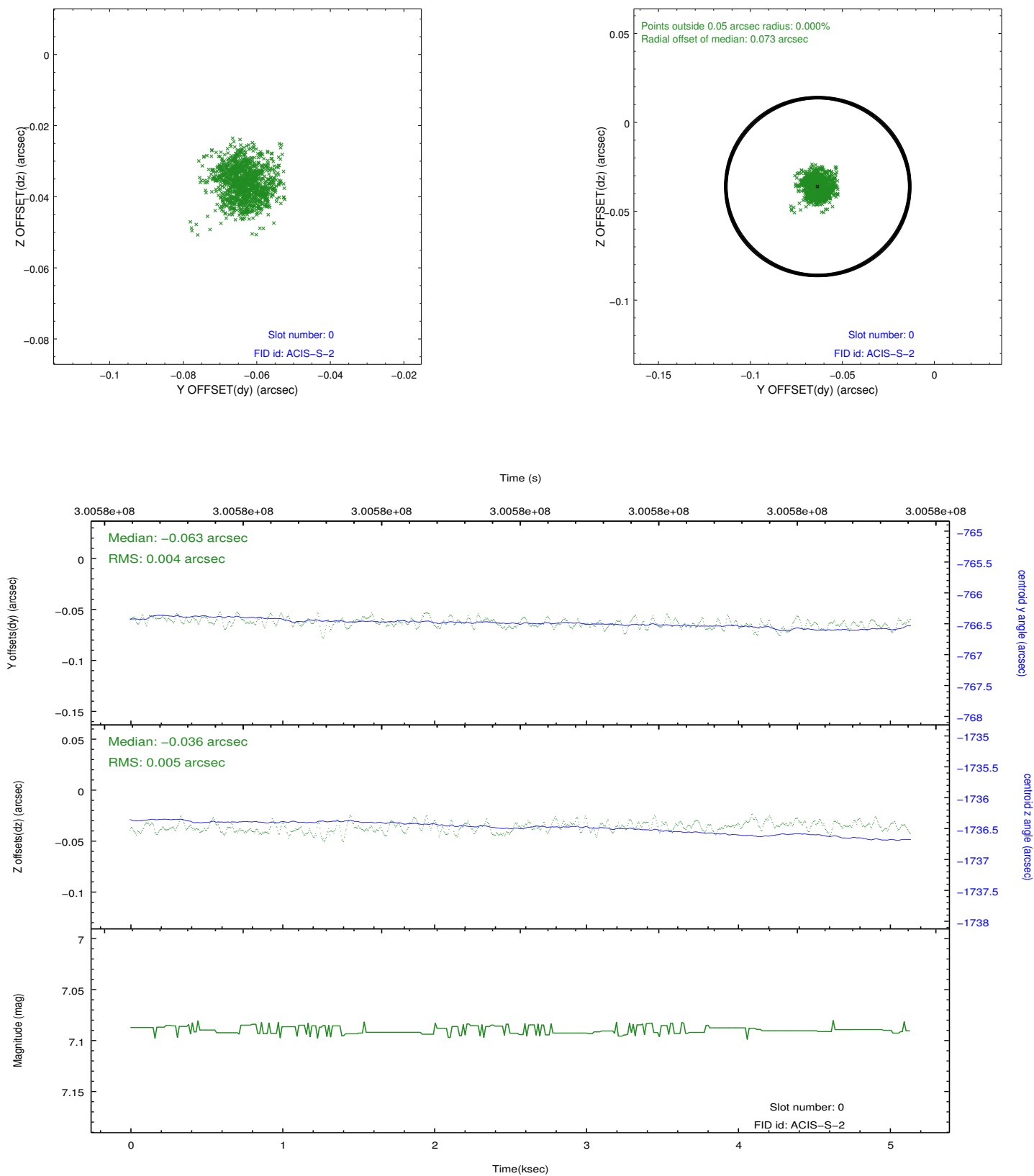


2.4.5 Slot 7

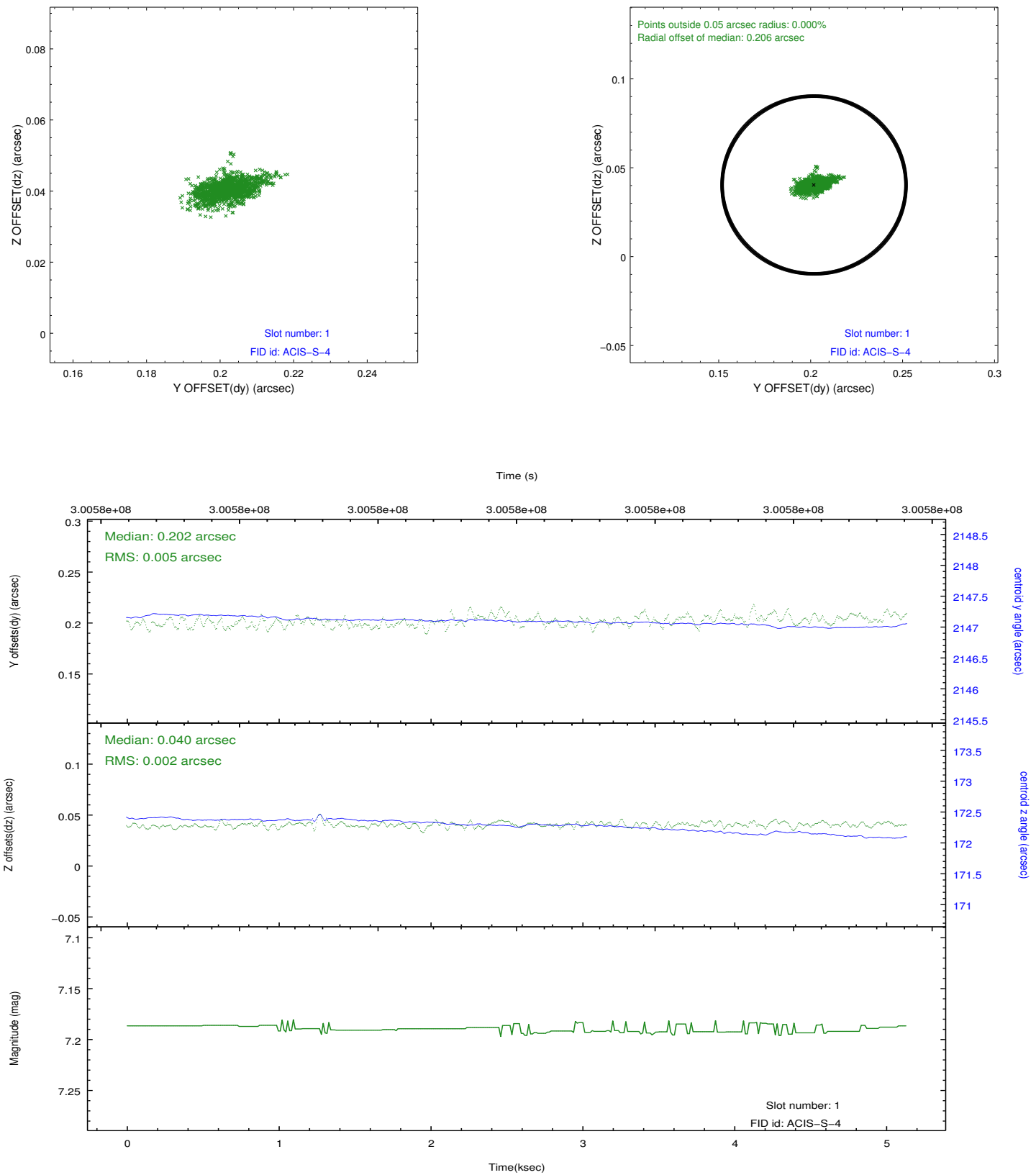


2.5 FID Slots

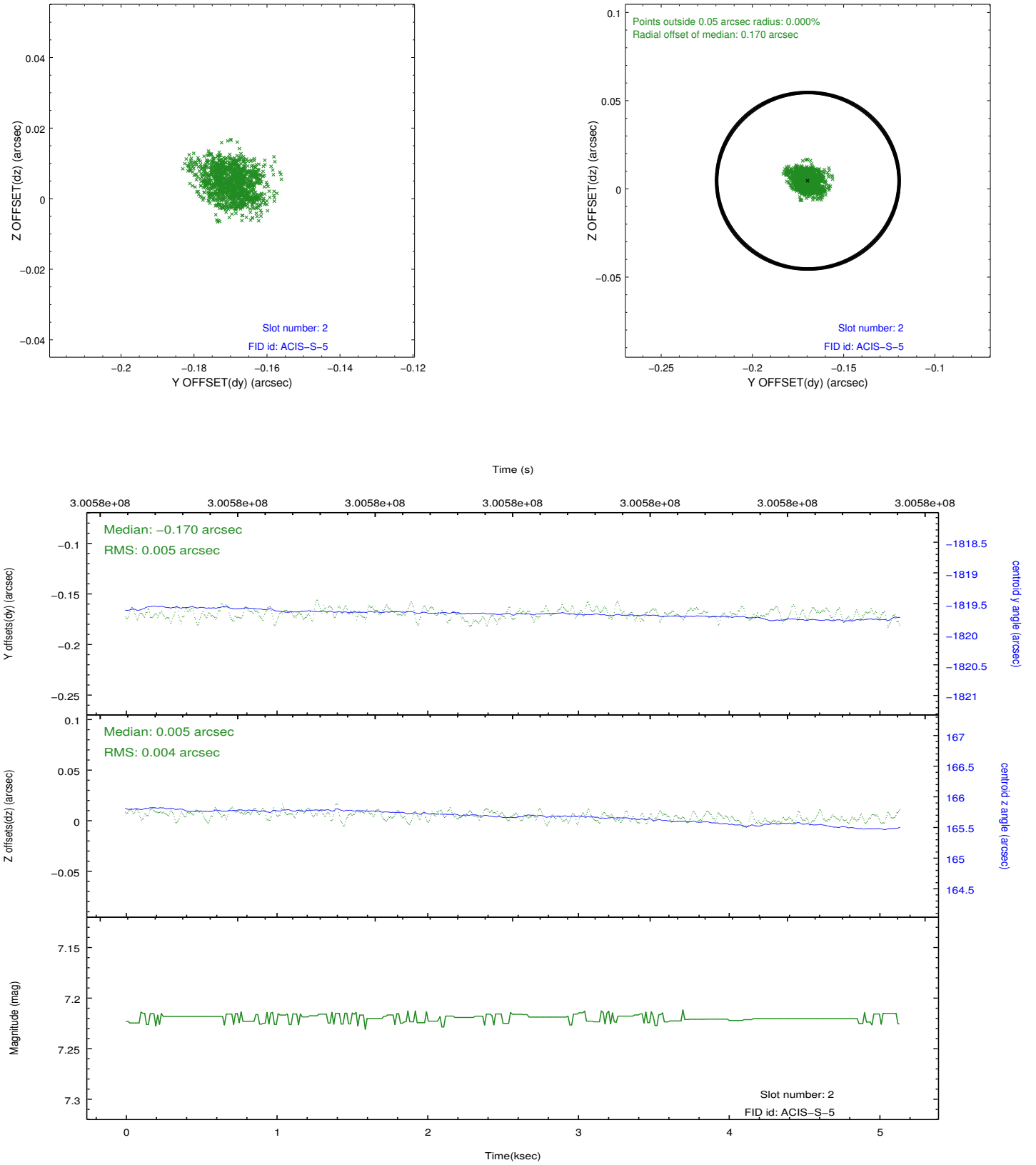
2.5.1 Slot 0



2.5.2 Slot 1



2.5.3 Slot 2



A Summary

A.1 Status

V&V Scientist	Jen Lauer
V&V Date (YYYY-MM-DD)	2012.04.30
V&V Edition	1
V&V Disposition and Status	OK
V&V Charge Time	4.95679998

A.2 Comments