

V&V Reference Report

L2 ASCDS Version : 8.4.3.1

Observation 7129 - L2 Version 2
Chandra X-Ray Center

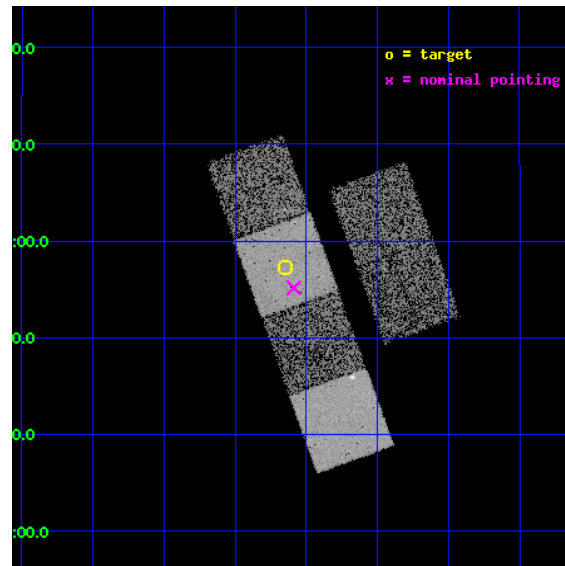
L2 Processing Date : Apr 5 2012

Contents

1	Front	2
2	OBI	3
2.1	OBI	3
2.1.1	Images	3
2.1.2	Bias	3
2.1.3	Parameters	4
2.1.4	Events	4
2.2	Compared Parameters	5
2.3	Aspect	6
2.4	Star Slots	9
2.4.1	Slot 3	9
2.4.2	Slot 4	10
2.4.3	Slot 5	11
2.4.4	Slot 6	12
2.4.5	Slot 7	13
2.5	FID Slots	14
2.5.1	Slot 0	14
2.5.2	Slot 1	15
2.5.3	Slot 2	16
A	Summary	17
A.1	Status	17
A.2	Comments	17

1 Front

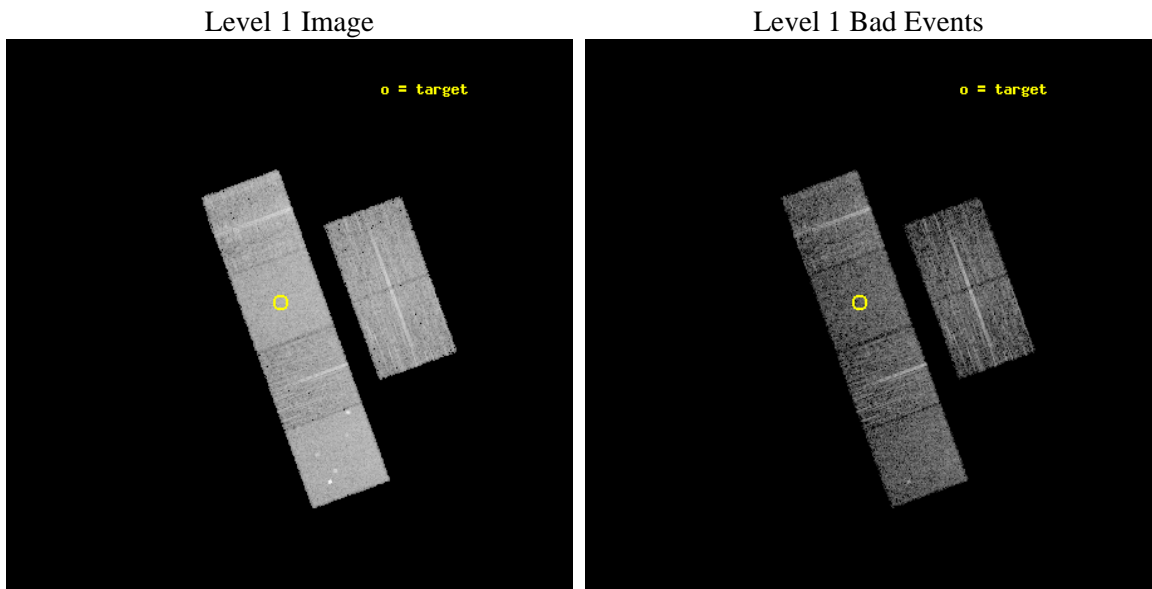
seq_num	600567	Sequence number
obs_id	7129	Observation id
title	A Complete Sample of ULX Host Galaxies	Proposal title
observer	Douglas Swartz	Principal investigator
object	NGC 4343	Source name
dtcycle	0	
cycle	P	events from which exps? Prim/Second/Both
ra_targ	185.91125	Observer's specified target RA [deg]
dec_targ	6.953889	Observer's specified target Dec [deg]
ra_nom	185.8967016403	Nominal RA [deg]
dec_nom	6.9192699803624	Nominal Dec [deg]
roll_nom	250.0010228129	Nominal Roll [deg]
revision	2	Processing version of data
ontime	4703.9999825358	Sum of GTIs [s]
livetime	4644.4351023482	Livetime [s]
ontime2	4703.9999825358	Sum of GTIs [s]
ontime3	4703.9999825358	Sum of GTIs [s]
ontime5	4703.9999825358	Sum of GTIs [s]
ontime6	4703.9999825358	Sum of GTIs [s]
ontime7	4703.9999825358	Sum of GTIs [s]
ontime8	4703.9999825358	Sum of GTIs [s]
l2events	68481	Number of level 2 events



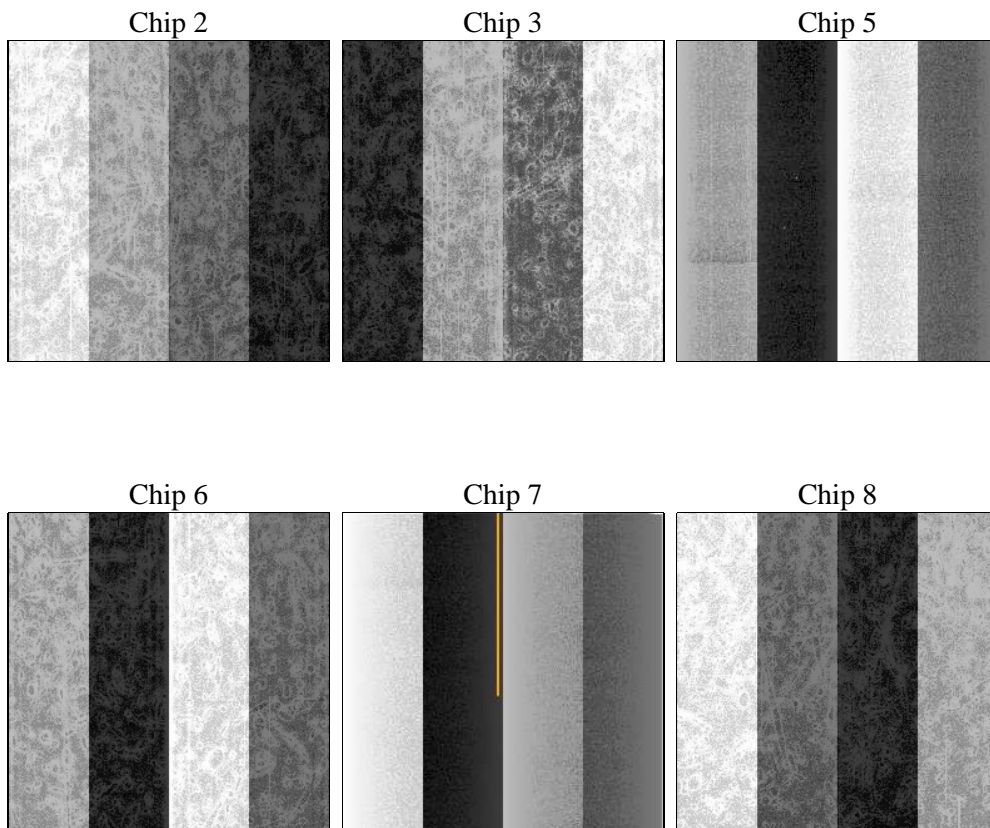
2 OBI

2.1 OBI

2.1.1 Images



2.1.2 Bias



2.1.3 Parameters

obi_num	0	Obi number	sched_exp_time	4580.000000	[s] Scheduled observation exposure time
ascdsver	8.4.3.1	Processing system revision	ontime	4703.9999825358	Sum of GTIs [s]
caldsver	4.4.9	 	ontime2	4703.9999825358	Sum of GTIs [s]
date	2012-04-05T11:03:48	Date and time of file creation	ontime3	4703.9999825358	Sum of GTIs [s]
revision	2	Processing version of data	ontime5	4703.9999825358	Sum of GTIs [s]
			ontime6	4703.9999825358	Sum of GTIs [s]
			ontime7	4703.9999825358	Sum of GTIs [s]
			ontime8	4703.9999825358	Sum of GTIs [s]
			l1events	312630	Number of level 1 events

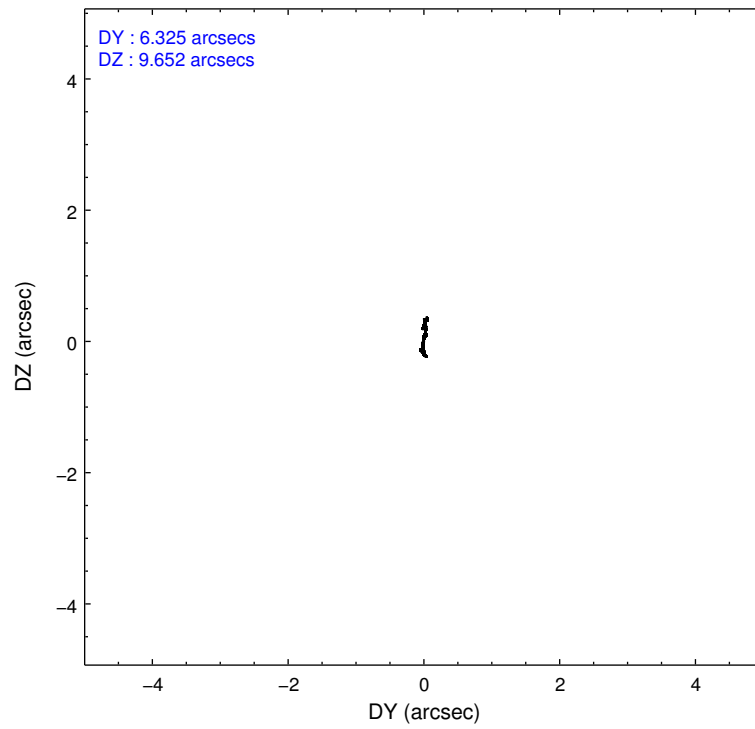
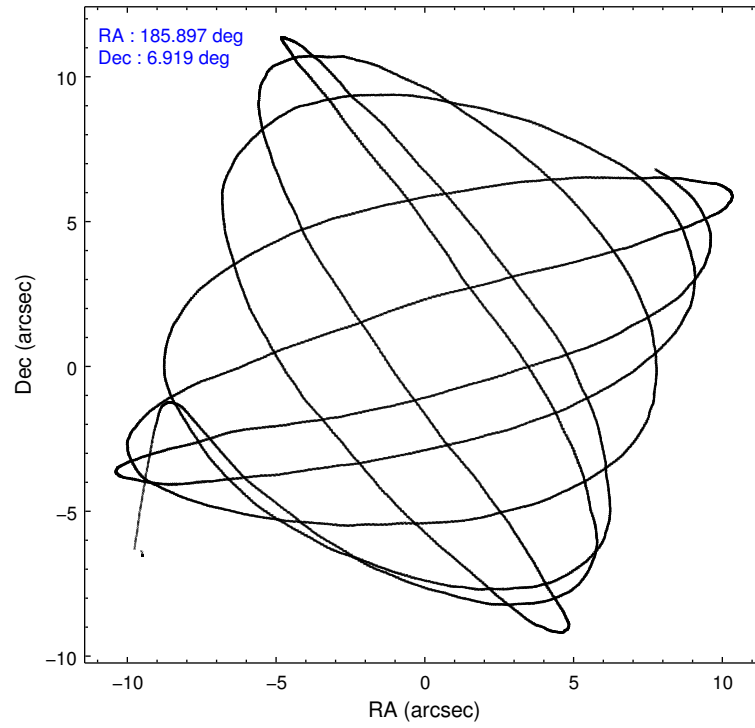
2.1.4 Events

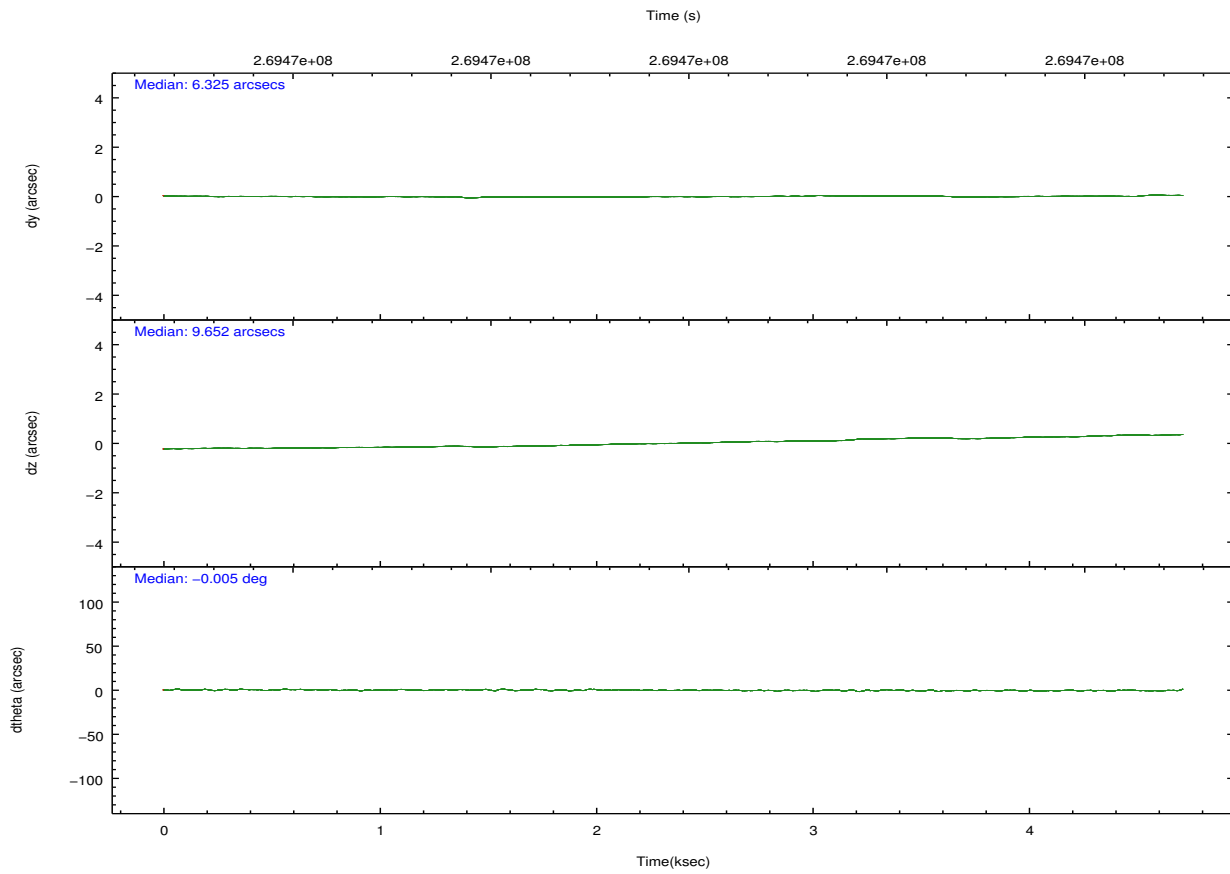
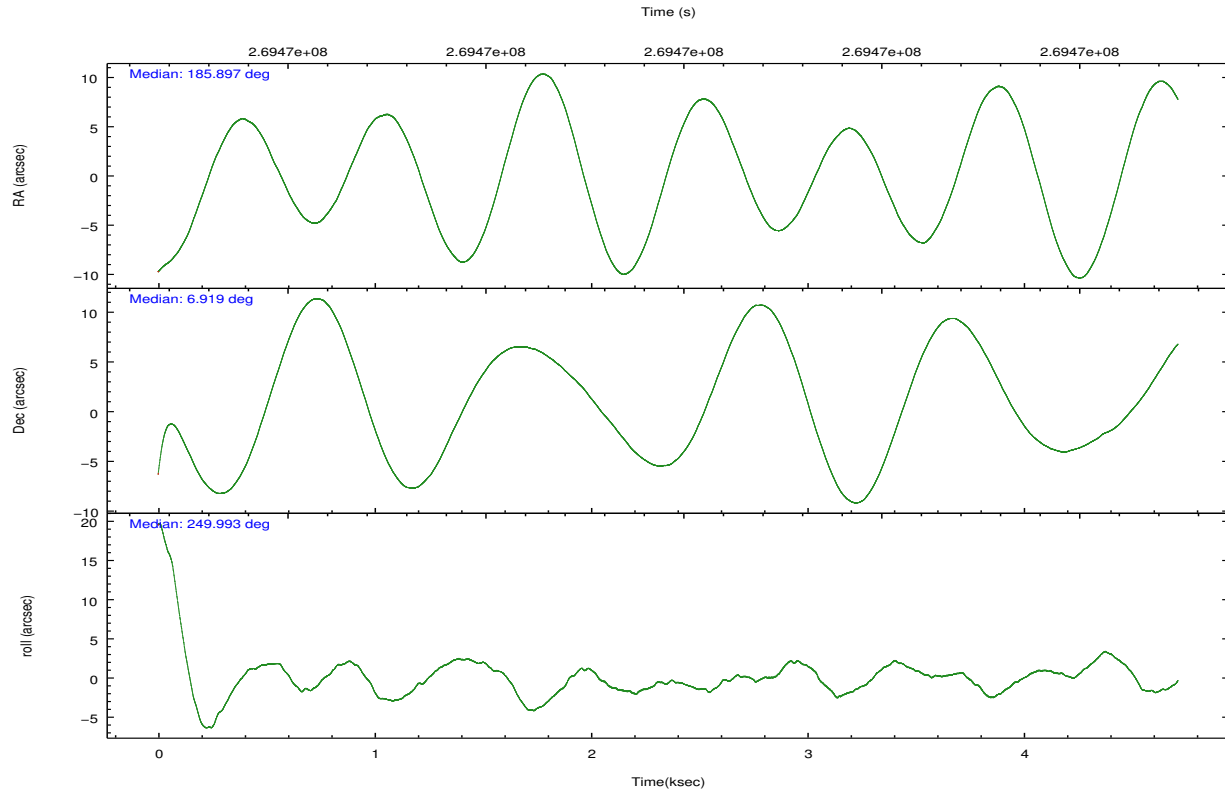
	ccd 2	ccd 3	ccd 5	ccd 6	ccd 7	ccd 8		ccd 2	ccd 3	ccd 5	ccd 6	ccd 7	ccd 8
level 1 events	45151	41612	65859	44877	58863	56268	grade 0 events	2111	2258	3020	1965	2340	4182
rejected events	40410	36787	36092	39873	34980	43963		4%	5%	4%	4%	3%	7%
rejected %	89%	88%	54%	88%	59%	78%	grade 1 events	33	31	230	16	52	37
								0%	0%	0%	0%	0%	0%
							grade 2 events	1034	921	9619	1134	5023	2628
								2%	2%	14%	2%	8%	4%
							grade 3 events	494	473	1077	484	2010	1388
								1%	1%	1%	1%	3%	2%
							grade 4 events	434	453	1061	476	2026	1328
								0%	1%	1%	1%	3%	2%
							grade 5 events	1578	1977	4524	1975	5529	2619
								3%	4%	6%	4%	9%	4%
							grade 6 events	816	886	15991	1107	13278	3125
								1%	2%	24%	2%	22%	5%
							grade 7 events	38651	34613	30337	37720	28605	40961
								85%	83%	46%	84%	48%	72%

2.2 Compared Parameters

Parameter	Planned	Actual	Parameter	Planned	Actual
Instrument	ACIS	ACIS	Obspar format version number	7	7
Detector	ACIS-235678	ACIS-235678	Obspar file type	PREDICTED	ACTUAL
Grating	NONE	NONE	Obspar update status	NONE	UPDATED
Data mode	FAINT	FAINT	Number of optional ACIS chips dropped	0	0
Observation mode	POINTING	POINTING	On-chip summing requested	N	N
[deg] Pointing RA	185.891577	185.8967016403047	Subarray requested	NONE	NONE
[deg] Pointing Dec	6.946147	6.919269980362444	Alternating exposures requested	N	N
[deg] Pointing Roll	249.845007	250.0010228129022	[s] Primary exposure time	0.000000	3.2
[mm] SIM focus pos	-0.684267	-0.6828225247311905			
[mm] SIM defocus	0	0.001444936568705701			
[mm] SIM translation stage pos	-190.132523	-190.1400660498719			
[mm] SIM translation stage offset	0	0.00754346686406393			
[s] Observation start time (MET)	269469697.184000	269468574.7832			
Observation start date	2006-07-16T20:40:32	2006-07-16T20:22:54			
[s] Observation end time (MET)	269474277.184000	269475016.396			
Observation end date	2006-07-16T21:56:52	2006-07-16T22:10:16			
Read mode	TIMED	TIMED			

2.3 Aspect



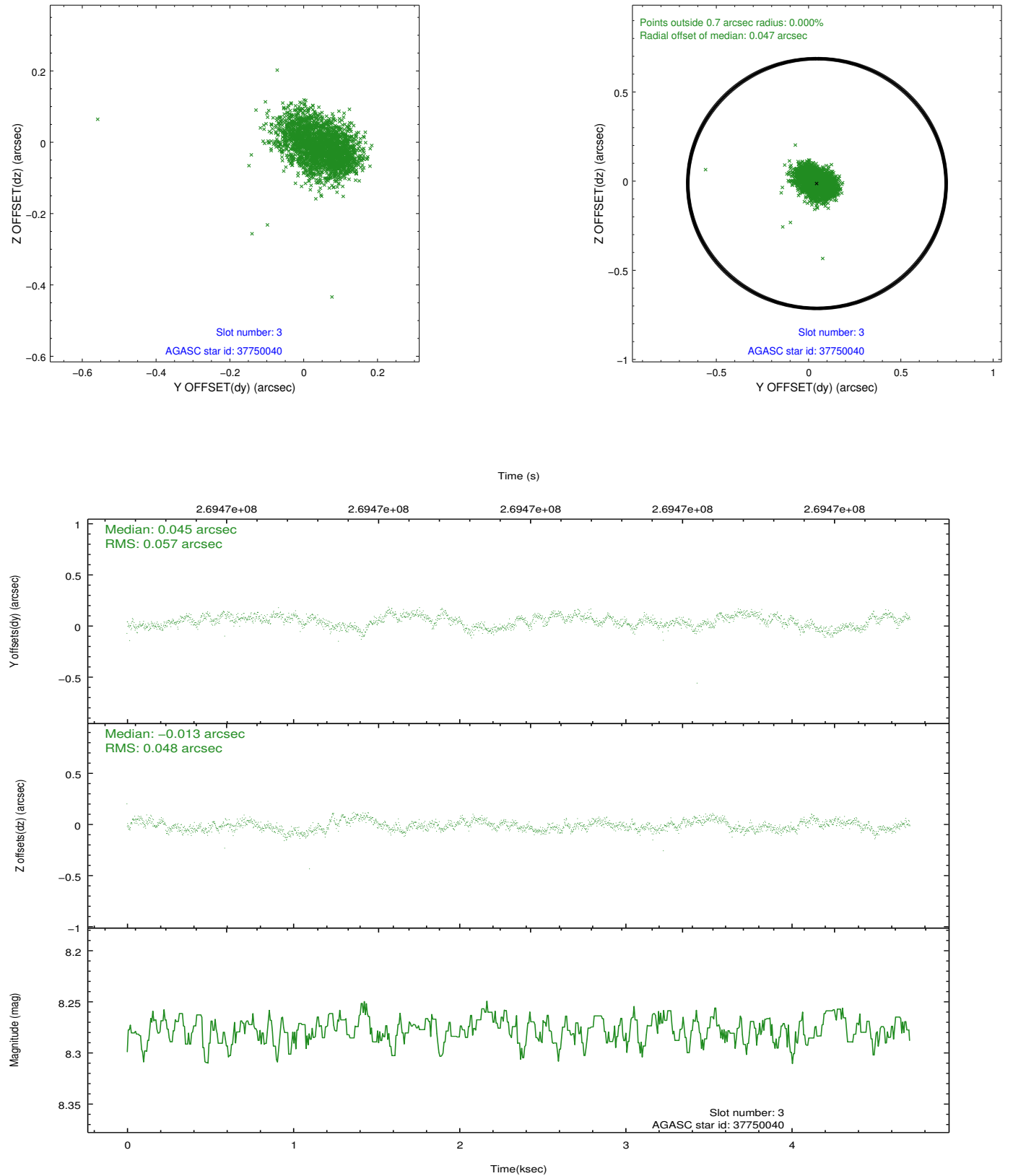


Slot Statistics

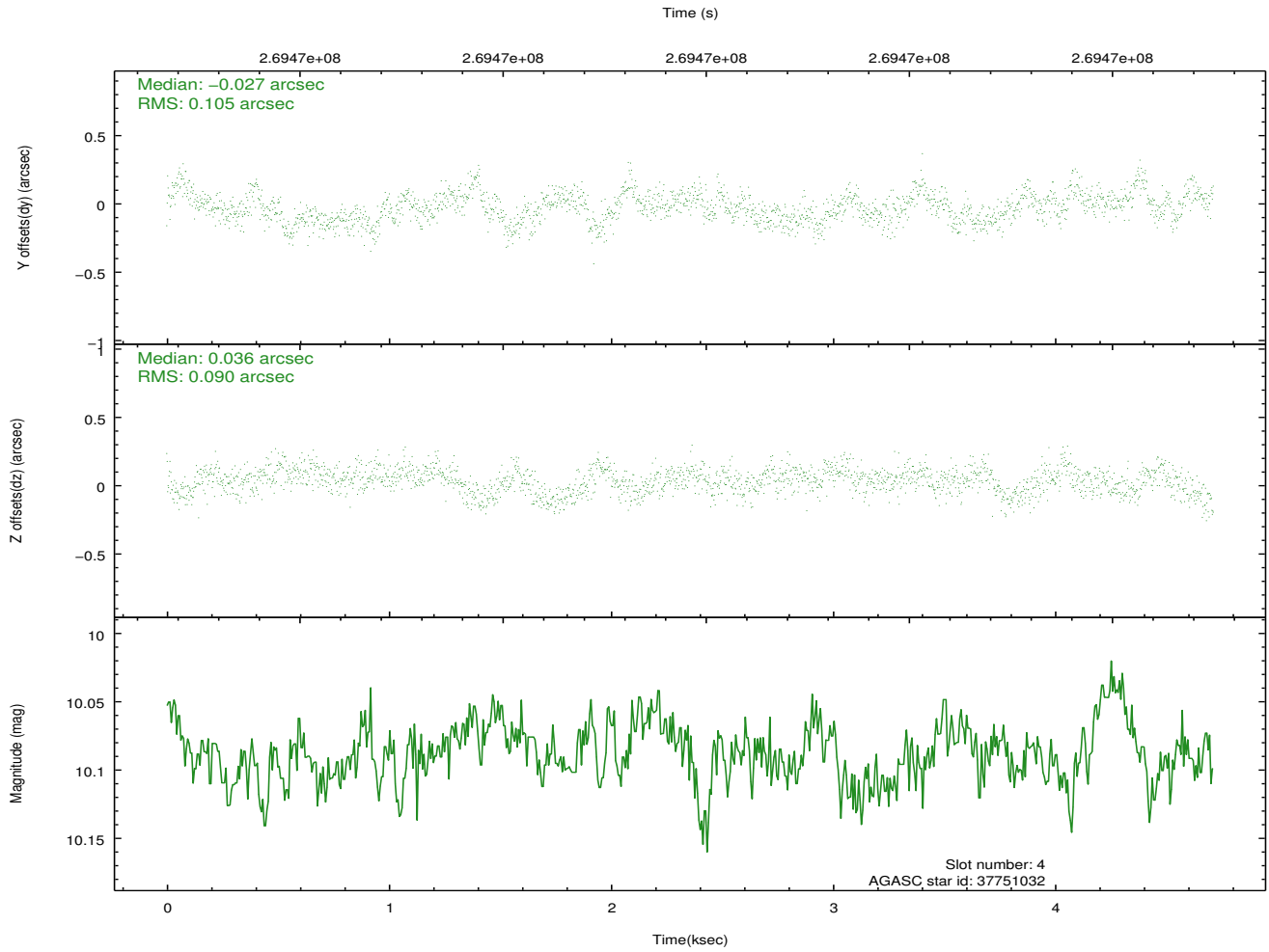
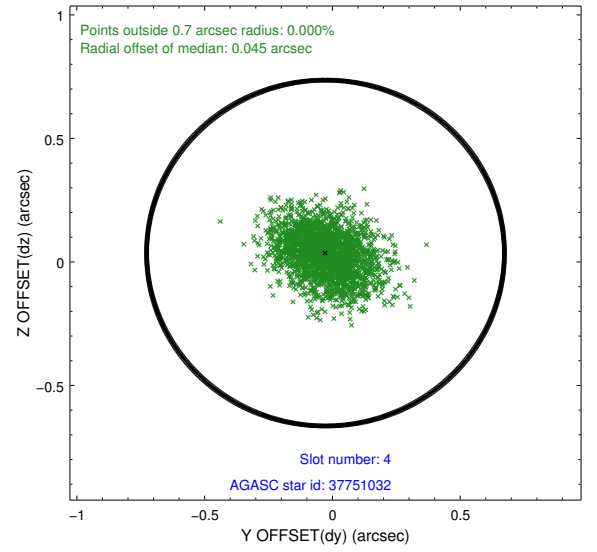
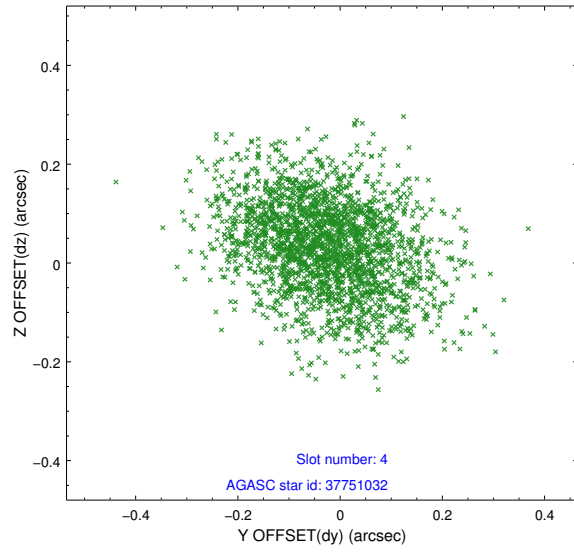
slot	status	id	mag	n_pts	med_dy	med_dz	dr1	dr2	ra	dec	mean_y	mean_z
0	FID	ACIS-S-1	7.19	1150	0.033	-0.029	0.009	0.015	0.000000	0.000000	937.00	-1726.58
1	FID	ACIS-S-5	7.24	1150	-0.091	0.018	0.007	0.012	0.000000	0.000000	-1811.38	169.70
2	FID	ACIS-S-6	7.36	1150	0.037	0.023	0.012	0.019	0.000000	0.000000	401.17	815.12
3	GUIDE	37750040	8.28	2300	0.045	-0.013	0.078	0.121	186.217544	6.363680	1565.91	1817.48
4	GUIDE	37751032	10.09	2299	-0.027	0.036	0.148	0.241	186.355124	7.277238	-1689.77	1143.63
5	GUIDE	37751880	9.63	2298	-0.022	0.143	0.109	0.174	185.771871	6.844190	491.12	-274.54
6	GUIDE	37756464	9.12	2300	0.168	-0.052	0.102	0.171	185.231345	6.571910	2077.31	-1752.91
7	GUIDE	114434008	8.76	2299	-0.163	-0.117	0.083	0.129	185.534773	7.569663	-1668.06	-1970.23

2.4 Star Slots

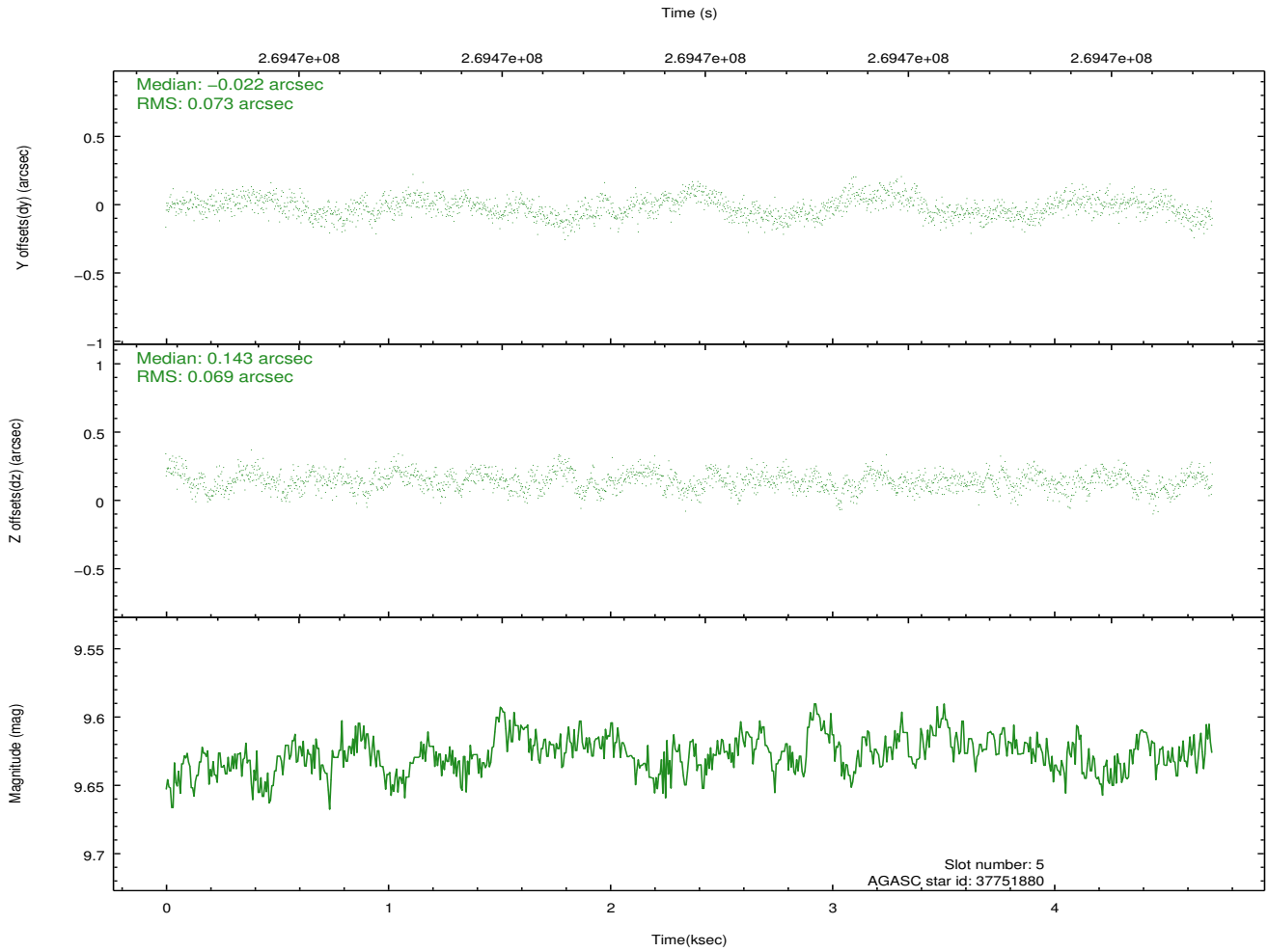
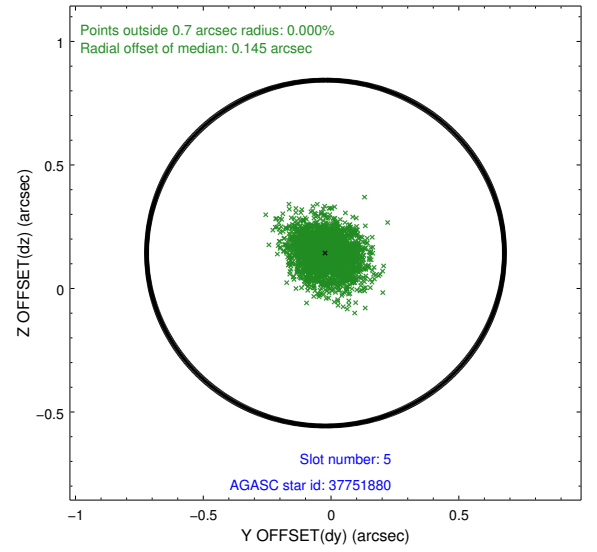
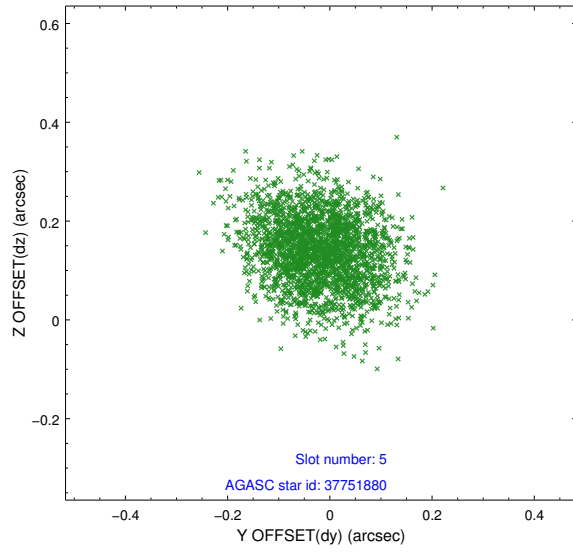
2.4.1 Slot 3



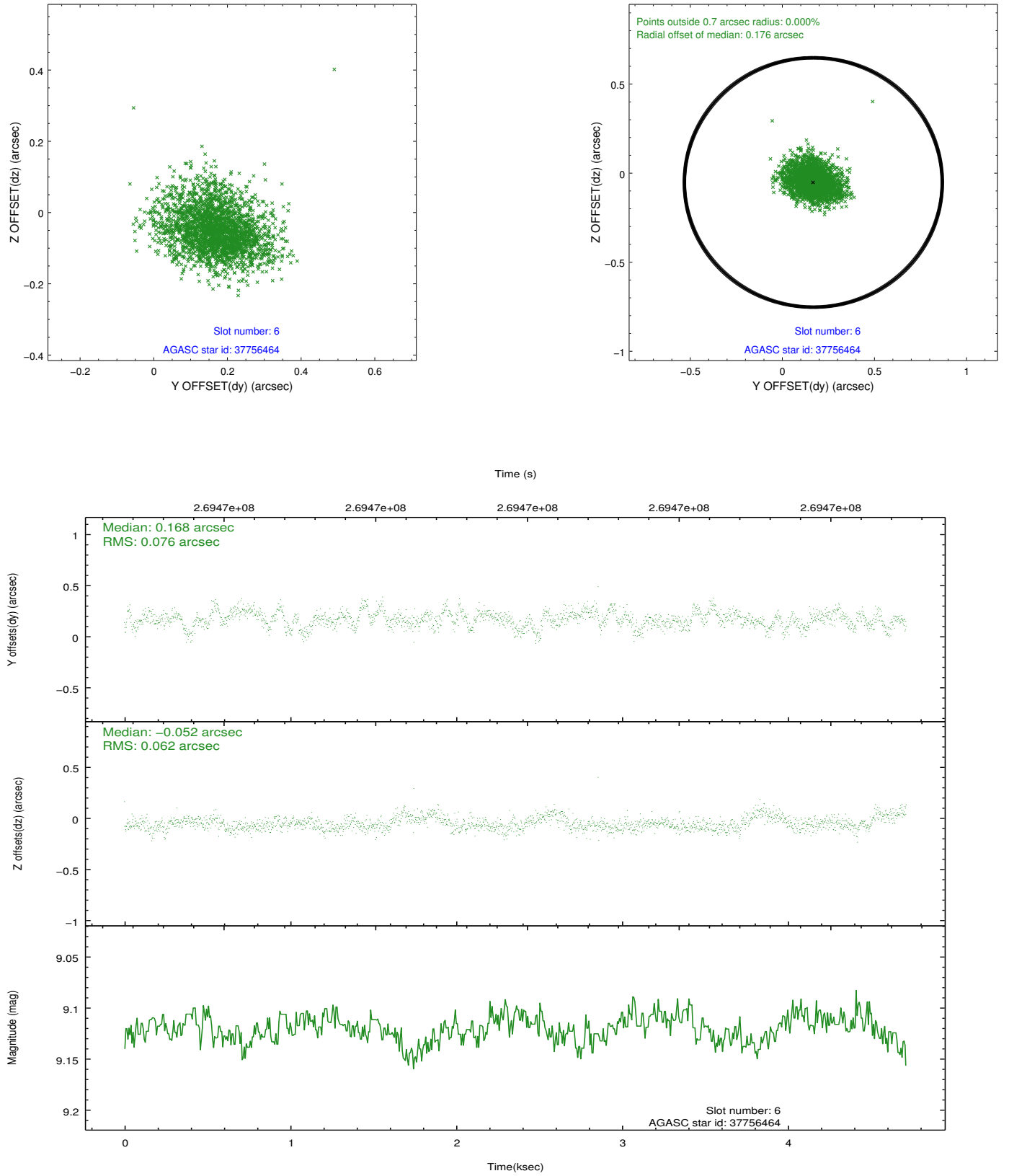
2.4.2 Slot 4



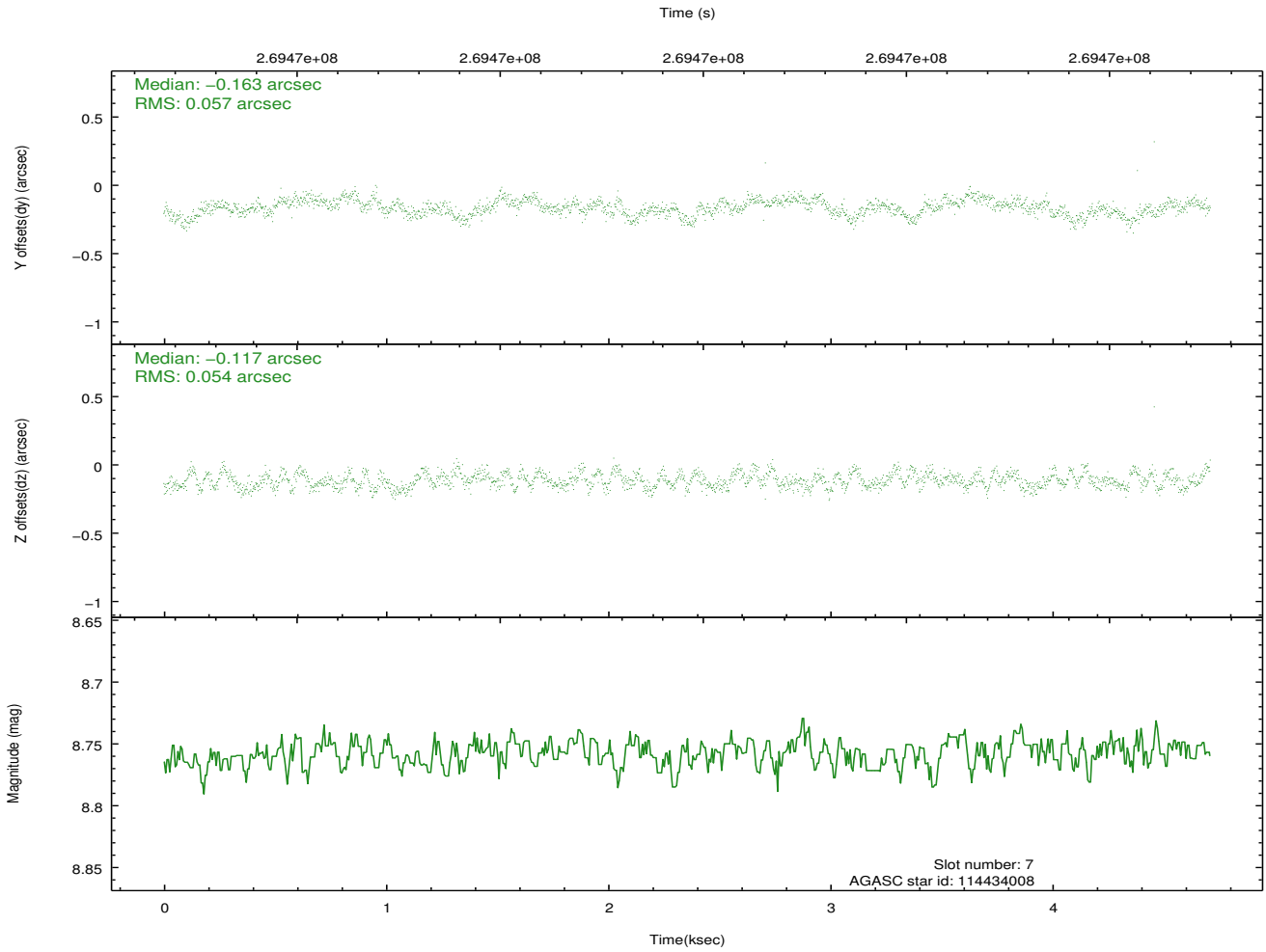
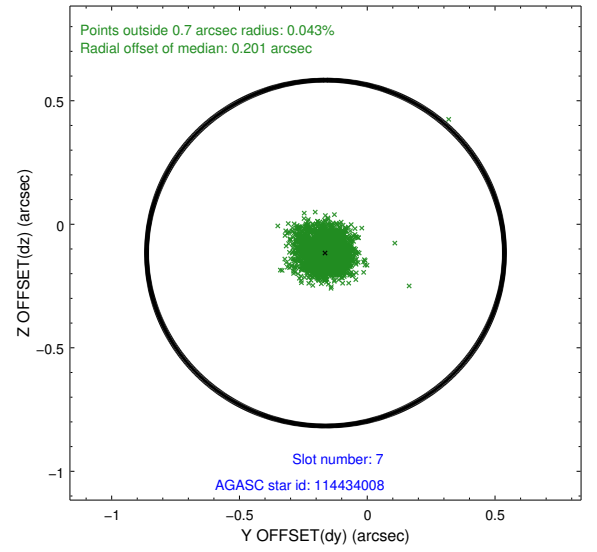
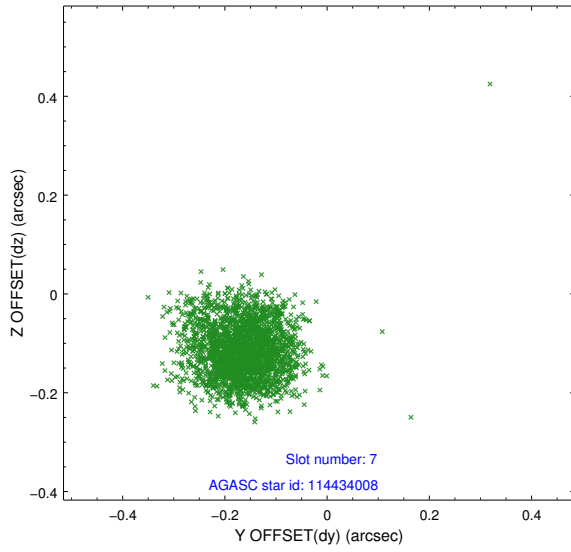
2.4.3 Slot 5



2.4.4 Slot 6

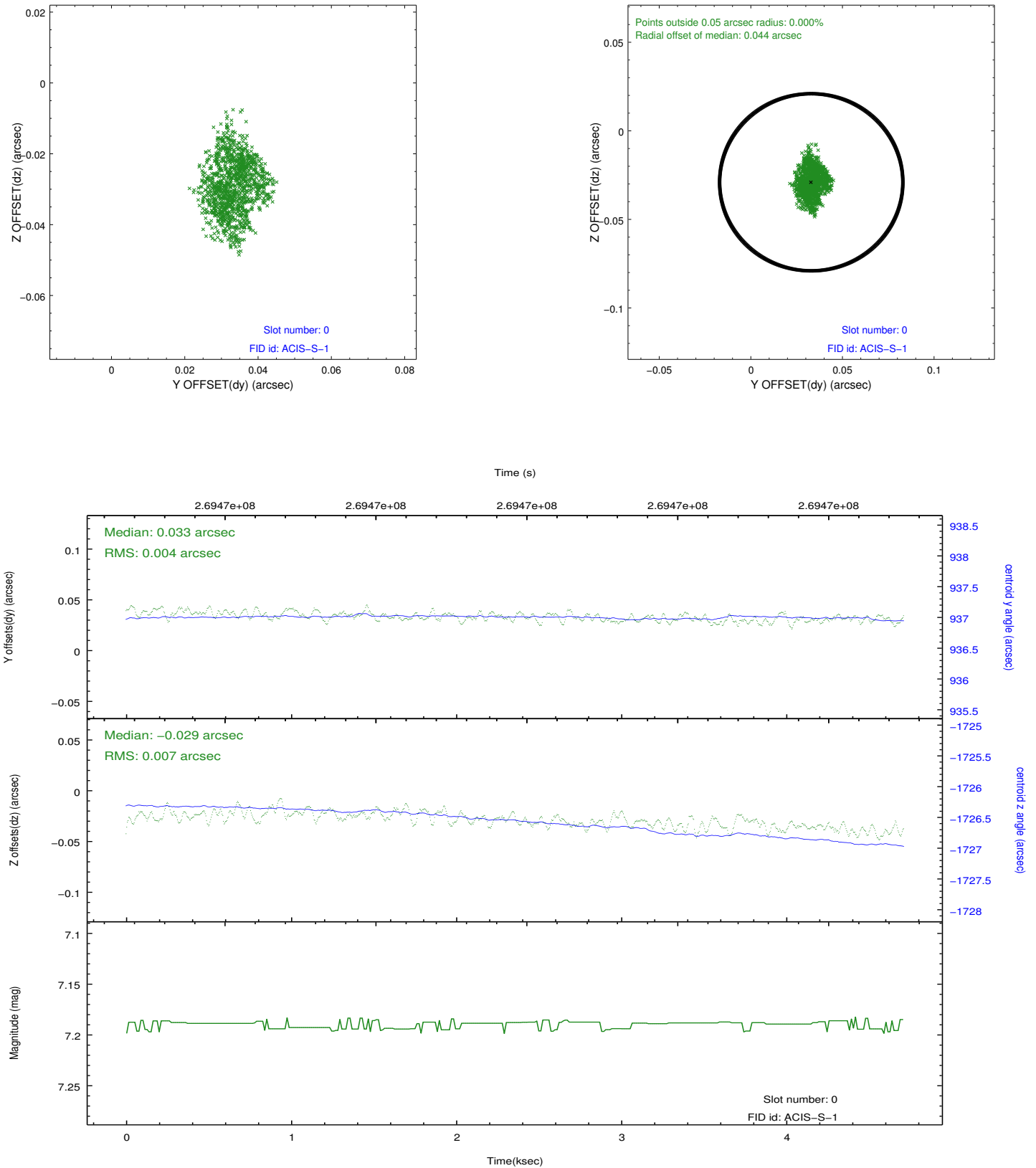


2.4.5 Slot 7

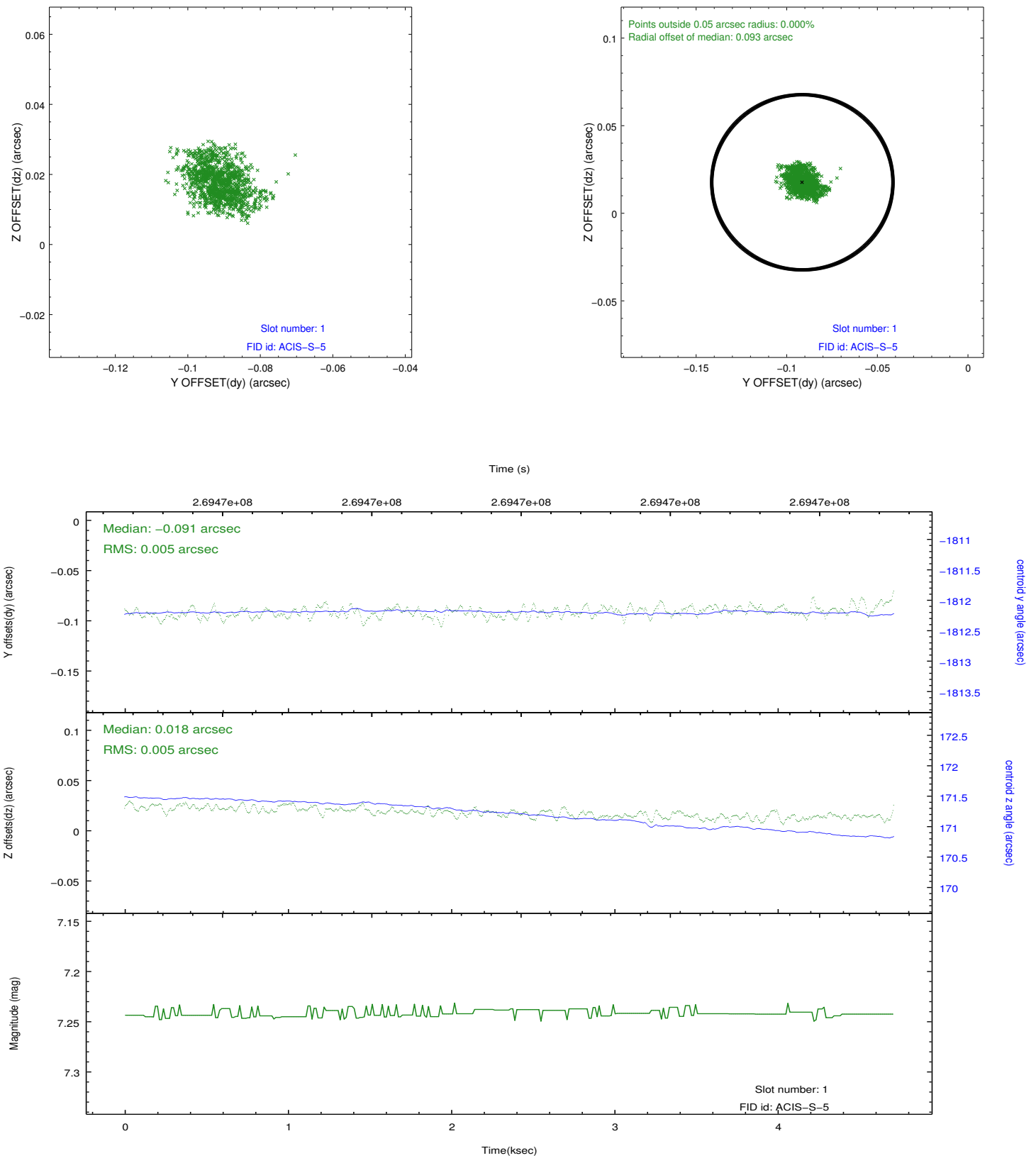


2.5 FID Slots

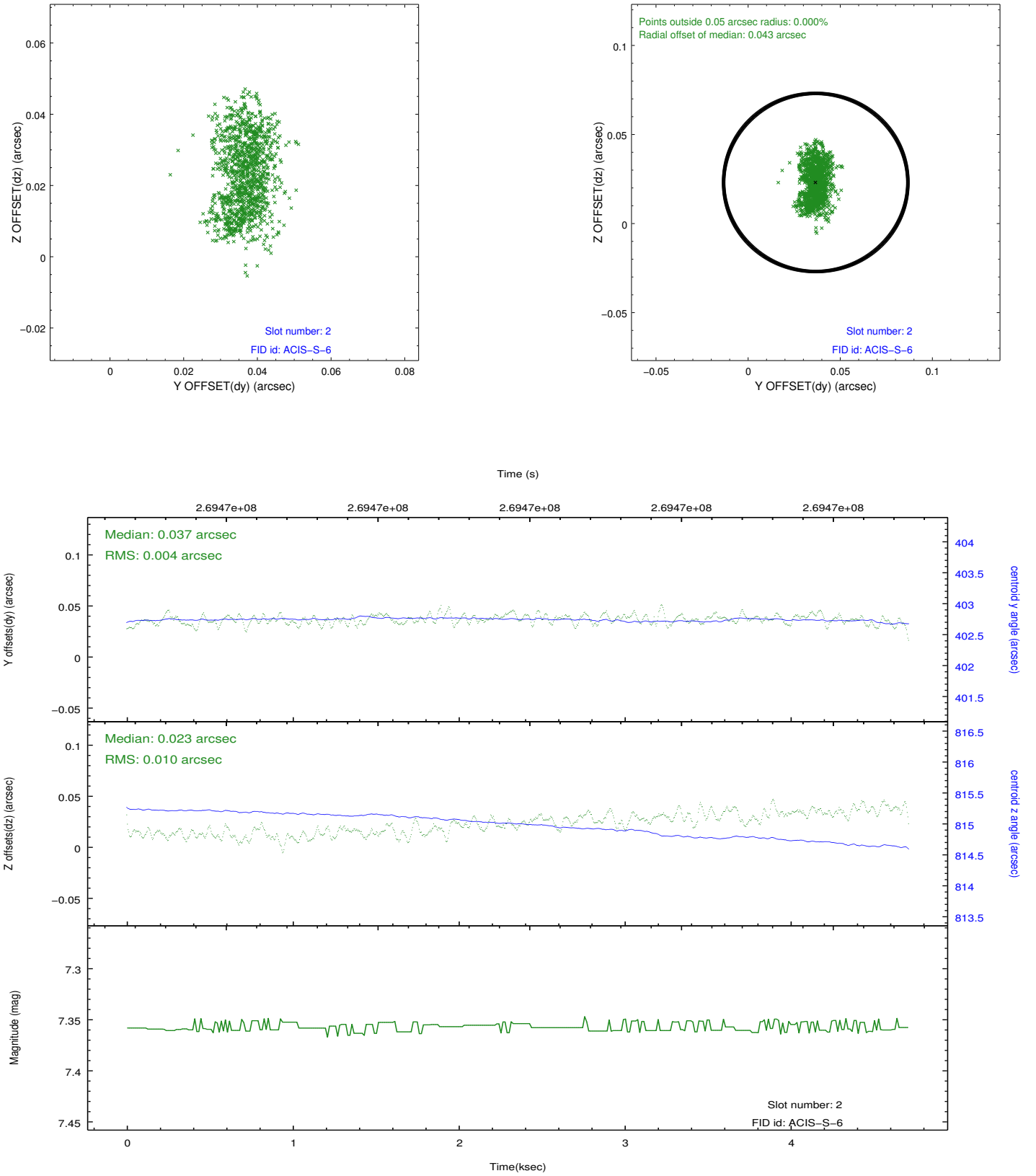
2.5.1 Slot 0



2.5.2 Slot 1



2.5.3 Slot 2



A Summary

A.1 Status

V&V Scientist	Jen Lauer
V&V Date (YYYY-MM-DD)	2012.04.05
V&V Edition	1
V&V Disposition and Status	OK
V&V Charge Time	4.70399998

A.2 Comments