

# V&V Reference Report

## L2 ASCDS Version : 8.5.1.1

Observation 6999 - L2 Version 3  
Chandra X-Ray Center

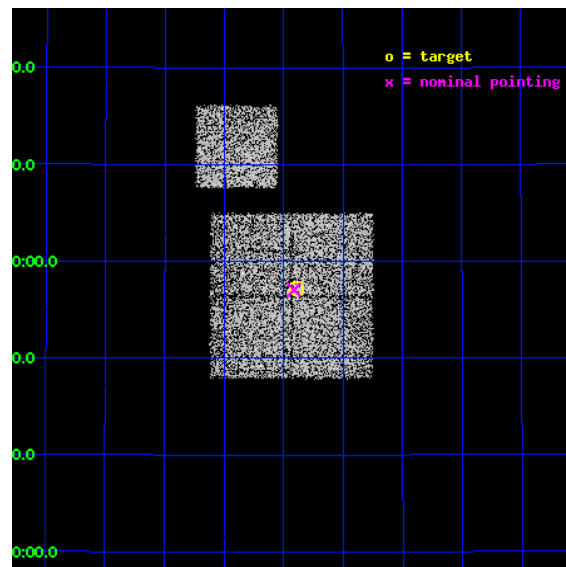
L2 Processing Date : Dec 31 2012

## Contents

<b>1</b>	<b>Front</b>	<b>2</b>
<b>2</b>	<b>OBI</b>	<b>3</b>
2.1	OBI . . . . .	3
2.1.1	Images . . . . .	3
2.1.2	Bias . . . . .	3
2.1.3	Parameters . . . . .	4
2.1.4	Events . . . . .	4
2.2	Compared Parameters . . . . .	5
2.3	Aspect . . . . .	6
2.4	Star Slots . . . . .	9
2.4.1	Slot 3 . . . . .	9
2.4.2	Slot 4 . . . . .	10
2.4.3	Slot 5 . . . . .	11
2.4.4	Slot 6 . . . . .	12
2.4.5	Slot 7 . . . . .	13
2.5	FID Slots . . . . .	14
2.5.1	Slot 0 . . . . .	14
2.5.2	Slot 1 . . . . .	15
2.5.3	Slot 2 . . . . .	16
<b>A</b>	<b>Summary</b>	<b>17</b>
A.1	Status . . . . .	17
A.2	Comments . . . . .	17

# 1 Front

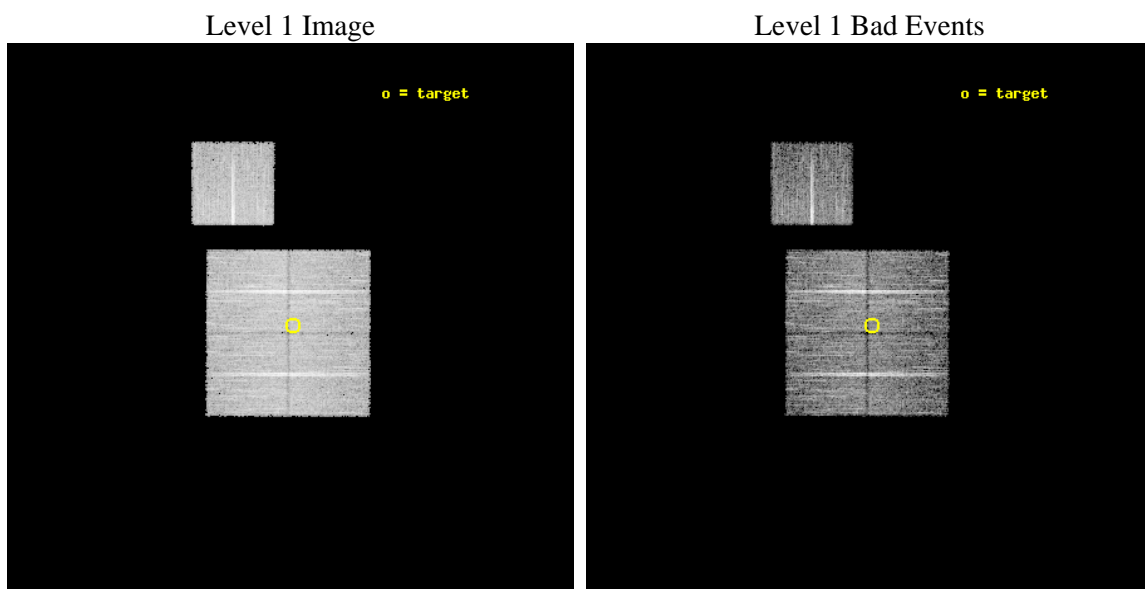
seq_num	900415	Sequence number
obs_id	6999	Observation id
title	Chandra Large Scale Survey of the NOAO Bootes Deep Field (A)	Propo
observer	Dr. Stephen Murray	Principal investigator
object	Bootes2 21	Source name
dtcycle	0	&#160
cycle	P	events from which exps? Prim/Second/Both
ra_targ	217.84825	Observer's specified target RA [deg]
dec_targ	33.952944	Observer's specified target Dec [deg]
ra_nom	217.8533925948	Nominal RA [deg]
dec_nom	33.951106734221	Nominal Dec [deg]
roll_nom	0.20580642255054	Nominal Roll [deg]
revision	3	Processing version of data
ontime	9705.6152882576	Sum of GTIs [s]
livetime	9578.8042793465	Livetime [s]
ontime0	9708.6331285238	Sum of GTIs [s]
ontime1	9699.2512279749	Sum of GTIs [s]
ontime2	9708.7152085304	Sum of GTIs [s]
ontime3	9705.6152882576	Sum of GTIs [s]
ontime6	9705.4511182904	Sum of GTIs [s]
l2events	23477	Number of level 2 events



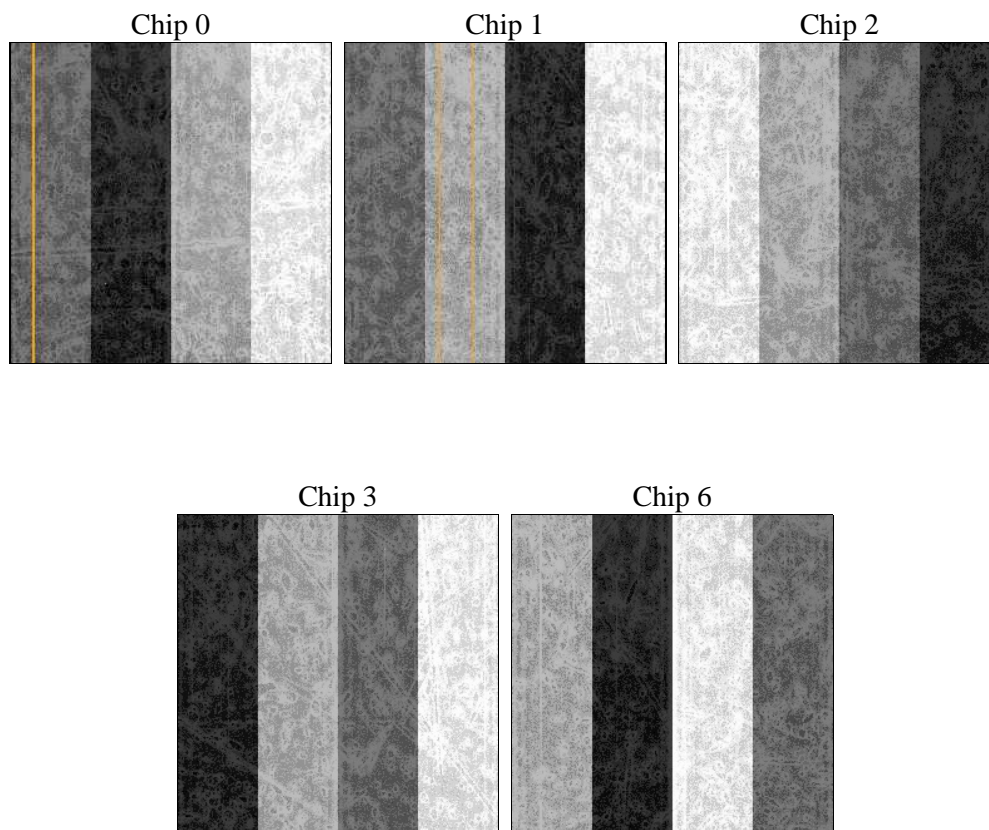
## 2 OBI

### 2.1 OBI

#### 2.1.1 Images



#### 2.1.2 Bias



### 2.1.3 Parameters

obi_num	0	Obi number	sched_exp_time	10000.000000	[s] Scheduled observation exposure time
ascdsver	8.5.1.1	Processing system revision	ontime	9705.6152882576	Sum of GTIs [s]
caldbver	4.5.5	&#160	ontime0	9708.6331285238	Sum of GTIs [s]
date	2012-12-31T09:40:08	Date and time of file creation	ontime1	9699.2512279749	Sum of GTIs [s]
revision	3	Processing version of data	ontime2	9708.7152085304	Sum of GTIs [s]
			ontime3	9705.6152882576	Sum of GTIs [s]
			ontime6	9705.4511182904	Sum of GTIs [s]
			l1events	297418	Number of level 1 events

### 2.1.4 Events

	ccd 0	ccd 1	ccd 2	ccd 3	ccd 6
level 1 events	58808	54059	67906	57994	58651
rejected events	52967	48093	62308	52546	52672
rejected %	90%	88%	91%	90%	89%

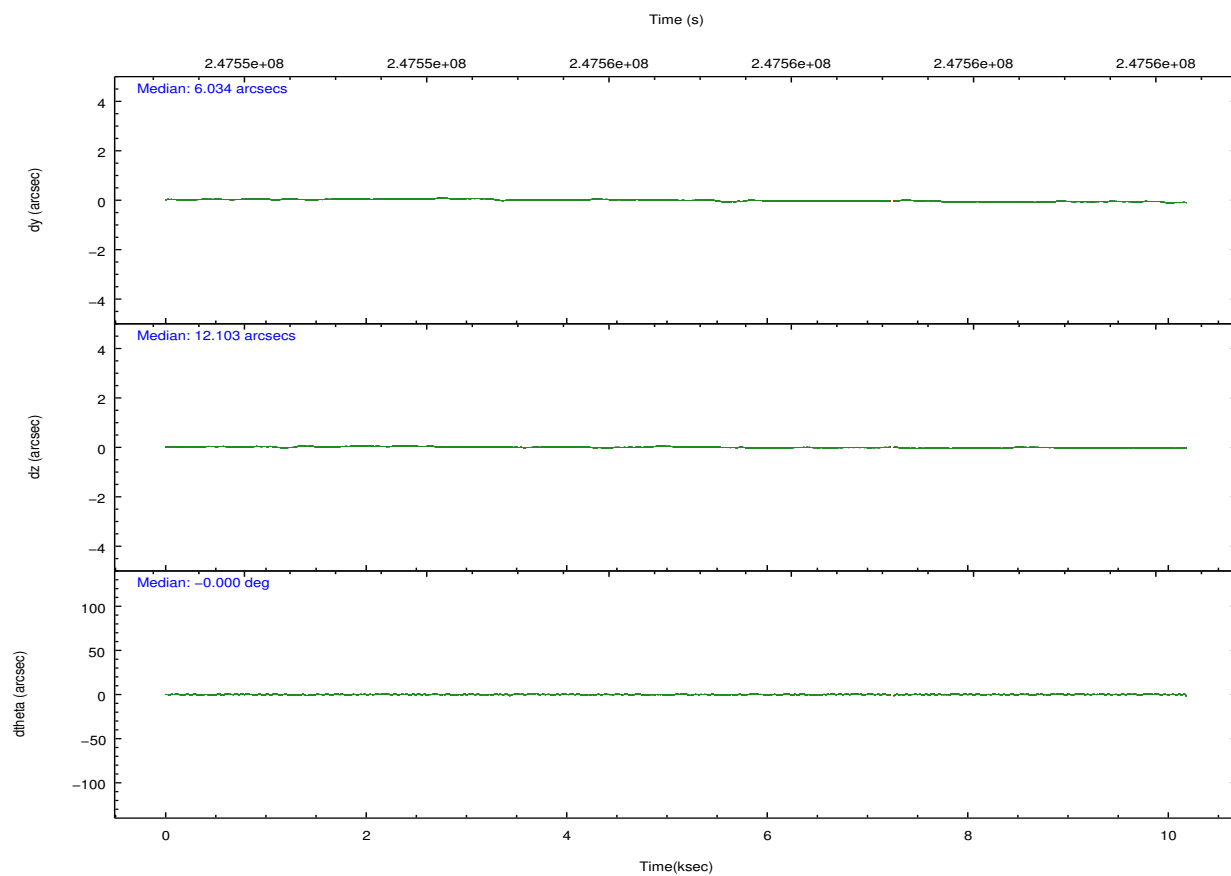
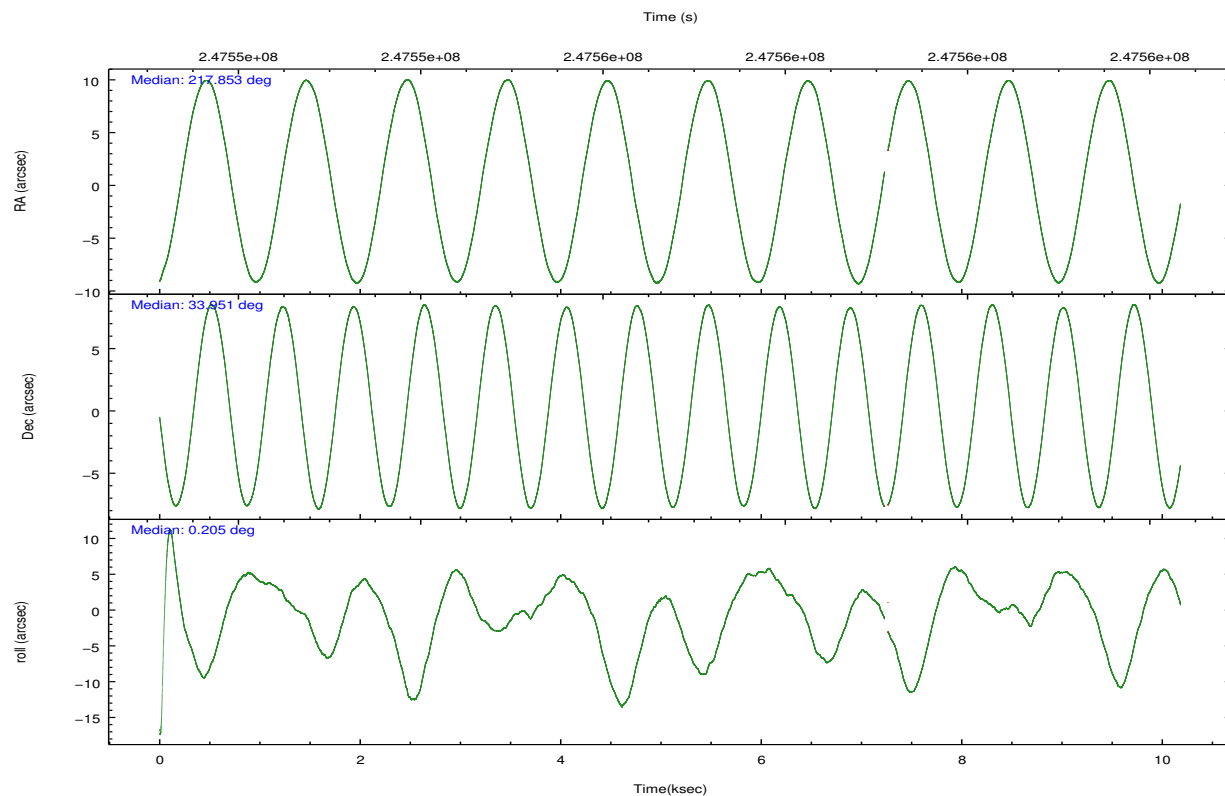
	ccd 0	ccd 1	ccd 2	ccd 3	ccd 6
grade 0 events	2109	1984	2098	1904	2182
	3%	3%	3%	3%	3%
grade 1 events	20	26	39	32	25
	0%	0%	0%	0%	0%
grade 2 events	1394	1356	1349	1203	1288
	2%	2%	1%	2%	2%
grade 3 events	667	742	603	652	703
	1%	1%	0%	1%	1%
grade 4 events	693	720	627	647	666
	1%	1%	0%	1%	1%
grade 5 events	1732	2079	1647	2062	2035
	2%	3%	2%	3%	3%
grade 6 events	1019	1209	958	1083	1186
	1%	2%	1%	1%	2%
grade 7 events	51174	45943	60585	50411	50566
	87%	84%	89%	86%	86%



## 2.2 Compared Parameters

Parameter	Planned	Actual	Parameter	Planned	Actual
Instrument	ACIS	ACIS	Obspar format version number	7	7
Detector	ACIS-01236	ACIS-01236	Obspar file type	PREDICTED	ACTUAL
Grating	NONE	NONE	Obspar update status	NONE	UPDATED
Data mode	VFAINT	VFAINT	Number of optional ACIS chips dropped	0	0
Observation mode	POINTING	POINTING	On-chip summing requested	N	N
[deg] Pointing RA	217.824949	217.8533925947976	Subarray requested	NONE	NONE
[deg] Pointing Dec	33.937270	33.95110673422127	Alternating exposures requested	N	N
[deg] Pointing Roll	0.013005	0.2058064225505427	[s] Primary exposure time	0.000000	3.1
[mm] SIM focus pos	-0.782348	-0.7809083437167272			
[mm] SIM defocus	0	0.001439871863259334			
[mm] SIM translation stage pos	-233.592463	-233.5874344608287			
[mm] SIM translation stage offset	0	-0.005018542100998502			
[s] Observation start time (MET)	247551830.184000	247551454.3765			
Observation start date	2005-11-05T04:22:46	2005-11-05T04:17:34			
[s] Observation end time (MET)	247561830.184000	247562902.08953			
Observation end date	2005-11-05T07:09:26	2005-11-05T07:28:22			
Read mode	TIMED	TIMED			

## 2.3 Aspect

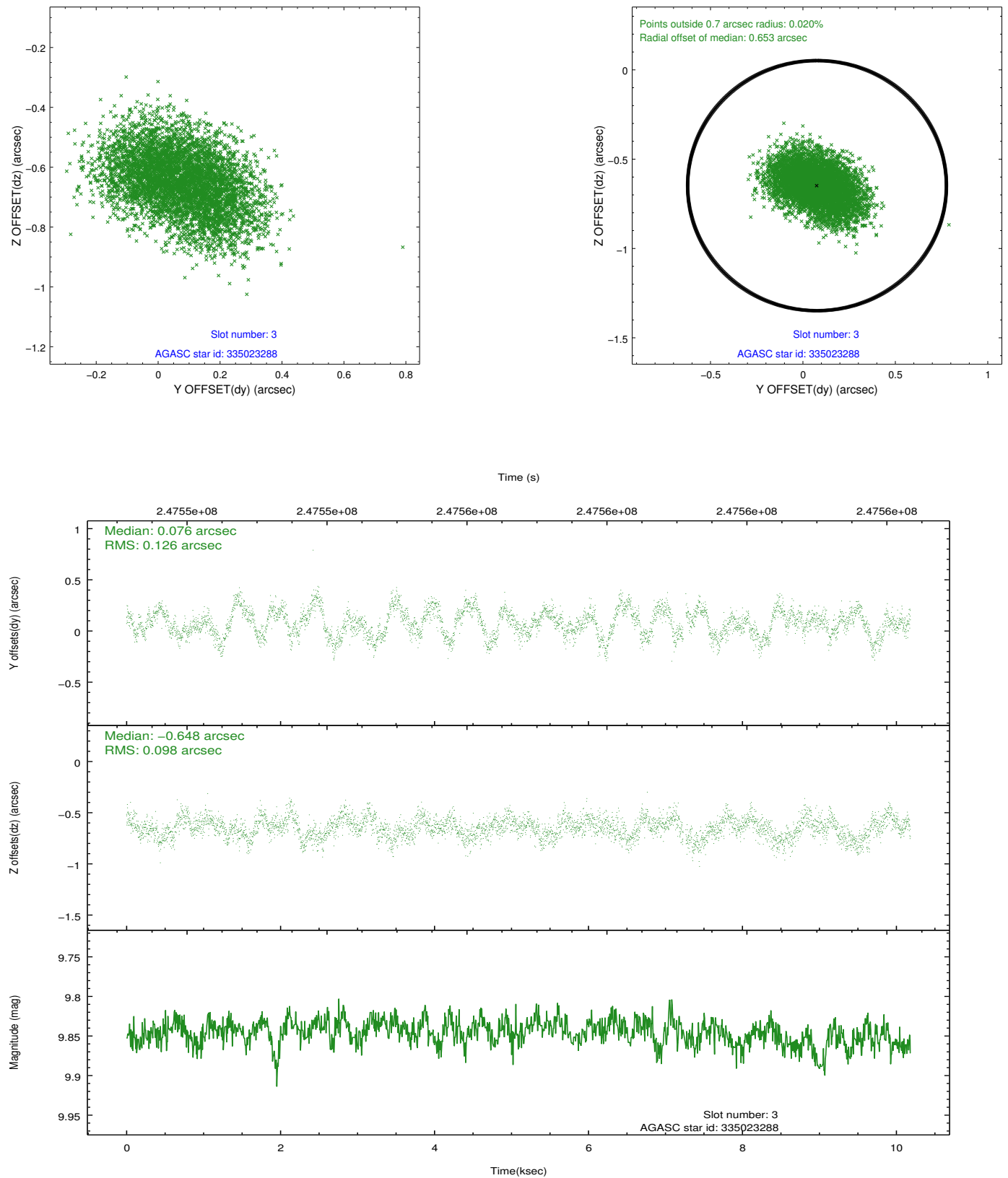


### Slot Statistics

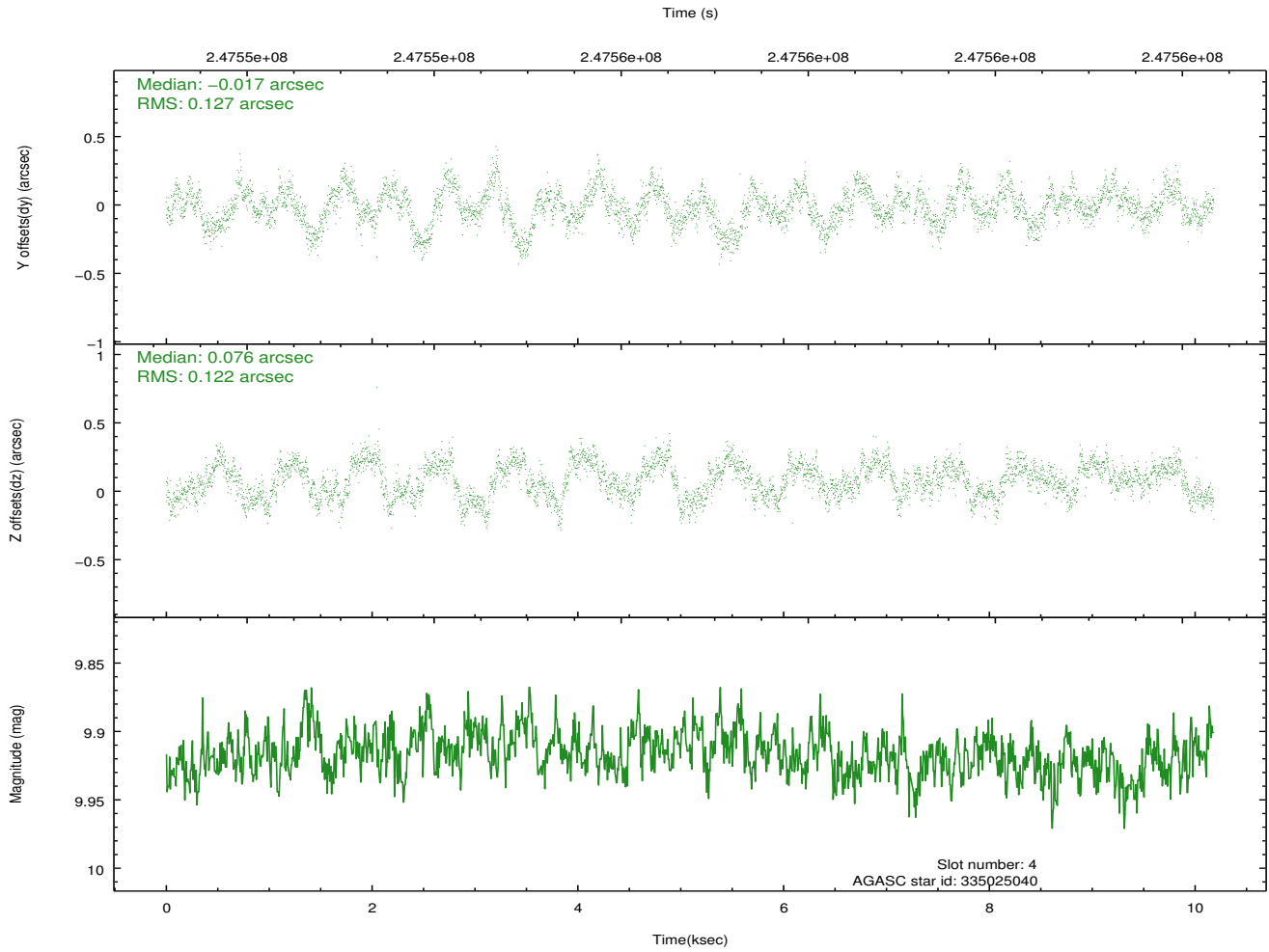
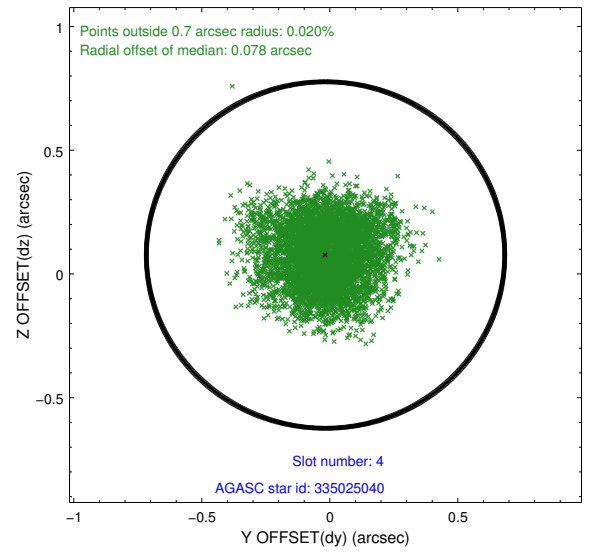
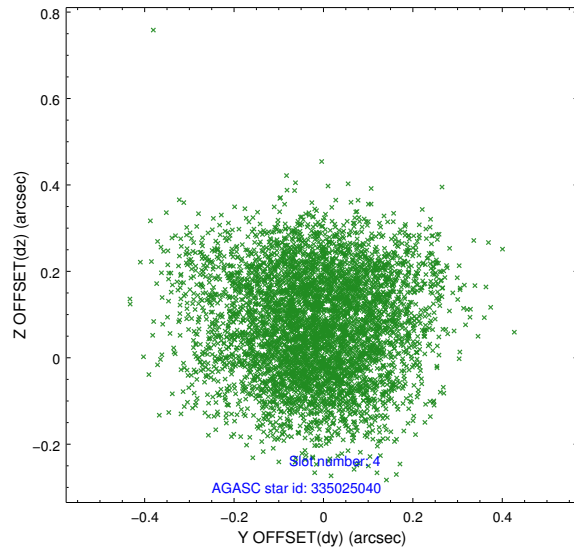
slot	status	id	mag	n_pts	med_dy	med_dz	dr1	dr2	ra	dec	mean_y	mean_z
0	FID	ACIS-I-1	7.24	2476	0.047	-0.006	0.006	0.010	0.000000	0.000000	933.70	-835.66
1	FID	ACIS-I-5	7.23	2476	-0.159	0.069	0.006	0.010	0.000000	0.000000	-1814.27	1061.72
2	FID	ACIS-I-6	7.25	2476	0.021	0.008	0.007	0.011	0.000000	0.000000	398.73	1706.69
3	GUIDE	335023288	9.85	4948	0.076	-0.648	0.171	0.273	217.791365	34.425735	-98.88	1758.02
4	GUIDE	335025040	9.92	4943	-0.017	0.076	0.190	0.300	218.601670	34.305240	2310.47	1333.64
5	GUIDE	335025848	9.73	4947	0.100	0.227	0.106	0.177	217.530531	33.778292	-880.13	-570.22
6	GUIDE	335027600	10.44	4940	0.083	0.129	0.180	0.302	218.618512	33.447101	2383.90	-1756.10
7	GUIDE	335028696	9.16	4950	-0.239	0.215	0.094	0.150	217.260519	33.844112	-1687.05	-330.37

## 2.4 Star Slots

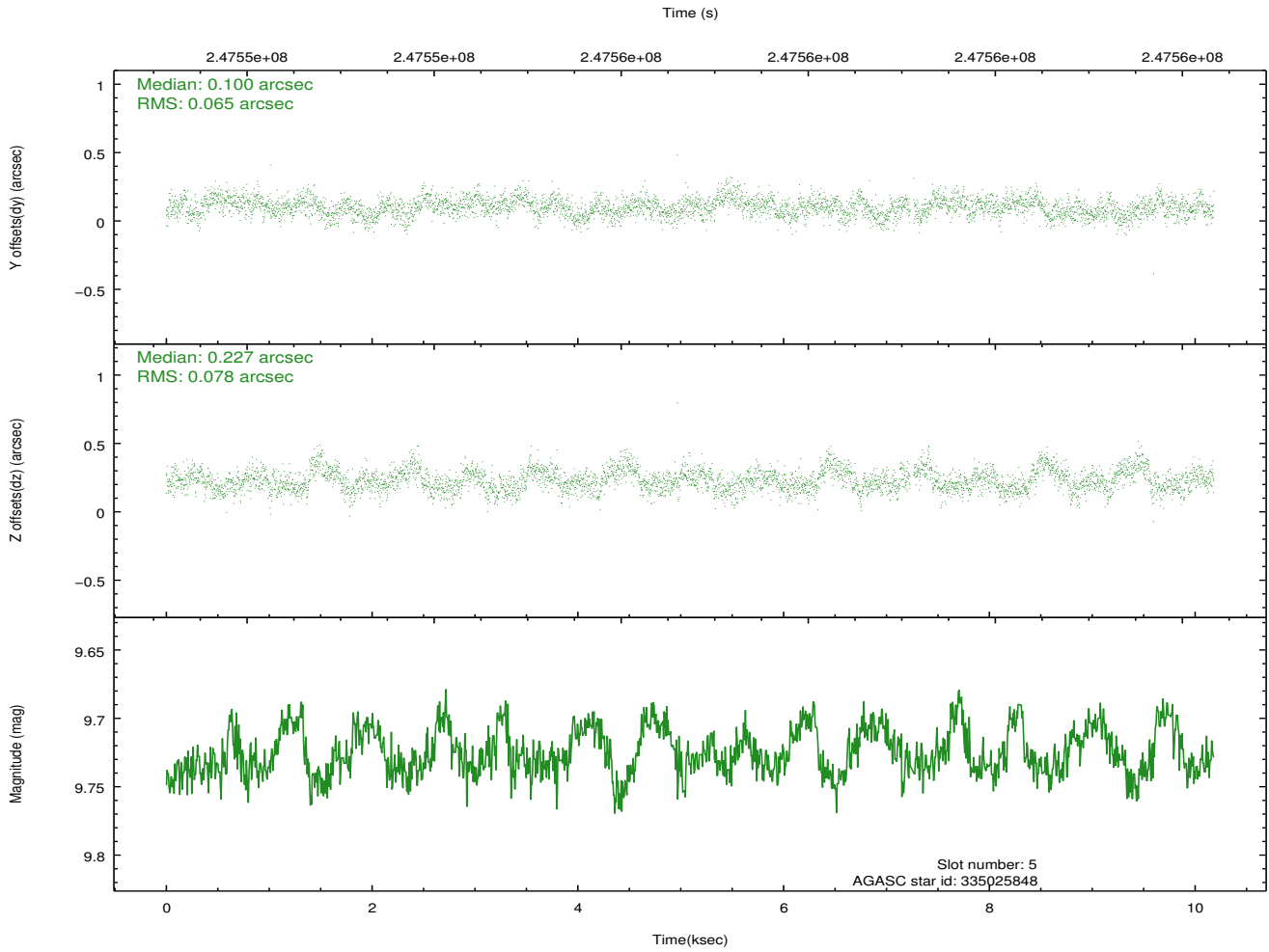
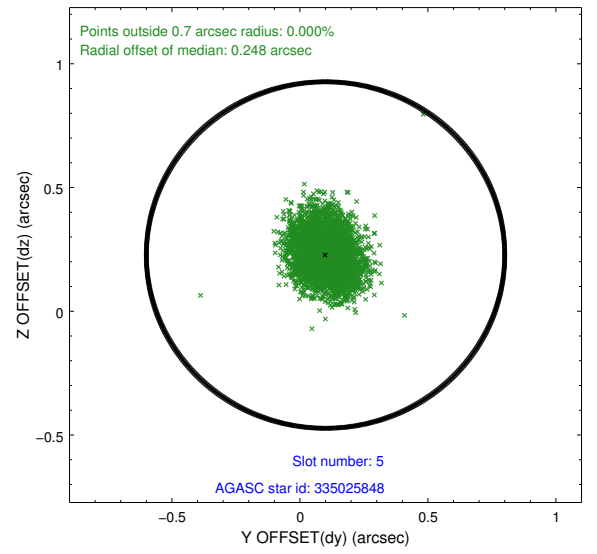
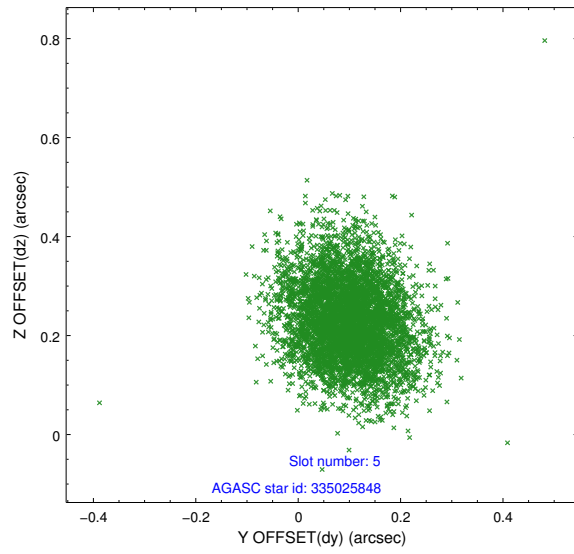
### 2.4.1 Slot 3



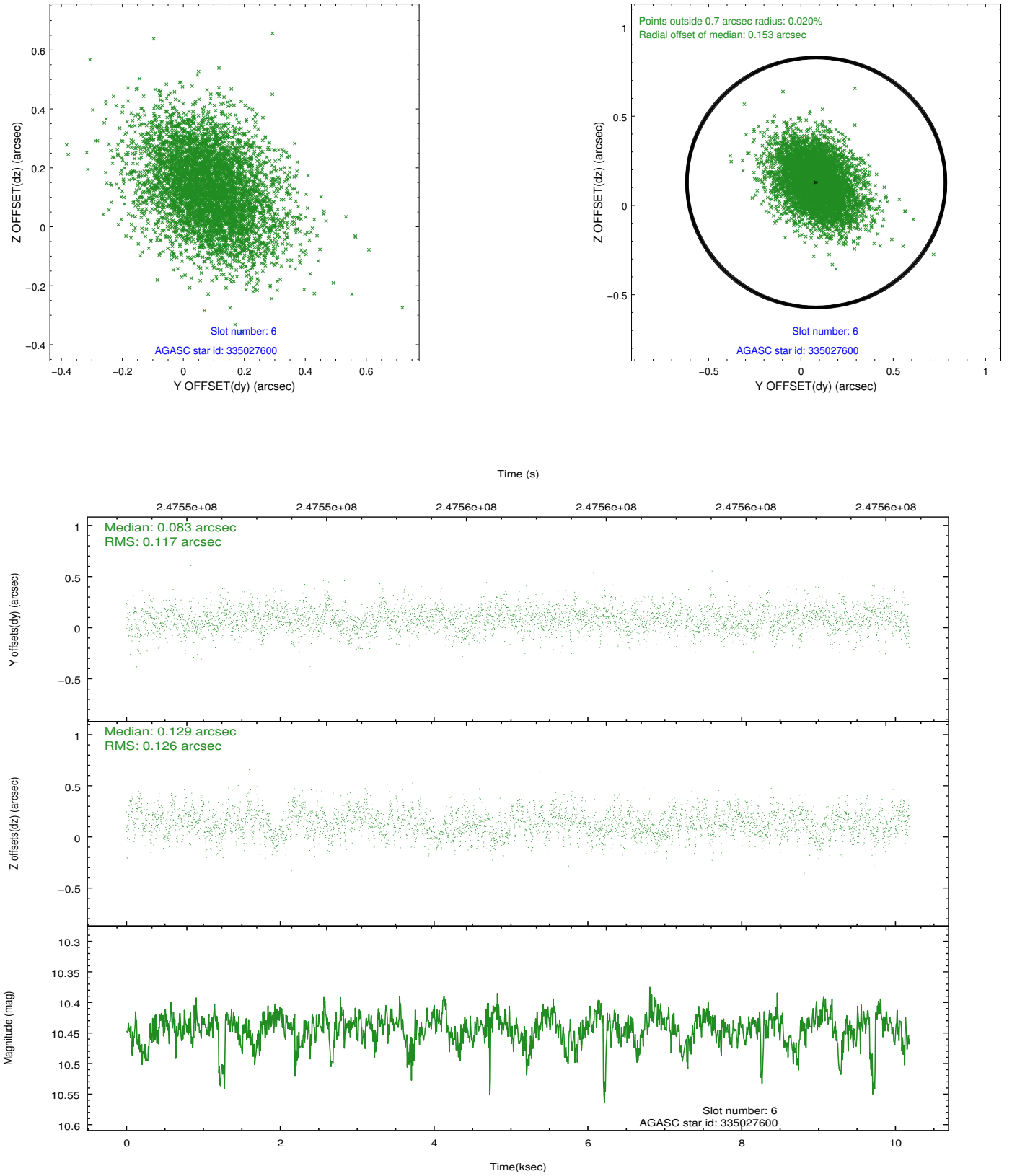
## 2.4.2 Slot 4



### 2.4.3 Slot 5

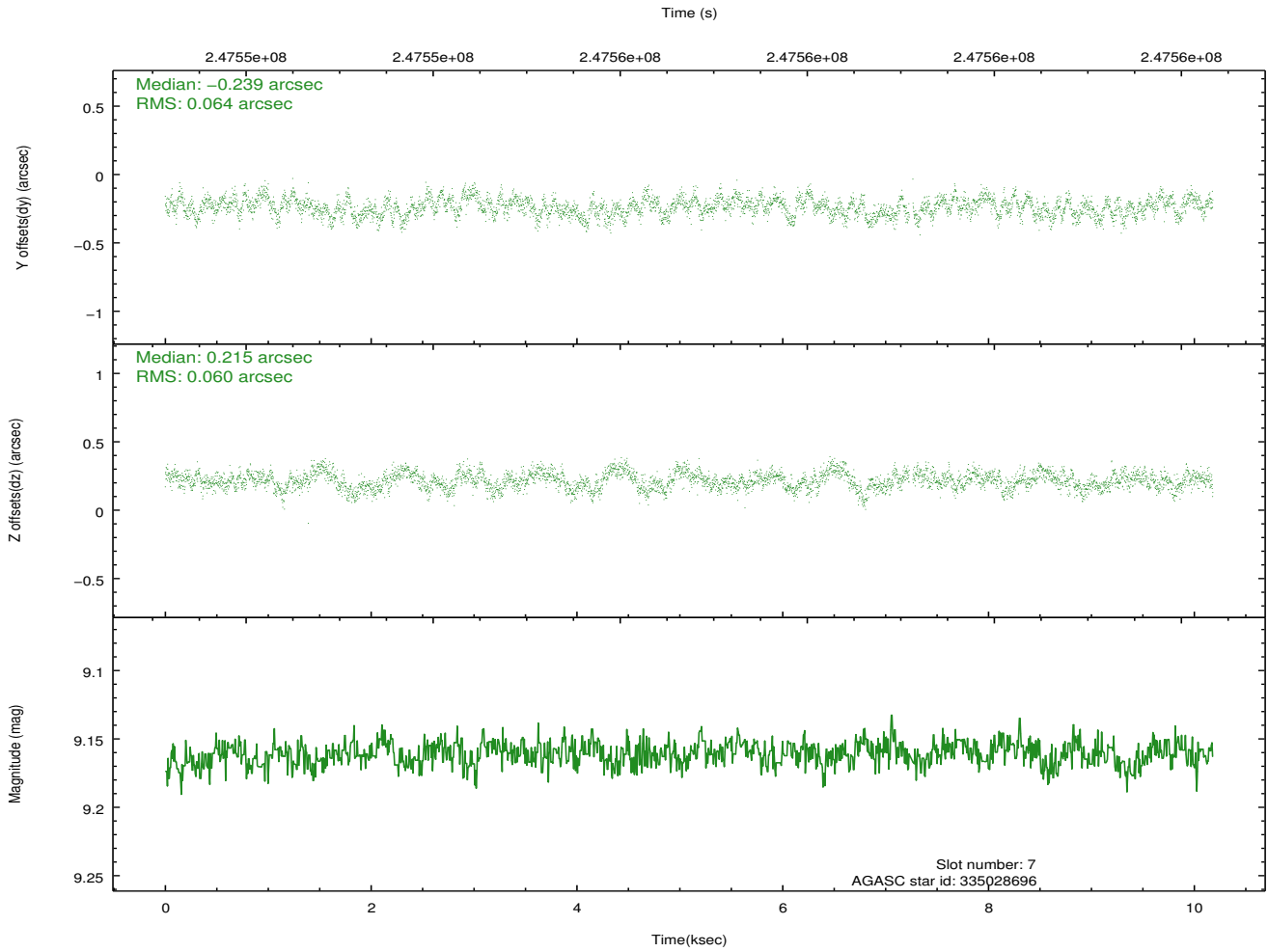
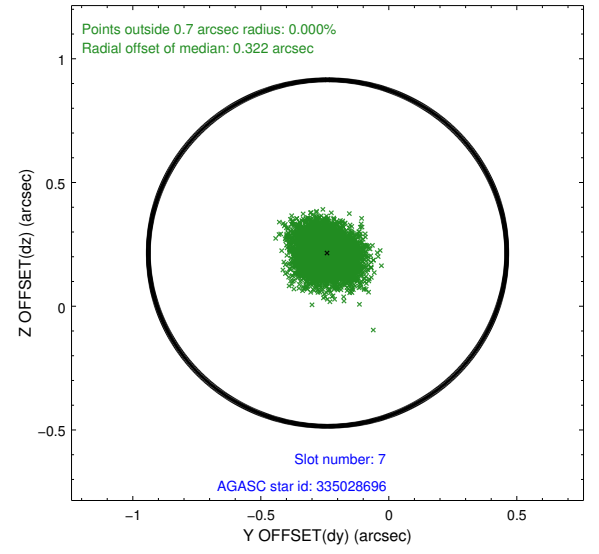
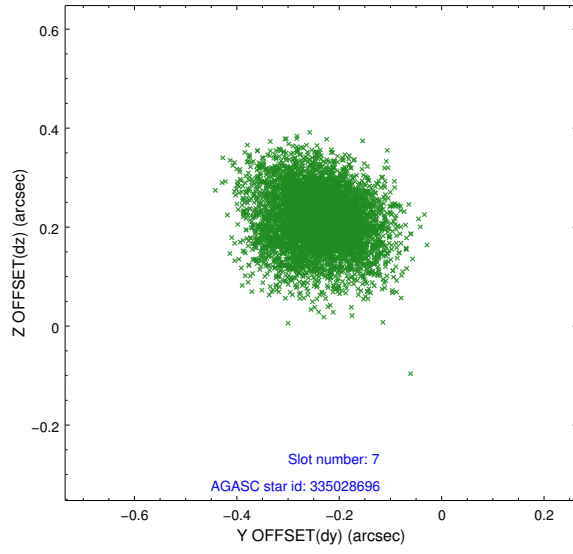


## 2.4.4 Slot 6



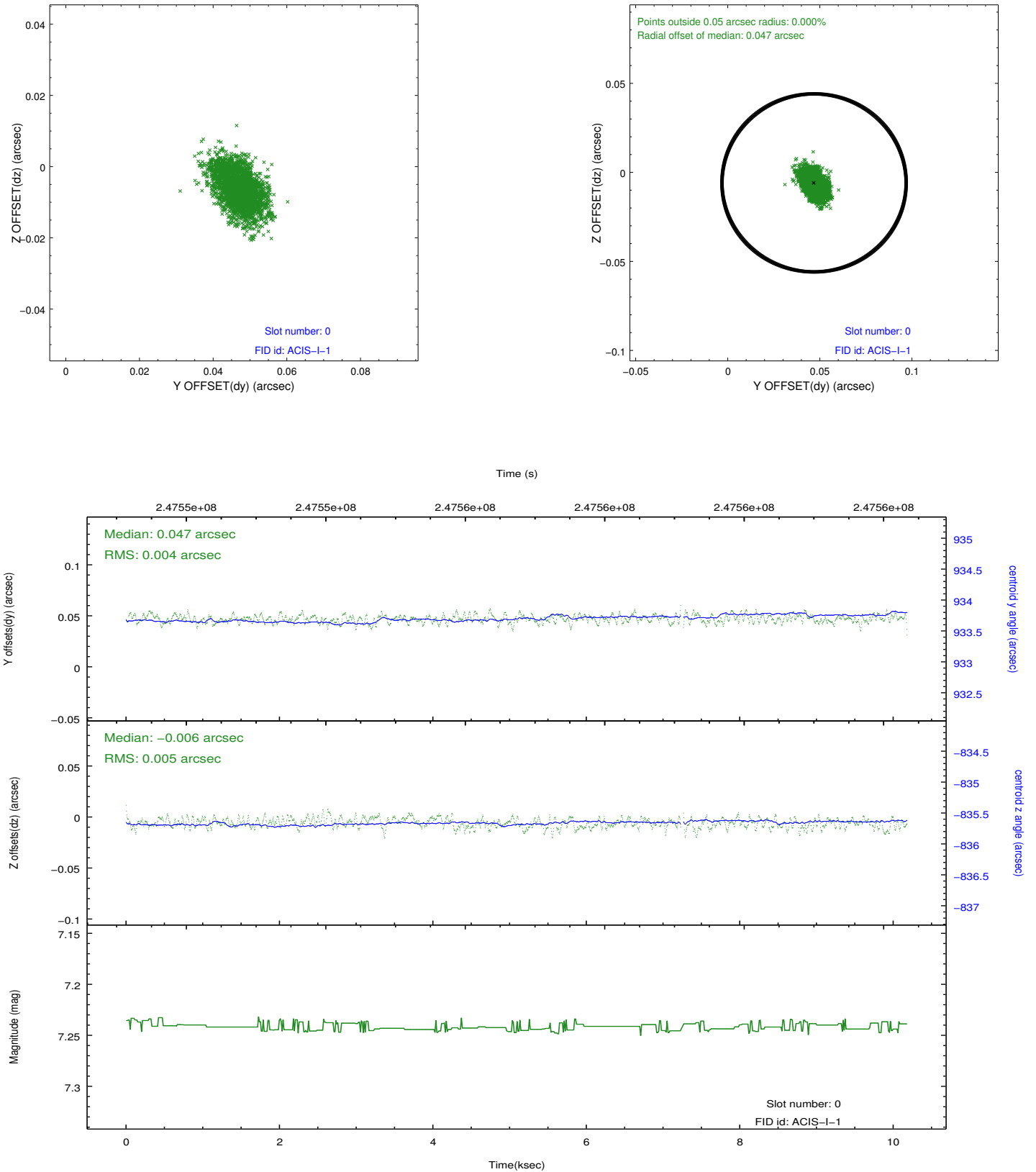


## 2.4.5 Slot 7

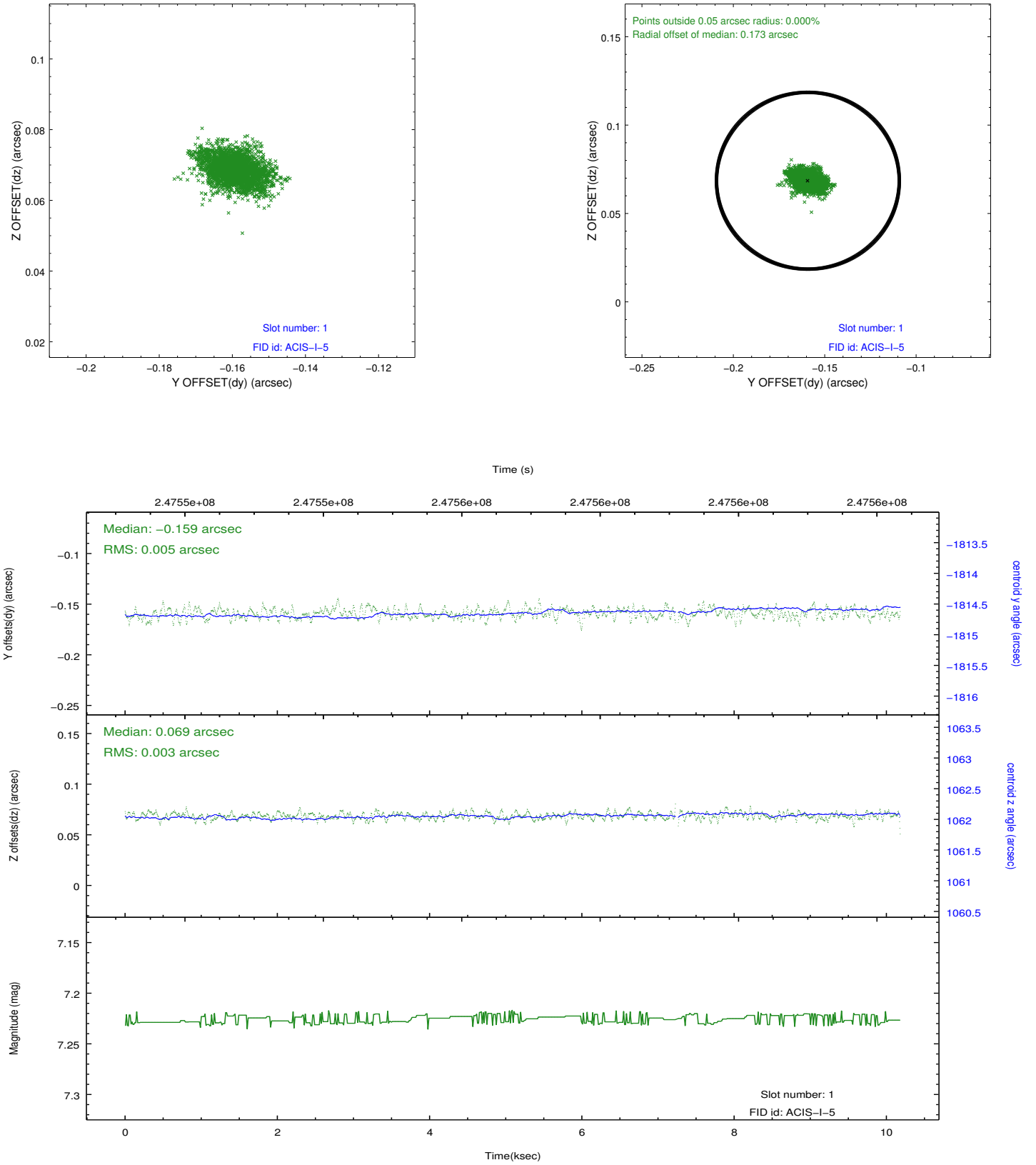


## 2.5 FID Slots

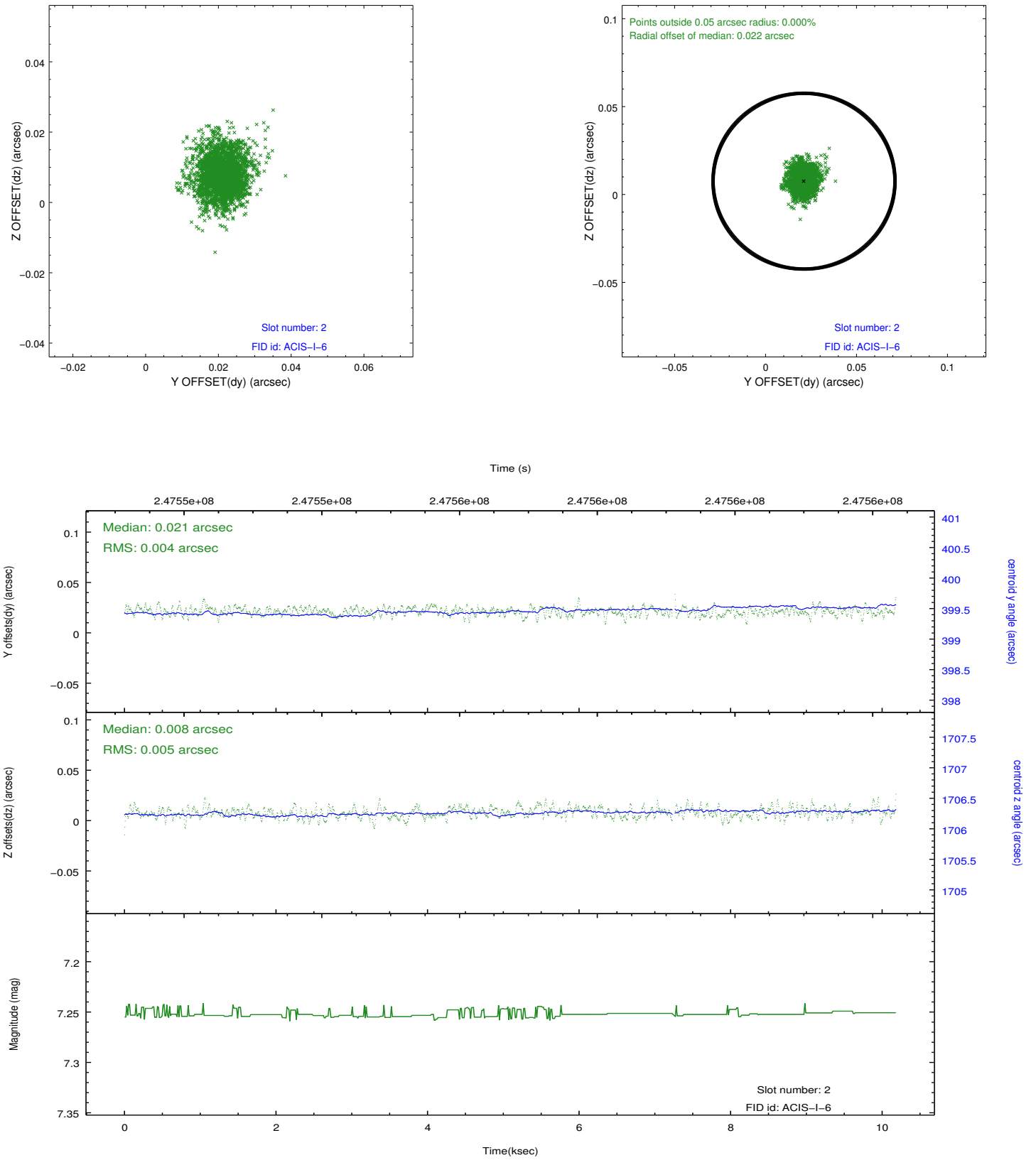
### 2.5.1 Slot 0



## 2.5.2 Slot 1



### 2.5.3 Slot 2



## A Summary

### A.1 Status

V&V Scientist	Jen Lauer
V&V Date (YYYY-MM-DD)	2013.01.28
V&V Edition	1
V&V Disposition and Status	OK
V&V Charge Time	9.706059

### A.2 Comments