

V&V Reference Report

L2 ASCDS Version : 8.4.3.1

Observation 6959 - L2 Version 2
Chandra X-Ray Center

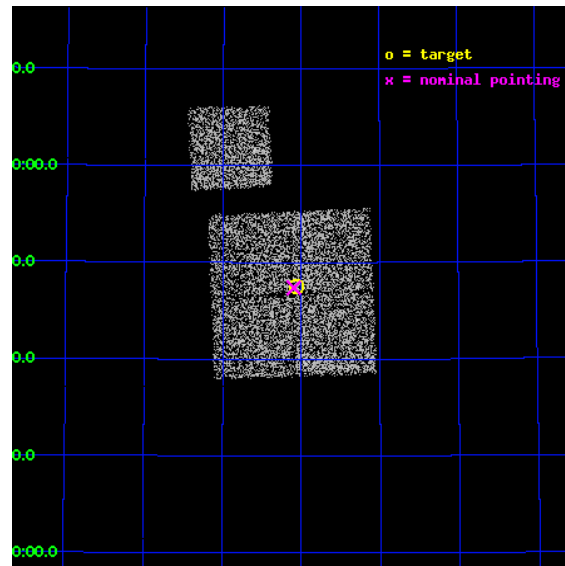
L2 Processing Date : Apr 8 2012

Contents

1	Front	2
2	OBI	3
2.1	OBI	3
2.1.1	Images	3
2.1.2	Bias	3
2.1.3	Parameters	4
2.1.4	Events	4
2.2	Compared Parameters	5
2.3	Aspect	6
2.4	Star Slots	9
2.4.1	Slot 3	9
2.4.2	Slot 4	10
2.4.3	Slot 5	11
2.4.4	Slot 6	12
2.4.5	Slot 7	13
2.5	FID Slots	14
2.5.1	Slot 0	14
2.5.2	Slot 1	15
2.5.3	Slot 2	16
A	Summary	17
A.1	Status	17
A.2	Comments	17

1 Front

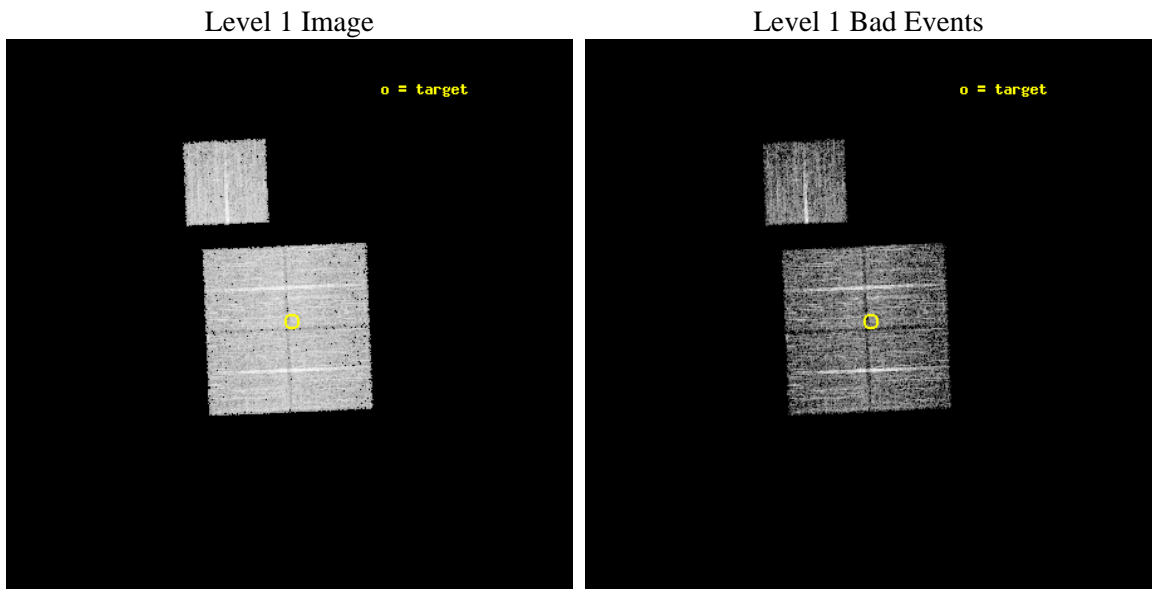
seq_num	800592	Sequence number
obs_id	6959	Observation id
title	A Search for the Origin of Ultrahigh Energy Cosmic Rays	Proposal t
observer	Prof. David Helfand	Principal investigator
object	P3	Source name
dtcycle	0	
cycle	P	events from which exps? Prim/Second/Both
ra_targ	170.016	Observer's specified target RA [deg]
dec_targ	56.7917	Observer's specified target Dec [deg]
ra_nom	170.02372365859	Nominal RA [deg]
dec_nom	56.78970473209	Nominal Dec [deg]
roll_nom	357.63060659194	Nominal Roll [deg]
revision	2	Processing version of data
ontime	4776.5979869962	Sum of GTIs [s]
livetime	4714.1882178158	Livetime [s]
ontime0	4776.4748869538	Sum of GTIs [s]
ontime1	4773.3749466538	Sum of GTIs [s]
ontime2	4773.4160065651	Sum of GTIs [s]
ontime3	4776.5979869962	Sum of GTIs [s]
ontime6	4776.433826983	Sum of GTIs [s]
l2events	14644	Number of level 2 events



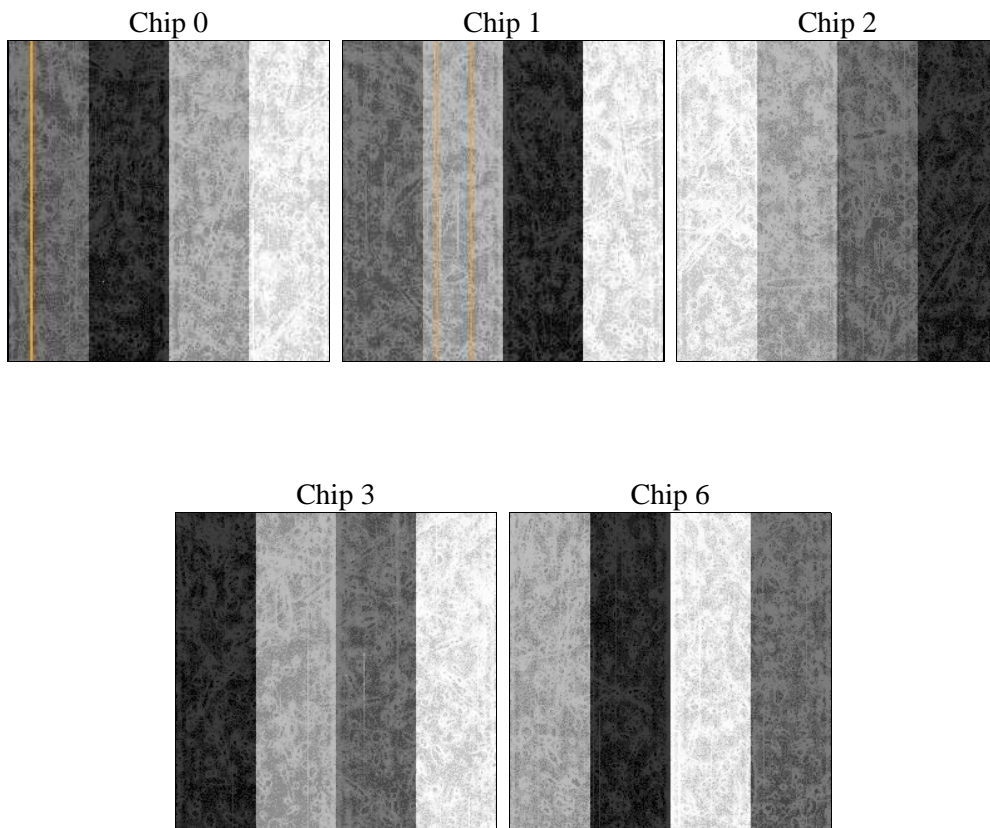
2 OBI

2.1 OBI

2.1.1 Images



2.1.2 Bias



2.1.3 Parameters

obi_num	0	Obi number	sched_exp_time	5000.000000	[s] Scheduled observation exposure time
ascdsver	8.4.3.1	Processing system revision	ontime	4776.5979869962	Sum of GTIs [s]
caldsver	4.4.9	 	ontime0	4776.4748869538	Sum of GTIs [s]
date	2012-04-08T19:36:35	Date and time of file creation	ontime1	4773.3749466538	Sum of GTIs [s]
revision	2	Processing version of data	ontime2	4773.4160065651	Sum of GTIs [s]
			ontime3	4776.5979869962	Sum of GTIs [s]
			ontime6	4776.433826983	Sum of GTIs [s]
			l1events	175213	Number of level 1 events

2.1.4 Events

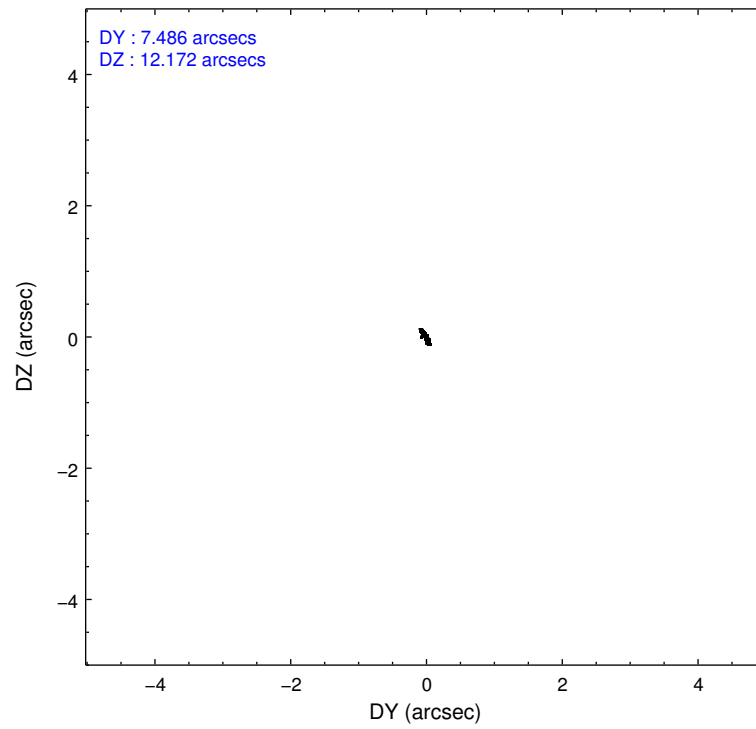
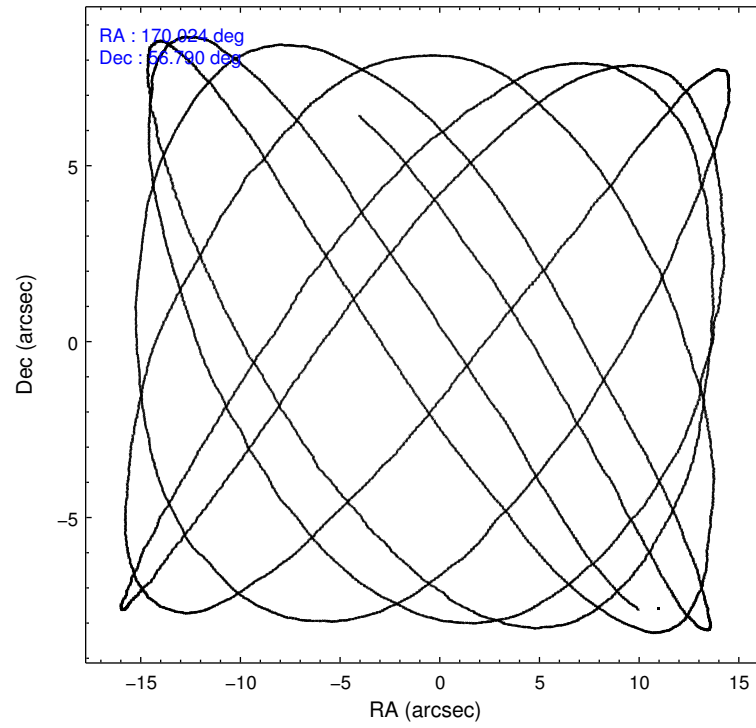
	ccd 0	ccd 1	ccd 2	ccd 3	ccd 6
level 1 events	34617	32844	37931	34987	34834
rejected events	31032	28921	34513	31667	31366
rejected %	89%	88%	90%	90%	90%

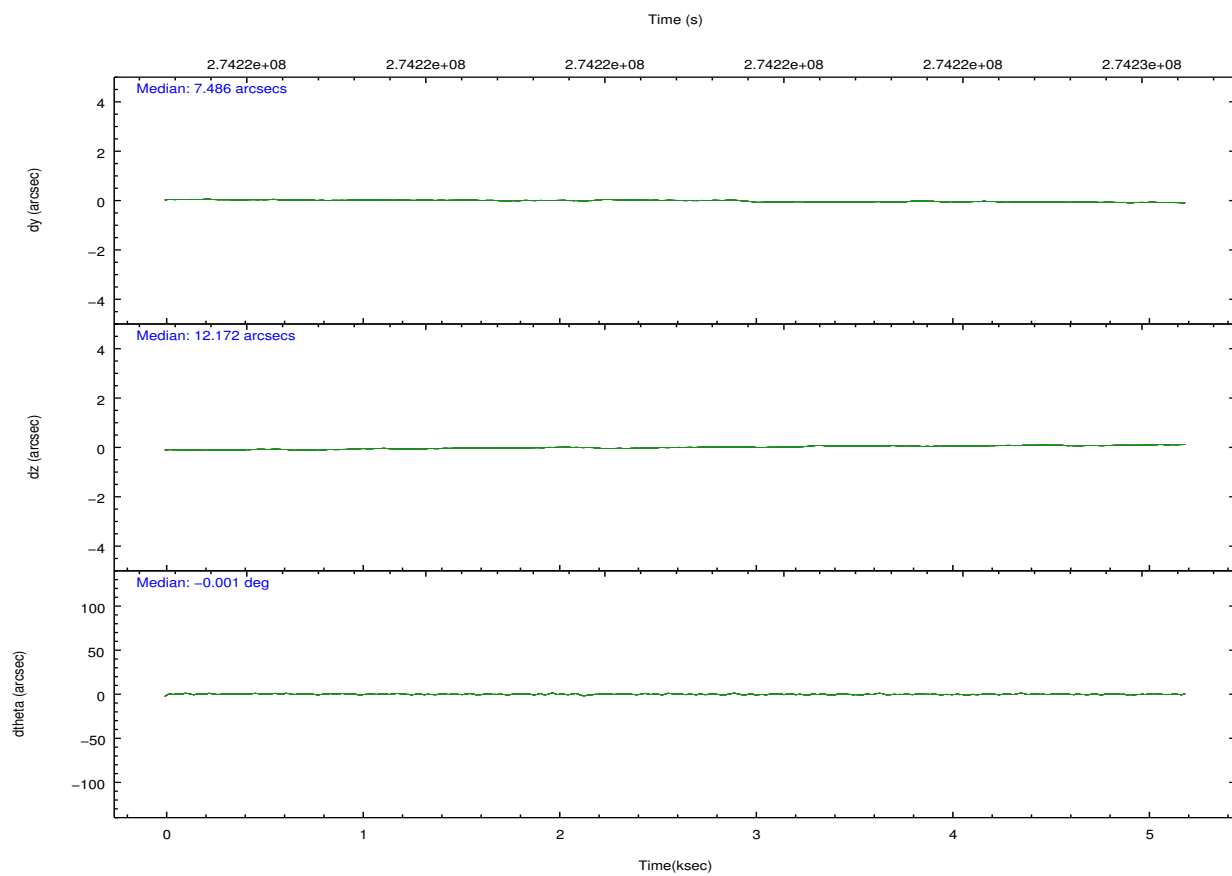
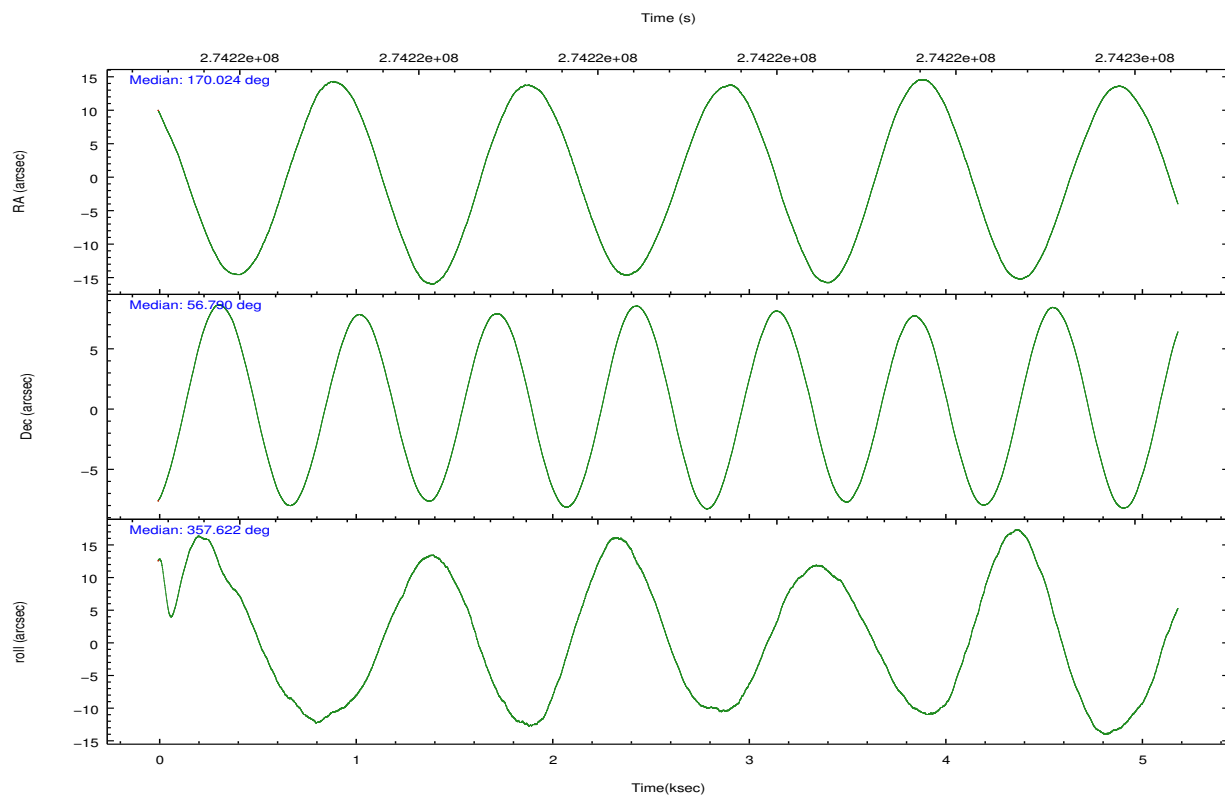
	ccd 0	ccd 1	ccd 2	ccd 3	ccd 6
grade 0 events	1216	1441	1249	1196	1214
	3%	4%	3%	3%	3%
grade 1 events	18	23	18	20	10
	0%	0%	0%	0%	0%
grade 2 events	903	863	809	713	725
	2%	2%	2%	2%	2%
grade 3 events	397	425	379	409	389
	1%	1%	0%	1%	1%
grade 4 events	379	431	379	374	417
	1%	1%	0%	1%	1%
grade 5 events	1283	1372	1144	1393	1431
	3%	4%	3%	3%	4%
grade 6 events	695	764	603	631	727
	2%	2%	1%	1%	2%
grade 7 events	29726	27525	33350	30251	29921
	85%	83%	87%	86%	85%

2.2 Compared Parameters

Parameter	Planned	Actual	Parameter	Planned	Actual
Instrument	ACIS	ACIS	Obspar format version number	7	7
Detector	ACIS-01236	ACIS-01236	Obspar file type	PREDICTED	ACTUAL
Grating	NONE	NONE	Obspar update status	NONE	UPDATED
Data mode	VFAINT	VFAINT	Number of optional ACIS chips dropped	0	0
Observation mode	POINTING	POINTING	On-chip summing requested	N	N
[deg] Pointing RA	169.979470	170.0237236585913	Subarray requested	NONE	NONE
[deg] Pointing Dec	56.776920	56.78970473209025	Alternating exposures requested	N	N
[deg] Pointing Roll	357.458930	357.630606591942	[s] Primary exposure time	0.000000	3.1
[mm] SIM focus pos	-0.782348	-0.7809083437167272			
[mm] SIM defocus	0	0.001439871863259334			
[mm] SIM translation stage pos	-233.592463	-233.5874344608287			
[mm] SIM translation stage offset	0	-0.005018542100998502			
[s] Observation start time (MET)	274220982.184000	274220605.69371			
Observation start date	2006-09-09T20:28:37	2006-09-09T20:23:25			
[s] Observation end time (MET)	274225982.184000	274226115.58147			
Observation end date	2006-09-09T21:51:57	2006-09-09T21:55:15			
Read mode	TIMED	TIMED			

2.3 Aspect



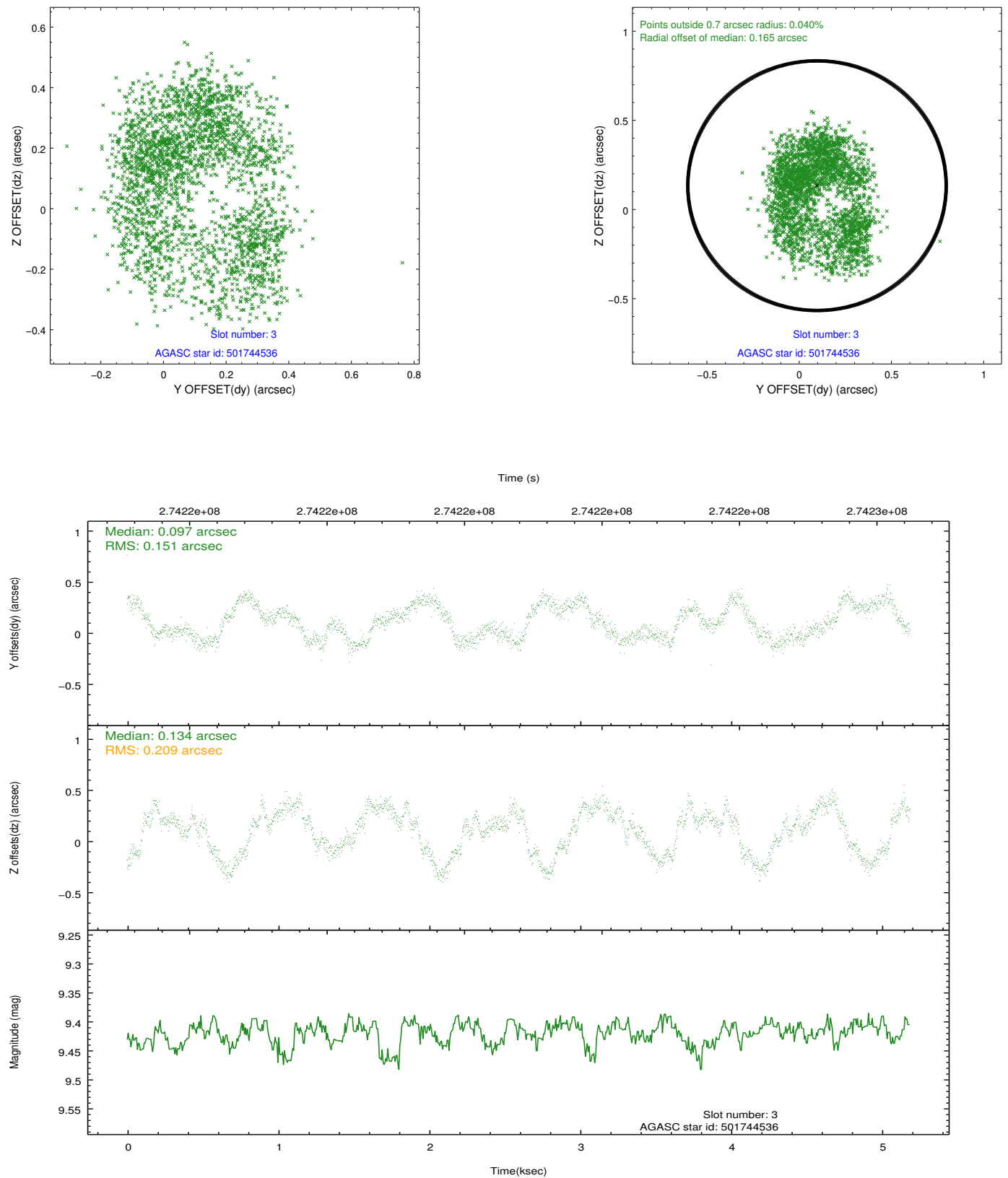


Slot Statistics

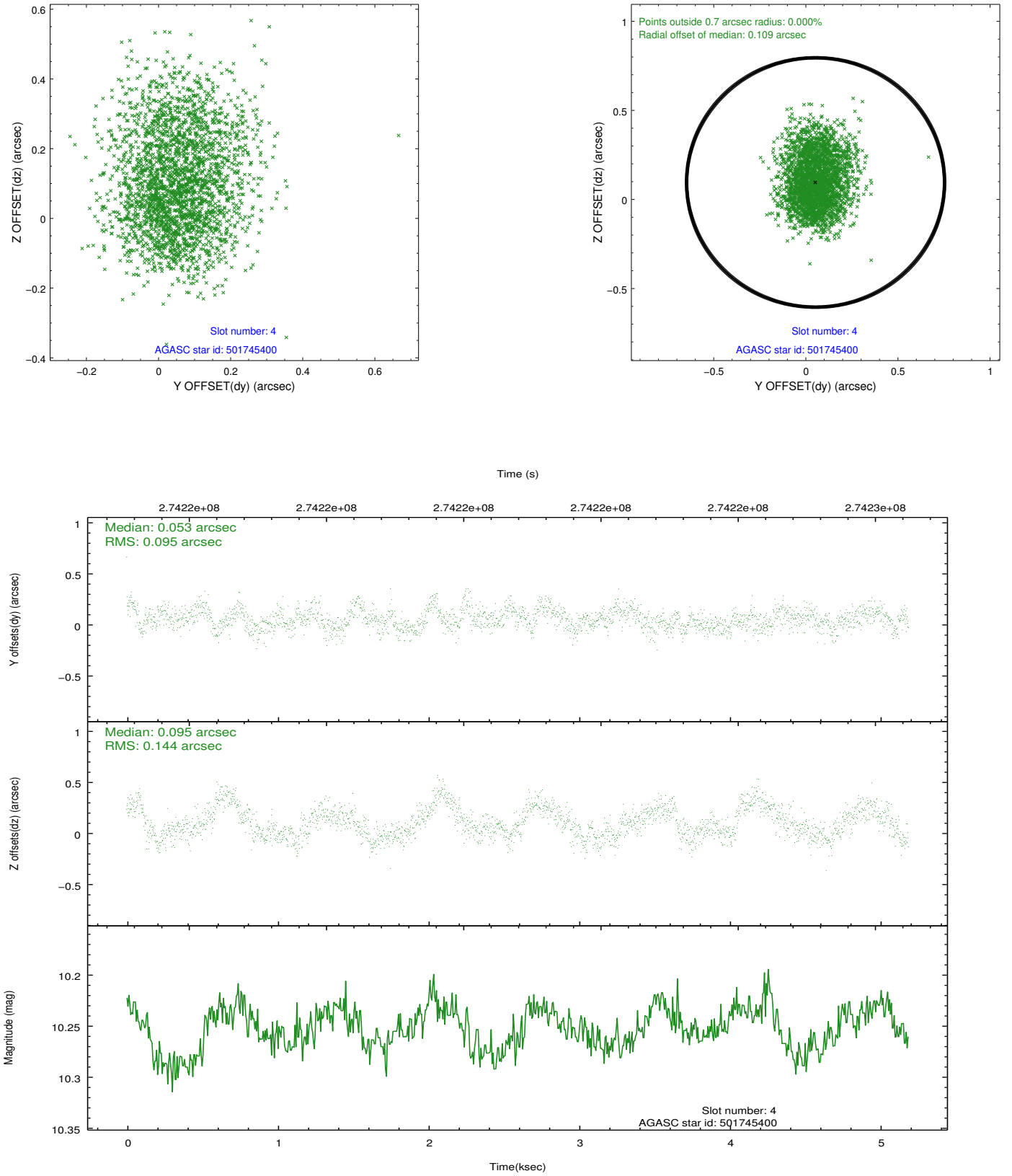
slot	status	id	mag	n_pts	med_dy	med_dz	dr1	dr2	ra	dec	mean_y	mean_z
0	FID	ACIS-I-1	7.24	1266	0.057	-0.038	0.007	0.013	0.000000	0.000000	932.24	-835.75
1	FID	ACIS-I-5	7.23	1266	-0.175	0.067	0.007	0.012	0.000000	0.000000	-1815.42	1061.30
2	FID	ACIS-I-6	7.24	1266	0.028	0.041	0.008	0.012	0.000000	0.000000	396.53	1707.07
3	GUIDE	501744536	9.42	2523	0.097	0.134	0.276	0.431	169.793252	56.284902	-292.70	-1785.39
4	GUIDE	501745400	10.25	2529	0.053	0.095	0.186	0.298	169.096679	56.322620	-1688.17	-1701.50
5	GUIDE	501745560	6.82	2532	-0.073	-0.178	0.096	0.154	170.455367	57.074858	881.48	1115.42
6	GUIDE	501745960	8.45	2531	-0.009	0.059	0.113	0.170	170.066430	56.606700	199.89	-603.85
7	GUIDE	501748320	9.51	2528	-0.061	-0.073	0.106	0.171	170.966165	57.350324	1822.86	2160.94

2.4 Star Slots

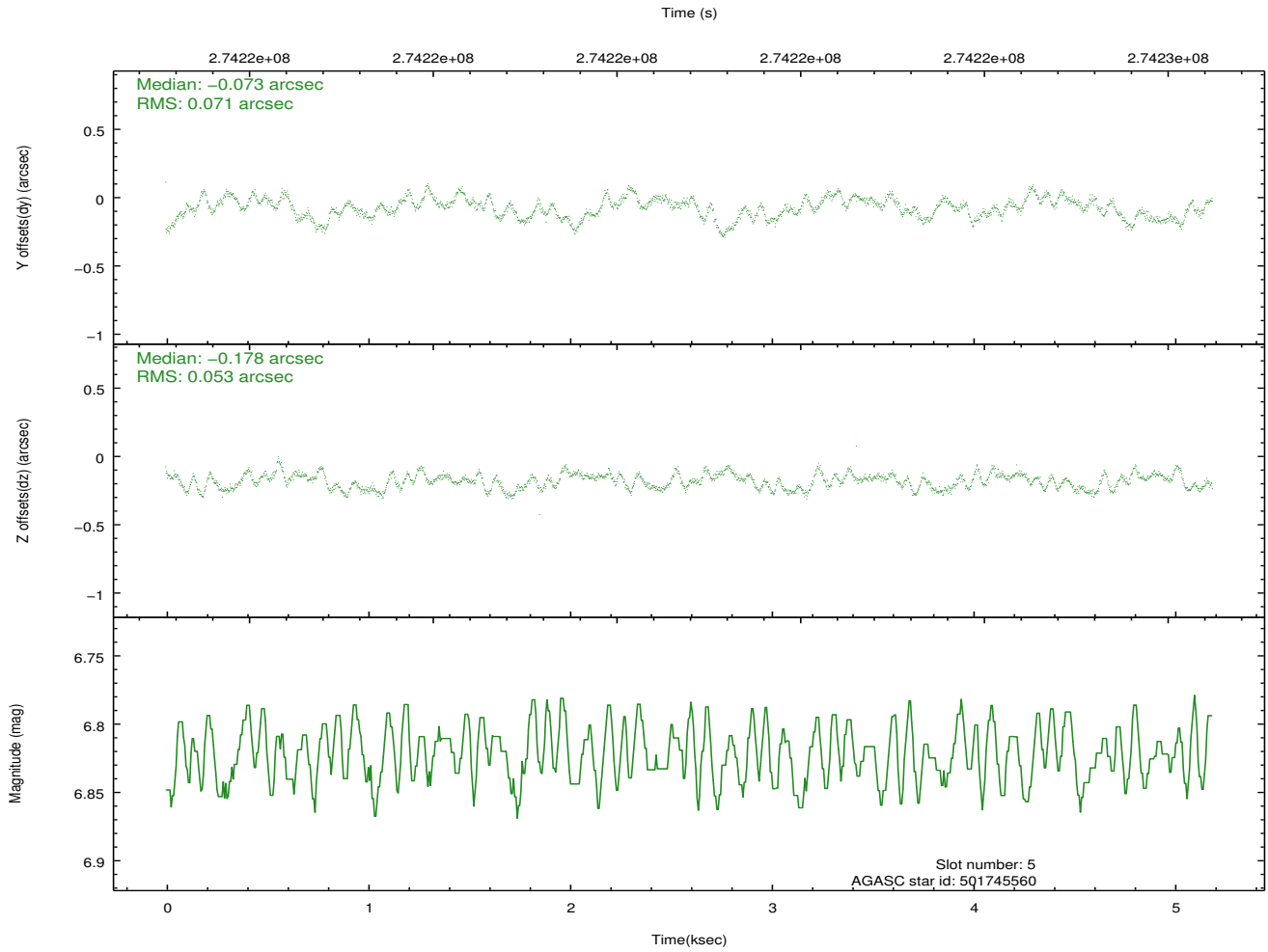
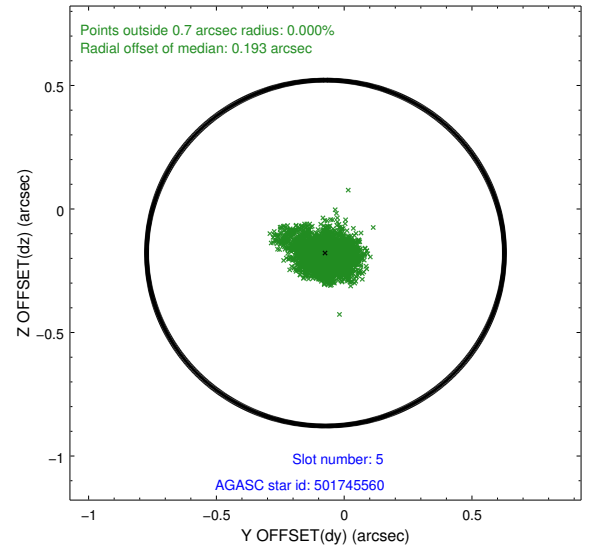
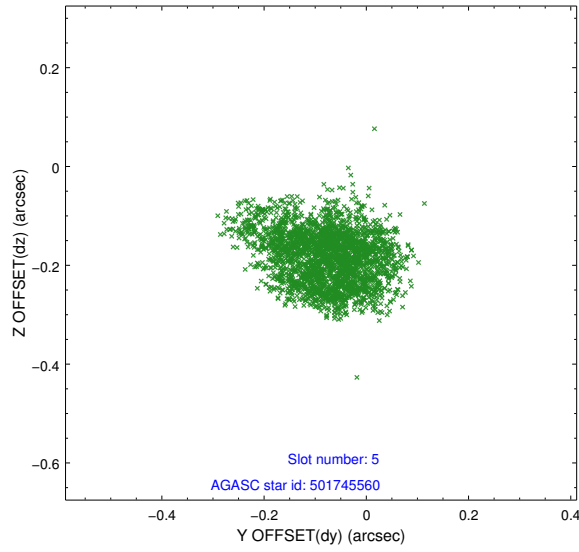
2.4.1 Slot 3



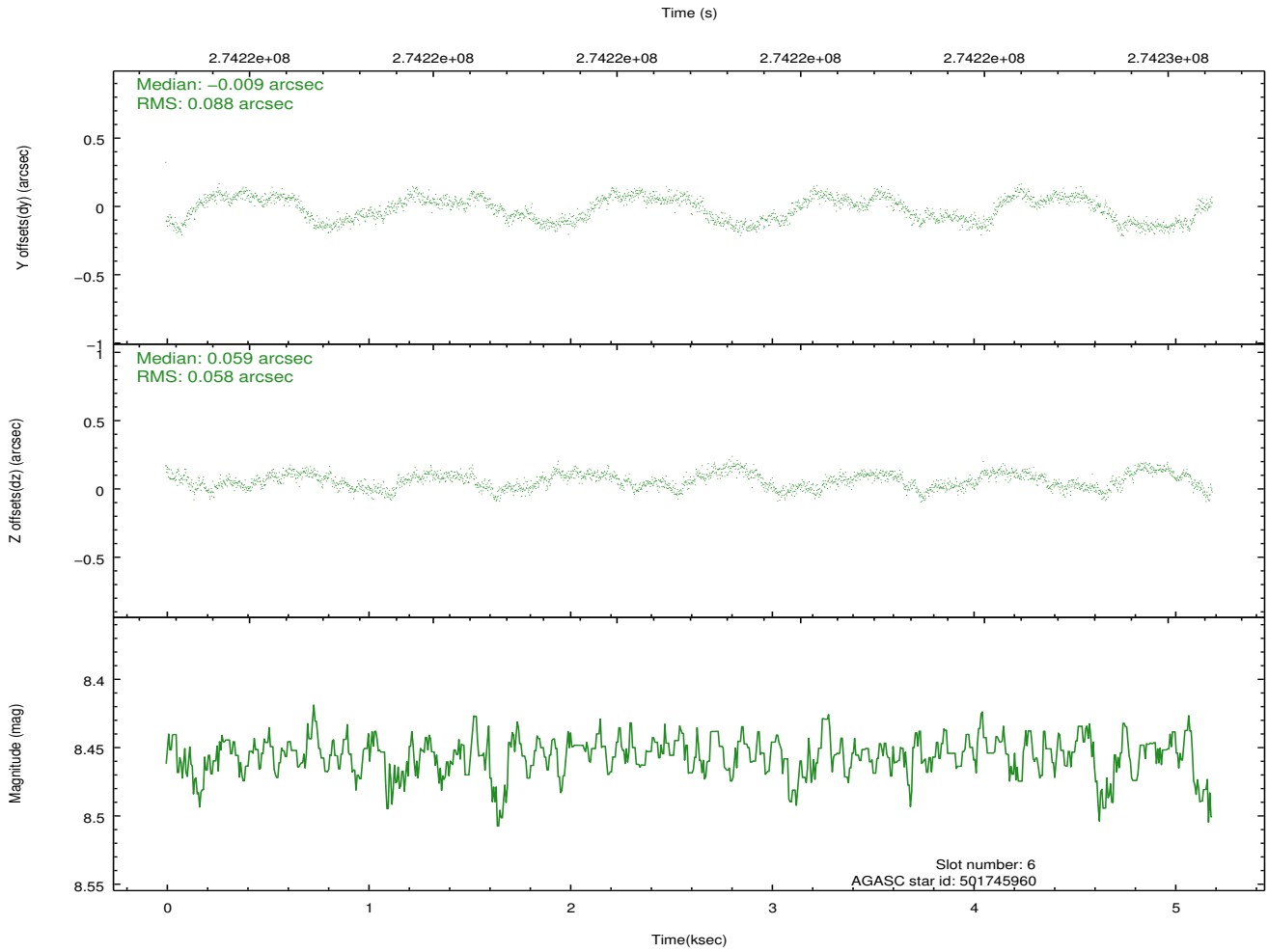
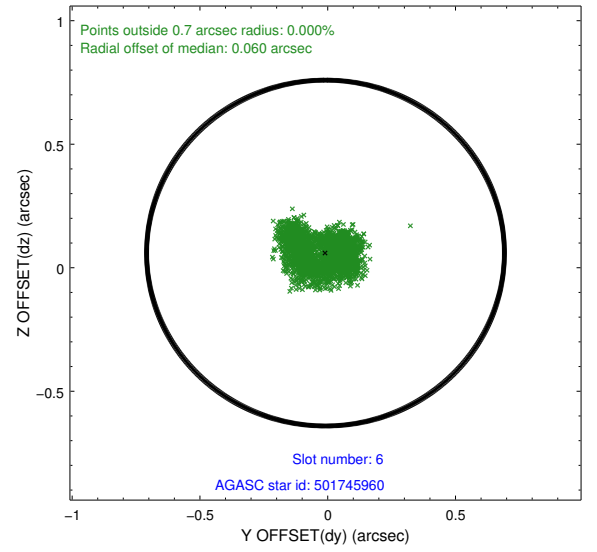
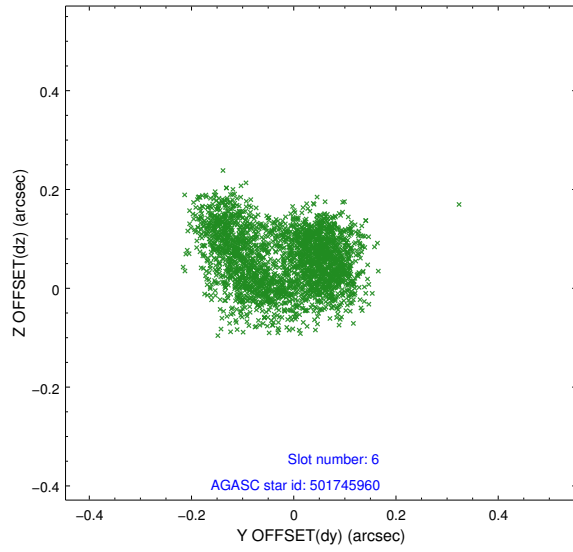
2.4.2 Slot 4



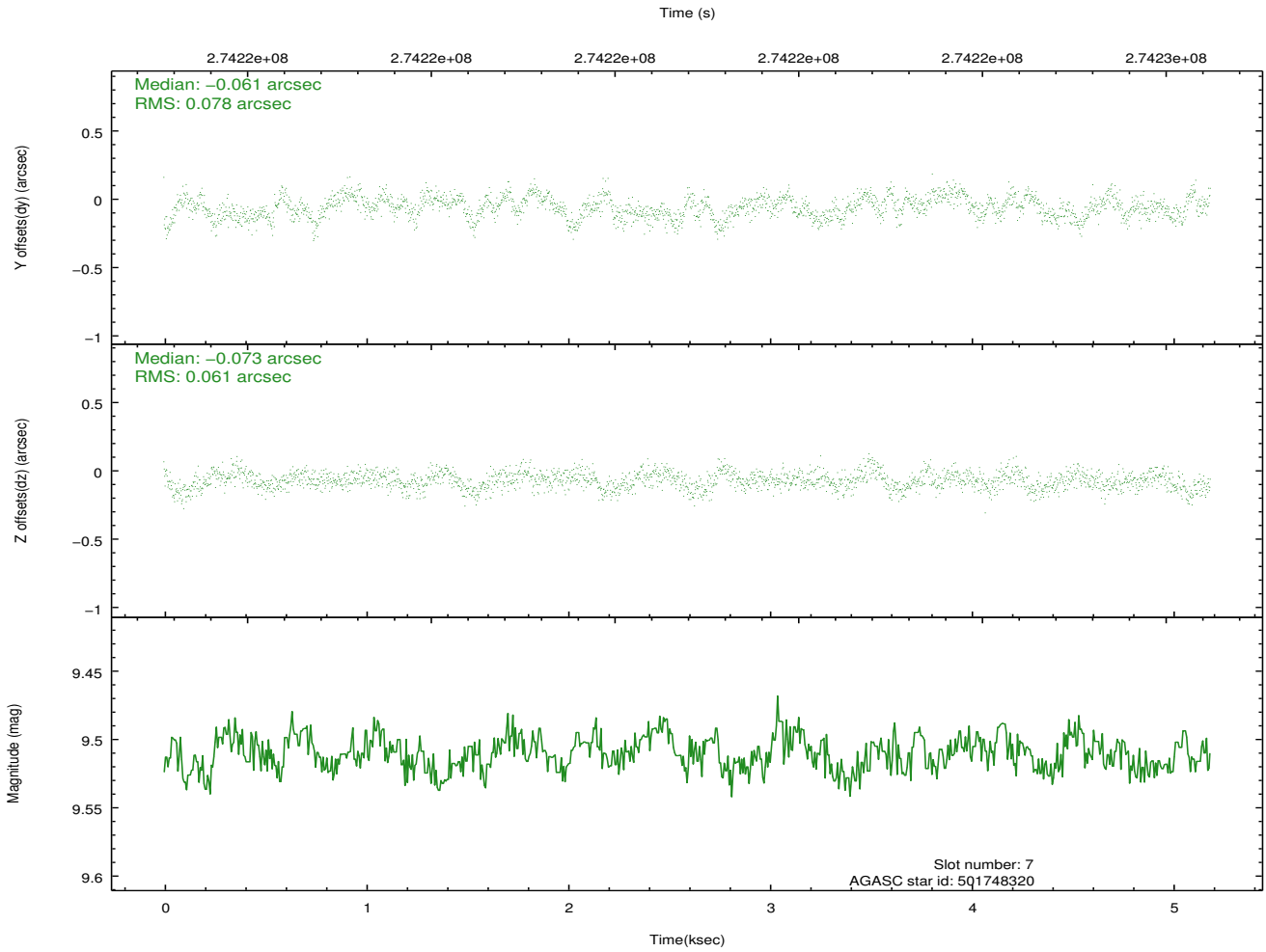
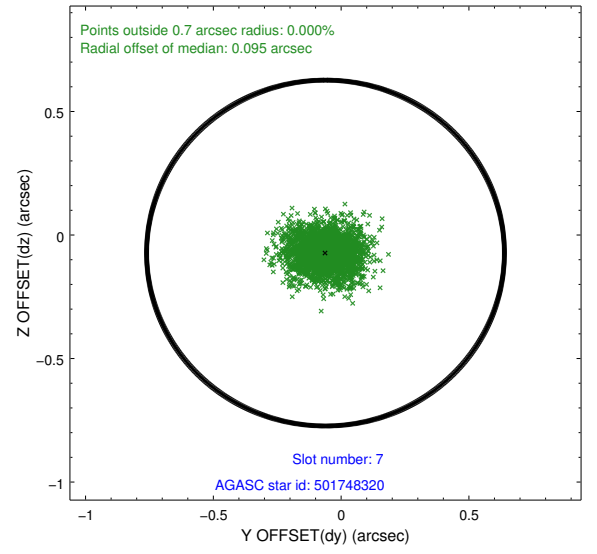
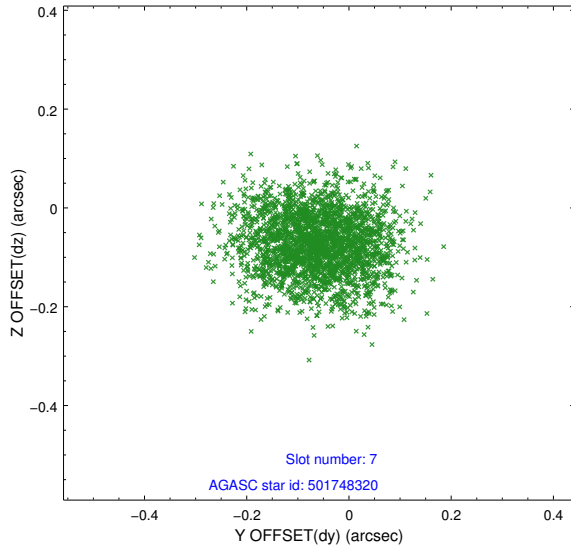
2.4.3 Slot 5



2.4.4 Slot 6

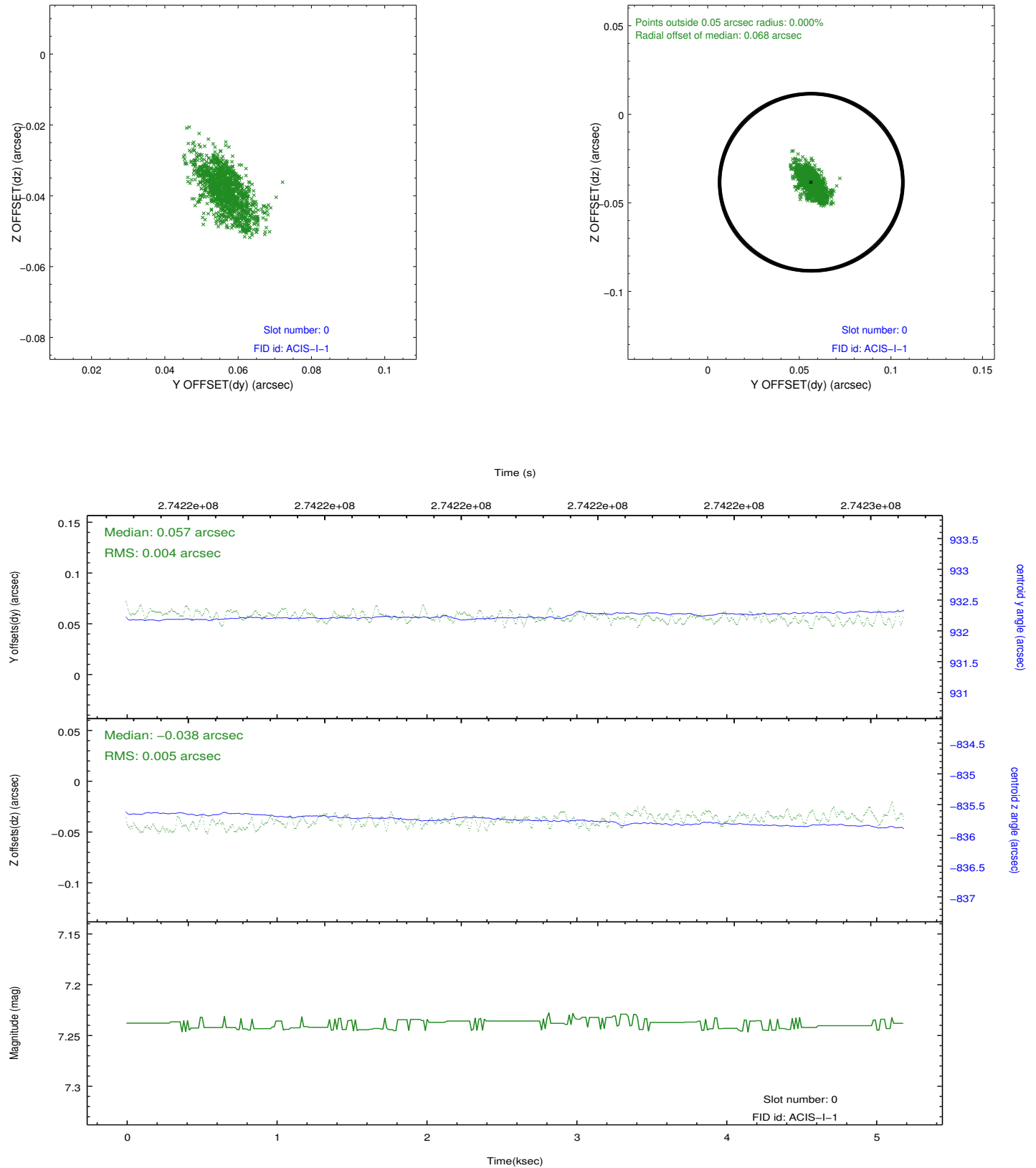


2.4.5 Slot 7

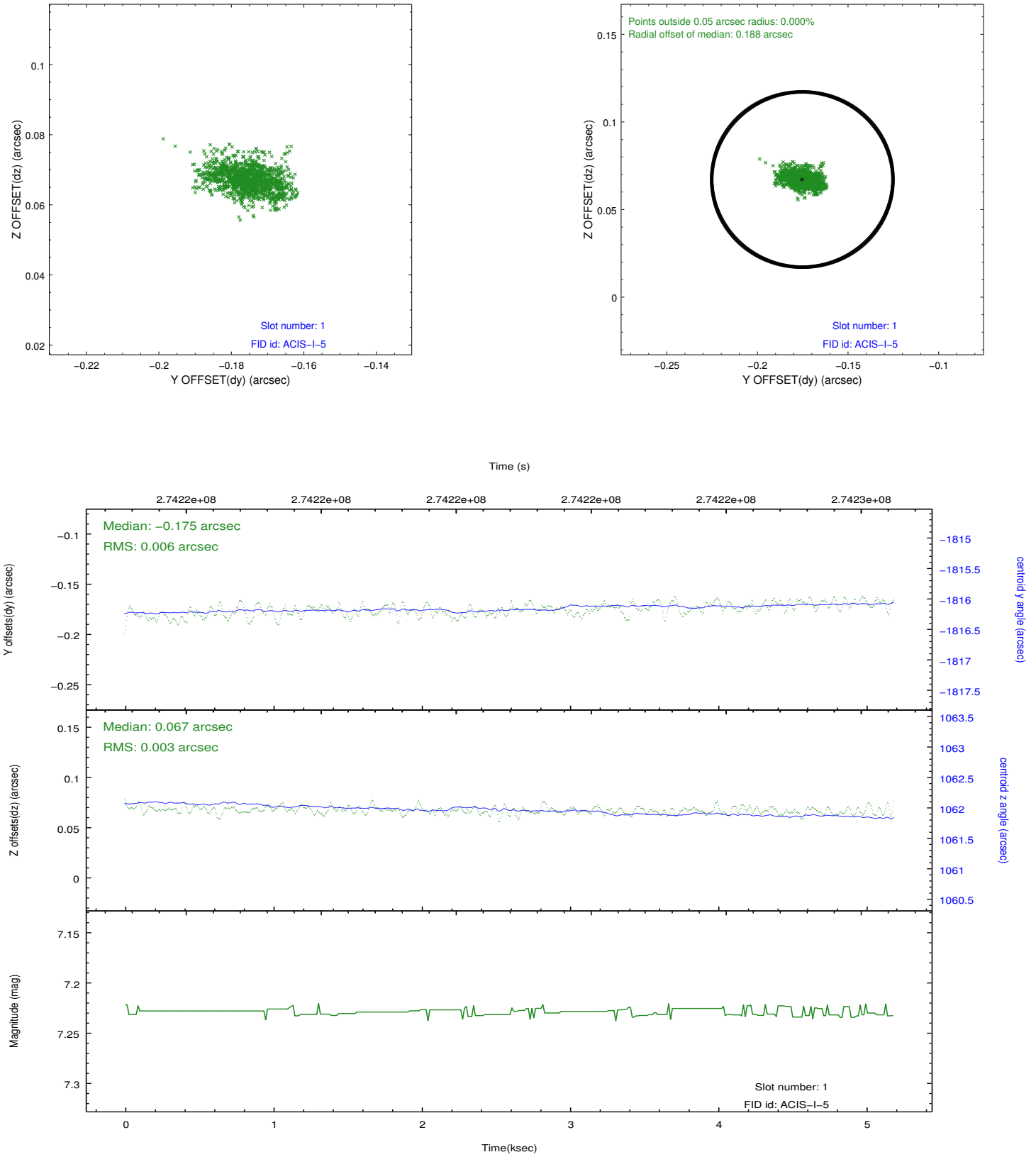


2.5 FID Slots

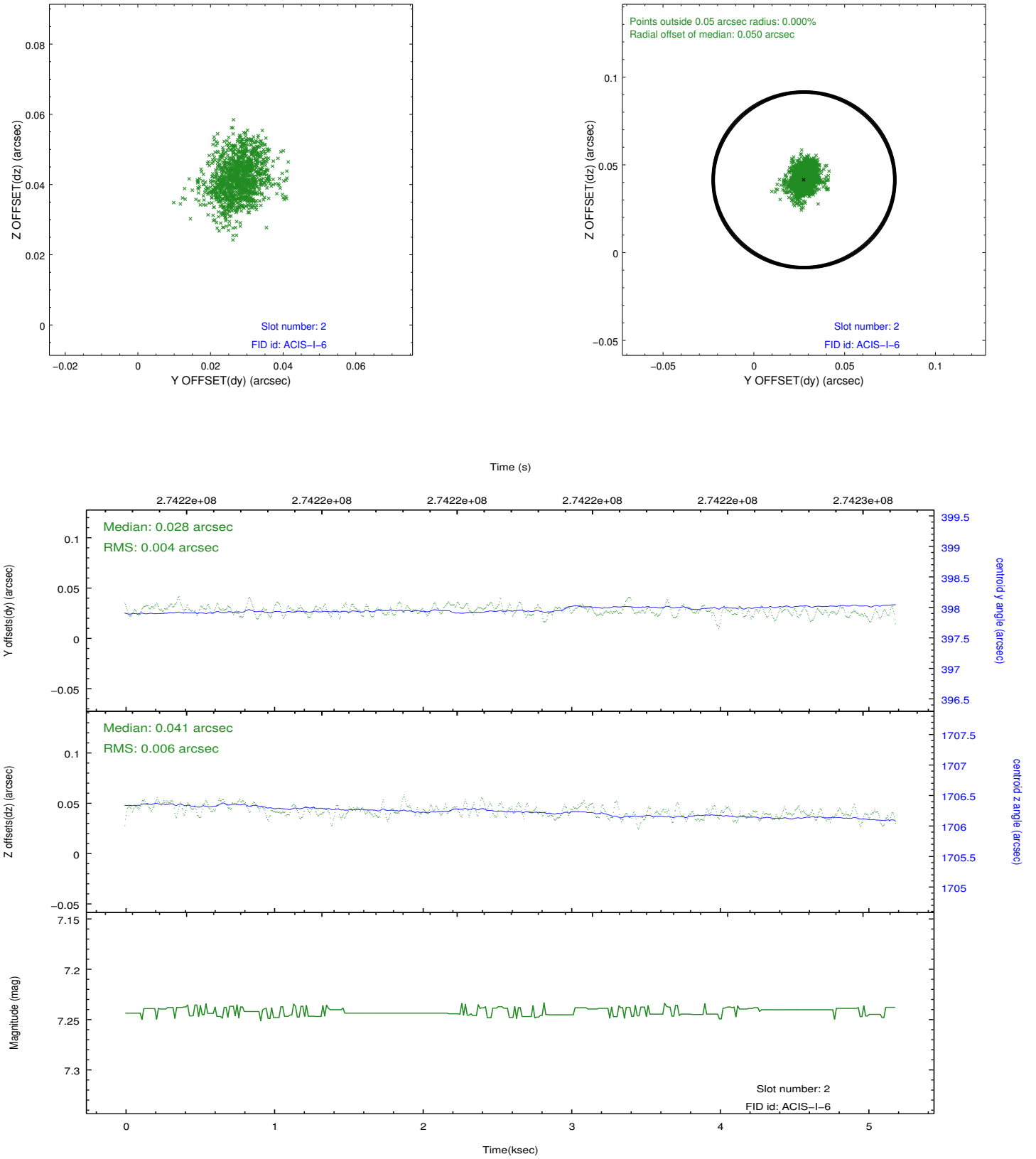
2.5.1 Slot 0



2.5.2 Slot 1



2.5.3 Slot 2



A Summary

A.1 Status

V&V Scientist	Jen Lauer
V&V Date (YYYY-MM-DD)	2012.04.09
V&V Edition	1
V&V Disposition and Status	OK
V&V Charge Time	4.77710003

A.2 Comments