

V&V Reference Report

L2 ASCDS Version : 8.4.3

Observation 6759 - L2 Version 2
Chandra X-Ray Center

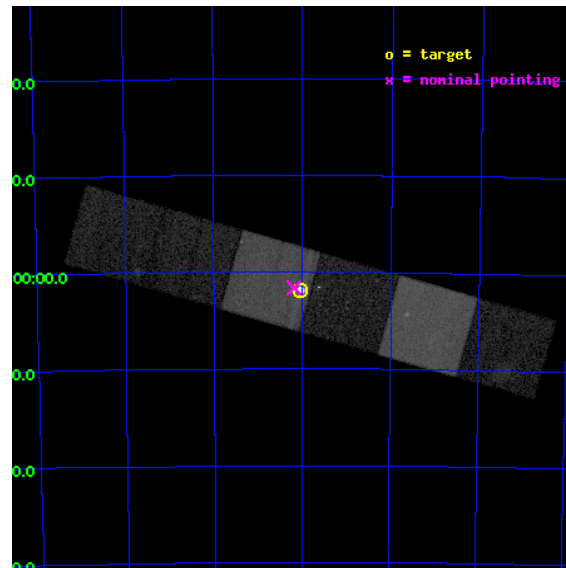
L2 Processing Date : Mar 28 2012

Contents

1	Front	2
2	OBI	3
2.1	OBI	3
2.1.1	Images	3
2.1.2	Bias	3
2.1.3	Parameters	4
2.1.4	Events	4
2.2	Compared Parameters	5
2.3	Aspect	6
2.4	Star Slots	9
2.4.1	Slot 3	9
2.4.2	Slot 4	10
2.4.3	Slot 5	11
2.4.4	Slot 6	12
2.4.5	Slot 7	13
2.5	FID Slots	14
2.5.1	Slot 0	14
2.5.2	Slot 1	15
2.5.3	Slot 2	16
A	Summary	17
A.1	Status	17
A.2	Comments	17

1 Front

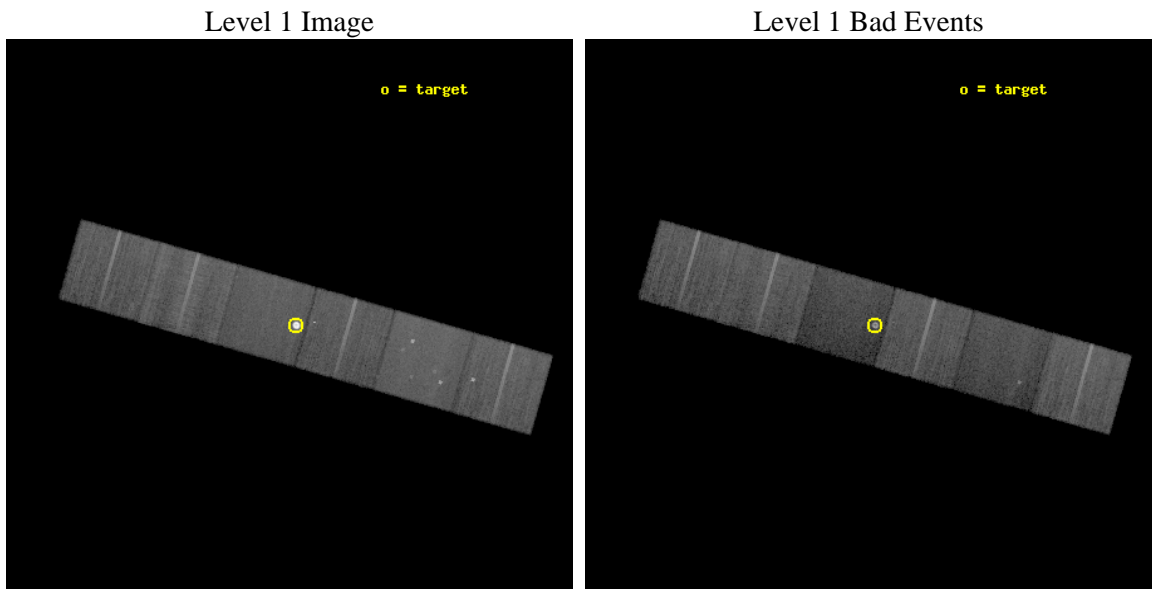
seq_num	590442	Sequence number
obs_id	6759	Observation id
title	AO7 ACIS-S Calibration Observations of E0102-72	Proposal title
observer	Dr. CXC Calibration	Principal investigator
object	E0102-72[S3,-120,-1,0,0]	Source name
dtcycle	0	
cycle	P	events from which exps? Prim/Second/Both
ra_targ	16.01	Observer's specified target RA [deg]
dec_targ	-72.032028	Observer's specified target Dec [deg]
ra_nom	16.047909311749	Nominal RA [deg]
dec_nom	-72.027025039429	Nominal Dec [deg]
roll_nom	195.90172827063	Nominal Roll [deg]
revision	2	Processing version of data
ontime	18140.79993242	Sum of GTIs [s]
livetime	17911.090200598	Livetime [s]
ontime4	18140.79993242	Sum of GTIs [s]
ontime5	18140.79993242	Sum of GTIs [s]
ontime6	18140.79993242	Sum of GTIs [s]
ontime7	18140.79993242	Sum of GTIs [s]
ontime8	18140.79993242	Sum of GTIs [s]
ontime9	18140.79993242	Sum of GTIs [s]
l2events	297378	Number of level 2 events



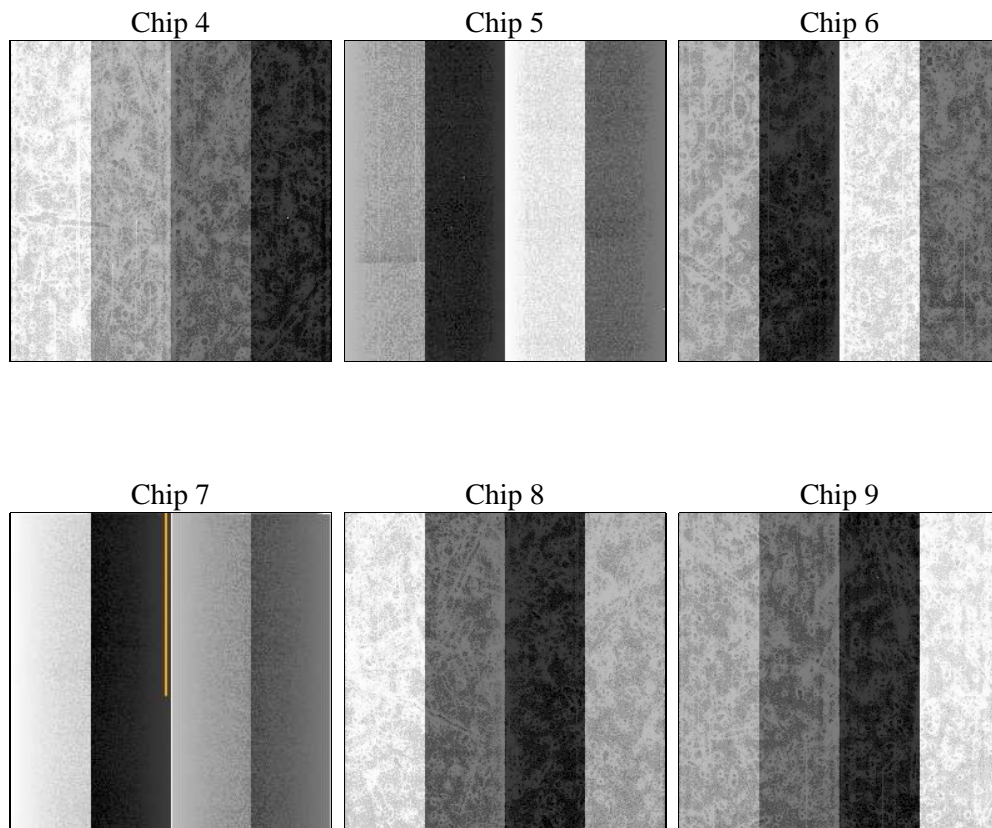
2 OBI

2.1 OBI

2.1.1 Images



2.1.2 Bias



2.1.3 Parameters

obi_num	1	Obi number	sched_exp_time	18000.000000	[s] Scheduled observation exposure time
ascdsver	8.4.3.1	Processing system revision	ontime	18140.79993242	Sum of GTIs [s]
caldsver	4.4.8	 	ontime4	18140.79993242	Sum of GTIs [s]
date	2012-03-28T21:29:16	Date and time of file creation	ontime5	18140.79993242	Sum of GTIs [s]
revision	2	Processing version of data	ontime6	18140.79993242	Sum of GTIs [s]
			ontime7	18140.79993242	Sum of GTIs [s]
			ontime8	18140.79993242	Sum of GTIs [s]
			ontime9	18140.79993242	Sum of GTIs [s]
			l1events	946014	Number of level 1 events

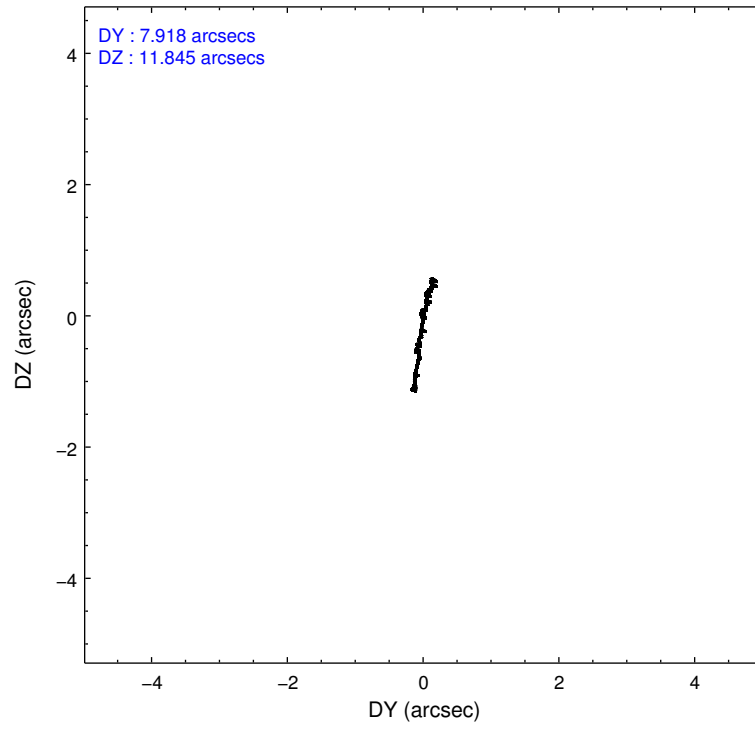
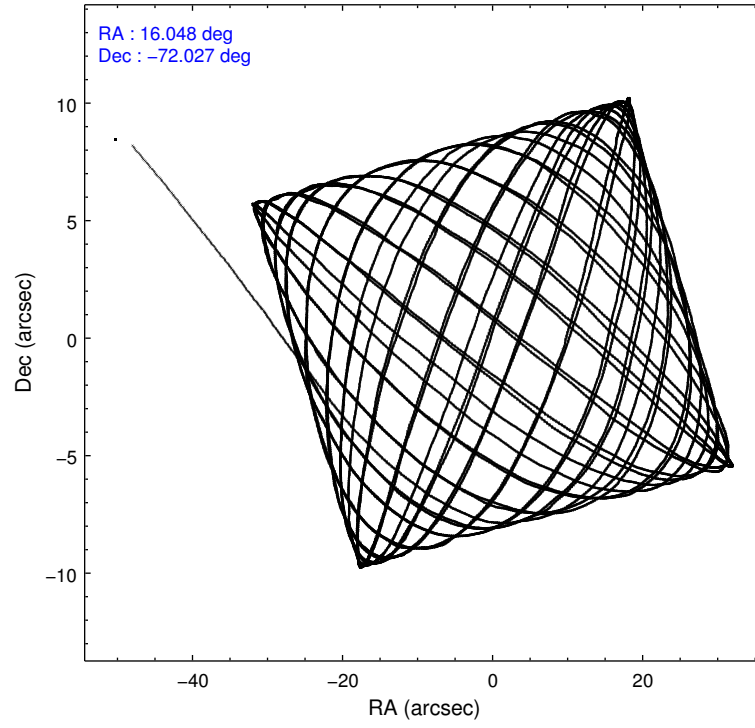
2.1.4 Events

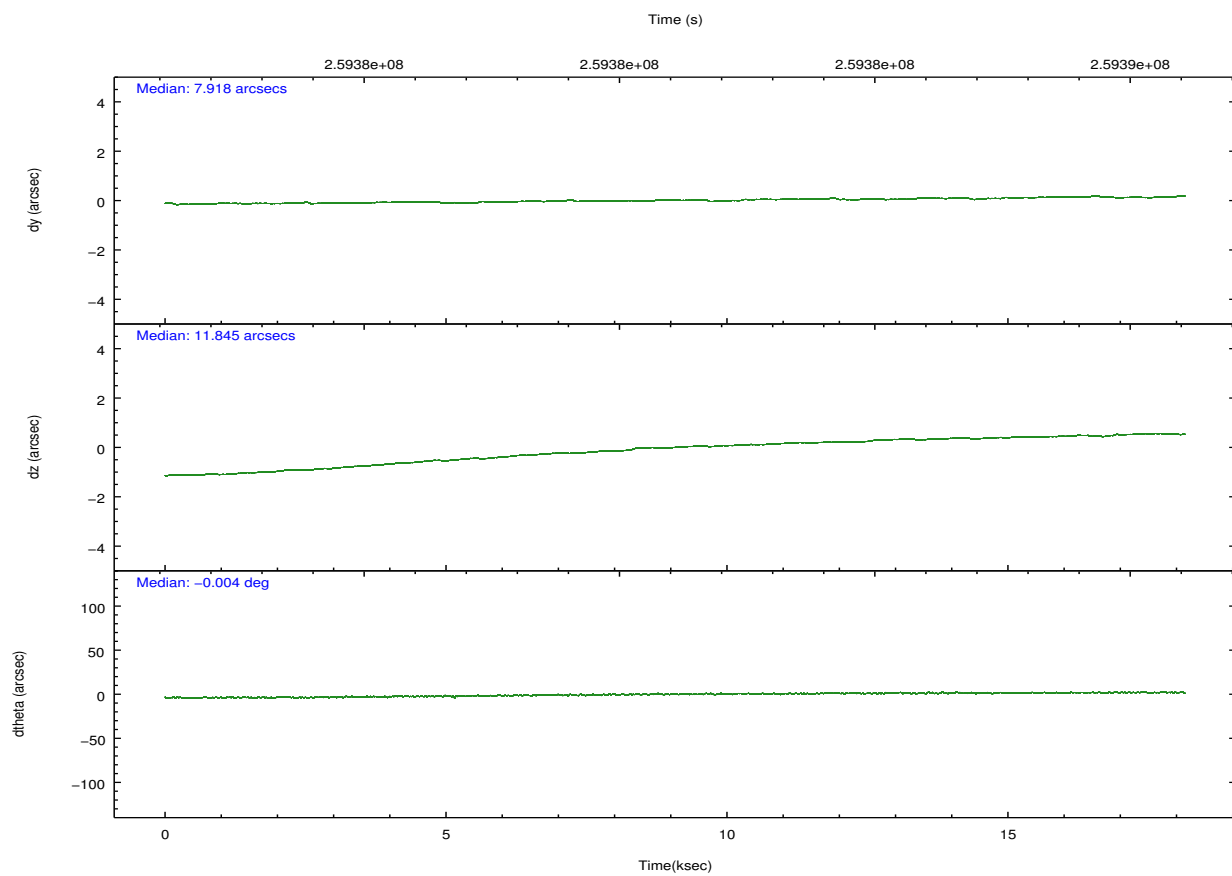
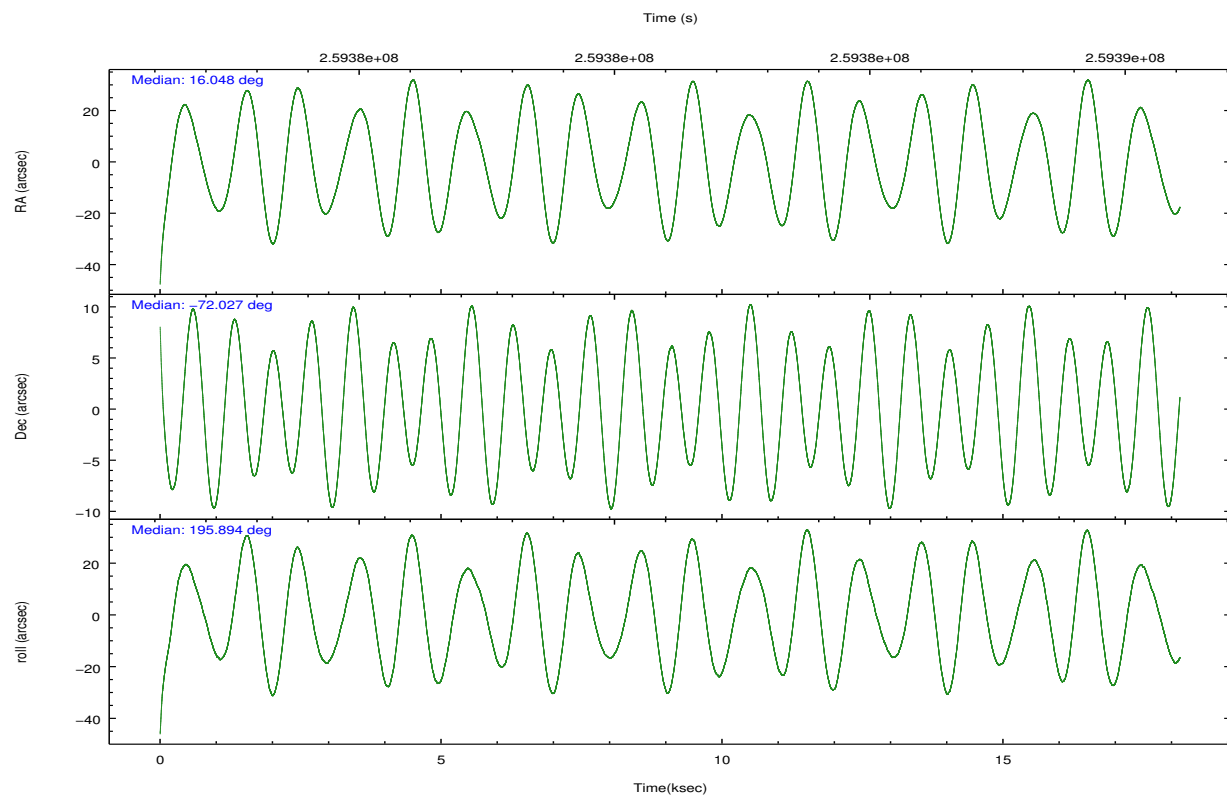
	ccd 4	ccd 5	ccd 6	ccd 7	ccd 8	ccd 9		ccd 4	ccd 5	ccd 6	ccd 7	ccd 8	ccd 9
level 1 events	147080	154562	126112	243210	152092	122958	grade 0 events	8216	9289	6452	42343	9849	4343
rejected events	130831	72197	111144	64855	115814	110645		5%	6%	5%	17%	6%	3%
rejected %	88%	46%	88%	26%	76%	89%	grade 1 events	149	145	112	835	122	89
								0%	0%	0%	0%	0%	0%
							grade 2 events	3178	25429	3091	46866	8732	2661
								2%	16%	2%	19%	5%	2%
							grade 3 events	1478	3826	1488	20800	4120	1462
								1%	2%	1%	8%	2%	1%
							grade 4 events	1408	3587	1425	19699	3705	1362
								0%	2%	1%	8%	2%	1%
							grade 5 events	4154	12763	4151	14819	6325	4703
								2%	8%	3%	6%	4%	3%
							grade 6 events	2076	40809	2608	49859	10129	2576
								1%	26%	2%	20%	6%	2%
							grade 7 events	126421	58714	106785	47989	109110	105762
								85%	37%	84%	19%	71%	86%

2.2 Compared Parameters

Parameter	Planned	Actual	Parameter	Planned	Actual
Instrument	ACIS	ACIS	Obspar format version number	7	7
Detector	ACIS-456789	ACIS-456789	Obspar file type	PREDICTED	ACTUAL
Grating	NONE	NONE	Obspar update status	NONE	UPDATED
Data mode	VFAINT	VFAINT	Number of optional ACIS chips dropped	0	0
Observation mode	POINTING	POINTING	On-chip summing requested	N	N
[deg] Pointing RA	16.108467	16.04790931174895	Subarray requested	NONE	NONE
[deg] Pointing Dec	-72.007170	-72.02702503942861	Alternating exposures requested	N	N
[deg] Pointing Roll	195.802696	195.9017282706274	[s] Primary exposure time	0.000000	3.2
[s] Window start time (MET)	247190464.184000	247190464.184000			
[s] Window stop time (MET)	260150465.184000	260150465.184000			
[mm] SIM focus pos	-0.684267	-0.6828225247311905			
[mm] SIM defocus	0	0.001444936568705701			
[mm] SIM translation stage pos	-190.132523	-190.1400660498719			
[mm] SIM translation stage offset	0	0.00754346686406393			
[s] Observation start time (MET)	259372166.184000	259371054.33675			
Observation start date	2006-03-21T23:48:21	2006-03-21T23:30:54			
[s] Observation end time (MET)	259390166.184000	259390834.78767			
Observation end date	2006-03-22T04:48:21	2006-03-22T05:00:34			
Read mode	TIMED	TIMED			

2.3 Aspect



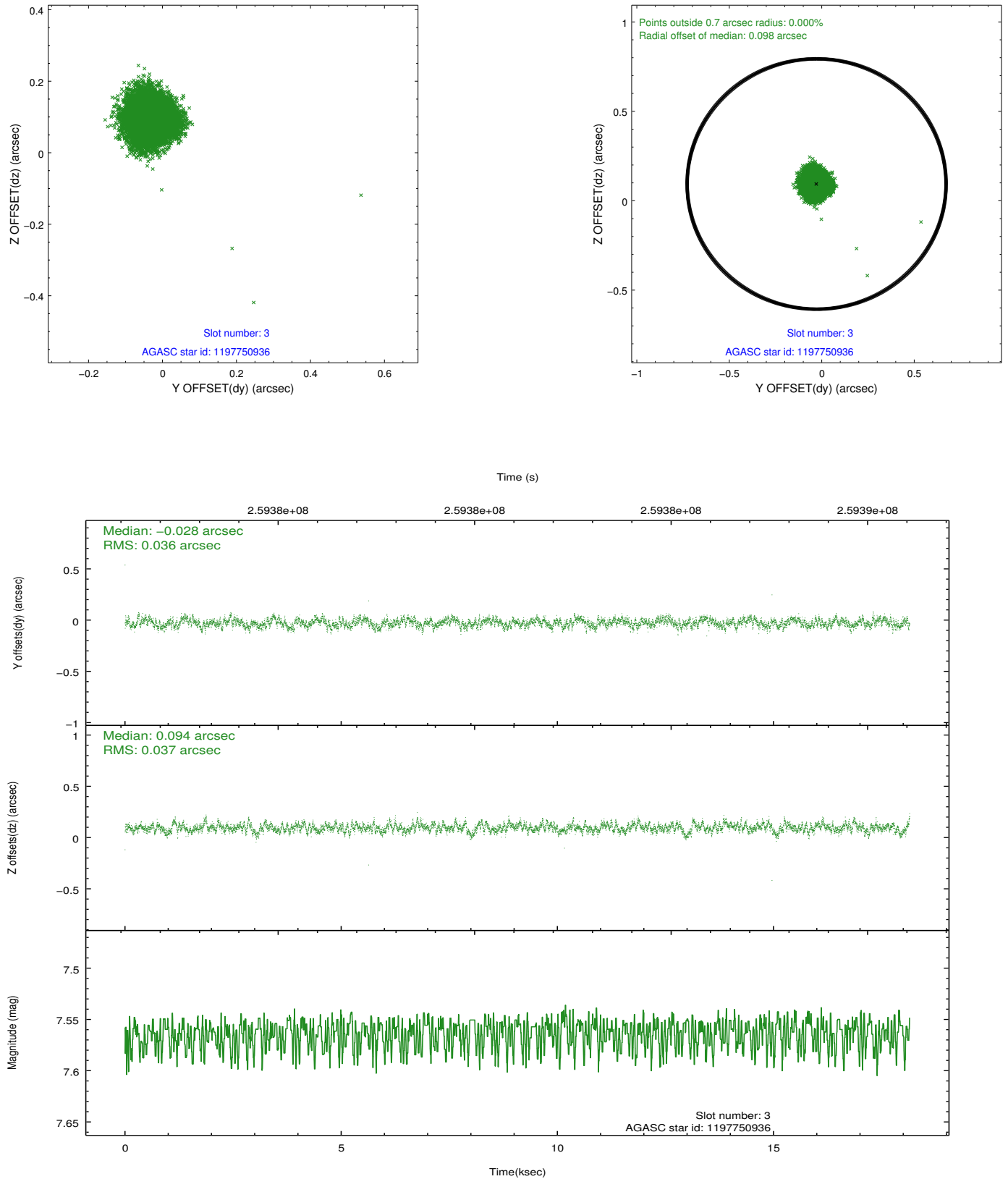


Slot Statistics

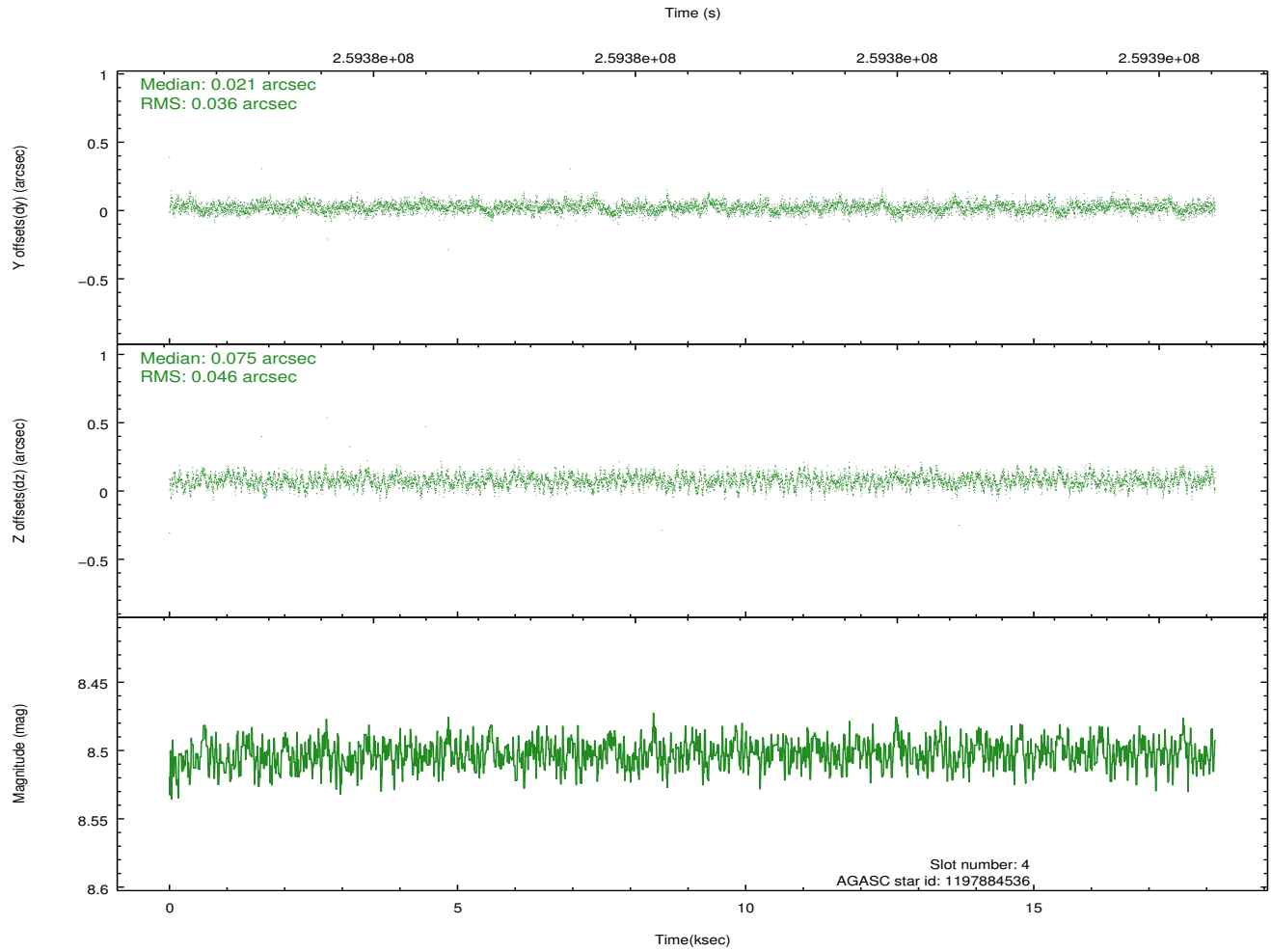
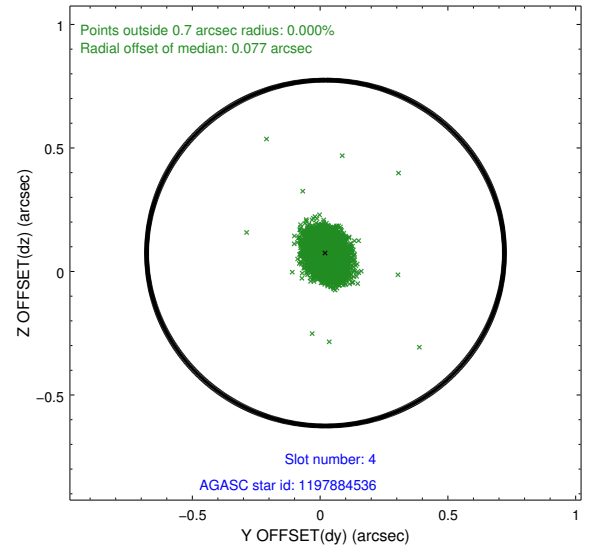
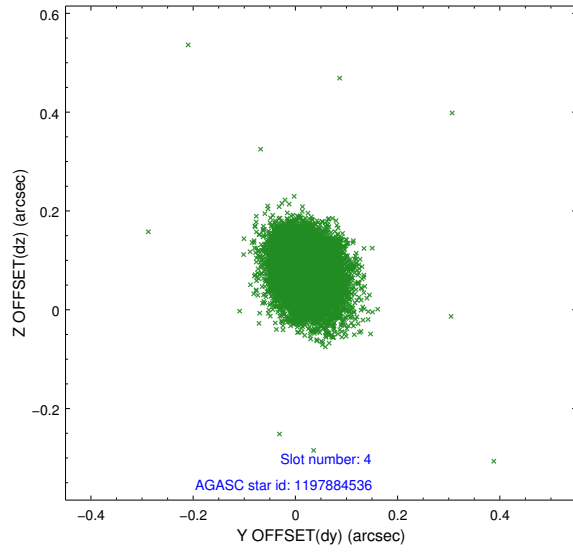
slot	status	id	mag	n_pts	med_dy	med_dz	dr1	dr2	ra	dec	mean_y	mean_z
0	FID	ACIS-S-2	7.10	4426	-0.023	-0.029	0.017	0.026	0.000000	0.000000	-760.71	-1733.03
1	FID	ACIS-S-4	7.20	4426	0.112	0.019	0.009	0.016	0.000000	0.000000	2152.59	175.30
2	FID	ACIS-S-5	7.23	4426	-0.118	0.019	0.016	0.024	0.000000	0.000000	-1813.37	169.19
3	GUIDE	1197750936	7.56	8854	-0.028	0.094	0.054	0.085	15.387940	-71.549550	343.04	-1803.42
4	GUIDE	1197884536	8.50	8851	0.021	0.075	0.060	0.100	17.160729	-71.835289	-1301.65	-264.03
5	GUIDE	1197885104	9.35	8844	0.101	-0.010	0.089	0.146	17.845067	-72.189368	-1653.25	1178.57
6	GUIDE	1197885328	7.24	8853	0.106	0.027	0.054	0.083	16.283090	-71.733943	-457.82	-892.35
7	GUIDE	1198189696	7.36	8852	-0.200	-0.192	0.064	0.100	15.223750	-72.697522	1589.78	2140.33

2.4 Star Slots

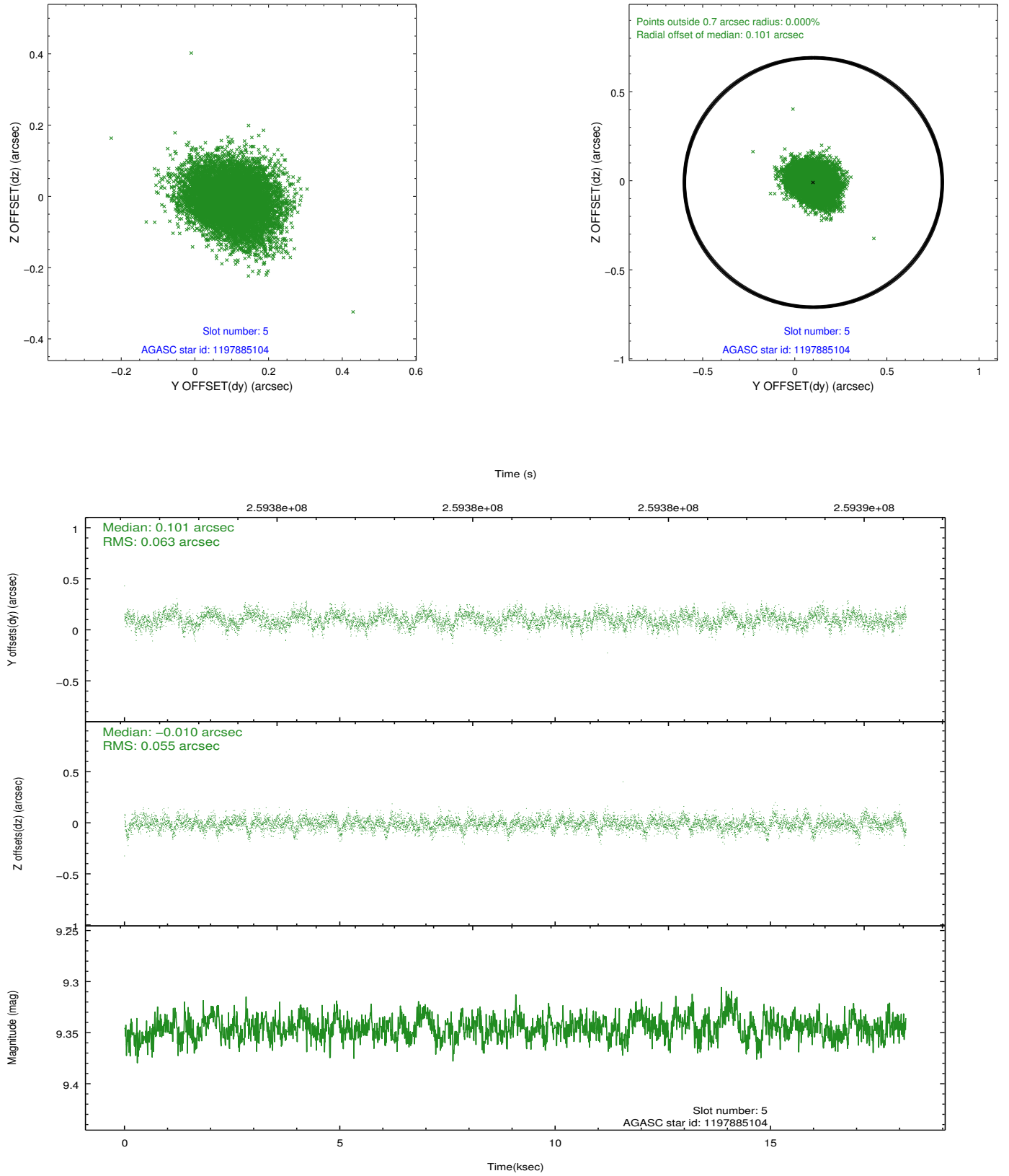
2.4.1 Slot 3



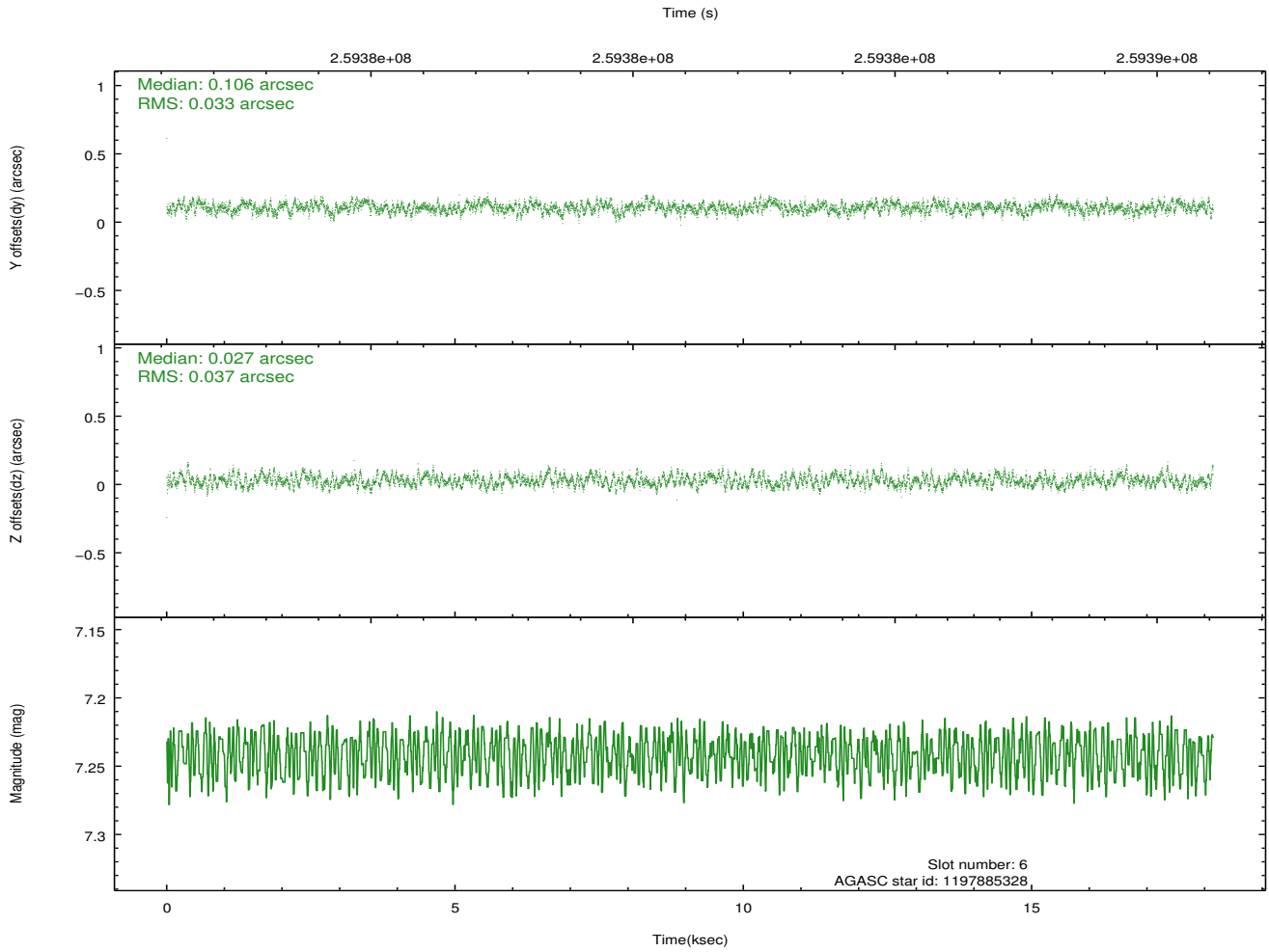
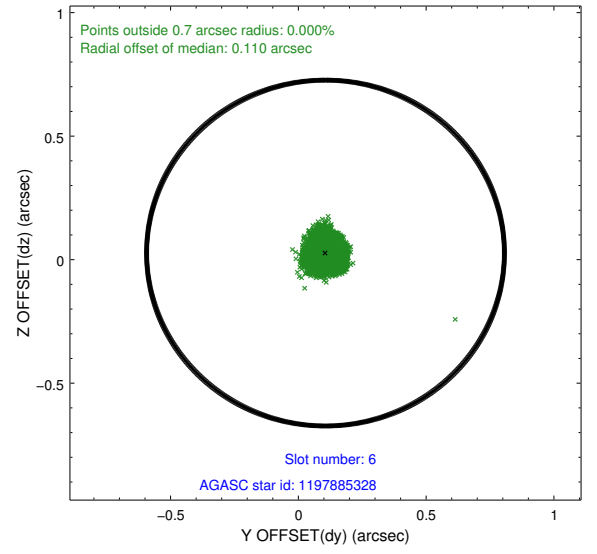
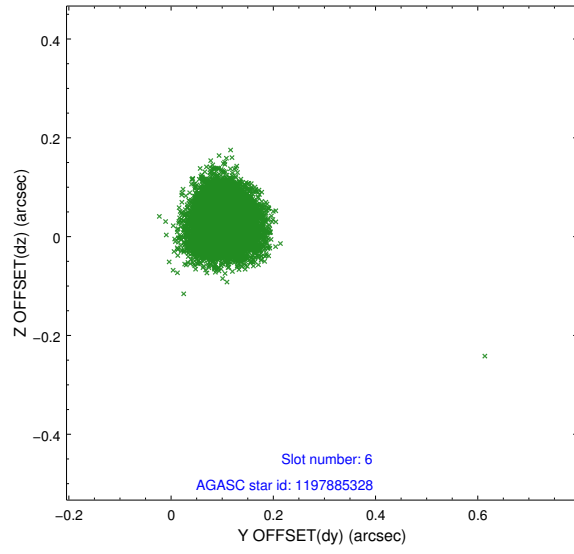
2.4.2 Slot 4



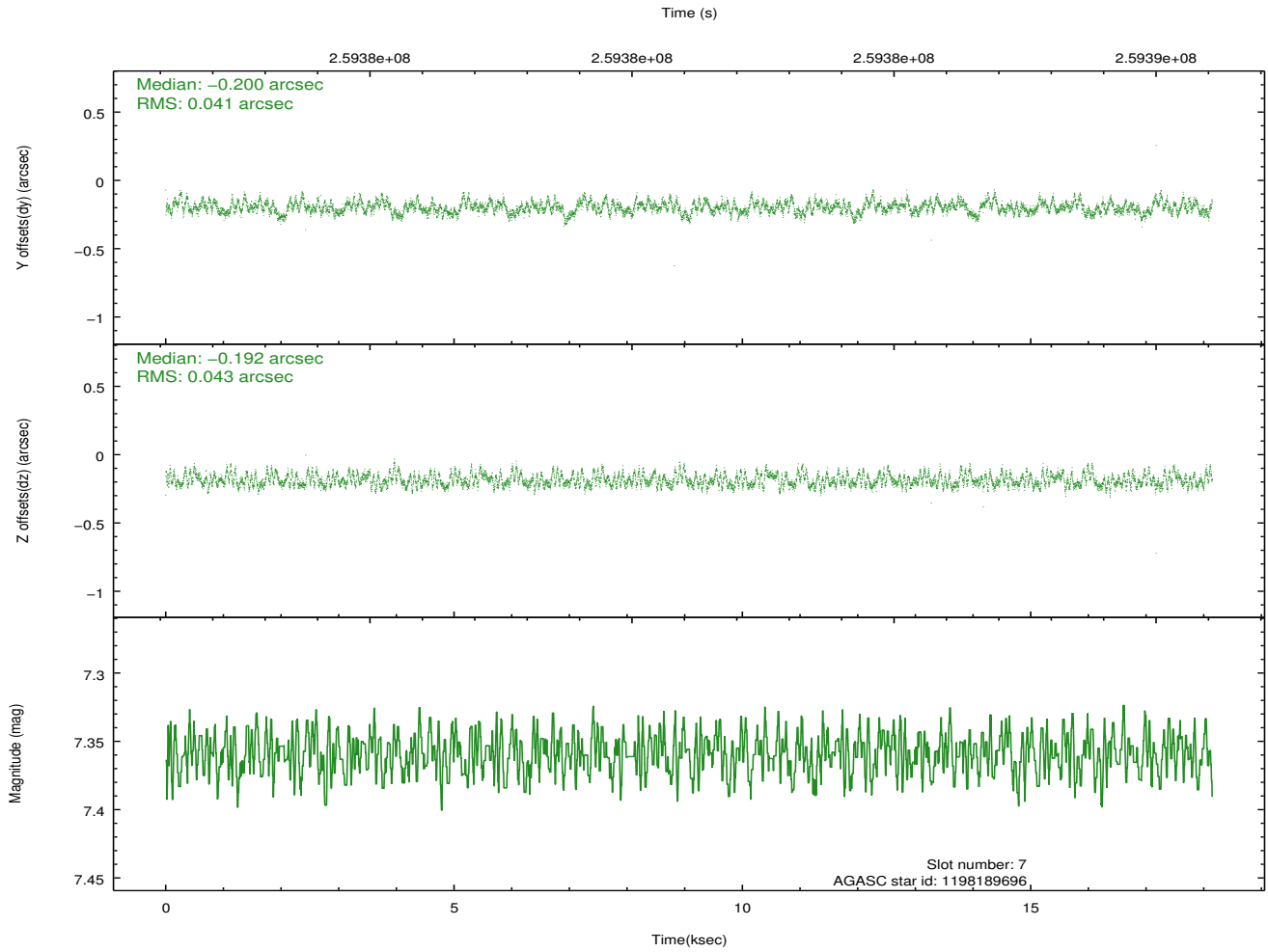
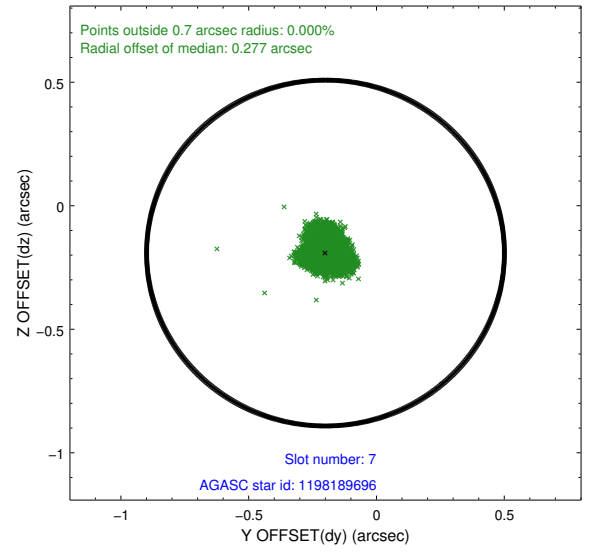
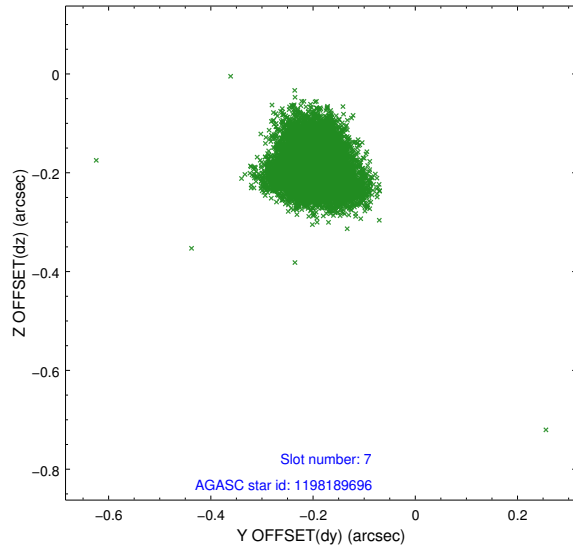
2.4.3 Slot 5



2.4.4 Slot 6

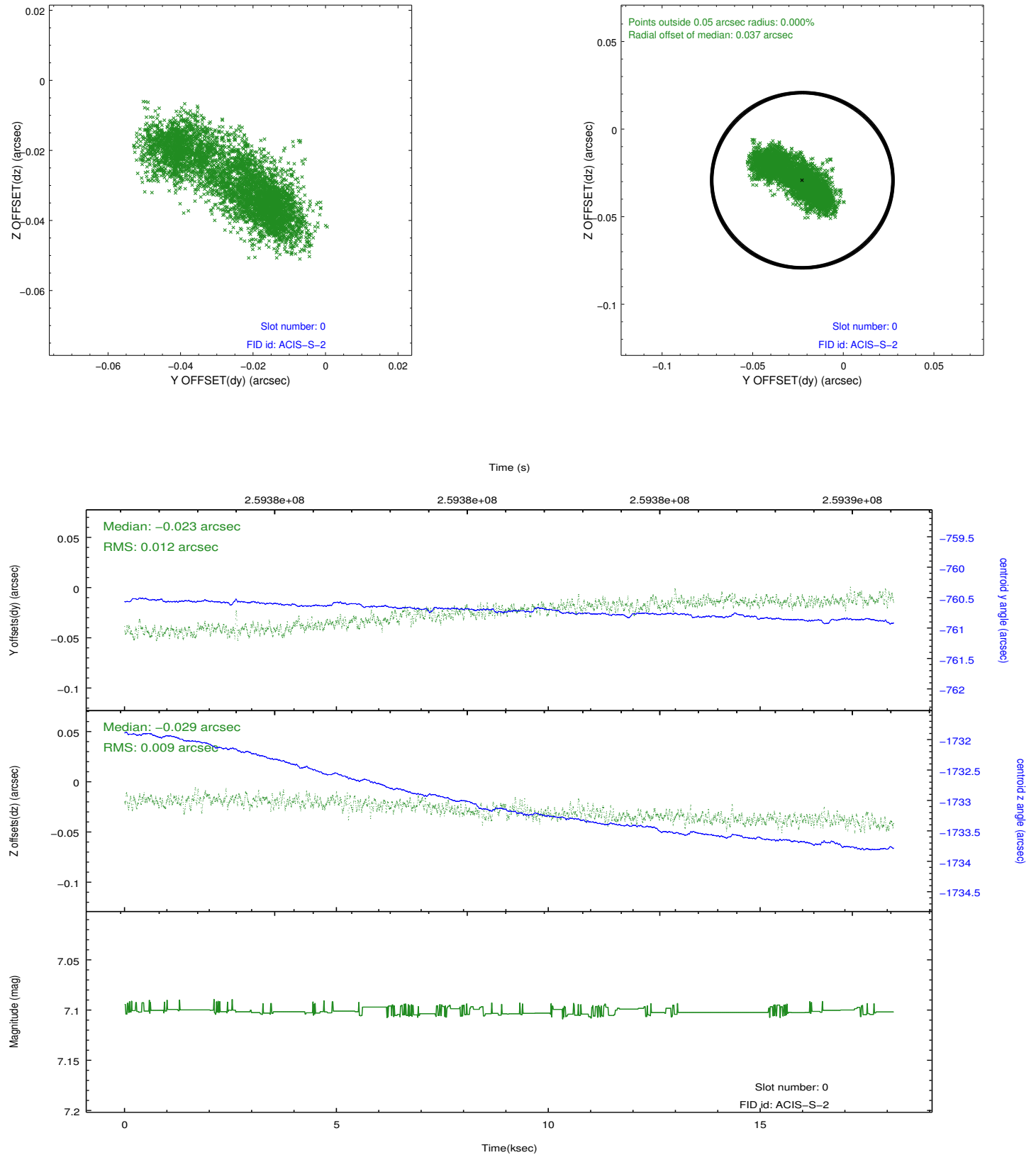


2.4.5 Slot 7

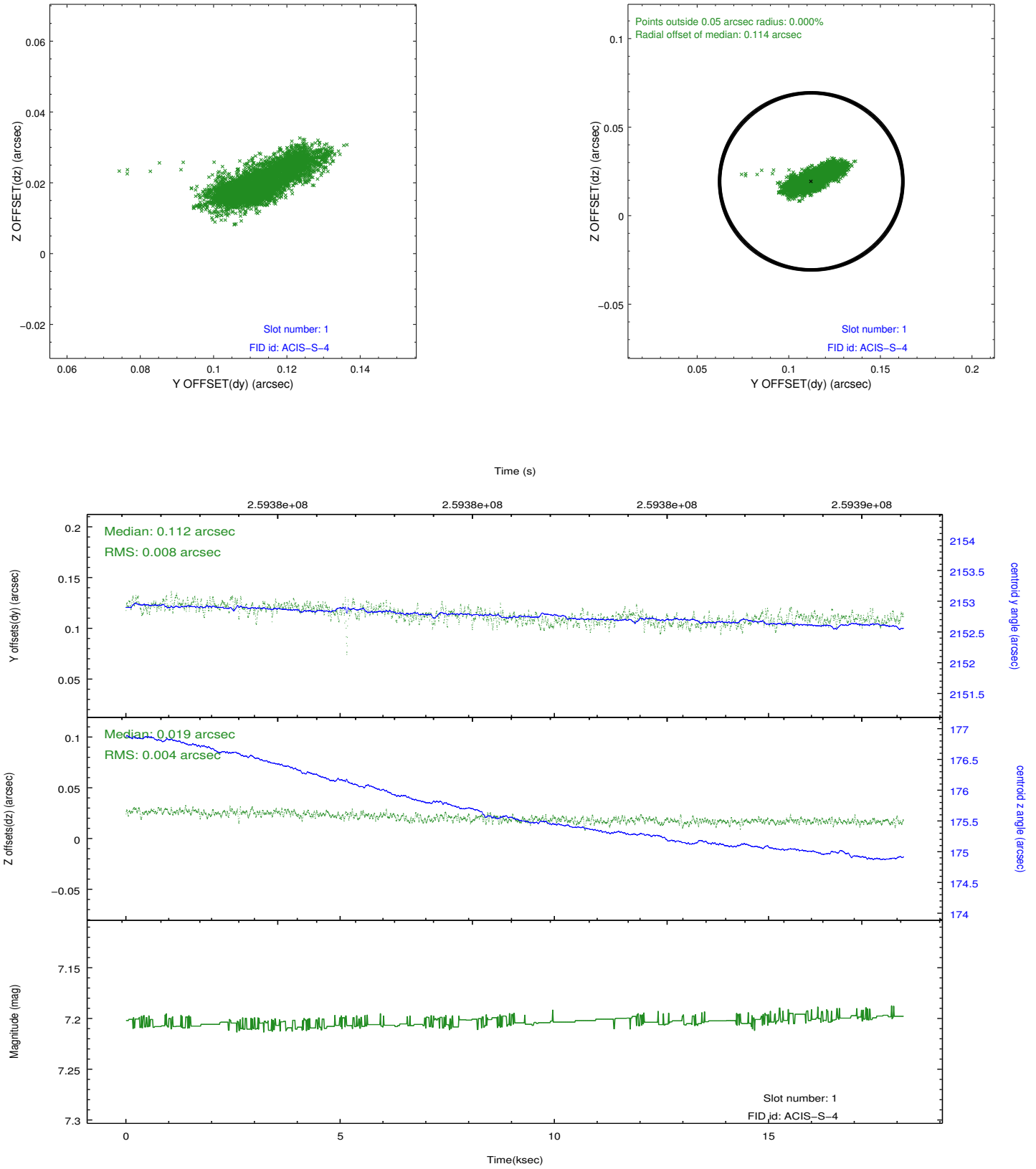


2.5 FID Slots

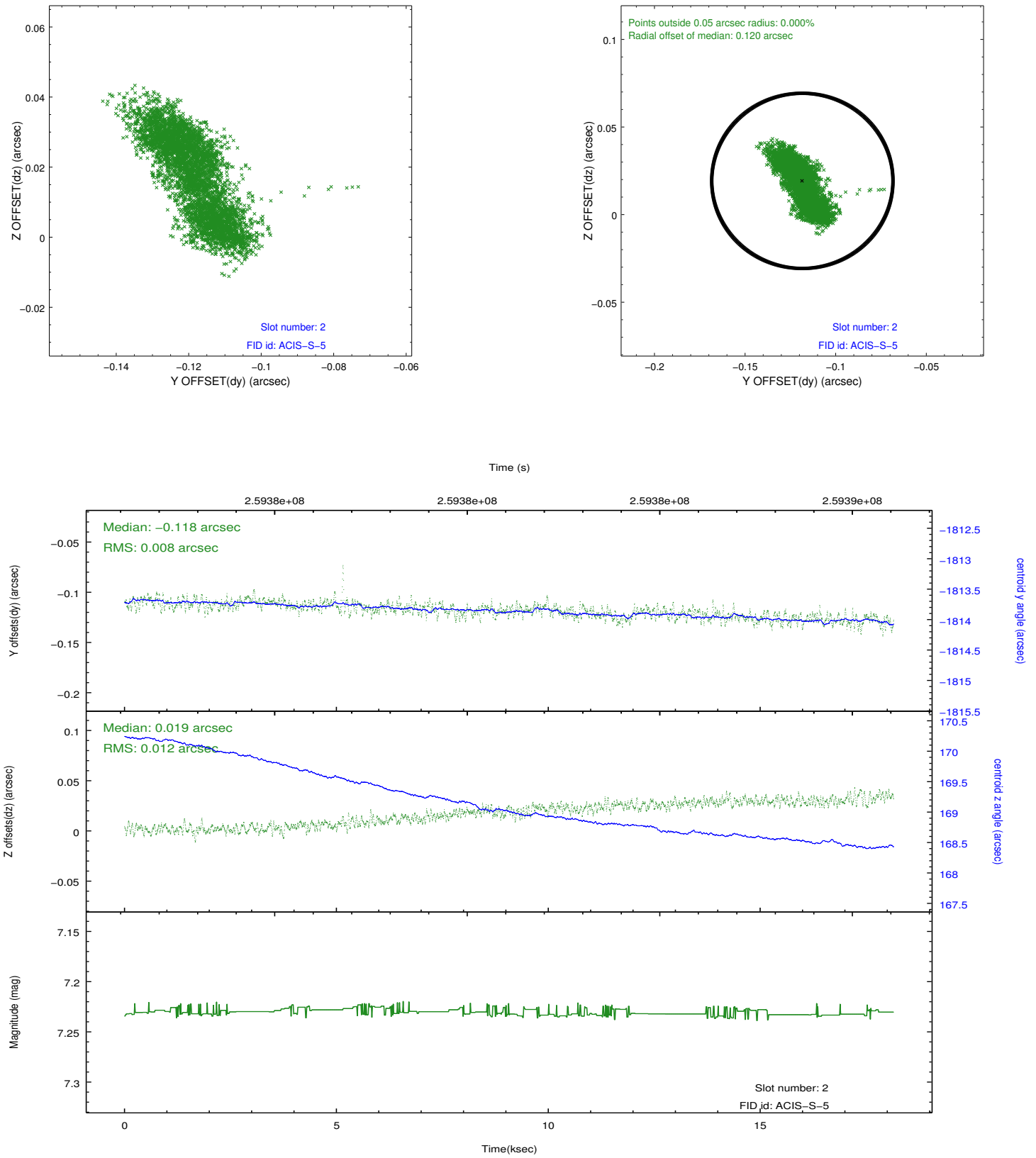
2.5.1 Slot 0



2.5.2 Slot 1



2.5.3 Slot 2



A Summary

A.1 Status

V&V Scientist	Beth Sundheim
V&V Date (YYYY-MM-DD)	2012.03.30
V&V Edition	1
V&V Disposition and Status	OK
V&V Charge Time	18.1407999

A.2 Comments

Window preference met.