

# V&V Reference Report

## L2 ASCDS Version : 7.6.7.1

Observation 6349 - L2 Version 002  
Chandra X-Ray Center

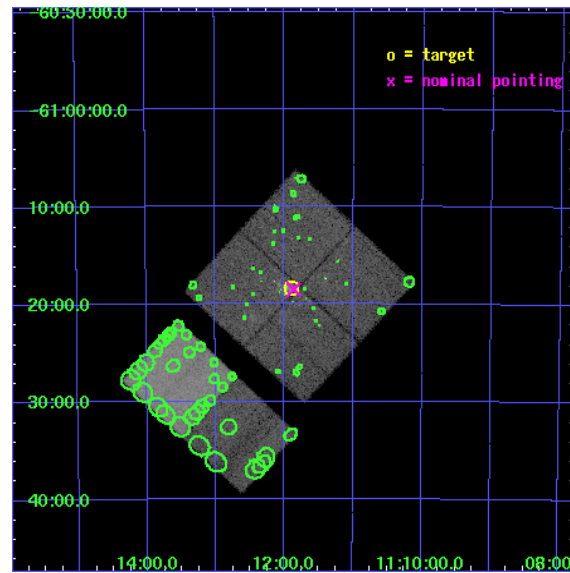
L2 Processing Date : Mar 15 2006

## Contents

<b>1</b>	<b>Front</b>	<b>2</b>
<b>2</b>	<b>OBI</b>	<b>3</b>
2.1	OBI . . . . .	3
2.1.1	Images . . . . .	3
2.1.2	Bias . . . . .	3
2.1.3	Parameters . . . . .	4
2.1.4	Events . . . . .	4
2.2	Compared Parameters . . . . .	5
2.3	Aspect . . . . .	6
2.4	Star Slots . . . . .	9
2.4.1	Slot 3 . . . . .	9
2.4.2	Slot 4 . . . . .	10
2.4.3	Slot 5 . . . . .	11
2.4.4	Slot 6 . . . . .	12
2.4.5	Slot 7 . . . . .	13
2.5	FID Slots . . . . .	14
2.5.1	Slot 0 . . . . .	14
2.5.2	Slot 1 . . . . .	15
2.5.3	Slot 2 . . . . .	16
<b>3</b>	<b>Point Sources</b>	<b>17</b>
<b>A</b>	<b>Summary</b>	<b>18</b>
A.1	Status . . . . .	18
A.2	Comments . . . . .	18

# 1 Front

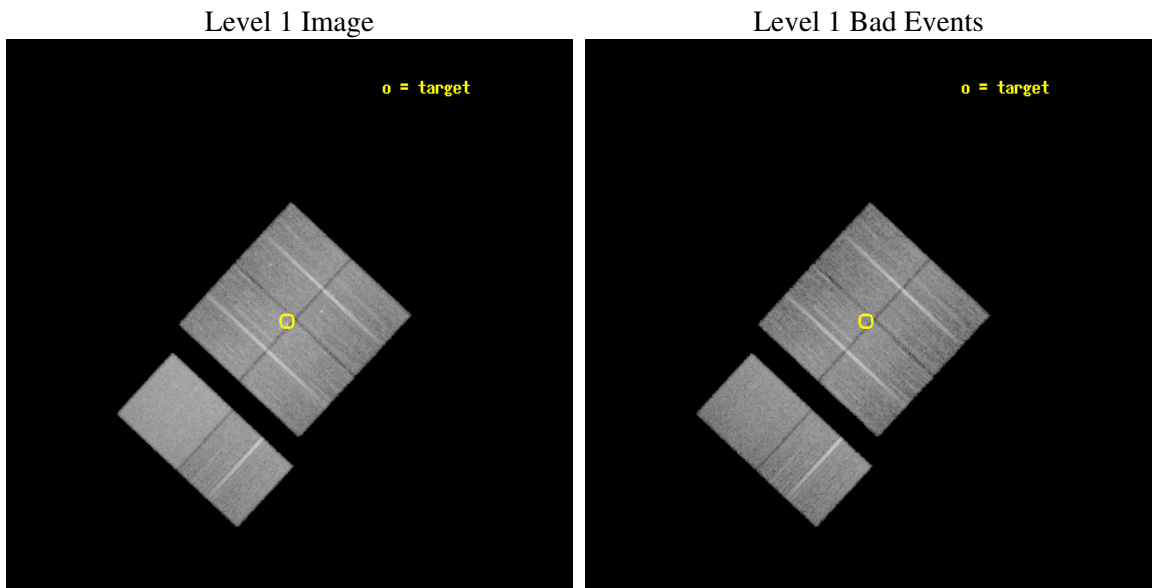
seq_num	200265
obs_id	6349
title	X-ray Flows from the Giant HII Region NGC 3576
observer	Dr. Leisa Townsley
object	NGC 3576
dtcycle	0
cycle	P
ra_targ	167.974167
dec_targ	-61.306944
ra_nom	167.965146
dec_nom	-61.308514
roll_nom	222.900758
revision	2
ontime	21123.19992131
livetime	20855.725245042
ontime0	21123.19992131
ontime1	21123.19992131
ontime2	21116.717980742
ontime3	21123.19992131
ontime6	21119.958951026
ontime7	21123.19992131
l2events	222811



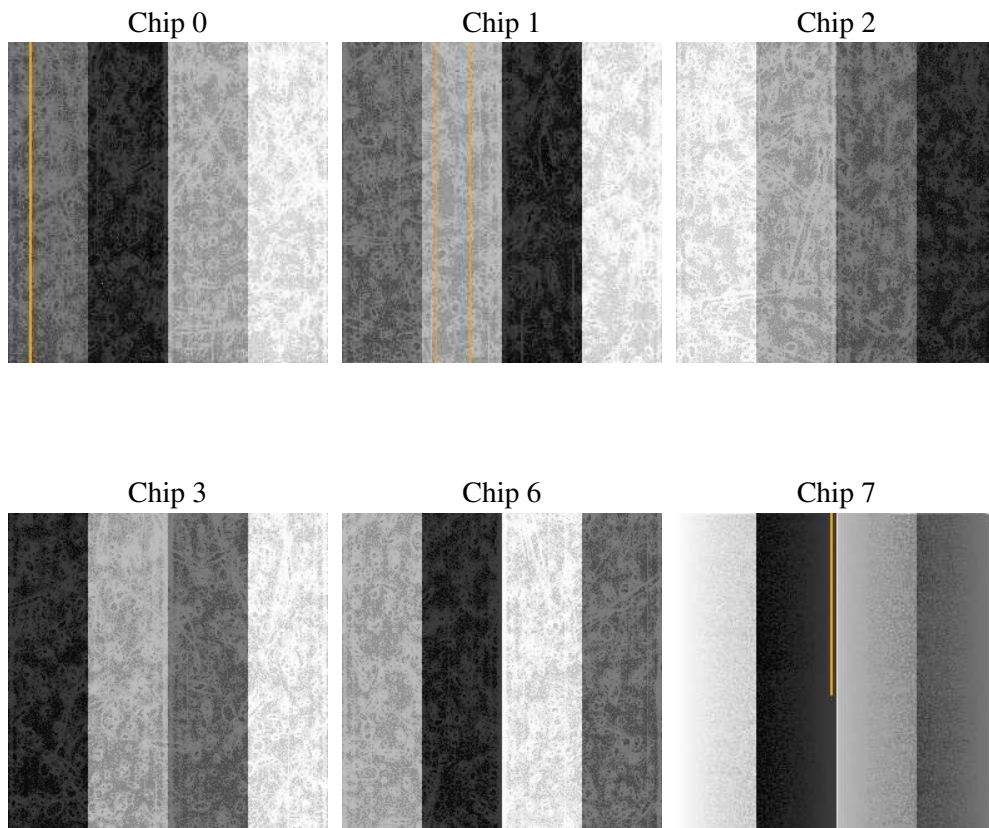
## 2 OBI

### 2.1 OBI

#### 2.1.1 Images



#### 2.1.2 Bias



### 2.1.3 Parameters

obi_num	0
ascdsver	7.6.7.1
caldsver	3.2.1
date	2006-03-15T17:12:26
revision	2

sched_exp_time	20949.496000
ontime	21128.105857372
ontime0	21128.105827481
ontime1	21128.105827481
ontime2	21121.623916805
ontime3	21128.105857372
ontime6	21124.864857197
ontime7	21128.105857372
l1events	1077968

### 2.1.4 Events

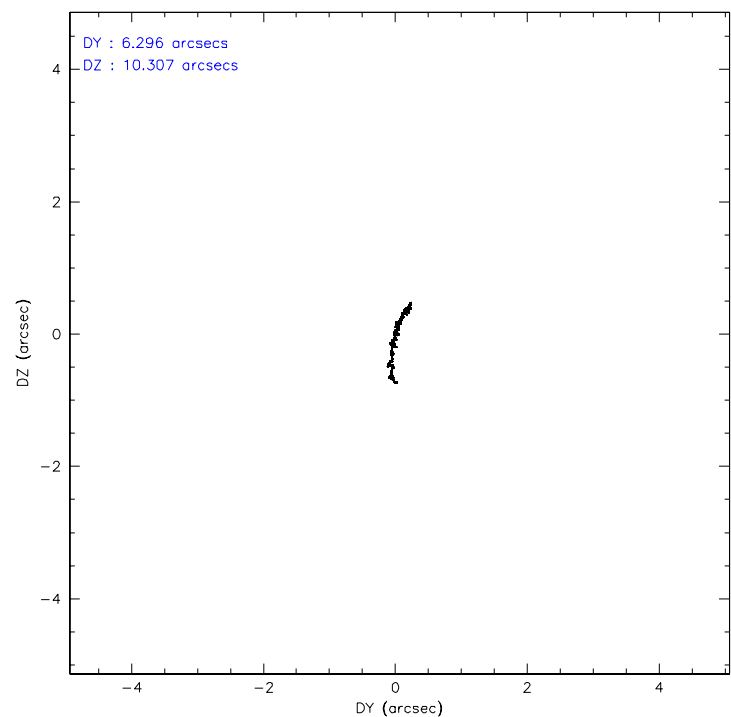
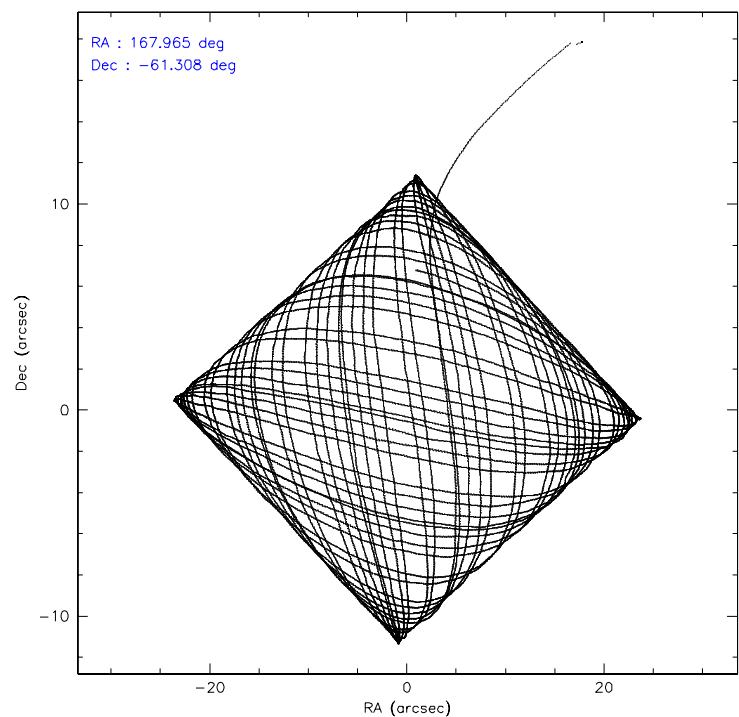
	ccd 0	ccd 1	ccd 2	ccd 3	ccd 6	ccd 7
level 1 events	158089	161895	172859	174638	175428	235059
rejected events	129138	130937	144490	144307	147831	140706
rejected %	81%	80%	83%	82%	84%	59%

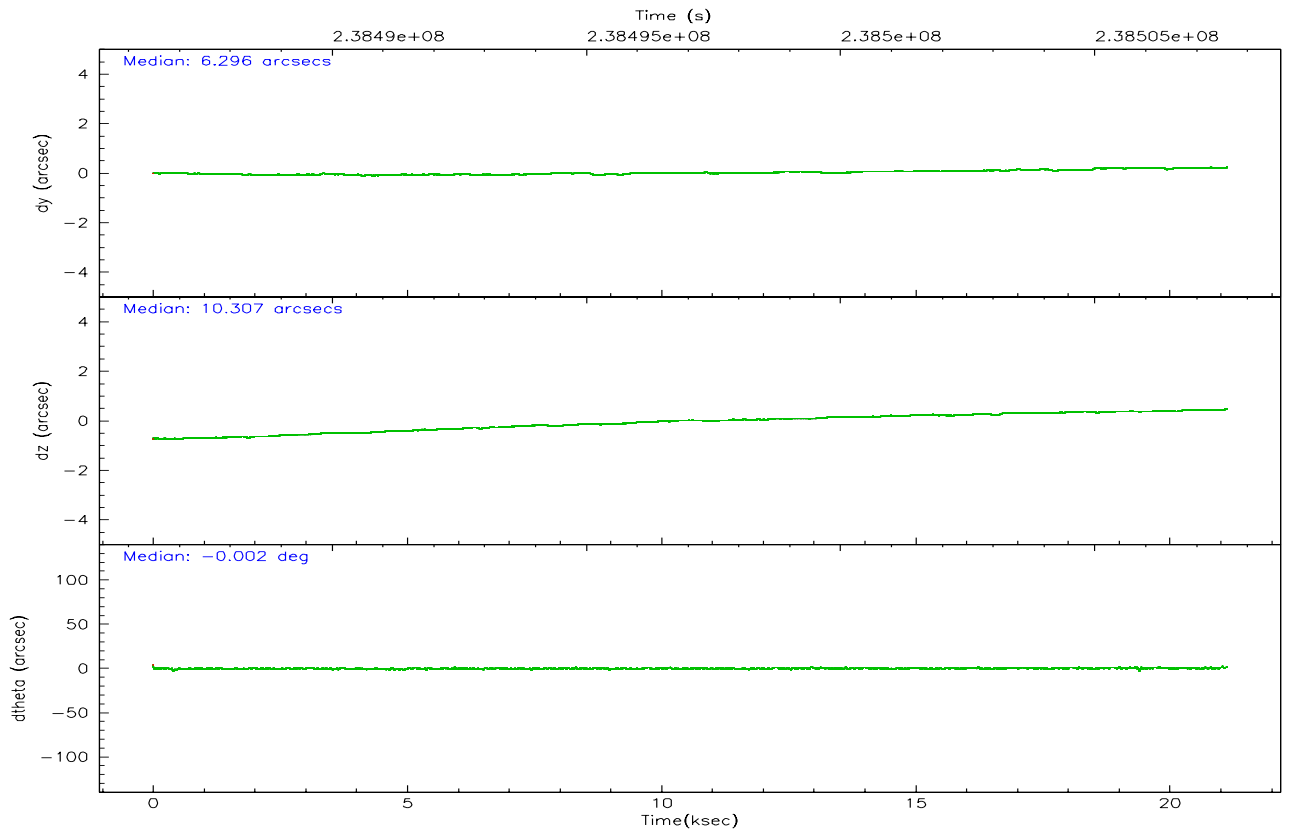
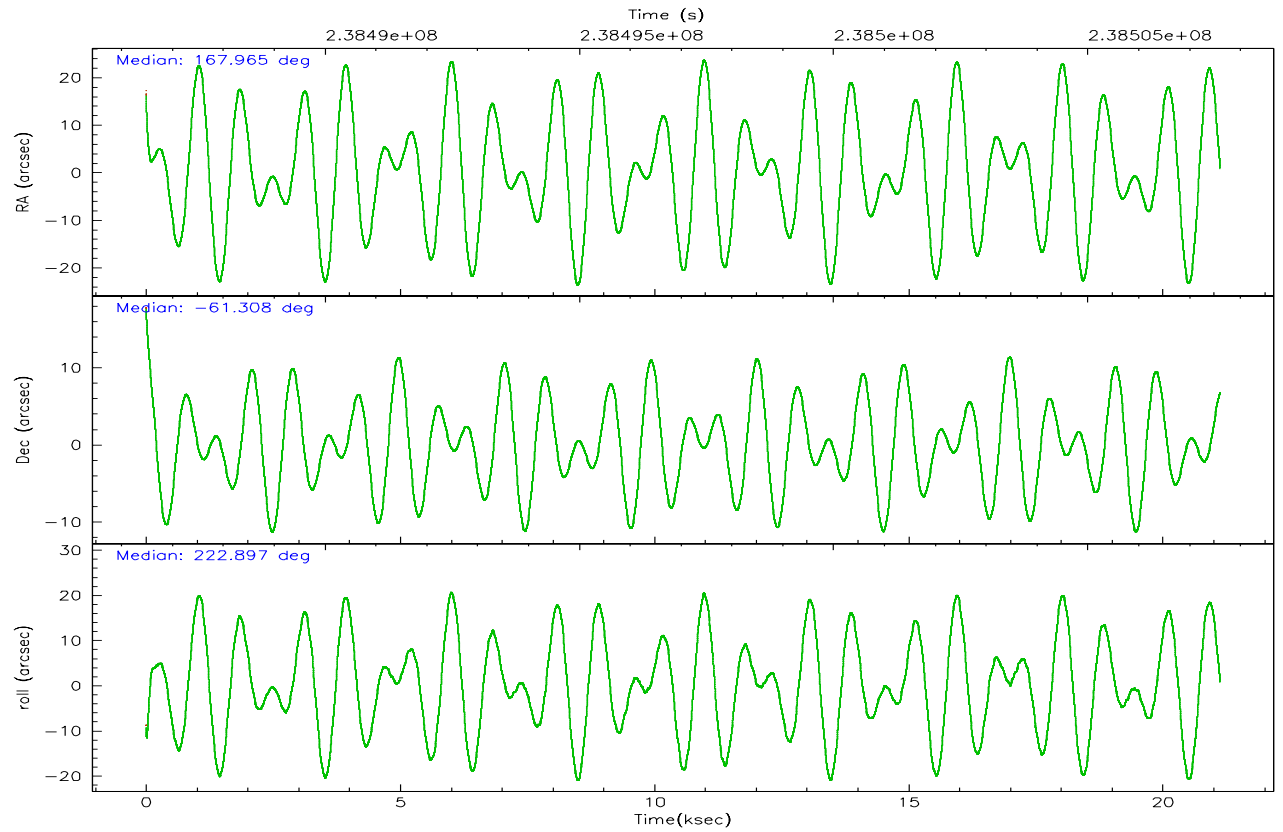
	ccd 0	ccd 1	ccd 2	ccd 3	ccd 6	ccd 7
grade 0 events	15155	15290	15352	16598	13366	5454
	9%	9%	8%	9%	7%	2%
grade 1 events	111	111	138	150	107	146
	0%	0%	0%	0%	0%	0%
grade 2 events	5331	6152	5067	5040	5200	23049
	3%	3%	2%	2%	2%	9%
grade 3 events	2226	2413	2078	2229	2144	4400
	1%	1%	1%	1%	1%	1%
grade 4 events	2116	2356	2142	2257	2166	4336
	1%	1%	1%	1%	1%	1%
grade 5 events	6795	7005	6503	7531	7881	14003
	4%	4%	3%	4%	4%	5%
grade 6 events	4130	4754	3739	4216	4728	57125
	2%	2%	2%	2%	2%	24%
grade 7 events	122225	123814	137840	136617	139836	126546
	77%	76%	79%	78%	79%	53%

## 2.2 Compared Parameters

Parameter	Planned	Actual	Parameter	Planned	Actual
Instrument	ACIS	ACIS	Obspar format version number	6	6
Detector	ACIS-012367	ACIS-012367	Obspar file type	PREDICTED	ACTUAL
Grating	NONE	NONE	Obspar update status	NONE	UPDATED
Data mode	VFAINT	VFAINT	On-chip summing requested	N	N
Observation mode	POINTING	POINTING	Subarray requested	NONE	NONE
Pointing RA	167.981626	167.9651464182877	Alternating exposures requested	N	N
Pointing Dec	-61.282329	-61.30851422577351	Primary exposure time	0.000000	3.2
Pointing Roll	222.706546	222.9007582908954			
SIM focus pos (mm)	-0.782348	-0.7809083437167272			
SIM defocus (mm)	0	0.001439871863259334			
SIM translation stage pos (mm)	-233.592463	-233.5874344608287			
SIM translation stage offset (mm)	0	-0.005018542100998502			
Observation start time	238486655.184000	238485587.25993			
Observation start date	2005-07-23T06:16:31	2005-07-23T05:59:47			
Observation end time	238507605.184000	238507836.42345			
Observation end date	2005-07-23T12:05:41	2005-07-23T12:10:36			
Read mode	TIMED	TIMED			

### 2.3 Aspect



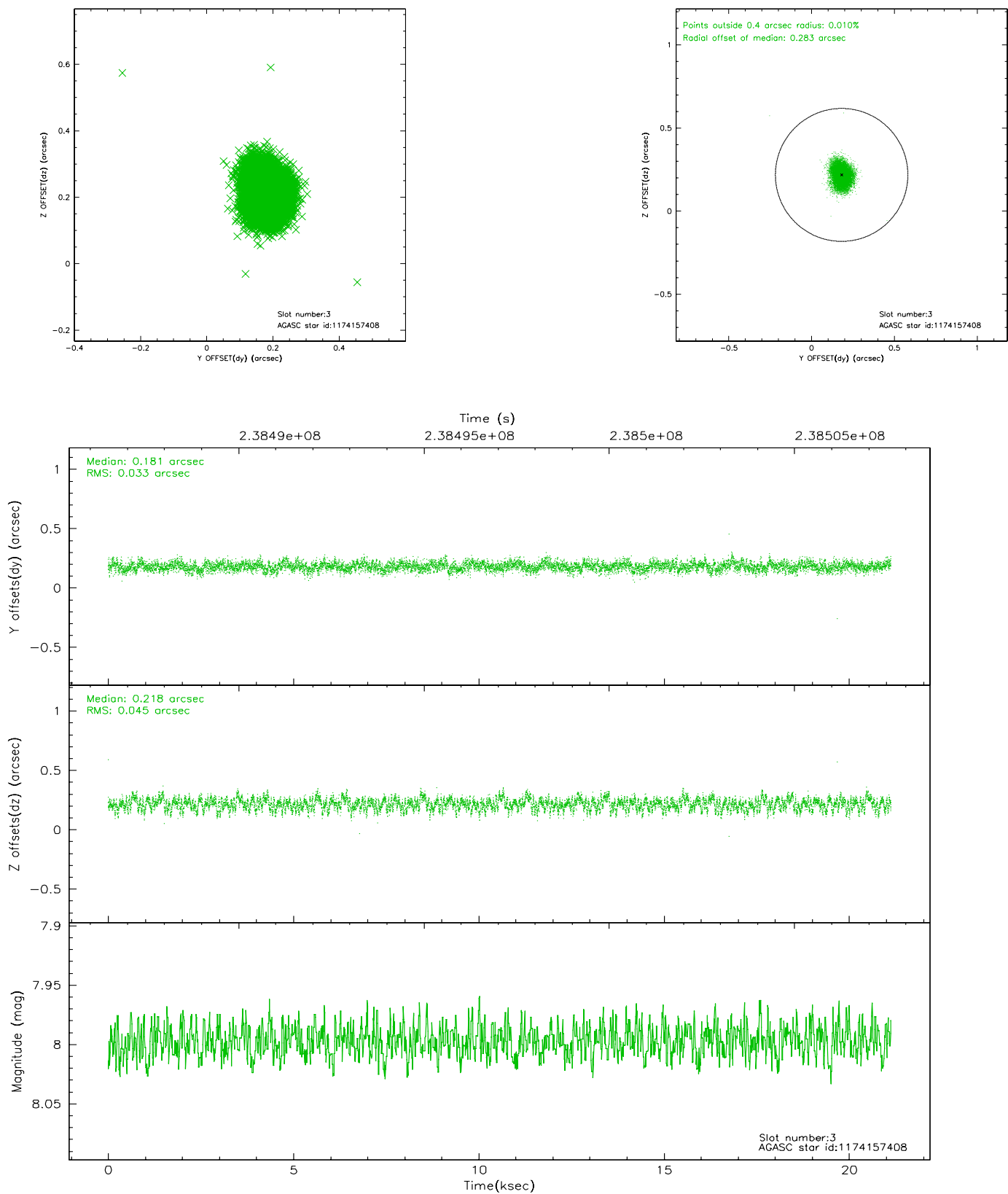


### Slot Statistics

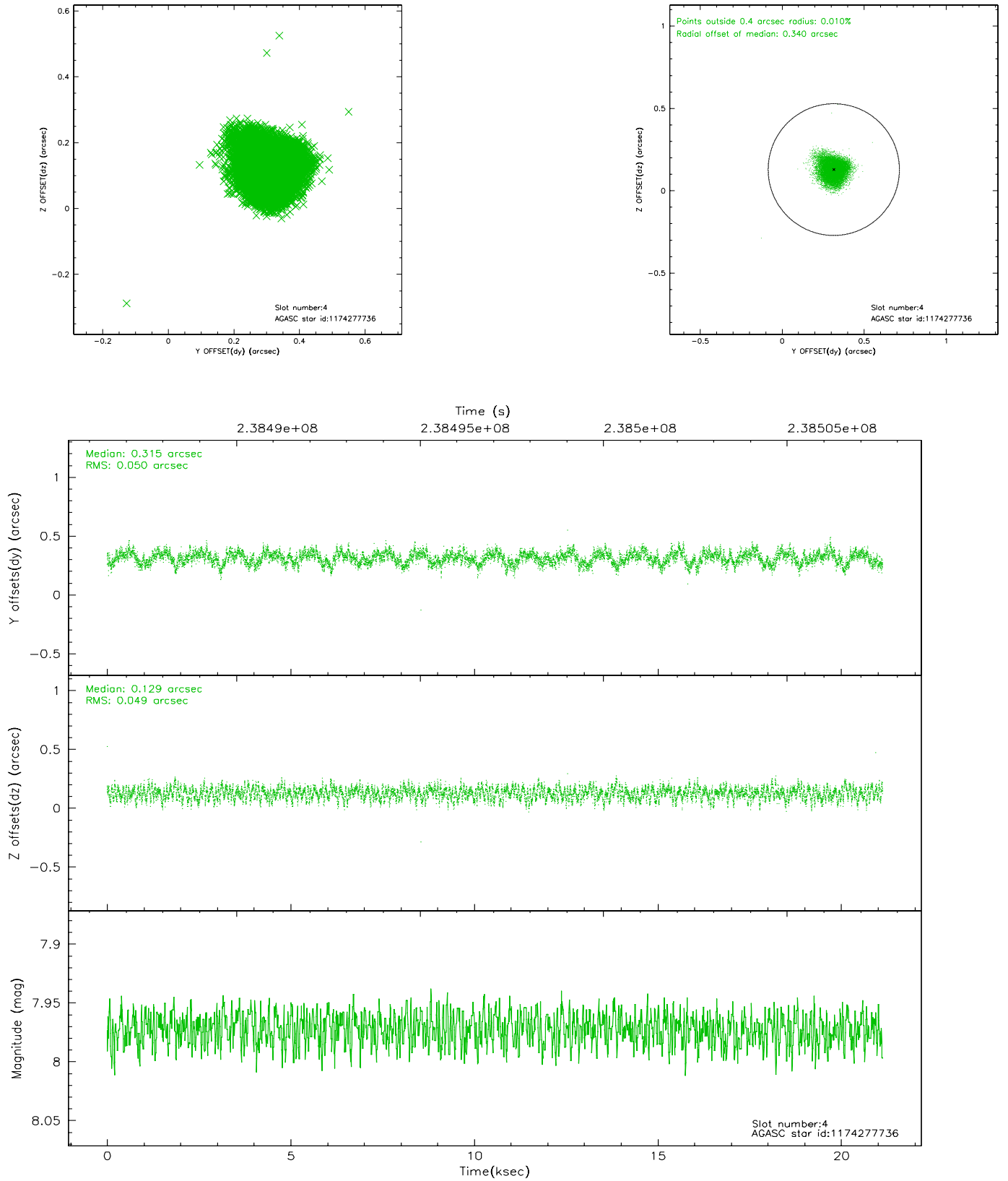
slot	status	id	mag	n_pts	med_dy	med_dz	dr1	dr2	ra	dec	mean_y	mean_z
0	FID	ACIS-I-1	7.25	5154	-0.014	0.013	0.026	0.042	0.000000	0.000000	933.36	-833.70
1	FID	ACIS-I-4	7.18	5154	0.062	0.021	0.018	0.030	0.000000	0.000000	2153.58	1066.03
2	FID	ACIS-I-5	7.22	5154	-0.147	0.037	0.012	0.019	0.000000	0.000000	-1814.55	1064.09
3	GUIDE	1174157408	8.00	10309	0.181	0.218	0.060	0.095	167.115550	-61.626529	1936.33	-86.70
4	GUIDE	1174277736	7.97	10308	0.315	0.129	0.075	0.117	167.205882	-61.559450	1660.12	-162.82
5	GUIDE	1174281840	8.17	10305	-0.145	-0.181	0.072	0.116	167.912903	-60.443364	-1958.37	-2302.46
6	GUIDE	1174282480	7.02	10308	-0.348	-0.010	0.048	0.078	168.099465	-60.378692	-2360.53	-2248.55
7	GUIDE	1174286632	8.71	10307	0.001	-0.153	0.067	0.108	169.069142	-61.673672	-399.11	2306.23

## 2.4 Star Slots

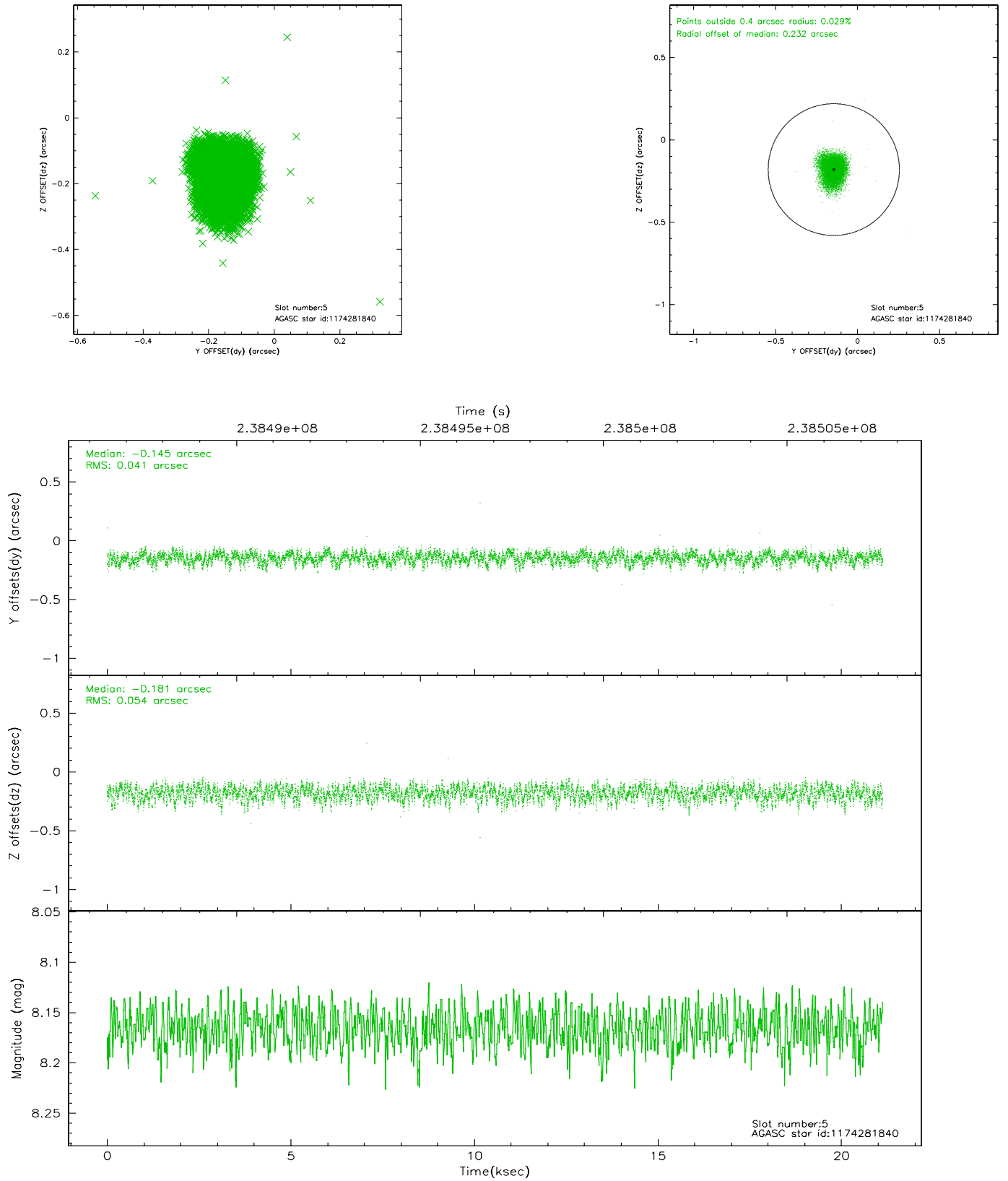
### 2.4.1 Slot 3



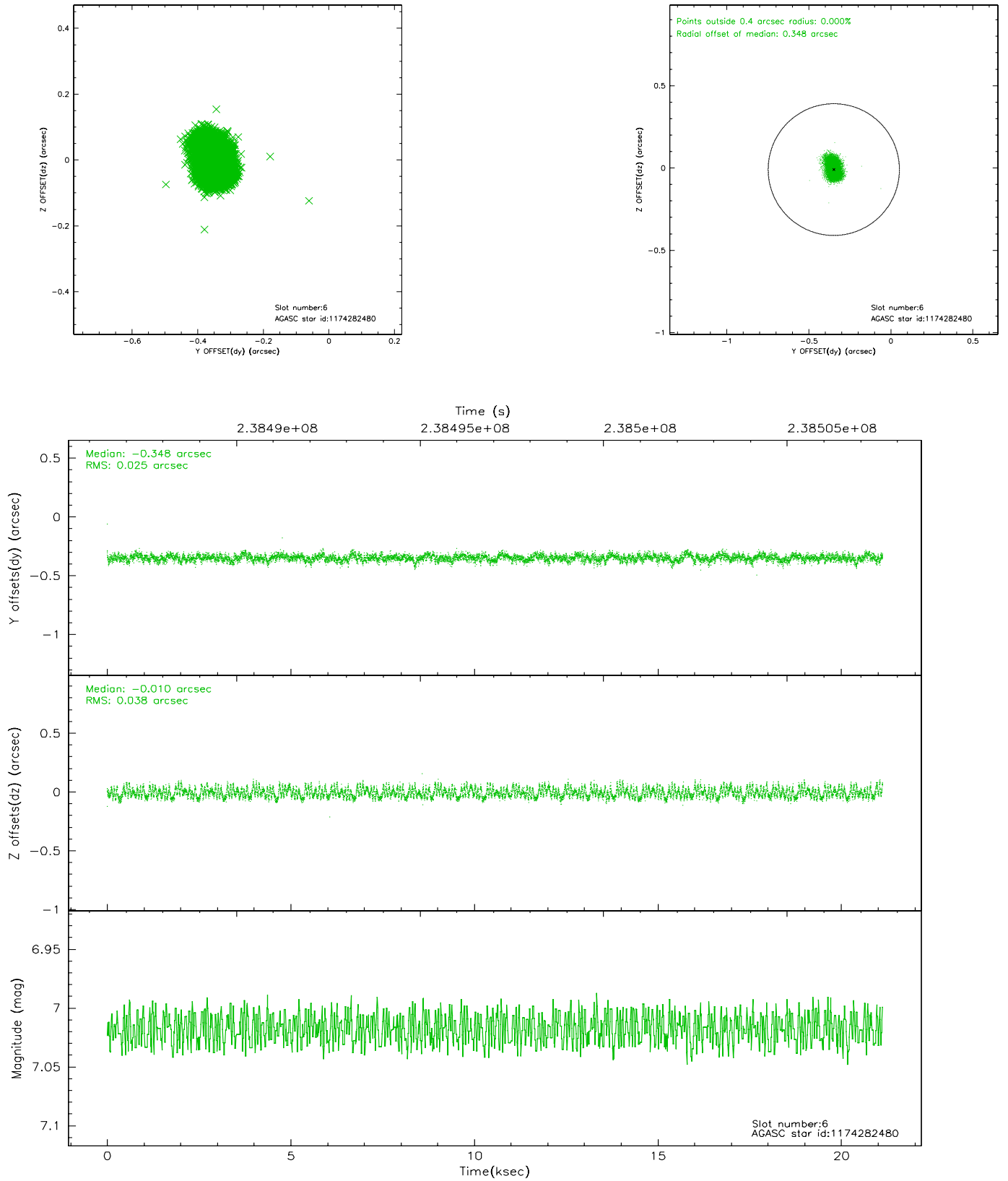
## 2.4.2 Slot 4



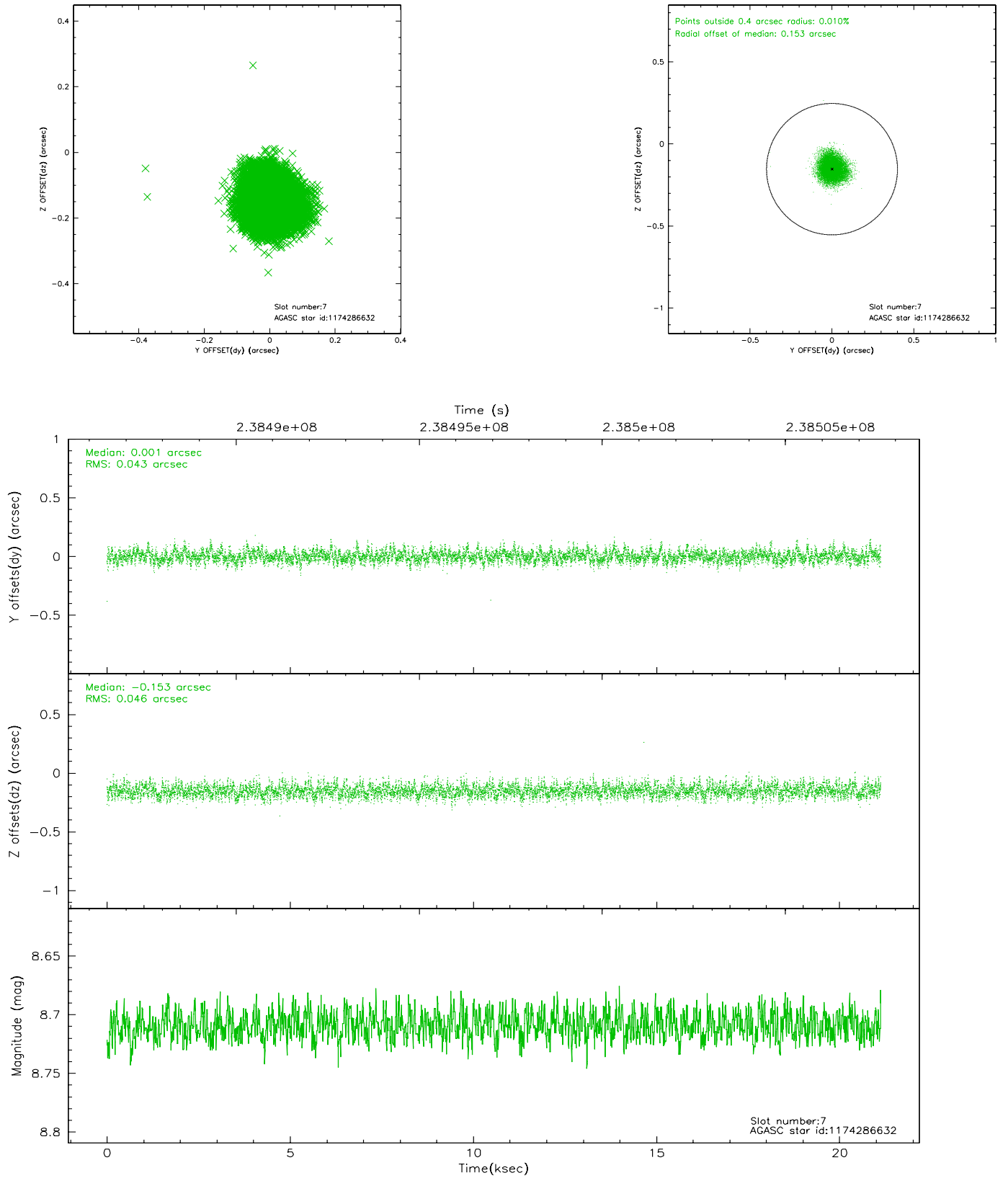
### 2.4.3 Slot 5



## 2.4.4 Slot 6

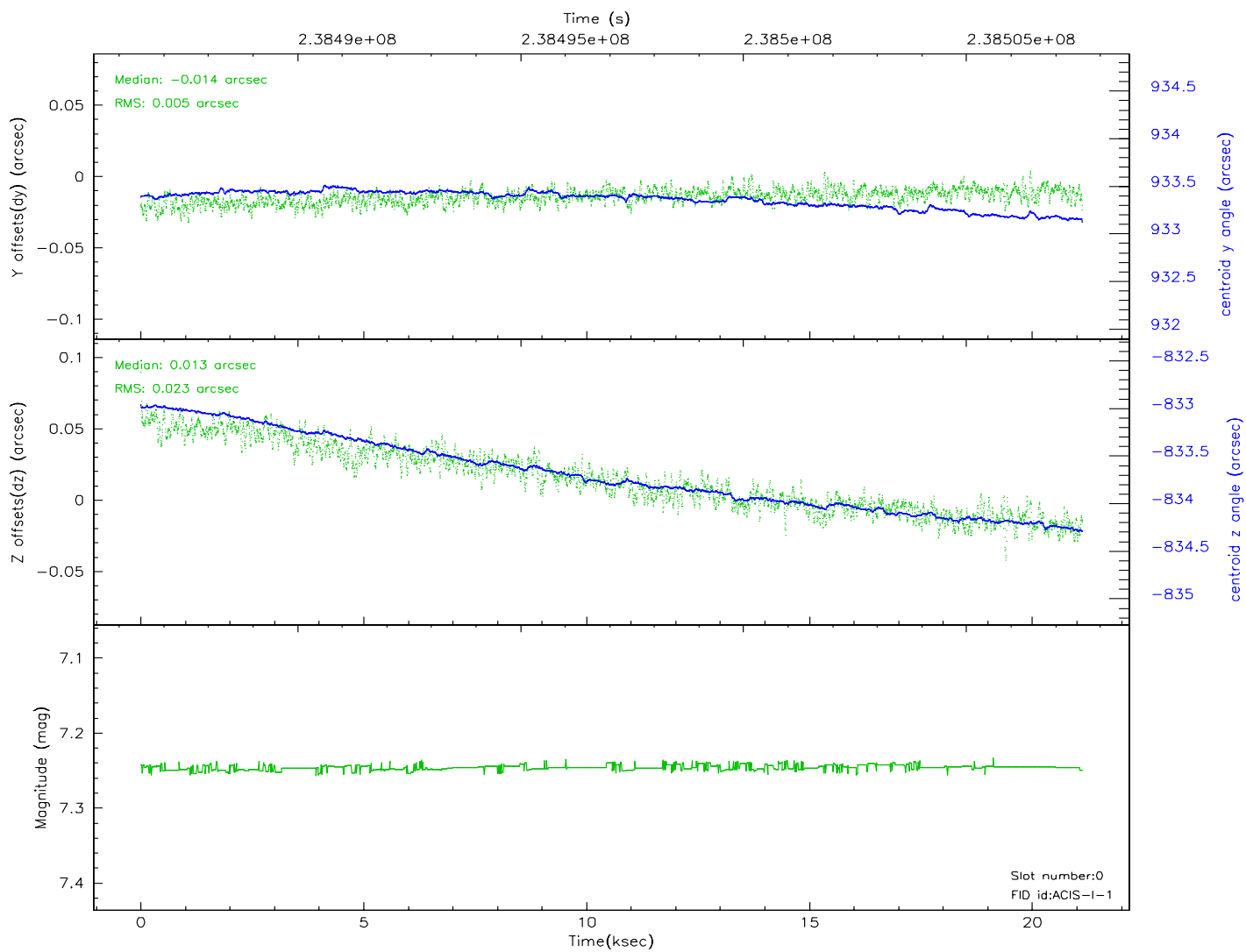
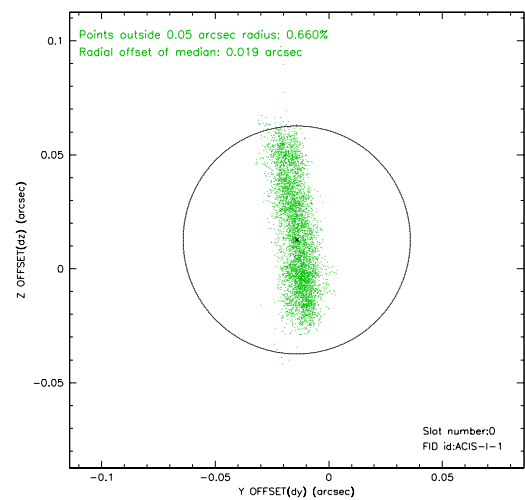
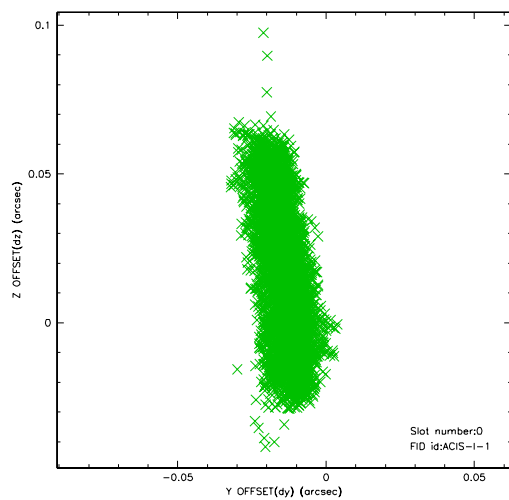


## 2.4.5 Slot 7

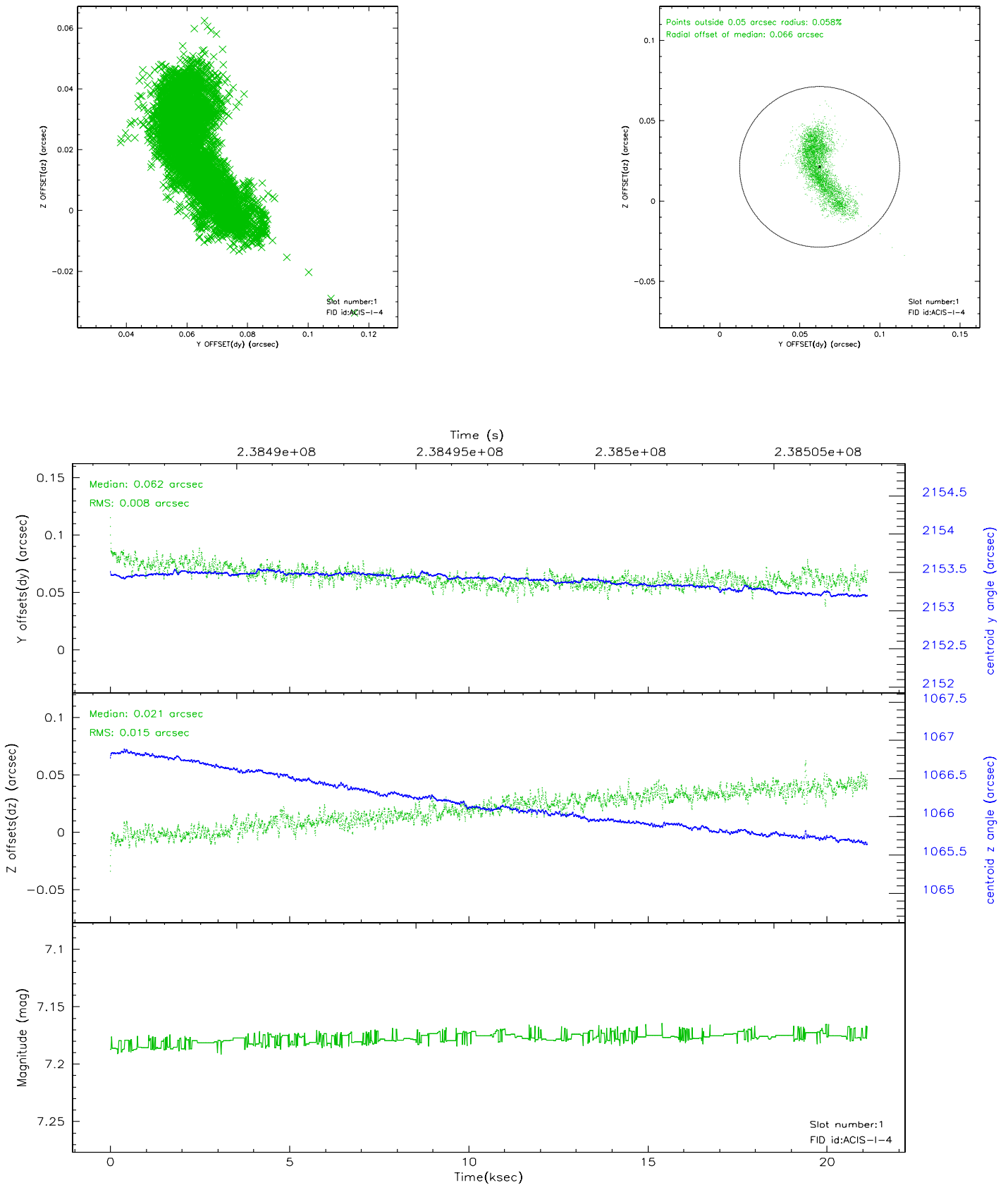


## 2.5 FID Slots

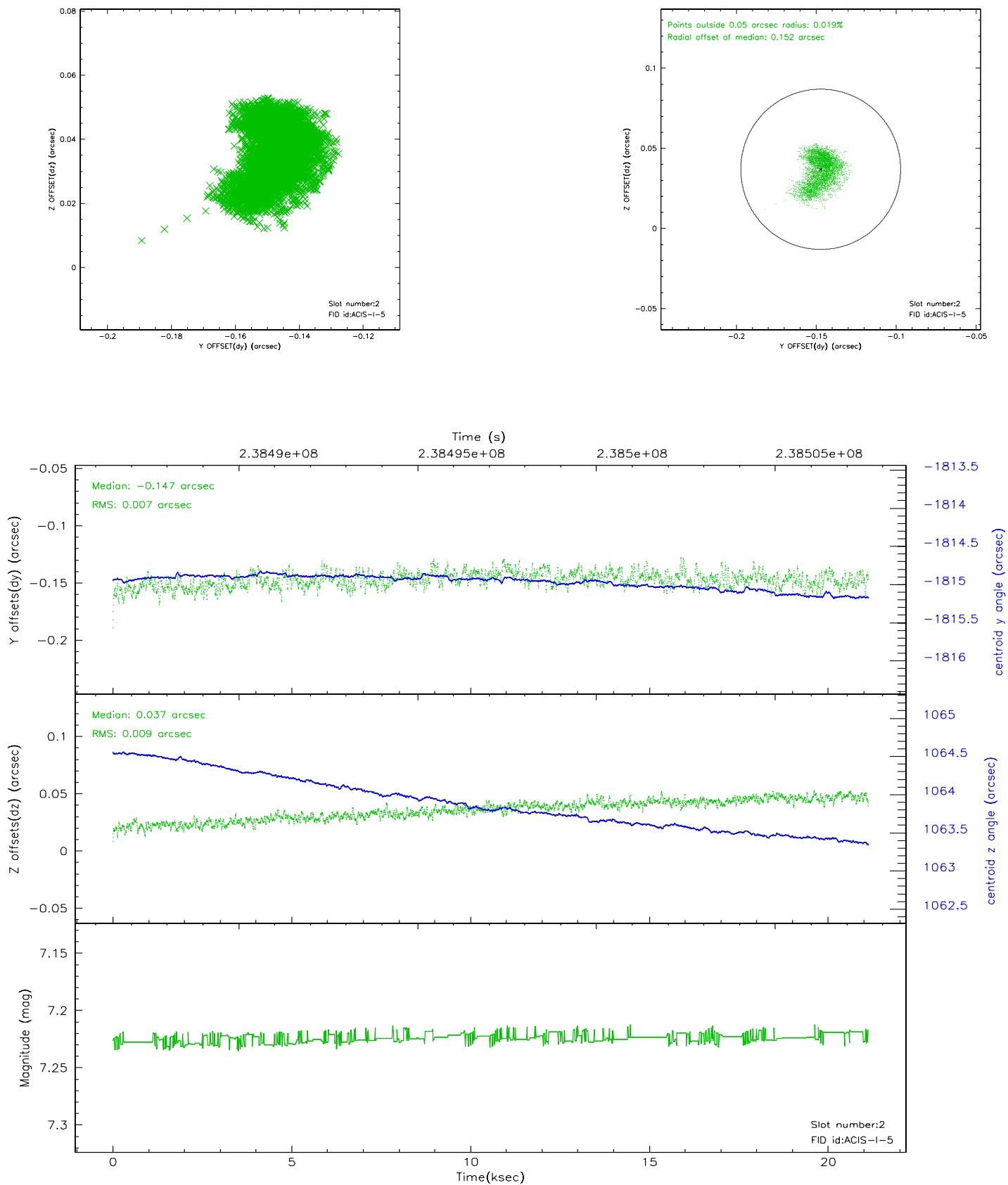
### 2.5.1 Slot 0



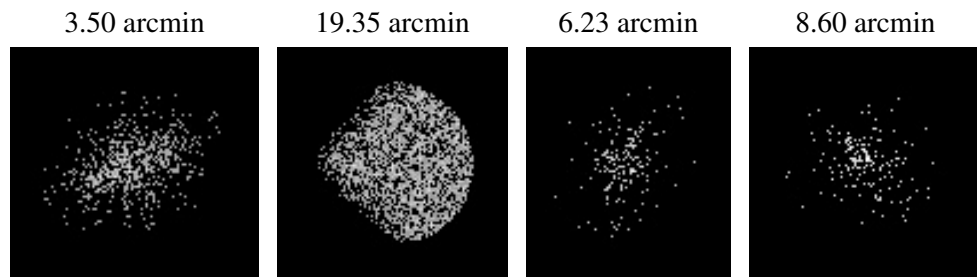
## 2.5.2 Slot 1



### 2.5.3 Slot 2



### 3 Point Sources



## A Summary

### A.1 Status

V&V Scientist	Jen Lauer
V&V Date (YYYY-MM-DD)	2006.03.15
V&V Edition	1
V&V Disposition and Status	OK
V&V Charge Time	21.12319

### A.2 Comments