

V&V Reference Report

L2 ASCDS Version : 8.1.1

Observation 62899 - L2 Version 6

Chandra X-Ray Center

L2 Processing Date : Oct 20 2010

Contents

1	Front	2
2	OBI	3
2.1	OBI	3
2.1.1	Images	3
2.1.2	Bias	3
2.1.3	Parameters	4
2.1.4	Events	4
2.2	Compared Parameters	5
2.3	Star Slots	6
2.4	FID Slots	6
A	Summary	7
A.1	Status	7
A.2	Comments	7

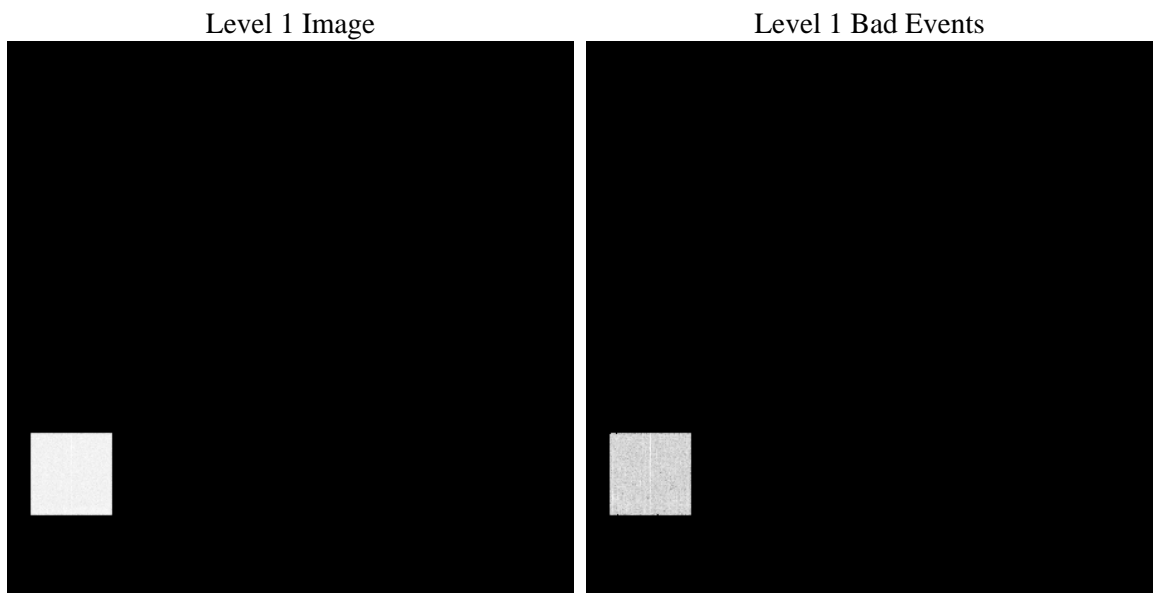
1 Front

seq_num	 	Sequence number
obs_id	62899	Observation id
title	ACIS-4 diagnostics	Proposal title
observer	CHANDRA engineering request/realtime commanding	Principal investig
object	 	Source name
dtcycle	0	
cycle	P	events from which exps? Prim/Second/Both
ra_targ	0.0	Observer's specified target RA
dec_targ	0.0	Observer's specified target Dec
ra_nom	325.02222177166	Nominal RA
dec_nom	-30.026887588586	Nominal Dec
roll_nom	288.08978061494	Nominal Roll
revision	6	Processing version of data
ontime	3158.0999995321	Sum of GTIs [s]
livetime	3145.0622867796	Livetime [s]
ontime4	3158.0999995321	Sum of GTIs [s]
l2events	226933	Number of level 2 events

2 OBI

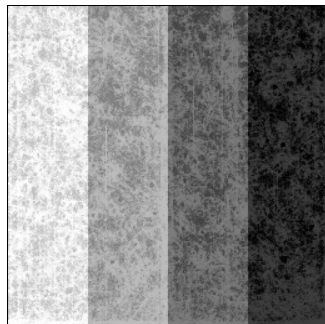
2.1 OBI

2.1.1 Images



2.1.2 Bias

Chip 4



2.1.3 Parameters

obi_num	0	Obi number			
ascdsver	8.3.2.1	ASCDS version number	sched_exp_time	0.0	Scheduled observation exposure time
caldsver	4.3.1	 	ontime	3158.0999995321	Sum of GTIs [s]
date	2010-10-20T11:13:19	Date and time of file creation	ontime4	3158.0999995321	Sum of GTIs [s]
revision	3	Processing version of data	l1events	275531	Number of level 1 events

2.1.4 Events

	ccd 4
level 1 events	275531
rejected events	47061
rejected %	17%

	ccd 4
grade 0 events	12221
	4%
grade 1 events	123
	0%
grade 2 events	163935
	59%
grade 3 events	1351
	0%
grade 4 events	1363
	0%
grade 5 events	3167
	1%
grade 6 events	49600
	18%
grade 7 events	43771
	15%

2.2 Compared Parameters

Parameter	Planned	Actual	Parameter	Planned	Actual
Instrument	ACIS	ACIS	Obspar format version number	6	6
Detector	ACIS-4	ACIS-4	Obspar file type	PREDICTED	ACTUAL
Grating	NONE	NONE	Obspar update status	NONE	UPDATED
Data mode	FAINT	FAINT	On-chip summing requested	N	N
Observation mode	SECONDARY	SECONDARY	Subarray requested	NONE	NONE
Pointing RA	0	325.0222217716615	Alternating exposures requested	N	N
Pointing Dec	0	-30.02688758858622	Primary exposure time	9.9	9.9
Pointing Roll	0.0	288.089780614941			
SIM focus pos (mm)	-0.684267	-0.6828225247311905			
SIM defocus (mm)	0	0.8505141146731063			
SIM translation stage pos (mm)	-190.132523	250.466033080201			
SIM translation stage offset (mm)	0	-0.01005468664627074			
Observation start time	59209726.789045	59209726.020625			
Observation start date	1999-11-17T07:08:47	1999-11-17T07:08:46			
Observation end time	59216571.739293	59216570.970872			
Observation end date	1999-11-17T09:02:52	1999-11-17T09:02:50			
Read mode	TIMED	TIMED			

2.3 Star Slots

2.4 FID Slots

A Summary

A.1 Status

V&V Scientist	Joy Nichols
V&V Date (YYYY-MM-DD)	2010.10.21
V&V Edition	1
V&V Disposition and Status	OK
V&V Charge Time	3.1580999995321

A.2 Comments

This observation is missing about 140 s in the middle.

9.9 slow clocking test on S0.

===

The focal plane temperature is approximately -110 C during this observation. This reprocessing of the data applies no CTI correction because none is available for this temperature at present.

The ACIS CTI correction has not been calibrated at this temperature, because it was early in the mission, and ACIS had not yet been lowered to the standard -119.7 C. Both front and back illuminated chips are affected. However a T_GAIN correction has been applied to the BI chips (ACIS-5 and ACIS-7) data included here.

The ACIS spectral response calibration is less accurate at these warmer temperatures than it is at -119.7 C. Users whose science objectives depend on the most accurate spectral response (ie: fitting line-rich spectra) may notice an effect. Users whose science objectives do not depend on the most accurate spectral response should not notice an effect.