

V&V Reference Report

L2 ASCDS Version : 7.6.7.1

Observation 6289 - L2 Version 002
Chandra X-Ray Center

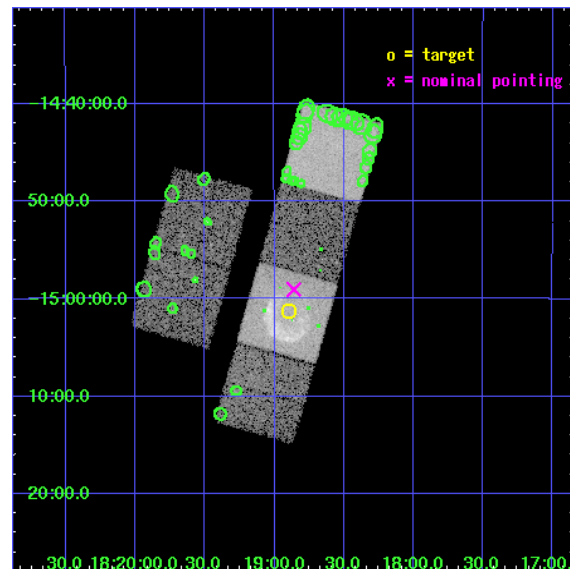
L2 Processing Date : Mar 8 2006

Contents

1	Front	2
2	OBI	3
2.1	OBI	3
2.1.1	Images	3
2.1.2	Bias	3
2.1.3	Parameters	4
2.1.4	Events	4
2.2	Compared Parameters	5
2.3	Aspect	6
2.4	Star Slots	9
2.4.1	Slot 3	9
2.4.2	Slot 4	10
2.4.3	Slot 5	11
2.4.4	Slot 6	12
2.4.5	Slot 7	13
2.5	FID Slots	14
2.5.1	Slot 0	14
2.5.2	Slot 1	15
2.5.3	Slot 2	16
3	Point Sources	17
A	Summary	18
A.1	Status	18
A.2	Comments	18

1 Front

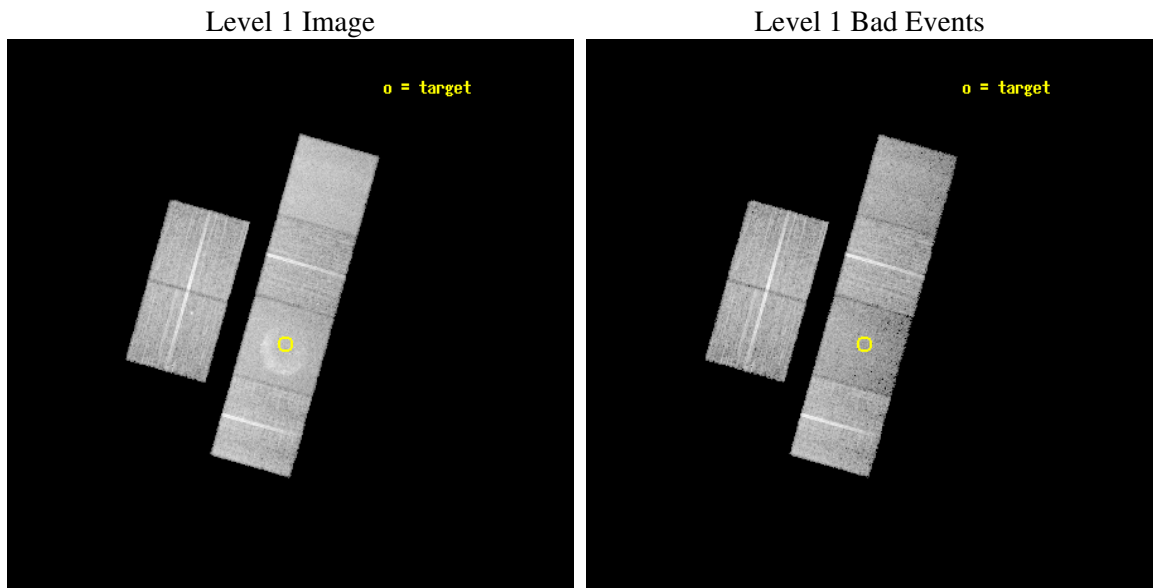
seq_num	500524
obs_id	6289
title	Small-Diameter Galactic Supernova Remnants: The Missing Young Remnants?
observer	Dr. Stephen Reynolds
object	G15.9+0.2
dtcycle	0
cycle	P
ra_targ	274.72375
dec_targ	-15.020556
ra_nom	274.71501249399
dec_nom	-14.984130449172
roll_nom	105.75435286946
revision	2
ontime	15123.199943662
livetime	14931.700879877
ontime2	15123.199943662
ontime3	15119.958963394
ontime5	15123.199943662
ontime6	15119.959003299
ontime7	15123.199943662
ontime8	15119.958973289
l2events	139179



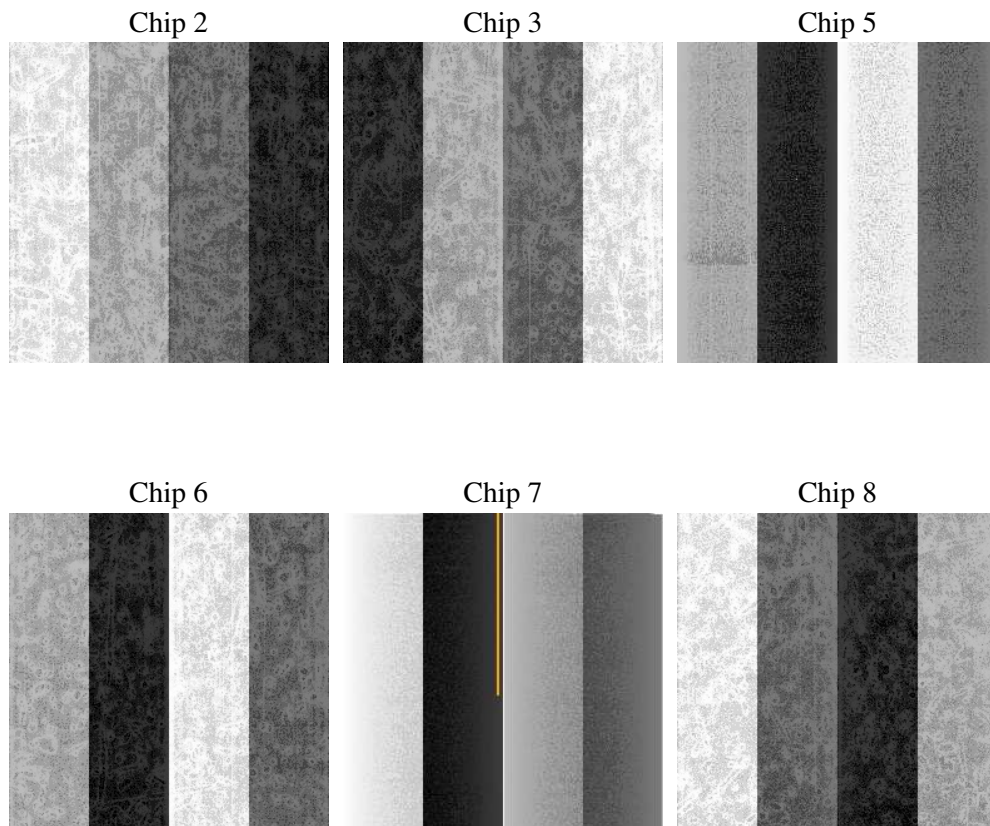
2 OBI

2.1 OBI

2.1.1 Images



2.1.2 Bias



2.1.3 Parameters

obi_num	0
ascdsver	7.6.7.1
caldbver	3.2.1
date	2006-03-08T10:46:31
revision	2

sched_exp_time	15000.000000
ontime	15602.204261482
ontime2	15602.204261482
ontime3	15602.20428142
ontime5	15602.204261482
ontime6	15602.204321325
ontime7	15602.204261482
ontime8	15602.204291314
l1events	607730

2.1.4 Events

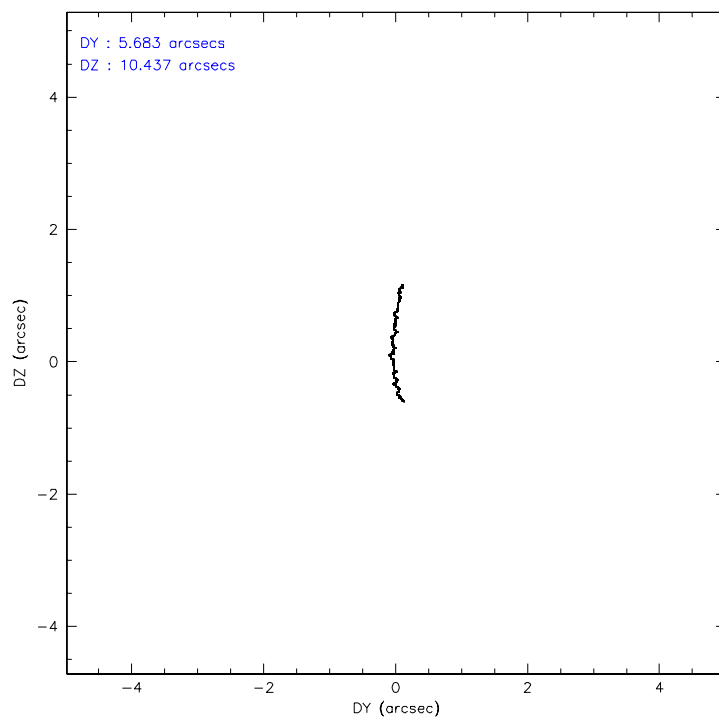
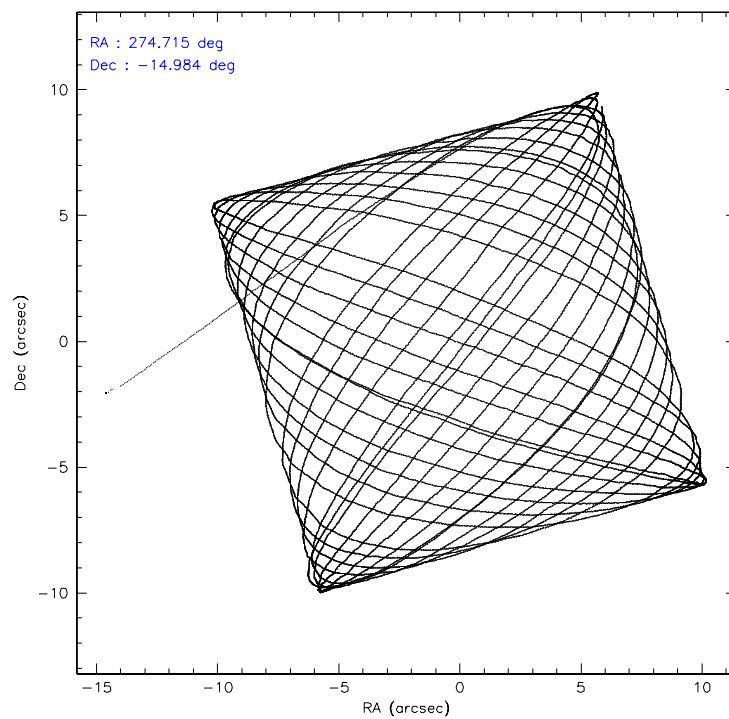
	ccd 2	ccd 3	ccd 5	ccd 6	ccd 7	ccd 8
level 1 events	96990	89351	112855	92631	107967	107936
rejected events	87687	80064	60963	83021	54915	89721
rejected %	90%	89%	54%	89%	50%	83%

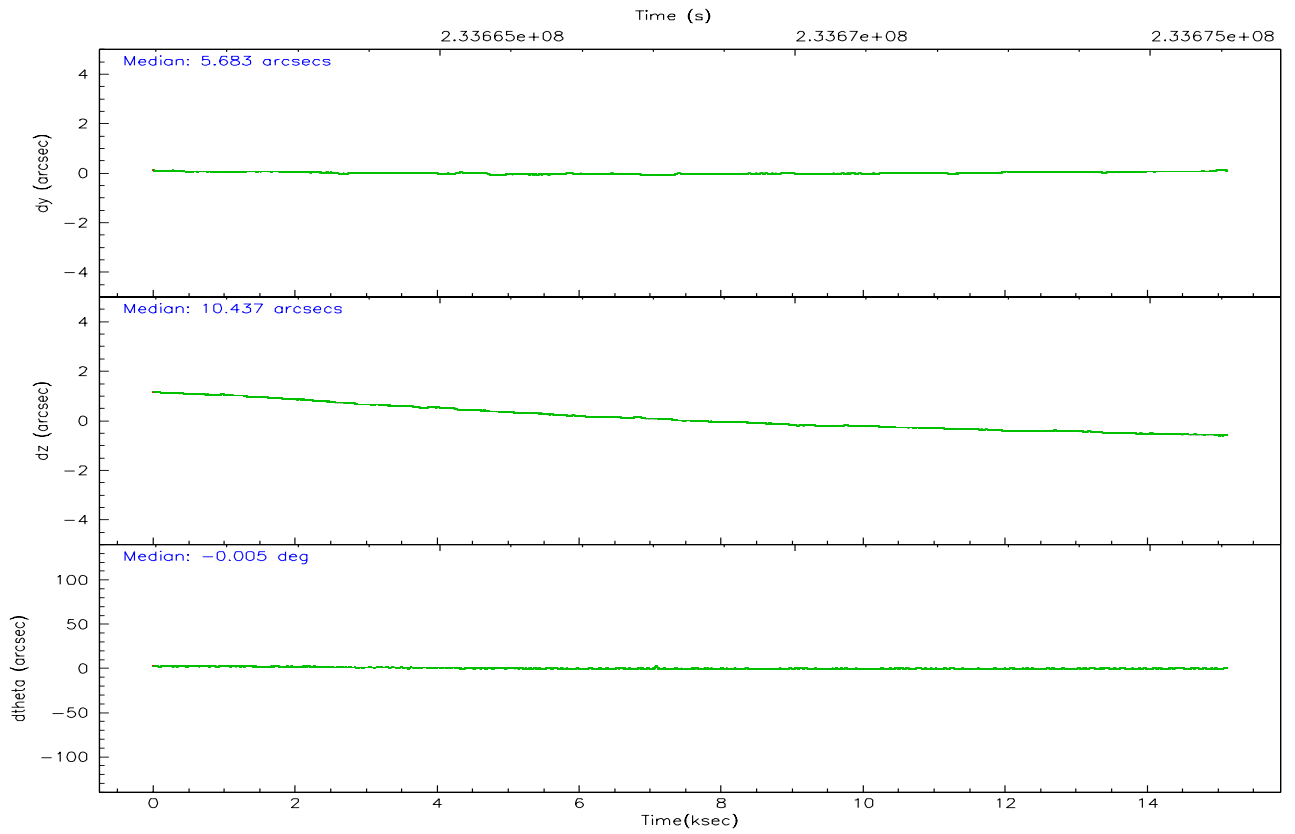
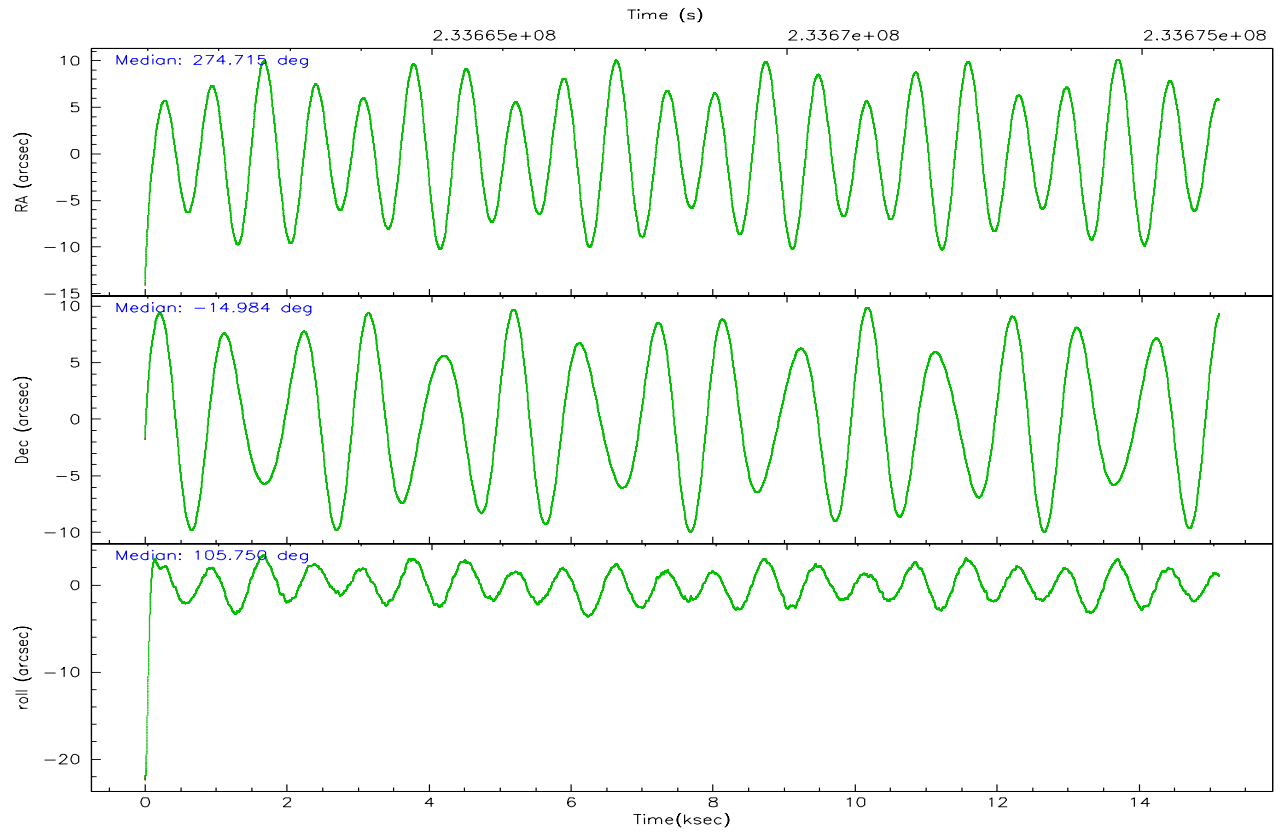
	ccd 2	ccd 3	ccd 5	ccd 6	ccd 7	ccd 8
grade 0 events	4315	4182	1420	4013	5005	4995
	4%	4%	1%	4%	4%	4%
grade 1 events	53	53	23	42	55	64
	0%	0%	0%	0%	0%	0%
grade 2 events	1839	1894	16621	1944	13808	3942
	1%	2%	14%	2%	12%	3%
grade 3 events	881	922	891	956	3495	1796
	0%	1%	0%	1%	3%	1%
grade 4 events	886	942	851	1026	3518	1603
	0%	1%	0%	1%	3%	1%
grade 5 events	2888	3324	6069	3543	7601	4808
	2%	3%	5%	3%	7%	4%
grade 6 events	1678	1631	33733	2015	28681	6507
	1%	1%	29%	2%	26%	6%
grade 7 events	84450	76403	53247	79092	45804	84221
	87%	85%	47%	85%	42%	78%

2.2 Compared Parameters

Parameter	Planned	Actual	Parameter	Planned	Actual
Instrument	ACIS	ACIS	Obspar format version number	6	6
Detector	ACIS-235678	ACIS-235678	Obspar file type	PREDICTED	ACTUAL
Grating	NONE	NONE	Obspar update status	NONE	UPDATED
Data mode	VFAINT	VFAINT	On-chip summing requested	N	N
Observation mode	POINTING	POINTING	Subarray requested	NONE	NONE
Pointing RA	274.735477	274.715012493986	Alternating exposures requested	N	N
Pointing Dec	-15.002863	-14.98413044917193	Primary exposure time	0.000000	3.2
Pointing Roll	105.603030	105.754352869465			
SIM focus pos (mm)	-0.684267	-0.6828225247311905			
SIM defocus (mm)	0	0.001444936568705701			
SIM translation stage pos (mm)	-190.132523	-190.1400660498719			
SIM translation stage offset (mm)	0	0.00754346686406393			
Observation start time	233661088.184000	233659805.03942			
Observation start date	2005-05-28T09:50:24	2005-05-28T09:30:05			
Observation end time	233676088.184000	233677093.20271			
Observation end date	2005-05-28T14:00:24	2005-05-28T14:18:13			
Read mode	TIMED	TIMED			

2.3 Aspect



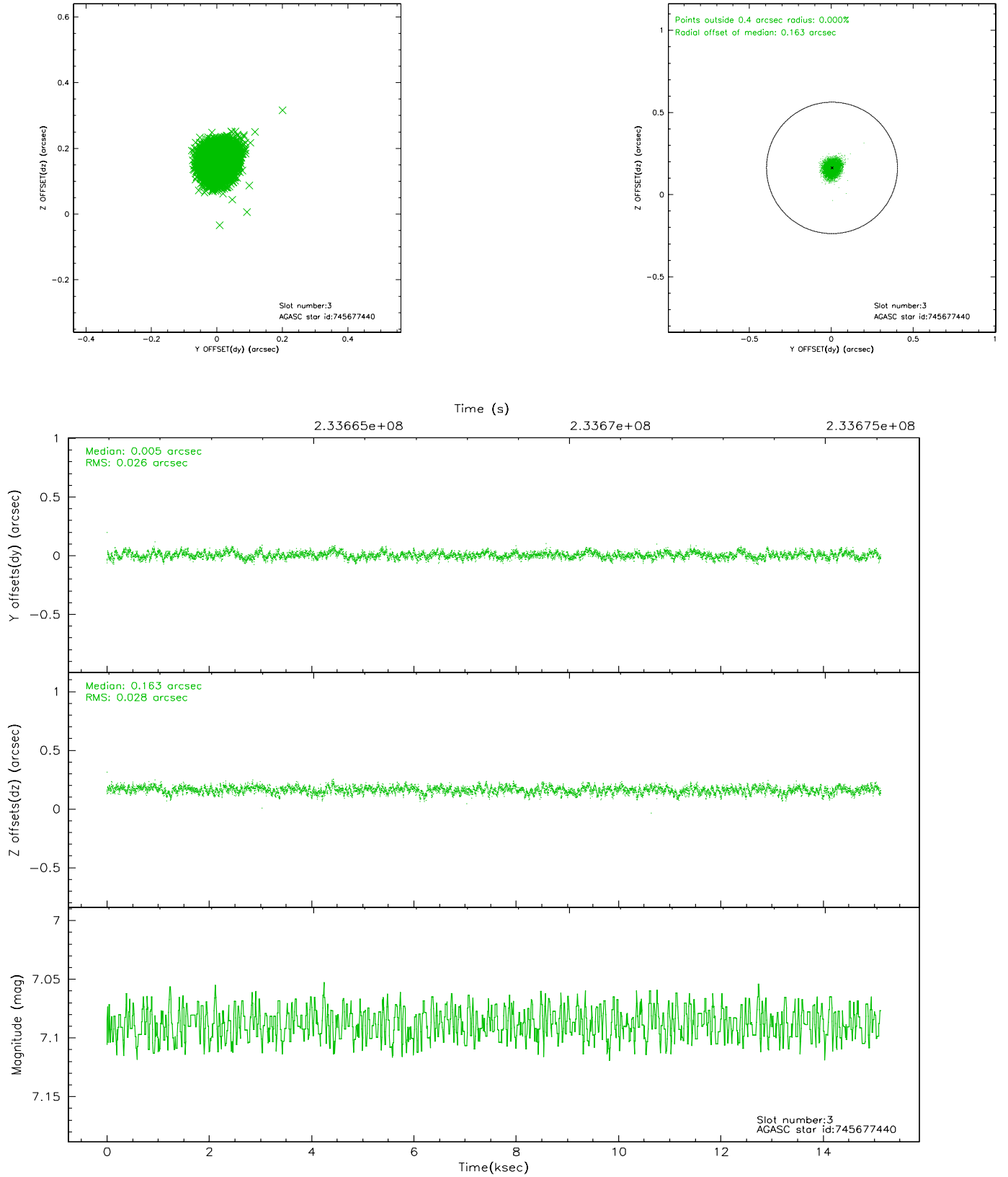


Slot Statistics

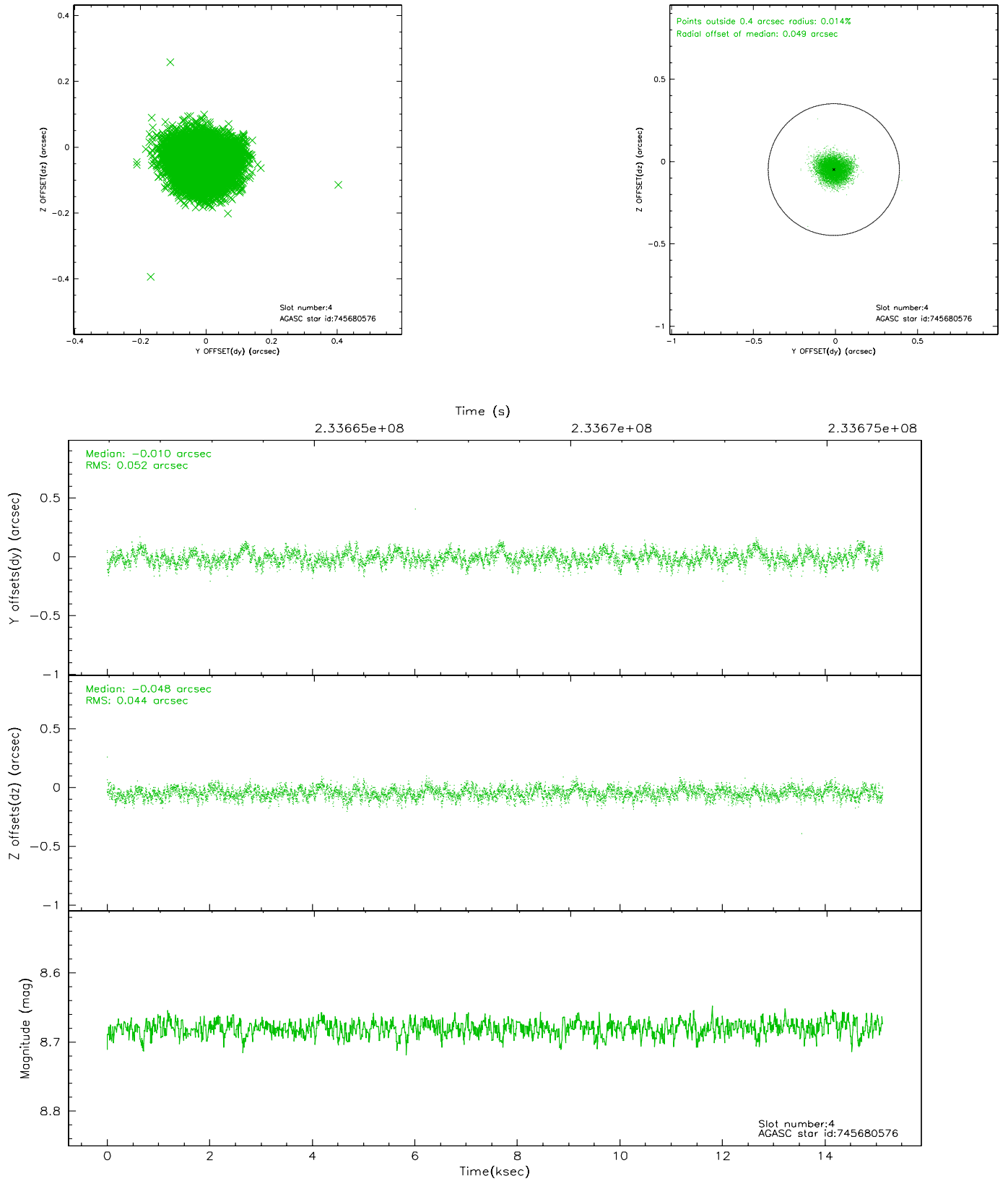
slot	status	id	mag	n_pts	med_dy	med_dz	dr1	dr2	ra	dec	mean_y	mean_z
0	FID	ACIS-S-2	7.10	3690	-0.063	-0.007	0.011	0.020	0.000000	0.000000	-758.44	-1731.84
1	FID	ACIS-S-4	7.21	3690	0.074	0.033	0.011	0.025	0.000000	0.000000	2154.81	176.41
2	FID	ACIS-S-5	7.23	3688	-0.041	-0.015	0.008	0.014	0.000000	0.000000	-1810.91	170.32
3	GUIDE	745677440	7.09	7380	0.005	0.163	0.041	0.066	275.264510	-14.978543	-412.71	-1794.41
4	GUIDE	745680576	8.68	7377	-0.010	-0.048	0.073	0.116	274.063292	-14.644899	1867.40	1909.34
5	GUIDE	821172096	7.77	7379	0.035	0.111	0.053	0.084	275.077024	-15.219483	-1070.70	-932.32
6	GUIDE	745679408	7.65	7378	-0.194	-0.219	0.057	0.088	274.073517	-14.949069	802.06	2166.24
7	GUIDE	821179256	7.41	7376	0.161	-0.006	0.049	0.076	274.840900	-15.612800	-2212.96	238.82

2.4 Star Slots

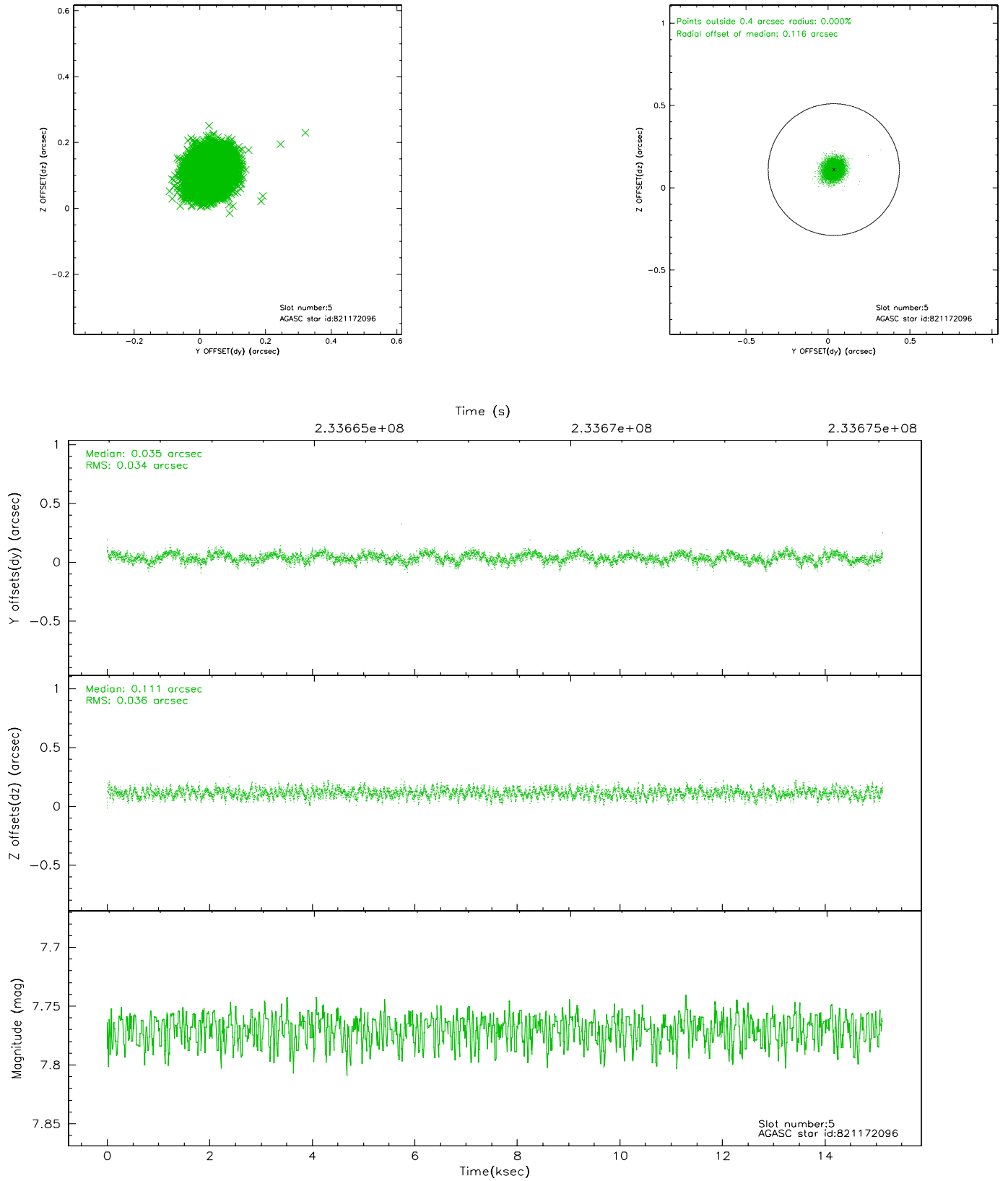
2.4.1 Slot 3



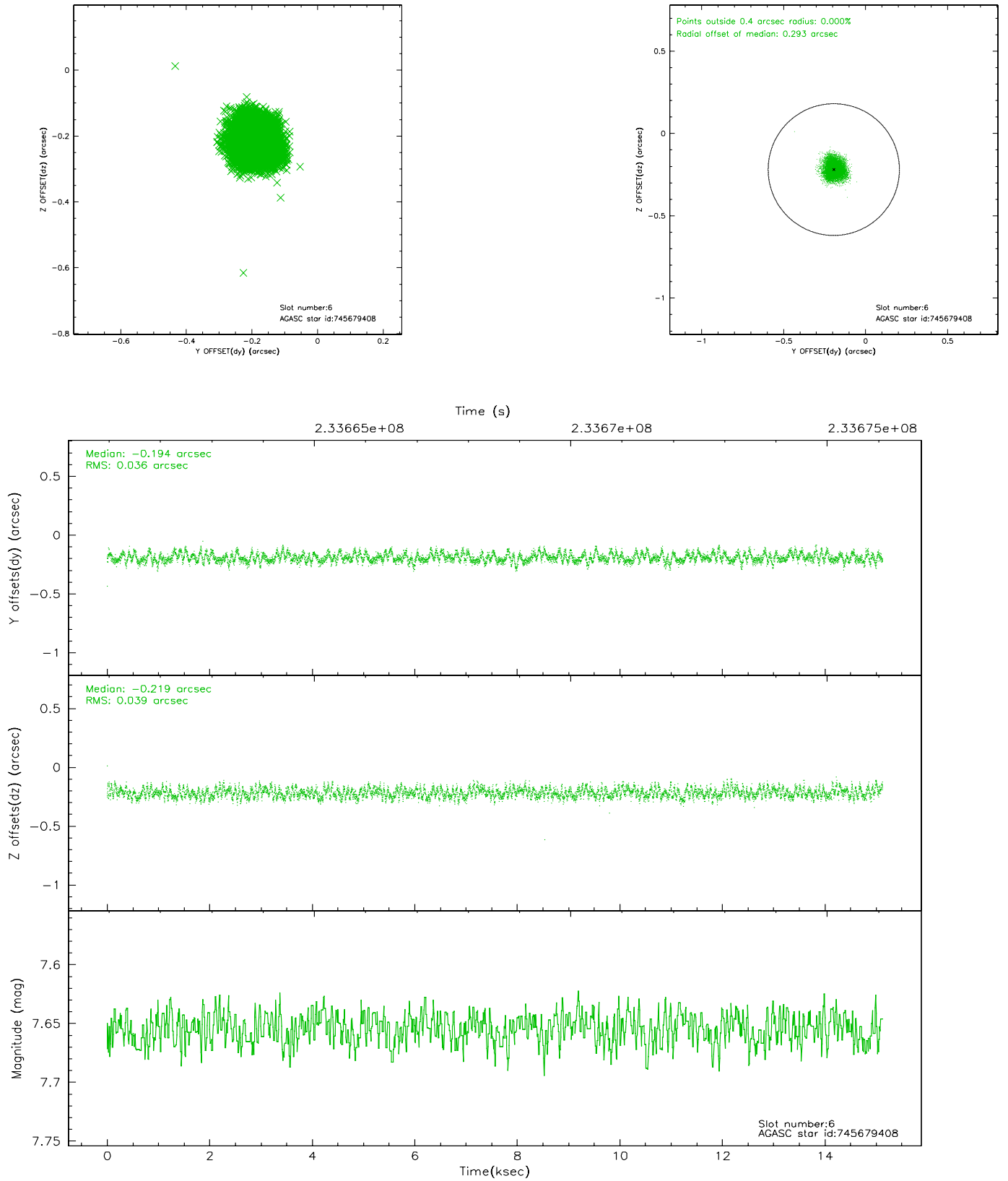
2.4.2 Slot 4



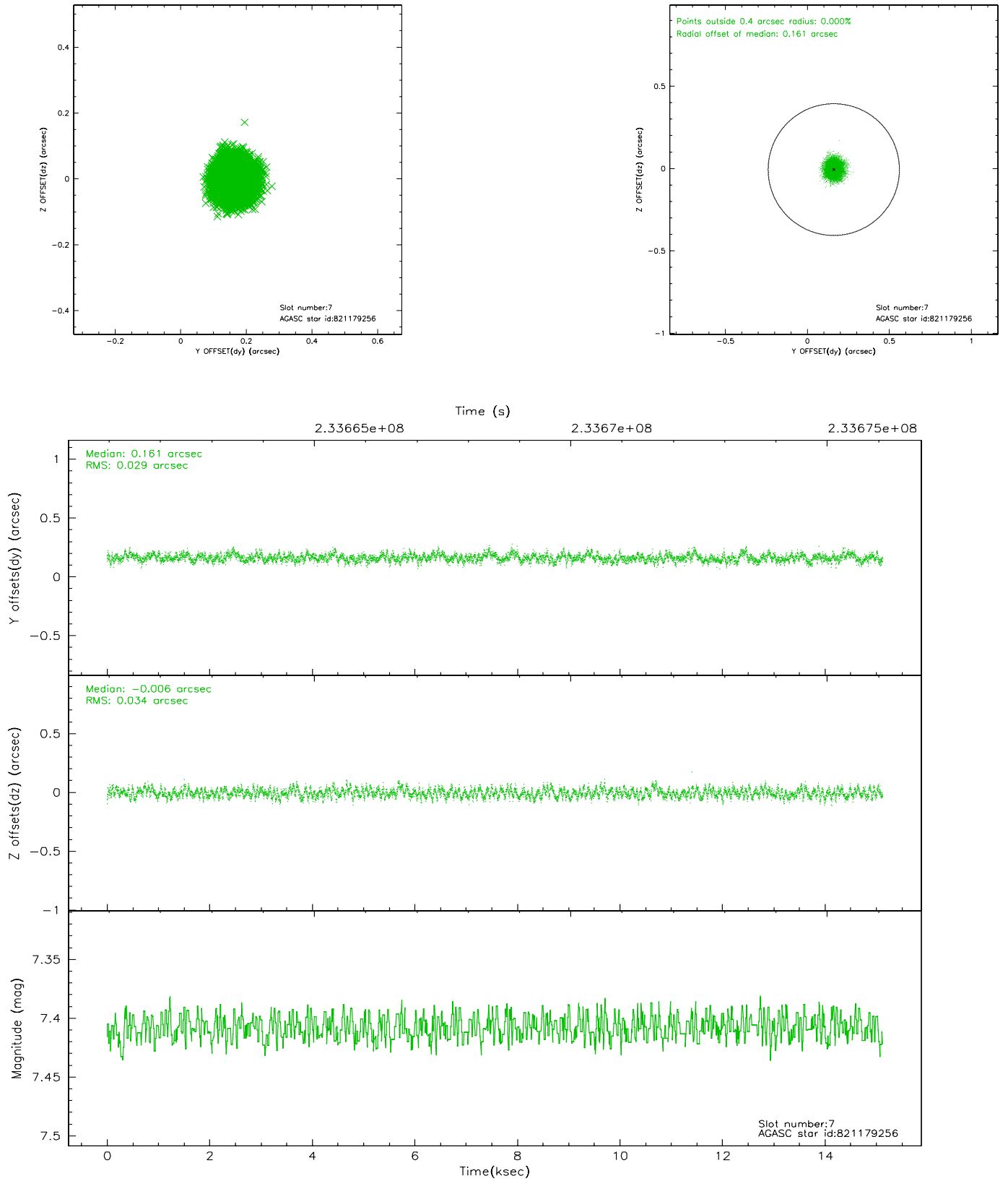
2.4.3 Slot 5



2.4.4 Slot 6

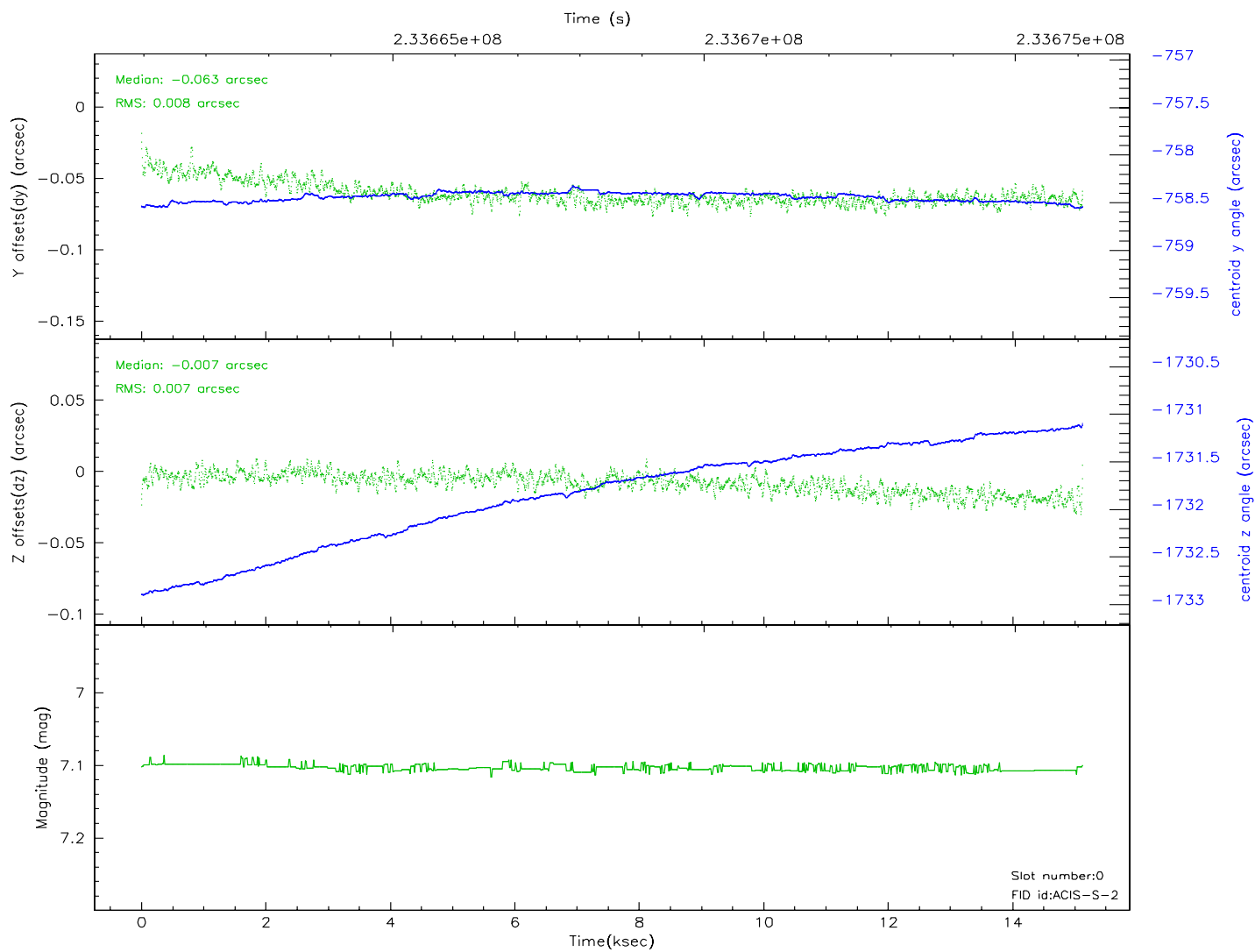
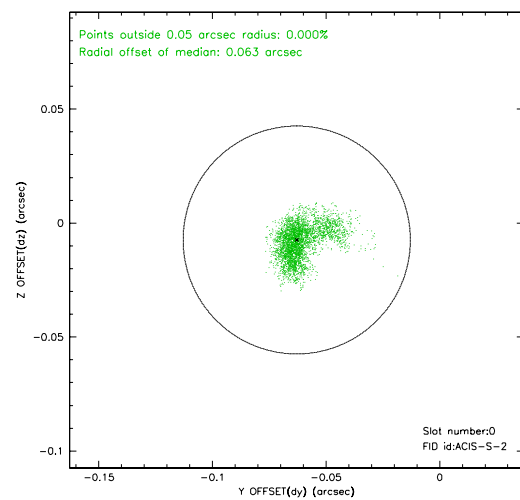
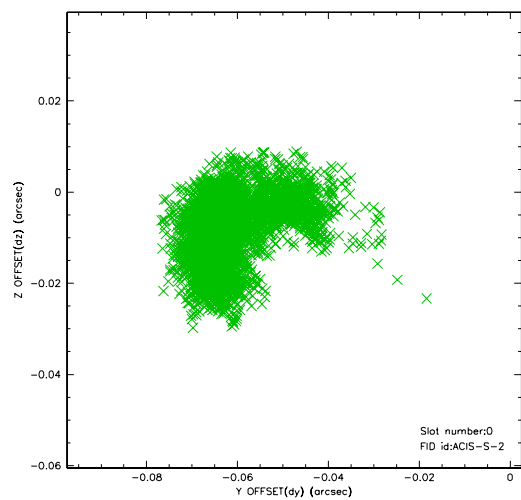


2.4.5 Slot 7

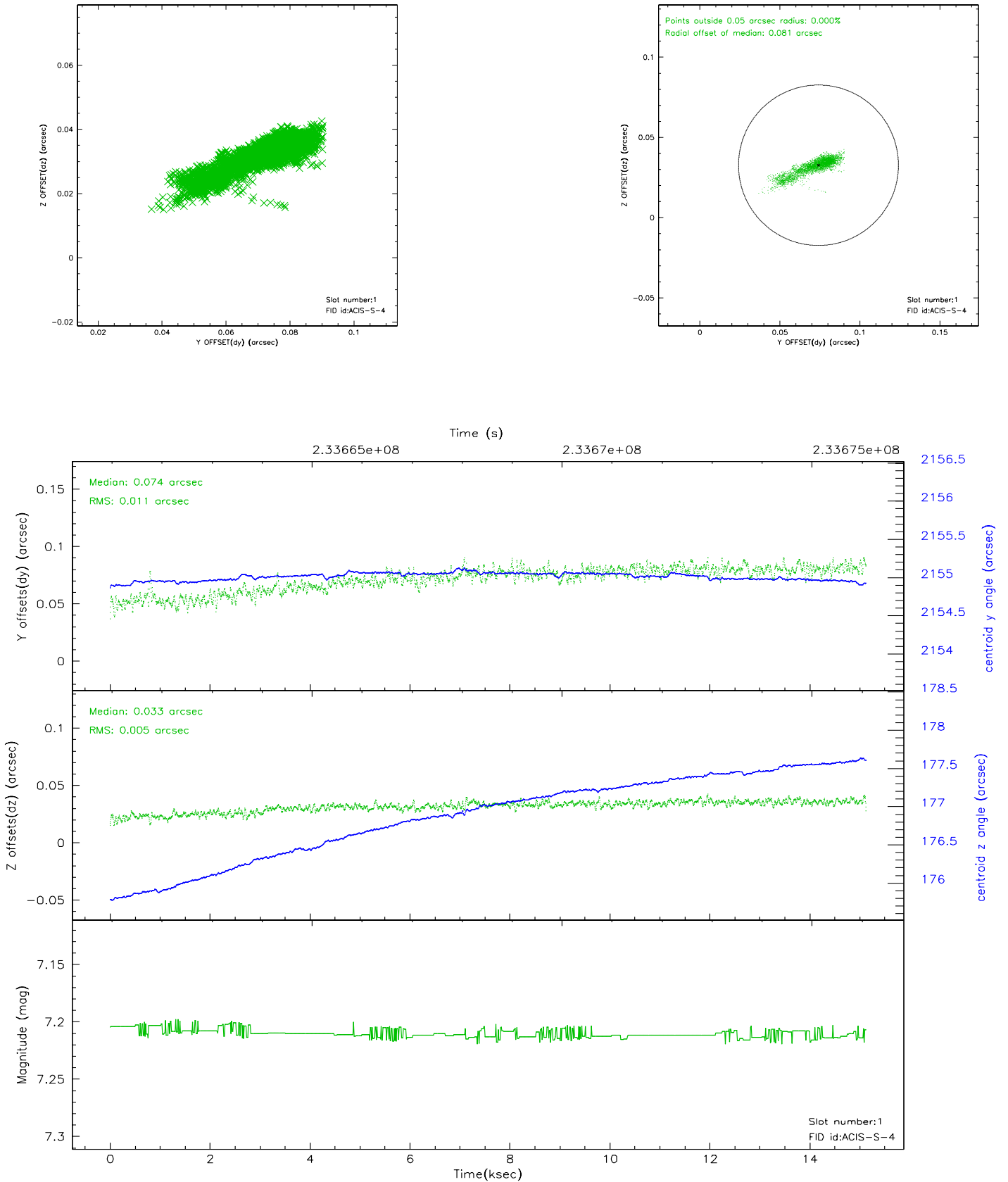


2.5 FID Slots

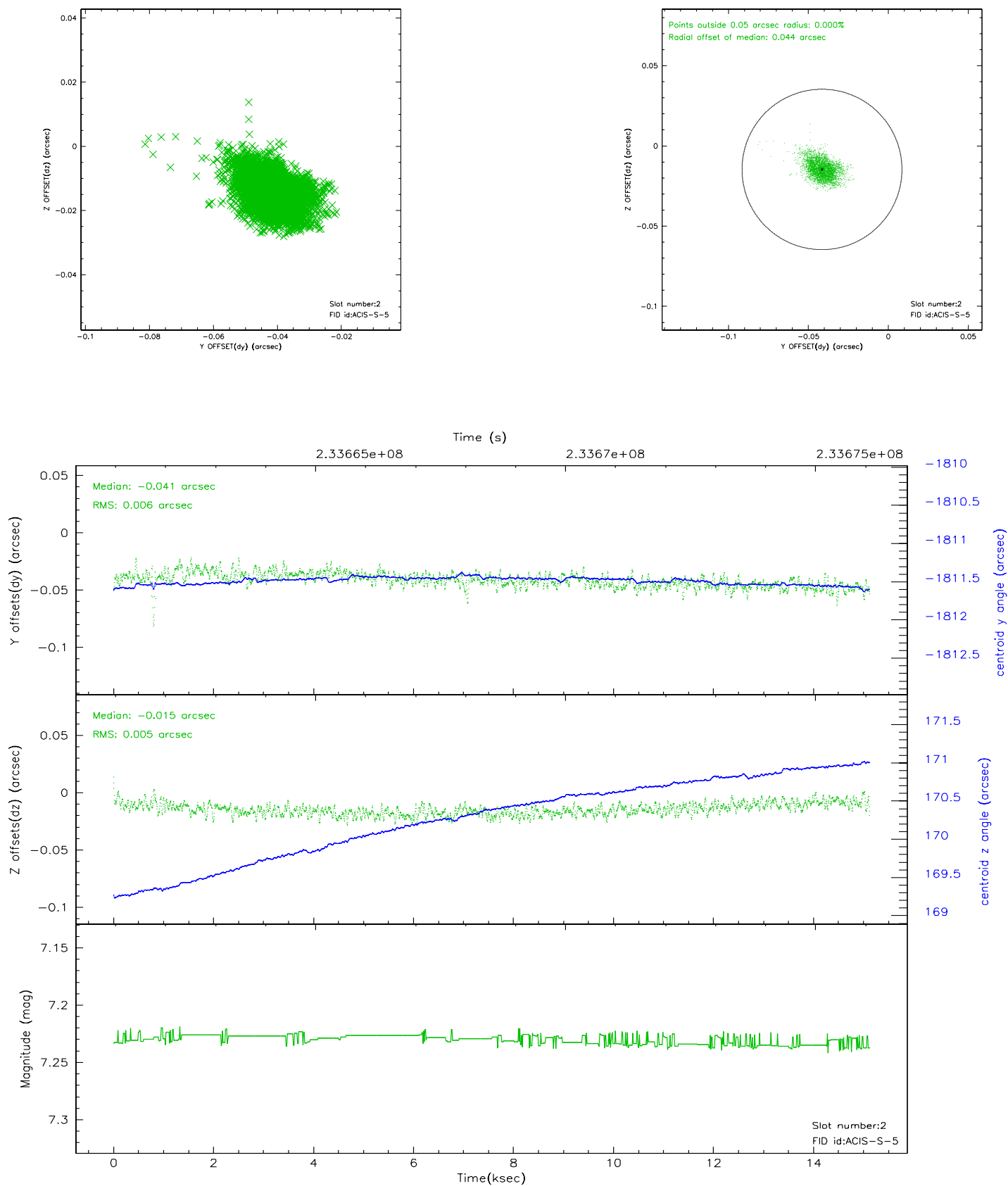
2.5.1 Slot 0



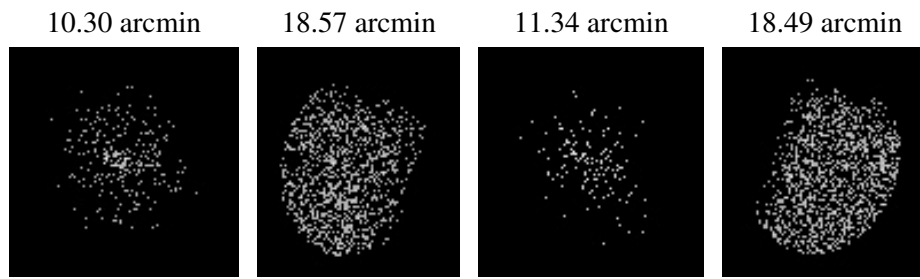
2.5.2 Slot 1



2.5.3 Slot 2



3 Point Sources



A Summary

A.1 Status

V&V Scientist	Jen Lauer
V&V Date (YYYY-MM-DD)	2006.03.08
V&V Edition	1
V&V Disposition and Status	OK
V&V Charge Time	15.12319

A.2 Comments