

# V&V Reference Report

## L2 ASCDS Version : 7.6.10

Observation 62859 - L2 Version 001  
Chandra X-Ray Center

L2 Processing Date : Jan 11 2007

## Contents

<b>1</b>	<b>Front</b>	<b>2</b>
<b>2</b>	<b>OBI</b>	<b>3</b>
2.1	OBI . . . . .	3
2.1.1	Images . . . . .	3
2.1.2	Bias . . . . .	3
2.1.3	Parameters . . . . .	4
2.1.4	Events . . . . .	4
2.2	Compared Parameters . . . . .	5
2.3	Star Slots . . . . .	6
2.4	FID Slots . . . . .	6
<b>A</b>	<b>Summary</b>	<b>7</b>
A.1	Status . . . . .	7
A.2	Comments . . . . .	7

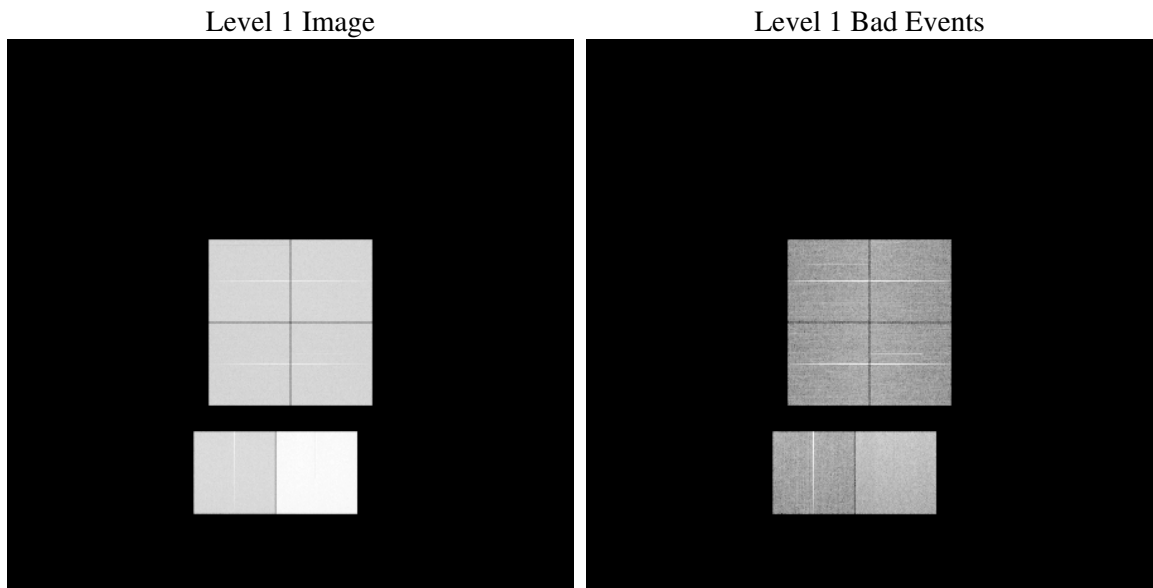
# 1 Front

seq_num	&#160
obs_id	62859
title	ACIS-012367 diagnostics
observer	CHANDRA engineering request/realtime commanding
object	&#160
dtcycle	0
cycle	P
ra_targ	0.0
dec_targ	0.0
ra_nom	59.99254136197
dec_nom	4.0276540772306
roll_nom	72.316752171804
revision	2
ontime	47059.293477461
livetime	46463.400367745
ontime0	18272.882709101
ontime1	18665.808177575
ontime2	17297.332939446
ontime3	17559.855953082
ontime6	19381.313343748
ontime7	47059.293477461
l2events	7830070

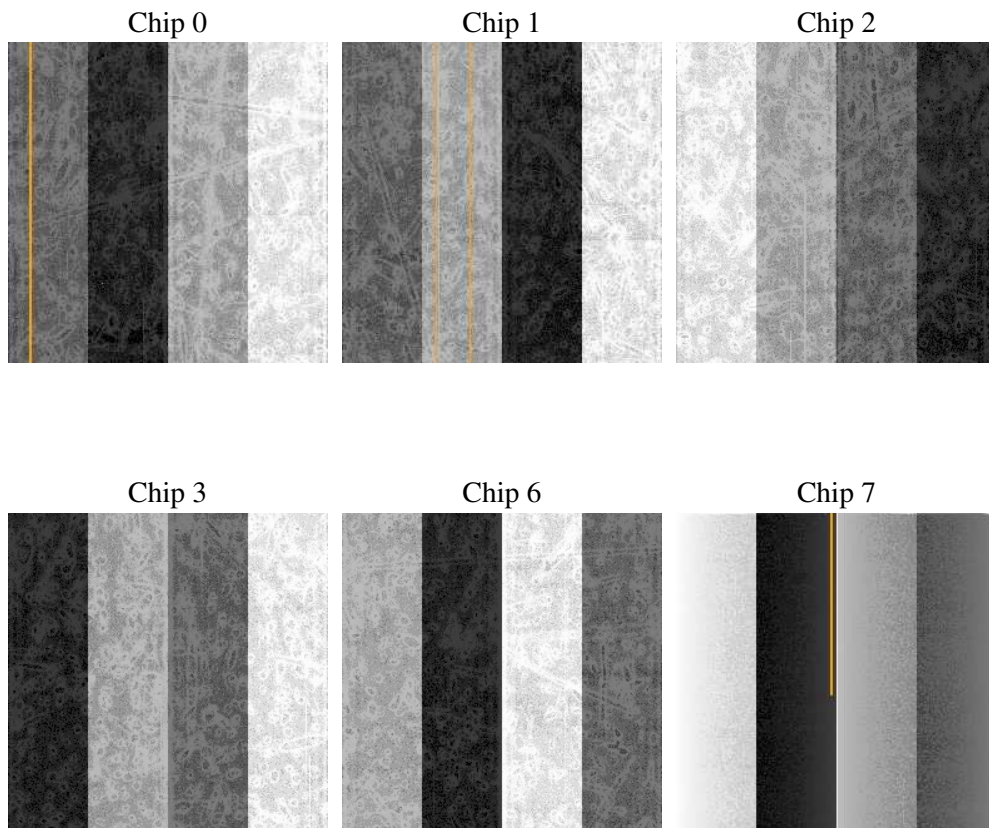
## 2 OBI

### 2.1 OBI

#### 2.1.1 Images



#### 2.1.2 Bias



### 2.1.3 Parameters

obi_num	0
ascdsver	7.6.10
caldbver	3.3.0
date	2007-01-11T05:45:05
revision	2

sched_exp_time	0.0
ontime	47059.293477461
ontime0	18272.882709101
ontime1	18665.808177575
ontime2	17297.332939446
ontime3	17559.855953082
ontime6	19381.313343748
ontime7	47059.293477461
l1events	9068712

### 2.1.4 Events

	ccd 0	ccd 1	ccd 2	ccd 3	ccd 6	ccd 7
level 1 events	1182590	1208538	1140931	1160407	1316810	3059436
rejected events	130184	131082	132639	133679	141830	243314
rejected %	11%	10%	11%	11%	10%	7%

	ccd 0	ccd 1	ccd 2	ccd 3	ccd 6	ccd 7
grade 0 events	580951	595603	560871	574523	640665	716099
	49%	49%	49%	49%	48%	23%
grade 1 events	2922	2913	2816	3019	3161	1875
	0%	0%	0%	0%	0%	0%
grade 2 events	186606	190017	177477	179929	203348	621816
	15%	15%	15%	15%	15%	20%
grade 3 events	67147	68140	63680	65192	72761	286664
	5%	5%	5%	5%	5%	9%
grade 4 events	66403	68163	63149	65090	72799	285387
	5%	5%	5%	5%	5%	9%
grade 5 events	9318	9487	8737	9275	10774	49603
	0%	0%	0%	0%	0%	1%
grade 6 events	152677	157494	144739	143447	187072	910231
	12%	13%	12%	12%	14%	29%
grade 7 events	116566	116721	119462	119932	126230	187761
	9%	9%	10%	10%	9%	6%

## 2.2 Compared Parameters

Parameter	Planned	Actual	Parameter	Planned	Actual
Instrument	ACIS	ACIS	Obspar format version number	6	6
Detector	ACIS-012367	ACIS-012367	Obspar file type	PREDICTED	ACTUAL
Grating	NONE	NONE	Obspar update status	NONE	UPDATED
Data mode	FAINT	FAINT	On-chip summing requested	N	N
Observation mode	SECONDARY	SECONDARY	Subarray requested	NONE	NONE
Pointing RA	0	59.99254136196962	Alternating exposures requested	N	N
Pointing Dec	0	4.027654077230602	Primary exposure time	0.000000	3.2
Pointing Roll	0.0	72.31675217180376			
SIM focus pos (mm)	-0.782348	-0.6828225247311905			
SIM defocus (mm)	0	0.8505141146731063			
SIM translation stage pos (mm)	-233.592463	250.466033080201			
SIM translation stage offset (mm)	0	-0.01005468664627074			
Observation start time	120508782.014	120508781.2456			
Observation start date	2001-10-26T18:39:42	2001-10-26T18:39:41			
Observation end time	120560644.966	120560644.19766			
Observation end date	2001-10-27T09:04:05	2001-10-27T09:04:04			
Read mode	TIMED	TIMED			

## **2.3 Star Slots**

## **2.4 FID Slots**

## A Summary

### A.1 Status

V&V Scientist	Jen Lauer
V&V Date (YYYY-MM-DD)	2007.01.11
V&V Edition	1
V&V Disposition and Status	OK
V&V Charge Time	47.0592934

### A.2 Comments