

V&V Reference Report

L2 ASCDS Version : 7.6.7

Observation 6279 - L2 Version 002
Chandra X-Ray Center

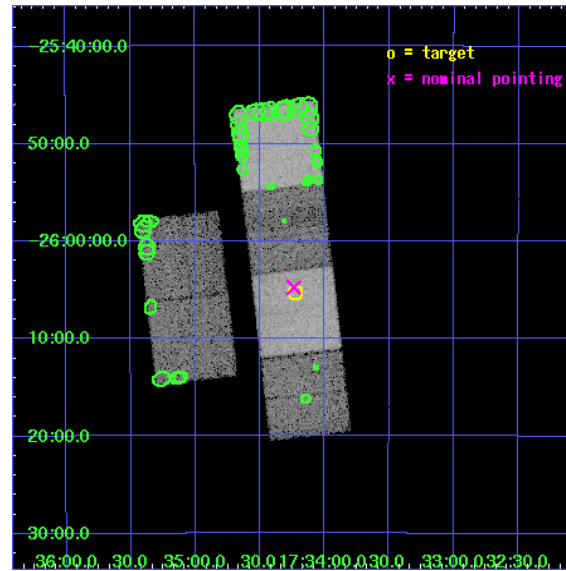
L2 Processing Date: Mar 3 2006

Contents

1	Front	2
2	OBI	3
2.1	OBI	3
2.1.1	Images	3
2.1.2	Bias	3
2.1.3	Parameters	4
2.1.4	Events	4
2.2	Compared Parameters	5
2.3	Aspect	6
2.4	Star Slots	9
2.4.1	Slot 3	9
2.4.2	Slot 4	10
2.4.3	Slot 5	11
2.4.4	Slot 6	12
2.4.5	Slot 7	13
2.5	FID Slots	14
2.5.1	Slot 0	14
2.5.2	Slot 1	15
2.5.3	Slot 2	16
3	Point Sources	17
A	Summary	18
A.1	Status	18
A.2	Comments	18

1 Front

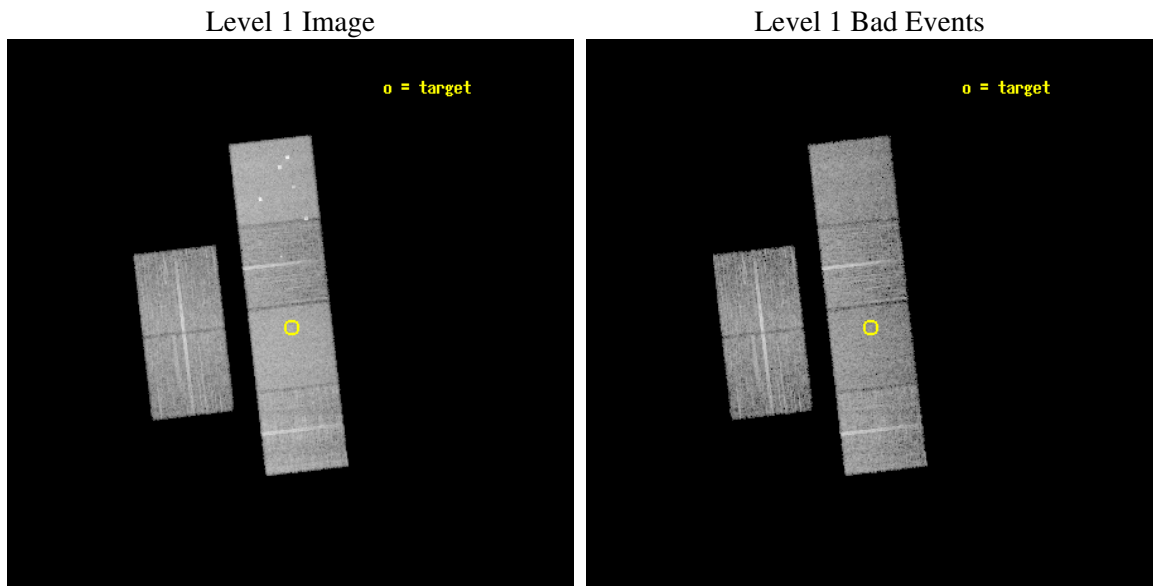
seq_num	400398
obs_id	6279
title	Cooling curves of accretion-heated neutron stars
observer	Dr. Rudy Wijnands
object	KS 1731-260
dtcycle	0
cycle	P
ra_targ	263.55625
dec_targ	-26.088556
ra_nom	263.55935020929
dec_nom	-26.079318298759
roll_nom	83.457985057993
revision	2
ontime	10508.799960852
livetime	10375.731208108
ontime2	10508.799960852
ontime3	10508.799960852
ontime5	10508.799960852
ontime6	10508.799960852
ontime7	10508.799960852
ontime8	10505.558970571
l2events	158838



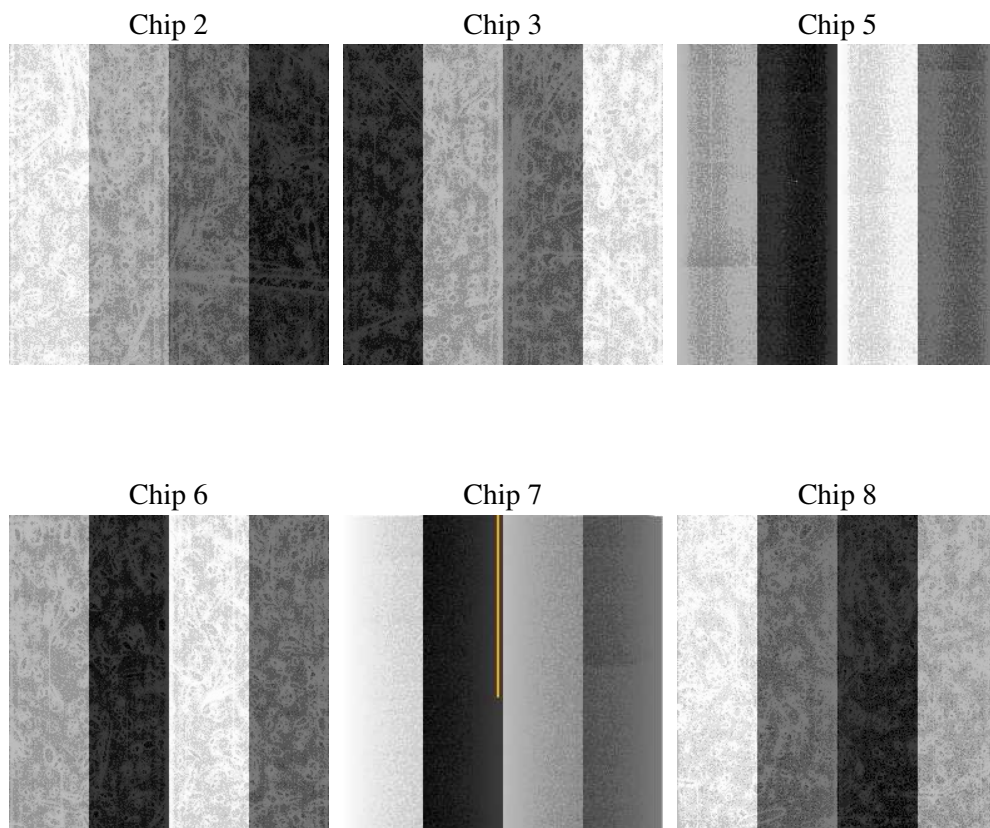
2 OBI

2.1 OBI

2.1.1 Images



2.1.2 Bias



2.1.3 Parameters

obi_num	0
ascdsver	7.6.7
caldbver	3.2.1
date	2006-03-03T09:12:51
revision	2

sched_exp_time	10753.811000
ontime	10513.847898364
ontime2	10513.847918272
ontime3	10513.847918272
ontime5	10513.847898364
ontime6	10513.847918272
ontime7	10513.847898364
ontime8	10510.606838465
l1events	576336

2.1.4 Events

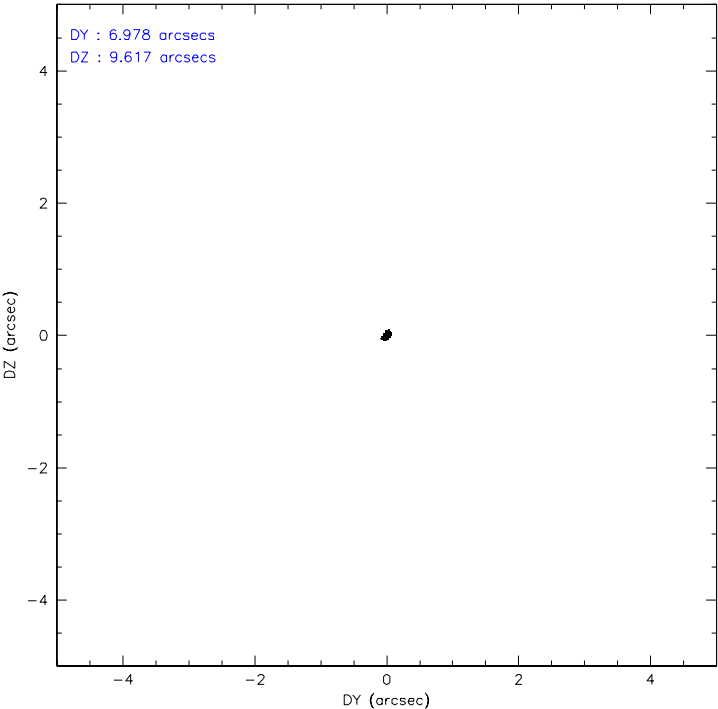
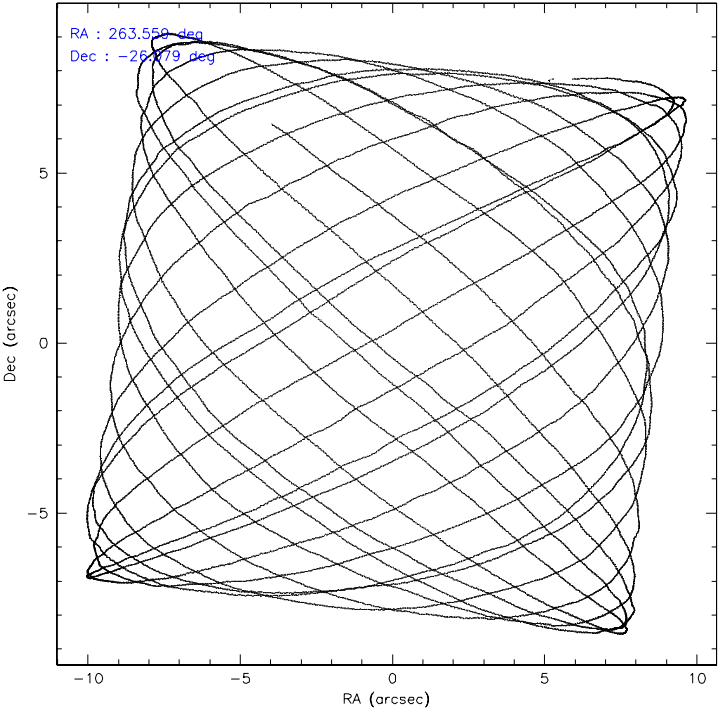
	ccd 2	ccd 3	ccd 5	ccd 6	ccd 7	ccd 8
level 1 events	80063	77345	122314	80054	110979	105581
rejected events	65771	62775	62189	64457	62272	75911
rejected %	82%	81%	50%	80%	56%	71%

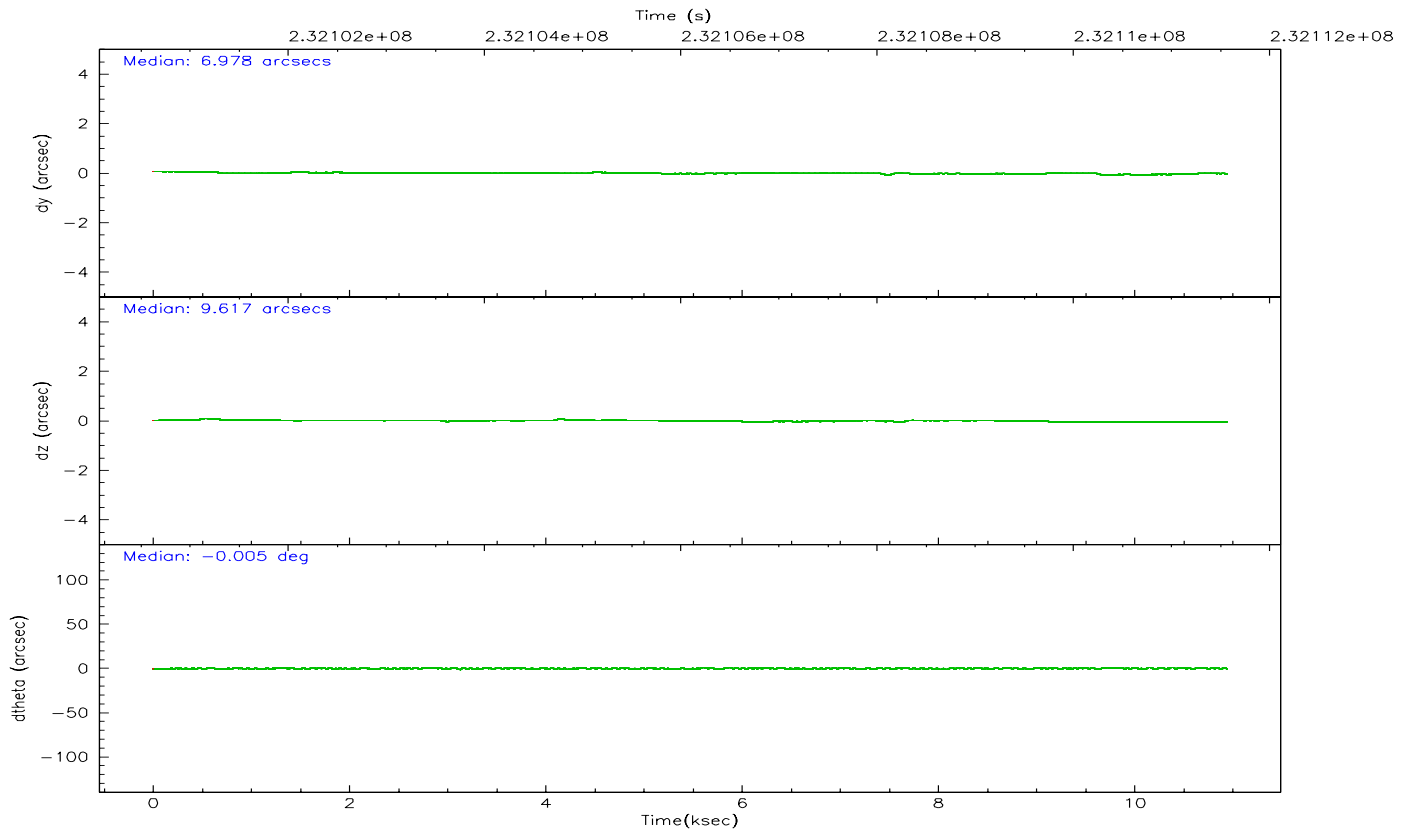
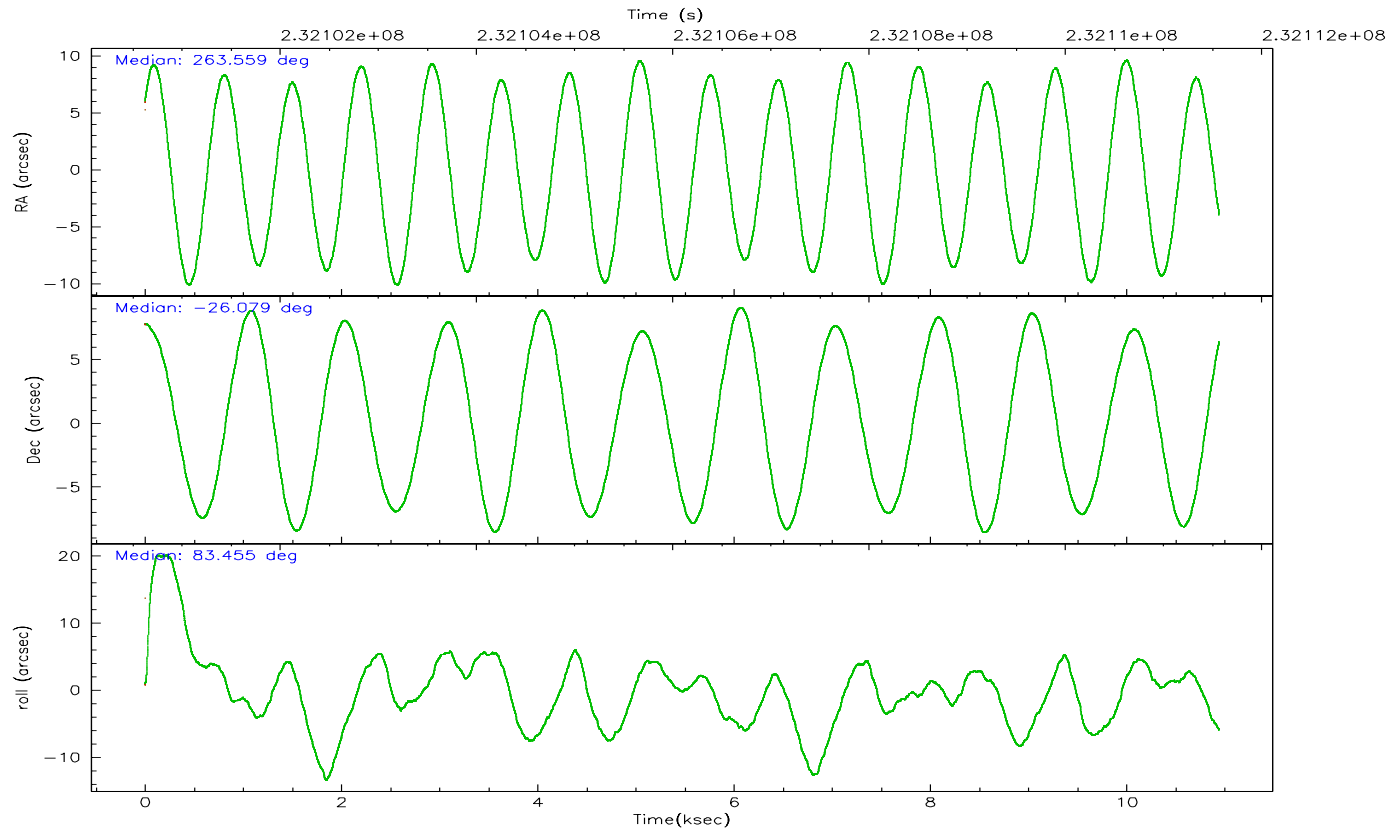
	ccd 2	ccd 3	ccd 5	ccd 6	ccd 7	ccd 8
grade 0 events	7660	7840	6398	8170	3200	12171
	9%	10%	5%	10%	2%	11%
grade 1 events	60	64	166	55	68	84
	0%	0%	0%	0%	0%	0%
grade 2 events	2663	2710	18415	3095	11597	5890
	3%	3%	15%	3%	10%	5%
grade 3 events	1021	1020	1413	1027	2487	2819
	1%	1%	1%	1%	2%	2%
grade 4 events	981	985	1347	964	2387	2585
	1%	1%	1%	1%	2%	2%
grade 5 events	2848	3416	5415	3394	6352	4371
	3%	4%	4%	4%	5%	4%
grade 6 events	1977	2021	32601	2350	29065	6244
	2%	2%	26%	2%	26%	5%
grade 7 events	62853	59289	56559	60999	55823	71417
	78%	76%	46%	76%	50%	67%

2.2 Compared Parameters

Parameter	Planned	Actual	Parameter	Planned	Actual
Instrument	ACIS	ACIS	Obspar format version number	6	6
Detector	ACIS-235678	ACIS-235678	Obspar file type	PREDICTED	ACTUAL
Grating	NONE	NONE	Obspar update status	NONE	UPDATED
Data mode	FAINT	FAINT	On-chip summing requested	N	N
Observation mode	POINTING	POINTING	Subarray requested	NONE	NONE
Pointing RA	263.571780	263.5593502092922	Alternating exposures requested	N	N
Pointing Dec	-26.104122	-26.07931829875938	Primary exposure time	0.000000	3.2
Pointing Roll	83.306835	83.45798505799254			
SIM focus pos (mm)	-0.684267	-0.6828225247311905			
SIM defocus (mm)	0	0.001444936568705701			
SIM translation stage pos (mm)	-190.132523	-190.1400660498719			
SIM translation stage offset (mm)	0	0.00754346686406393			
Observation start time	232100812.184000	232100280.79338			
Observation start date	2005-05-10T08:25:48	2005-05-10T08:18:00			
Observation end time	232111566.184000	232111789.4939			
Observation end date	2005-05-10T11:25:02	2005-05-10T11:29:49			
Read mode	TIMED	TIMED			

2.3 Aspect



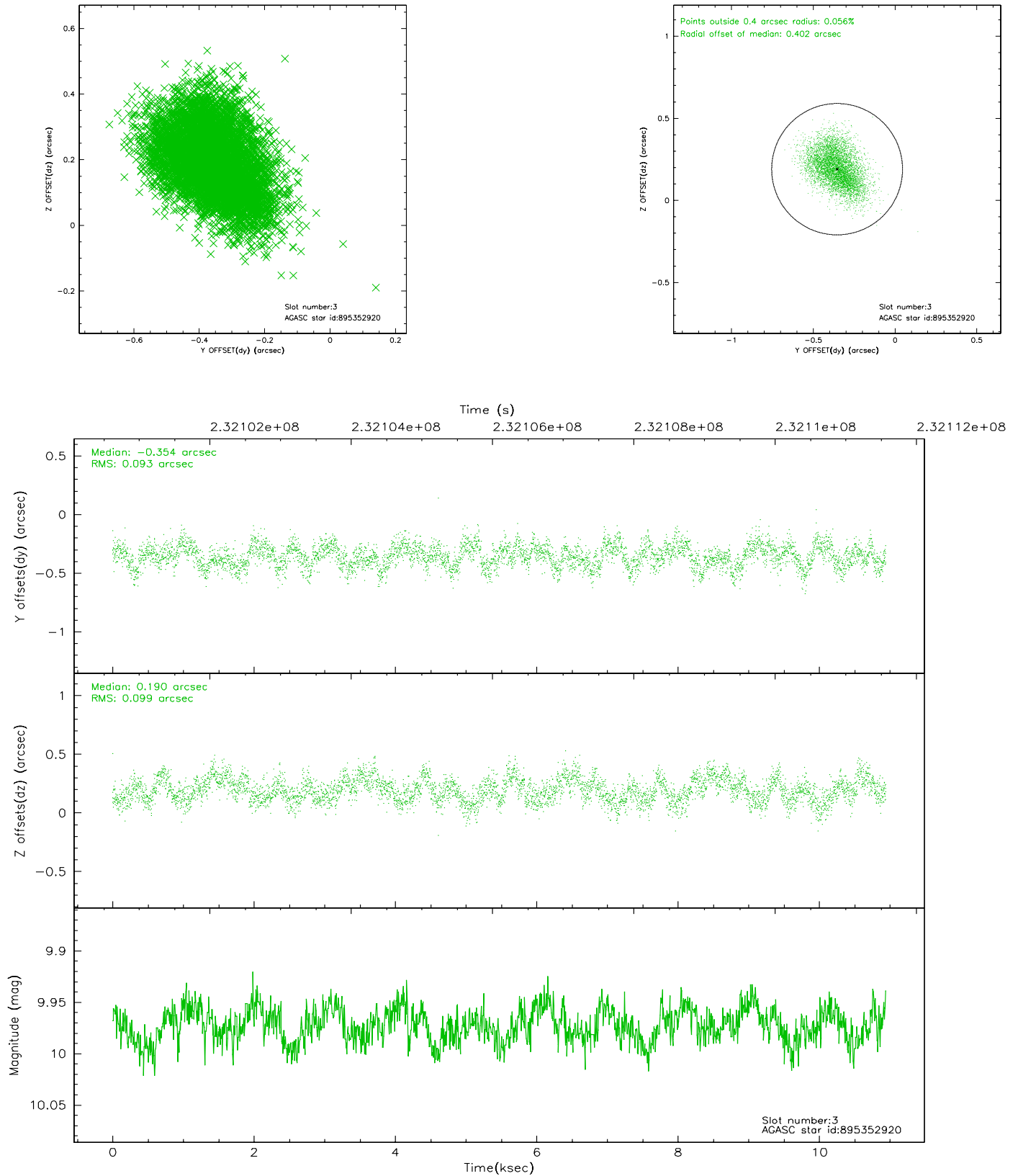


Slot Statistics

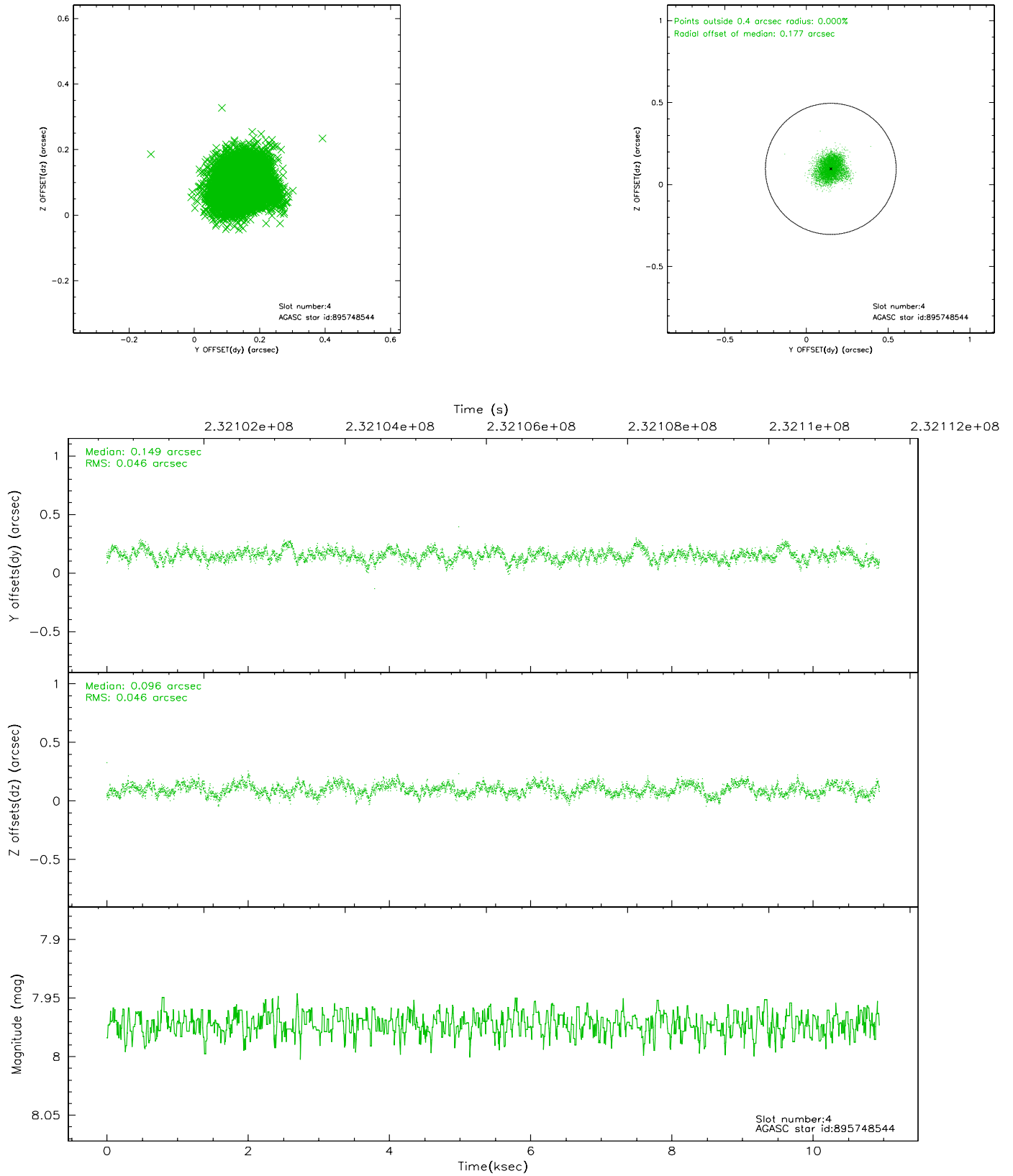
slot	status	id	mag	n_pts	med_dy	med_dz	dr1	dr2	ra	dec	mean_y	mean_z
0	FID	ACIS-S-2	7.10	2670	-0.043	-0.020	0.007	0.011	0.000000	0.000000	-759.74	-1730.88
1	FID	ACIS-S-4	7.21	2670	0.064	0.026	0.005	0.009	0.000000	0.000000	2153.40	177.20
2	FID	ACIS-S-5	7.24	2670	-0.052	0.002	0.006	0.011	0.000000	0.000000	-1812.02	171.33
3	GUIDE	895352920	9.97	5337	-0.354	0.190	0.145	0.232	264.217496	-25.713600	1635.31	-1916.28
4	GUIDE	895748544	7.97	5340	0.149	0.096	0.070	0.111	263.692859	-26.739685	-2226.39	-653.52
5	GUIDE	895881920	9.41	5335	0.215	-0.024	0.093	0.150	263.913988	-26.630022	-1753.21	-1314.67
6	GUIDE	895223200	10.45	5332	0.062	-0.383	0.189	0.310	262.834279	-26.055766	-112.11	2387.66
7	GUIDE	895353104	10.18	5334	-0.062	0.109	0.229	0.371	263.748270	-25.444684	2423.59	-291.66

2.4 Star Slots

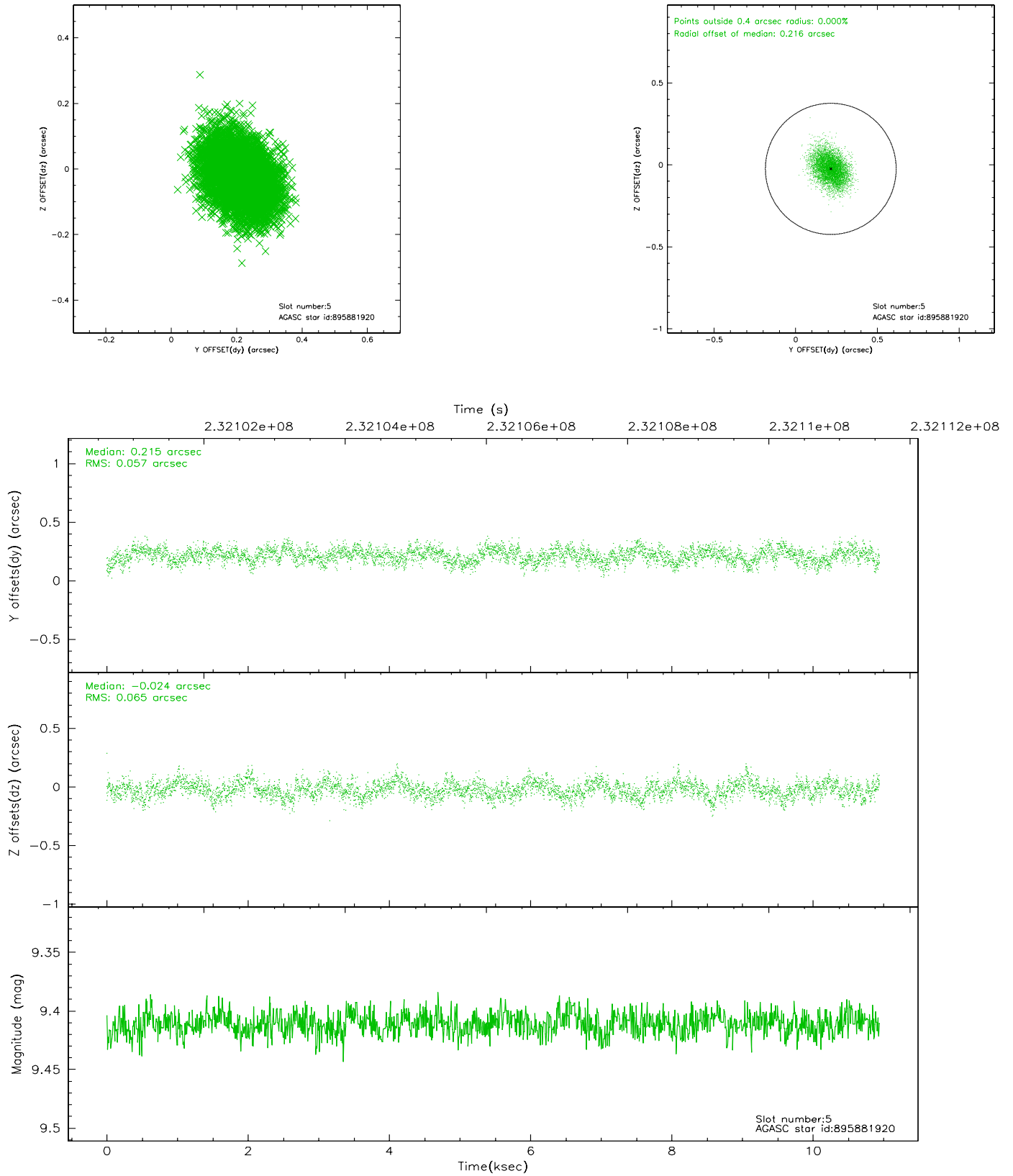
2.4.1 Slot 3



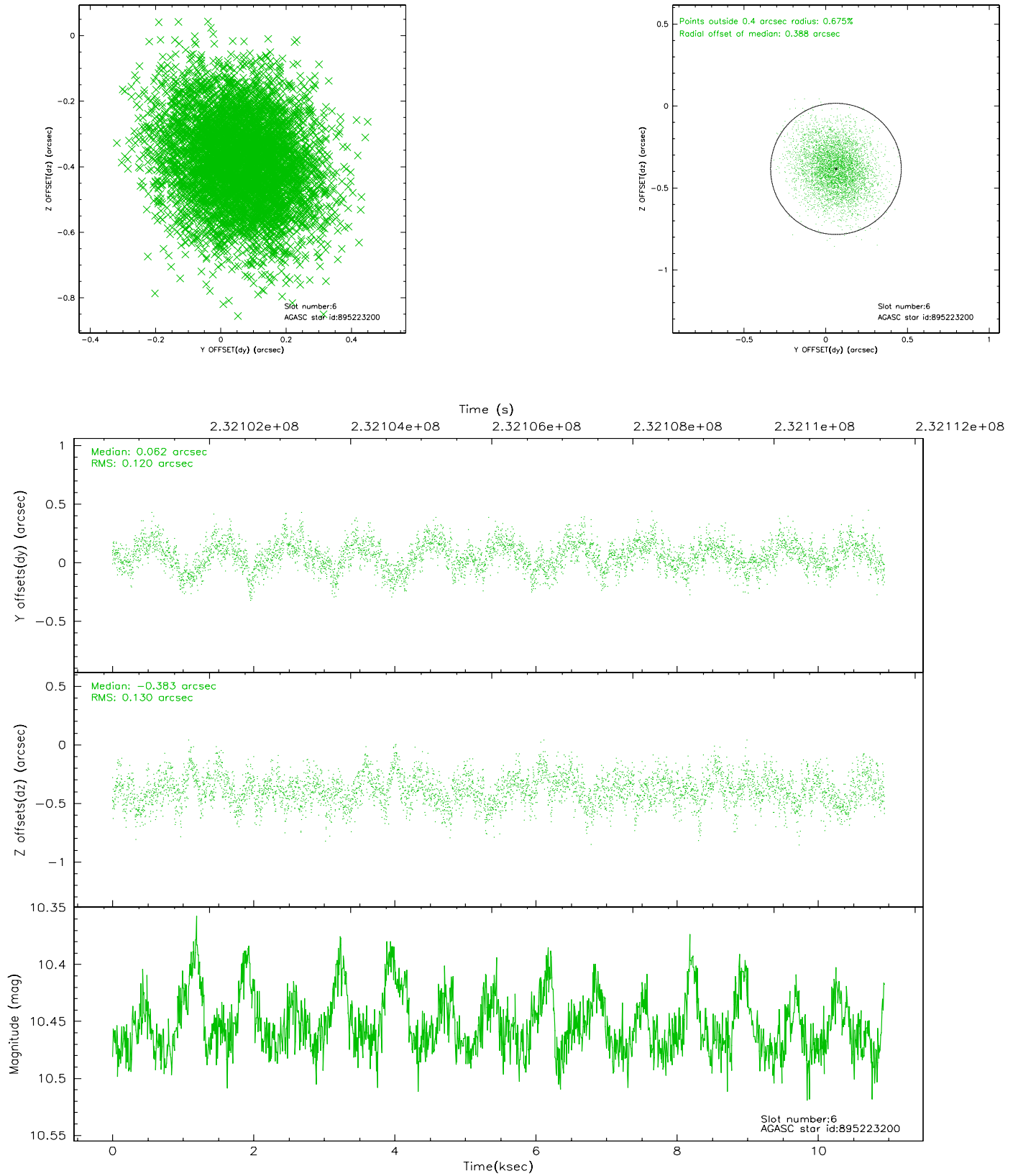
2.4.2 Slot 4



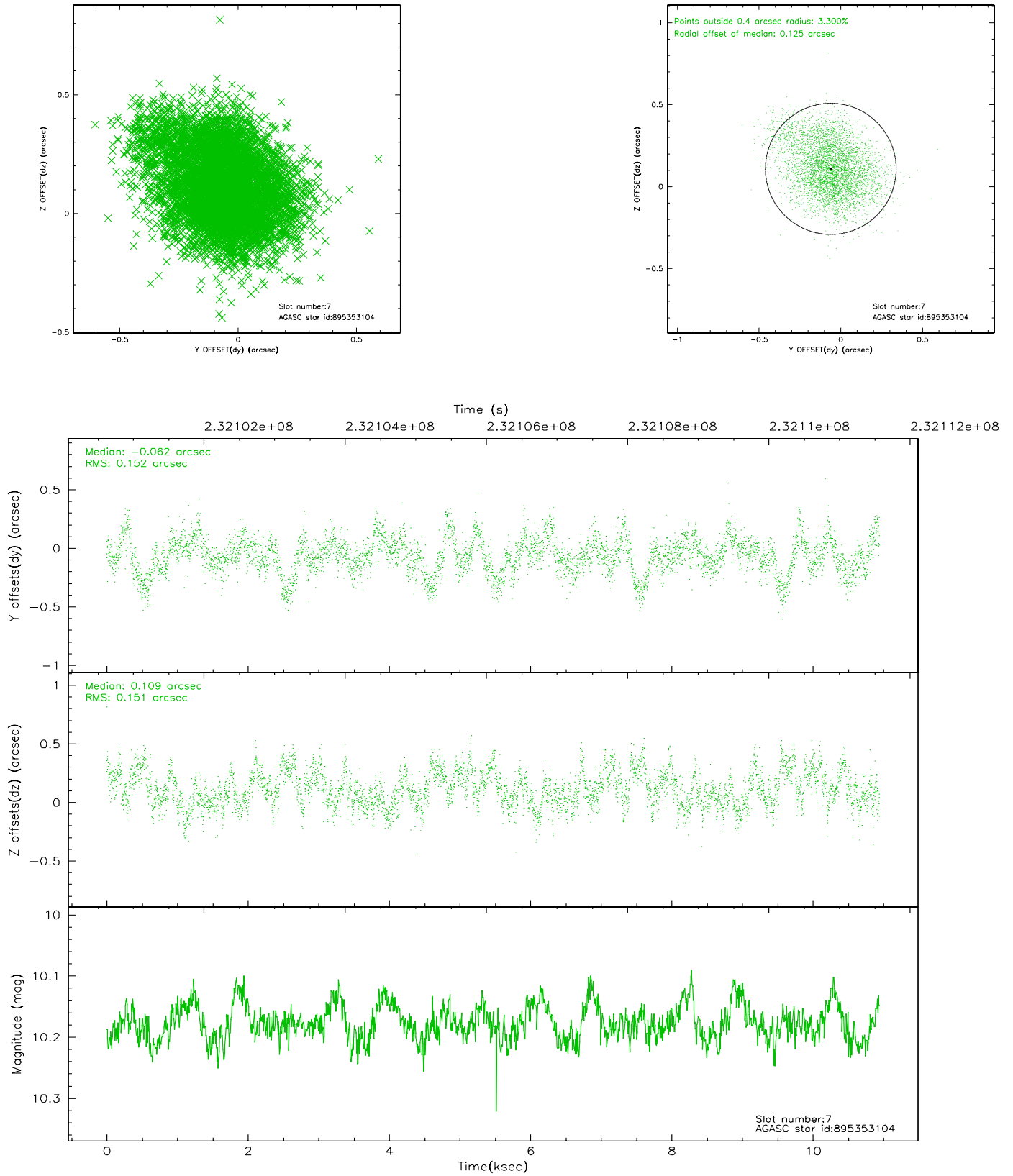
2.4.3 Slot 5



2.4.4 Slot 6

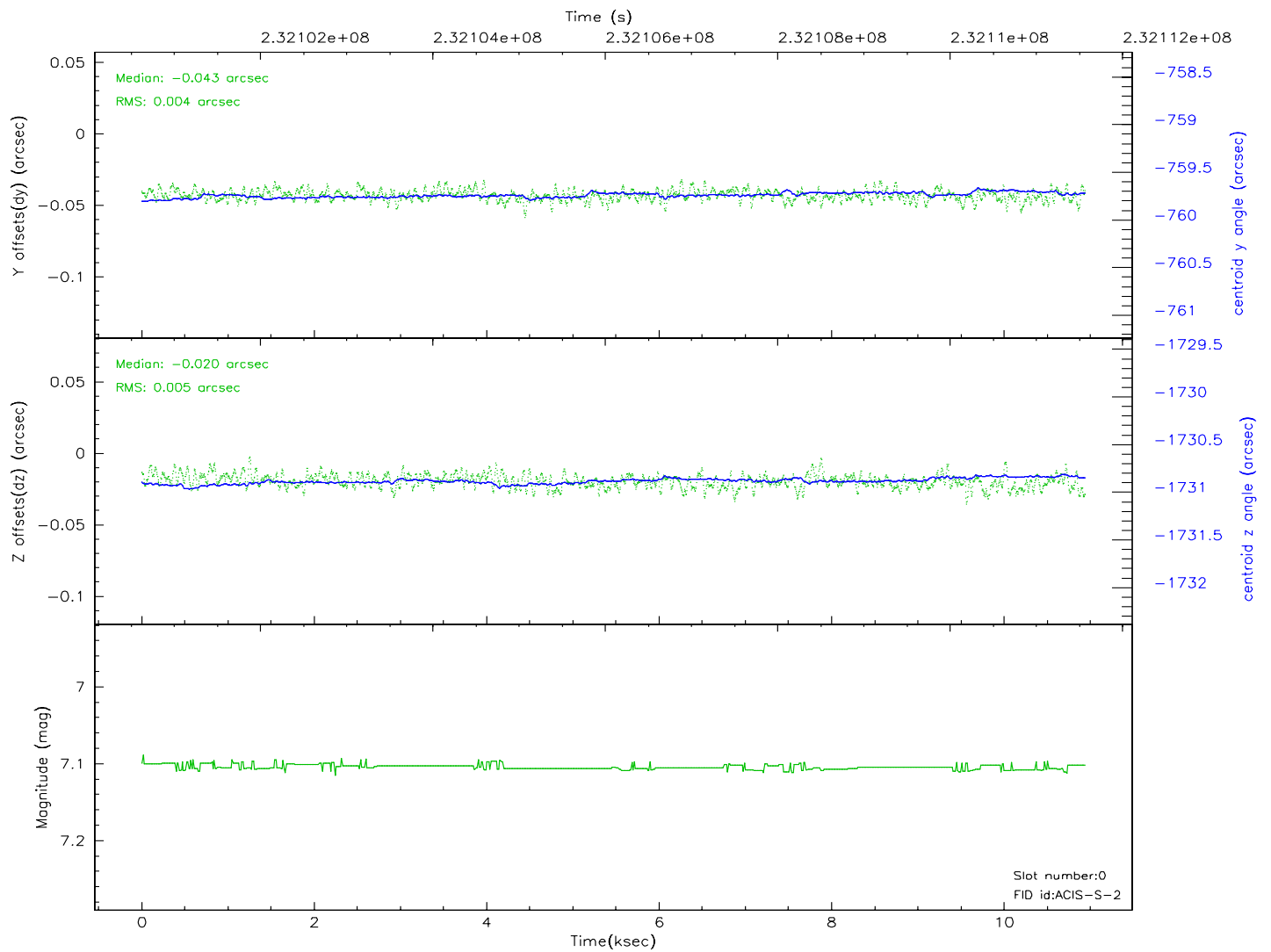
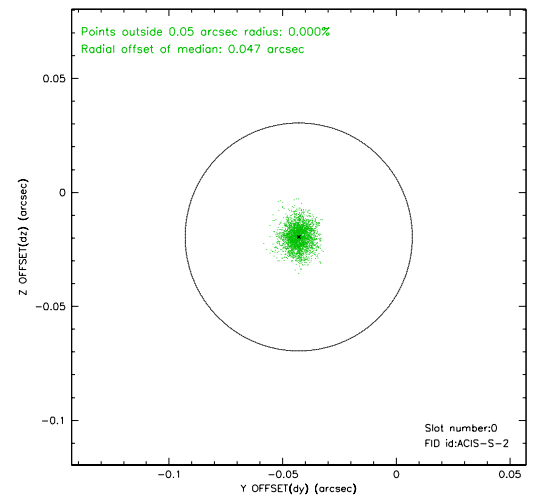
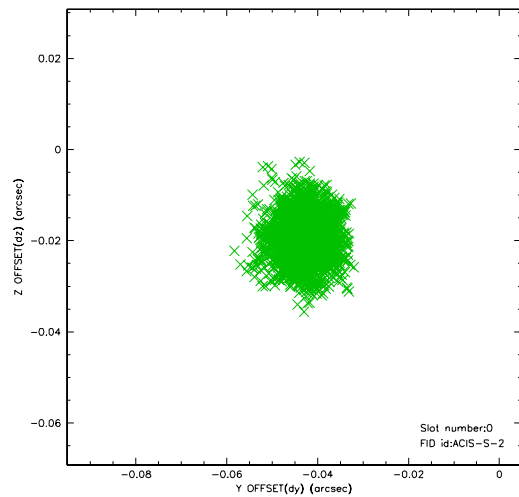


2.4.5 Slot 7

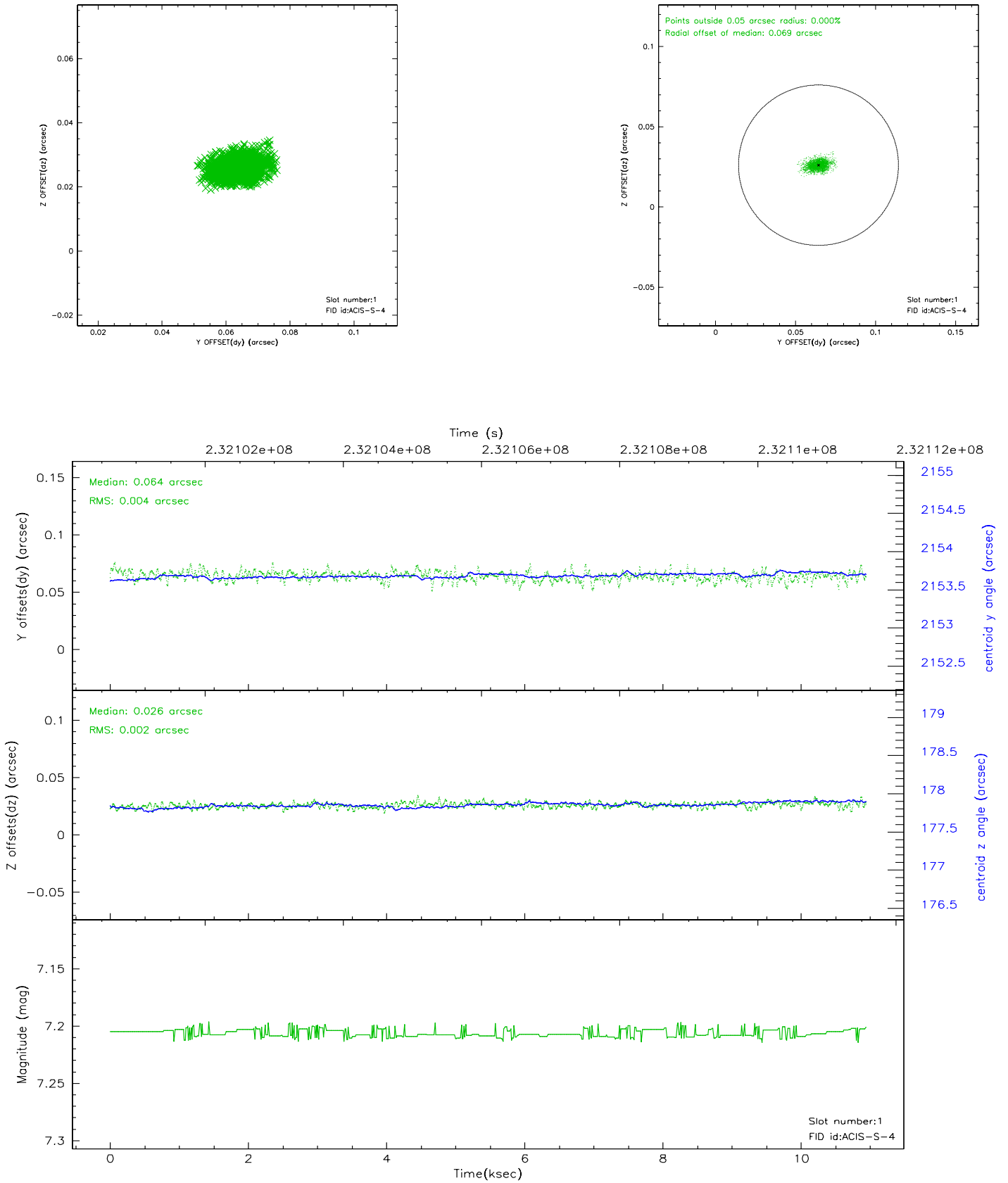


2.5 FID Slots

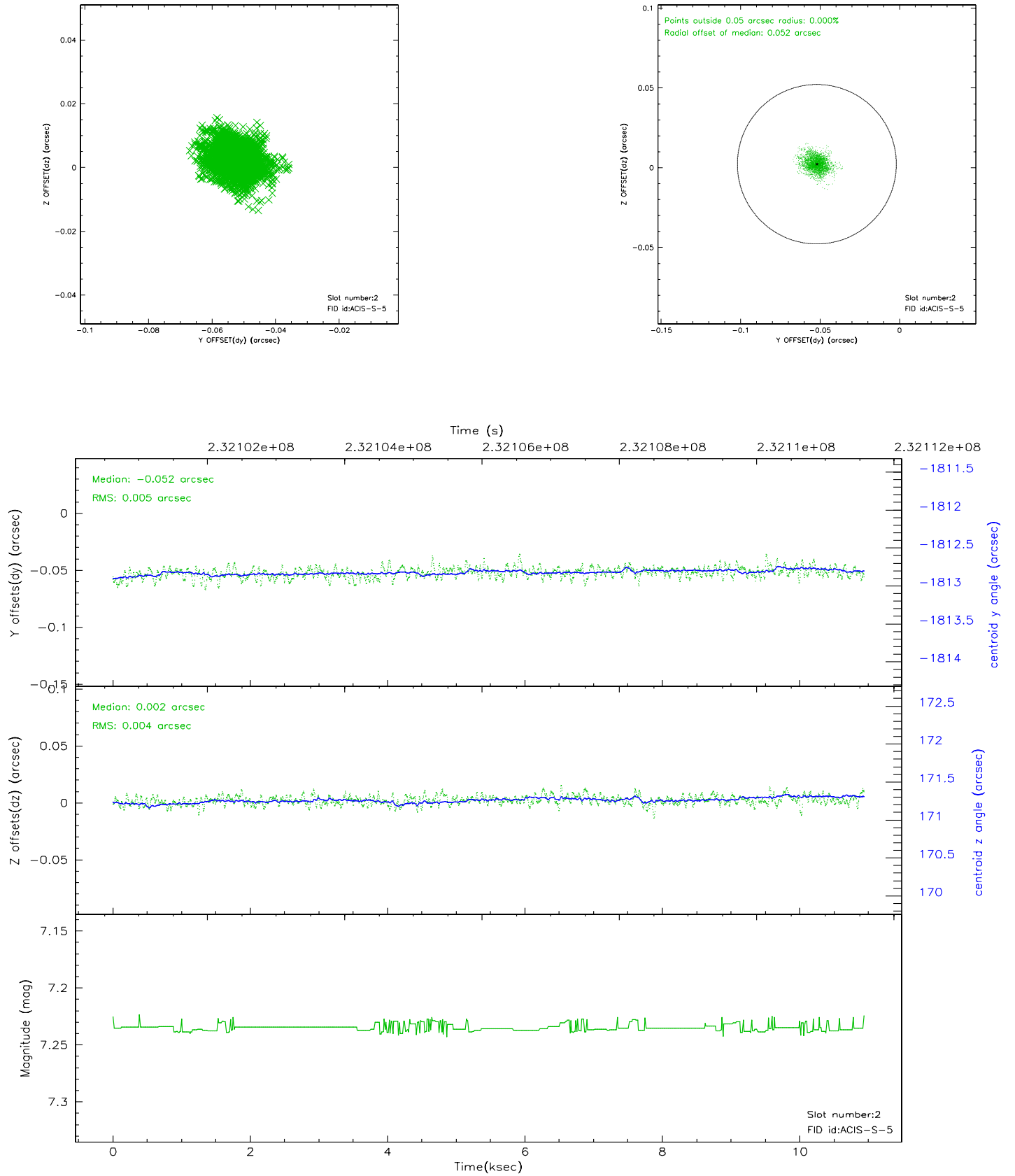
2.5.1 Slot 0



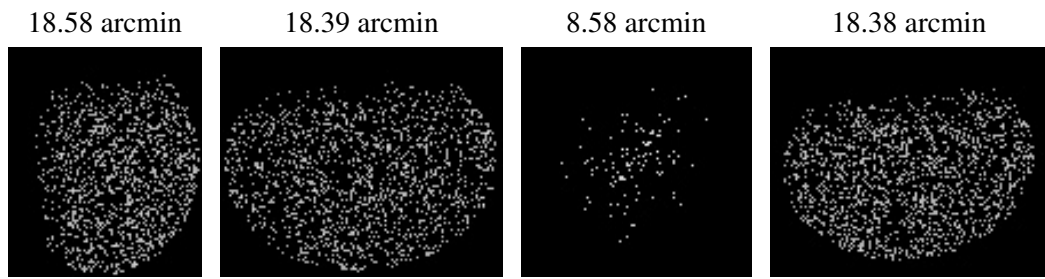
2.5.2 Slot 1



2.5.3 Slot 2



3 Point Sources



A Summary

A.1 Status

V&V Scientist	Beth Sundheim
V&V Date (YYYY-MM-DD)	2006.03.03
V&V Edition	1
V&V Disposition and Status	OK
V&V Charge Time	10.50879

A.2 Comments