

# V&V Reference Report

## L2 ASCDS Version : 7.6.7

Observation 6259 - L2 Version 002  
Chandra X-Ray Center

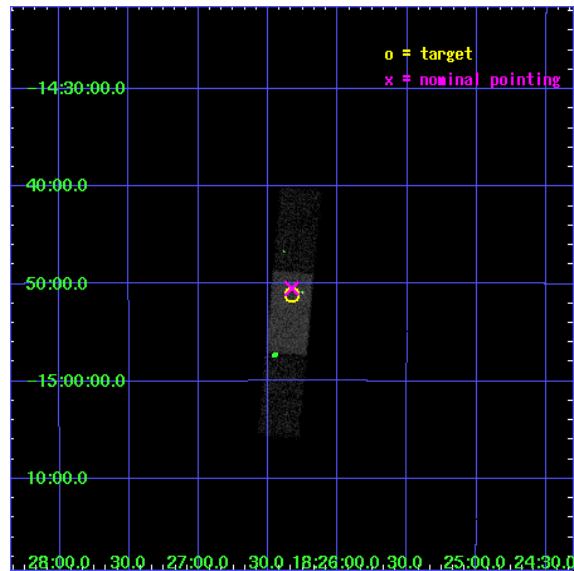
L2 Processing Date: Feb 28 2006

## Contents

<b>1</b>	<b>Front</b>	<b>2</b>
<b>2</b>	<b>OBI</b>	<b>3</b>
2.1	OBI . . . . .	3
2.1.1	Images . . . . .	3
2.1.2	Bias . . . . .	3
2.1.3	Parameters . . . . .	4
2.1.4	Events . . . . .	4
2.2	Compared Parameters . . . . .	5
2.3	Aspect . . . . .	6
2.4	Star Slots . . . . .	9
2.4.1	Slot 3 . . . . .	9
2.4.2	Slot 4 . . . . .	10
2.4.3	Slot 5 . . . . .	11
2.4.4	Slot 6 . . . . .	12
2.4.5	Slot 7 . . . . .	13
2.5	FID Slots . . . . .	14
2.5.1	Slot 0 . . . . .	14
2.5.2	Slot 1 . . . . .	15
2.5.3	Slot 2 . . . . .	16
<b>3</b>	<b>Point Sources</b>	<b>17</b>
<b>A</b>	<b>Summary</b>	<b>18</b>
A.1	Status . . . . .	18
A.2	Comments . . . . .	18

# 1 Front

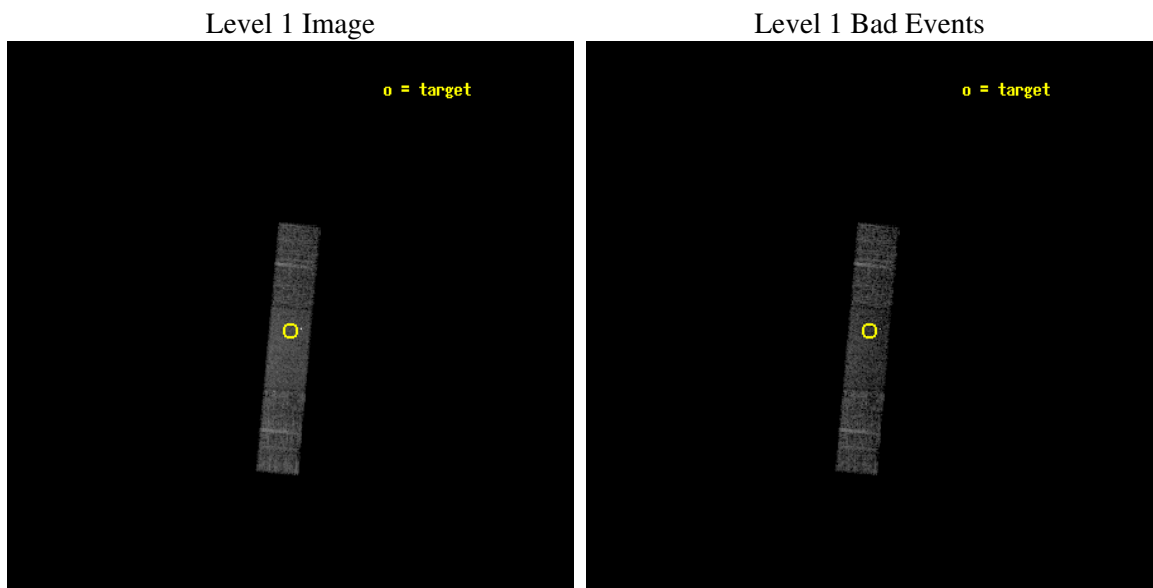
seq_num	400467
obs_id	6259
title	The nature of the gamma-ray source HESS J1826-148
observer	Mr Stefan Funk
object	HESS J1826-148
dtcycle	0
cycle	P
ra_targ	276.58125
dec_targ	-14.851222
ra_nom	276.58216153108
dec_nom	-14.841577948395
roll_nom	95.284670262537
revision	2
ontime	5169.5999807417
livetime	5040.3158784593
ontime6	5169.5999807417
ontime7	5169.5999807417
ontime8	5169.5999807417
l2events	17460



## 2 OBI

### 2.1 OBI

#### 2.1.1 Images

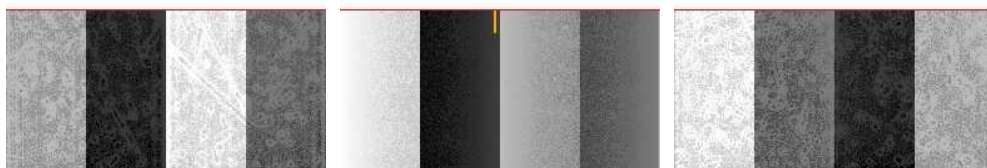


#### 2.1.2 Bias

Chip 6

Chip 7

Chip 8



### 2.1.3 Parameters

obi_num	0
ascdsver	7.6.7
caldsver	3.2.1
date	2006-02-28T21:11:14
revision	2

sched_exp_time	5000.000000
ontime	5385.8424749076
ontime6	5385.8424749076
ontime7	5385.8424749076
ontime8	5385.8424749076
l1events	80870

### 2.1.4 Events

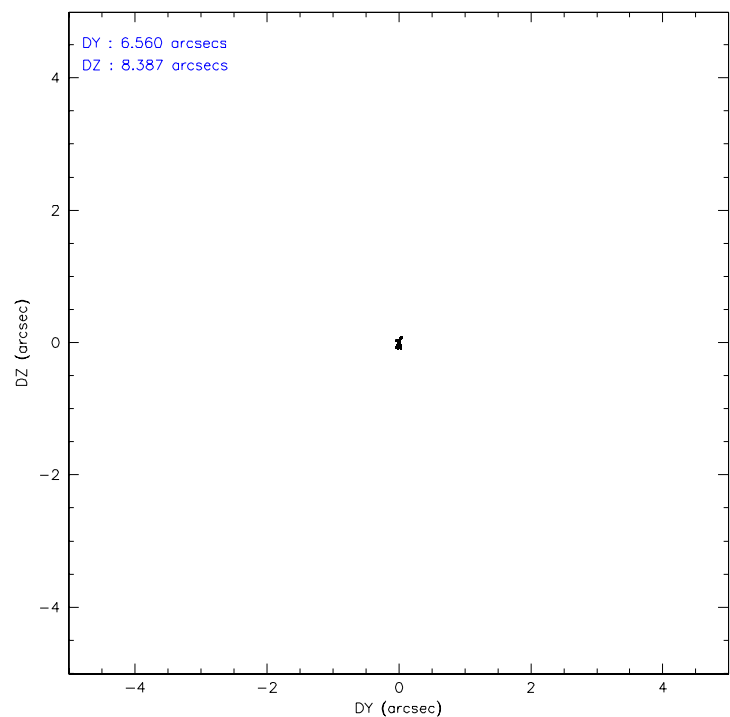
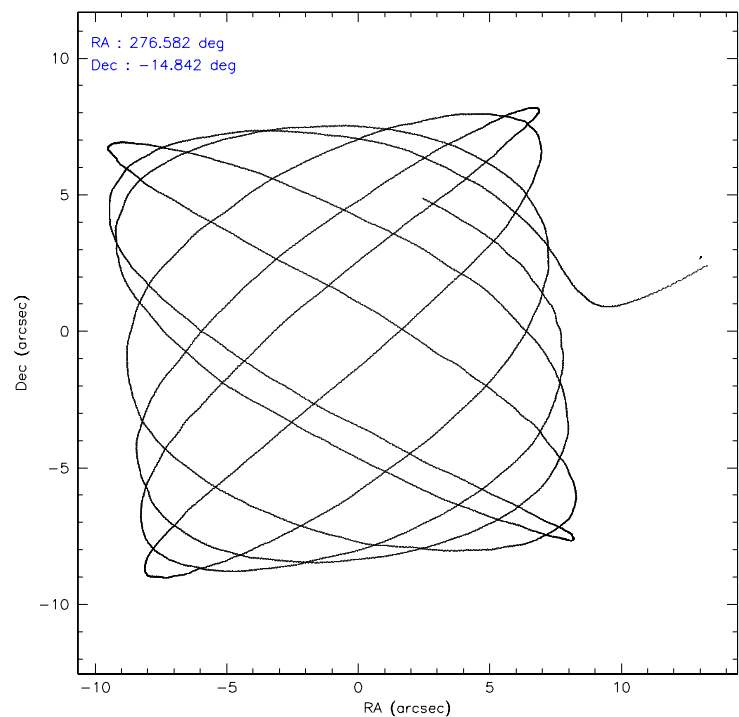
	<b>ccd 6</b>	<b>ccd 7</b>	<b>ccd 8</b>
level 1 events	22083	30269	28518
rejected events	19388	17368	22348
rejected %	87%	57%	78%

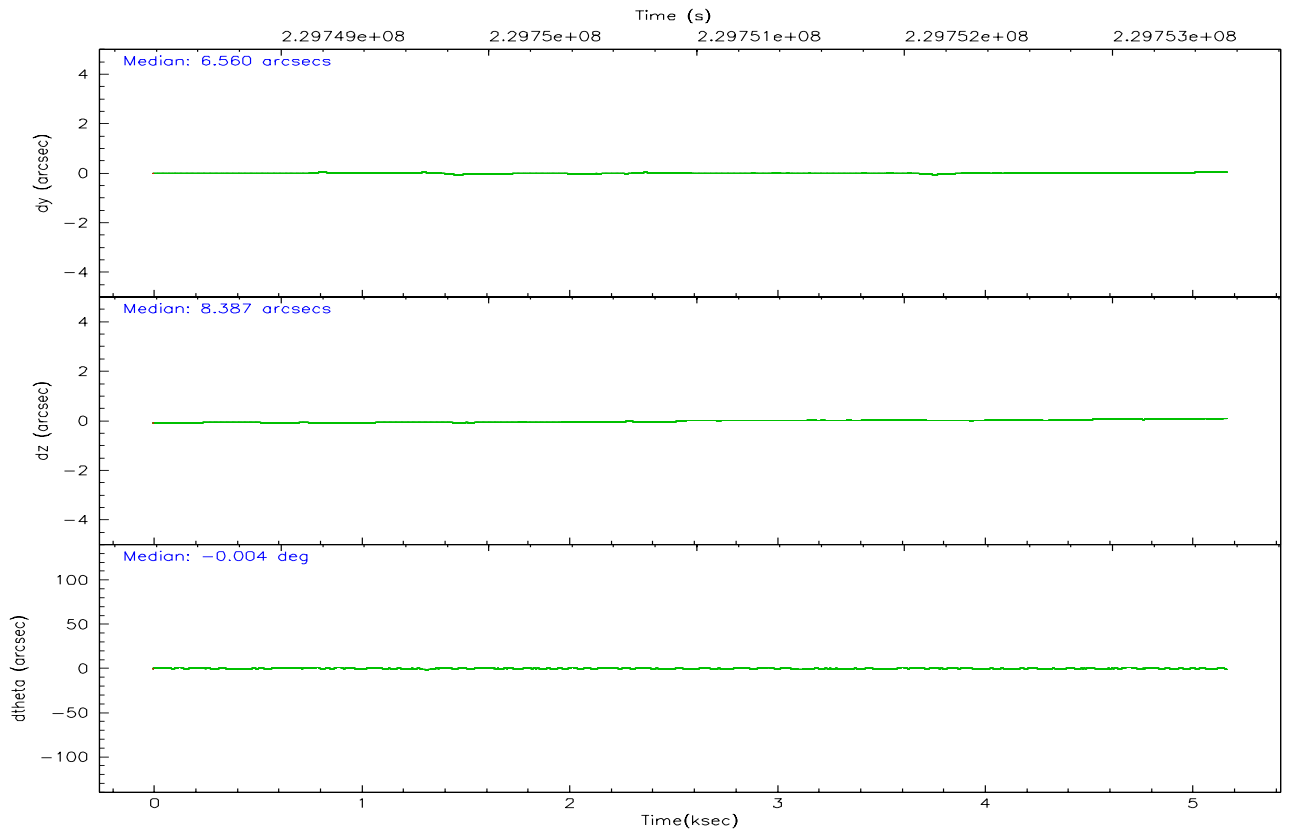
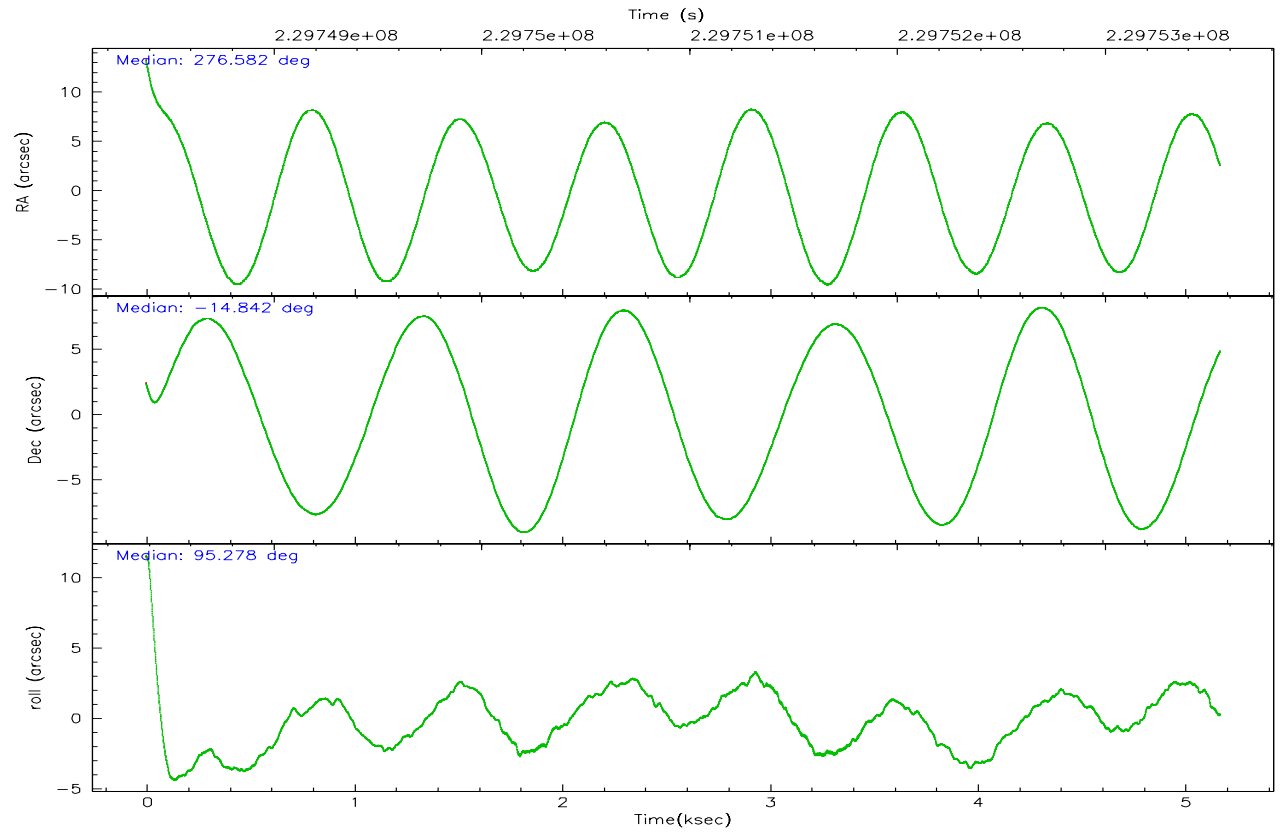
	<b>ccd 6</b>	<b>ccd 7</b>	<b>ccd 8</b>
grade 0 events	1113	1138	1989
	5%	3%	6%
grade 1 events	9	36	21
	0%	0%	0%
grade 2 events	557	3167	1431
	2%	10%	5%
grade 3 events	291	982	670
	1%	3%	2%
grade 4 events	322	987	583
	1%	3%	2%
grade 5 events	891	2181	1197
	4%	7%	4%
grade 6 events	521	7124	1771
	2%	23%	6%
grade 7 events	18379	14654	20856
	83%	48%	73%

## 2.2 Compared Parameters

Parameter	Planned	Actual	Parameter	Planned	Actual
Instrument	ACIS	ACIS	Obspar format version number	6	6
Detector	ACIS-678	ACIS-678	Obspar file type	PREDICTED	ACTUAL
Grating	NONE	NONE	Obspar update status	NONE	UPDATED
Data mode	VFAINT	VFAINT	On-chip summing requested	N	N
Observation mode	POINTING	POINTING	Subarray requested	CUSTOM	1/2
Pointing RA	276.598672	276.5821615310835	Subarray start row	1	1
Pointing Dec	-14.863595	-14.84157794839529	Subarray row count	512	512
Pointing Roll	95.132238	95.28467026253743	Alternating exposures requested	N	N
SIM focus pos (mm)	-0.684267	-0.6828225247311905	Primary exposure time	0.000000	1.6
SIM defocus (mm)	0	0.001444936568705701			
SIM translation stage pos (mm)	-183.992523	-183.9875365069546			
SIM translation stage offset (mm)	-6.14	-6.144986076053243			
Observation start time	229748551.184000	229747702.73634			
Observation start date	2005-04-13T03:01:27	2005-04-13T02:48:22			
Observation end time	229753551.184000	229754309.37414			
Observation end date	2005-04-13T04:24:47	2005-04-13T04:38:29			
Read mode	TIMED	TIMED			

## 2.3 Aspect





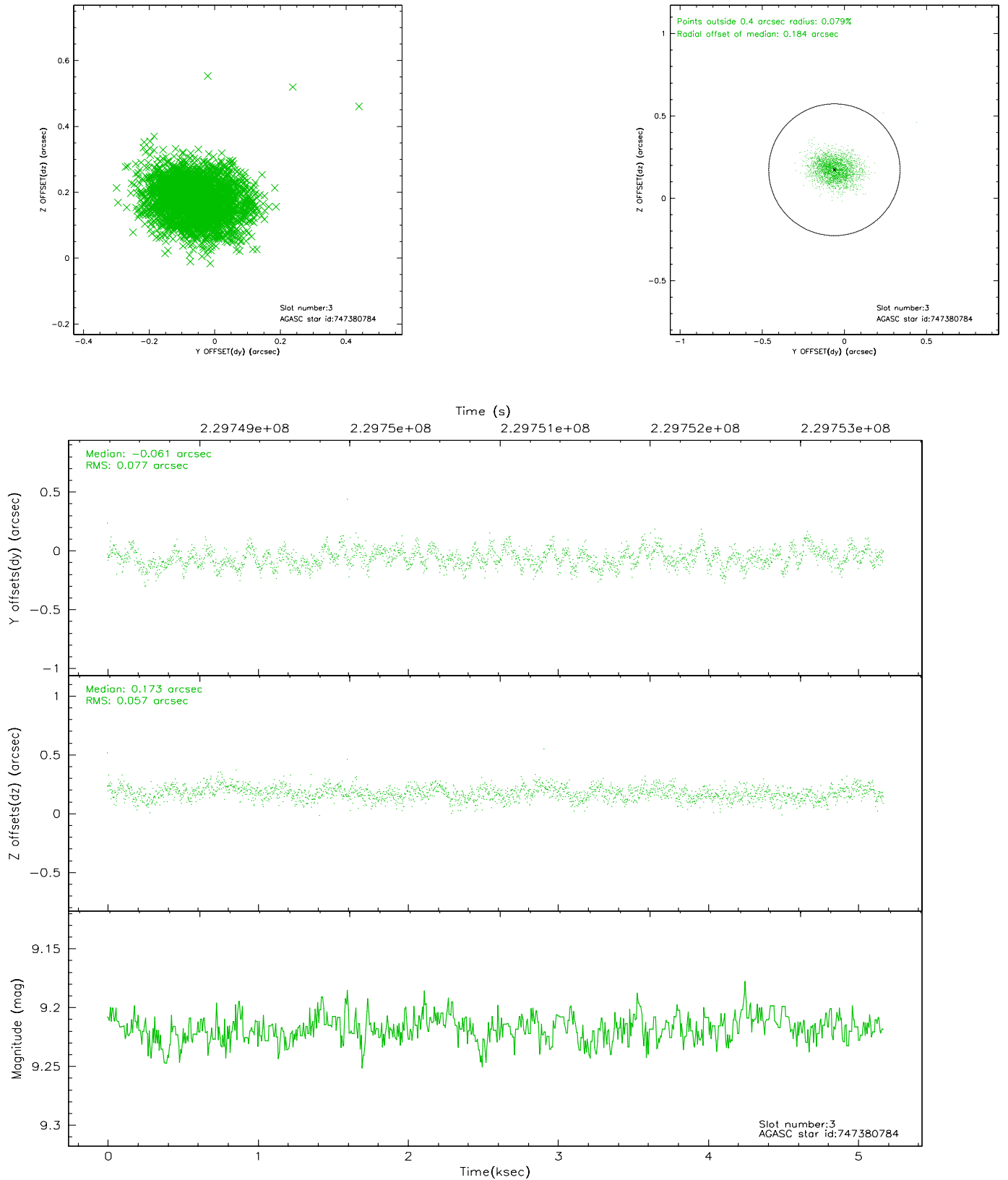
### Slot Statistics

slot	status	id	mag	n_pts	med_dy	med_dz	dr1	dr2	ra	dec	mean_y	mean_z
0	FID	ACIS-S-2	7.08	1262	-0.083	-0.050	0.006	0.012	0.000000	0.000000	-758.94	-1856.28
1	FID	ACIS-S-4	7.19	1262	0.095	0.054	0.005	0.009	0.000000	0.000000	2153.98	51.00
2	FID	ACIS-S-5	7.22	1262	-0.043	0.004	0.006	0.010	0.000000	0.000000	-1810.24	45.93
3	GUIDE	747380784	9.22	2524	-0.061	0.173	0.100	0.165	277.188264	-14.189338	2231.30	-2265.88
4	GUIDE	747394680	7.39	2524	-0.061	-0.260	0.048	0.073	276.275759	-14.649373	868.81	1050.50
5	GUIDE	747395024	7.90	2524	-0.036	0.169	0.053	0.086	277.013372	-14.660681	597.71	-1502.83
6	GUIDE	821313912	7.15	2524	0.200	0.140	0.054	0.087	276.880488	-15.373623	-1916.02	-810.71
7	GUIDE	747380456	8.59	2523	-0.045	-0.221	0.078	0.125	276.136187	-14.775528	457.34	1575.01

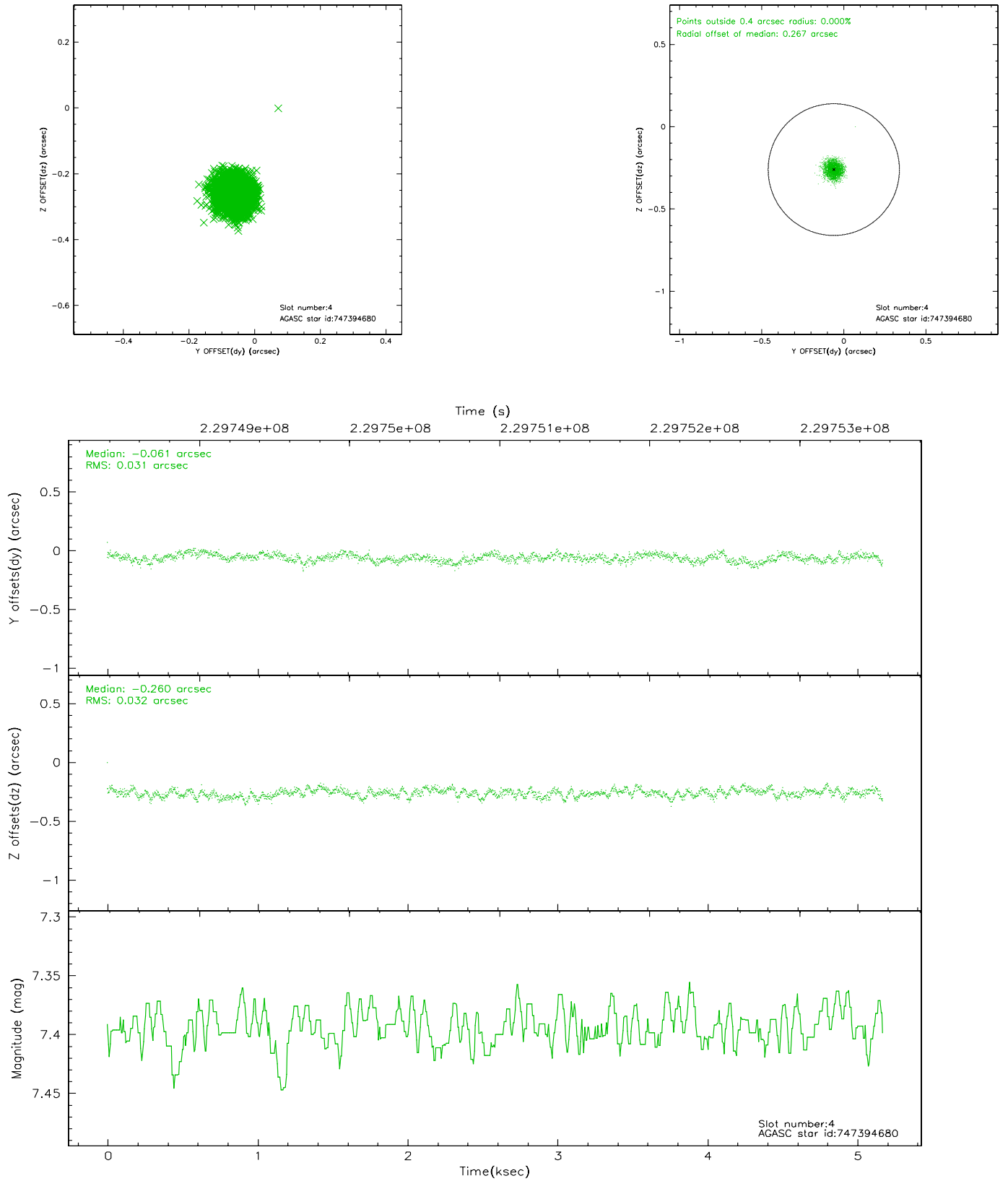


## 2.4 Star Slots

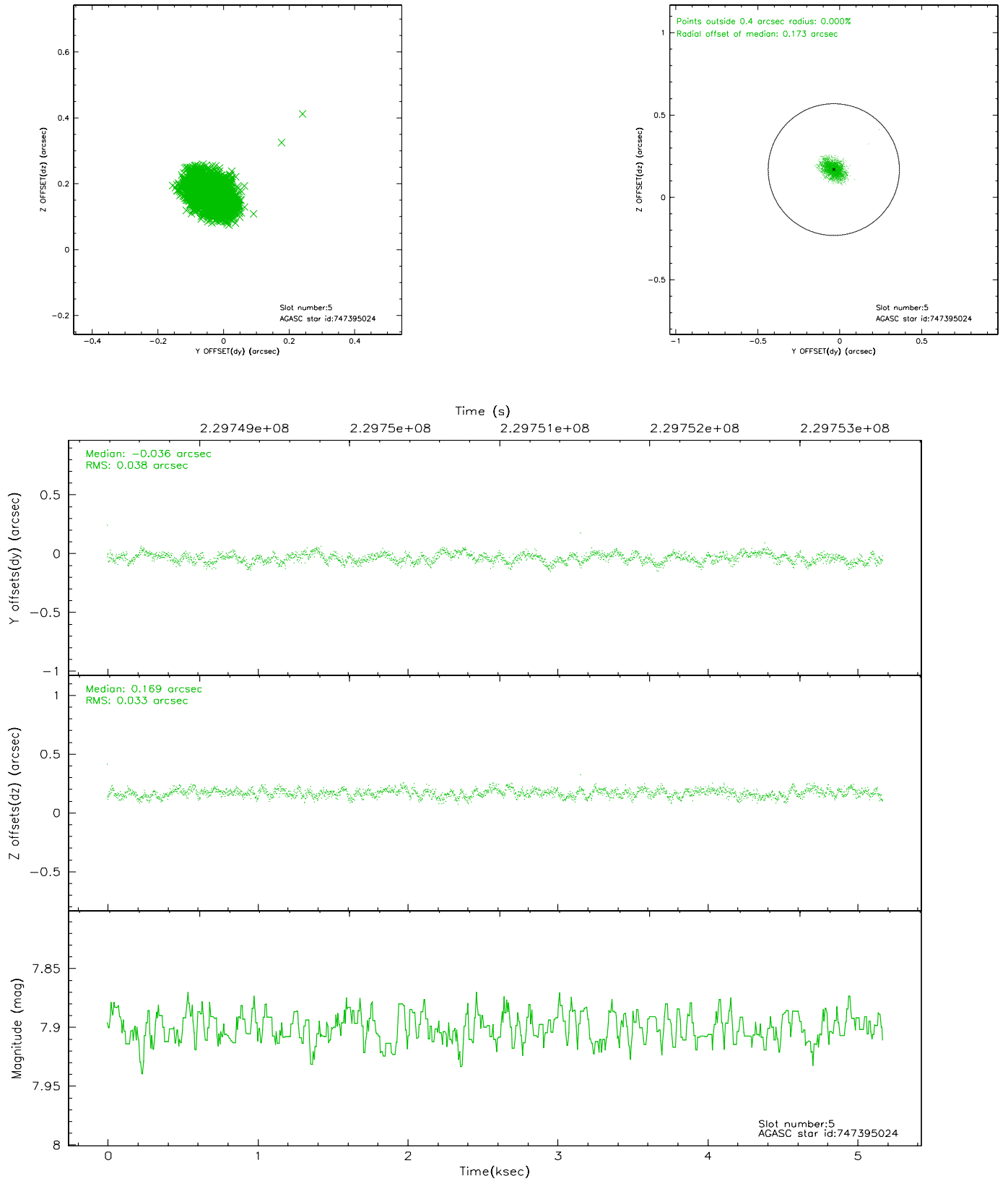
### 2.4.1 Slot 3



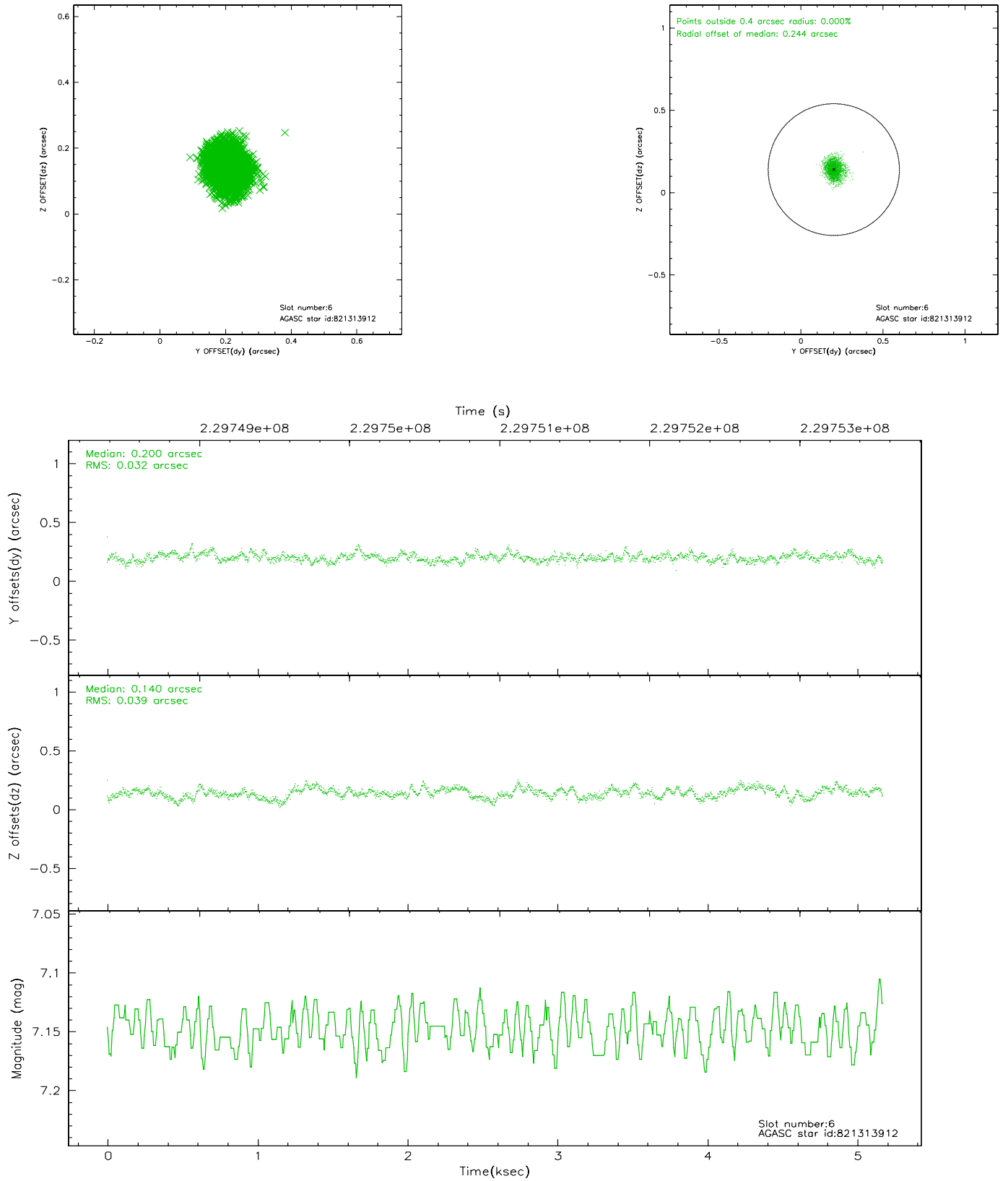
## 2.4.2 Slot 4



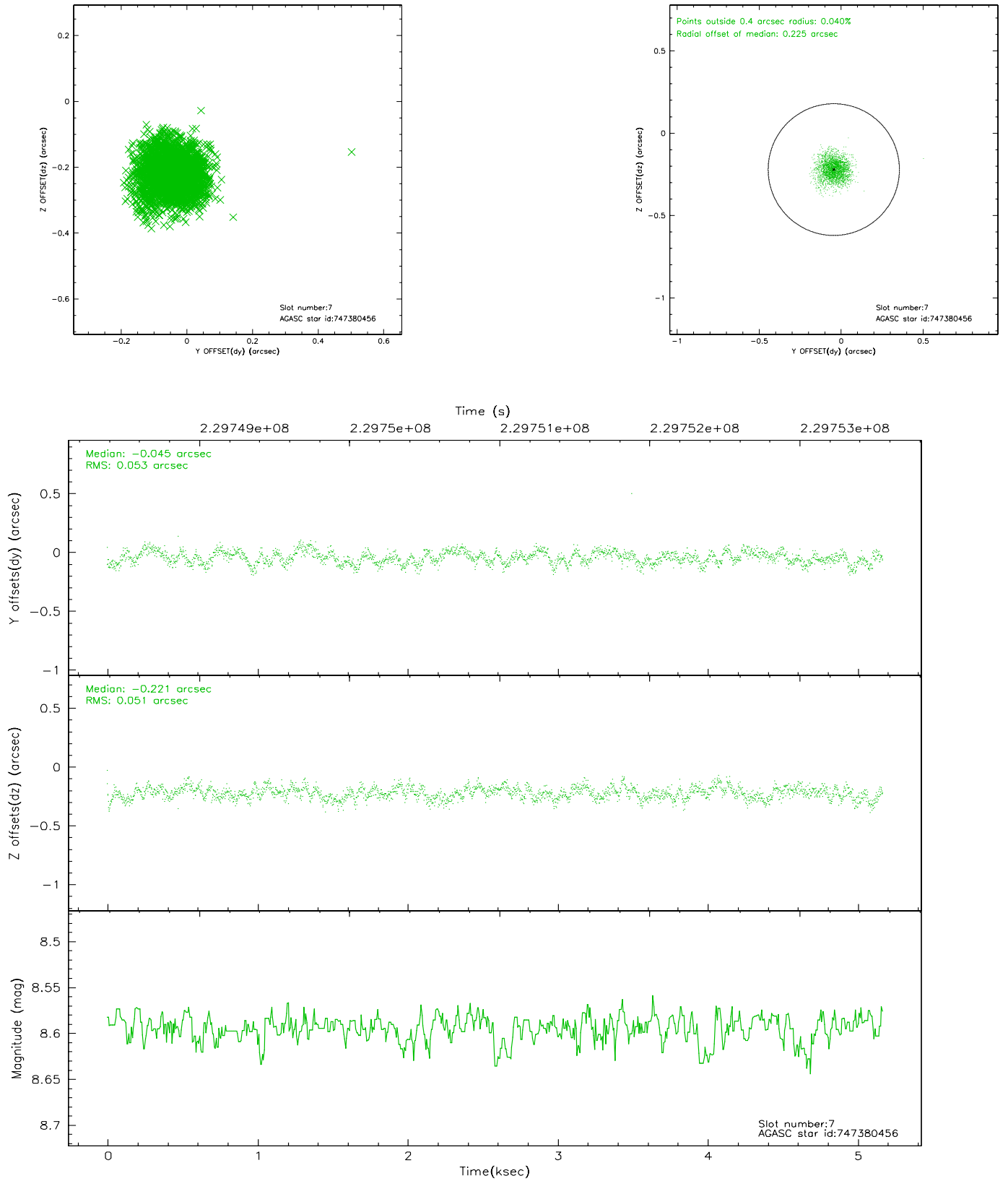
### 2.4.3 Slot 5



## 2.4.4 Slot 6

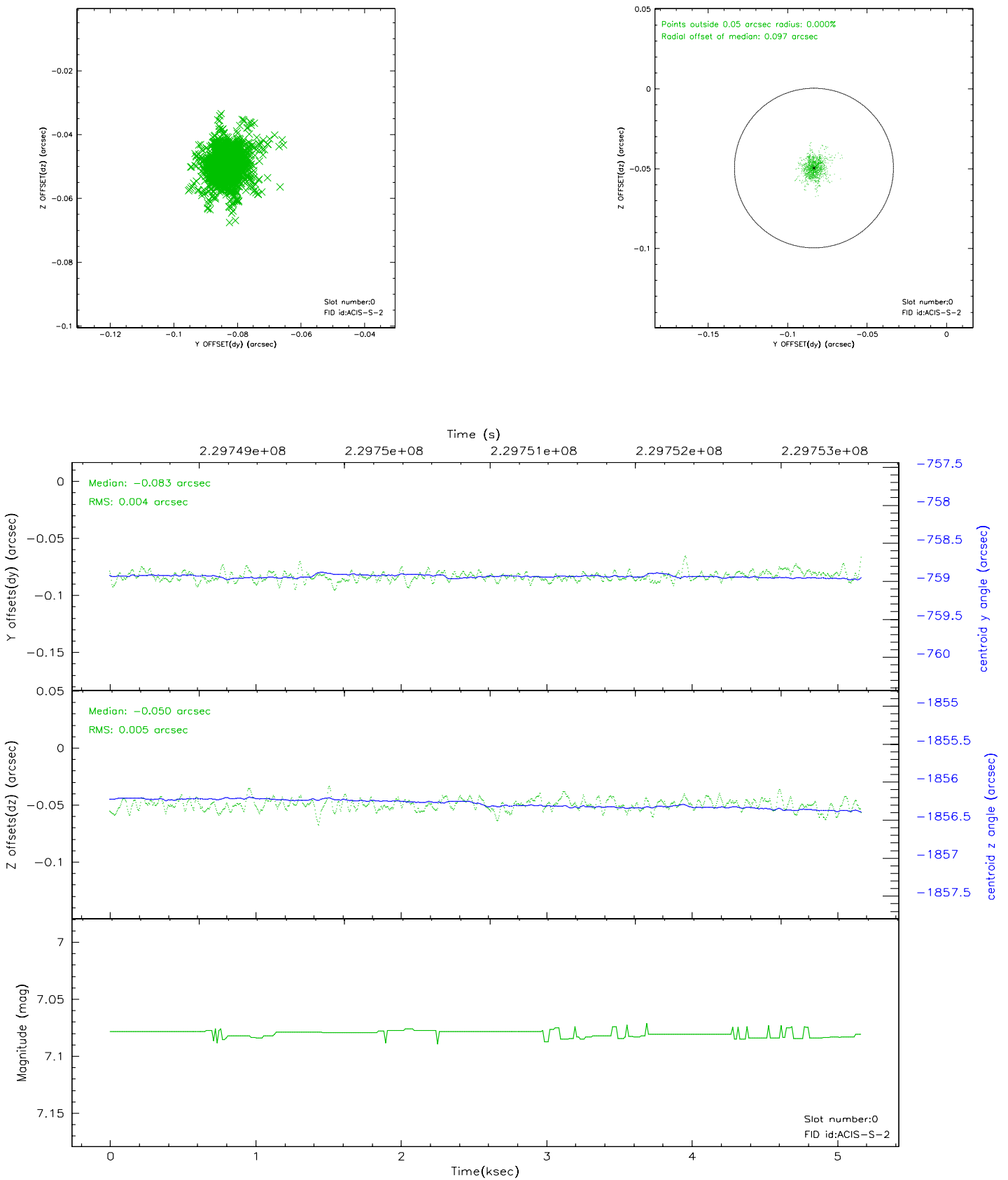


## 2.4.5 Slot 7

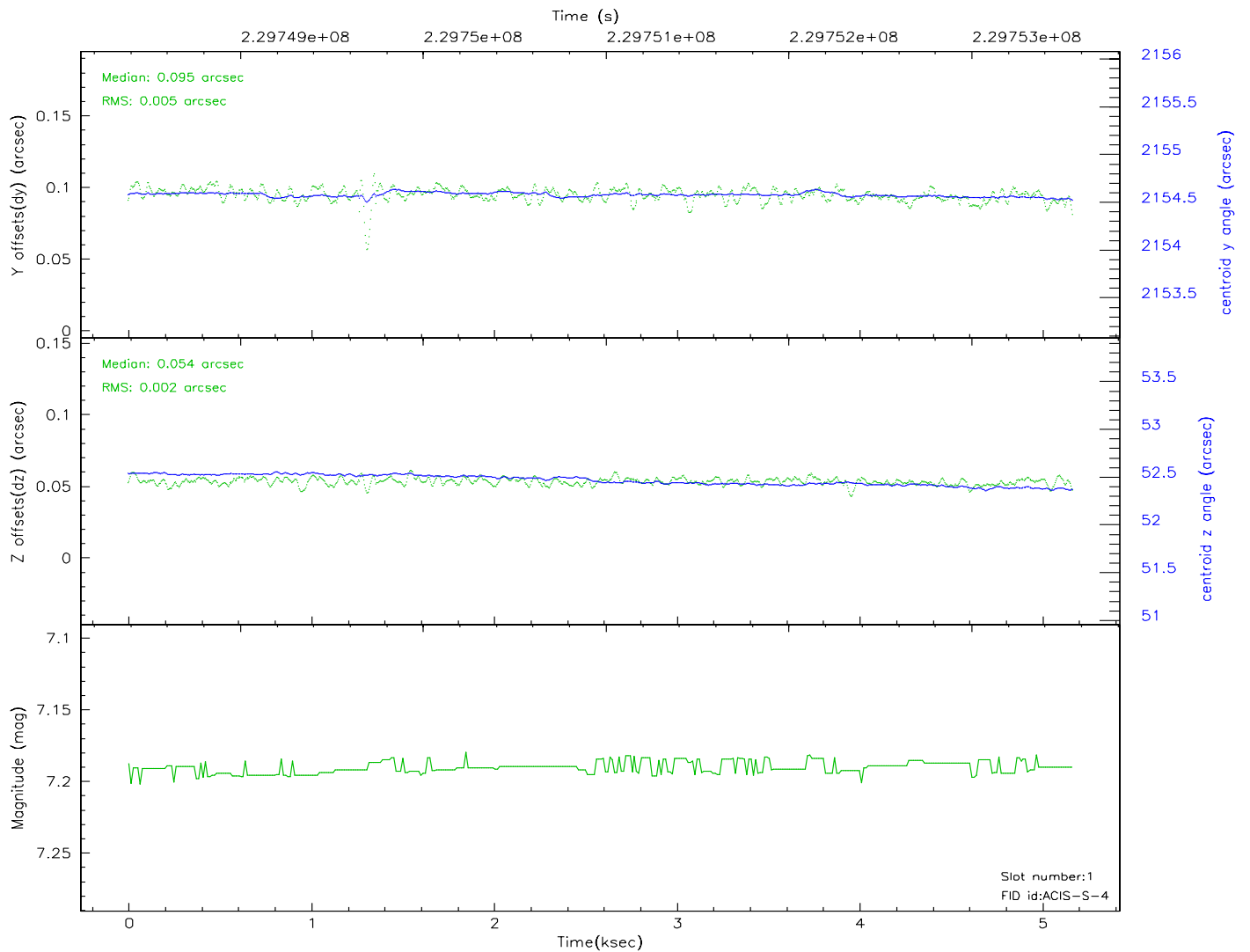
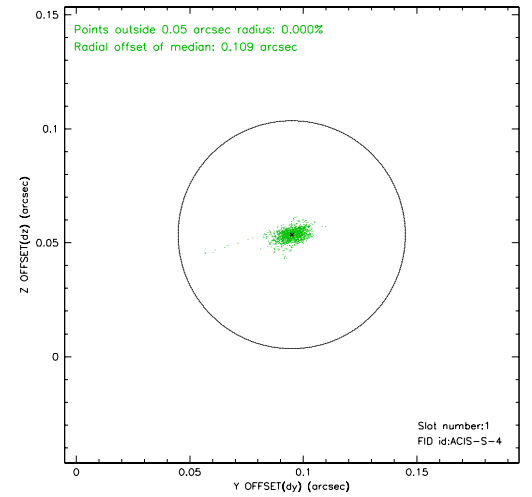
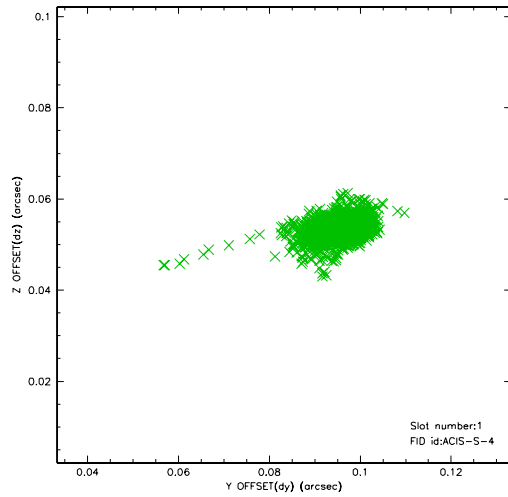


## 2.5 FID Slots

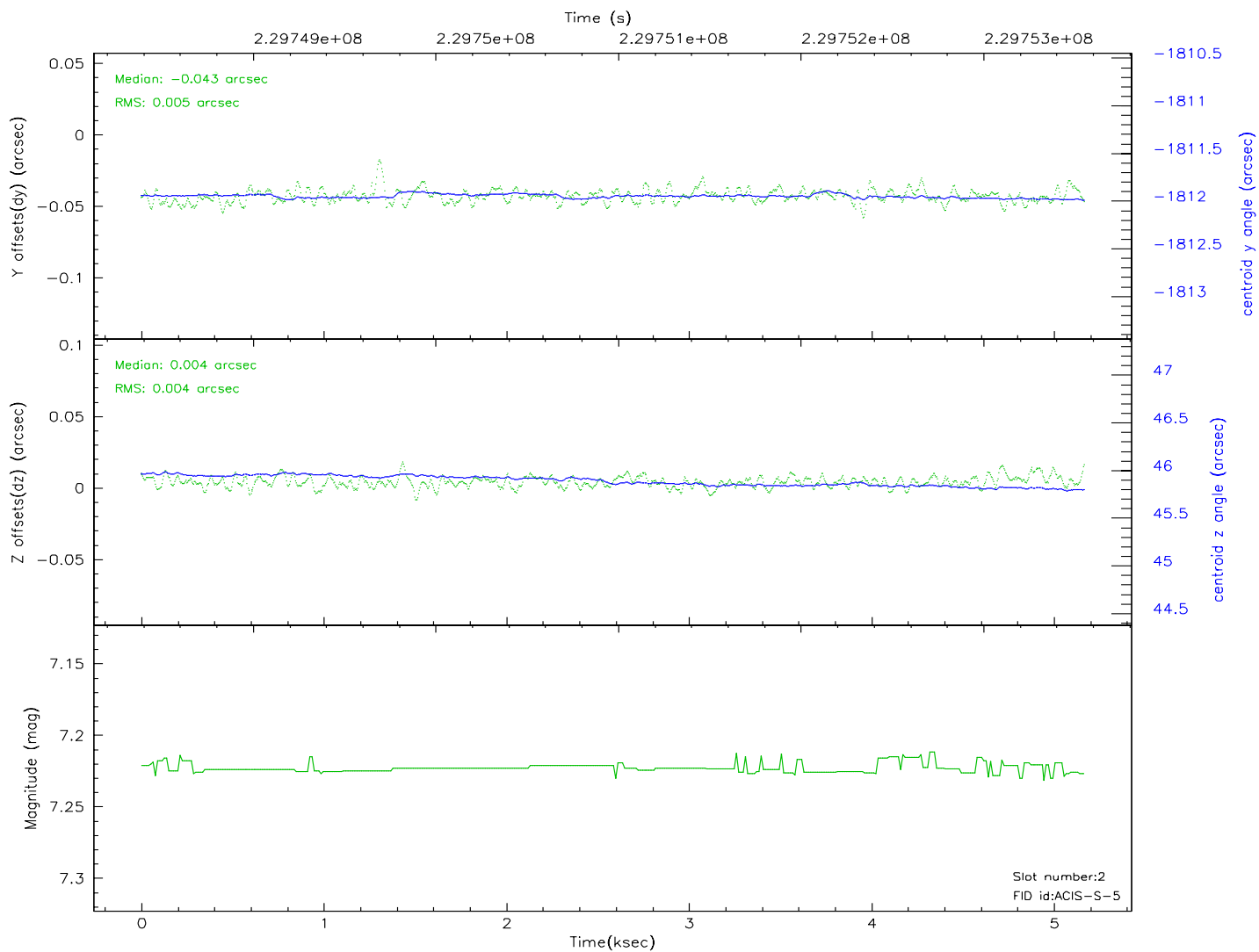
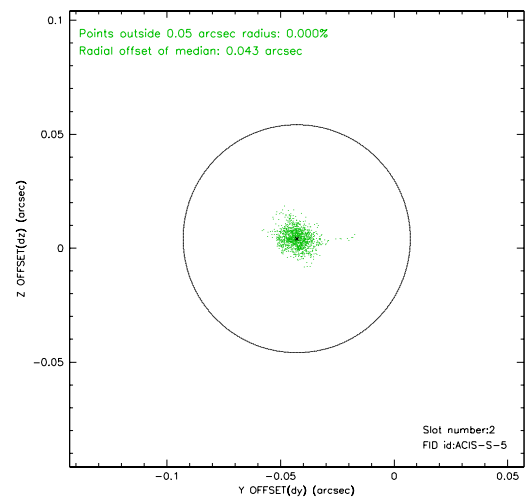
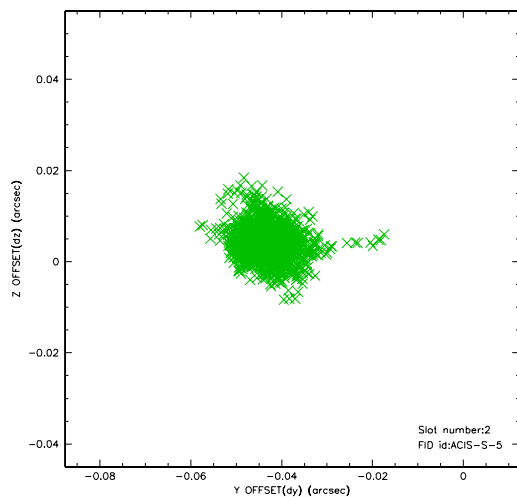
### 2.5.1 Slot 0



## 2.5.2 Slot 1

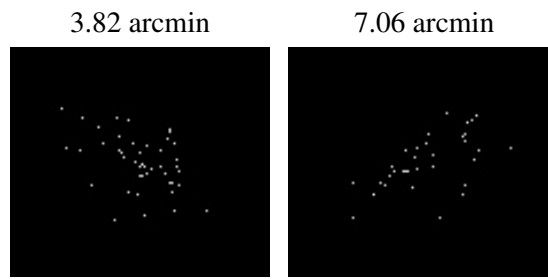


### 2.5.3 Slot 2





### 3 Point Sources



## A Summary

### A.1 Status

V&V Scientist	Beth Sundheim
V&V Date (YYYY-MM-DD)	2006.03.01
V&V Edition	1
V&V Disposition and Status	OK
V&V Charge Time	5.169599

### A.2 Comments