

# V&V Reference Report

## L2 ASCDS Version : 8.4.3

Observation 6239 - L2 Version 4  
Chandra X-Ray Center

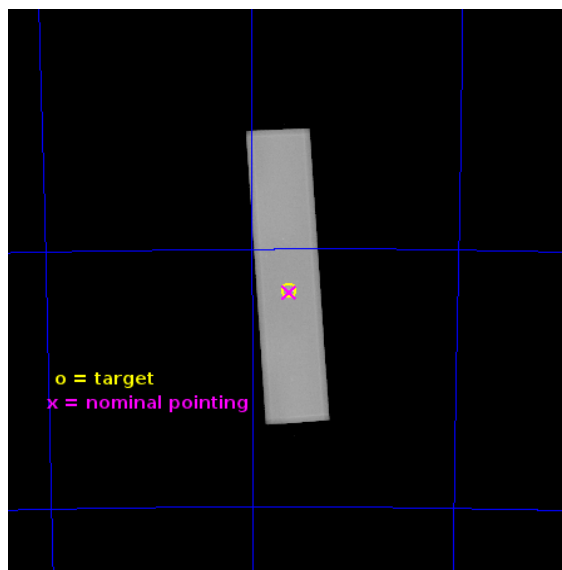
L2 Processing Date : Jun 28 2013

## Contents

<b>1</b>	<b>Front</b>	<b>2</b>
<b>2</b>	<b>OBI</b>	<b>3</b>
2.1	OBI . . . . .	3
2.1.1	Images . . . . .	3
2.1.2	Parameters . . . . .	4
2.1.3	Events . . . . .	4
2.2	Compared Parameters . . . . .	5
2.3	Aspect . . . . .	6
2.4	Star Slots . . . . .	9
2.4.1	Slot 3 . . . . .	9
2.4.2	Slot 4 . . . . .	10
2.4.3	Slot 5 . . . . .	11
2.4.4	Slot 6 . . . . .	12
2.4.5	Slot 7 . . . . .	13
2.5	FID Slots . . . . .	14
2.5.1	Slot 0 . . . . .	14
2.5.2	Slot 1 . . . . .	15
2.5.3	Slot 2 . . . . .	16
<b>A</b>	<b>Summary</b>	<b>17</b>
A.1	Status . . . . .	17
A.2	Comments . . . . .	17

# 1 Front

seq_num	500535	Sequence number
obs_id	6239	Observation id
title	Search for Sub-Millisecond Pulsars in 47 Tuc	Proposal title
observer	Prof. Robert Rutledge	Principal investigator
object	47 Tuc	Source name
ra_targ	6.021667	Observer's specified target RA [deg]
dec_targ	-72.080528	Observer's specified target Dec [deg]
ra_nom	6.0202126764742	Nominal RA [deg]
dec_nom	-72.085204449107	Nominal Dec [deg]
roll_nom	266.18820855191	Nominal Roll [deg]
revision	4	Processing version of data
ontime	50158.377324998	[s]
livetime	49876.624222596	Ontime multiplied by DTCOR
l2events	2617695	Number of level 2 events

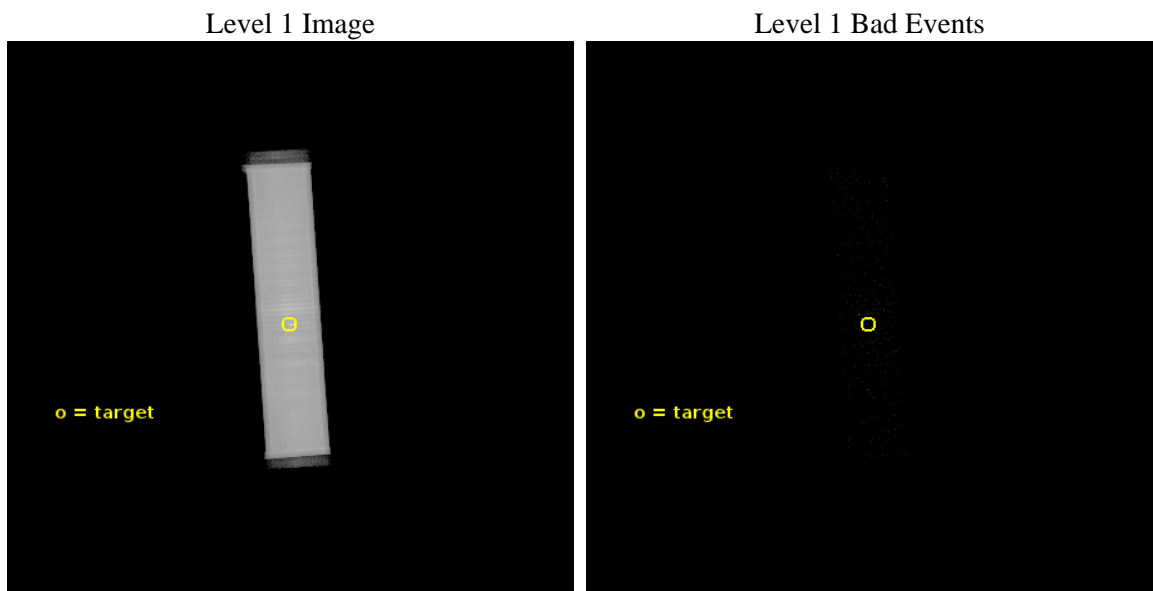




## 2 OBI

### 2.1 OBI

#### 2.1.1 Images



### 2.1.2 Parameters

obi_num	1	Obi number	sched_exp_time	50000.000000	[s] Scheduled observation exposure time
ascdsver	10	Processing system revision	ontime	50158.377324998	[s]
caldsver	4.5.7	&#160	l1events	3629838	Number of level 1 events
date	2013-06-29T02:26:33	Date and time of file creation			
revision	4	Processing version of data			

### 2.1.3 Events

Level 1 Events

	segment 1	segment 2	segment 3
level 1 events	3949	3625883	6
rejected events	88	75287	0
rejected %	2%	2%	0%

## 2.2 Compared Parameters

Parameter	Planned	Actual
Instrument	HRC	HRC
Detector	HRC-S	HRC-S
Grating	NONE	NONE
Data mode	OBSERVING	OBSERVING
Observation mode	POINTING	POINTING
[deg] Pointing RA	5.975165	6.020212676474188
[deg] Pointing Dec	-72.060172	-72.08520444910698
[deg] Pointing Roll	266.078014	266.1882085519071
[mm] SIM focus pos	-1.533336	-1.526339935833849
[mm] SIM defocus	7.710433287538843e-07	0.006996703570447904
[mm] SIM translation stage pos	250.455976	250.466033080201
[mm] SIM translation stage offset	0	-0.01005468664627074
[s] Observation start time (MET)	252973948.184000	252972594.55216
Observation start date	2006-01-06T22:31:23	2006-01-06T22:09:54
[s] Observation end time (MET)	253023948.184000	253024936.17959
Observation end date	2006-01-07T12:24:43	2006-01-07T12:42:16

Parameter	Planned	Actual
Obspar format version number	7	7
Obspar file type	PREDICTED	ACTUAL
Obspar update status	NONE	UPDATED

## 2.3 Aspect

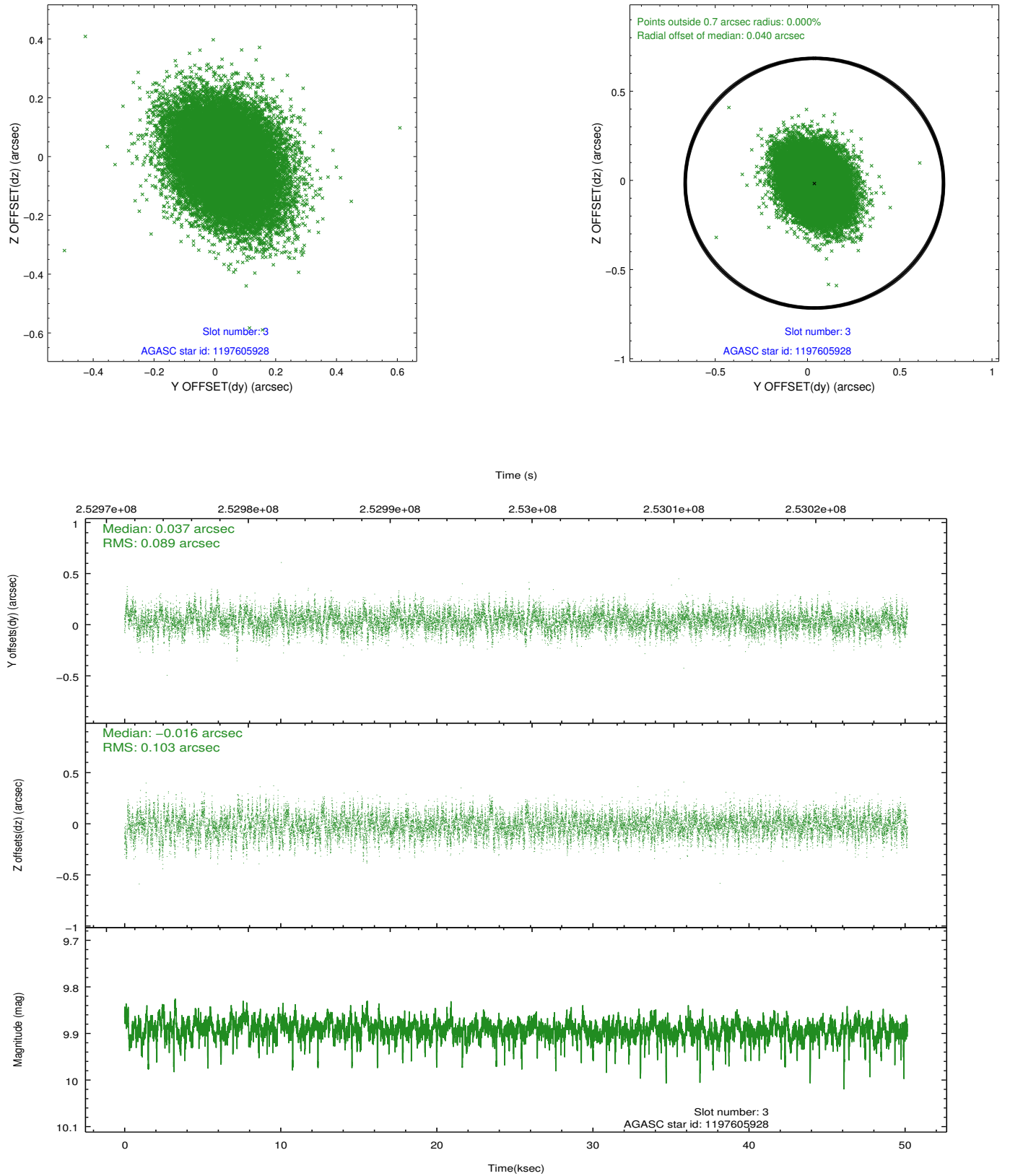


### Slot Statistics

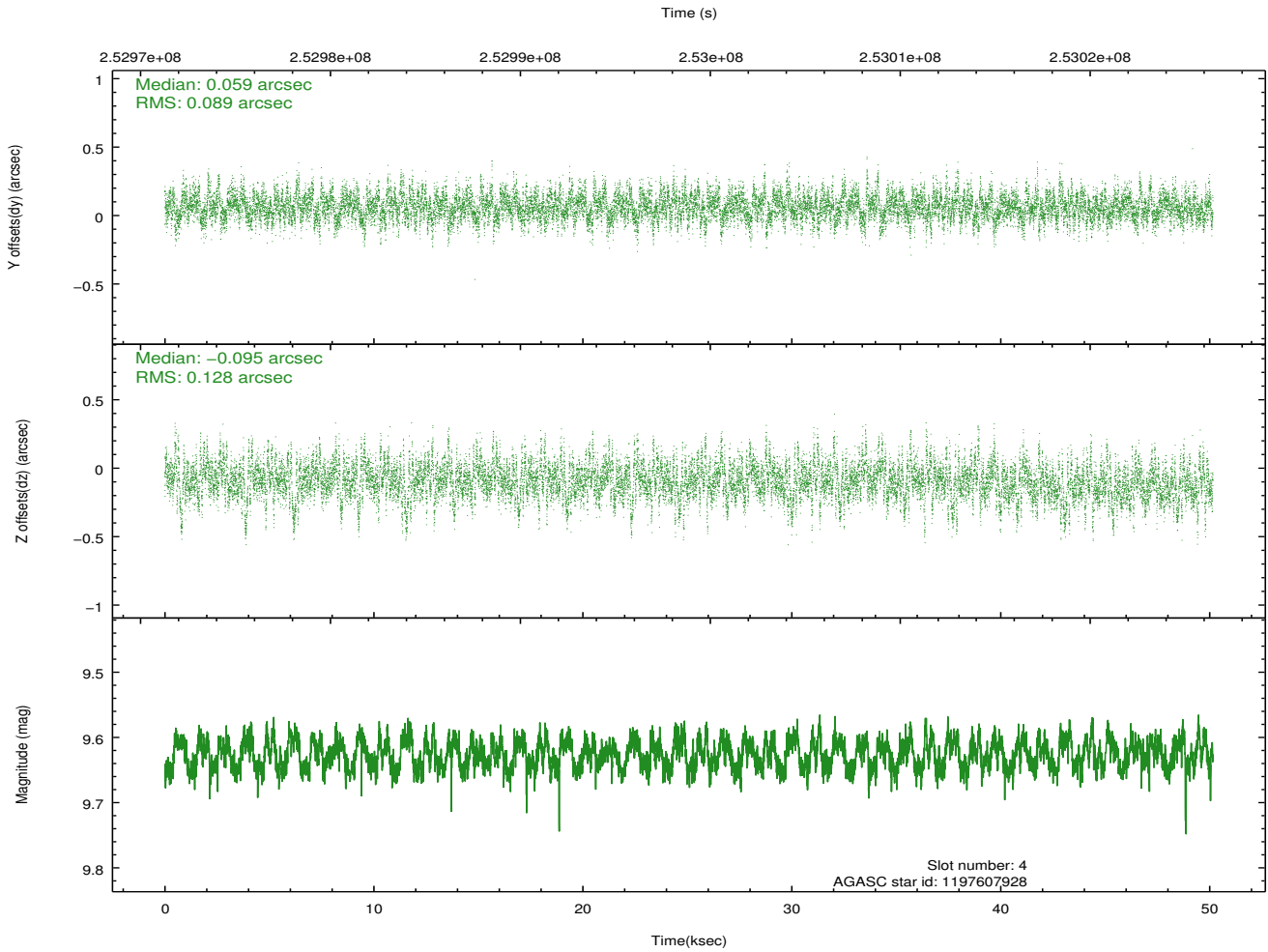
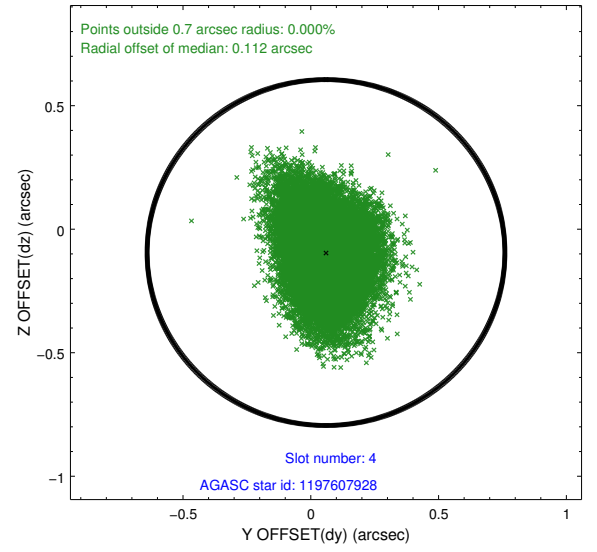
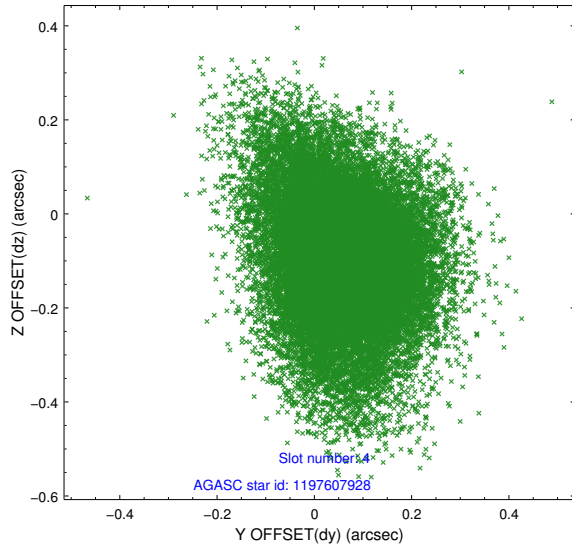
slot	status	id	mag	n_pts	med_dy	med_dz	dr1	dr2	ra	dec	mean_y	mean_z
0	FID	HRC-S-1	7.01	12230	0.140	-0.130	0.011	0.060	0.000000	0.000000	-1163.24	-461.07
1	FID	HRC-S-2	7.00	12234	0.132	-0.105	0.015	0.026	0.000000	0.000000	1236.31	-453.70
2	FID	HRC-S-3	7.02	12234	0.120	-0.069	0.014	0.077	0.000000	0.000000	-1165.89	568.49
3	GUIDE	1197605928	9.89	24420	0.037	-0.016	0.144	0.238	4.361277	-72.423732	1450.08	-1658.71
4	GUIDE	1197607928	9.63	24428	0.059	-0.095	0.160	0.281	7.837743	-72.165759	270.72	2076.77
5	GUIDE	1197621088	9.92	24435	-0.053	-0.045	0.164	0.283	3.823480	-72.180366	636.70	-2330.55
6	GUIDE	1197617752	10.25	24383	0.005	0.217	0.199	0.320	4.480632	-72.284129	937.28	-1576.36
7	GUIDE	1197624848	9.71	24443	-0.050	-0.051	0.159	0.256	4.678747	-71.378615	-2329.34	-1653.80

## 2.4 Star Slots

### 2.4.1 Slot 3

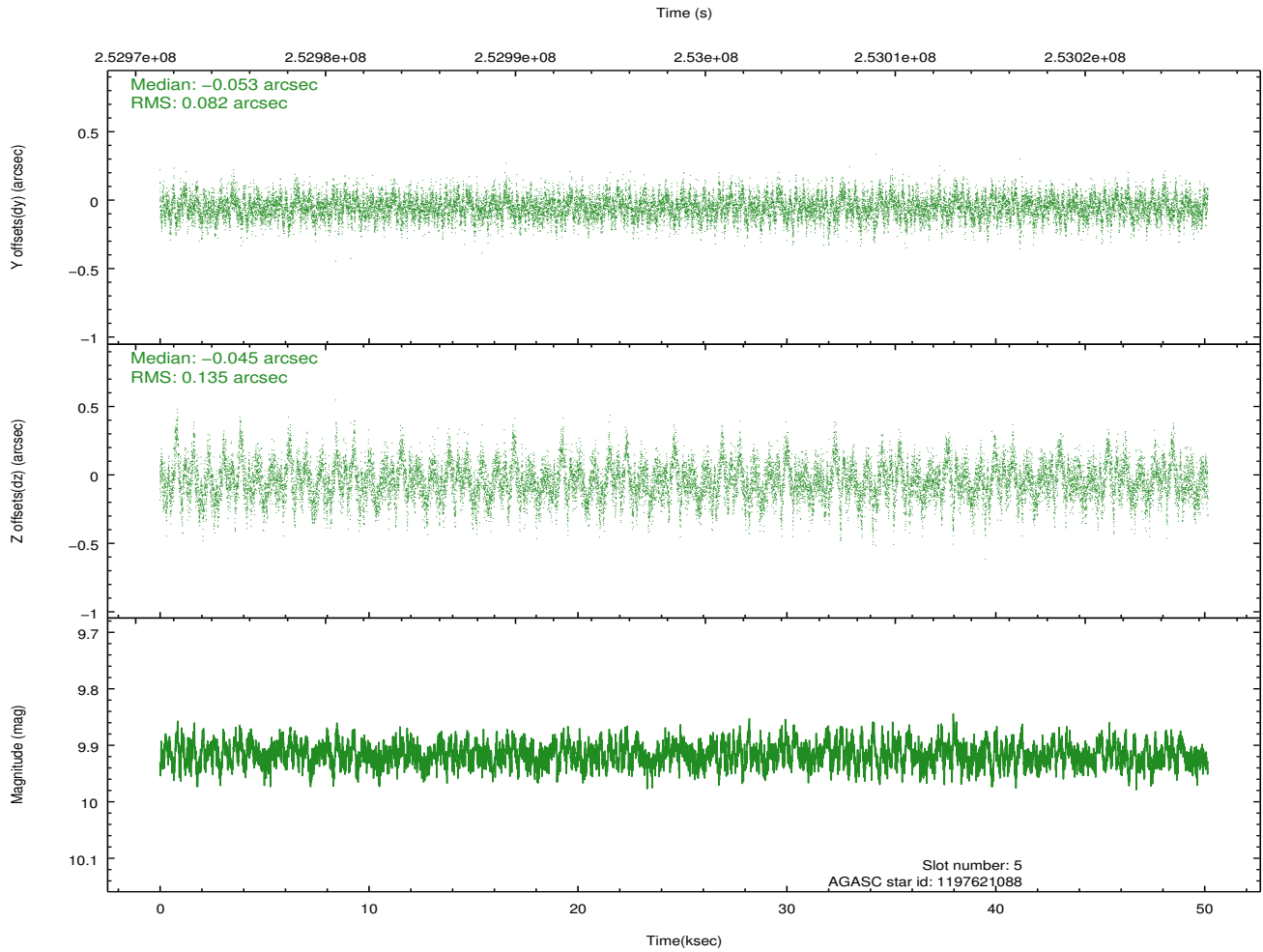
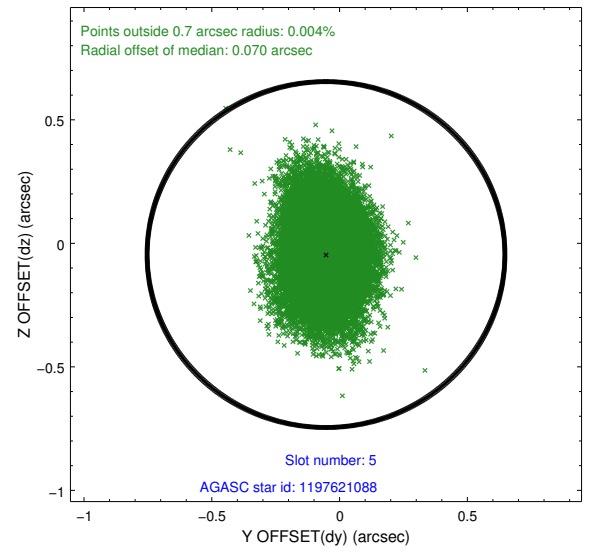
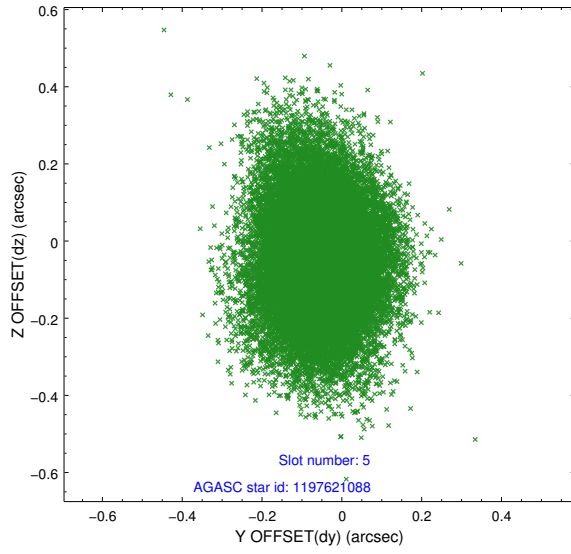


## 2.4.2 Slot 4

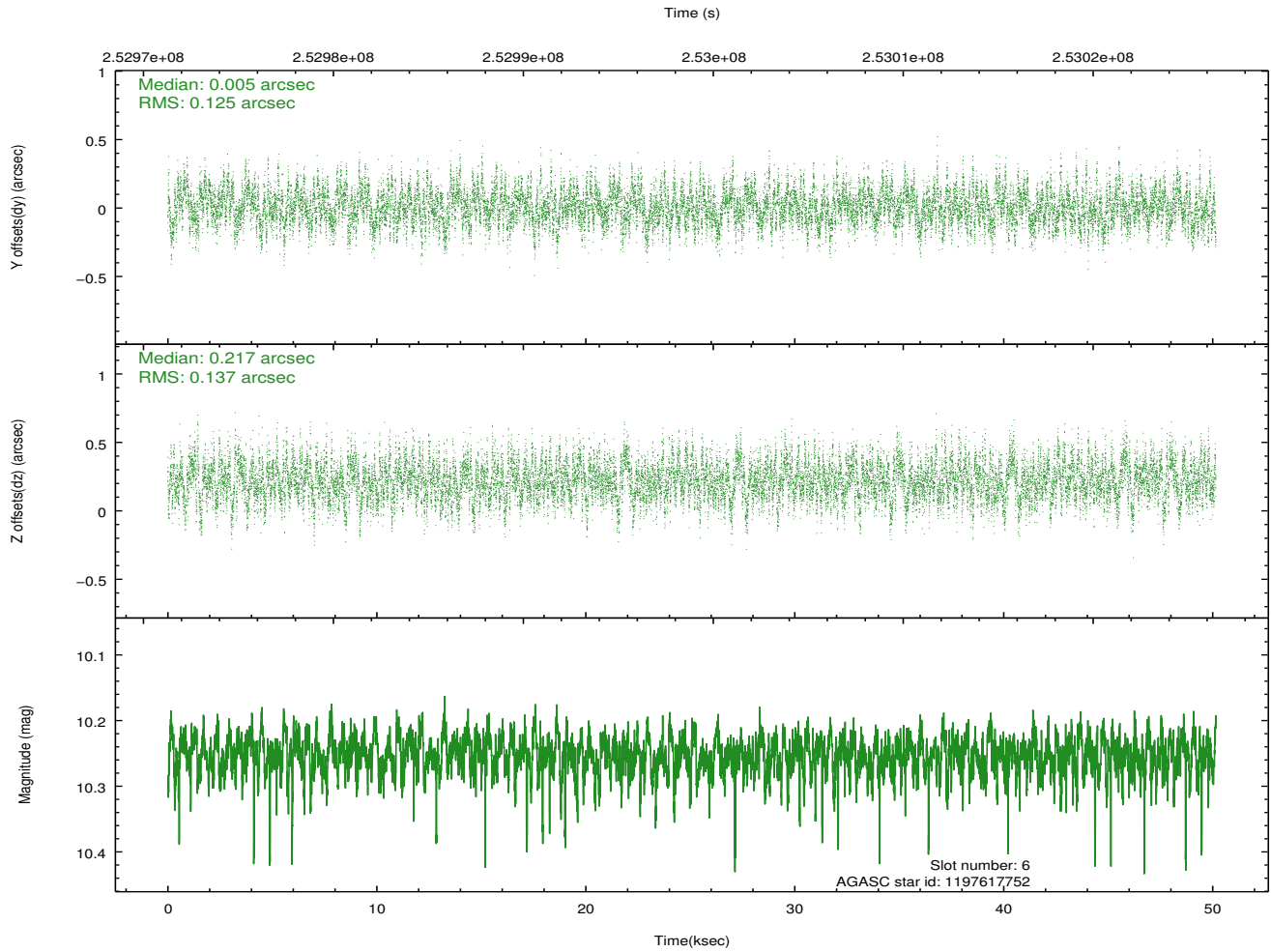
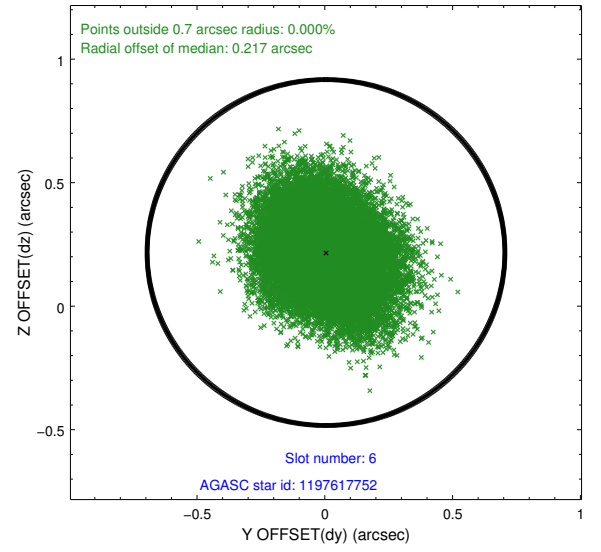
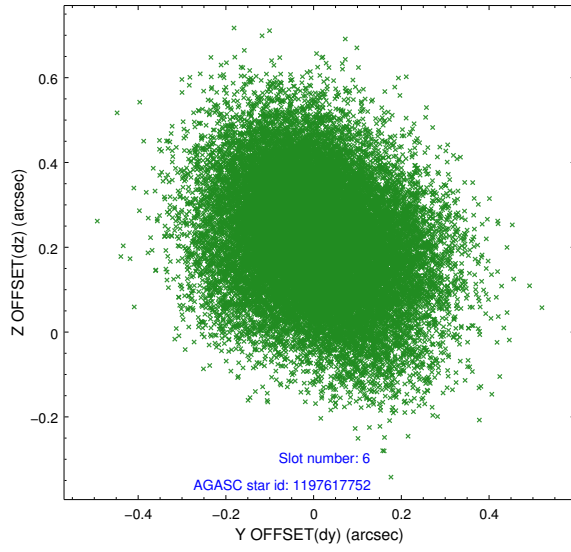




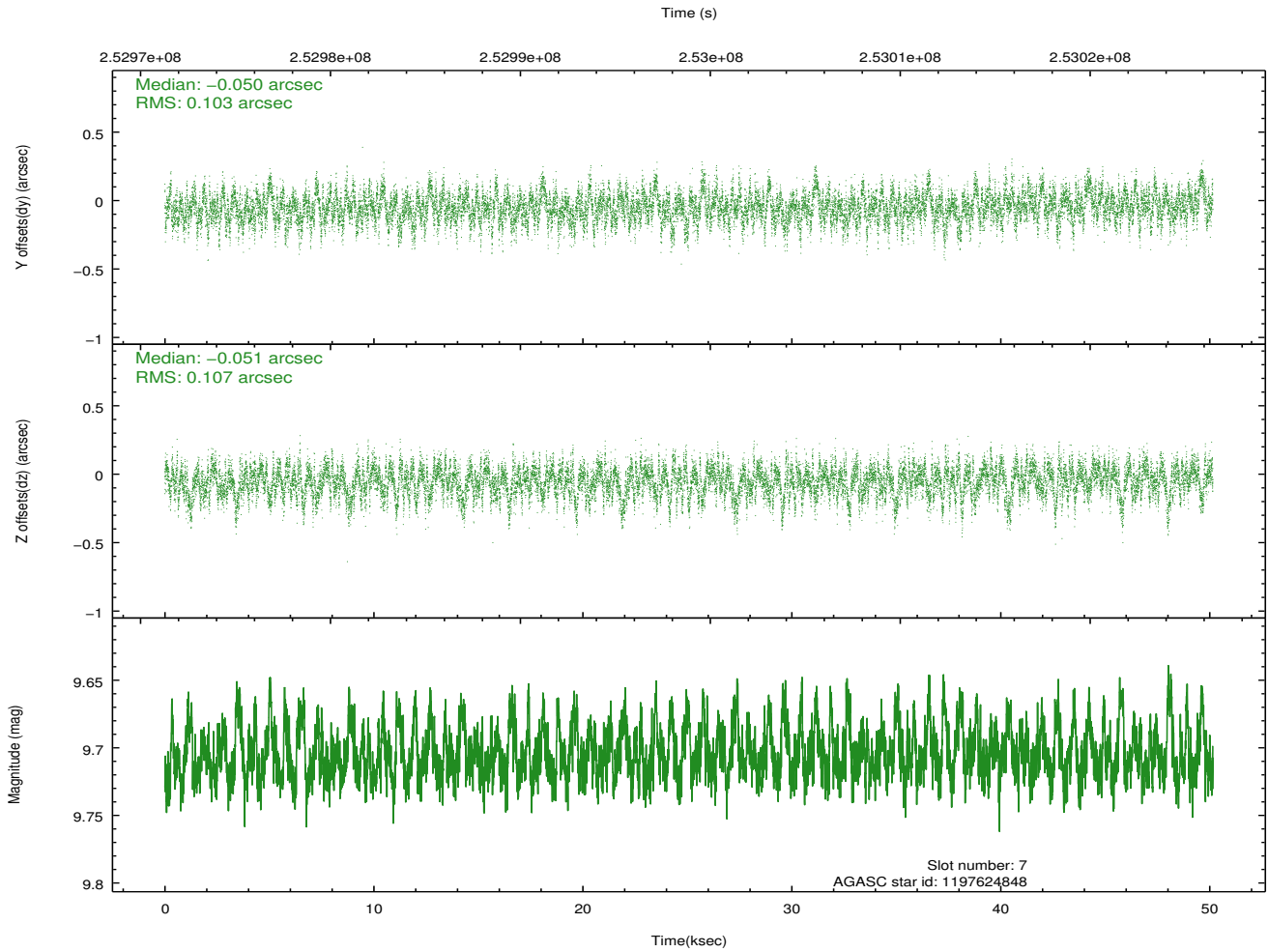
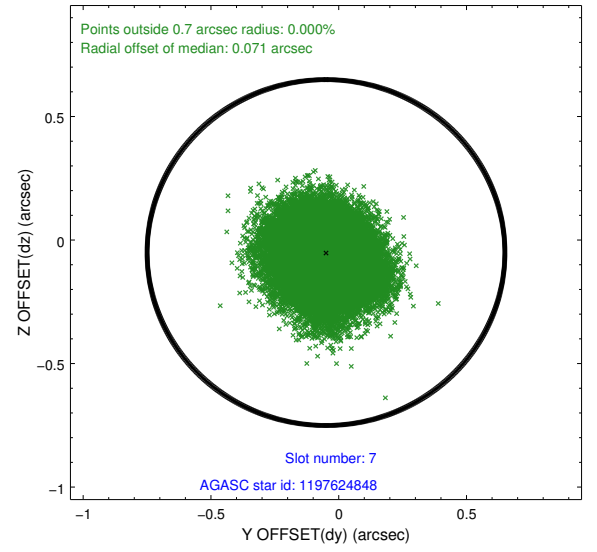
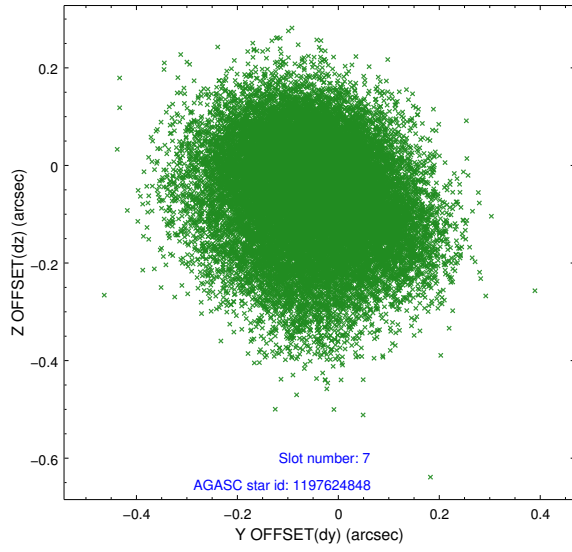
### 2.4.3 Slot 5



## 2.4.4 Slot 6

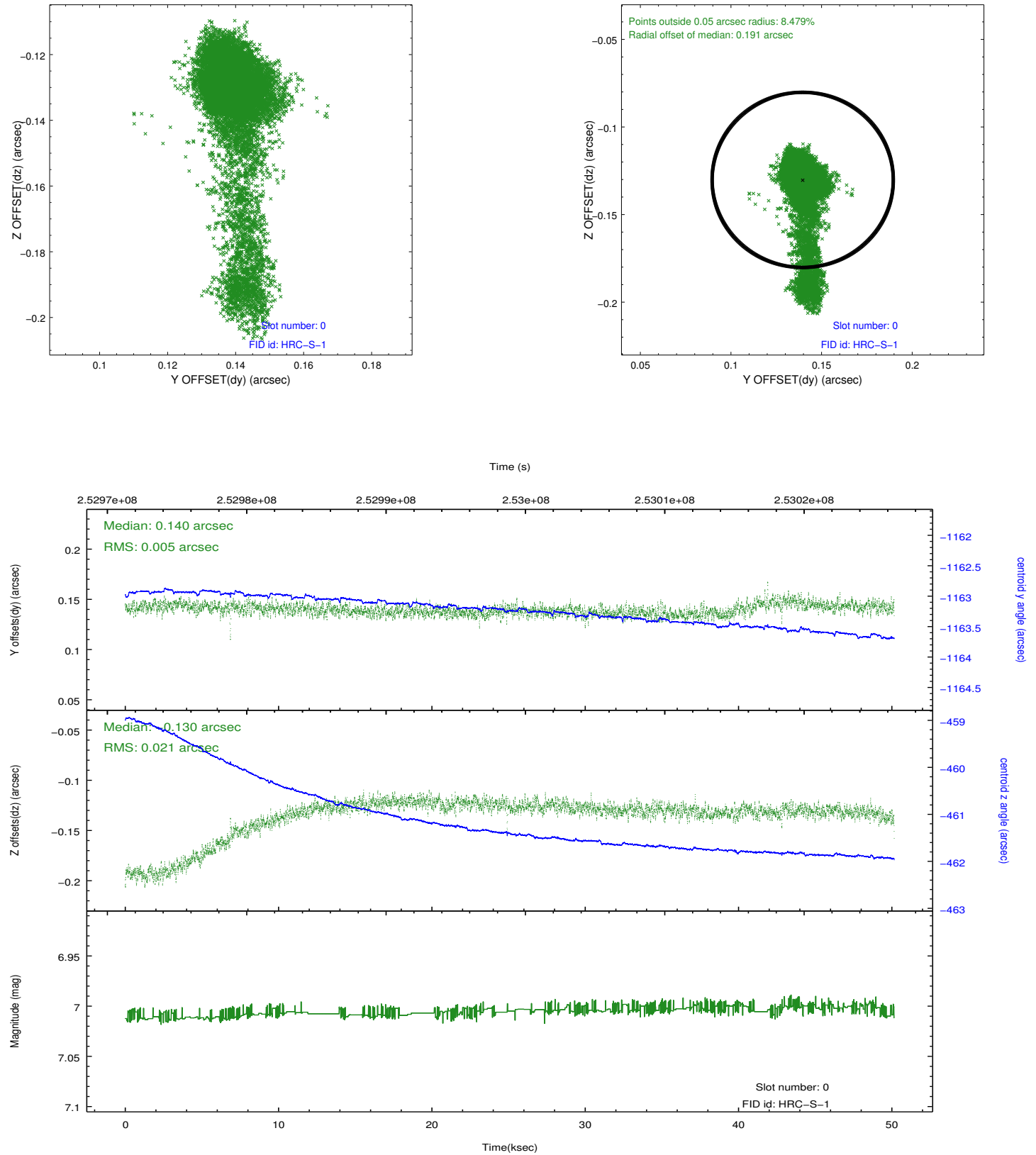


## 2.4.5 Slot 7

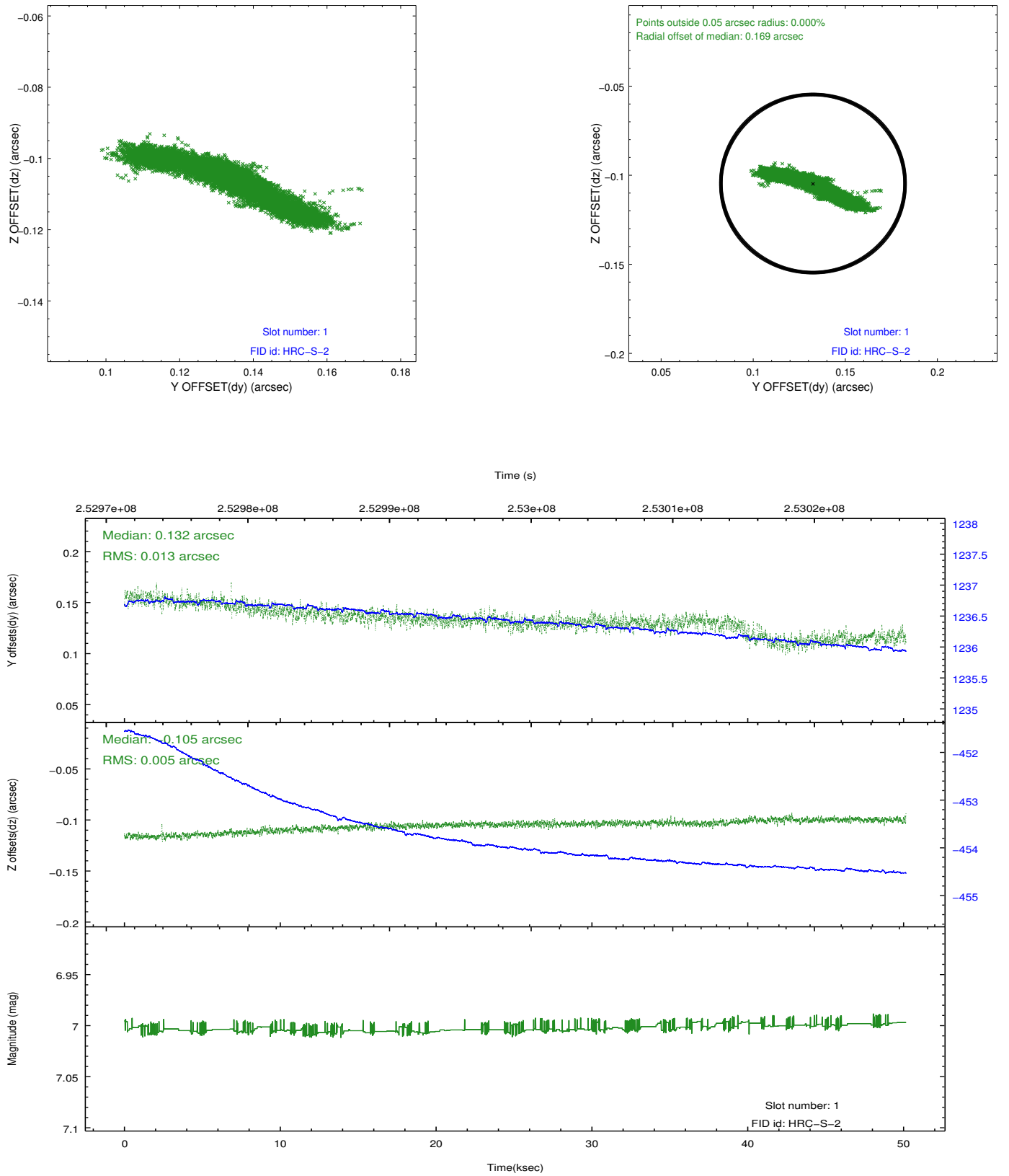


## 2.5 FID Slots

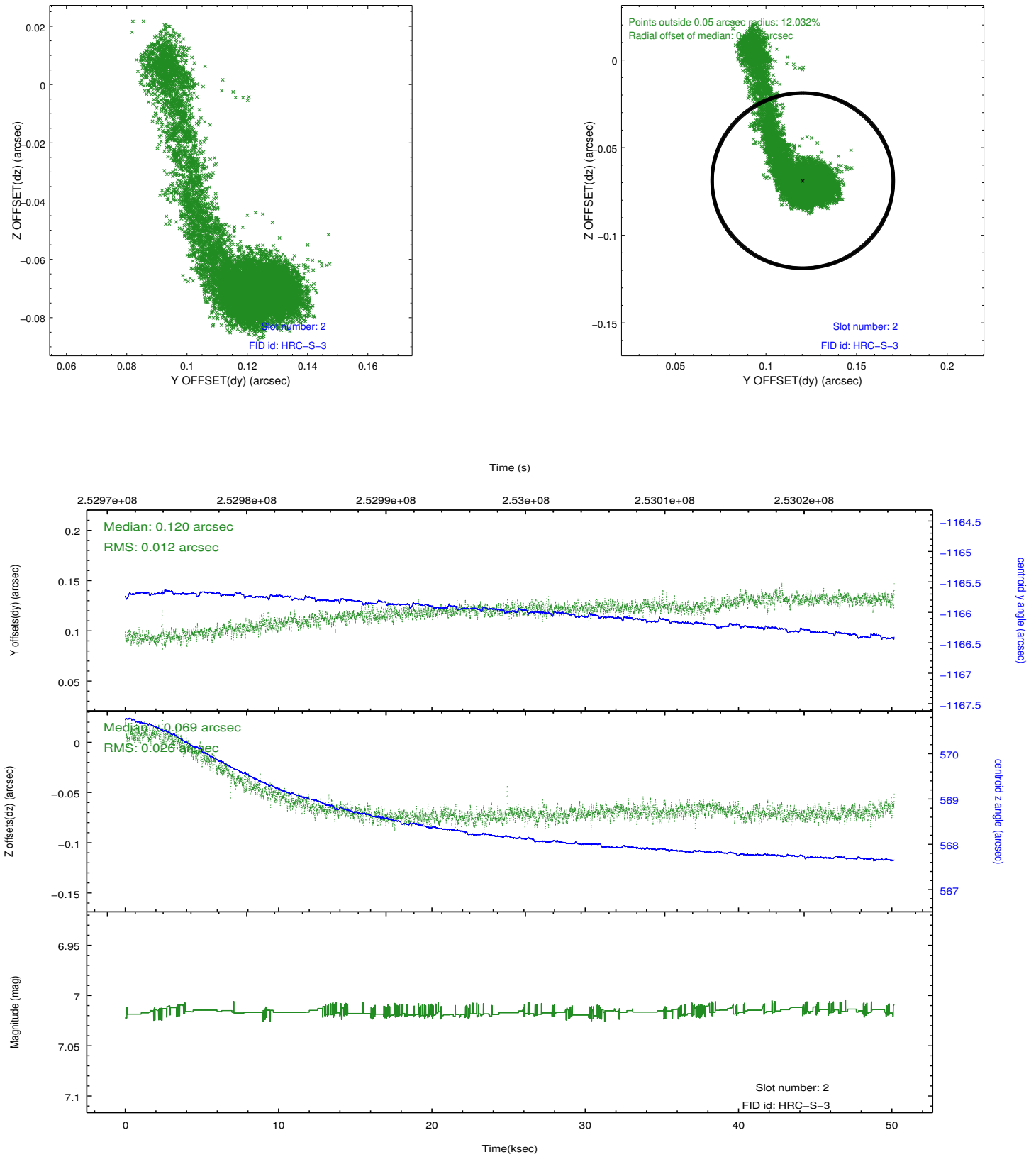
### 2.5.1 Slot 0



## 2.5.2 Slot 1



### 2.5.3 Slot 2



## A Summary

### A.1 Status

V&V Scientist	Beth Sundheim
V&V Date (YYYY-MM-DD)	2013.07.01
V&V Edition	1
V&V Disposition and Status	OK
V&V Charge Time	50.15812

### A.2 Comments