

V&V Reference Report

L2 ASCDS Version : 7.6.10

Observation 61989 - L2 Version 001
Chandra X-Ray Center

L2 Processing Date : Jun 1 2007

Contents

1	Front	2
2	OBI	3
2.1	OBI	3
2.1.1	Images	3
2.1.2	Bias	3
2.1.3	Parameters	4
2.1.4	Events	4
2.2	Compared Parameters	5
2.3	Star Slots	6
2.4	FID Slots	6
A	Summary	7
A.1	Status	7
A.2	Comments	7

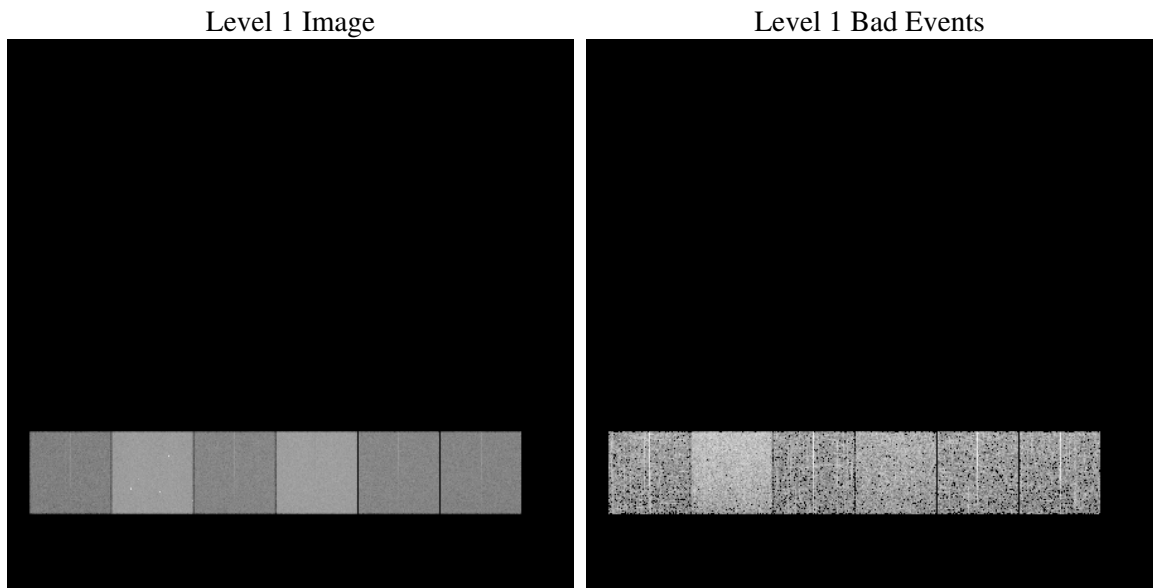
1 Front

seq_num	
obs_id	61989
title	ACIS-456789 diagnostics
observer	CHANDRA engineering request/realtime commanding
object	
dtcycle	0
cycle	P
ra_targ	0.0
dec_targ	0.0
ra_nom	158.9911089544
dec_nom	-54.376602669438
roll_nom	214.99089275818
revision	4
ontime	4239.0032032579
livetime	4185.326392277
ontime4	1877.0122420341
ontime5	4537.8030572832
ontime6	2035.7818524987
ontime7	4239.0032032579
ontime8	2061.792342186
ontime9	2003.2485519499
l2events	1266349

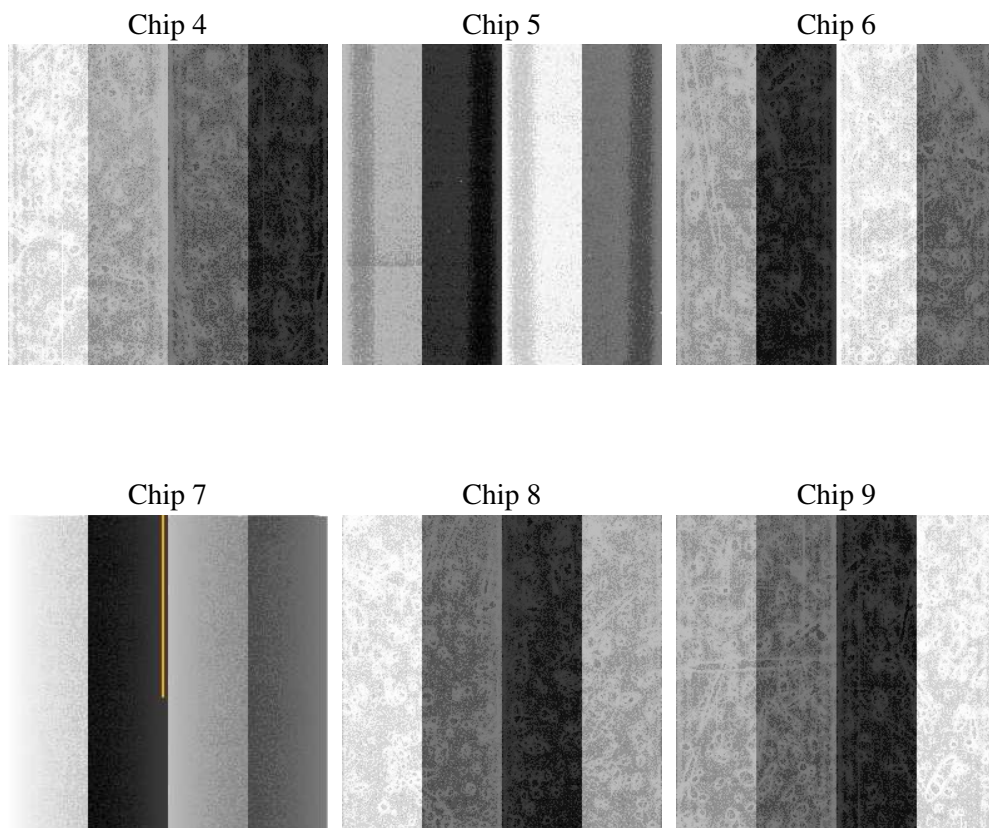
2 OBI

2.1 OBI

2.1.1 Images



2.1.2 Bias



2.1.3 Parameters

obi_num	1
ascdsver	7.6.10
caldbver	3.4.0
date	2007-06-01T07:29:31
revision	4

sched_exp_time	0.0
ontime	4239.0032032579
ontime4	1877.0122420341
ontime5	4537.8030572832
ontime6	2035.7818524987
ontime7	4239.0032032579
ontime8	2061.792342186
ontime9	2003.2485519499
l1events	1436395

2.1.4 Events

	ccd 4	ccd 5	ccd 6	ccd 7	ccd 8	ccd 9
level 1 events	161506	354803	187734	366645	188560	177147
rejected events	16491	29462	15919	19464	16483	15710
rejected %	10%	8%	8%	5%	8%	8%

	ccd 4	ccd 5	ccd 6	ccd 7	ccd 8	ccd 9
grade 0 events	82574	89032	94014	90300	95400	89012
	51%	25%	50%	24%	50%	50%
grade 1 events	444	284	428	237	458	446
	0%	0%	0%	0%	0%	0%
grade 2 events	25642	109299	29877	77439	30505	28549
	15%	30%	15%	21%	16%	16%
grade 3 events	8828	22681	10540	36209	10860	9923
	5%	6%	5%	9%	5%	5%
grade 4 events	8938	22520	10614	35468	10844	9905
	5%	6%	5%	9%	5%	5%
grade 5 events	1112	6309	1266	4481	1380	1321
	0%	1%	0%	1%	0%	0%
grade 6 events	19307	82027	27049	108017	24726	24308
	11%	23%	14%	29%	13%	13%
grade 7 events	14661	22651	13946	14494	14387	13683
	9%	6%	7%	3%	7%	7%

2.2 Compared Parameters

Parameter	Planned	Actual	Parameter	Planned	Actual
Instrument	ACIS	ACIS	Obspar format version number	6	6
Detector	ACIS-456789	ACIS-456789	Obspar file type	PREDICTED	ACTUAL
Grating	NONE	NONE	Obspar update status	NONE	UPDATED
Data mode	FAINT	FAINT	On-chip summing requested	N	N
Observation mode	SECONDARY	SECONDARY	Subarray requested	NONE	NONE
Pointing RA	0	158.9911089544048	Alternating exposures requested	N	N
Pointing Dec	0	-54.37660266943768	Primary exposure time	0.000000	3.2
Pointing Roll	0.0	214.9908927581811			
SIM focus pos (mm)	-0.684267	-0.6828225247311905			
SIM defocus (mm)	0	0.8505141146731063			
SIM translation stage pos (mm)	-190.132523	250.466033080201			
SIM translation stage offset (mm)	0	-0.01005468664627074			
Observation start time	80635888.926	80635888.15769599			
Observation start date	2000-07-22T06:51:29	2000-07-22T06:51:28			
Observation end time	80679637.978	80679637.209327			
Observation end date	2000-07-22T19:00:38	2000-07-22T19:00:37			
Read mode	TIMED	TIMED			

2.3 Star Slots

2.4 FID Slots

A Summary

A.1 Status

V&V Scientist	Beth Sundheim
V&V Date (YYYY-MM-DD)	2007.06.01
V&V Edition	1
V&V Disposition and Status	OK
V&V Charge Time	4.2390032

A.2 Comments