

# V&V Reference Report

## L2 ASCDS Version : 8.4.5

Observation 61669 - L2 Version 3  
Chandra X-Ray Center

L2 Processing Date : Sep 15 2012

## Contents

<b>1</b>	<b>Front</b>	<b>2</b>
<b>2</b>	<b>OBI</b>	<b>3</b>
2.1	OBI . . . . .	3
2.1.1	Images . . . . .	3
2.1.2	Bias . . . . .	3
2.1.3	Parameters . . . . .	4
2.1.4	Events . . . . .	4
2.2	Compared Parameters . . . . .	5
2.3	Star Slots . . . . .	6
2.4	FID Slots . . . . .	6
<b>A</b>	<b>Summary</b>	<b>7</b>
A.1	Status . . . . .	7
A.2	Comments . . . . .	7

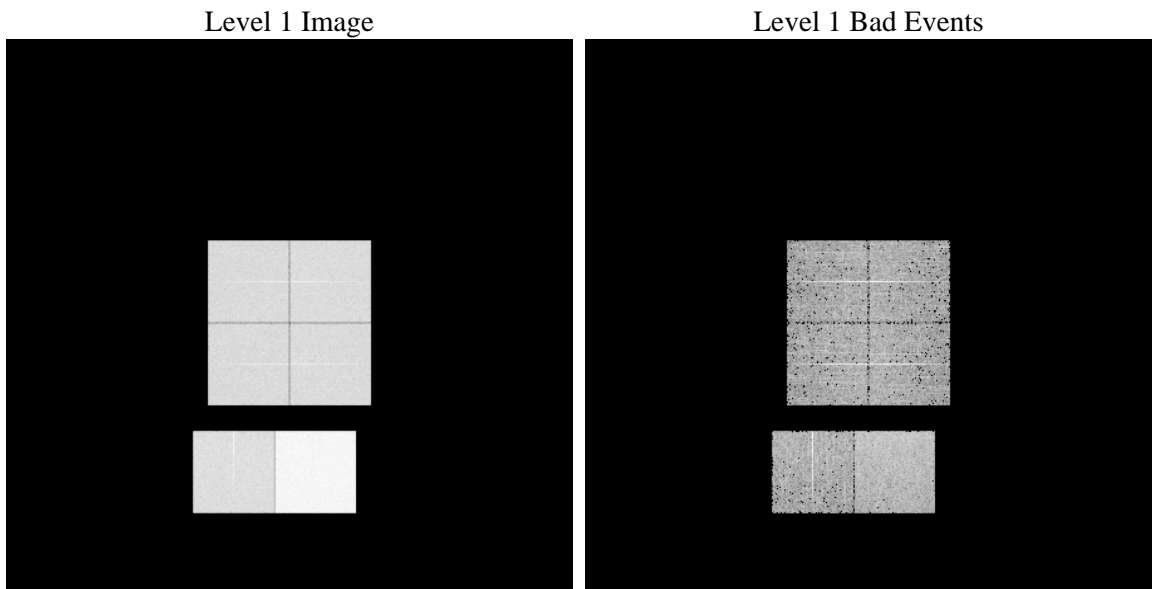
# 1 Front

seq_num	&#160	Sequence number
obs_id	61669	Observation id
title	ACIS-012367 diagnostics	Proposal title
observer	CHANDRA engineering request/realtime commanding	Principal investig
object	&#160	Source name
dtcycle	0	&#160
cycle	P	events from which exps? Prim/Second/Both
ra_targ	0.0	Observer's specified target RA [deg]
dec_targ	0.0	Observer's specified target Dec [deg]
ra_nom	184.9828670596	Nominal RA [deg]
dec_nom	24.975891890795	Nominal Dec [deg]
roll_nom	204.56536776454	Nominal Roll [deg]
revision	3	Processing version of data
ontime	7083.8492608666	Sum of GTIs [s]
livetime	6994.1492961436	Livetime [s]
ontime0	2648.8151870072	Sum of GTIs [s]
ontime1	2762.2514471561	Sum of GTIs [s]
ontime2	2582.2397651821	Sum of GTIs [s]
ontime3	2640.4140260071	Sum of GTIs [s]
ontime6	2883.6967668682	Sum of GTIs [s]
ontime7	7083.8492608666	Sum of GTIs [s]
l2events	1339692	Number of level 2 events

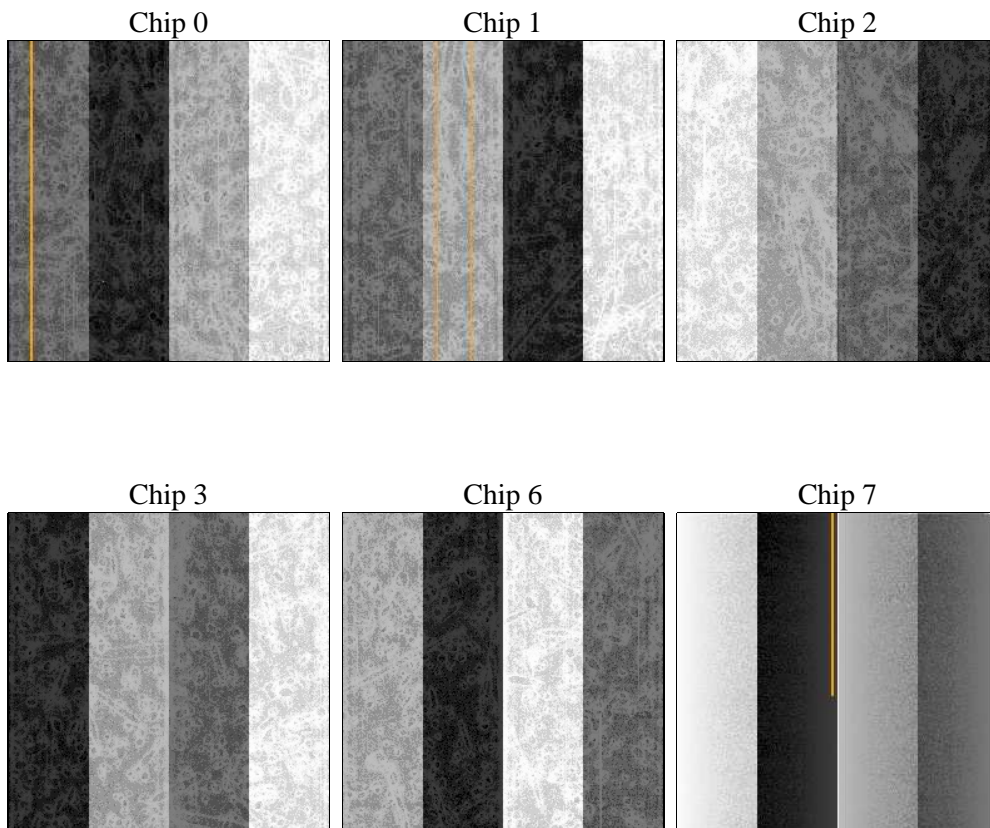
## 2 OBI

### 2.1 OBI

#### 2.1.1 Images



#### 2.1.2 Bias



### 2.1.3 Parameters

obi_num	0	Obi number	sched_exp_time	0.0	[s] Scheduled observation exposure time
ascdsver	8.4.5	Processing system revision	ontime	7083.8492608666	Sum of GTIs [s]
caldsver	4.5.1.1	&#160	ontime0	2648.8151870072	Sum of GTIs [s]
date	2012-09-15T05:56:20	Date and time of file creation	ontime1	2762.2514471561	Sum of GTIs [s]
revision	3	Processing version of data	ontime2	2582.2397651821	Sum of GTIs [s]
			ontime3	2640.4140260071	Sum of GTIs [s]
			ontime6	2883.6967668682	Sum of GTIs [s]
			ontime7	7083.8492608666	Sum of GTIs [s]
			l1events	1549486	Number of level 1 events

### 2.1.4 Events

	ccd 0	ccd 1	ccd 2	ccd 3	ccd 6	ccd 7		ccd 0	ccd 1	ccd 2	ccd 3	ccd 6	ccd 7
level 1 events	197304	205295	196376	200832	225691	523988	grade 0 events	96195	100401	95860	98502	108867	124411
rejected events	22016	22877	23940	23571	25600	36042		48%	48%	48%	49%	48%	23%
rejected %	11%	11%	12%	11%	11%	6%	grade 1 events	598	558	562	582	611	363
								0%	0%	0%	0%	0%	0%
							grade 2 events	31129	32243	30294	31198	34537	108311
								15%	15%	15%	15%	15%	20%
							grade 3 events	11270	11589	10823	11289	12332	49537
								5%	5%	5%	5%	5%	9%
							grade 4 events	11099	11627	10819	11312	12364	49127
								5%	5%	5%	5%	5%	9%
							grade 5 events	1536	1590	1551	1547	1766	7787
								0%	0%	0%	0%	0%	1%
							grade 6 events	25595	26558	24640	24960	31991	156560
								12%	12%	12%	12%	14%	29%
							grade 7 events	19882	20729	21827	21442	23223	27892
								10%	10%	11%	10%	10%	5%

## 2.2 Compared Parameters

Parameter	Planned	Actual	Parameter	Planned	Actual
Instrument	ACIS	ACIS	Obspar format version number	7	7
Detector	ACIS-012367	ACIS-012367	Obspar file type	PREDICTED	ACTUAL
Grating	NONE	NONE	Obspar update status	NONE	UPDATED
Data mode	FAINT	FAINT	On-chip summing requested	N	N
Observation mode	SECONDARY	SECONDARY	Subarray requested	NONE	NONE
[deg] Pointing RA	0	184.9828670596039	Alternating exposures requested	N	N
[deg] Pointing Dec	0	24.97589189079484	[s] Primary exposure time	3.2	3.2
[deg] Pointing Roll	0.0	204.5653677645436			
[mm] SIM focus pos	-0.782348	-0.6828225247311905			
[mm] SIM defocus	0	0.8505141146731063			
[mm] SIM translation stage pos	-233.592463	250.466033080201			
[mm] SIM translation stage offset	0	-0.01005468664627074			
[s] Observation start time (MET)	103299683.239092	103299682.47063			
Observation start date	2001-04-10T14:21:23	2001-04-10T14:21:22			
[s] Observation end time (MET)	103312065.239571	103312064.47111			
Observation end date	2001-04-10T17:47:45	2001-04-10T17:47:44			
Read mode	TIMED	TIMED			

## **2.3 Star Slots**

## **2.4 FID Slots**

## A Summary

### A.1 Status

V&V Scientist	Jen Lauer
V&V Date (YYYY-MM-DD)	2012.09.18
V&V Edition	1
V&V Disposition and Status	OK
V&V Charge Time	7.0838492608666

### A.2 Comments