

# V&V Reference Report

## L2 ASCDS Version : 8.4.5

Observation 61489 - L2 Version 3  
Chandra X-Ray Center

L2 Processing Date : Sep 23 2012

## Contents

<b>1</b>	<b>Front</b>	<b>2</b>
<b>2</b>	<b>OBI</b>	<b>3</b>
2.1	OBI . . . . .	3
2.1.1	Images . . . . .	3
2.1.2	Bias . . . . .	3
2.1.3	Parameters . . . . .	4
2.1.4	Events . . . . .	4
2.2	Compared Parameters . . . . .	5
2.3	Star Slots . . . . .	6
2.4	FID Slots . . . . .	6
<b>A</b>	<b>Summary</b>	<b>7</b>
A.1	Status . . . . .	7
A.2	Comments . . . . .	7

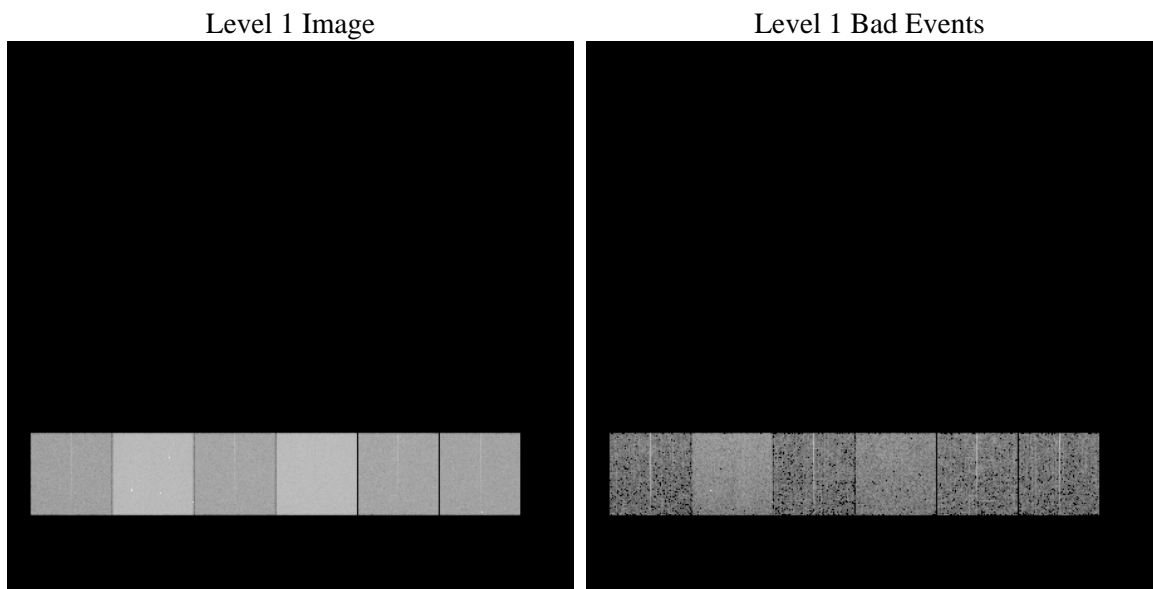
# 1 Front

seq_num	&#160	Sequence number
obs_id	61489	Observation id
title	ACIS-456789 diagnostics	Proposal title
observer	CHANDRA engineering request/realtime commanding	Principal investig
object	&#160	Source name
dtcycle	0	&#160
cycle	P	events from which exps? Prim/Second/Both
ra_targ	0.0	Observer's specified target RA [deg]
dec_targ	0.0	Observer's specified target Dec [deg]
ra_nom	55.960867474465	Nominal RA [deg]
dec_nom	56.618911553922	Nominal Dec [deg]
roll_nom	106.01100397815	Nominal Roll [deg]
revision	3	Processing version of data
ontime	5713.6407732815	Sum of GTIs [s]
livetime	5641.2912134687	Livetime [s]
ontime4	2268.7227432877	Sum of GTIs [s]
ontime5	6122.0010567158	Sum of GTIs [s]
ontime6	2489.0722033083	Sum of GTIs [s]
ontime7	5713.6407732815	Sum of GTIs [s]
ontime8	2489.1157827675	Sum of GTIs [s]
ontime9	2381.8993377835	Sum of GTIs [s]
l2events	1229149	Number of level 2 events

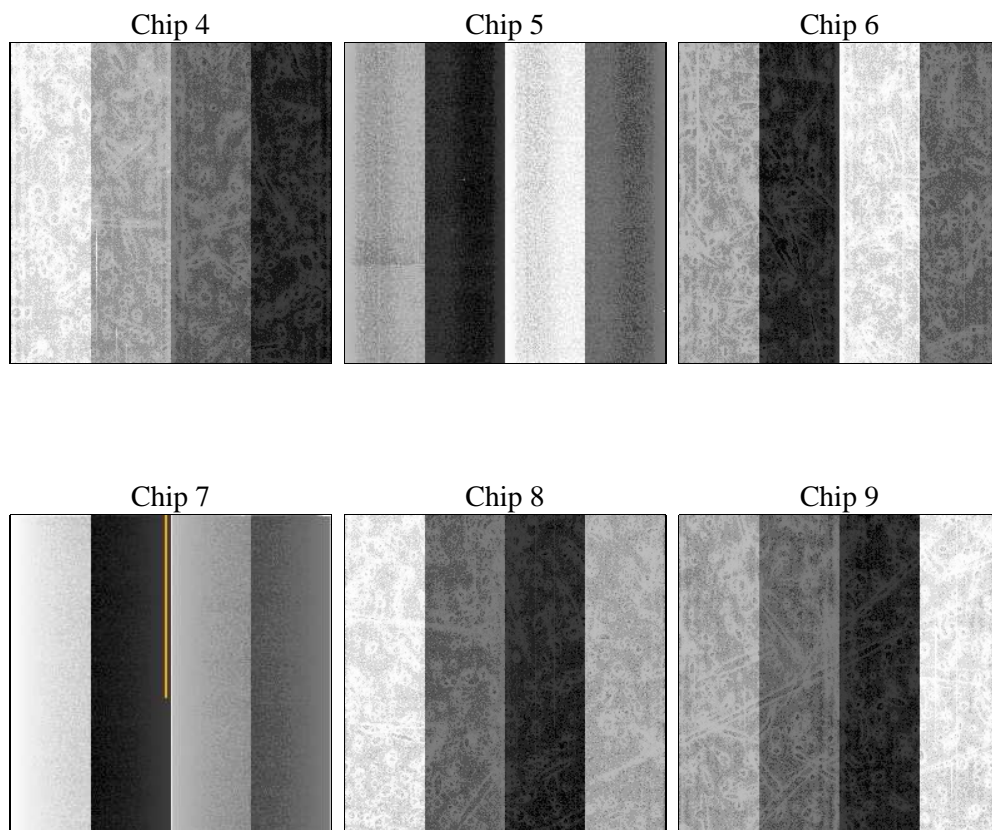
## 2 OBI

### 2.1 OBI

#### 2.1.1 Images



#### 2.1.2 Bias



### 2.1.3 Parameters

obi_num	0	Obi number	sched_exp_time	0.0	[s] Scheduled observation exposure time
ascdsver	8.4.5	Processing system revision	ontime	5713.6407732815	Sum of GTIs [s]
caldsver	4.5.1.1	&#160	ontime4	2268.7227432877	Sum of GTIs [s]
date	2012-09-23T11:07:08	Date and time of file creation	ontime5	6122.0010567158	Sum of GTIs [s]
revision	3	Processing version of data	ontime6	2489.0722033083	Sum of GTIs [s]
			ontime7	5713.6407732815	Sum of GTIs [s]
			ontime8	2489.1157827675	Sum of GTIs [s]
			ontime9	2381.8993377835	Sum of GTIs [s]
			l1events	1425755	Number of level 1 events

### 2.1.4 Events

	ccd 4	ccd 5	ccd 6	ccd 7	ccd 8	ccd 9		ccd 4	ccd 5	ccd 6	ccd 7	ccd 8	ccd 9
level 1 events	150669	373584	176748	383531	177642	163581	grade 0 events	75286	84736	86433	91151	86849	80081
rejected events	17578	40100	18255	27537	19939	17706		49%	22%	48%	23%	48%	48%
rejected %	11%	10%	10%	7%	11%	10%	grade 1 events	348	321	413	237	397	391
								0%	0%	0%	0%	0%	0%
							grade 2 events	23548	116207	27534	78720	27906	25764
								15%	31%	15%	20%	15%	15%
							grade 3 events	8146	22000	9967	36174	9814	8873
								5%	5%	5%	9%	5%	5%
							grade 4 events	8229	22180	9661	36053	9986	9002
								5%	5%	5%	9%	5%	5%
							grade 5 events	1158	8025	1442	5825	1496	1404
								0%	2%	0%	1%	0%	0%
							grade 6 events	17882	88361	24898	113896	23148	22155
								11%	23%	14%	29%	13%	13%
							grade 7 events	16072	31754	16400	21475	18046	15911
								10%	8%	9%	5%	10%	9%

## 2.2 Compared Parameters

Parameter	Planned	Actual	Parameter	Planned	Actual
Instrument	ACIS	ACIS	Obspar format version number	7	7
Detector	ACIS-456789	ACIS-456789	Obspar file type	PREDICTED	ACTUAL
Grating	NONE	NONE	Obspar update status	NONE	UPDATED
Data mode	FAINT	FAINT	On-chip summing requested	N	N
Observation mode	SECONDARY	SECONDARY	Subarray requested	NONE	NONE
[deg] Pointing RA	0	55.96086747446532	Alternating exposures requested	N	N
[deg] Pointing Dec	0	56.61891155392163	[s] Primary exposure time	0.000000	3.2
[deg] Pointing Roll	0.0	106.0110039781509			
[mm] SIM focus pos	-0.684267	-0.7809083437167272			
[mm] SIM defocus	0	0.7524282956875696			
[mm] SIM translation stage pos	-190.132523	250.466033080201			
[mm] SIM translation stage offset	0	-0.01005468664627074			
[s] Observation start time (MET)	115590255.769	115590255.00072			
Observation start date	2001-08-30T20:24:16	2001-08-30T20:24:15			
[s] Observation end time (MET)	115613623.72	115613622.95165			
Observation end date	2001-08-31T02:53:44	2001-08-31T02:53:42			
Read mode	TIMED	TIMED			

## **2.3 Star Slots**

## **2.4 FID Slots**

## A Summary

### A.1 Status

V&V Scientist	Jen Lauer
V&V Date (YYYY-MM-DD)	2012.09.26
V&V Edition	1
V&V Disposition and Status	OK
V&V Charge Time	5.7136407732815

### A.2 Comments