

V&V Reference Report

L2 ASCDS Version : 8.4.5

Observation 61329 - L2 Version 3
Chandra X-Ray Center

L2 Processing Date : Oct 1 2012

Contents

1	Front	2
2	OBI	3
2.1	OBI	3
2.1.1	Images	3
2.1.2	Bias	3
2.1.3	Parameters	4
2.1.4	Events	4
2.2	Compared Parameters	5
2.3	Star Slots	6
2.4	FID Slots	6
A	Summary	7
A.1	Status	7
A.2	Comments	7

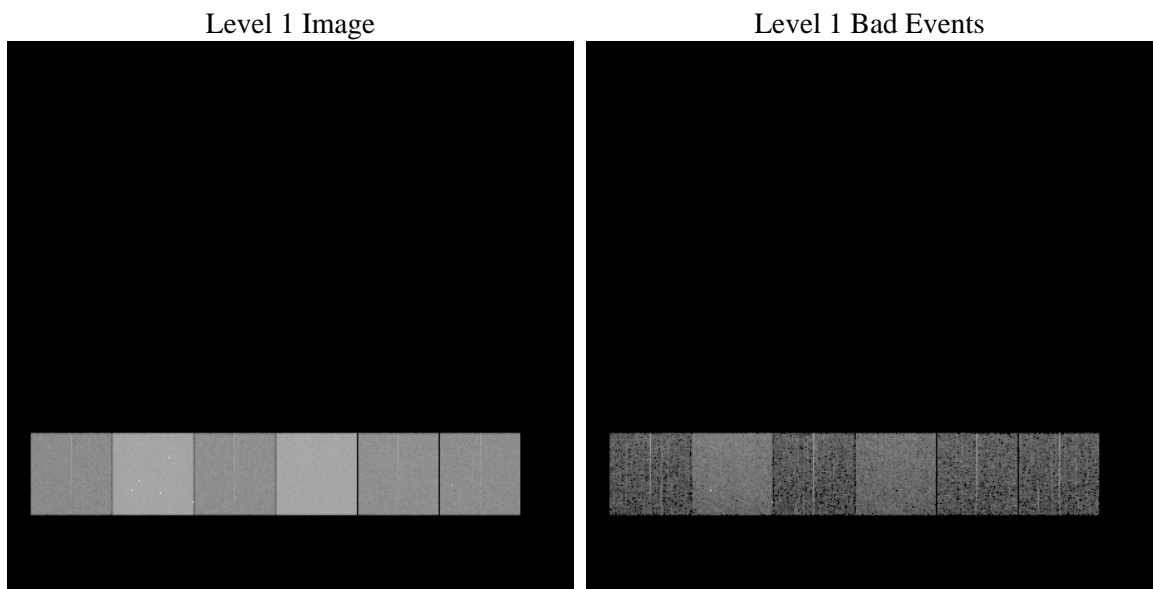
1 Front

seq_num	 	Sequence number
obs_id	61329	Observation id
title	ACIS-456789 diagnostics	Proposal title
observer	CHANDRA engineering request/realtime commanding	Principal investig
object	 	Source name
dtcycle	0	
cycle	P	events from which exps? Prim/Second/Both
ra_targ	0.0	Observer's specified target RA [deg]
dec_targ	0.0	Observer's specified target Dec [deg]
ra_nom	127.96728457933	Nominal RA [deg]
dec_nom	49.980549599126	Nominal Dec [deg]
roll_nom	190.01535998438	Nominal Roll [deg]
revision	3	Processing version of data
ontime	6397.7556652576	Sum of GTIs [s]
livetime	6316.7434307581	Livetime [s]
ontime4	2423.0625239462	Sum of GTIs [s]
ontime5	6811.4486613423	Sum of GTIs [s]
ontime6	2607.8424549699	Sum of GTIs [s]
ontime7	6397.7556652576	Sum of GTIs [s]
ontime8	2673.8553332537	Sum of GTIs [s]
ontime9	2521.5265930295	Sum of GTIs [s]
l2events	1202357	Number of level 2 events

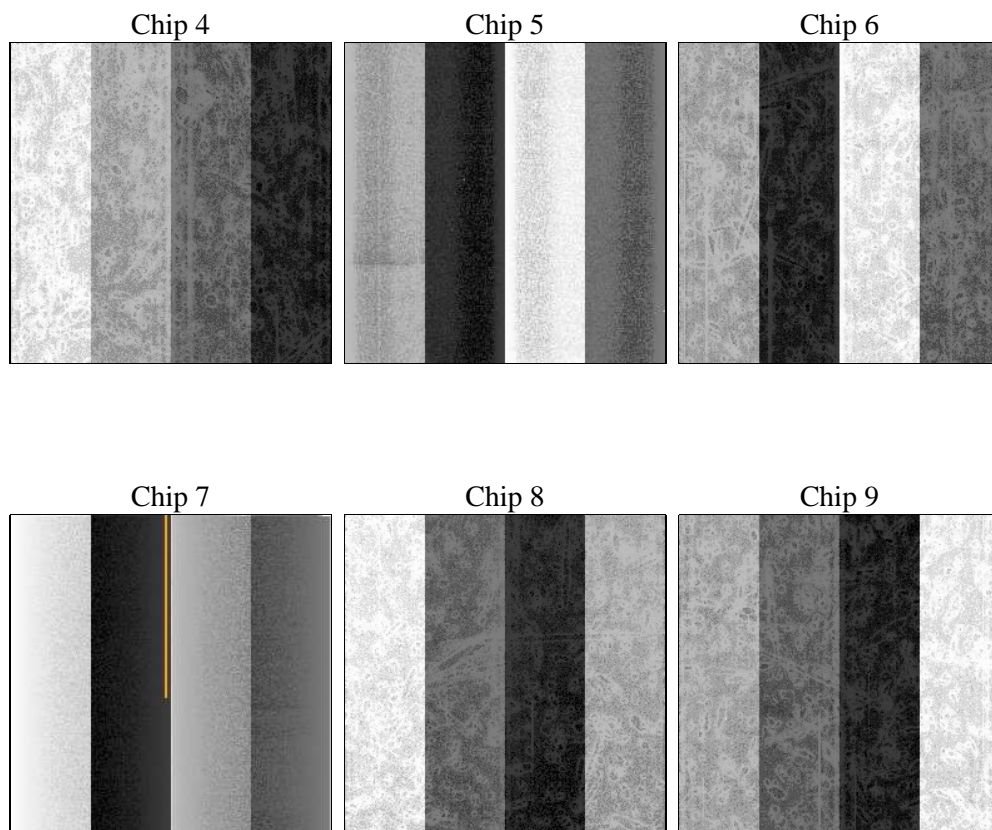
2 OBI

2.1 OBI

2.1.1 Images



2.1.2 Bias



2.1.3 Parameters

obi_num	1	Obi number	sched_exp_time	0.0	[s] Scheduled observation exposure time
ascdsver	8.4.5	Processing system revision	ontime	6397.7556652576	Sum of GTIs [s]
caldsver	4.5.2	 	ontime4	2423.0625239462	Sum of GTIs [s]
date	2012-10-01T12:06:59	Date and time of file creation	ontime5	6811.4486613423	Sum of GTIs [s]
revision	3	Processing version of data	ontime6	2607.8424549699	Sum of GTIs [s]
			ontime7	6397.7556652576	Sum of GTIs [s]
			ontime8	2673.8553332537	Sum of GTIs [s]
			ontime9	2521.5265930295	Sum of GTIs [s]
			l1events	1421406	Number of level 1 events

2.1.4 Events

	ccd 4	ccd 5	ccd 6	ccd 7	ccd 8	ccd 9		ccd 4	ccd 5	ccd 6	ccd 7	ccd 8	ccd 9
level 1 events	146109	387474	166558	391725	172419	157121	grade 0 events	72156	81353	80386	90089	83663	75584
rejected events	19318	48730	19411	33715	20711	19492		49%	20%	48%	22%	48%	48%
rejected %	13%	12%	11%	8%	12%	12%	grade 1 events	395	443	403	219	367	369
								0%	0%	0%	0%	0%	0%
							grade 2 events	22180	122887	25361	78661	26852	24380
								15%	31%	15%	20%	15%	15%
							grade 3 events	7639	20466	9075	36350	9593	8427
								5%	5%	5%	9%	5%	5%
							grade 4 events	7617	20474	9034	36126	9553	8413
								5%	5%	5%	9%	5%	5%
							grade 5 events	1187	9564	1465	6822	1600	1383
								0%	2%	0%	1%	0%	0%
							grade 6 events	17199	93564	23291	116784	22047	20825
								11%	24%	13%	29%	12%	13%
							grade 7 events	17736	38723	17543	26674	18744	17740
								12%	9%	10%	6%	10%	11%

2.2 Compared Parameters

Parameter	Planned	Actual	Parameter	Planned	Actual
Instrument	ACIS	ACIS	Obspar format version number	7	7
Detector	ACIS-456789	ACIS-456789	Obspar file type	PREDICTED	ACTUAL
Grating	NONE	NONE	Obspar update status	NONE	UPDATED
Data mode	FAINT	FAINT	On-chip summing requested	N	N
Observation mode	SECONDARY	SECONDARY	Subarray requested	NONE	NONE
[deg] Pointing RA	0	127.9672845793262	Alternating exposures requested	N	N
[deg] Pointing Dec	0	49.98054959912642	[s] Primary exposure time	0.000000	3.2
[deg] Pointing Roll	0.0	190.0153599843785			
[mm] SIM focus pos	-0.684267	-0.7809083437167272			
[mm] SIM defocus	0	0.7524282956875696			
[mm] SIM translation stage pos	-190.132523	250.466033080201			
[mm] SIM translation stage offset	0	-0.01005468664627074			
[s] Observation start time (MET)	128845164.748	128845163.97955			
Observation start date	2002-01-31T06:19:25	2002-01-31T06:19:23			
[s] Observation end time (MET)	128875740.499	128875739.73078			
Observation end date	2002-01-31T14:49:00	2002-01-31T14:48:59			
Read mode	TIMED	TIMED			

2.3 Star Slots

2.4 FID Slots

A Summary

A.1 Status

V&V Scientist	Beth Sundheim
V&V Date (YYYY-MM-DD)	2012.10.03
V&V Edition	1
V&V Disposition and Status	OK
V&V Charge Time	6.3977556652576

A.2 Comments