

# V&V Reference Report

## L2 ASCDS Version : 7.6.8.1

Observation 61329 - L2 Version 001  
Chandra X-Ray Center

L2 Processing Date : Aug 29 2006

## Contents

<b>1</b>	<b>Front</b>	<b>2</b>
<b>2</b>	<b>OBI</b>	<b>3</b>
2.1	OBI . . . . .	3
2.1.1	Images . . . . .	3
2.1.2	Bias . . . . .	3
2.1.3	Parameters . . . . .	4
2.1.4	Events . . . . .	4
2.2	Compared Parameters . . . . .	5
2.3	Aspect . . . . .	6
2.4	Star Slots . . . . .	8
2.5	FID Slots . . . . .	8
<b>A</b>	<b>Summary</b>	<b>9</b>
A.1	Status . . . . .	9
A.2	Comments . . . . .	9

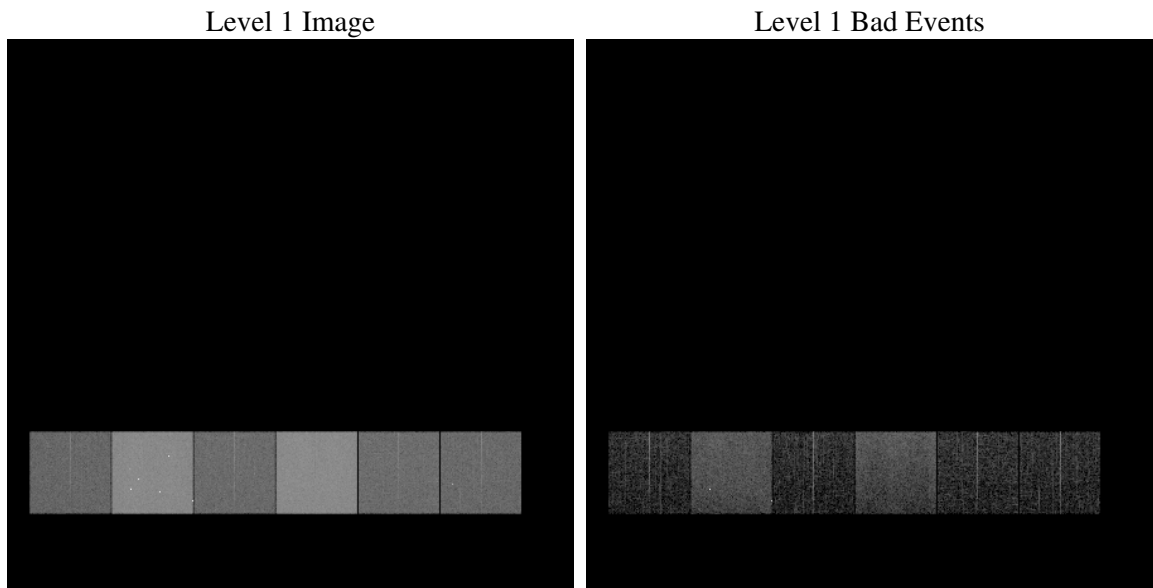
# 1 Front

seq_num	&#160
obs_id	61329
title	ACIS-456789 diagnostics
observer	CHANDRA engineering request/realtime commanding
object	&#160
dtcycle	0
cycle	P
ra_targ	0.0
dec_targ	0.0
ra_nom	127.96728457164
dec_nom	49.980549599902
roll_nom	190.0153599891
revision	2
ontime	6396.824023515
livetime	6315.8235860242
ontime4	2423.4871704131
ontime5	6811.7091478258
ontime6	2608.1850214303
ontime7	6396.824023515
ontime8	2673.0878515095
ontime9	2520.5539112836
l2events	1180090

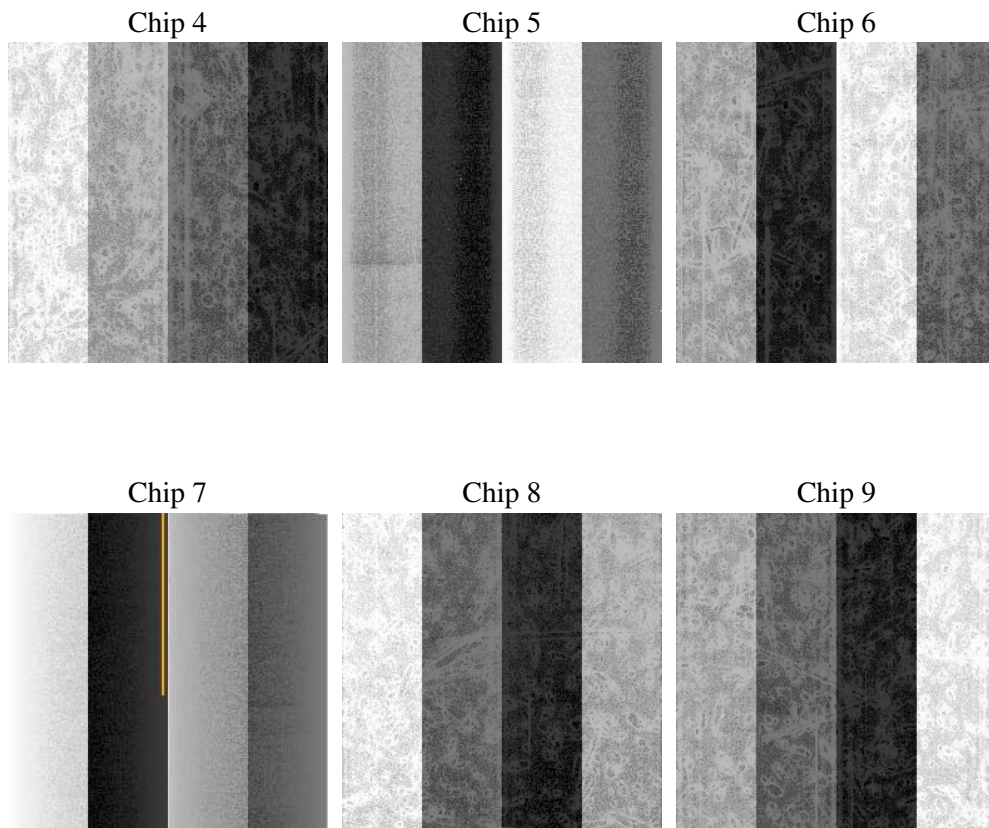
## 2 OBI

### 2.1 OBI

#### 2.1.1 Images



#### 2.1.2 Bias



### 2.1.3 Parameters

obi_num	1
ascdsver	7.6.8.1
caldsver	3.2.3
date	2006-08-30T01:19:19
revision	2

sched_exp_time	0.0
ontime	6397.7556652576
ontime4	2424.2956921607
ontime5	6812.5997495651
ontime6	2609.0345831811
ontime7	6397.7556652576
ontime8	2673.8553332537
ontime9	2521.5265930295
l1events	1421406

### 2.1.4 Events

	ccd 4	ccd 5	ccd 6	ccd 7	ccd 8	ccd 9
level 1 events	146109	387474	166558	391725	172419	157121
rejected events	19330	57746	19418	47230	20719	19498
rejected %	13%	14%	11%	12%	12%	12%

	ccd 4	ccd 5	ccd 6	ccd 7	ccd 8	ccd 9
grade 0 events	72077	42488	80321	61554	83635	75538
	49%	10%	48%	15%	48%	48%
grade 1 events	392	286	398	126	364	367
	0%	0%	0%	0%	0%	0%
grade 2 events	22259	156763	25428	105006	26880	24426
	15%	40%	15%	26%	15%	15%
grade 3 events	7622	10824	9061	25364	9579	8416
	5%	2%	5%	6%	5%	5%
grade 4 events	7599	10728	9027	24866	9544	8403
	5%	2%	5%	6%	5%	5%
grade 5 events	1189	7375	1465	6383	1597	1382
	0%	1%	0%	1%	0%	0%
grade 6 events	17222	108925	23303	127705	22062	20840
	11%	28%	13%	32%	12%	13%
grade 7 events	17749	50085	17555	40721	18758	17749
	12%	12%	10%	10%	10%	11%

## 2.2 Compared Parameters

Parameter	Planned	Actual	Parameter	Planned	Actual
Instrument	ACIS	ACIS	Obspar format version number	6	6
Detector	ACIS-456789	ACIS-456789	Obspar file type	PREDICTED	ACTUAL
Grating	NONE	NONE	Obspar update status	NONE	UPDATED
Data mode	FAINT	FAINT	On-chip summing requested	N	N
Observation mode	SECONDARY	SECONDARY	Subarray requested	NONE	NONE
Pointing RA	0	127.9672845716417	Alternating exposures requested	N	N
Pointing Dec	0	49.98054959990166	Primary exposure time	0.000000	3.2
Pointing Roll	0.0	190.0153599890985			
SIM focus pos (mm)	-0.684267	-0.7809083437167272			
SIM defocus (mm)	0	0.7524282956875696			
SIM translation stage pos (mm)	-190.132523	250.466033080201			
SIM translation stage offset (mm)	0	-0.01005468664627074			
Observation start time	128845164.748	128845163.97955			
Observation start date	2002-01-31T06:19:25	2002-01-31T06:19:23			
Observation end time	128875740.499	128875739.73078			
Observation end date	2002-01-31T14:49:00	2002-01-31T14:48:59			
Read mode	TIMED	TIMED			

## 2.3 Aspect



## **2.4 Star Slots**

## **2.5 FID Slots**



# A Summary

## A.1 Status

V&V Scientist	Jen Lauer
V&V Date (YYYY-MM-DD)	2006.08.30
V&V Edition	1
V&V Disposition and Status	OK
V&V Charge Time	6.39682402

## A.2 Comments

The ACIS focal plane temperature was above calibration limits for all but the first three ksec of the observation.