

V&V Reference Report

L2 ASCDS Version : 7.6.7

Observation 6119 - L2 Version 002
Chandra X-Ray Center

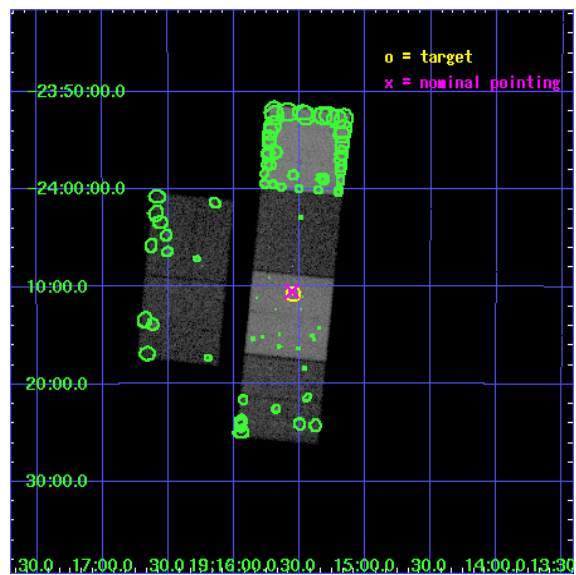
L2 Processing Date: Mar 4 2006

Contents

1	Front	2
2	OBI	3
2.1	OBI	3
2.1.1	Images	3
2.1.2	Bias	3
2.1.3	Parameters	4
2.1.4	Events	4
2.2	Compared Parameters	5
2.3	Aspect	6
2.4	Star Slots	9
2.4.1	Slot 3	9
2.4.2	Slot 4	10
2.4.3	Slot 5	11
2.4.4	Slot 6	12
2.5	FID Slots	13
2.5.1	Slot 0	13
2.5.2	Slot 1	14
2.5.3	Slot 2	15
3	Point Sources	16
A	Summary	17
A.1	Status	17
A.2	Comments	17

1 Front

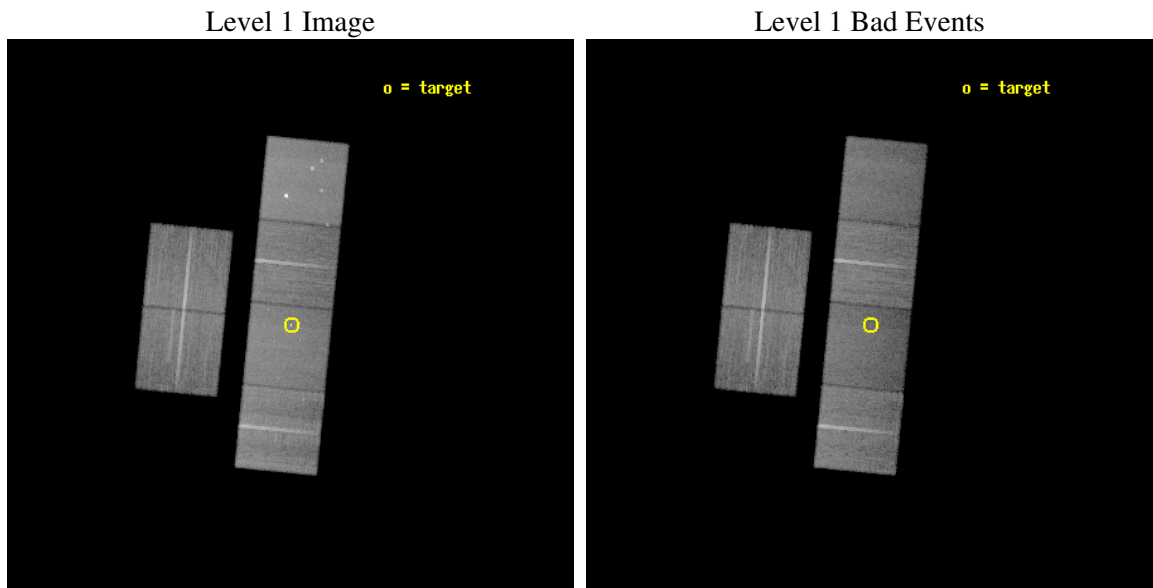
seq_num	200366
obs_id	6119
title	Planet-Induced Activity Enhancements in the HD 179949 System
observer	Dr. Steven Saar
object	HD 179949
dtcycle	0
cycle	P
ra_targ	288.888333
dec_targ	-24.179361
ra_nom	288.8897429768
dec_nom	-24.175209470153
roll_nom	95.657204368665
revision	2
ontime	30025.599888146
livetime	29645.397663117
ontime2	30025.599888146
ontime3	30022.358887911
ontime5	30025.599888146
ontime6	30025.599888146
ontime7	30025.599888146
ontime8	30012.635897189
l2events	260560



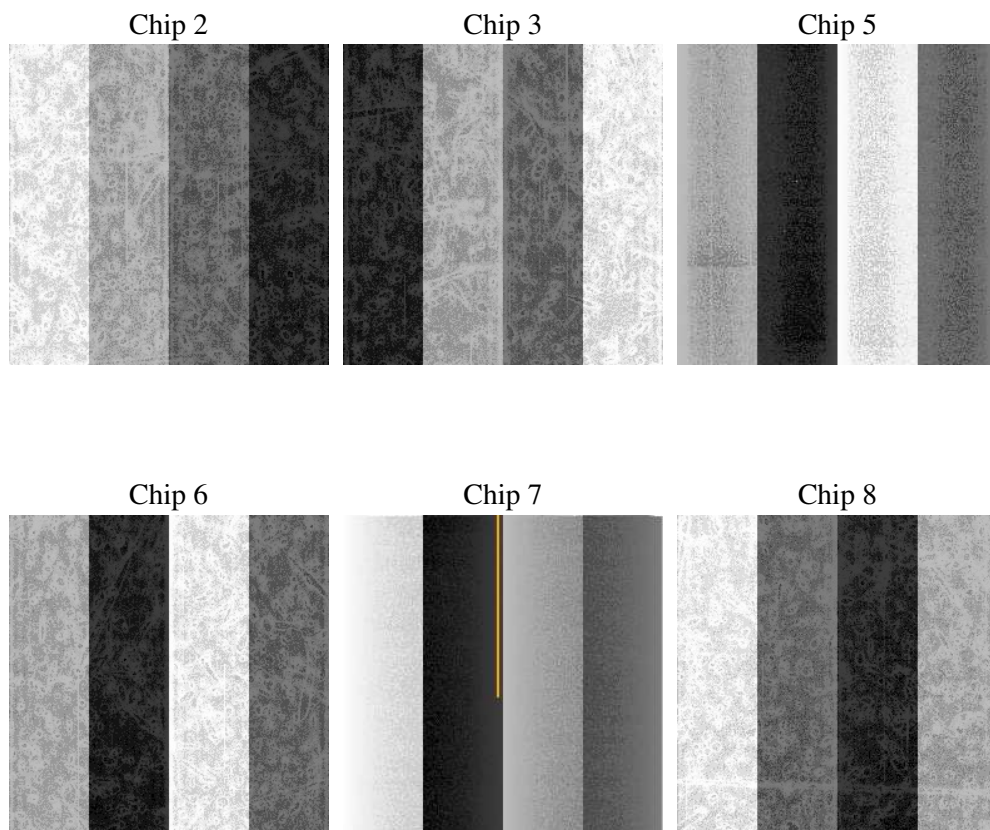
2 OBI

2.1 OBI

2.1.1 Images



2.1.2 Bias



2.1.3 Parameters

obi_num	2
ascdsver	7.6.7
caldsver	3.2.1
date	2006-03-04T05:35:16
revision	2

sched_exp_time	30000.000000
ontime	31360.022749722
ontime2	31360.022729814
ontime3	31356.781729579
ontime5	31360.022749722
ontime6	31360.022729814
ontime7	31360.022749722
ontime8	31347.058738858
l1events	1266205

2.1.4 Events

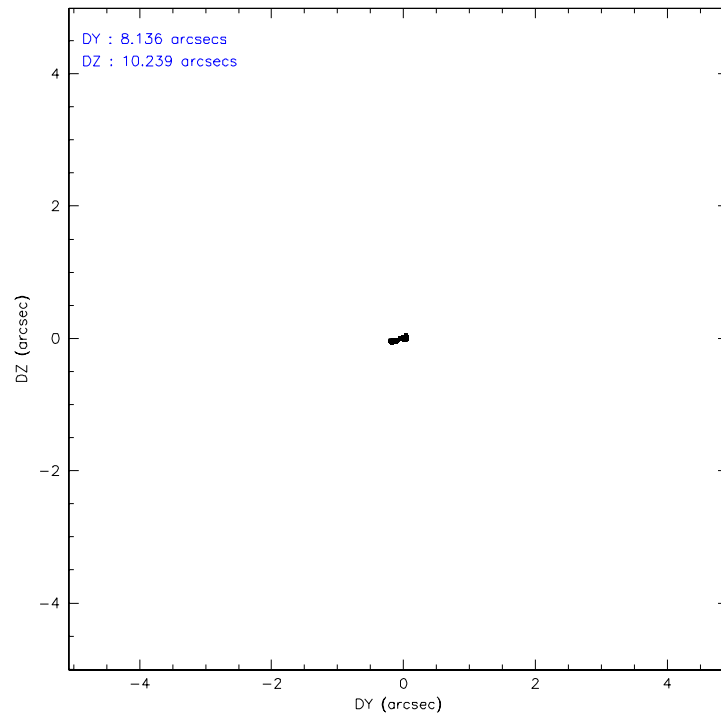
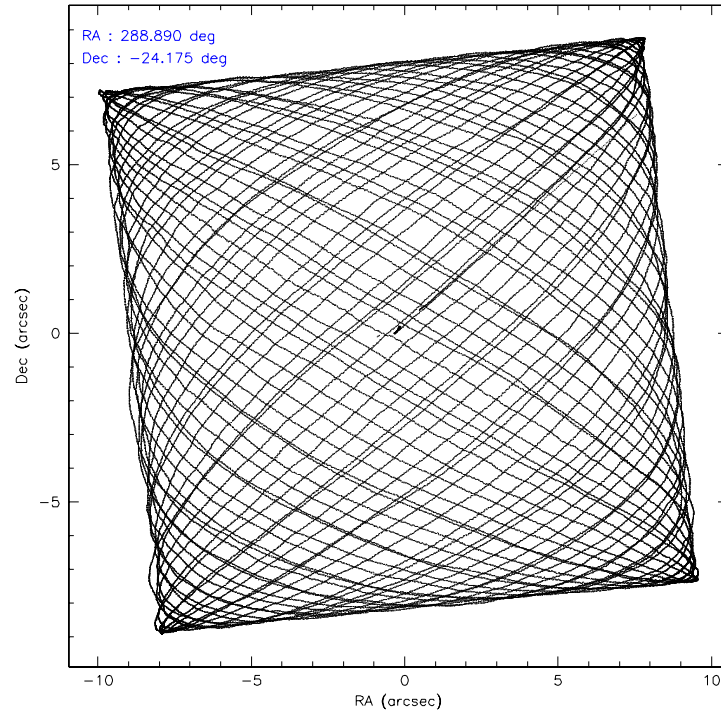
	ccd 2	ccd 3	ccd 5	ccd 6	ccd 7	ccd 8
level 1 events	192944	180163	258756	190715	212249	231378
rejected events	175143	162789	138399	171434	124932	179886
rejected %	90%	90%	53%	89%	58%	77%

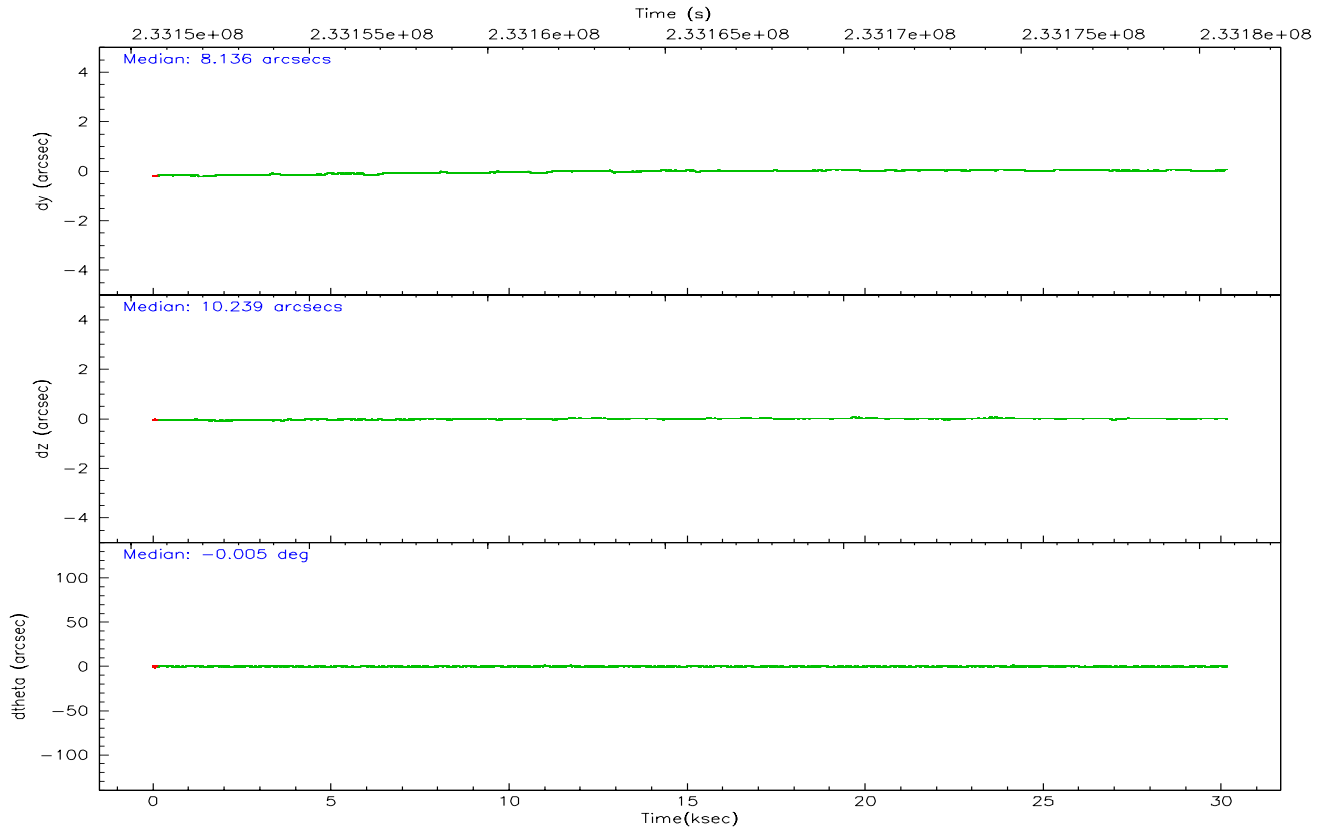
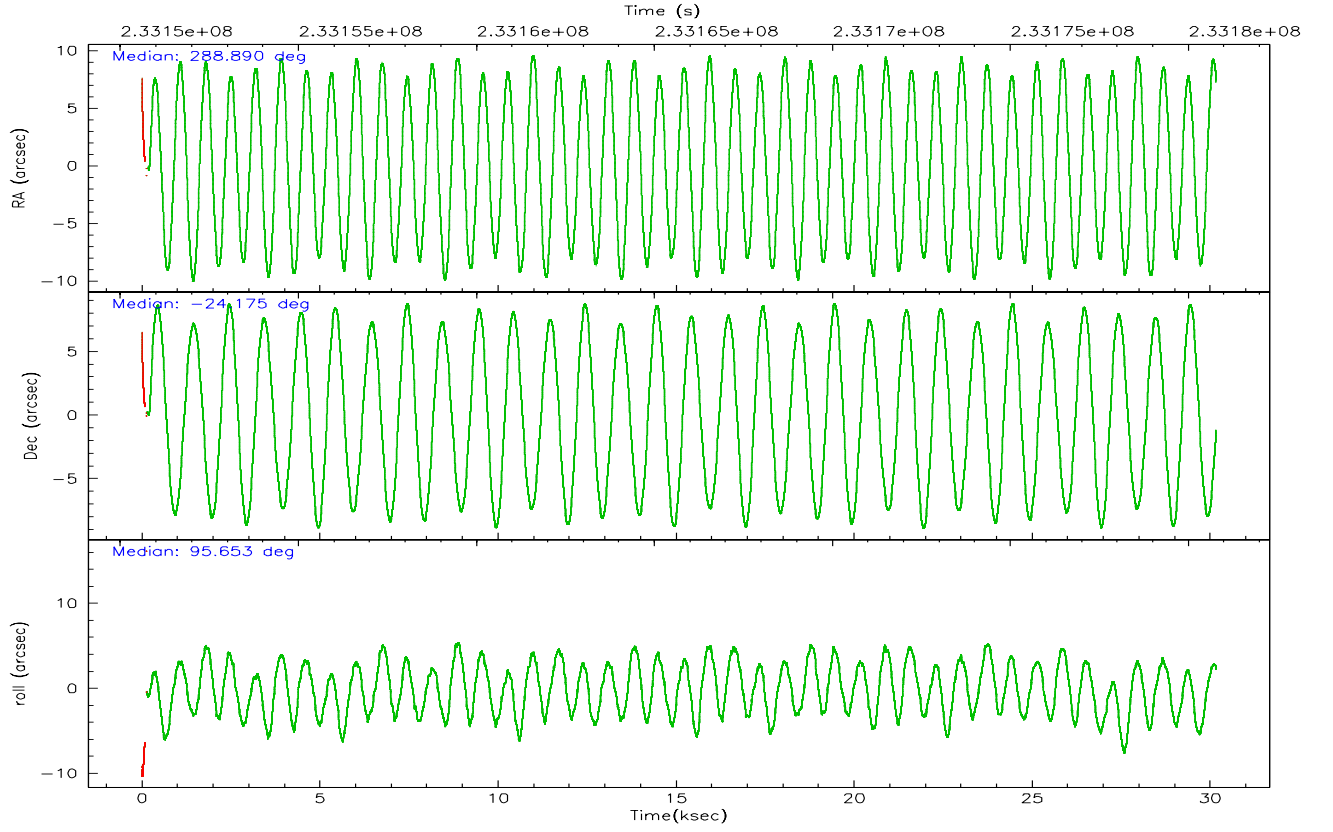
	ccd 2	ccd 3	ccd 5	ccd 6	ccd 7	ccd 8
grade 0 events	6772	6953	14350	8200	6643	17306
	3%	3%	5%	4%	3%	7%
grade 1 events	100	115	282	161	141	185
	0%	0%	0%	0%	0%	0%
grade 2 events	4223	3768	38100	4116	22875	12193
	2%	2%	14%	2%	10%	5%
grade 3 events	2075	1979	3127	2269	5482	5796
	1%	1%	1%	1%	2%	2%
grade 4 events	2116	1977	3023	2120	5304	5399
	1%	1%	1%	1%	2%	2%
grade 5 events	6313	7295	13370	7798	15708	10553
	3%	4%	5%	4%	7%	4%
grade 6 events	3369	3458	68158	4172	51176	14247
	1%	1%	26%	2%	24%	6%
grade 7 events	167976	154618	118346	161879	104920	165699
	87%	85%	45%	84%	49%	71%

2.2 Compared Parameters

Parameter	Planned	Actual	Parameter	Planned	Actual
Instrument	ACIS	ACIS	Obspar format version number	6	6
Detector	ACIS-235678	ACIS-235678	Obspar file type	PREDICTED	ACTUAL
Grating	NONE	NONE	Obspar update status	NONE	UPDATED
Data mode	VFAINT	VFAINT	On-chip summing requested	N	N
Observation mode	POINTING	POINTING	Subarray requested	NONE	NONE
Pointing RA	288.907458	288.8897429768022	Alternating exposures requested	N	N
Pointing Dec	-24.197101	-24.17520947015323	Primary exposure time	0.000000	3.2
Pointing Roll	95.507835	95.65720436866533			
SIM focus pos (mm)	-0.684267	-0.6828225247311905			
SIM defocus (mm)	0	0.001444936568705701			
SIM translation stage pos (mm)	-190.132523	-190.1400660498719			
SIM translation stage offset (mm)	0	0.00754346686406393			
Phase constraints	Y	Y			
Phase period	3.092455	3.092455			
Phase epoch	52891.020000	52891.020000			
Phase start	0.940000	0.940000			
Phase end	0.060000	0.060000			
Phase start error	0.030000	0.030000			
Phase end error	0.030000	0.030000			
Observation start time	233150777.184000	233149118.75365			
Observation start date	2005-05-22T12:05:13	2005-05-22T11:38:38			
Observation end time	233180777.184000	233181519.51762			
Observation end date	2005-05-22T20:25:13	2005-05-22T20:38:39			
Read mode	TIMED	TIMED			

2.3 Aspect



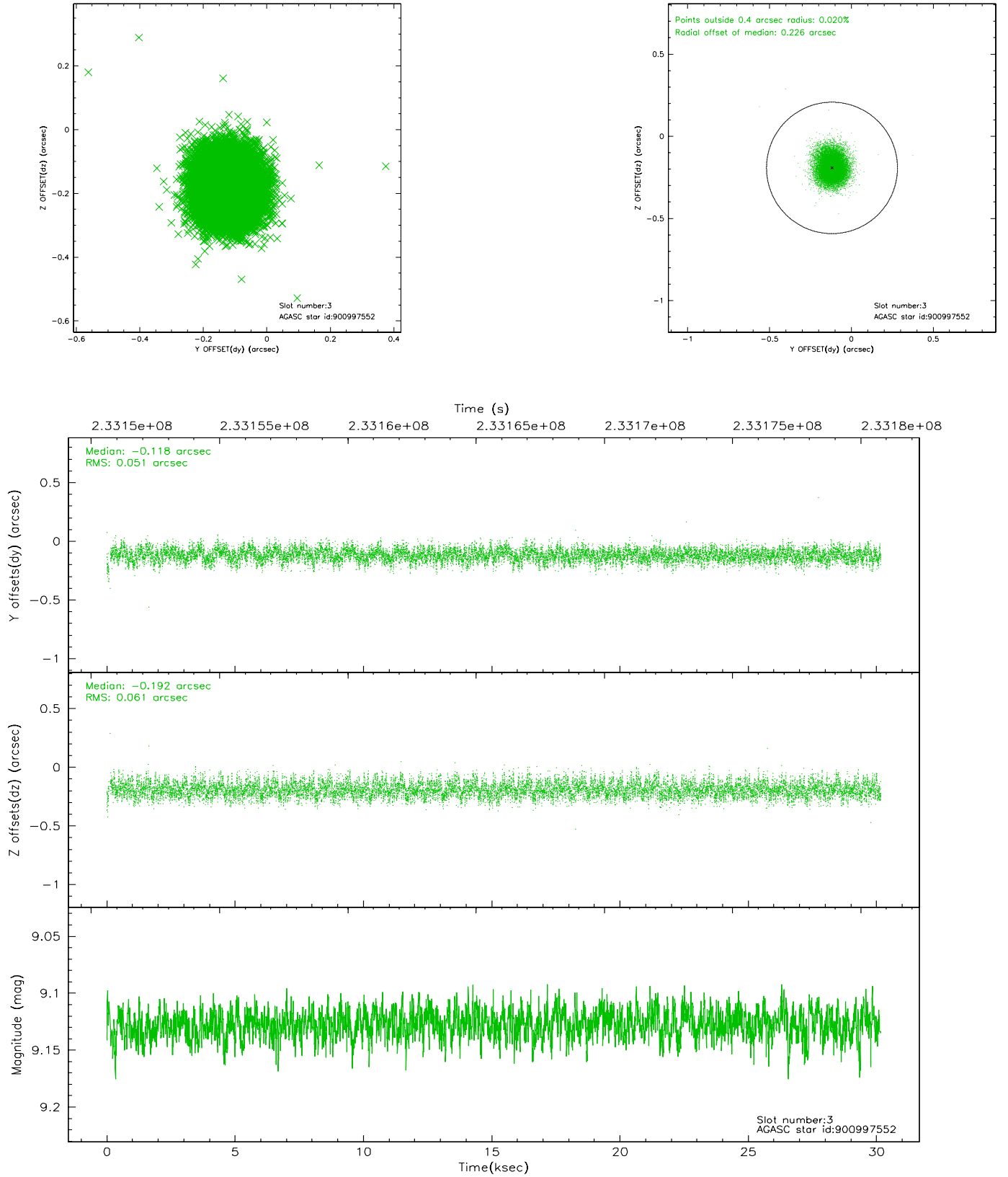


Slot Statistics

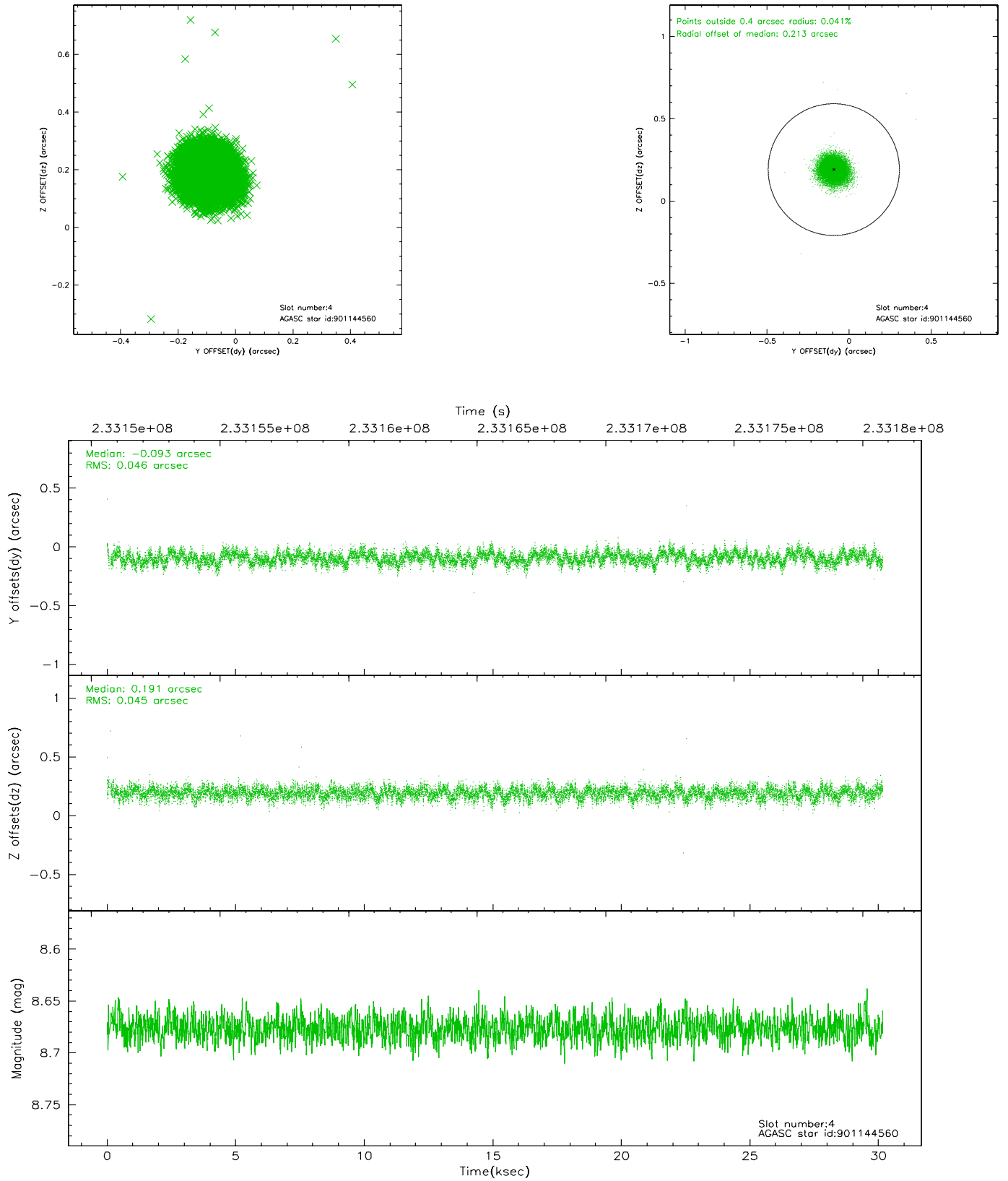
slot	status	id	mag	n_pts	med_dy	med_dz	dr1	dr2	ra	dec	mean_y	mean_z
0	FID	ACIS-S-2	7.10	7343	-0.029	0.004	0.007	0.012	0.000000	0.000000	-760.87	-1731.50
1	FID	ACIS-S-4	7.20	7344	0.080	0.013	0.007	0.013	0.000000	0.000000	2152.43	176.99
2	FID	ACIS-S-5	7.23	7343	-0.082	-0.008	0.007	0.012	0.000000	0.000000	-1813.72	170.62
3	GUIDE	900997552	9.13	14679	-0.118	-0.192	0.084	0.136	288.312519	-24.029579	783.88	1889.75
4	GUIDE	901144560	8.68	14684	-0.093	0.191	0.069	0.109	289.333664	-23.842375	1134.60	-1518.68
5	GUIDE	901514880	8.92	14621	0.111	-0.194	0.064	0.104	288.396412	-24.524459	-1015.33	1779.27
6	GUIDE	901647096	9.15	14680	0.102	0.198	0.087	0.140	289.707413	-24.700499	-2062.15	-2429.32
7	MONITOR		0.00	0	0.000	0.000	0.000	0.000	0.000000	0.000000	0.00	0.00

2.4 Star Slots

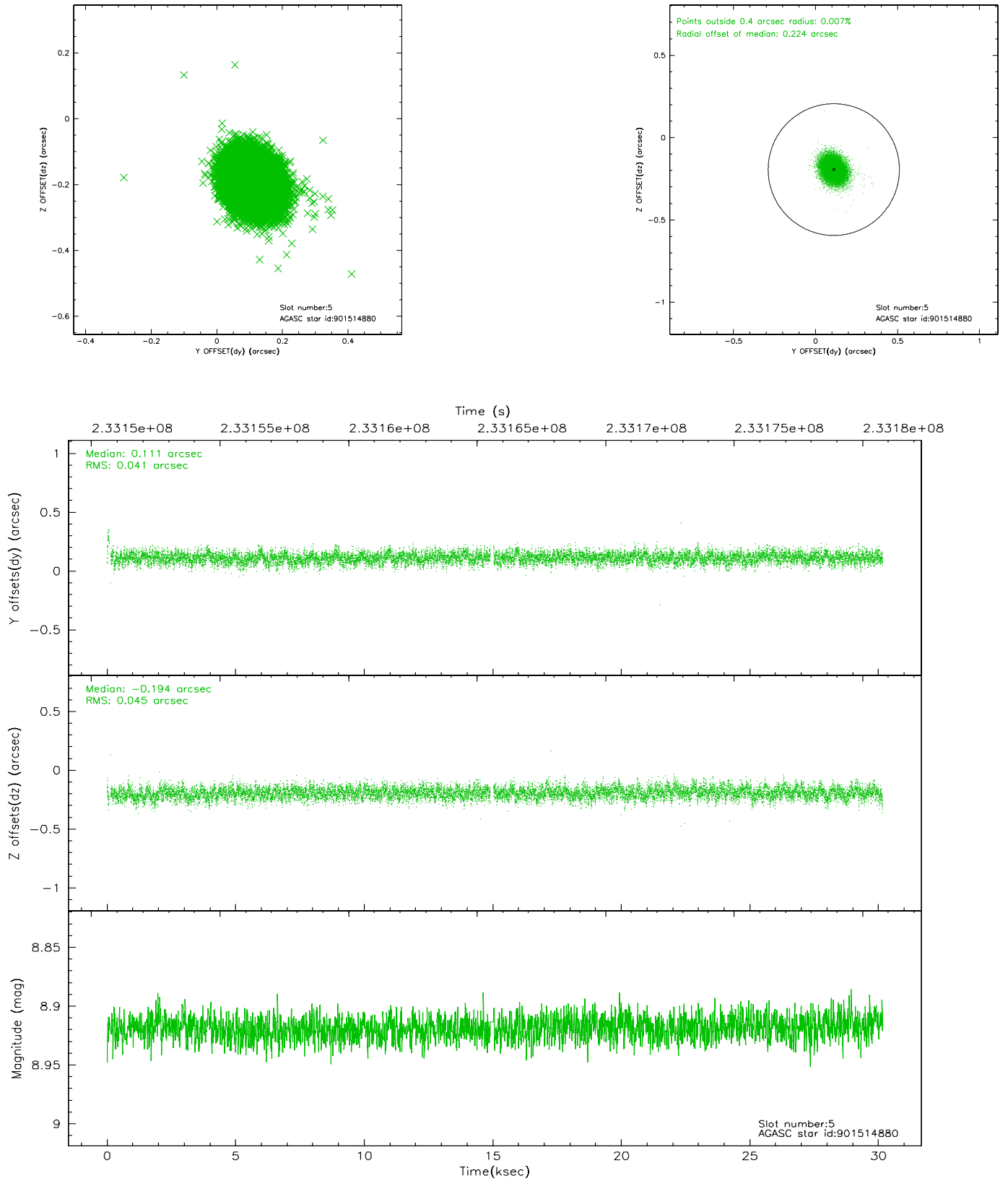
2.4.1 Slot 3



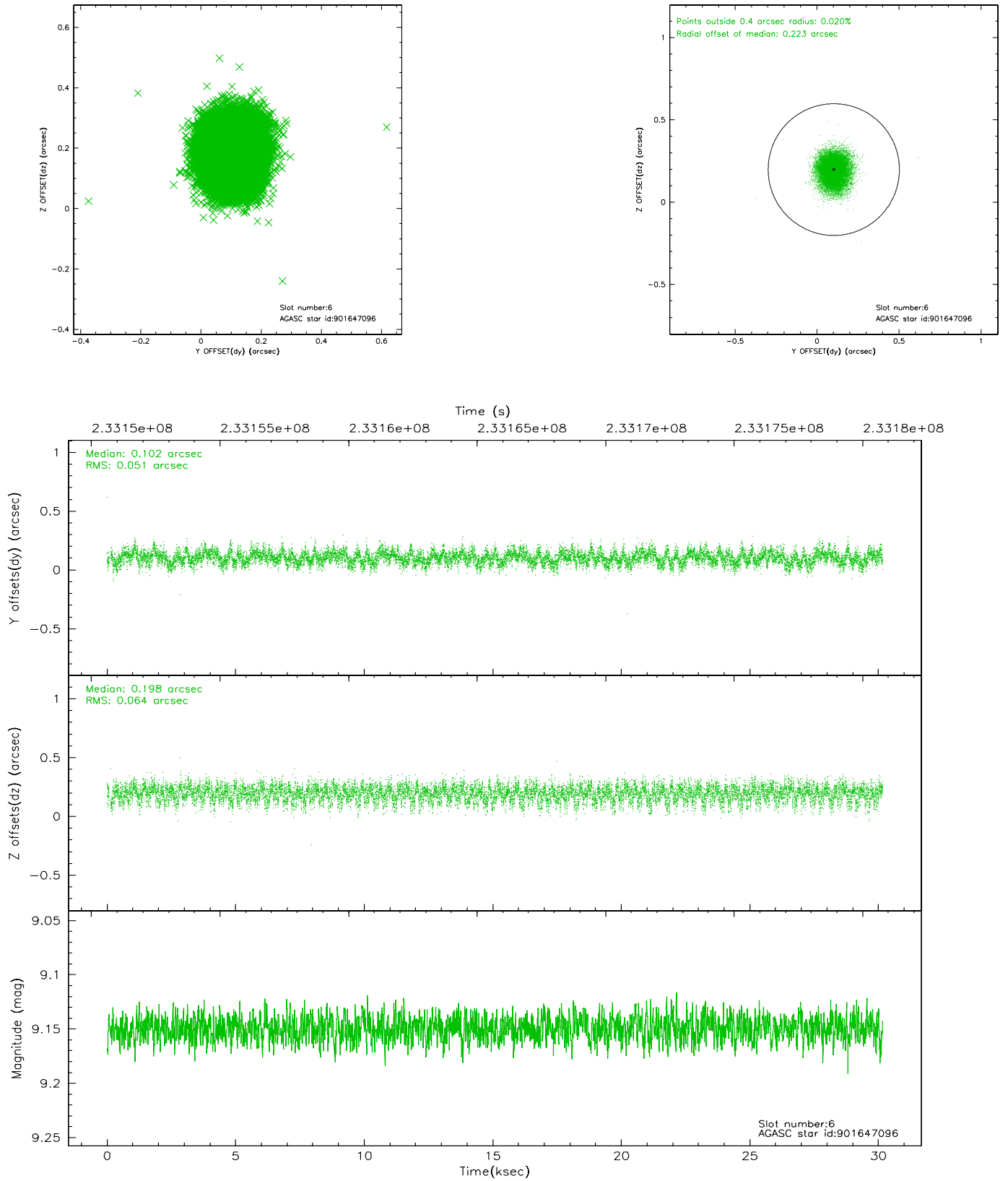
2.4.2 Slot 4



2.4.3 Slot 5

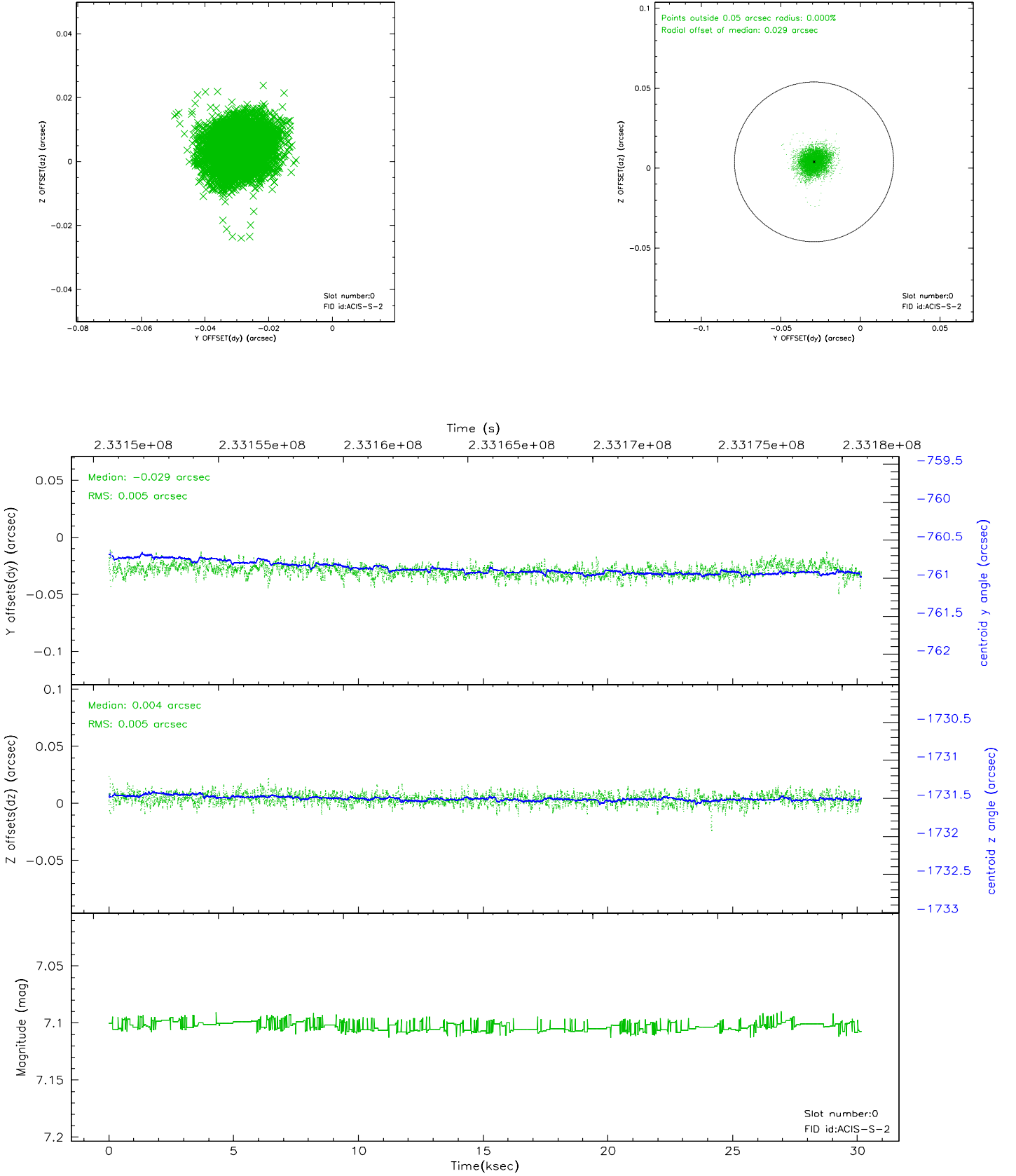


2.4.4 Slot 6

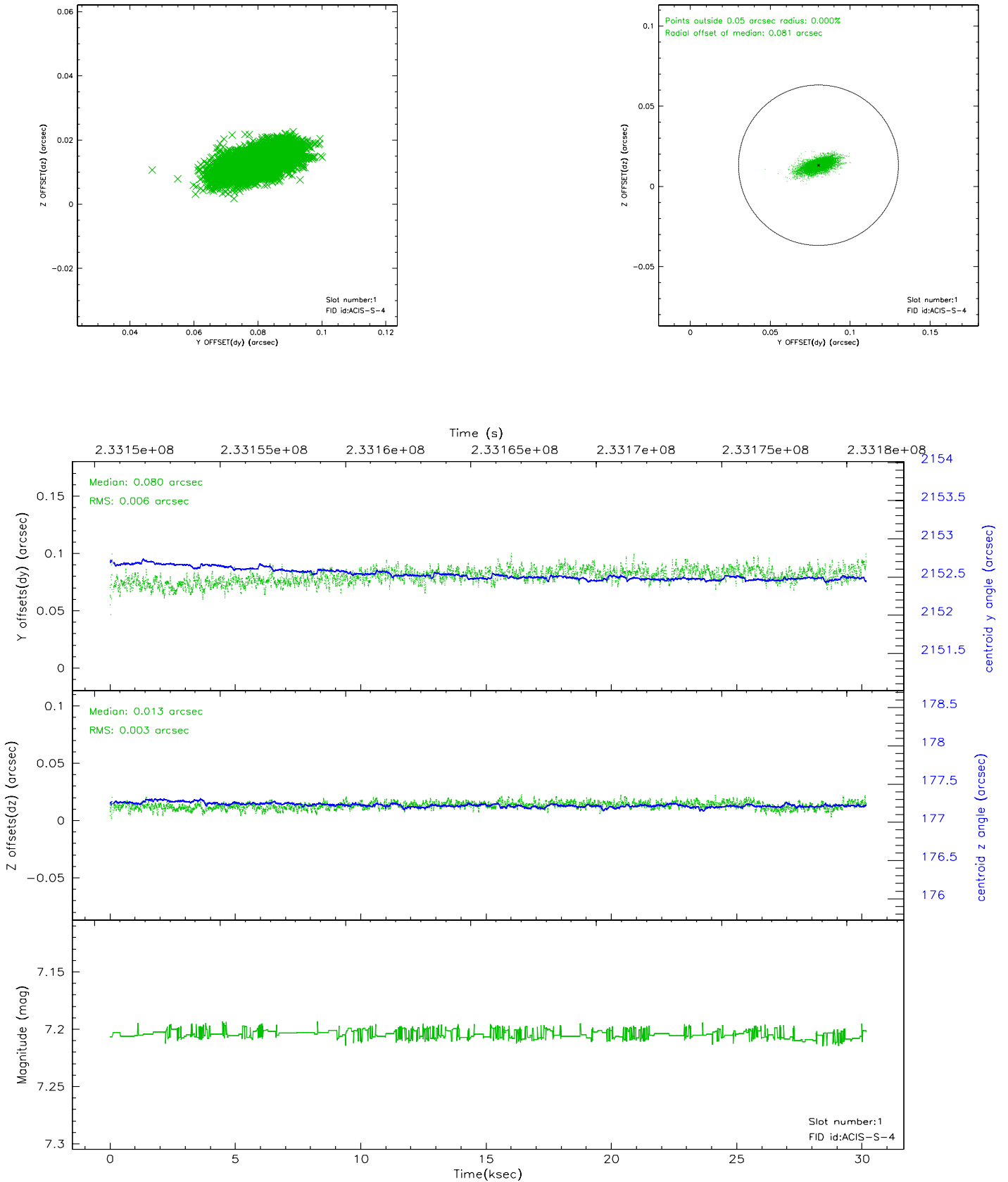


2.5 FID Slots

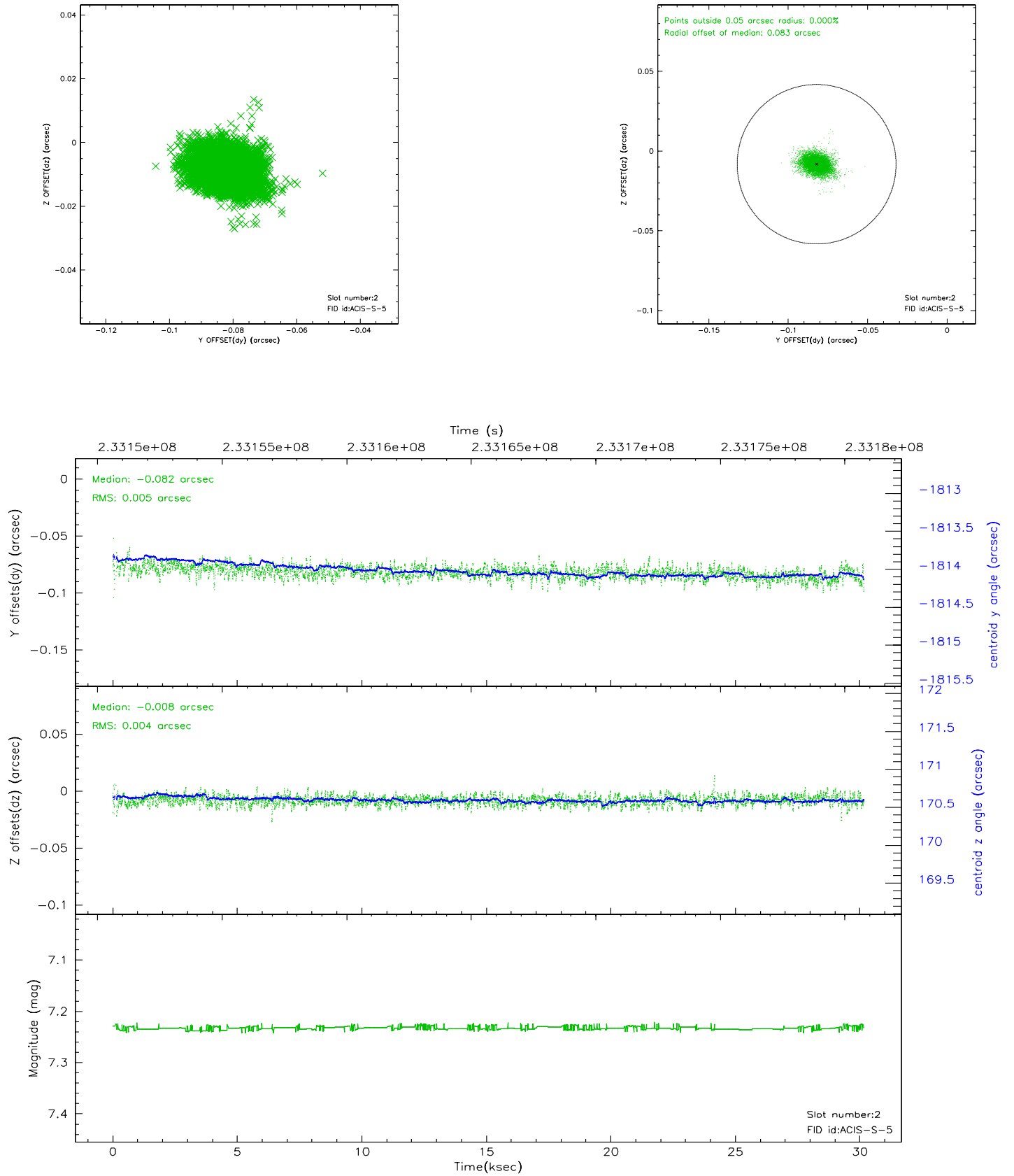
2.5.1 Slot 0



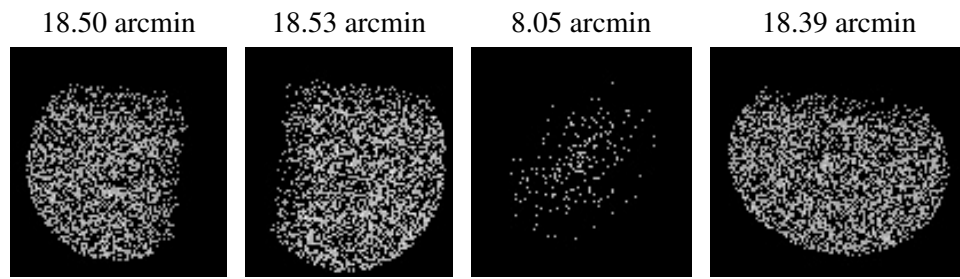
2.5.2 Slot 1



2.5.3 Slot 2



3 Point Sources



A Summary

A.1 Status

V&V Scientist	Beth Sundheim
V&V Date (YYYY-MM-DD)	2006.03.05
V&V Edition	1
V&V Disposition and Status	OK
V&V Charge Time	30.02559

A.2 Comments