

V&V Reference Report

L2 ASCDS Version : 8.4.5

Observation 61109 - L2 Version 3
Chandra X-Ray Center

L2 Processing Date : Oct 12 2012

Contents

1	Front	2
2	OBI	3
2.1	OBI	3
2.1.1	Images	3
2.1.2	Bias	3
2.1.3	Parameters	4
2.1.4	Events	4
2.2	Compared Parameters	5
2.3	Star Slots	6
2.4	FID Slots	6
A	Summary	7
A.1	Status	7
A.2	Comments	7

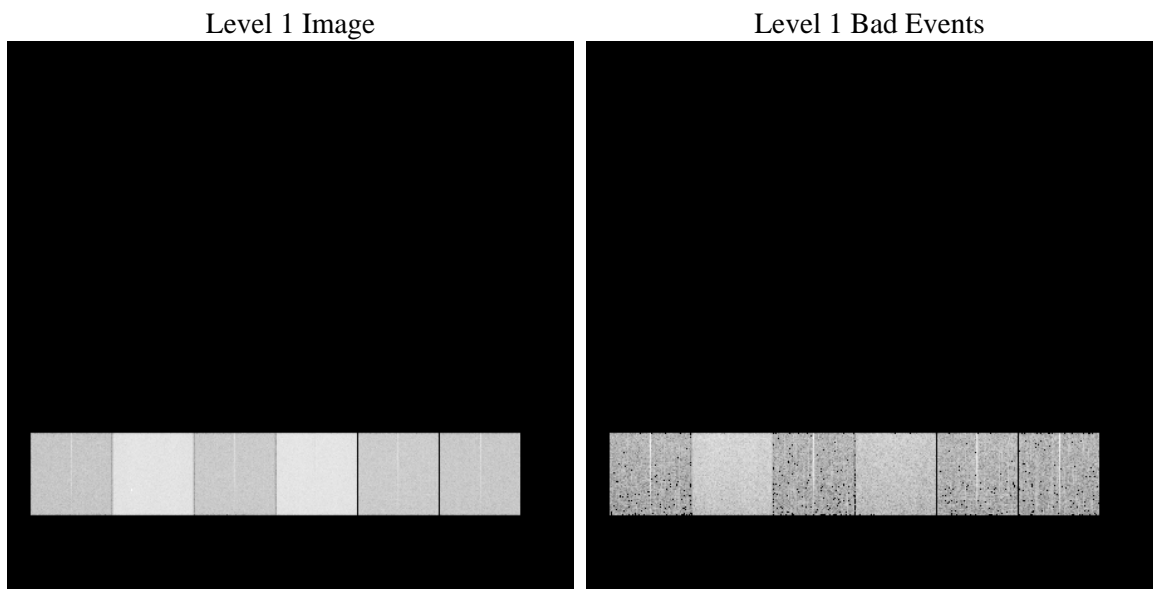
1 Front

seq_num	 	Sequence number
obs_id	61109	Observation id
title	ACIS-456789 diagnostics	Proposal title
observer	CHANDRA engineering request/realtime commanding	Principal investig
object	 	Source name
dtcycle	0	
cycle	P	events from which exps? Prim/Second/Both
ra_targ	0.0	Observer's specified target RA [deg]
dec_targ	0.0	Observer's specified target Dec [deg]
ra_nom	176.50643770933	Nominal RA [deg]
dec_nom	1.9721196613834	Nominal Dec [deg]
roll_nom	250.14811924285	Nominal Roll [deg]
revision	3	Processing version of data
ontime	7920.0928660035	Sum of GTIs [s]
livetime	7819.8038812268	Livetime [s]
ontime4	2802.4378275573	Sum of GTIs [s]
ontime5	8419.199968636	Sum of GTIs [s]
ontime6	3048.7149799168	Sum of GTIs [s]
ontime7	7920.0928660035	Sum of GTIs [s]
ontime8	3142.8929069042	Sum of GTIs [s]
ontime9	2935.1557094455	Sum of GTIs [s]
l2events	1300044	Number of level 2 events

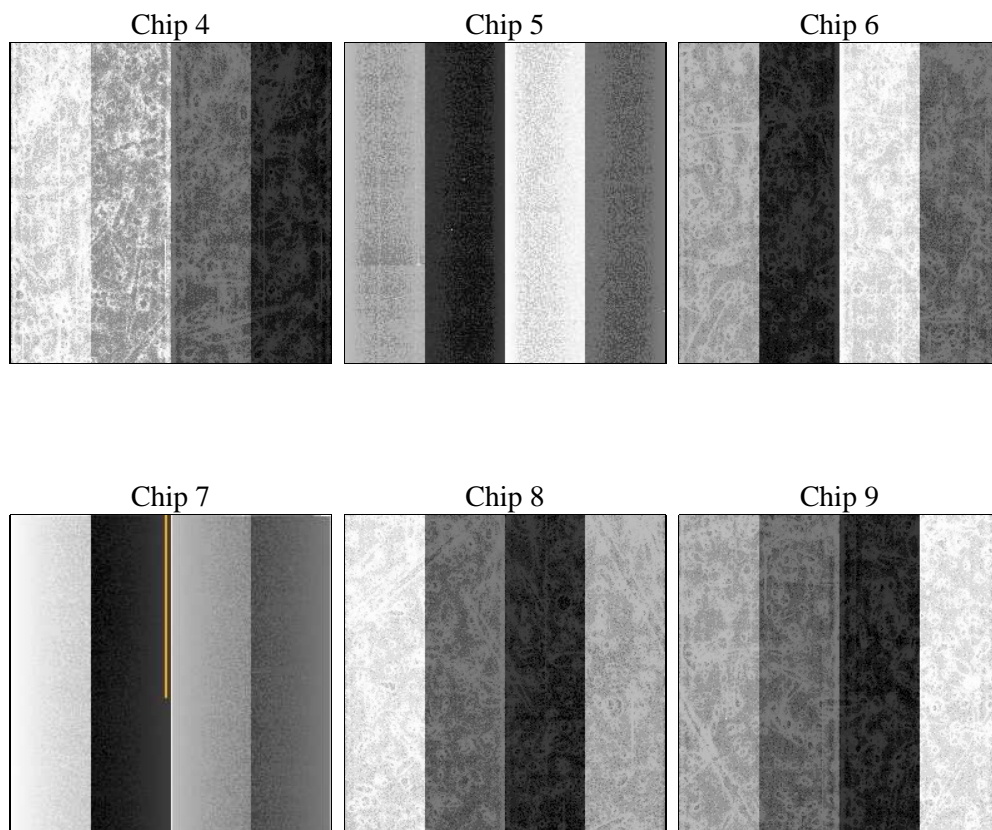
2 OBI

2.1 OBI

2.1.1 Images



2.1.2 Bias



2.1.3 Parameters

obi_num	0	Obi number	sched_exp_time	0.0	[s] Scheduled observation exposure time
ascdsver	8.4.5	Processing system revision	ontime	7920.0928660035	Sum of GTIs [s]
caldsver	4.5.2	 	ontime4	2802.4378275573	Sum of GTIs [s]
date	2012-10-12T02:45:46	Date and time of file creation	ontime5	8419.199968636	Sum of GTIs [s]
revision	3	Processing version of data	ontime6	3048.7149799168	Sum of GTIs [s]
			ontime7	7920.0928660035	Sum of GTIs [s]
			ontime8	3142.8929069042	Sum of GTIs [s]
			ontime9	2935.1557094455	Sum of GTIs [s]
			l1events	1558854	Number of level 1 events

2.1.4 Events

	ccd 4	ccd 5	ccd 6	ccd 7	ccd 8	ccd 9		ccd 4	ccd 5	ccd 6	ccd 7	ccd 8	ccd 9
level 1 events	154775	428501	177680	444816	187070	166012	grade 0 events	73809	77886	84498	100423	88769	78216
rejected events	23728	61728	23773	44563	26567	23893		47%	18%	47%	22%	47%	47%
rejected %	15%	14%	13%	10%	14%	14%	grade 1 events	346	260	393	266	433	406
								0%	0%	0%	0%	0%	0%
							grade 2 events	24206	141609	26921	89080	28629	25412
								15%	33%	15%	20%	15%	15%
							grade 3 events	7865	21066	9375	40172	10094	8743
								5%	4%	5%	9%	5%	5%
							grade 4 events	7812	20627	9337	39612	9796	8682
								5%	4%	5%	8%	5%	5%
							grade 5 events	1369	10288	1628	8294	1800	1647
								0%	2%	0%	1%	0%	0%
							grade 6 events	18106	107480	24425	132927	24063	21674
								11%	25%	13%	29%	12%	13%
							grade 7 events	21262	49285	21103	34042	23486	21232
								13%	11%	11%	7%	12%	12%

2.2 Compared Parameters

Parameter	Planned	Actual	Parameter	Planned	Actual
Instrument	ACIS	ACIS	Obspar format version number	7	7
Detector	ACIS-456789	ACIS-456789	Obspar file type	PREDICTED	ACTUAL
Grating	NONE	NONE	Obspar update status	NONE	UPDATED
Data mode	FAINT	FAINT	On-chip summing requested	N	N
Observation mode	SECONDARY	SECONDARY	Subarray requested	NONE	NONE
[deg] Pointing RA	0	176.5064377093338	Alternating exposures requested	N	N
[deg] Pointing Dec	0	1.972119661383351	[s] Primary exposure time	0.000000	3.2
[deg] Pointing Roll	0.0	250.1481192428516			
[mm] SIM focus pos	-0.684267	-0.7809083437167272			
[mm] SIM defocus	0	0.7524282956875696			
[mm] SIM translation stage pos	-190.132523	250.466033080201			
[mm] SIM translation stage offset	0	-0.01005468664627074			
[s] Observation start time (MET)	143728419.81	143728418.78532			
Observation start date	2002-07-22T12:33:40	2002-07-22T12:33:38			
[s] Observation end time (MET)	143750623.361	143750622.33623			
Observation end date	2002-07-22T18:43:43	2002-07-22T18:43:42			
Read mode	TIMED	TIMED			

2.3 Star Slots

2.4 FID Slots

A Summary

A.1 Status

V&V Scientist	Beth Sundheim
V&V Date (YYYY-MM-DD)	2012.10.22
V&V Edition	1
V&V Disposition and Status	OK
V&V Charge Time	7.9200928660035

A.2 Comments