

# V&V Reference Report

## L2 ASCDS Version : 7.6.9

Observation 61109 - L2 Version 001  
Chandra X-Ray Center

L2 Processing Date : Sep 26 2006

## Contents

<b>1</b>	<b>Front</b>	<b>2</b>
<b>2</b>	<b>OBI</b>	<b>3</b>
2.1	OBI . . . . .	3
2.1.1	Images . . . . .	3
2.1.2	Bias . . . . .	3
2.1.3	Parameters . . . . .	4
2.1.4	Events . . . . .	4
2.2	Compared Parameters . . . . .	5
2.3	Aspect . . . . .	6
2.4	Star Slots . . . . .	8
2.5	FID Slots . . . . .	8
<b>A</b>	<b>Summary</b>	<b>9</b>
A.1	Status . . . . .	9
A.2	Comments . . . . .	9

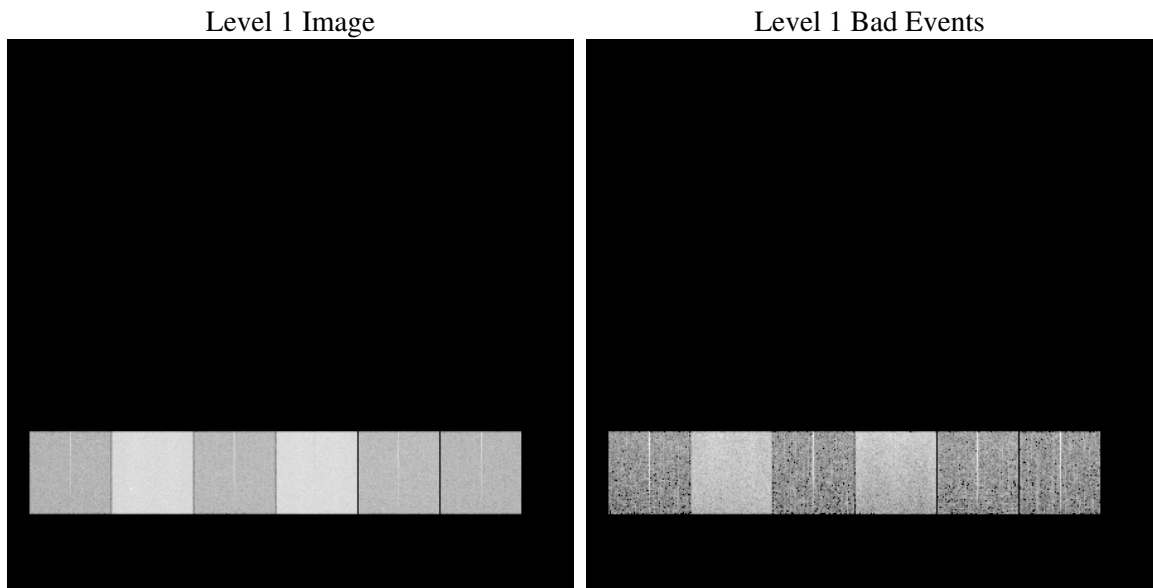
# 1 Front

seq_num	&#160
obs_id	61109
title	ACIS-456789 diagnostics
observer	CHANDRA engineering request/realtime commanding
object	&#160
dtcycle	0
cycle	P
ra_targ	0.0
dec_targ	0.0
ra_nom	176.50643768916
dec_nom	1.9721196802452
roll_nom	250.14811924559
revision	2
ontime	7920.0928660035
livetime	7819.8038812268
ontime4	2800.8378275633
ontime5	8419.199968636
ontime6	3047.1149799228
ontime7	7920.0928660035
ontime8	3142.8929069042
ontime9	2933.5557094514
l2events	1274666

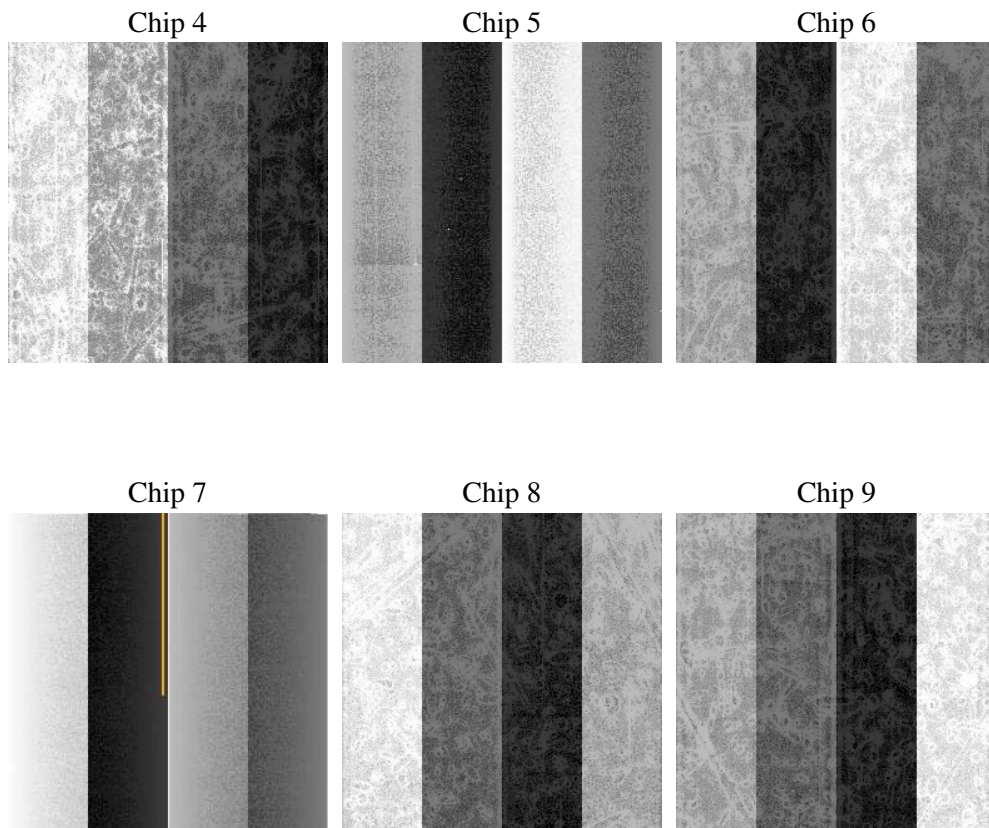
## 2 OBI

### 2.1 OBI

#### 2.1.1 Images



#### 2.1.2 Bias



### 2.1.3 Parameters

obi_num	0
ascdsver	7.6.9
caldbver	3.2.3
date	2006-09-26T21:01:04
revision	2

sched_exp_time	0.0
ontime	7959.8968349695
ontime4	2819.7017723322
ontime5	8462.2449577153
ontime6	3062.7789247036
ontime7	7959.8968349695
ontime8	3160.0100843608
ontime9	2949.3427742422
l1events	1558854

### 2.1.4 Events

	ccd 4	ccd 5	ccd 6	ccd 7	ccd 8	ccd 9
level 1 events	154775	428501	177680	444816	187070	166012
rejected events	23953	71195	23954	60358	26561	24067
rejected %	15%	16%	13%	13%	14%	14%

	ccd 4	ccd 5	ccd 6	ccd 7	ccd 8	ccd 9
grade 0 events	73368	38206	84214	67877	88641	77986
	47%	8%	47%	15%	47%	46%
grade 1 events	341	123	384	149	431	396
	0%	0%	0%	0%	0%	0%
grade 2 events	24648	173733	27207	119061	28757	25643
	15%	40%	15%	26%	15%	15%
grade 3 events	7808	11463	9335	27729	10069	8712
	5%	2%	5%	6%	5%	5%
grade 4 events	7754	11013	9291	27062	9759	8652
	5%	2%	5%	6%	5%	5%
grade 5 events	1364	7365	1633	7460	1795	1640
	0%	1%	0%	1%	0%	0%
grade 6 events	18168	124729	24466	144621	24104	21710
	11%	29%	13%	32%	12%	13%
grade 7 events	21324	61869	21150	50857	23514	21273
	13%	14%	11%	11%	12%	12%

## 2.2 Compared Parameters

Parameter	Planned	Actual	Parameter	Planned	Actual
Instrument	ACIS	ACIS	Obspar format version number	6	6
Detector	ACIS-456789	ACIS-456789	Obspar file type	PREDICTED	ACTUAL
Grating	NONE	NONE	Obspar update status	NONE	UPDATED
Data mode	FAINT	FAINT	On-chip summing requested	N	N
Observation mode	SECONDARY	SECONDARY	Subarray requested	NONE	NONE
Pointing RA	0	176.5064376891553	Alternating exposures requested	N	N
Pointing Dec	0	1.972119680245172	Primary exposure time	0.000000	3.2
Pointing Roll	0.0	250.1481192455918			
SIM focus pos (mm)	-0.684267	-0.7809083437167272			
SIM defocus (mm)	0	0.7524282956875696			
SIM translation stage pos (mm)	-190.132523	250.466033080201			
SIM translation stage offset (mm)	0	-0.01005468664627074			
Observation start time	143728419.81	143728418.78532			
Observation start date	2002-07-22T12:33:40	2002-07-22T12:33:38			
Observation end time	143750623.361	143750622.33623			
Observation end date	2002-07-22T18:43:43	2002-07-22T18:43:42			
Read mode	TIMED	TIMED			

## 2.3 Aspect



## **2.4 Star Slots**

## **2.5 FID Slots**



## A Summary

### A.1 Status

V&V Scientist	Jen Lauer
V&V Date (YYYY-MM-DD)	2006.09.27
V&V Edition	1
V&V Disposition and Status	OK
V&V Charge Time	7.92009286

### A.2 Comments

The ACIS focal plane temperature was above calibration limits for the first 6 ksec of the observation.