

V&V Reference Report

L2 ASCDS Version : 7.6.9

Observation 60919 - L2 Version 001
Chandra X-Ray Center

L2 Processing Date : Oct 15 2006

Contents

1	Front	2
2	OBI	3
2.1	OBI	3
2.1.1	Images	3
2.1.2	Bias	3
2.1.3	Parameters	4
2.1.4	Events	4
2.2	Compared Parameters	5
2.3	Aspect	6
2.4	Star Slots	8
2.5	FID Slots	8
A	Summary	9
A.1	Status	9
A.2	Comments	9

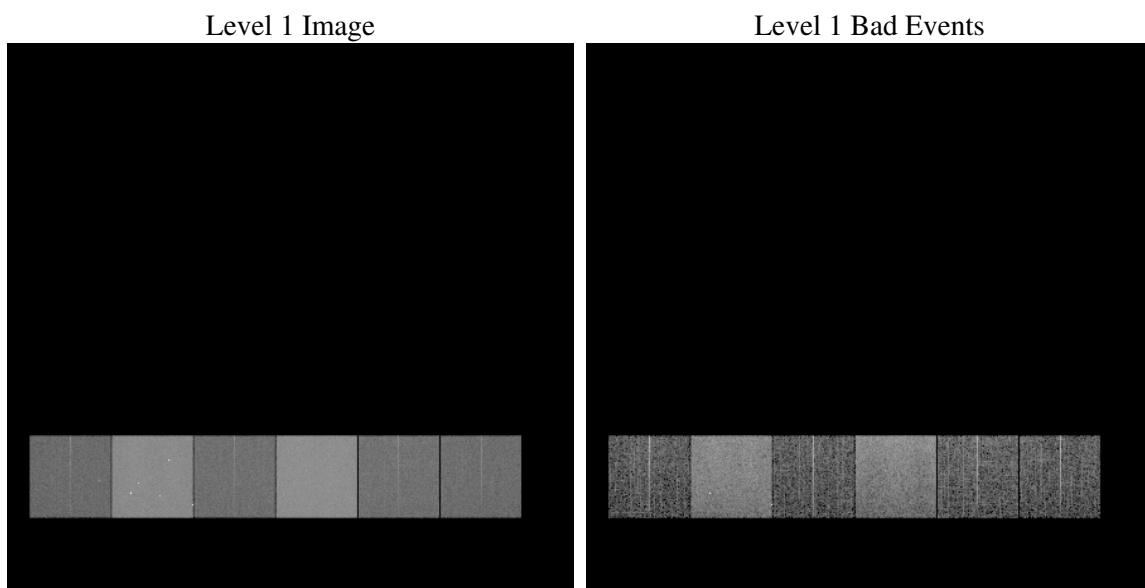
1 Front

seq_num	
obs_id	60919
title	ACIS-456789 diagnostics
observer	CHANDRA engineering request/realtime commanding
object	
dtcycle	0
cycle	P
ra_targ	0.0
dec_targ	0.0
ra_nom	121.99327749187
dec_nom	14.027853877724
roll_nom	70.249838812192
revision	2
ontime	8351.9999688864
livetime	8246.2419163097
ontime4	3279.2750325799
ontime5	8351.9999688864
ontime6	3526.1747904122
ontime7	8351.9999688864
ontime8	3600.1774377227
ontime9	3402.2702725232
l2events	1247354

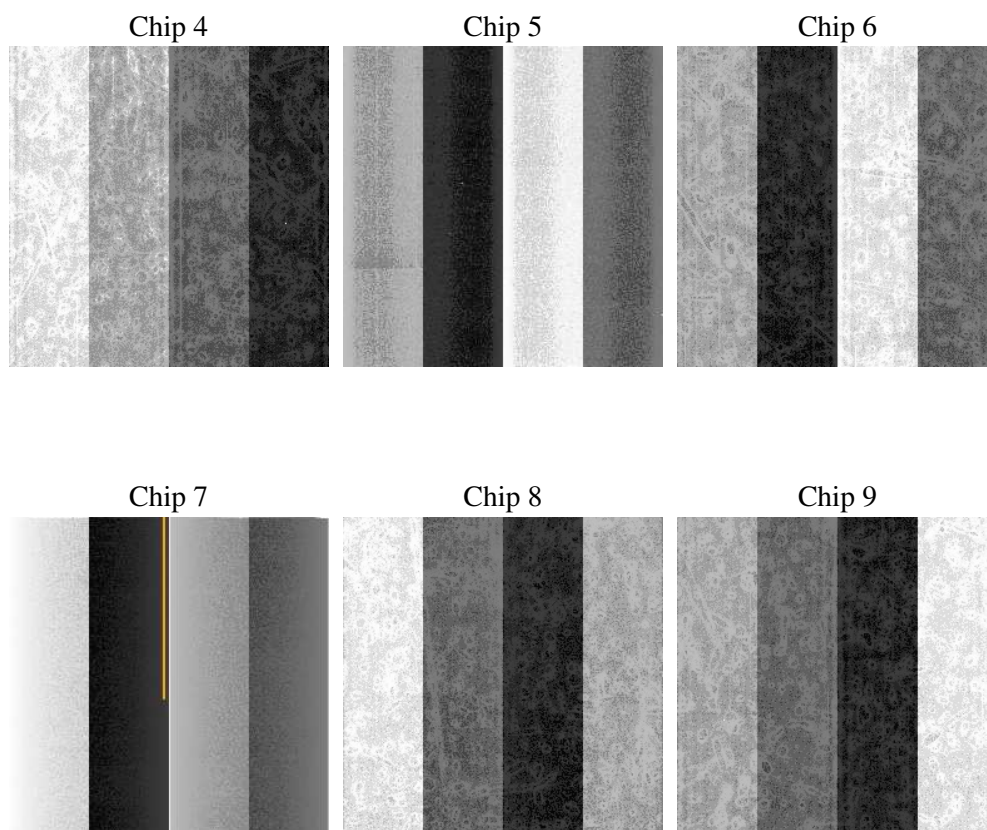
2 OBI

2.1 OBI

2.1.1 Images



2.1.2 Bias



2.1.3 Parameters

obi_num	0
ascdsver	7.6.9
caldsver	3.2.3
date	2006-10-15T09:05:17
revision	2

sched_exp_time	0.0
ontime	8465.504762888
ontime4	3318.8196625113
ontime5	8465.504762888
ontime6	3574.8598102033
ontime7	8465.504762888
ontime8	3649.4041077793
ontime9	3445.2200924158
l1events	1546786

2.1.4 Events

	ccd 4	ccd 5	ccd 6	ccd 7	ccd 8	ccd 9
level 1 events	164359	397512	186868	427579	195321	175147
rejected events	25514	68898	26273	62262	29723	26038
rejected %	15%	17%	14%	14%	15%	14%

	ccd 4	ccd 5	ccd 6	ccd 7	ccd 8	ccd 9
grade 0 events	81442	41108	88760	65953	92660	83806
	49%	10%	47%	15%	47%	47%
grade 1 events	543	257	400	164	426	462
	0%	0%	0%	0%	0%	0%
grade 2 events	22602	159355	28227	112230	29151	25592
	13%	40%	15%	26%	14%	14%
grade 3 events	9190	10855	10246	27051	10668	9586
	5%	2%	5%	6%	5%	5%
grade 4 events	9249	10470	10041	26833	10855	9506
	5%	2%	5%	6%	5%	5%
grade 5 events	1570	7239	1751	7441	1992	1766
	0%	1%	0%	1%	1%	1%
grade 6 events	17966	111175	25547	138254	24506	22500
	10%	27%	13%	32%	12%	12%
grade 7 events	21797	57053	21896	49653	25063	21929
	13%	14%	11%	11%	12%	12%

2.2 Compared Parameters

Parameter	Planned	Actual	Parameter	Planned	Actual
Instrument	ACIS	ACIS	Obspar format version number	6	6
Detector	ACIS-456789	ACIS-456789	Obspar file type	PREDICTED	ACTUAL
Grating	NONE	NONE	Obspar update status	NONE	UPDATED
Data mode	FAINT	FAINT	On-chip summing requested	N	N
Observation mode	SECONDARY	SECONDARY	Subarray requested	NONE	NONE
Pointing RA	0	121.9932774918669	Alternating exposures requested	N	N
Pointing Dec	0	14.02785387772415	Primary exposure time	3.2	3.2
Pointing Roll	0.0	70.24983881219249			
SIM focus pos (mm)	-0.684267	-0.6828225247311905			
SIM defocus (mm)	0	0.8505141146731063			
SIM translation stage pos (mm)	-190.132523	250.466033080201			
SIM translation stage offset (mm)	0	-0.01005468664627074			
Observation start time	156296205.680614	156296204.65589			
Observation start date	2002-12-14T23:36:46	2002-12-14T23:36:44			
Observation end time	156318595.781548	156318594.75682			
Observation end date	2002-12-15T05:49:56	2002-12-15T05:49:54			
Read mode	TIMED	TIMED			

2.3 Aspect

2.4 Star Slots

2.5 FID Slots

A Summary

A.1 Status

V&V Scientist	Beth Sundheim
V&V Date (YYYY-MM-DD)	2006.10.15
V&V Edition	1
V&V Disposition and Status	OK
V&V Charge Time	8.35199996

A.2 Comments