

V&V Reference Report

L2 ASCDS Version : 7.6.8

Observation 60819 - L2 Version 001
Chandra X-Ray Center

L2 Processing Date : Jul 22 2006

Contents

1	Front	2
2	OBI	3
2.1	OBI	3
2.1.1	Images	3
2.1.2	Bias	3
2.1.3	Parameters	4
2.1.4	Events	4
2.2	Compared Parameters	5
2.3	Aspect	6
2.4	Star Slots	8
2.5	FID Slots	8
A	Summary	9
A.1	Status	9
A.2	Comments	9

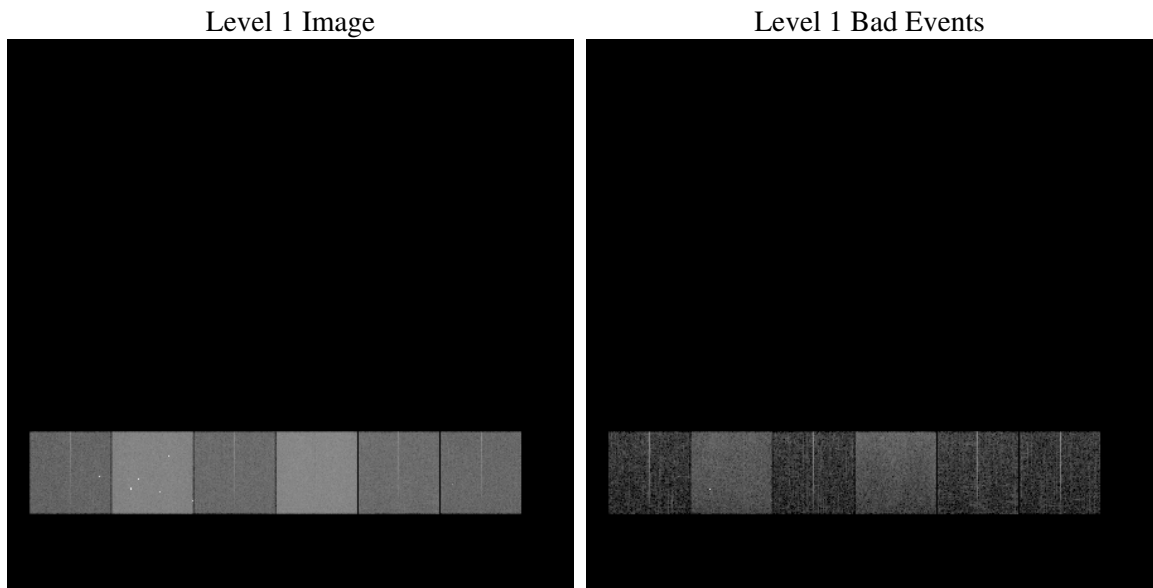
1 Front

seq_num	
obs_id	60819
title	ACIS-456789 diagnostics
observer	CHANDRA engineering request/realtime commanding
object	
dtcycle	0
cycle	P
ra_targ	0.0
dec_targ	0.0
ra_nom	165.96546388528
dec_nom	48.982600448473
roll_nom	184.58245625372
revision	2
ontime	7788.8709440231
livetime	7690.2435702349
ontime4	3151.138620764
ontime5	7788.9119840264
ontime6	3478.4401212335
ontime7	7788.8709440231
ontime8	3568.9946892858
ontime9	3368.1224970818
l2events	1140393

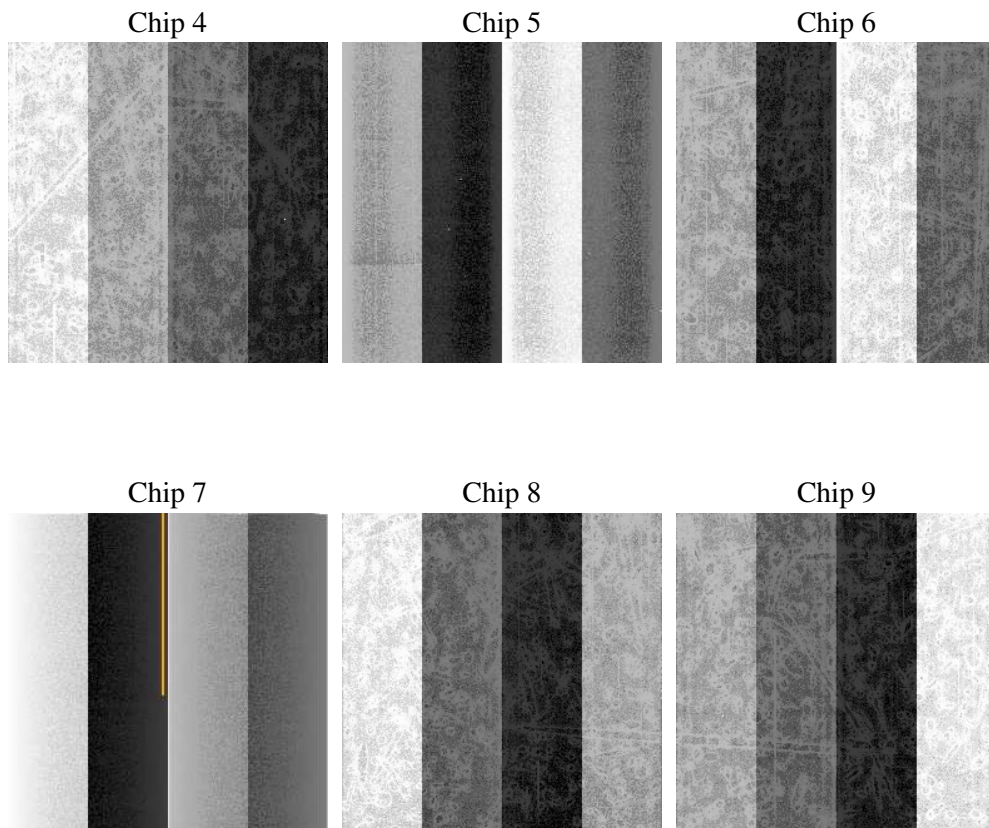
2 OBI

2.1 OBI

2.1.1 Images



2.1.2 Bias



2.1.3 Parameters

obi_num	0
ascdsver	7.6.8
caldsver	3.2.2
date	2006-07-23T00:31:03
revision	2

sched_exp_time	0.0
ontime	7791.3823676705
ontime4	3153.5269244015
ontime5	7791.3823676705
ontime6	3480.8694648743
ontime7	7791.3823676705
ontime8	3571.618106097
ontime9	3370.6749607325
l1events	1423634

2.1.4 Events

	ccd 4	ccd 5	ccd 6	ccd 7	ccd 8	ccd 9
level 1 events	152093	359240	177620	382805	186361	165515
rejected events	24773	62225	25927	56225	28697	24685
rejected %	16%	17%	14%	14%	15%	14%

	ccd 4	ccd 5	ccd 6	ccd 7	ccd 8	ccd 9
grade 0 events	74770	37355	82798	55622	86765	78187
	49%	10%	46%	14%	46%	47%
grade 1 events	570	128	366	125	471	420
	0%	0%	0%	0%	0%	0%
grade 2 events	19580	140586	26309	101381	27307	23816
	12%	39%	14%	26%	14%	14%
grade 3 events	8365	9199	9346	23199	10147	9075
	5%	2%	5%	6%	5%	5%
grade 4 events	8337	8916	9237	22593	10014	8921
	5%	2%	5%	5%	5%	5%
grade 5 events	1498	6994	1753	6861	2050	1745
	0%	1%	0%	1%	1%	1%
grade 6 events	16403	101089	24167	123915	23619	20967
	10%	28%	13%	32%	12%	12%
grade 7 events	22570	54973	23644	49109	25988	22384
	14%	15%	13%	12%	13%	13%

2.2 Compared Parameters

Parameter	Planned	Actual	Parameter	Planned	Actual
Instrument	ACIS	ACIS	Obspar format version number	6	6
Detector	ACIS-456789	ACIS-456789	Obspar file type	PREDICTED	ACTUAL
Grating	NONE	NONE	Obspar update status	NONE	UPDATED
Data mode	FAINT	FAINT	On-chip summing requested	N	N
Observation mode	SECONDARY	SECONDARY	Subarray requested	NONE	NONE
Pointing RA	0	165.9654638852758	Alternating exposures requested	N	N
Pointing Dec	0	48.98260044847281	Primary exposure time	0.000000	3.2
Pointing Roll	0.0	184.5824562537179			
SIM focus pos (mm)	-0.684267	-0.7809083437167272			
SIM defocus (mm)	0	0.7524282956875696			
SIM translation stage pos (mm)	-190.132523	250.466033080201			
SIM translation stage offset (mm)	0	-0.01005468664627074			
Observation start time	163573982.735599	163573981.7109			
Observation start date	2003-03-09T05:13:03	2003-03-09T05:13:01			
Observation end time	163585161.386069	163585160.36137			
Observation end date	2003-03-09T08:19:21	2003-03-09T08:19:20			
Read mode	TIMED	TIMED			

2.3 Aspect

2.4 Star Slots

2.5 FID Slots

A Summary

A.1 Status

V&V Scientist	Beth Sundheim
V&V Date (YYYY-MM-DD)	2006.07.23
V&V Edition	1
V&V Disposition and Status	OK
V&V Charge Time	7.78887094

A.2 Comments

Focal plane temperature is warmer than -118 degrees throughout observation. The ACIS calibrations are not verified or necessarily applicable for focal plane temperatures warmer than -118 degrees.