

V&V Reference Report

L2 ASCDS Version : 7.6.8

Observation 60629 - L2 Version 001
Chandra X-Ray Center

L2 Processing Date : Jul 14 2006

Contents

1	Front	2
2	OBI	3
2.1	OBI	3
2.1.1	Images	3
2.1.2	Bias	3
2.1.3	Parameters	4
2.1.4	Events	4
2.2	Compared Parameters	5
2.3	Aspect	6
2.4	Star Slots	8
2.5	FID Slots	8
A	Summary	9
A.1	Status	9
A.2	Comments	9

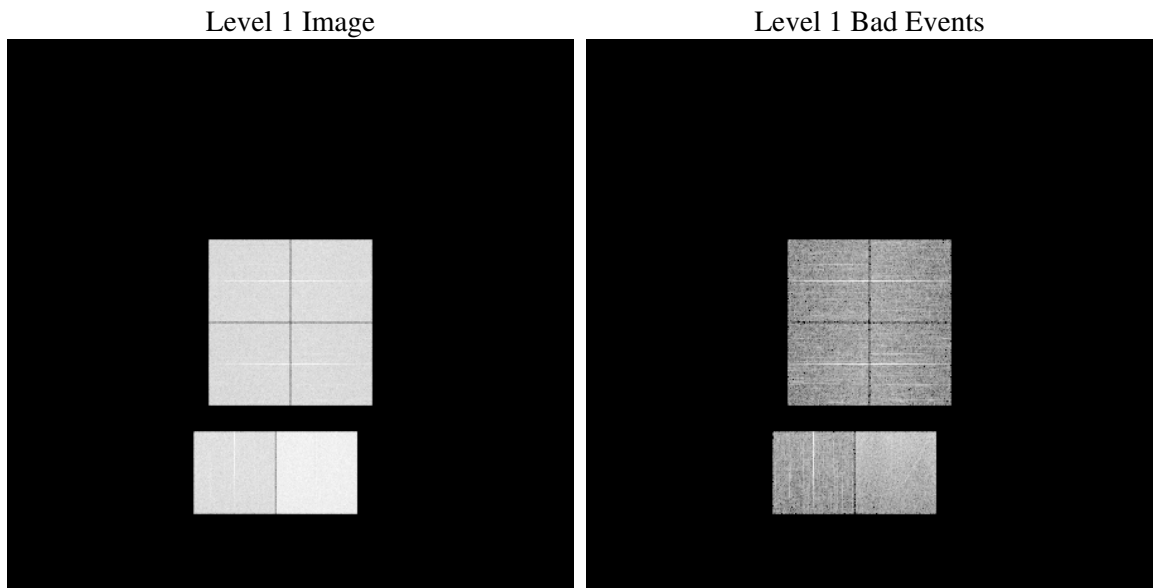
1 Front

seq_num	
obs_id	60629
title	ACIS-012367 diagnostics
observer	CHANDRA engineering request/realtime commanding
object	
dtcycle	0
cycle	P
ra_targ	0.0
dec_targ	0.0
ra_nom	338.27656935133
dec_nom	-9.7831088646093
roll_nom	110.89737903881
revision	2
ontime	11337.599957764
livetime	11194.036440416
ontime0	6793.756365329
ontime1	7010.9010725915
ontime2	6531.2366473079
ontime3	6642.66988644
ontime6	7159.9868301451
ontime7	11337.599957764
l2events	1677613

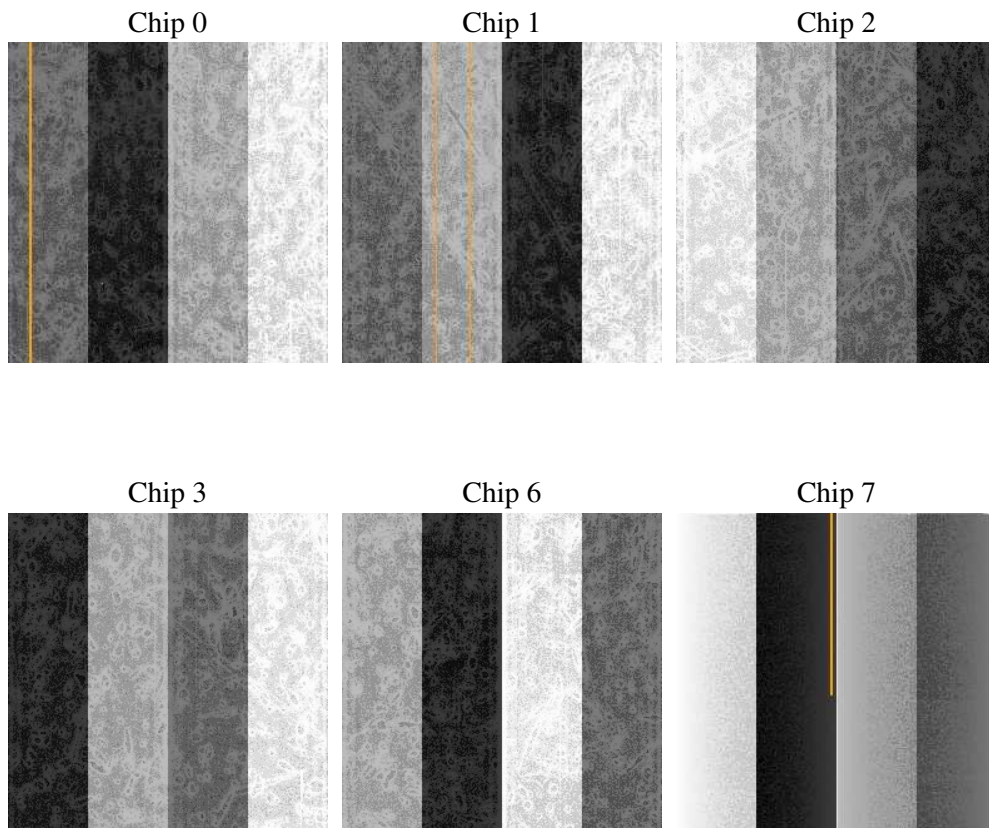
2 OBI

2.1 OBI

2.1.1 Images



2.1.2 Bias



2.1.3 Parameters

obi_num	0
ascdsver	7.6.8
caldbver	3.2.2
date	2006-07-14T19:59:13
revision	2

sched_exp_time	0.0
ontime	11340.269503385
ontime0	6796.4259109497
ontime1	7013.5706182122
ontime2	6533.9061929286
ontime3	6644.0987229645
ontime6	7162.6563757658
ontime7	11340.269503385
l1events	2054531

2.1.4 Events

	ccd 0	ccd 1	ccd 2	ccd 3	ccd 6	ccd 7
level 1 events	301135	310715	294084	300784	333495	514318
rejected events	42782	44364	42680	44388	48666	75019
rejected %	14%	14%	14%	14%	14%	14%

	ccd 0	ccd 1	ccd 2	ccd 3	ccd 6	ccd 7
grade 0 events	142674	146476	140624	143975	154999	80462
	47%	47%	47%	47%	46%	15%
grade 1 events	748	694	780	834	703	211
	0%	0%	0%	0%	0%	0%
grade 2 events	45365	47184	42913	43725	49303	131706
	15%	15%	14%	14%	14%	25%
grade 3 events	16622	17003	16370	16696	17728	32504
	5%	5%	5%	5%	5%	6%
grade 4 events	16365	17102	16580	16589	17694	32090
	5%	5%	5%	5%	5%	6%
grade 5 events	2980	3106	2753	3112	3340	9551
	0%	0%	0%	1%	1%	1%
grade 6 events	37327	38586	34917	35411	45105	162537
	12%	12%	11%	11%	13%	31%
grade 7 events	39054	40564	39147	40442	44623	65257
	12%	13%	13%	13%	13%	12%

2.2 Compared Parameters

Parameter	Planned	Actual	Parameter	Planned	Actual
Instrument	ACIS	ACIS	Obspar format version number	6	6
Detector	ACIS-012367	ACIS-012367	Obspar file type	PREDICTED	ACTUAL
Grating	NONE	NONE	Obspar update status	NONE	UPDATED
Data mode	FAINT	FAINT	On-chip summing requested	N	N
Observation mode	SECONDARY	SECONDARY	Subarray requested	NONE	NONE
Pointing RA	0	338.2765693513326	Alternating exposures requested	N	N
Pointing Dec	0	-9.783108864609261	Primary exposure time	0.000000	3.2
Pointing Roll	0.0	110.8973790388099			
SIM focus pos (mm)	-0.782348	-0.7809083437167272			
SIM defocus (mm)	0	0.7524282956875696			
SIM translation stage pos (mm)	-233.592463	250.466033080201			
SIM translation stage offset (mm)	0	-0.01005468664627074			
Observation start time	175216911.078769	175216910.05405			
Observation start date	2003-07-21T23:21:51	2003-07-21T23:21:50			
Observation end time	175257732.730511	175257731.70579			
Observation end date	2003-07-22T10:42:13	2003-07-22T10:42:11			
Read mode	TIMED	TIMED			

2.3 Aspect

2.4 Star Slots

2.5 FID Slots

A Summary

A.1 Status

V&V Scientist	Jen Lauer
V&V Date (YYYY-MM-DD)	2006.07.17
V&V Edition	1
V&V Disposition and Status	OK
V&V Charge Time	11.3375999

A.2 Comments