

V&V Reference Report

L2 ASCDS Version : 7.6.8

Observation 60549 - L2 Version 001
Chandra X-Ray Center

L2 Processing Date : Jul 4 2006

Contents

1	Front	2
2	OBI	3
2.1	OBI	3
2.1.1	Images	3
2.1.2	Bias	3
2.1.3	Parameters	4
2.1.4	Events	4
2.2	Compared Parameters	5
2.3	Aspect	6
2.4	Star Slots	8
2.5	FID Slots	8
A	Summary	9
A.1	Status	9
A.2	Comments	9

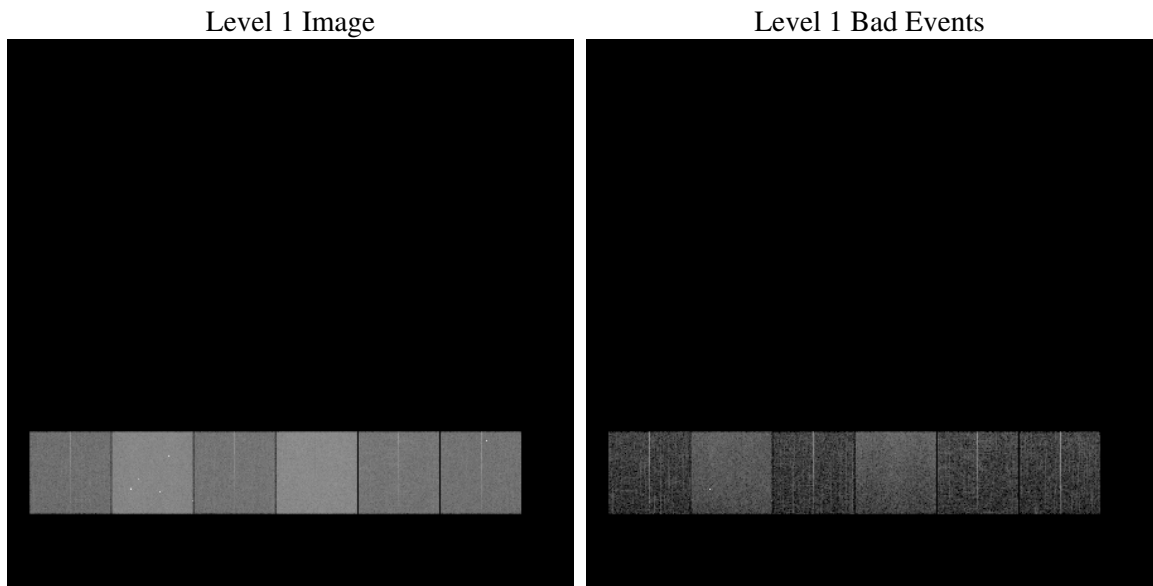
1 Front

seq_num	
obs_id	60549
title	ACIS-456789 diagnostics
observer	CHANDRA engineering request/realtime commanding
object	
dtcycle	0
cycle	P
ra_targ	0.0
dec_targ	0.0
ra_nom	124.97598725284
dec_nom	-22.981860103841
roll_nom	107.79922791606
revision	2
ontime	7797.8581332266
livetime	7699.1169582373
ontime4	3834.2687650025
ontime5	7797.8991732299
ontime6	4210.1828653514
ontime7	7797.8581332266
ontime8	4242.6740308106
ontime9	4070.6967390776
l2events	1121959

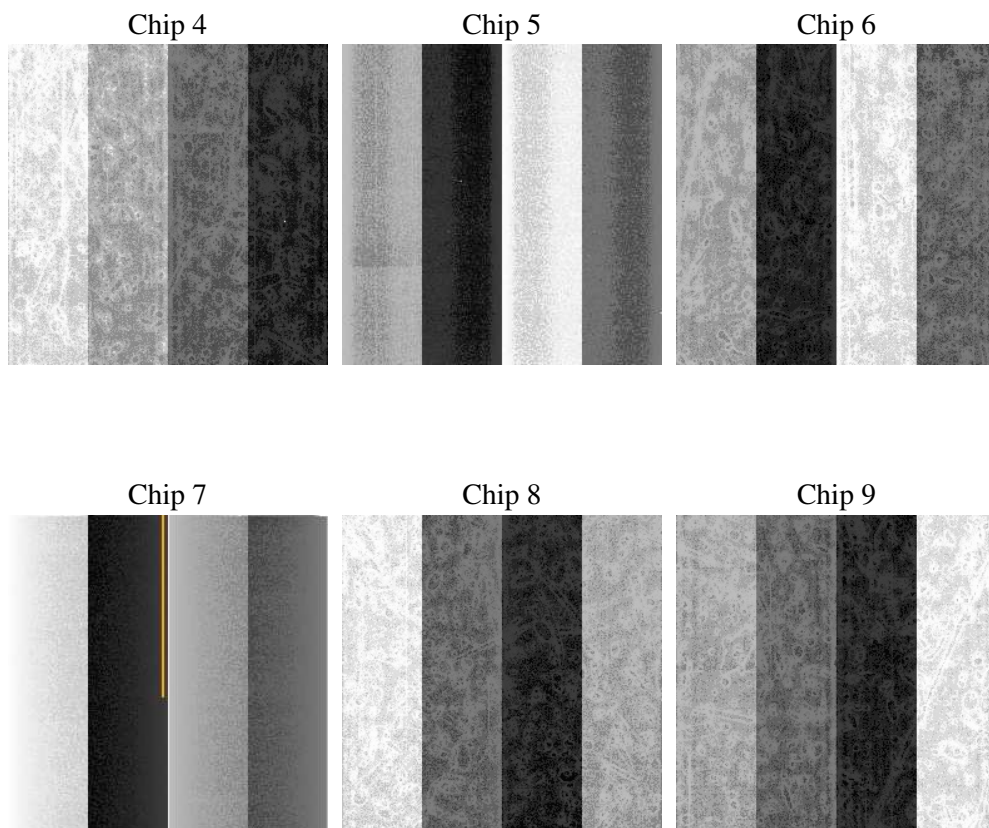
2 OBI

2.1 OBI

2.1.1 Images



2.1.2 Bias



2.1.3 Parameters

obi_num	0
ascdsver	7.6.8
caldbver	3.2.2
date	2006-07-04T13:02:46
revision	2

sched_exp_time	0.0
ontime	7801.0924744904
ontime4	3837.3799862564
ontime5	7801.0924744904
ontime6	4213.3351266086
ontime7	7801.0924744904
ontime8	4245.744212091
ontime9	4073.9721203446
l1events	1419493

2.1.4 Events

	ccd 4	ccd 5	ccd 6	ccd 7	ccd 8	ccd 9
level 1 events	168200	324171	193502	349514	199958	184148
rejected events	29304	59864	29992	55287	32852	30435
rejected %	17%	18%	15%	15%	16%	16%

	ccd 4	ccd 5	ccd 6	ccd 7	ccd 8	ccd 9
grade 0 events	80176	32129	88656	50598	91257	85273
	47%	9%	45%	14%	45%	46%
grade 1 events	596	138	437	125	488	497
	0%	0%	0%	0%	0%	0%
grade 2 events	22327	125010	28428	90303	28975	25969
	13%	38%	14%	25%	14%	14%
grade 3 events	9169	8404	10186	20690	10884	9711
	5%	2%	5%	5%	5%	5%
grade 4 events	9211	8425	9943	20767	10912	9696
	5%	2%	5%	5%	5%	5%
grade 5 events	1794	6940	2033	6825	2289	2070
	1%	2%	1%	1%	1%	1%
grade 6 events	18105	90436	26394	111986	25198	23188
	10%	27%	13%	32%	12%	12%
grade 7 events	26822	52689	27425	48220	29955	27744
	15%	16%	14%	13%	14%	15%

2.2 Compared Parameters

Parameter	Planned	Actual	Parameter	Planned	Actual
Instrument	ACIS	ACIS	Obspar format version number	6	6
Detector	ACIS-456789	ACIS-456789	Obspar file type	PREDICTED	ACTUAL
Grating	NONE	NONE	Obspar update status	NONE	UPDATED
Data mode	FAINT	FAINT	On-chip summing requested	N	N
Observation mode	SECONDARY	SECONDARY	Subarray requested	NONE	NONE
Pointing RA	0	124.9759872528392	Alternating exposures requested	N	N
Pointing Dec	0	-22.98186010384111	Primary exposure time	0.000000	3.2
Pointing Roll	0.0	107.7992279160611			
SIM focus pos (mm)	-0.684267	-0.7809083437167272			
SIM defocus (mm)	0	0.7524282956875696			
SIM translation stage pos (mm)	-190.132523	250.466033080201			
SIM translation stage offset (mm)	0	-0.01005468664627074			
Observation start time	180474946.053651	180474945.02893			
Observation start date	2003-09-20T19:55:46	2003-09-20T19:55:45			
Observation end time	180494334.954483	180494333.92976			
Observation end date	2003-09-21T01:18:55	2003-09-21T01:18:53			
Read mode	TIMED	TIMED			

2.3 Aspect

2.4 Star Slots

2.5 FID Slots

A Summary

A.1 Status

V&V Scientist	Beth Sundheim
V&V Date (YYYY-MM-DD)	2006.07.05
V&V Edition	1
V&V Disposition and Status	OK
V&V Charge Time	7.79785813

A.2 Comments