

# V&V Reference Report

## L2 ASCDS Version : 7.6.8

Observation 60539 - L2 Version 001  
Chandra X-Ray Center

L2 Processing Date : Jul 3 2006

## Contents

<b>1</b>	<b>Front</b>	<b>2</b>
<b>2</b>	<b>OBI</b>	<b>3</b>
2.1	OBI . . . . .	3
2.1.1	Images . . . . .	3
2.1.2	Bias . . . . .	3
2.1.3	Parameters . . . . .	4
2.1.4	Events . . . . .	4
2.2	Compared Parameters . . . . .	5
2.3	Aspect . . . . .	6
2.4	Star Slots . . . . .	8
2.5	FID Slots . . . . .	8
<b>A</b>	<b>Summary</b>	<b>9</b>
A.1	Status . . . . .	9
A.2	Comments . . . . .	9

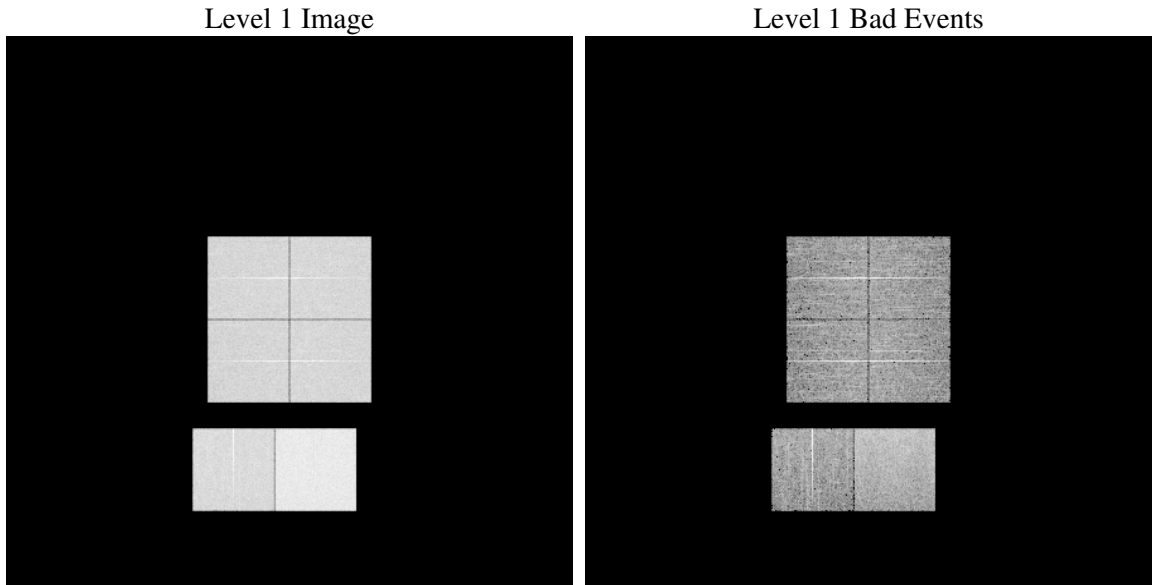
# 1 Front

seq_num	&#160
obs_id	60539
title	ACIS-012367 diagnostics
observer	CHANDRA engineering request/realtime commanding
object	&#160
dtcycle	0
cycle	P
ra_targ	0.0
dec_targ	0.0
ra_nom	328.05032810663
dec_nom	-55.804269437905
roll_nom	318.5144945284
revision	2
ontime	8364.7999688387
livetime	8258.8798349554
ontime0	5340.2043904066
ontime1	5366.1737722456
ontime2	5016.8748112321
ontime3	5233.1705714762
ontime6	5690.3530870378
ontime7	8364.7999688387
l2events	1222567

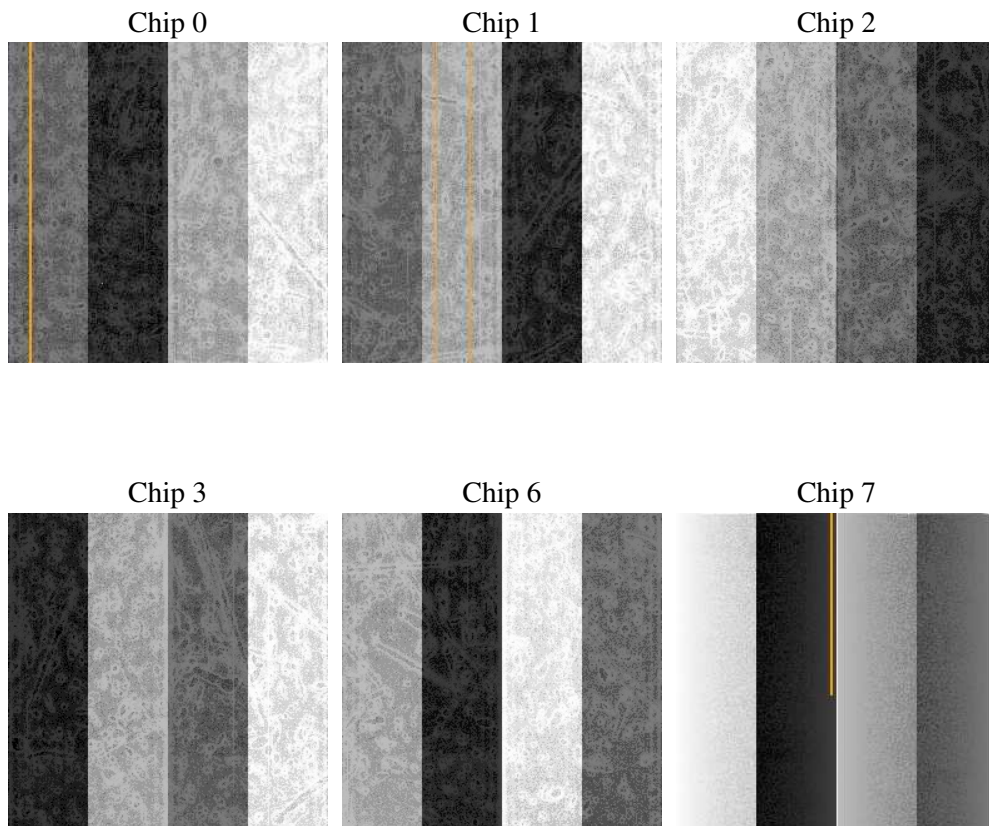
## 2 OBI

### 2.1 OBI

#### 2.1.1 Images



#### 2.1.2 Bias



### 2.1.3 Parameters

obi_num	0
ascdsver	7.6.8
caldbver	3.2.2
date	2006-07-03T05:10:47
revision	2

sched_exp_time	0.0
ontime	8465.4999432564
ontime0	5402.7817422152
ontime1	5431.9510244131
ontime2	5081.924102664
ontime3	5299.0709336996
ontime6	5756.0482991338
ontime7	8465.4999432564
l1events	1538311

### 2.1.4 Events

	ccd 0	ccd 1	ccd 2	ccd 3	ccd 6	ccd 7
level 1 events	228533	231728	221311	230141	255769	370829
rejected events	37551	38168	38401	39069	41915	62742
rejected %	16%	16%	17%	16%	16%	16%

	ccd 0	ccd 1	ccd 2	ccd 3	ccd 6	ccd 7
grade 0 events	106911	107343	103830	108486	117591	54565
	46%	46%	46%	47%	45%	14%
grade 1 events	604	552	661	652	621	149
	0%	0%	0%	0%	0%	0%
grade 2 events	33524	34751	30924	32964	37228	94880
	14%	14%	13%	14%	14%	25%
grade 3 events	12195	12526	12157	12490	13412	22583
	5%	5%	5%	5%	5%	6%
grade 4 events	12497	12440	12170	12594	13328	22160
	5%	5%	5%	5%	5%	5%
grade 5 events	2302	2362	2225	2536	2829	7454
	1%	1%	1%	1%	1%	2%
grade 6 events	28056	28801	26100	26872	34732	117489
	12%	12%	11%	11%	13%	31%
grade 7 events	32444	32953	33244	33547	36028	51549
	14%	14%	15%	14%	14%	13%

## 2.2 Compared Parameters

Parameter	Planned	Actual	Parameter	Planned	Actual
Instrument	ACIS	ACIS	Obspar format version number	6	6
Detector	ACIS-012367	ACIS-012367	Obspar file type	PREDICTED	ACTUAL
Grating	NONE	NONE	Obspar update status	NONE	UPDATED
Data mode	FAINT	FAINT	On-chip summing requested	N	N
Observation mode	SECONDARY	SECONDARY	Subarray requested	NONE	NONE
Pointing RA	0	328.0503281066262	Alternating exposures requested	N	N
Pointing Dec	0	-55.80426943790459	Primary exposure time	0.000000	3.2
Pointing Roll	0.0	318.5144945283964			
SIM focus pos (mm)	-0.782348	-0.6828225247311905			
SIM defocus (mm)	0	0.8505141146731063			
SIM translation stage pos (mm)	-233.592463	250.466033080201			
SIM translation stage offset (mm)	0	-0.01005468664627074			
Observation start time	181198290.634672	181198289.60996			
Observation start date	2003-09-29T04:51:31	2003-09-29T04:51:29			
Observation end time	181222484.73571	181222483.711			
Observation end date	2003-09-29T11:34:45	2003-09-29T11:34:43			
Read mode	TIMED	TIMED			

## 2.3 Aspect



## **2.4 Star Slots**

## **2.5 FID Slots**



## A Summary

### A.1 Status

V&V Scientist	Beth Sundheim
V&V Date (YYYY-MM-DD)	2006.07.03
V&V Edition	1
V&V Disposition and Status	OK
V&V Charge Time	8.36479996

### A.2 Comments