

V&V Reference Report

L2 ASCDS Version : 8.4.5

Observation 60489 - L2 Version 3
Chandra X-Ray Center

L2 Processing Date : Nov 7 2012

Contents

1	Front	2
2	OBI	3
2.1	OBI	3
2.1.1	Images	3
2.1.2	Bias	3
2.1.3	Parameters	4
2.1.4	Events	4
2.2	Compared Parameters	5
2.3	Star Slots	6
2.4	FID Slots	6
A	Summary	7
A.1	Status	7
A.2	Comments	7

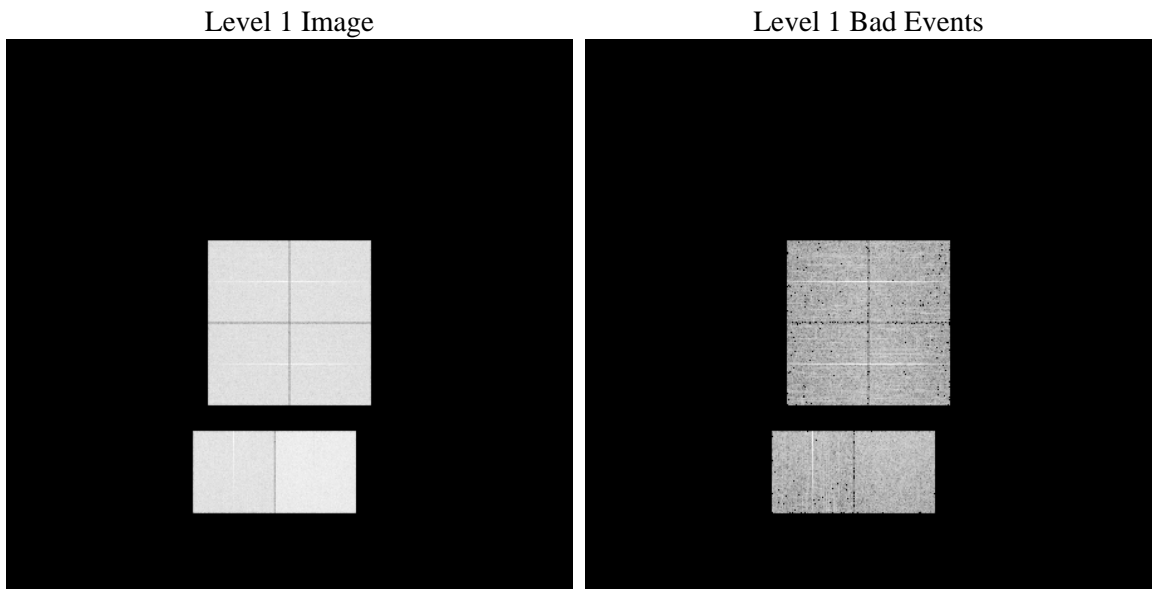
1 Front

seq_num	 	Sequence number
obs_id	60489	Observation id
title	ACIS-012367 diagnostics	Proposal title
observer	CHANDRA engineering request/realtime commanding	Principal investig
object	 	Source name
dtcycle	0	
cycle	P	events from which exps? Prim/Second/Both
ra_targ	0.0	Observer's specified target RA [deg]
dec_targ	0.0	Observer's specified target Dec [deg]
ra_nom	344.01794312123	Nominal RA [deg]
dec_nom	34.975440079672	Nominal Dec [deg]
roll_nom	268.07816419374	Nominal Roll [deg]
revision	3	Processing version of data
ontime	7807.5715782642	Sum of GTIs [s]
livetime	7708.7074057851	Livetime [s]
ontime0	5276.3759869635	Sum of GTIs [s]
ontime1	5376.8460457623	Sum of GTIs [s]
ontime2	5137.0145156384	Sum of GTIs [s]
ontime3	5162.9411899447	Sum of GTIs [s]
ontime6	5554.233668983	Sum of GTIs [s]
ontime7	7807.5715782642	Sum of GTIs [s]
l2events	1171755	Number of level 2 events

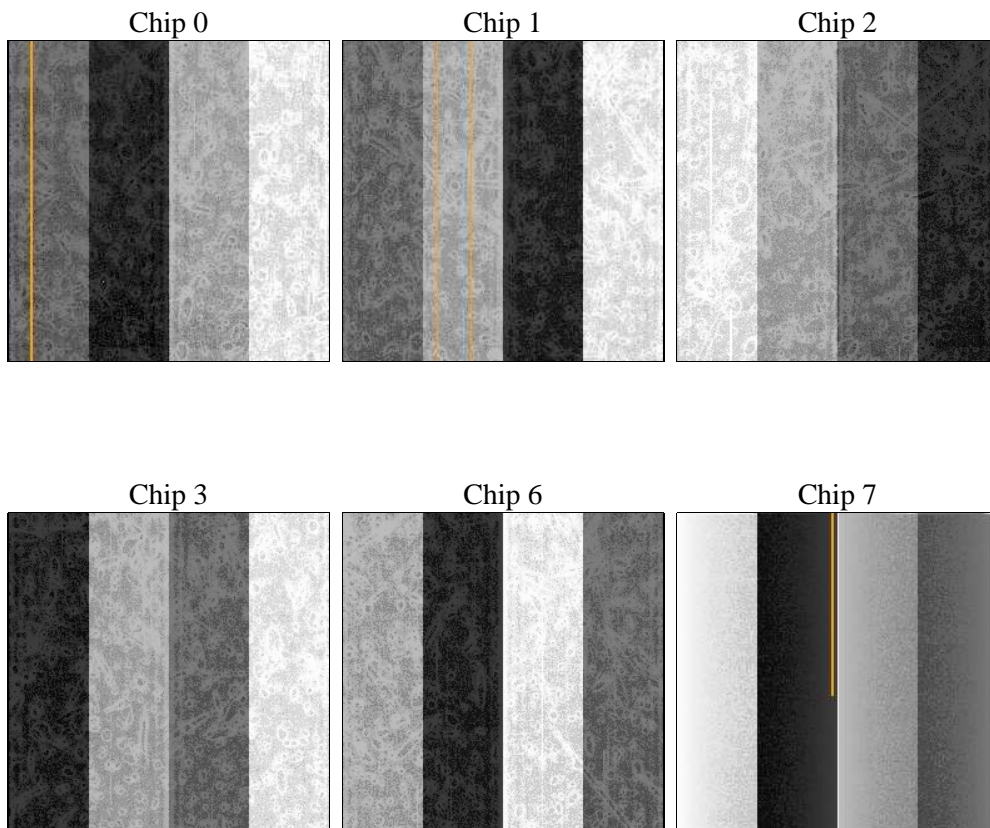
2 OBI

2.1 OBI

2.1.1 Images



2.1.2 Bias



2.1.3 Parameters

obi_num	1	Obi number	sched_exp_time	0.0	[s] Scheduled observation exposure time
ascdsver	8.4.5	Processing system revision	ontime	7807.5715782642	Sum of GTIs [s]
caldsver	4.5.2	 	ontime0	5276.3759869635	Sum of GTIs [s]
date	2012-11-07T23:34:15	Date and time of file creation	ontime1	5376.8460457623	Sum of GTIs [s]
revision	3	Processing version of data	ontime2	5137.0145156384	Sum of GTIs [s]
			ontime3	5162.9411899447	Sum of GTIs [s]
			ontime6	5554.233668983	Sum of GTIs [s]
			ontime7	7807.5715782642	Sum of GTIs [s]
			l1events	1420533	Number of level 1 events

2.1.4 Events

	ccd 0	ccd 1	ccd 2	ccd 3	ccd 6	ccd 7		ccd 0	ccd 1	ccd 2	ccd 3	ccd 6	ccd 7
level 1 events	214015	217501	211096	214330	236615	326976	grade 0 events	101763	102978	101087	102320	111507	72471
rejected events	30126	29968	30272	32391	32938	37321		47%	47%	47%	47%	47%	22%
rejected %	14%	13%	14%	15%	13%	11%	grade 1 events	549	461	516	540	517	193
								0%	0%	0%	0%	0%	0%
							grade 2 events	32070	33309	30824	30951	34893	64508
								14%	15%	14%	14%	14%	19%
							grade 3 events	11875	11863	11673	11960	12596	29662
								5%	5%	5%	5%	5%	9%
							grade 4 events	11778	11949	11929	11893	12557	28851
								5%	5%	5%	5%	5%	8%
							grade 5 events	2151	2155	1992	2291	2349	7028
								1%	0%	0%	1%	0%	2%
							grade 6 events	26403	27434	25311	24815	32124	94163
								12%	12%	11%	11%	13%	28%
							grade 7 events	27426	27352	27764	29560	30072	30100
								12%	12%	13%	13%	12%	9%

2.2 Compared Parameters

Parameter	Planned	Actual	Parameter	Planned	Actual
Instrument	ACIS	ACIS	Obspar format version number	7	7
Detector	ACIS-012367	ACIS-012367	Obspar file type	PREDICTED	ACTUAL
Grating	NONE	NONE	Obspar update status	NONE	UPDATED
Data mode	FAINT	FAINT	On-chip summing requested	N	N
Observation mode	SECONDARY	SECONDARY	Subarray requested	NONE	NONE
[deg] Pointing RA	0	344.0179431212346	Alternating exposures requested	N	N
[deg] Pointing Dec	0	34.9754400796715	[s] Primary exposure time	0.000000	3.2
[deg] Pointing Roll	0.0	268.0781641937438			
[mm] SIM focus pos	-0.782348	-1.428180813131781			
[mm] SIM defocus	0	0.1051558262725154			
[mm] SIM translation stage pos	-233.592463	250.466033080201			
[mm] SIM translation stage offset	0	-0.01005468664627074			
[s] Observation start time (MET)	184820273.8407	184820272.81595			
Observation start date	2003-11-10T02:57:54	2003-11-10T02:57:52			
[s] Observation end time (MET)	184835597.591367	184835596.56661			
Observation end date	2003-11-10T07:13:18	2003-11-10T07:13:16			
Read mode	TIMED	TIMED			

2.3 Star Slots

2.4 FID Slots

A Summary

A.1 Status

V&V Scientist	Beth Sundheim
V&V Date (YYYY-MM-DD)	2012.12.07
V&V Edition	1
V&V Disposition and Status	OK
V&V Charge Time	7.8075715782642

A.2 Comments