

V&V Reference Report

L2 ASCDS Version : 7.6.8

Observation 60489 - L2 Version 001
Chandra X-Ray Center

L2 Processing Date : Jun 30 2006

Contents

1	Front	2
2	OBI	3
2.1	OBI	3
2.1.1	Images	3
2.1.2	Bias	3
2.1.3	Parameters	4
2.1.4	Events	4
2.2	Compared Parameters	5
2.3	Aspect	6
2.4	Star Slots	8
2.5	FID Slots	8
A	Summary	9
A.1	Status	9
A.2	Comments	9

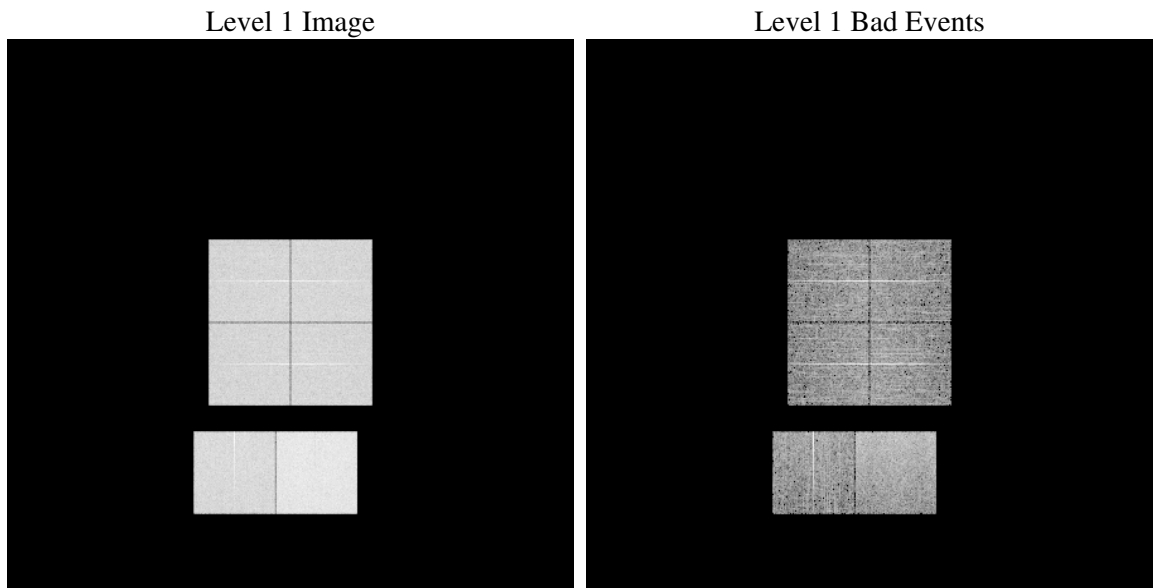
1 Front

seq_num	
obs_id	60489
title	ACIS-012367 diagnostics
observer	CHANDRA engineering request/realtime commanding
object	
dtcycle	0
cycle	P
ra_targ	0.0
dec_targ	0.0
ra_nom	344.01794429152
dec_nom	34.975467841922
roll_nom	268.07816351349
revision	2
ontime	7807.0608008504
livetime	7708.2030961424
ontime0	5275.906249553
ontime1	5376.4173483551
ontime2	5136.6268582344
ontime3	5162.3893725276
ontime6	5554.7530316412
ontime7	7807.0608008504
l2events	1162047

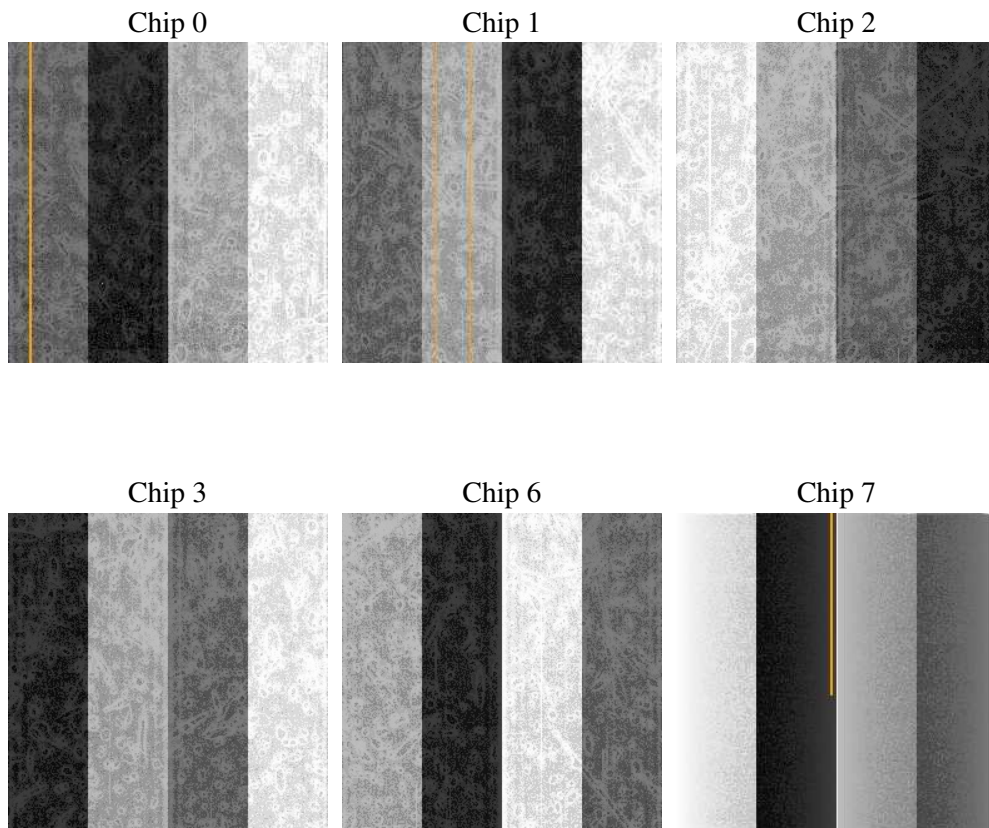
2 OBI

2.1 OBI

2.1.1 Images



2.1.2 Bias



2.1.3 Parameters

obi_num	1
ascdsver	7.6.8
caldbver	3.2.2
date	2006-06-30T15:20:36
revision	2

sched_exp_time	0.0
ontime	7807.5715782642
ontime0	5276.3759869635
ontime1	5376.8460457623
ontime2	5137.0145156384
ontime3	5162.9411899447
ontime6	5555.0996490717
ontime7	7807.5715782642
l1events	1420533

2.1.4 Events

	ccd 0	ccd 1	ccd 2	ccd 3	ccd 6	ccd 7
level 1 events	214015	217501	211096	214330	236615	326976
rejected events	30126	29968	30272	32391	32938	47175
rejected %	14%	13%	14%	15%	13%	14%

	ccd 0	ccd 1	ccd 2	ccd 3	ccd 6	ccd 7
grade 0 events	101763	102980	101087	102320	111508	51316
	47%	47%	47%	47%	47%	15%
grade 1 events	549	461	517	540	518	116
	0%	0%	0%	0%	0%	0%
grade 2 events	32070	33307	30824	30951	34892	84148
	14%	15%	14%	14%	14%	25%
grade 3 events	11876	11863	11673	11960	12597	21191
	5%	5%	5%	5%	5%	6%
grade 4 events	11778	11949	11929	11894	12558	20661
	5%	5%	5%	5%	5%	6%
grade 5 events	2151	2155	1991	2291	2349	6097
	1%	0%	0%	1%	0%	1%
grade 6 events	26402	27434	25311	24814	32122	102485
	12%	12%	11%	11%	13%	31%
grade 7 events	27426	27352	27764	29560	30071	40962
	12%	12%	13%	13%	12%	12%

2.2 Compared Parameters

Parameter	Planned	Actual	Parameter	Planned	Actual
Instrument	ACIS	ACIS	Obspar format version number	6	6
Detector	ACIS-012367	ACIS-012367	Obspar file type	PREDICTED	ACTUAL
Grating	NONE	NONE	Obspar update status	NONE	UPDATED
Data mode	FAINT	FAINT	On-chip summing requested	N	N
Observation mode	SECONDARY	SECONDARY	Subarray requested	NONE	NONE
Pointing RA	0	344.0179442915249	Alternating exposures requested	N	N
Pointing Dec	0	34.9754678419219	Primary exposure time	0.000000	3.2
Pointing Roll	0.0	268.078163513486			
SIM focus pos (mm)	-0.782348	-1.428180813131781			
SIM defocus (mm)	0	0.1051558262725154			
SIM translation stage pos (mm)	-233.592463	250.466033080201			
SIM translation stage offset (mm)	0	-0.01005468664627074			
Observation start time	184820273.8407	184820272.81595			
Observation start date	2003-11-10T02:57:54	2003-11-10T02:57:52			
Observation end time	184835597.591367	184835596.56661			
Observation end date	2003-11-10T07:13:18	2003-11-10T07:13:16			
Read mode	TIMED	TIMED			

2.3 Aspect

2.4 Star Slots

2.5 FID Slots

A Summary

A.1 Status

V&V Scientist	Beth Sundheim
V&V Date (YYYY-MM-DD)	2006.06.30
V&V Edition	1
V&V Disposition and Status	OK
V&V Charge Time	7.8070608

A.2 Comments