

V&V Reference Report

L2 ASCDS Version : 8.4.5

Observation 60469 - L2 Version 3
Chandra X-Ray Center

L2 Processing Date : Nov 8 2012

Contents

1	Front	2
2	OBI	3
2.1	OBI	3
2.1.1	Images	3
2.1.2	Bias	3
2.1.3	Parameters	4
2.1.4	Events	4
2.2	Compared Parameters	5
2.3	Star Slots	6
2.4	FID Slots	6
A	Summary	7
A.1	Status	7
A.2	Comments	7

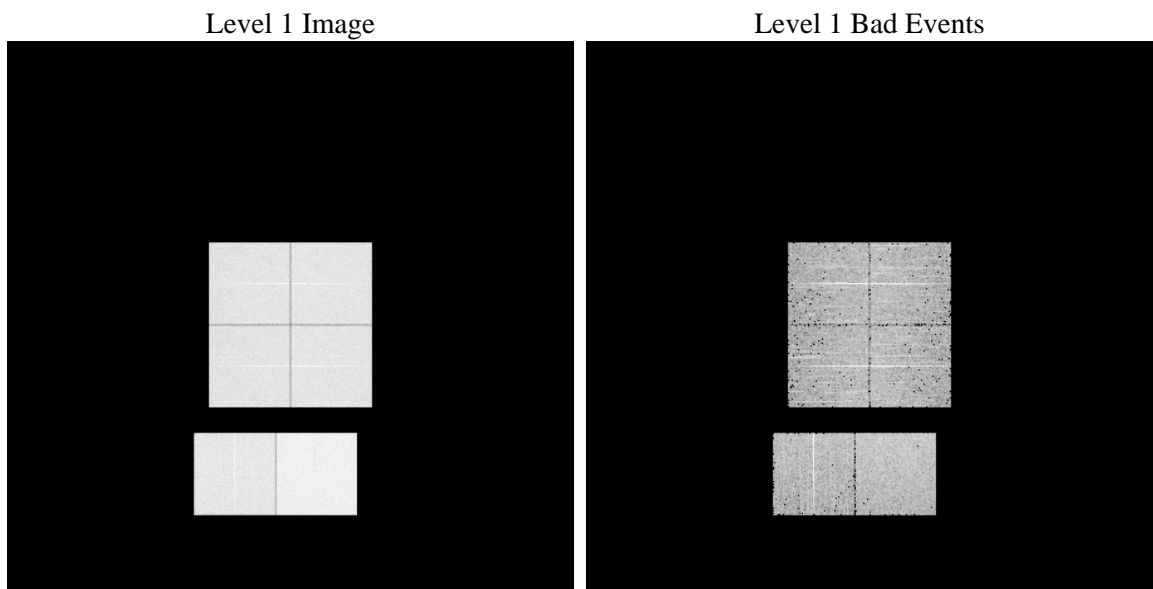
1 Front

seq_num	 	Sequence number
obs_id	60469	Observation id
title	ACIS-012367 diagnostics	Proposal title
observer	CHANDRA engineering request/realtime commanding	Principal investig
object	 	Source name
dtcycle	0	
cycle	P	events from which exps? Prim/Second/Both
ra_targ	0.0	Observer's specified target RA [deg]
dec_targ	0.0	Observer's specified target Dec [deg]
ra_nom	59.978343240704	Nominal RA [deg]
dec_nom	32.977877112999	Nominal Dec [deg]
roll_nom	197.71787063714	Nominal Roll [deg]
revision	3	Processing version of data
ontime	7811.199970901	Sum of GTIs [s]
livetime	7712.2898535295	Livetime [s]
ontime0	5147.1064885855	Sum of GTIs [s]
ontime1	5315.2738430202	Sum of GTIs [s]
ontime2	5013.8621012866	Sum of GTIs [s]
ontime3	5137.3905929625	Sum of GTIs [s]
ontime6	5467.8410709798	Sum of GTIs [s]
ontime7	7811.199970901	Sum of GTIs [s]
l2events	1183397	Number of level 2 events

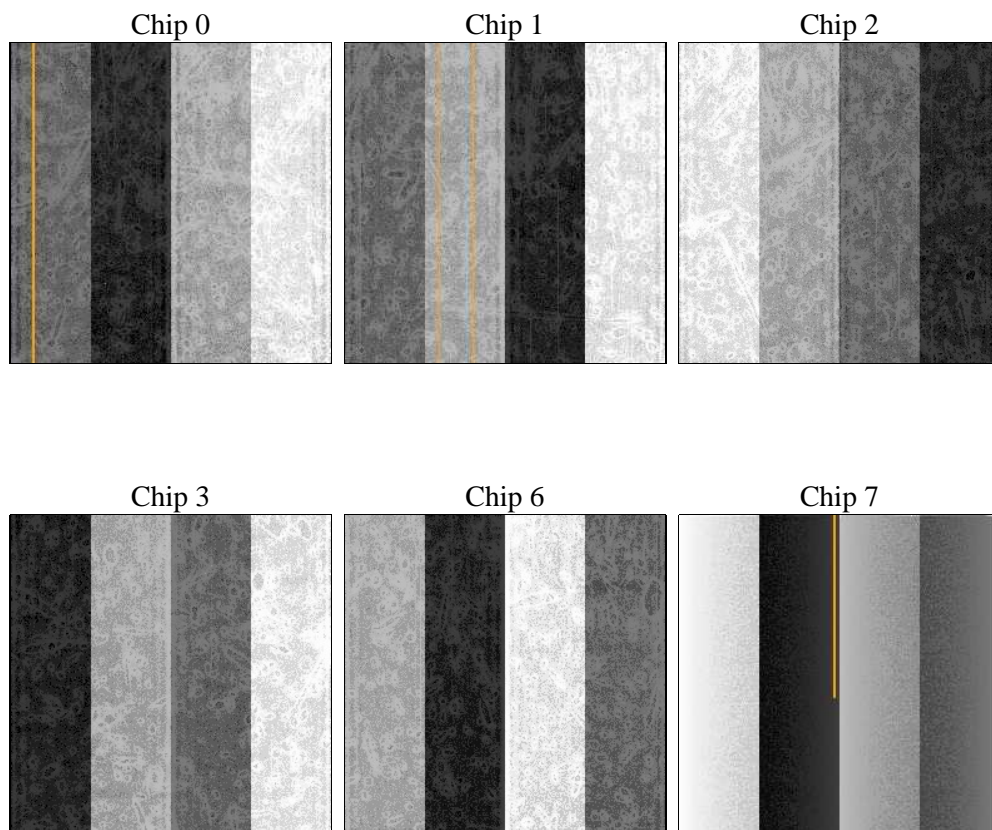
2 OBI

2.1 OBI

2.1.1 Images



2.1.2 Bias



2.1.3 Parameters

obi_num	1	Obi number	sched_exp_time	0.0	[s] Scheduled observation exposure time
ascdsver	8.4.5	Processing system revision	ontime	7811.199970901	Sum of GTIs [s]
caldsver	4.5.2	 	ontime0	5147.1064885855	Sum of GTIs [s]
date	2012-11-08T11:54:35	Date and time of file creation	ontime1	5315.2738430202	Sum of GTIs [s]
revision	3	Processing version of data	ontime2	5013.8621012866	Sum of GTIs [s]
			ontime3	5137.3905929625	Sum of GTIs [s]
			ontime6	5467.8410709798	Sum of GTIs [s]
			ontime7	7811.199970901	Sum of GTIs [s]
			l1events	1421711	Number of level 1 events

2.1.4 Events

	ccd 0	ccd 1	ccd 2	ccd 3	ccd 6	ccd 7		ccd 0	ccd 1	ccd 2	ccd 3	ccd 6	ccd 7
level 1 events	211070	220466	208838	216148	236694	328495	grade 0 events	101246	104344	101382	104909	111810	74437
rejected events	27836	29642	28215	29547	31145	35766		47%	47%	48%	48%	47%	22%
rejected %	13%	13%	13%	13%	13%	10%	grade 1 events	490	437	510	576	469	172
								0%	0%	0%	0%	0%	0%
							grade 2 events	31710	34442	30373	31854	35416	64847
								15%	15%	14%	14%	14%	19%
							grade 3 events	11722	11819	11738	11937	12543	29281
								5%	5%	5%	5%	5%	8%
							grade 4 events	11786	12041	11714	12098	12687	29073
								5%	5%	5%	5%	5%	8%
							grade 5 events	1952	2090	1919	2048	2305	6751
								0%	0%	0%	0%	0%	2%
							grade 6 events	26895	28178	25416	25938	33211	95213
								12%	12%	12%	12%	14%	28%
							grade 7 events	25269	27115	25786	26788	28253	28721
								11%	12%	12%	12%	11%	8%

2.2 Compared Parameters

Parameter	Planned	Actual
Instrument	ACIS	ACIS
Detector	ACIS-012367	ACIS-012367
Grating	NONE	NONE
Data mode	FAINT	FAINT
Observation mode	SECONDARY	SECONDARY
[deg] Pointing RA	0	59.97834324070392
[deg] Pointing Dec	0	32.9778771129994
[deg] Pointing Roll	0.0	197.7178706371423
[mm] SIM focus pos	-0.782348	-0.6828225247311905
[mm] SIM defocus	0	0.8505141146731063
[mm] SIM translation stage pos	-233.592463	250.466033080201
[mm] SIM translation stage offset	0	-0.01005468664627074
[s] Observation start time (MET)	186415360.4598	186415359.43509
Observation start date	2003-11-28T14:02:40	2003-11-28T14:02:39
[s] Observation end time (MET)	186434827.260644	186434826.23594
Observation end date	2003-11-28T19:27:07	2003-11-28T19:27:06
Read mode	TIMED	TIMED

Parameter	Planned	Actual
Obspar format version number	7	7
Obspar file type	PREDICTED	ACTUAL
Obspar update status	NONE	UPDATED
On-chip summing requested	N	N
Subarray requested	NONE	NONE
Alternating exposures requested	N	N
[s] Primary exposure time	0.000000	3.2

2.3 Star Slots

2.4 FID Slots

A Summary

A.1 Status

V&V Scientist	Beth Sundheim
V&V Date (YYYY-MM-DD)	2012.12.11
V&V Edition	1
V&V Disposition and Status	OK
V&V Charge Time	7.811199970901

A.2 Comments