

V&V Reference Report

L2 ASCDS Version : 7.6.7.2

Observation 60139 - L2 Version 001
Chandra X-Ray Center

L2 Processing Date : Apr 29 2006

Contents

1	Front	2
2	OBI	3
2.1	OBI	3
2.1.1	Images	3
2.1.2	Bias	3
2.1.3	Parameters	4
2.1.4	Events	4
2.2	Compared Parameters	5
2.3	Aspect	6
2.4	Star Slots	8
2.5	FID Slots	8
A	Summary	9
A.1	Status	9
A.2	Comments	9

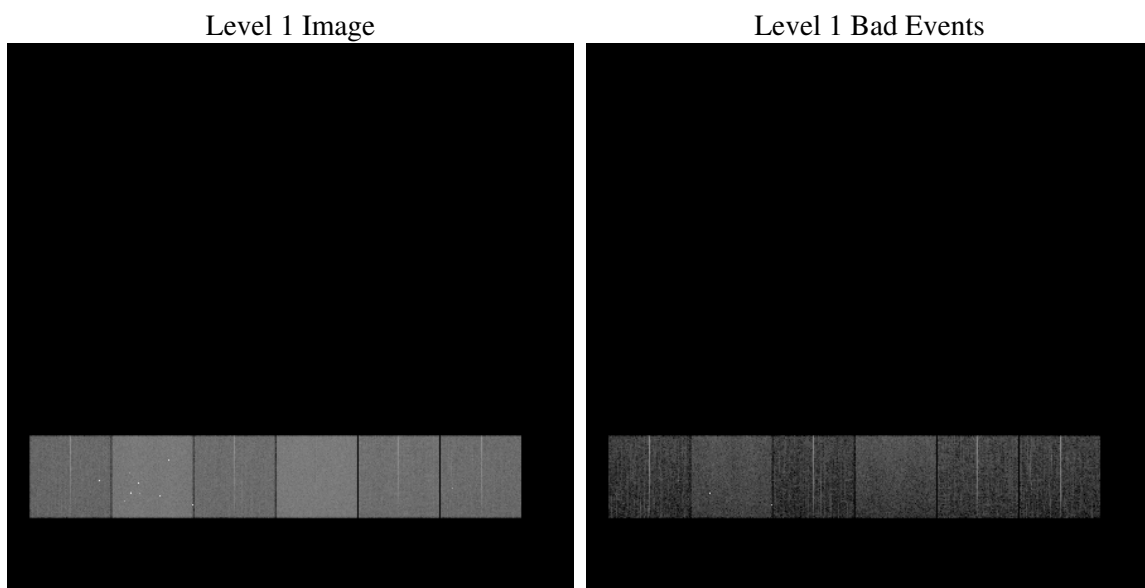
1 Front

seq_num	
obs_id	60139
title	ACIS-456789 diagnostics
observer	CHANDRA engineering request/realtime commanding
object	
dtcycle	0
cycle	P
ra_targ	0.0
dec_targ	0.0
ra_nom	274.00304026557
dec_nom	-14.028545727016
roll_nom	240.09971394311
revision	2
ontime	8274.3610613942
livetime	8169.5861194128
ontime4	5182.5947930217
ontime5	8274.4021013975
ontime6	5752.9663162231
ontime7	8274.3610613942
ontime8	5941.025179863
ontime9	5671.8181714416
l2events	1105228

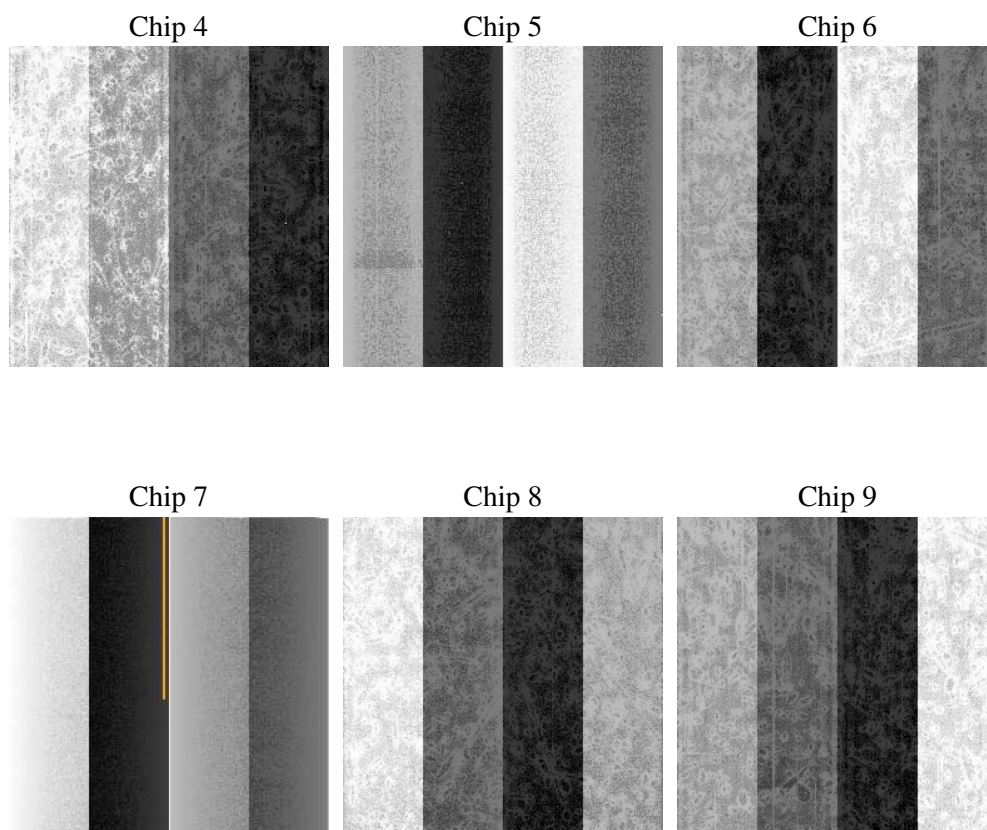
2 OBI

2.1 OBI

2.1.1 Images



2.1.2 Bias



2.1.3 Parameters

obi_num	0
ascdsver	7.6.7.2
caldsver	3.2.1
date	2006-04-29T22:54:30
revision	2

sched_exp_time	0.0
ontime	8277.5245870948
ontime4	5185.6351987123
ontime5	8277.5245870948
ontime6	5756.0477619171
ontime7	8277.5245870948
ontime8	5944.0245455801
ontime9	5675.0227371454
l1events	1498430

2.1.4 Events

	ccd 4	ccd 5	ccd 6	ccd 7	ccd 8	ccd 9
level 1 events	193530	312687	220307	319325	238704	213877
rejected events	45321	70650	43921	63217	51319	45595
rejected %	23%	22%	19%	19%	21%	21%

	ccd 4	ccd 5	ccd 6	ccd 7	ccd 8	ccd 9
grade 0 events	86965	30851	95825	42015	101859	93301
	44%	9%	43%	13%	42%	43%
grade 1 events	686	121	531	119	546	558
	0%	0%	0%	0%	0%	0%
grade 2 events	22734	110312	30560	78719	32589	28638
	11%	35%	13%	24%	13%	13%
grade 3 events	9966	7069	10946	17945	12283	10697
	5%	2%	4%	5%	5%	5%
grade 4 events	9862	6910	10929	17580	12366	10653
	5%	2%	4%	5%	5%	4%
grade 5 events	2527	7168	2749	7251	3392	2964
	1%	2%	1%	2%	1%	1%
grade 6 events	18780	86999	28229	99947	28400	25111
	9%	27%	12%	31%	11%	11%
grade 7 events	42010	63257	40538	55749	47269	41955
	21%	20%	18%	17%	19%	19%

2.2 Compared Parameters

Parameter	Planned	Actual	Parameter	Planned	Actual
Instrument	ACIS	ACIS	Obspar format version number	6	6
Detector	ACIS-456789	ACIS-456789	Obspar file type	PREDICTED	ACTUAL
Grating	NONE	NONE	Obspar update status	NONE	UPDATED
Data mode	FAINT	FAINT	On-chip summing requested	N	N
Observation mode	SECONDARY	SECONDARY	Subarray requested	NONE	NONE
Pointing RA	0	274.0030402655742	Alternating exposures requested	N	N
Pointing Dec	0	-14.02854572701603	Primary exposure time	3.2	3.2
Pointing Roll	0.0	240.0997139431138			
SIM focus pos (mm)	-0.684267	-0.6828225247311905			
SIM defocus (mm)	0	0.8505141146731063			
SIM translation stage pos (mm)	-190.132523	250.466033080201			
SIM translation stage offset (mm)	0	-0.01005468664627074			
Observation start time	205873034.713942	205873033.68894			
Observation start date	2004-07-10T18:57:15	2004-07-10T18:57:13			
Observation end time	205896462.11498	205896461.08998			
Observation end date	2004-07-11T01:27:42	2004-07-11T01:27:41			
Read mode	TIMED	TIMED			

2.3 Aspect

2.4 Star Slots

2.5 FID Slots

A Summary

A.1 Status

V&V Scientist	Jen Lauer
V&V Date (YYYY-MM-DD)	2006.04.30
V&V Edition	1
V&V Disposition and Status	OK
V&V Charge Time	8.27436106

A.2 Comments

The ACIS focal plane temperature increases by more than a degree over the observation, and is above calibration limits for the second half.