

# V&V Reference Report

## L2 ASCDS Version : 7.6.7

Observation 59779 - L2 Version 002  
Chandra X-Ray Center

L2 Processing Date: Feb 25 2006

## Contents

<b>1</b>	<b>Front</b>	<b>2</b>
<b>2</b>	<b>OBI</b>	<b>3</b>
2.1	OBI . . . . .	3
2.1.1	Images . . . . .	3
2.1.2	Bias . . . . .	3
2.1.3	Parameters . . . . .	4
2.1.4	Events . . . . .	4
2.2	Compared Parameters . . . . .	5
2.3	Aspect . . . . .	6
2.4	Star Slots . . . . .	8
2.5	FID Slots . . . . .	8
<b>A</b>	<b>Summary</b>	<b>9</b>
A.1	Status . . . . .	9
A.2	Comments . . . . .	9

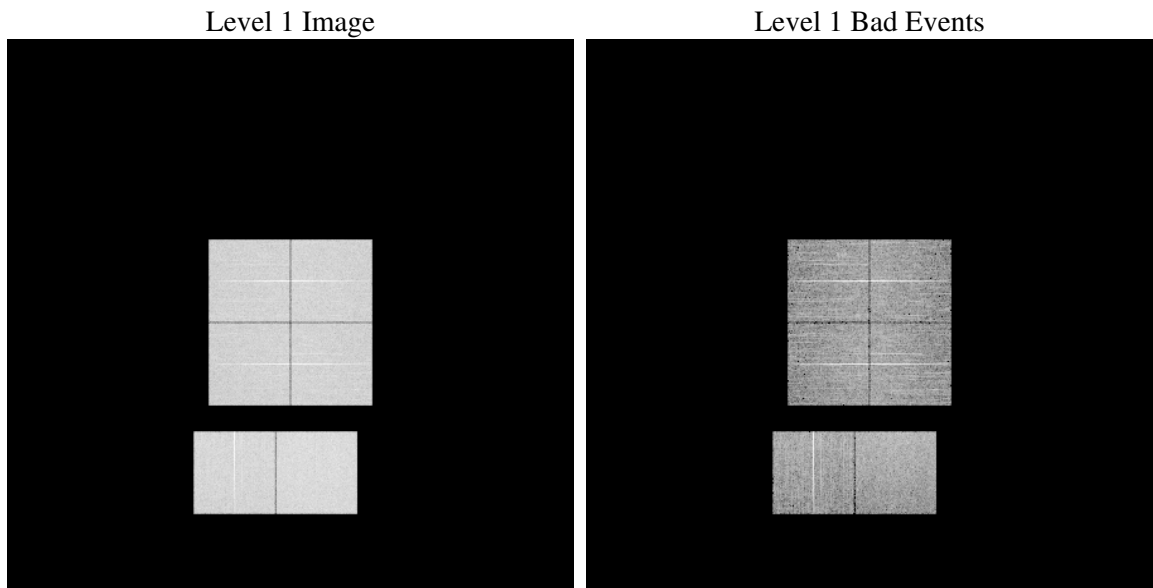
# 1 Front

seq_num	&#160
obs_id	59779
title	ACIS-012367 diagnostics
observer	CHANDRA engineering request/realtime commanding
object	&#160
dtcycle	0
cycle	P
ra_targ	0.0
dec_targ	0.0
ra_nom	169.49048013401
dec_nom	6.0274055216914
roll_nom	74.270547733879
revision	2
ontime	8220.7999693751
livetime	8116.7032501914
ontime0	7284.1584034264
ontime1	7468.8930545747
ontime2	7060.5307745636
ontime3	7161.0009438694
ontime6	7695.7621814311
ontime7	8220.7999693751
l2events	1103653

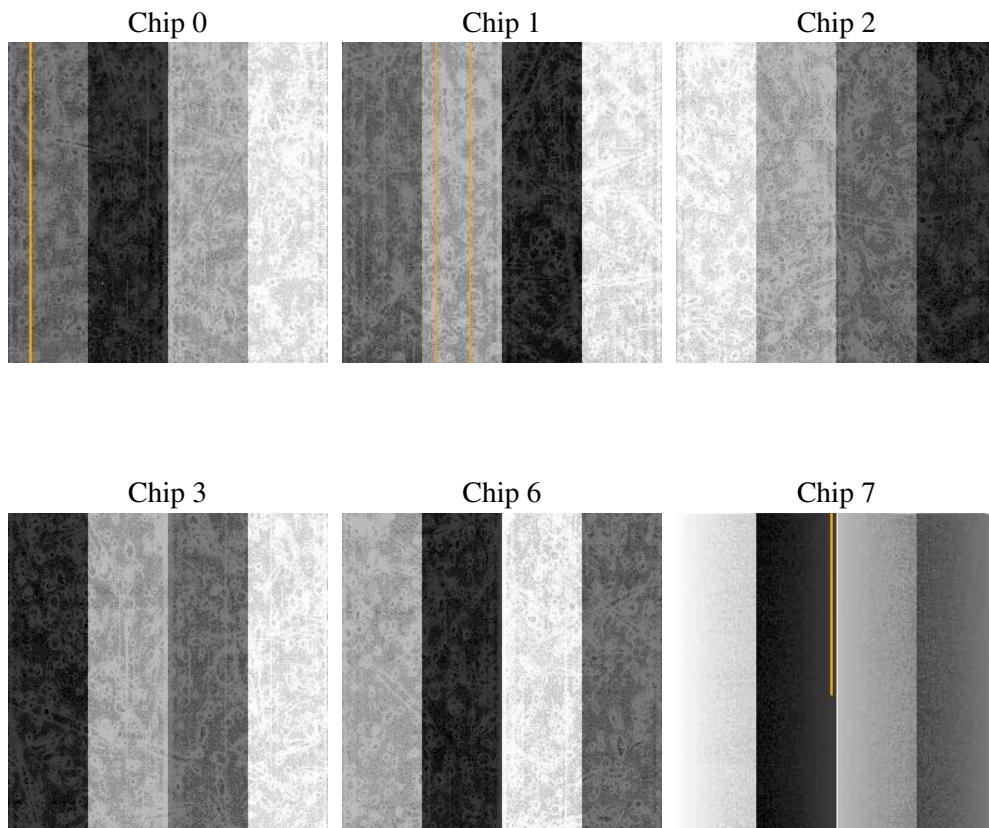
## 2 OBI

### 2.1 OBI

#### 2.1.1 Images



#### 2.1.2 Bias



### 2.1.3 Parameters

obi_num	0
ascdsver	7.6.7
caldbver	3.2.1
date	2006-02-25T17:13:17
revision	2

sched_exp_time	0.0
ontime	8284.012555033
ontime0	7337.64806813
ontime1	7525.6236796677
ontime2	7107.5384886861
ontime3	7214.4905687571
ontime6	7758.9747670889
ontime7	8284.012555033
l1events	1492057

### 2.1.4 Events

	ccd 0	ccd 1	ccd 2	ccd 3	ccd 6	ccd 7
level 1 events	235451	241015	231598	237056	261881	285056
rejected events	52095	52245	51669	54206	58616	62915
rejected %	22%	21%	22%	22%	22%	22%

	ccd 0	ccd 1	ccd 2	ccd 3	ccd 6	ccd 7
grade 0 events	101450	103643	100893	103436	111117	37198
	43%	43%	43%	43%	42%	13%
grade 1 events	593	510	653	650	577	118
	0%	0%	0%	0%	0%	0%
grade 2 events	32389	33985	30633	31301	35220	68115
	13%	14%	13%	13%	13%	23%
grade 3 events	12048	12254	11961	12069	12962	15574
	5%	5%	5%	5%	4%	5%
grade 4 events	12060	12172	12112	12032	12927	15331
	5%	5%	5%	5%	4%	5%
grade 5 events	3213	3283	2939	3425	3598	7108
	1%	1%	1%	1%	1%	2%
grade 6 events	26838	28147	25607	25374	32785	87600
	11%	11%	11%	10%	12%	30%
grade 7 events	46860	47021	46800	48769	52695	54012
	19%	19%	20%	20%	20%	18%

## 2.2 Compared Parameters

Parameter	Planned	Actual	Parameter	Planned	Actual
Instrument	ACIS	ACIS	Obspar format version number	6	6
Detector	ACIS-012367	ACIS-012367	Obspar file type	PREDICTED	ACTUAL
Grating	NONE	NONE	Obspar update status	NONE	UPDATED
Data mode	FAINT	FAINT	On-chip summing requested	N	N
Observation mode	SECONDARY	SECONDARY	Subarray requested	NONE	NONE
Pointing RA	0	169.4904801340059	Alternating exposures requested	N	N
Pointing Dec	0	6.027405521691398	Primary exposure time	3.2	3.2
Pointing Roll	0.0	74.27054773387927			
SIM focus pos (mm)	-0.782348	-0.7809083437167272			
SIM defocus (mm)	0	0.7524282956875696			
SIM translation stage pos (mm)	-233.592463	250.466033080201			
SIM translation stage offset (mm)	0	-0.01005468664627074			
Observation start time	225749519.904954	225749518.87996			
Observation start date	2005-02-25T20:12:00	2005-02-25T20:11:58			
Observation end time	225773345.006033	225773343.98104			
Observation end date	2005-02-26T02:49:05	2005-02-26T02:49:03			
Read mode	TIMED	TIMED			

## 2.3 Aspect



## **2.4 Star Slots**

## **2.5 FID Slots**



## A Summary

### A.1 Status

V&V Scientist	Doug Morgan
V&V Date (YYYY-MM-DD)	2006.02.26
V&V Edition	1
V&V Disposition and Status	OK
V&V Charge Time	8.22079996

### A.2 Comments