

V&V Reference Report

L2 ASCDS Version : 7.6.7.1

Observation 59639 - L2 Version 002
Chandra X-Ray Center

L2 Processing Date : Mar 8 2006

Contents

1	Front	2
2	OBI	3
2.1	OBI	3
2.1.1	Images	3
2.1.2	Bias	3
2.1.3	Parameters	4
2.1.4	Events	4
2.2	Compared Parameters	5
2.3	Aspect	6
2.4	Star Slots	8
2.5	FID Slots	8
A	Summary	9
A.1	Status	9
A.2	Comments	9

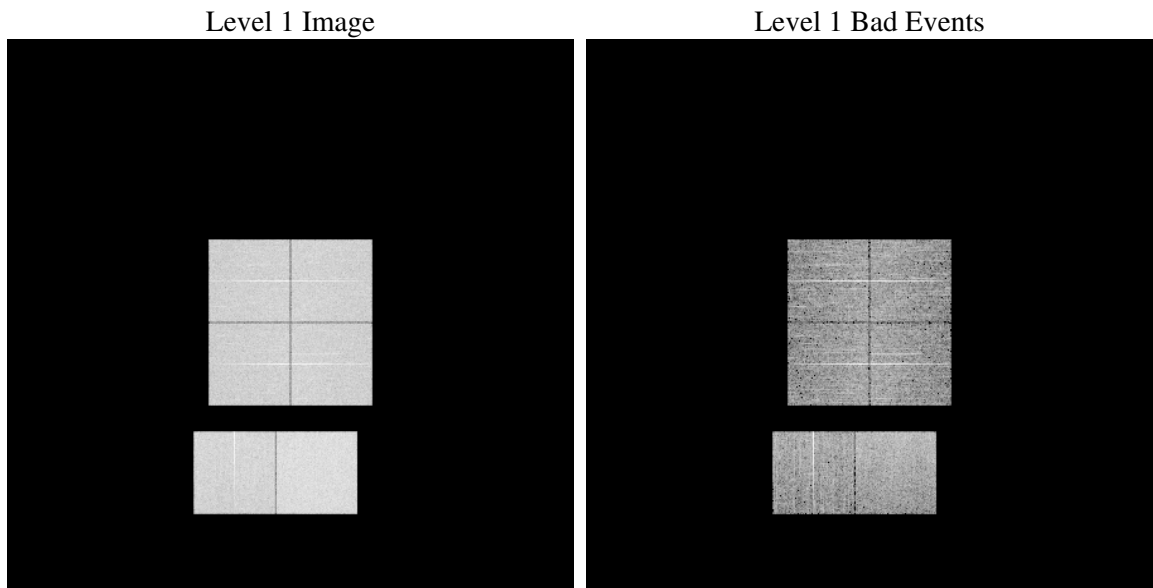
1 Front

seq_num	
obs_id	59639
title	ACIS-012367 diagnostics
observer	CHANDRA engineering request/realtime commanding
object	
dtcycle	0
cycle	P
ra_targ	0.0
dec_targ	0.0
ra_nom	276.48394254315
dec_nom	-24.475995412853
roll_nom	90.141307794439
revision	2
ontime	5646.9742790163
livetime	5575.4688904957
ontime0	4370.0670516789
ontime1	4428.4453186691
ontime2	4289.123927325
ontime3	4389.4306540489
ontime6	4593.817933172
ontime7	5646.9742790163
l2events	774472

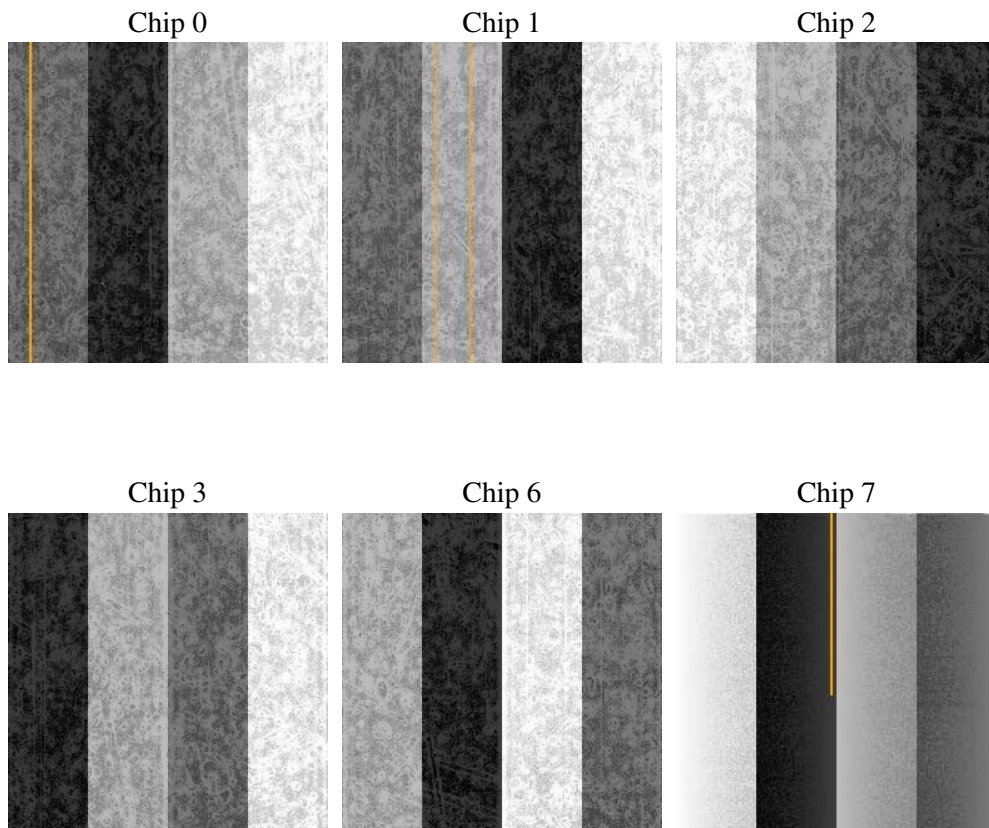
2 OBI

2.1 OBI

2.1.1 Images



2.1.2 Bias



2.1.3 Parameters

obi_num	0
ascdsver	7.6.7.1
caldbver	3.2.1
date	2006-03-09T01:11:41
revision	2

sched_exp_time	0.0
ontime	5649.0846075118
ontime0	4372.1363401711
ontime1	4430.473567158
ontime2	4291.1111358106
ontime3	4391.5820225477
ontime6	4595.7641016841
ontime7	5649.0846075118
l1events	1030272

2.1.4 Events

	ccd 0	ccd 1	ccd 2	ccd 3	ccd 6	ccd 7
level 1 events	158649	162121	156609	162469	176439	213985
rejected events	32935	33543	33638	34241	38144	44419
rejected %	20%	20%	21%	21%	21%	20%

	ccd 0	ccd 1	ccd 2	ccd 3	ccd 6	ccd 7
grade 0 events	68028	68853	68148	70809	72948	28805
	42%	42%	43%	43%	41%	13%
grade 1 events	429	363	478	491	438	79
	0%	0%	0%	0%	0%	0%
grade 2 events	21675	23256	20562	21589	23854	52381
	13%	14%	13%	13%	13%	24%
grade 3 events	8027	7950	8036	8186	8442	11458
	5%	4%	5%	5%	4%	5%
grade 4 events	7859	7833	7865	8241	8426	11283
	4%	4%	5%	5%	4%	5%
grade 5 events	2011	1983	1927	2155	2317	4983
	1%	1%	1%	1%	1%	2%
grade 6 events	20214	20796	18464	19513	24726	65740
	12%	12%	11%	12%	14%	30%
grade 7 events	30406	31087	31129	31485	35288	39256
	19%	19%	19%	19%	20%	18%

2.2 Compared Parameters

Parameter	Planned	Actual	Parameter	Planned	Actual
Instrument	ACIS	ACIS	Obspar format version number	6	6
Detector	ACIS-012367	ACIS-012367	Obspar file type	PREDICTED	ACTUAL
Grating	NONE	NONE	Obspar update status	NONE	UPDATED
Data mode	FAINT	FAINT	On-chip summing requested	N	N
Observation mode	SECONDARY	SECONDARY	Subarray requested	NONE	NONE
Pointing RA	0	276.4839425431543	Alternating exposures requested	N	N
Pointing Dec	0	-24.47599541285338	Primary exposure time	3.2	3.2
Pointing Roll	0.0	90.14130779443933			
SIM focus pos (mm)	-0.782348	-0.6828225247311905			
SIM defocus (mm)	0	0.8505141146731063			
SIM translation stage pos (mm)	-233.592463	250.466033080201			
SIM translation stage offset (mm)	0	-0.01005468664627074			
Observation start time	233941492.477259	233941491.45227			
Observation start date	2005-05-31T15:44:52	2005-05-31T15:44:51			
Observation end time	233954177.877837	233954176.85285			
Observation end date	2005-05-31T19:16:18	2005-05-31T19:16:16			
Read mode	TIMED	TIMED			

2.3 Aspect

2.4 Star Slots

2.5 FID Slots

A Summary

A.1 Status

V&V Scientist	Beth Sundheim
V&V Date (YYYY-MM-DD)	2006.03.09
V&V Edition	1
V&V Disposition and Status	OK
V&V Charge Time	5.64697427

A.2 Comments