

# V&V Reference Report

## L2 ASCDS Version : 7.6.7.1

Observation 59499 - L2 Version 002  
Chandra X-Ray Center

L2 Processing Date : Mar 20 2006

## Contents

<b>1</b>	<b>Front</b>	<b>2</b>
<b>2</b>	<b>OBI</b>	<b>3</b>
2.1	OBI . . . . .	3
2.1.1	Images . . . . .	3
2.1.2	Bias . . . . .	3
2.1.3	Parameters . . . . .	4
2.1.4	Events . . . . .	4
2.2	Compared Parameters . . . . .	5
2.3	Aspect . . . . .	6
2.4	Star Slots . . . . .	8
2.5	FID Slots . . . . .	8
<b>A</b>	<b>Summary</b>	<b>9</b>
A.1	Status . . . . .	9
A.2	Comments . . . . .	9

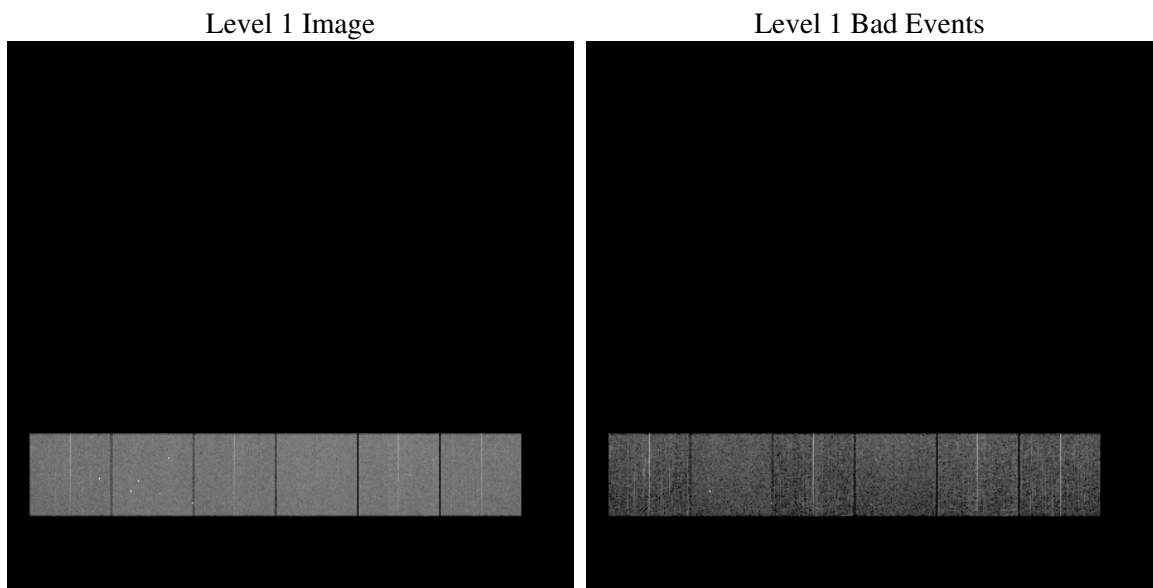
# 1 Front

seq_num	&#160
obs_id	59499
title	ACIS-456789 diagnostics
observer	CHANDRA engineering request/realtime commanding
object	&#160
dtcycle	0
cycle	P
ra_targ	0.0
dec_targ	0.0
ra_nom	337.95839691117
dec_nom	19.995438490306
roll_nom	162.92683860148
revision	2
ontime	5609.1586667299
livetime	5538.1321222619
ontime4	5116.6546120644
ontime5	5609.1997067332
ontime6	5408.3008579314
ontime7	5609.1586667299
ontime8	5554.2263814509
ontime9	5333.6354510784
l2events	714715

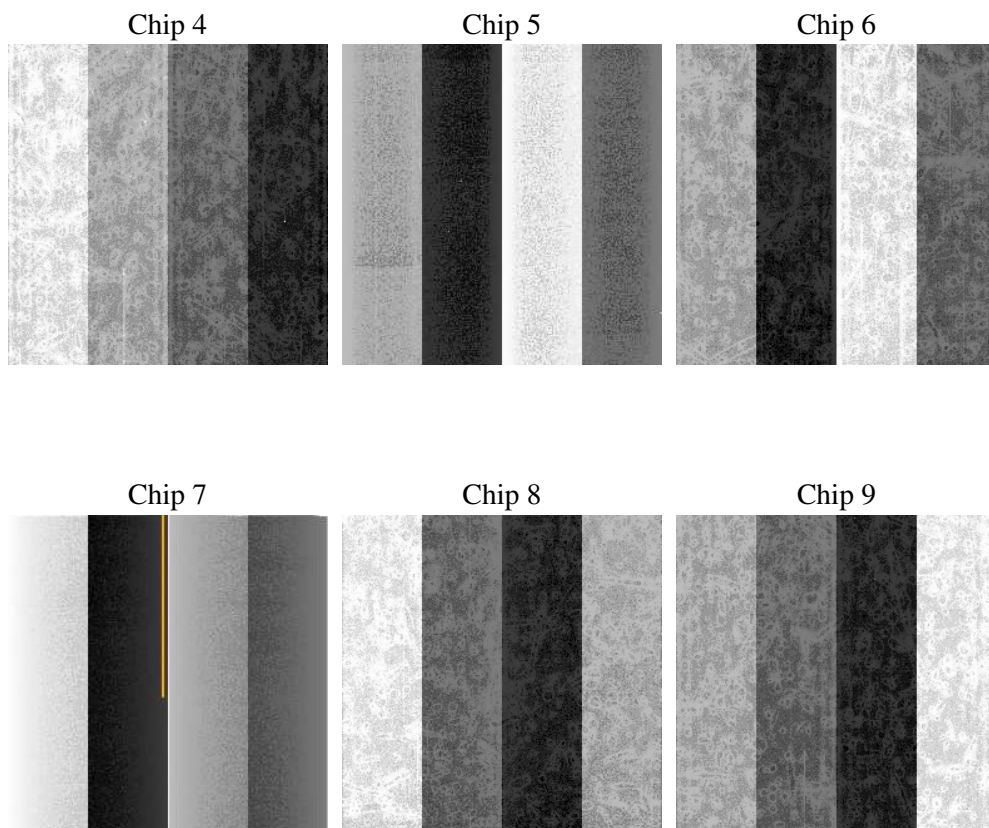
## 2 OBI

### 2.1 OBI

#### 2.1.1 Images



#### 2.1.2 Bias



### 2.1.3 Parameters

obi_num	0
ascdsver	7.6.7.1
caldsver	3.2.1
date	2006-03-20T21:57:01
revision	2

sched_exp_time	0.0
ontime	5610.1740271747
ontime4	5117.5468524992
ontime5	5610.1740271747
ontime6	5409.2341383696
ontime7	5610.1740271747
ontime8	5555.0775819123
ontime9	5334.6918515265
l1events	1014384

### 2.1.4 Events

	ccd 4	ccd 5	ccd 6	ccd 7	ccd 8	ccd 9
level 1 events	154592	172357	166175	179344	180144	161772
rejected events	41822	43700	38606	40221	44941	40411
rejected %	27%	25%	23%	22%	24%	24%

	ccd 4	ccd 5	ccd 6	ccd 7	ccd 8	ccd 9
grade 0 events	65699	15793	69264	24194	72992	66729
	42%	9%	41%	13%	40%	41%
grade 1 events	504	198	346	76	398	389
	0%	0%	0%	0%	0%	0%
grade 2 events	17857	58376	22059	41440	23778	20731
	11%	33%	13%	23%	13%	12%
grade 3 events	7550	3952	8027	10171	8990	7756
	4%	2%	4%	5%	4%	4%
grade 4 events	7395	3997	7947	9937	8995	7760
	4%	2%	4%	5%	4%	4%
grade 5 events	2315	4589	2557	4838	3130	2793
	1%	2%	1%	2%	1%	1%
grade 6 events	14269	46539	20272	53381	20448	18385
	9%	27%	12%	29%	11%	11%
grade 7 events	39003	38913	35703	35307	41413	37229
	25%	22%	21%	19%	22%	23%

## 2.2 Compared Parameters

Parameter	Planned	Actual	Parameter	Planned	Actual
Instrument	ACIS	ACIS	Obspar format version number	6	6
Detector	ACIS-456789	ACIS-456789	Obspar file type	PREDICTED	ACTUAL
Grating	NONE	NONE	Obspar update status	NONE	UPDATED
Data mode	FAINT	FAINT	On-chip summing requested	N	N
Observation mode	SECONDARY	SECONDARY	Subarray requested	NONE	NONE
Pointing RA	0	337.958396911169	Alternating exposures requested	N	N
Pointing Dec	0	19.99543849030642	Primary exposure time	3.2	3.2
Pointing Roll	0.0	162.9268386014815			
SIM focus pos (mm)	-0.684267	-0.6828225247311905			
SIM defocus (mm)	0	0.8505141146731063			
SIM translation stage pos (mm)	-190.132523	250.466033080201			
SIM translation stage offset (mm)	0	-0.01005468664627074			
Observation start time	240789579.290501	240789578.26549			
Observation start date	2005-08-18T21:59:39	2005-08-18T21:59:38			
Observation end time	240807240.041311	240807239.0163			
Observation end date	2005-08-19T02:54:00	2005-08-19T02:53:59			
Read mode	TIMED	TIMED			

## 2.3 Aspect



## **2.4 Star Slots**

## **2.5 FID Slots**



## A Summary

### A.1 Status

V&V Scientist	Doug Morgan
V&V Date (YYYY-MM-DD)	2006.03.20
V&V Edition	1
V&V Disposition and Status	OK
V&V Charge Time	5.60915866

### A.2 Comments