

# V&V Reference Report

## L2 ASCDS Version : 7.6.7.1

Observation 5939 - L2 Version 002  
Chandra X-Ray Center

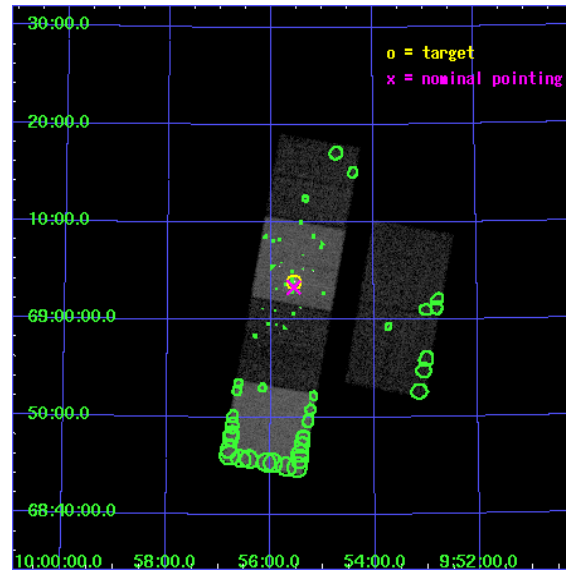
L2 Processing Date : Mar 8 2006

## Contents

<b>1</b>	<b>Front</b>	<b>2</b>
<b>2</b>	<b>OBI</b>	<b>3</b>
2.1	OBI . . . . .	3
2.1.1	Images . . . . .	3
2.1.2	Bias . . . . .	3
2.1.3	Parameters . . . . .	4
2.1.4	Events . . . . .	4
2.2	Compared Parameters . . . . .	5
2.3	Aspect . . . . .	6
2.4	Star Slots . . . . .	9
2.4.1	Slot 3 . . . . .	9
2.4.2	Slot 4 . . . . .	10
2.4.3	Slot 5 . . . . .	11
2.4.4	Slot 6 . . . . .	12
2.4.5	Slot 7 . . . . .	13
2.5	FID Slots . . . . .	14
2.5.1	Slot 0 . . . . .	14
2.5.2	Slot 1 . . . . .	15
2.5.3	Slot 2 . . . . .	16
<b>3</b>	<b>Point Sources</b>	<b>17</b>
<b>A</b>	<b>Summary</b>	<b>18</b>
A.1	Status . . . . .	18
A.2	Comments . . . . .	18

# 1 Front

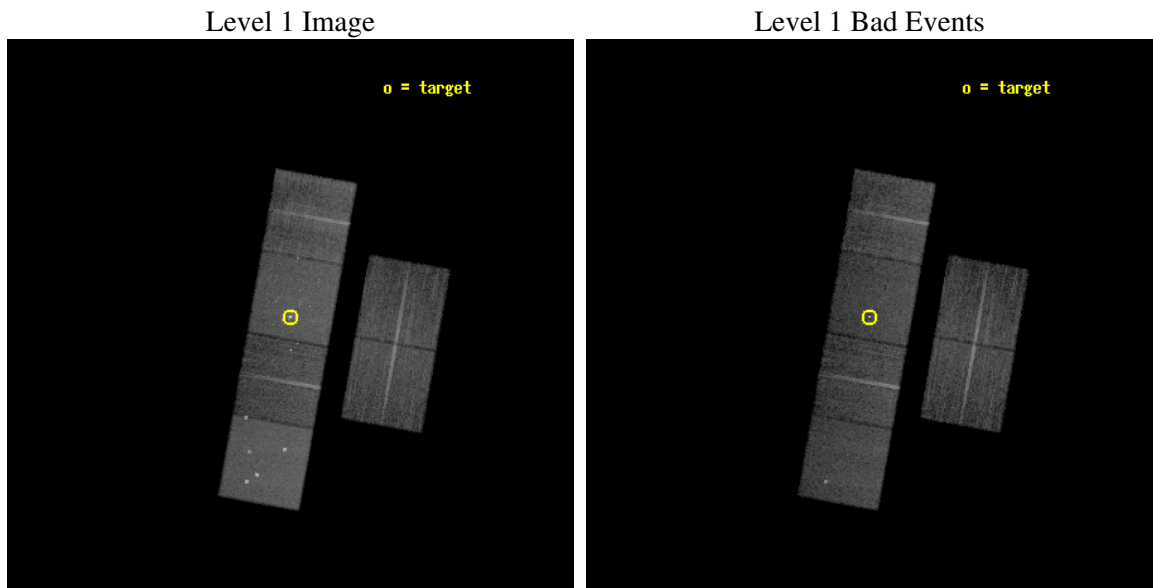
seq_num	600458
obs_id	5939
title	An Unprecedented View of a Galaxy's Dynamic X-ray Source Population
observer	Dr. David Pooley
object	M81
dtcycle	0
cycle	P
ra_targ	148.888333
dec_targ	69.065306
ra_nom	148.88837133185
dec_nom	69.055659062837
roll_nom	280.15659024264
revision	2
ontime	11958.399955451
livetime	11806.975494732
ontime2	11958.399955451
ontime3	11958.399955451
ontime5	11958.399955451
ontime6	11958.399955451
ontime7	11958.399955451
ontime8	11958.399955451
l2events	154971



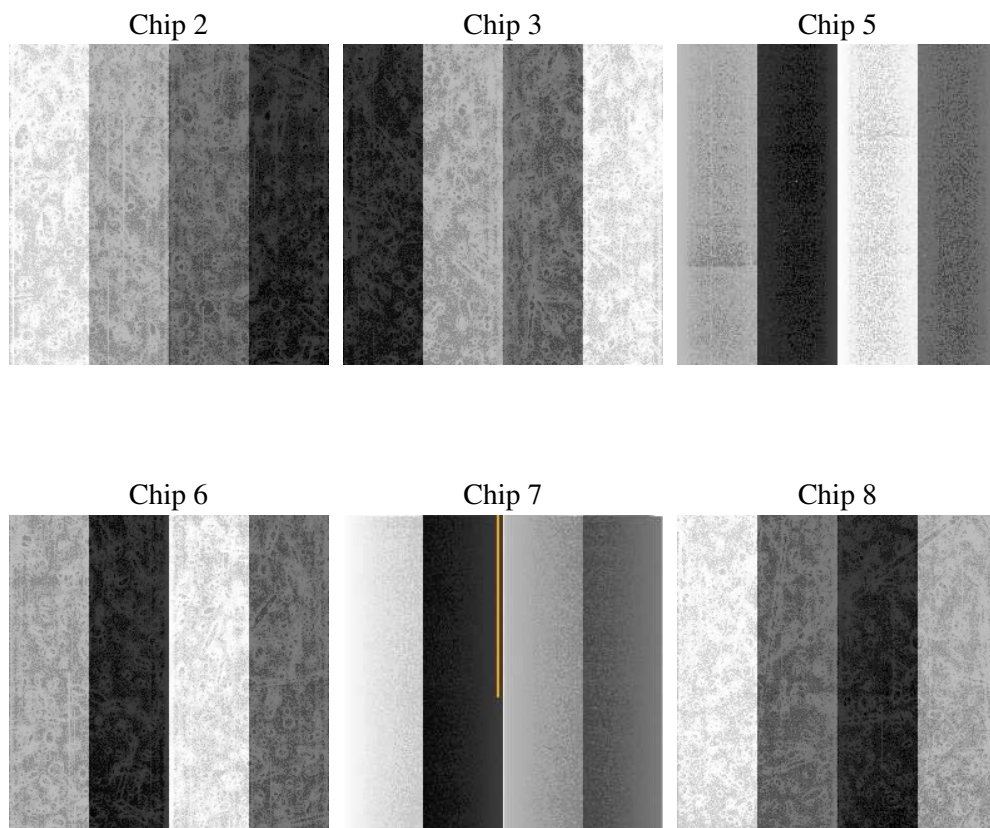
## 2 OBI

### 2.1 OBI

#### 2.1.1 Images



#### 2.1.2 Bias



### 2.1.3 Parameters

obi_num	0
ascdsver	7.6.7.1
caldbver	3.2.1
date	2006-03-08T22:03:03
revision	2

sched_exp_time	12000.000000
ontime	11962.534846127
ontime2	11962.534846127
ontime3	11962.534846127
ontime5	11962.534846127
ontime6	11962.534846127
ontime7	11962.534846127
ontime8	11962.534846127
l1events	679036

### 2.1.4 Events

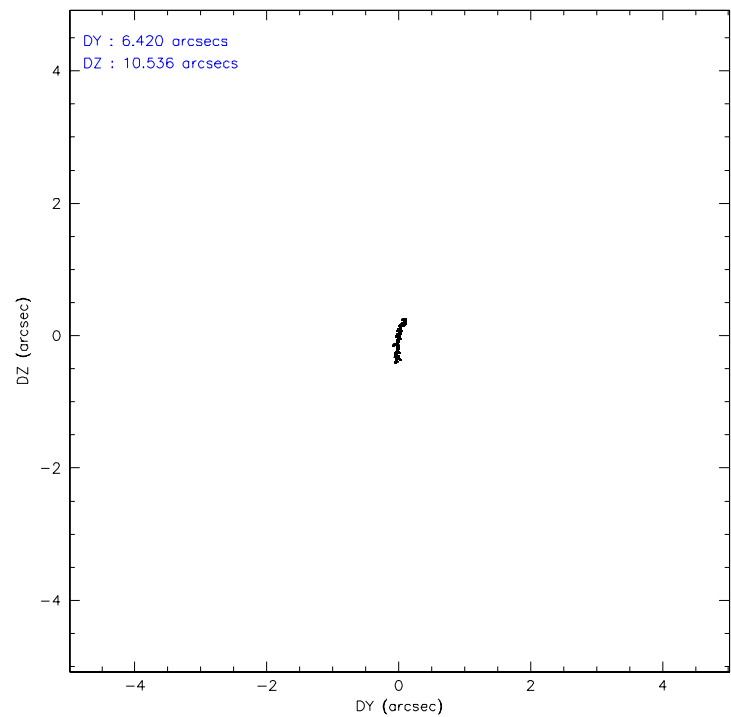
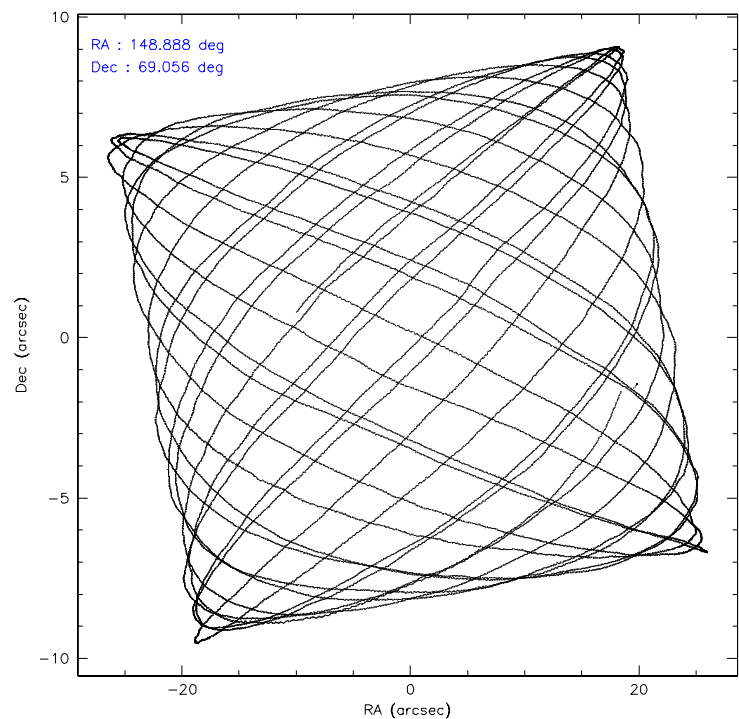
	ccd 2	ccd 3	ccd 5	ccd 6	ccd 7	ccd 8
level 1 events	94096	89904	144063	93719	137807	119447
rejected events	82840	78974	78177	80712	81104	92702
rejected %	88%	87%	54%	86%	58%	77%

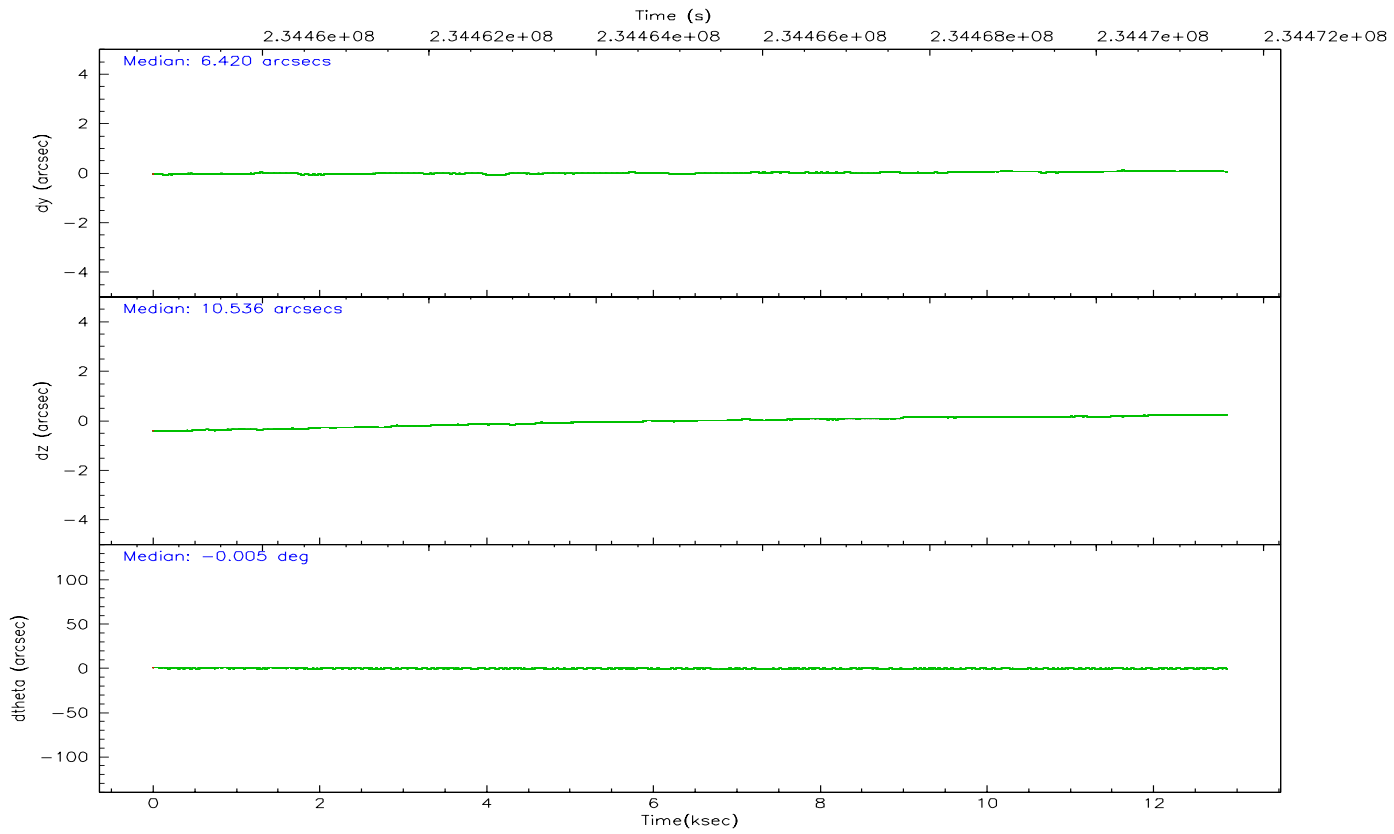
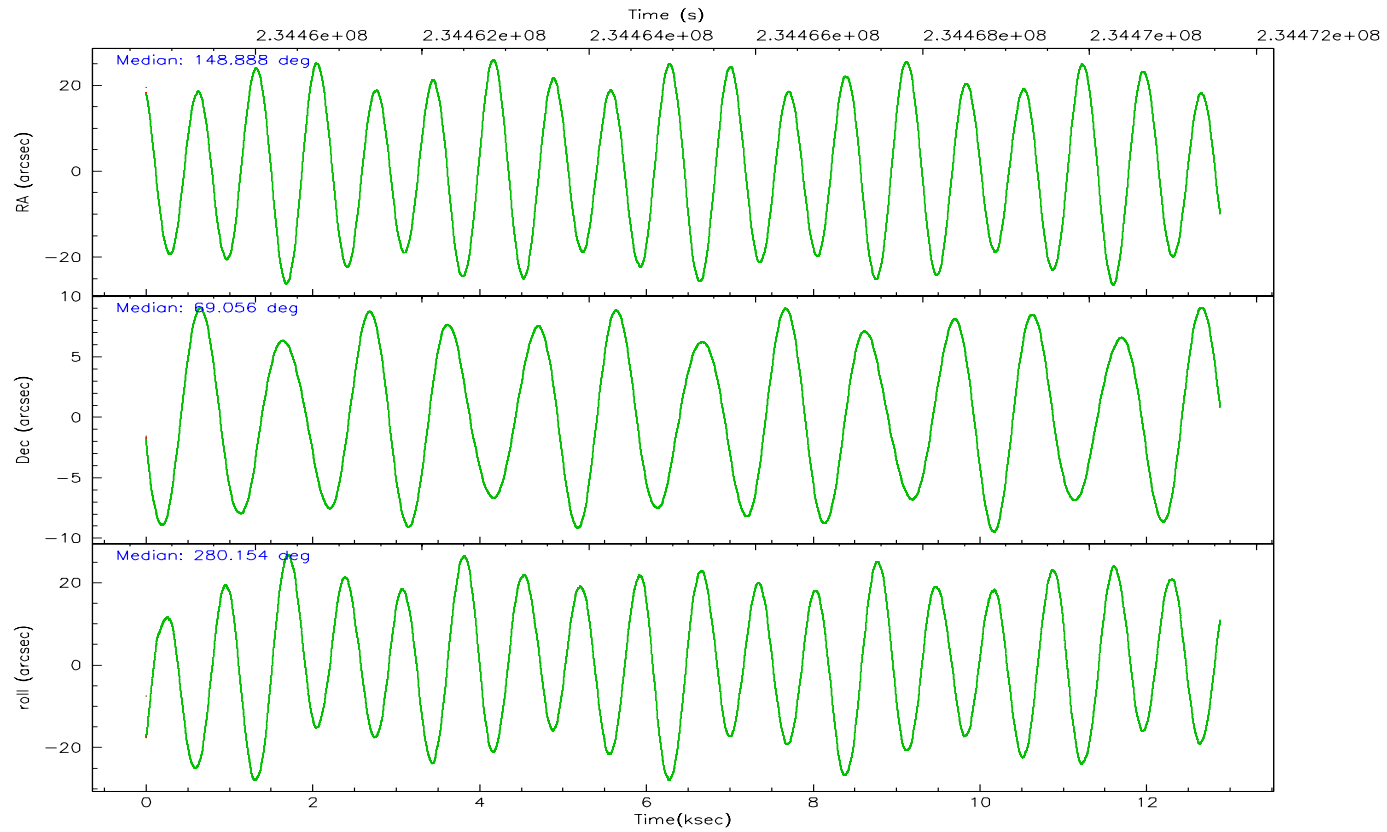
	ccd 2	ccd 3	ccd 5	ccd 6	ccd 7	ccd 8
grade 0 events	5030	4659	8386	5920	4892	8339
	5%	5%	5%	6%	3%	6%
grade 1 events	53	48	133	80	186	70
	0%	0%	0%	0%	0%	0%
grade 2 events	2326	2229	19620	2569	14242	5812
	2%	2%	13%	2%	10%	4%
grade 3 events	1026	1037	1496	1146	3265	3007
	1%	1%	1%	1%	2%	2%
grade 4 events	1017	1069	1367	1062	3243	2842
	1%	1%	0%	1%	2%	2%
grade 5 events	3798	4040	6833	4368	8861	5683
	4%	4%	4%	4%	6%	4%
grade 6 events	1859	1939	35046	2313	31070	6748
	1%	2%	24%	2%	22%	5%
grade 7 events	78987	74883	71182	76261	72048	86946
	83%	83%	49%	81%	52%	72%

## 2.2 Compared Parameters

Parameter	Planned	Actual	Parameter	Planned	Actual
Instrument	ACIS	ACIS	Obspar format version number	6	6
Detector	ACIS-235678	ACIS-235678	Obspar file type	PREDICTED	ACTUAL
Grating	NONE	NONE	Obspar update status	NONE	UPDATED
Data mode	FAINT	FAINT	On-chip summing requested	N	N
Observation mode	POINTING	POINTING	Subarray requested	NONE	NONE
Pointing RA	148.838401	148.8883713318504	Alternating exposures requested	N	N
Pointing Dec	69.076205	69.05565906283746	Primary exposure time	0.000000	3.2
Pointing Roll	280.046645	280.1565902426419			
SIM focus pos (mm)	-0.684267	-0.6828225247311905			
SIM defocus (mm)	0	0.001444936568705701			
SIM translation stage pos (mm)	-190.132523	-190.1400660498719			
SIM translation stage offset (mm)	0	0.00754346686406393			
Observation start time	234459570.184000	234458261.11335			
Observation start date	2005-06-06T15:38:26	2005-06-06T15:17:41			
Observation end time	234471570.184000	234472089.90148			
Observation end date	2005-06-06T18:58:26	2005-06-06T19:08:09			
Read mode	TIMED	TIMED			

2.3 Aspect





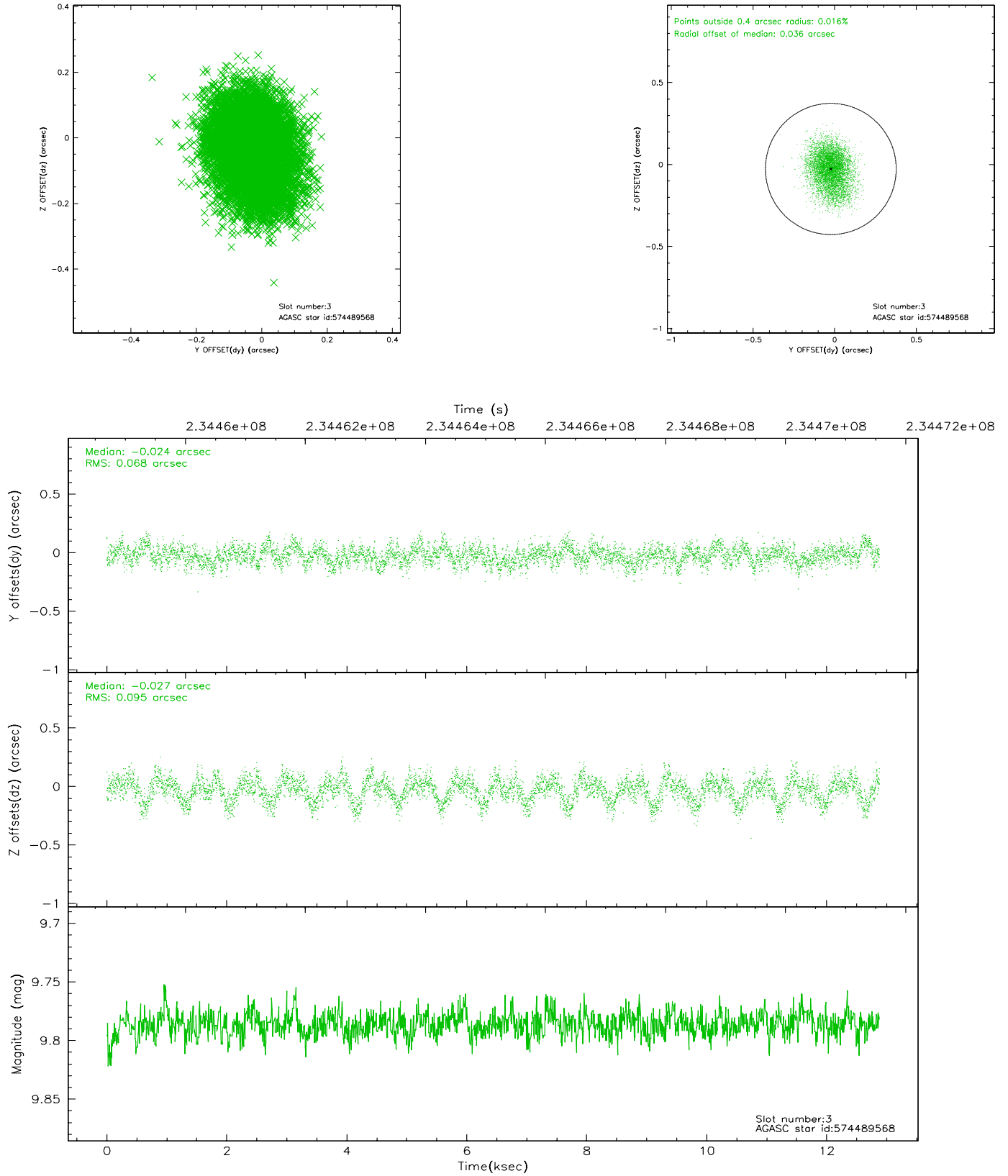
### Slot Statistics

slot	status	id	mag	n_pts	med_dy	med_dz	dr1	dr2	ra	dec	mean_y	mean_z
0	FID	ACIS-S-2	7.10	3141	-0.050	0.010	0.008	0.014	0.000000	0.000000	-759.18	-1731.76
1	FID	ACIS-S-4	7.20	3142	0.038	0.021	0.007	0.014	0.000000	0.000000	2153.98	176.39
2	FID	ACIS-S-5	7.23	3142	-0.020	-0.023	0.007	0.012	0.000000	0.000000	-1811.55	170.38
3	GUIDE	574489568	9.79	6279	-0.024	-0.027	0.126	0.204	147.223974	69.438157	-1665.16	-1777.79
4	GUIDE	574490960	9.74	6280	-0.081	0.033	0.137	0.217	148.185918	69.658768	-2211.59	-437.80
5	GUIDE	574491712	9.89	6270	-0.134	-0.034	0.152	0.232	147.262590	69.570889	-2123.95	-1634.51
6	GUIDE	574496360	9.46	6275	0.075	0.136	0.121	0.191	150.806604	68.529829	2348.33	2217.58
7	GUIDE	574497600	10.43	6237	0.163	-0.094	0.175	0.297	147.824120	68.451903	1969.29	-1710.38

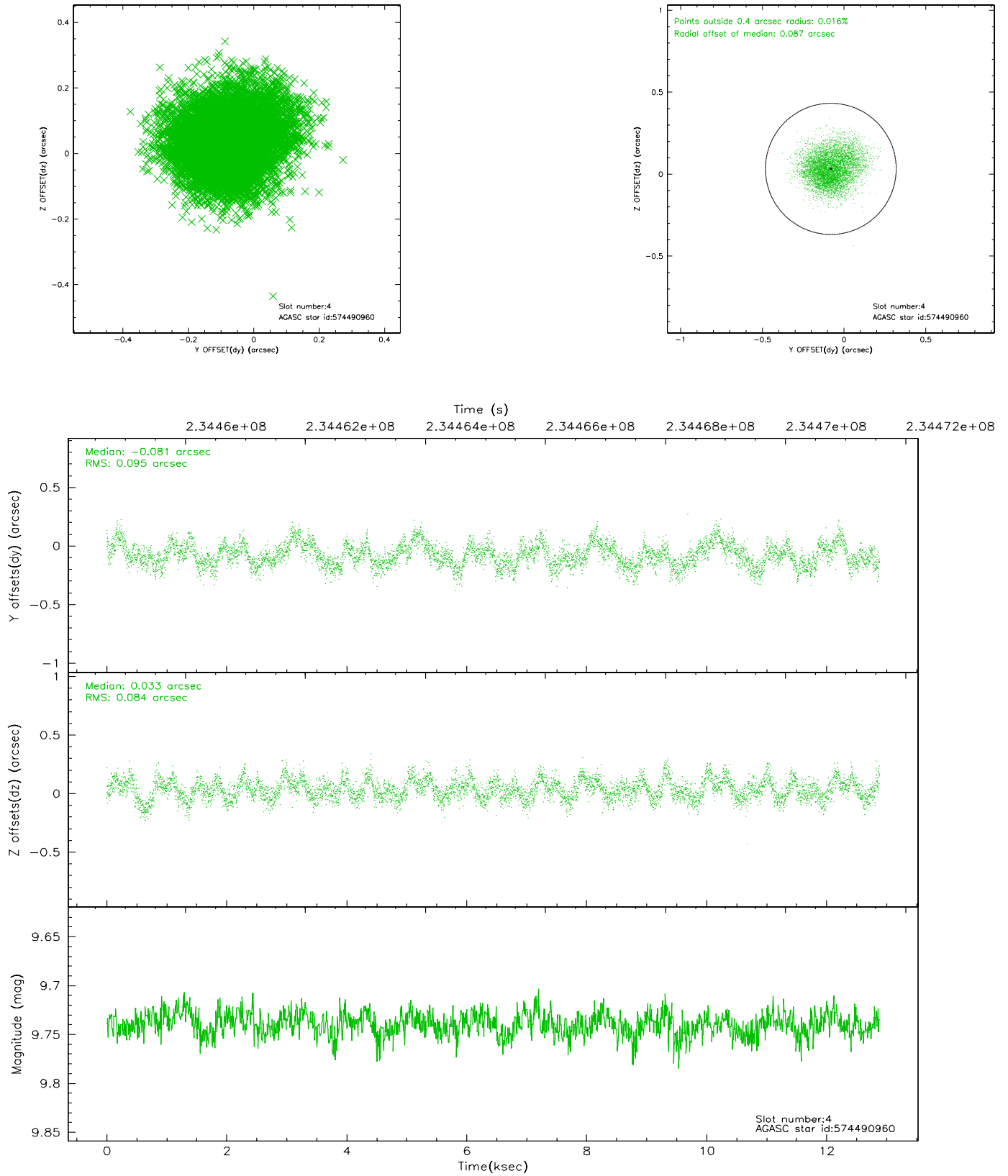


## 2.4 Star Slots

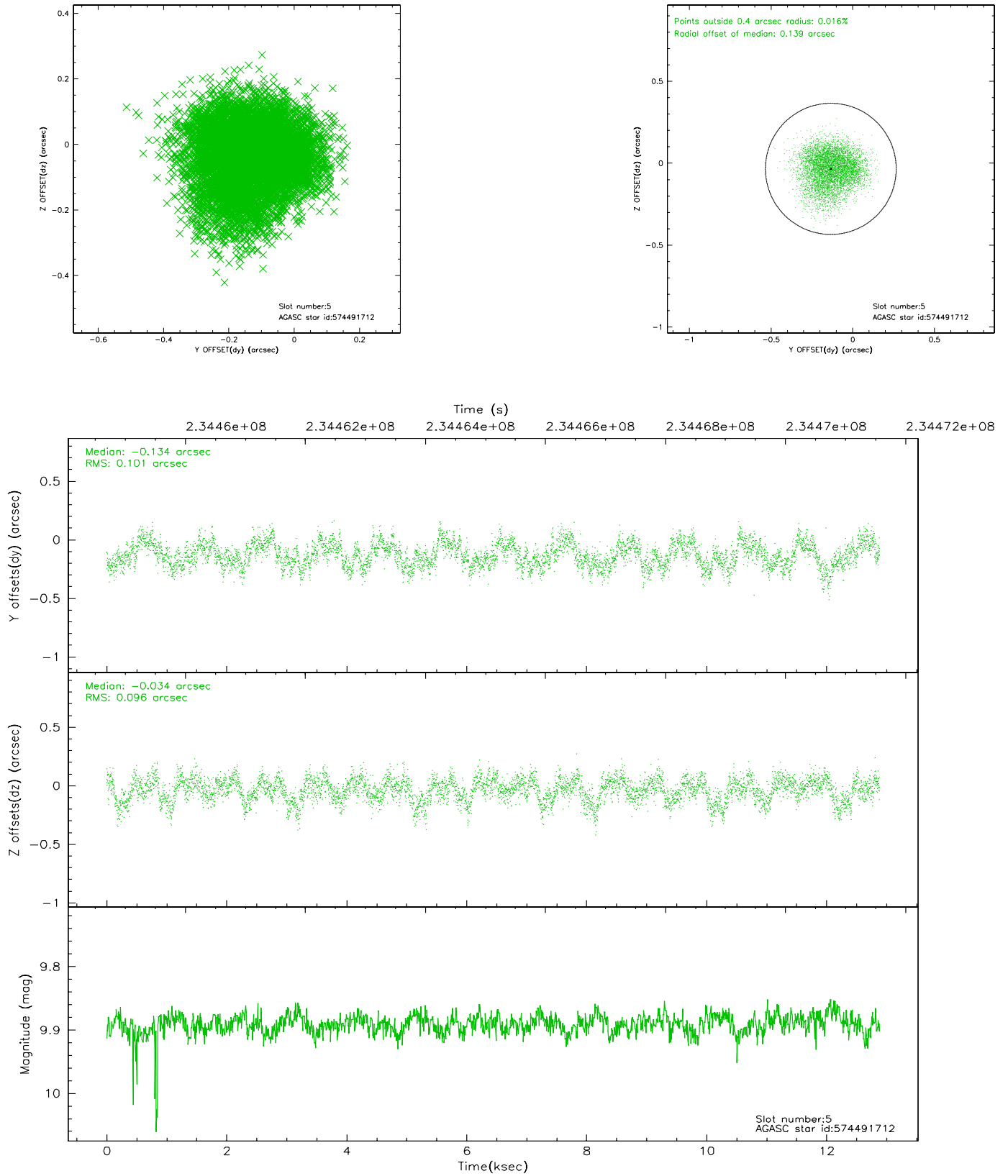
### 2.4.1 Slot 3



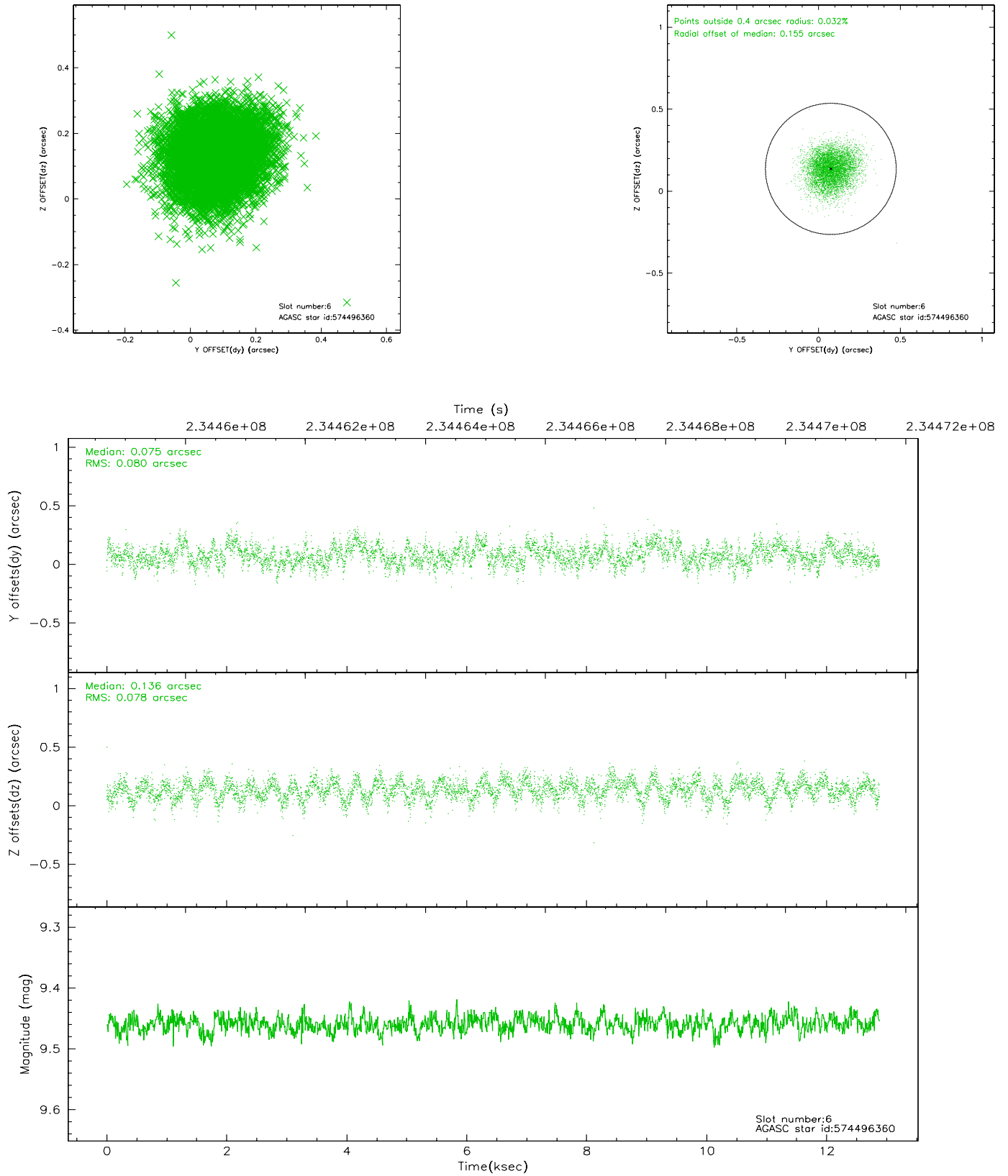
## 2.4.2 Slot 4



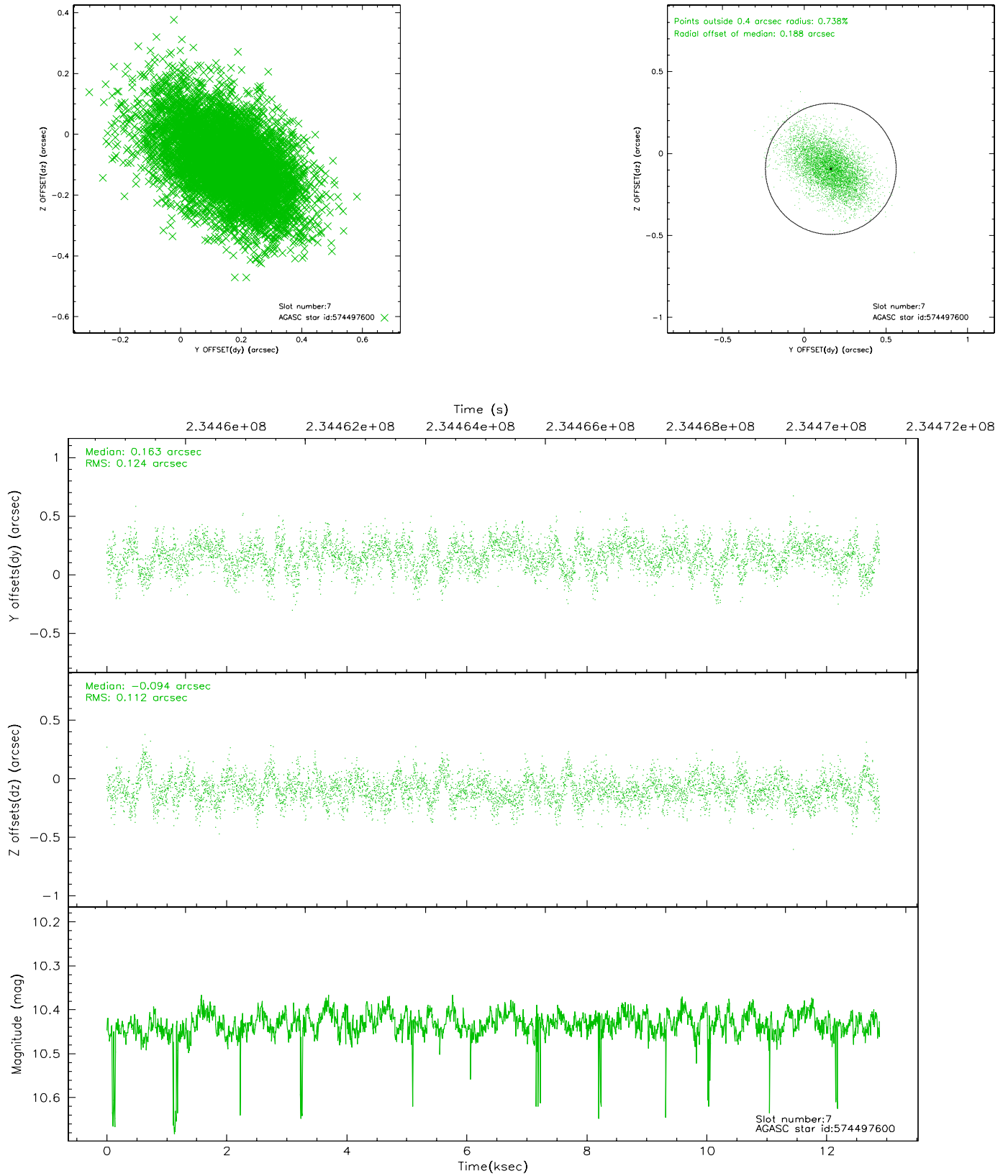
### 2.4.3 Slot 5



## 2.4.4 Slot 6

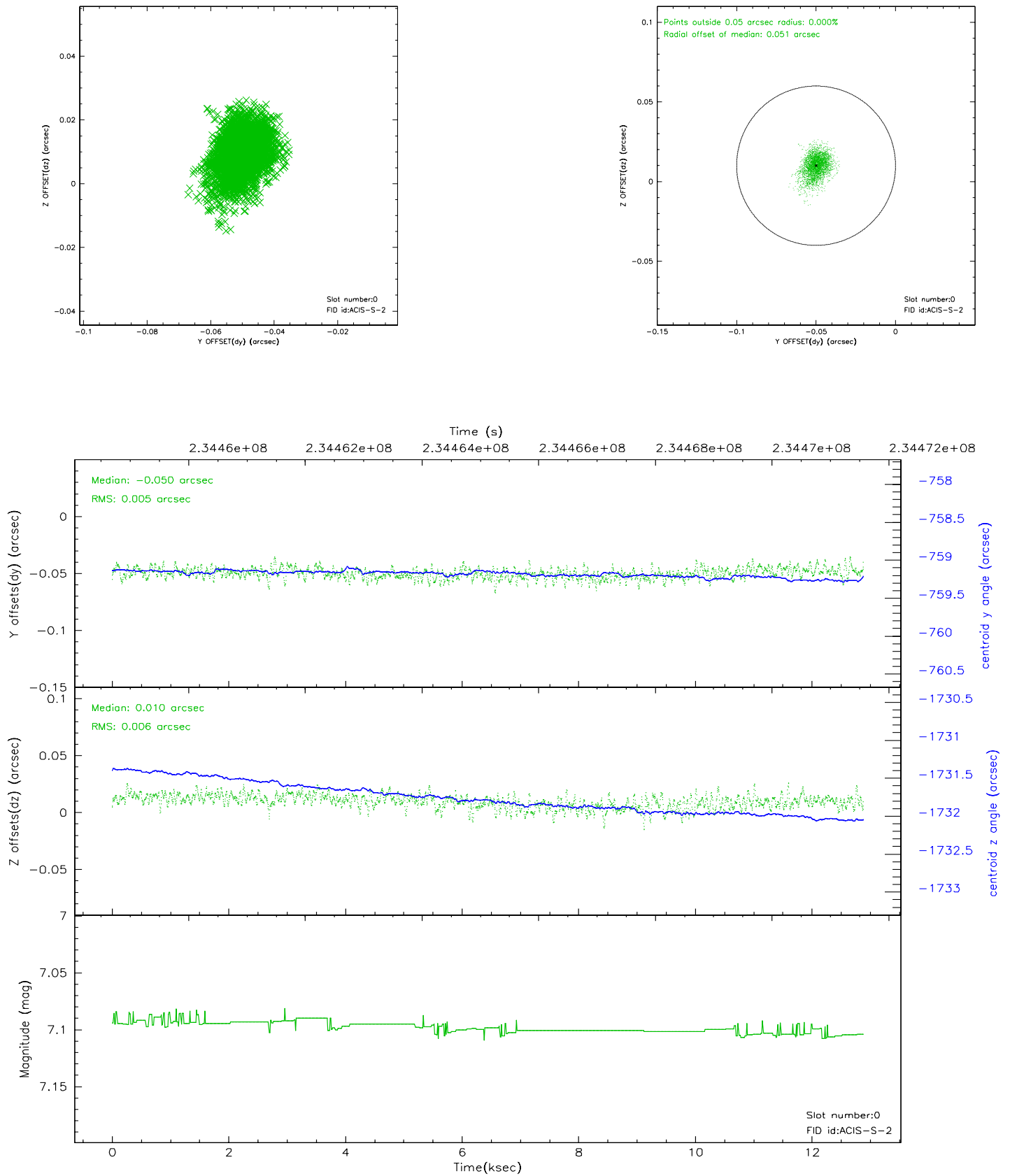


## 2.4.5 Slot 7

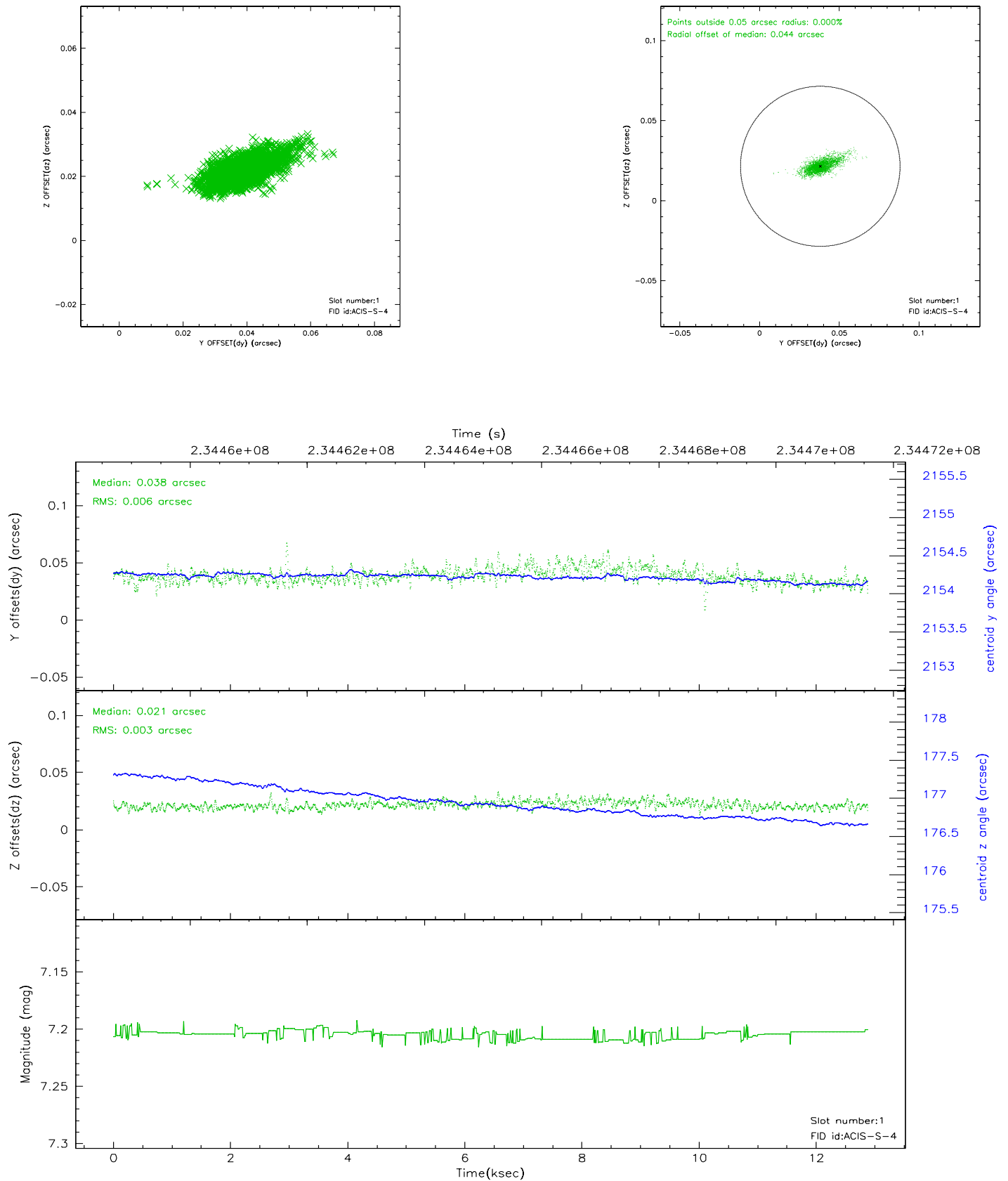


## 2.5 FID Slots

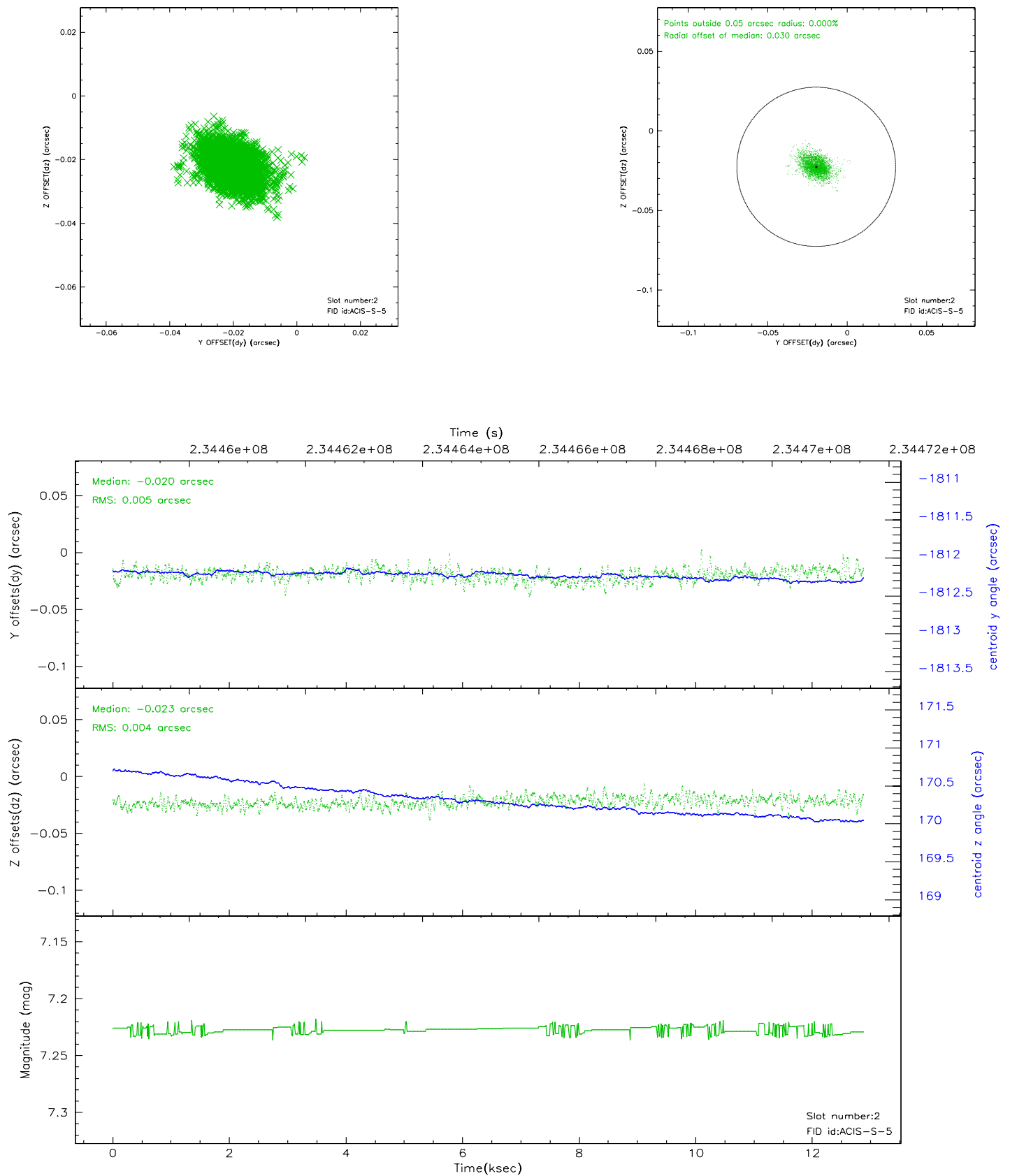
### 2.5.1 Slot 0



## 2.5.2 Slot 1

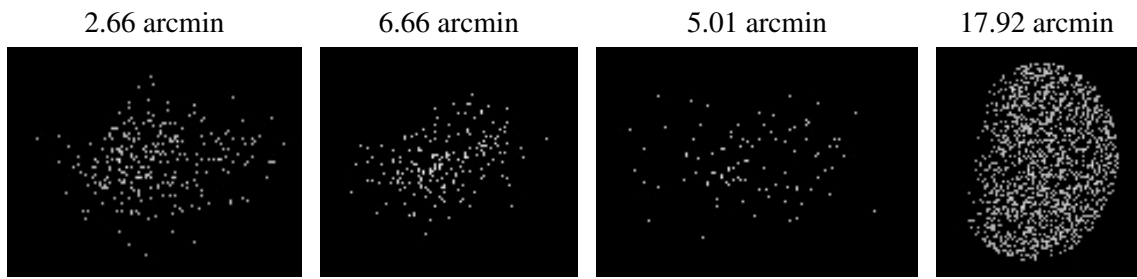


### 2.5.3 Slot 2





### 3 Point Sources



# A Summary

## A.1 Status

V&V Scientist	Jen Lauer
V&V Date (YYYY-MM-DD)	2006.03.09
V&V Edition	1
V&V Disposition and Status	OK
V&V Charge Time	11.95839

## A.2 Comments

Preferred roll met. Monitor constraint met.