

# V&V Reference Report

## L2 ASCDS Version : 8.4.3

Observation 59159 - L2 Version 2  
Chandra X-Ray Center

L2 Processing Date : Mar 24 2012

## Contents

<b>1</b>	<b>Front</b>	<b>2</b>
<b>2</b>	<b>OBI</b>	<b>3</b>
2.1	OBI . . . . .	3
2.1.1	Images . . . . .	3
2.1.2	Bias . . . . .	3
2.1.3	Parameters . . . . .	4
2.1.4	Events . . . . .	4
2.2	Compared Parameters . . . . .	5
2.3	Star Slots . . . . .	6
2.4	FID Slots . . . . .	6
<b>A</b>	<b>Summary</b>	<b>7</b>
A.1	Status . . . . .	7
A.2	Comments . . . . .	7

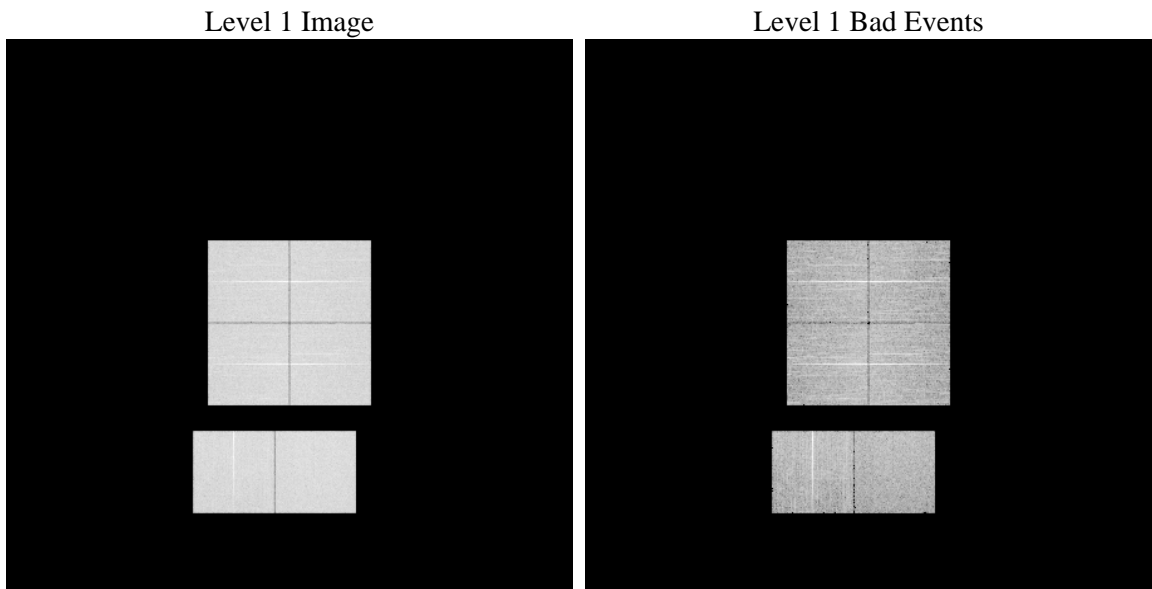
# 1 Front

seq_num	&#160	Sequence number
obs_id	59159	Observation id
title	ACIS-012367 diagnostics	Proposal title
observer	CHANDRA engineering request/realtime commanding	Principal investig
object	&#160	Source name
dtcycle	0	&#160
cycle	P	events from which exps? Prim/Second/Both
ra_targ	0.0	Observer's specified target RA [deg]
dec_targ	0.0	Observer's specified target Dec [deg]
ra_nom	116.52492796	Nominal RA [deg]
dec_nom	-7.4960705325148	Nominal Dec [deg]
roll_nom	345.11552094928	Nominal Roll [deg]
revision	2	Processing version of data
ontime	7800.2087981403	Sum of GTIs [s]
livetime	7701.4378576164	Livetime [s]
ontime0	7800.167758137	Sum of GTIs [s]
ontime1	7800.1267181337	Sum of GTIs [s]
ontime2	7800.0856781304	Sum of GTIs [s]
ontime3	7800.2498381436	Sum of GTIs [s]
ontime6	7800.0446381569	Sum of GTIs [s]
ontime7	7800.2087981403	Sum of GTIs [s]
l2events	942408	Number of level 2 events

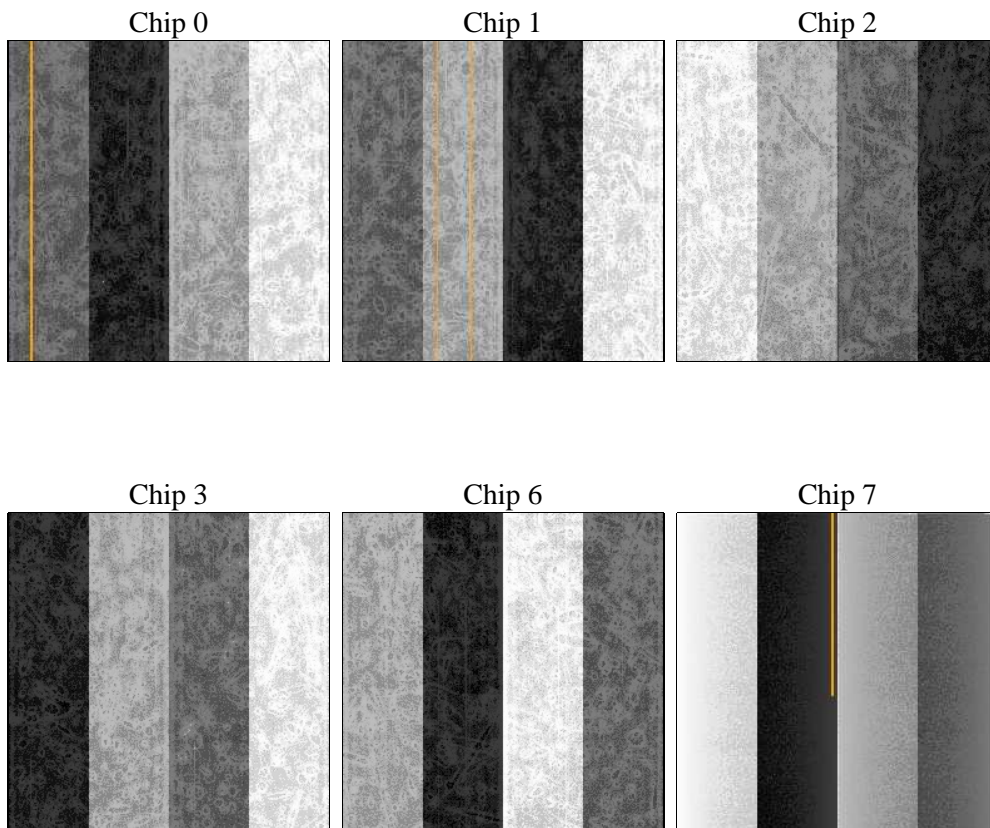
## 2 OBI

### 2.1 OBI

#### 2.1.1 Images



#### 2.1.2 Bias



### 2.1.3 Parameters

obi_num	0	Obi number	sched_exp_time	0.0	[s] Scheduled observation exposure time
ascdsver	8.4.3.1	Processing system revision	ontime	7800.2087981403	Sum of GTIs [s]
caldsver	4.4.8	&#160	ontime0	7800.167758137	Sum of GTIs [s]
date	2012-03-24T06:26:42	Date and time of file creation	ontime1	7800.1267181337	Sum of GTIs [s]
revision	2	Processing version of data	ontime2	7800.0856781304	Sum of GTIs [s]
			ontime3	7800.2498381436	Sum of GTIs [s]
			ontime6	7800.0446381569	Sum of GTIs [s]
			ontime7	7800.2087981403	Sum of GTIs [s]
			l1events	1351368	Number of level 1 events

### 2.1.4 Events

	ccd 0	ccd 1	ccd 2	ccd 3	ccd 6	ccd 7		ccd 0	ccd 1	ccd 2	ccd 3	ccd 6	ccd 7
level 1 events	219021	215894	224305	222443	230173	239532	grade 0 events	86526	86086	89569	89490	89828	43196
rejected events	60436	56669	64066	62102	63480	52742		39%	39%	39%	40%	39%	18%
rejected %	27%	26%	28%	27%	27%	22%	grade 1 events	508	450	555	572	486	163
								0%	0%	0%	0%	0%	0%
							grade 2 events	28010	28833	27216	27459	28927	41000
								12%	13%	12%	12%	12%	17%
							grade 3 events	10566	10301	10486	10484	10670	18330
								4%	4%	4%	4%	4%	7%
							grade 4 events	10173	10113	10616	10597	10511	18222
								4%	4%	4%	4%	4%	7%
							grade 5 events	3397	3546	3342	3844	3708	9233
								1%	1%	1%	1%	1%	3%
							grade 6 events	23310	23892	22352	22311	26757	66042
								10%	11%	9%	10%	11%	27%
							grade 7 events	56531	52673	60169	57686	59286	43346
								25%	24%	26%	25%	25%	18%

## 2.2 Compared Parameters

Parameter	Planned	Actual	Parameter	Planned	Actual
Instrument	ACIS	ACIS	Obspar format version number	7	7
Detector	ACIS-012367	ACIS-012367	Obspar file type	PREDICTED	ACTUAL
Grating	NONE	NONE	Obspar update status	NONE	UPDATED
Data mode	FAINT	FAINT	On-chip summing requested	N	N
Observation mode	SECONDARY	SECONDARY	Subarray requested	NONE	NONE
[deg] Pointing RA	0	116.5249279600045	Alternating exposures requested	N	N
[deg] Pointing Dec	0	-7.496070532514834	[s] Primary exposure time	3.2	3.2
[deg] Pointing Roll	0.0	345.1155209492809			
[mm] SIM focus pos	-0.782348	-0.7809083437167272			
[mm] SIM defocus	0	0.7524282956875696			
[mm] SIM translation stage pos	-233.592463	250.466033080201			
[mm] SIM translation stage offset	0	-0.01005468664627074			
[s] Observation start time (MET)	254272475.012403	254272473.98741			
Observation start date	2006-01-21T23:14:35	2006-01-21T23:14:33			
[s] Observation end time (MET)	254287042.313078	254287041.28808			
Observation end date	2006-01-22T03:17:22	2006-01-22T03:17:21			
Read mode	TIMED	TIMED			

## **2.3 Star Slots**

## **2.4 FID Slots**

## **A Summary**

### **A.1 Status**

V&V Scientist	Jen Lauer
V&V Date (YYYY-MM-DD)	2012.03.26
V&V Edition	1
V&V Disposition and Status	OK
V&V Charge Time	7.8002087981403

### **A.2 Comments**