

# V&V Reference Report

## L2 ASCDS Version : 8.4.3

Observation 58949 - L2 Version 2  
Chandra X-Ray Center

L2 Processing Date : Apr 2 2012

## Contents

<b>1</b>	<b>Front</b>	<b>2</b>
<b>2</b>	<b>OBI</b>	<b>3</b>
2.1	OBI . . . . .	3
2.1.1	Images . . . . .	3
2.1.2	Bias . . . . .	3
2.1.3	Parameters . . . . .	4
2.1.4	Events . . . . .	4
2.2	Compared Parameters . . . . .	5
2.3	Star Slots . . . . .	6
2.4	FID Slots . . . . .	6
<b>A</b>	<b>Summary</b>	<b>7</b>
A.1	Status . . . . .	7
A.2	Comments . . . . .	7

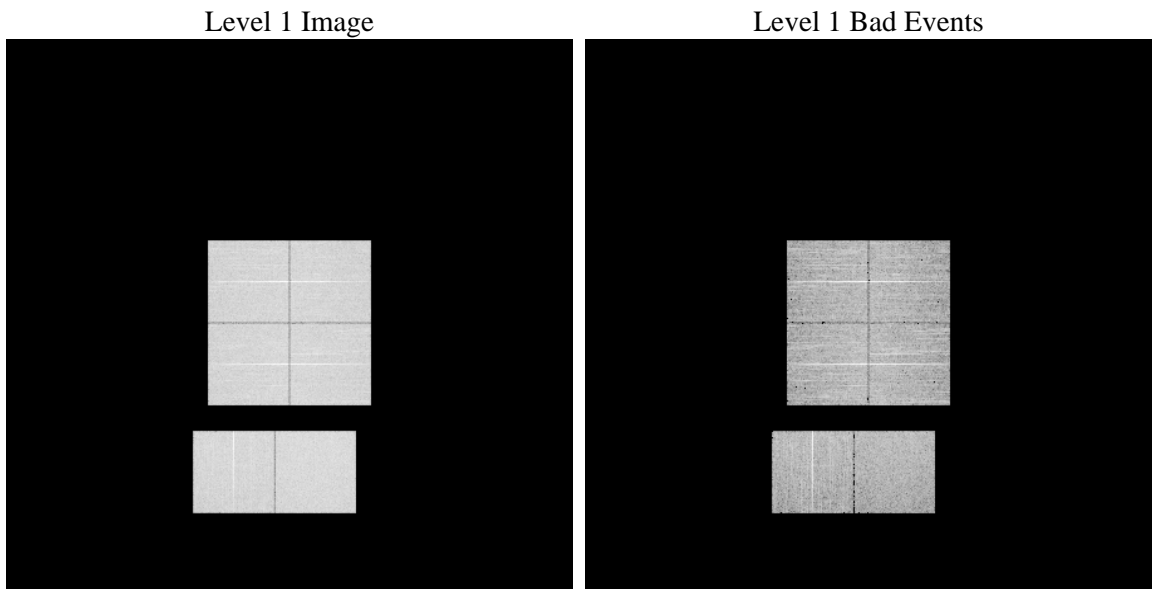
# 1 Front

seq_num	&#160	Sequence number
obs_id	58949	Observation id
title	ACIS-012367 diagnostics	Proposal title
observer	CHANDRA engineering request/realtime commanding	Principal investig
object	&#160	Source name
dtcycle	0	&#160
cycle	P	events from which exps? Prim/Second/Both
ra_targ	0.0	Observer's specified target RA [deg]
dec_targ	0.0	Observer's specified target Dec [deg]
ra_nom	270.97317627751	Nominal RA [deg]
dec_nom	-4.9898014851329	Nominal Dec [deg]
roll_nom	126.16272558655	Nominal Roll [deg]
revision	2	Processing version of data
ontime	6325.804158628	Sum of GTIs [s]
livetime	6245.7030174295	Livetime [s]
ontime0	6325.7631186247	Sum of GTIs [s]
ontime1	6325.7220786214	Sum of GTIs [s]
ontime2	6325.6810386181	Sum of GTIs [s]
ontime3	6325.8451986313	Sum of GTIs [s]
ontime6	6325.6399986446	Sum of GTIs [s]
ontime7	6325.804158628	Sum of GTIs [s]
l2events	708335	Number of level 2 events

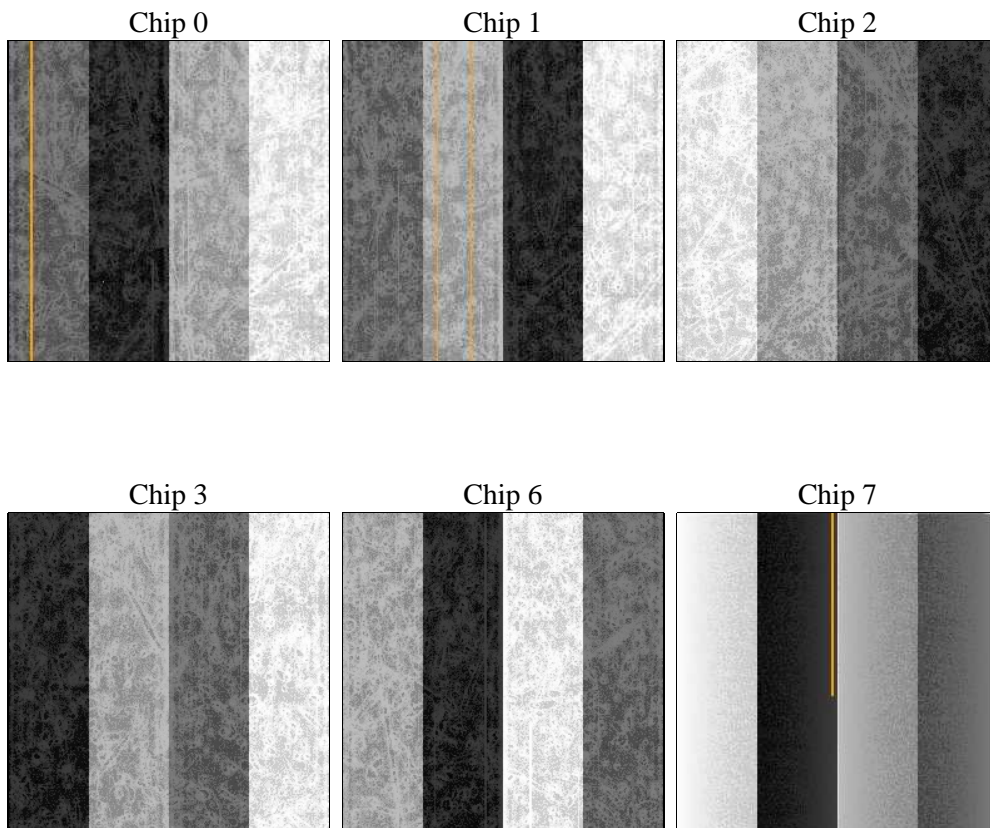
## 2 OBI

### 2.1 OBI

#### 2.1.1 Images



#### 2.1.2 Bias



### 2.1.3 Parameters

obi_num	0	Obi number	sched_exp_time	0.0	[s] Scheduled observation exposure time
ascdsver	8.4.3.1	Processing system revision	ontime	6325.804158628	Sum of GTIs [s]
caldsver	4.4.9	&#160	ontime0	6325.7631186247	Sum of GTIs [s]
date	2012-04-02T06:38:34	Date and time of file creation	ontime1	6325.7220786214	Sum of GTIs [s]
revision	2	Processing version of data	ontime2	6325.6810386181	Sum of GTIs [s]
			ontime3	6325.8451986313	Sum of GTIs [s]
			ontime6	6325.6399986446	Sum of GTIs [s]
			ontime7	6325.804158628	Sum of GTIs [s]
			l1events	1059172	Number of level 1 events

### 2.1.4 Events

	ccd 0	ccd 1	ccd 2	ccd 3	ccd 6	ccd 7		ccd 0	ccd 1	ccd 2	ccd 3	ccd 6	ccd 7
level 1 events	170501	168802	176099	175559	178279	189932	grade 0 events	64387	64045	66741	67020	67041	32239
rejected events	52359	50191	55837	55280	53122	46500		37%	37%	37%	38%	37%	16%
rejected %	30%	29%	31%	31%	29%	24%	grade 1 events	429	402	472	435	397	130
								0%	0%	0%	0%	0%	0%
							grade 2 events	20726	21093	20441	20503	21780	31164
								12%	12%	11%	11%	12%	16%
							grade 3 events	7624	7660	8058	7891	8013	14121
								4%	4%	4%	4%	4%	7%
							grade 4 events	7815	7635	7976	8020	8006	13985
								4%	4%	4%	4%	4%	7%
							grade 5 events	3011	3001	2801	3270	3244	7961
								1%	1%	1%	1%	1%	4%
							grade 6 events	17590	18178	17046	16845	20317	51923
								10%	10%	9%	9%	11%	27%
							grade 7 events	48919	46788	52564	51575	49481	38409
								28%	27%	29%	29%	27%	20%

## 2.2 Compared Parameters

Parameter	Planned	Actual	Parameter	Planned	Actual
Instrument	ACIS	ACIS	Obspar format version number	7	7
Detector	ACIS-012367	ACIS-012367	Obspar file type	PREDICTED	ACTUAL
Grating	NONE	NONE	Obspar update status	NONE	UPDATED
Data mode	FAINT	FAINT	On-chip summing requested	N	N
Observation mode	SECONDARY	SECONDARY	Subarray requested	NONE	NONE
[deg] Pointing RA	0	270.9731762775082	Alternating exposures requested	N	N
[deg] Pointing Dec	0	-4.989801485132941	[s] Primary exposure time	3.2	3.2
[deg] Pointing Roll	0.0	126.1627255865526			
[mm] SIM focus pos	-0.782348	-0.6828225247311905			
[mm] SIM defocus	0	0.8505141146731063			
[mm] SIM translation stage pos	-233.592463	250.466033080201			
[mm] SIM translation stage offset	0	-0.01005468664627074			
[s] Observation start time (MET)	265235961.622657	265235960.59766			
Observation start date	2006-05-28T20:39:22	2006-05-28T20:39:20			
[s] Observation end time (MET)	265244766.373068	265244765.34807			
Observation end date	2006-05-28T23:06:06	2006-05-28T23:06:05			
Read mode	TIMED	TIMED			

## 2.3 Star Slots

## 2.4 FID Slots

## A Summary

### A.1 Status

V&V Scientist	Jen Lauer
V&V Date (YYYY-MM-DD)	2012.04.03
V&V Edition	1
V&V Disposition and Status	OK
V&V Charge Time	6.325804158628

### A.2 Comments