

V&V Reference Report

L2 ASCDS Version : 8.4.4

Observation 58129 - L2 Version 2
Chandra X-Ray Center

L2 Processing Date : May 4 2012

Contents

1	Front	2
2	OBI	3
2.1	OBI	3
2.1.1	Images	3
2.1.2	Bias	3
2.1.3	Parameters	4
2.1.4	Events	4
2.2	Compared Parameters	5
2.3	Star Slots	6
2.4	FID Slots	6
A	Summary	7
A.1	Status	7
A.2	Comments	7

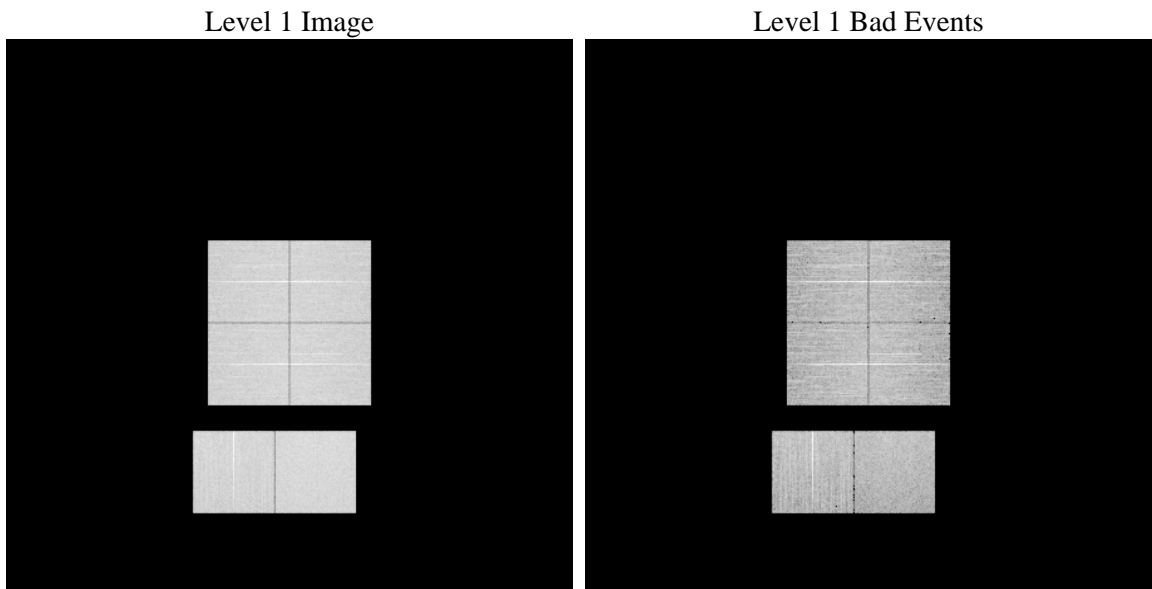
1 Front

seq_num	 	Sequence number
obs_id	58129	Observation id
title	ACIS-012367 diagnostics	Proposal title
observer	CHANDRA engineering request/realtime commanding	Principal investig
object	 	Source name
dtcycle	0	
cycle	P	events from which exps? Prim/Second/Both
ra_targ	0.0	Observer's specified target RA [deg]
dec_targ	0.0	Observer's specified target Dec [deg]
ra_nom	22.003521509058	Nominal RA [deg]
dec_nom	31.97143050489	Nominal Dec [deg]
roll_nom	243.06547131998	Nominal Roll [deg]
revision	2	Processing version of data
ontime	8275.1999692321	Sum of GTIs [s]
livetime	8170.4144044945	Livetime [s]
ontime0	8275.1999692321	Sum of GTIs [s]
ontime1	8275.1999692321	Sum of GTIs [s]
ontime2	8275.1999692321	Sum of GTIs [s]
ontime3	8275.1999692321	Sum of GTIs [s]
ontime6	8275.1999692321	Sum of GTIs [s]
ontime7	8275.1999692321	Sum of GTIs [s]
l2events	680268	Number of level 2 events

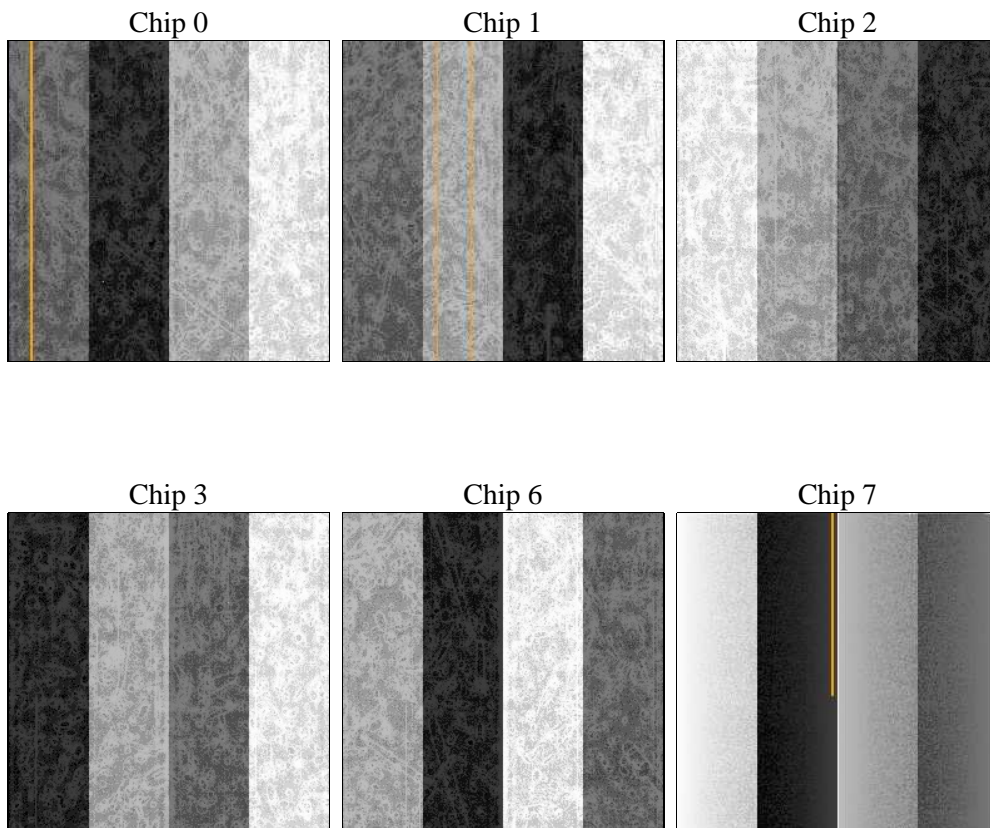
2 OBI

2.1 OBI

2.1.1 Images



2.1.2 Bias



2.1.3 Parameters

obi_num	0	Obi number	sched_exp_time	0.0	[s] Scheduled observation exposure time
ascdsver	8.4.4	Processing system revision	ontime	8275.1999692321	Sum of GTIs [s]
caldsver	4.4.9	 	ontime0	8275.1999692321	Sum of GTIs [s]
date	2012-05-04T14:52:29	Date and time of file creation	ontime1	8275.1999692321	Sum of GTIs [s]
revision	2	Processing version of data	ontime2	8275.1999692321	Sum of GTIs [s]
			ontime3	8275.1999692321	Sum of GTIs [s]
			ontime6	8275.1999692321	Sum of GTIs [s]
			ontime7	8275.1999692321	Sum of GTIs [s]
			l1events	1142533	Number of level 1 events

2.1.4 Events

	ccd 0	ccd 1	ccd 2	ccd 3	ccd 6	ccd 7		ccd 0	ccd 1	ccd 2	ccd 3	ccd 6	ccd 7
level 1 events	182523	179607	186206	187920	194378	211899	grade 0 events	60535	60192	61737	62330	62811	30492
rejected events	70454	66604	73578	73990	76485	64382		33%	33%	33%	33%	32%	14%
rejected %	38%	37%	39%	39%	39%	30%	grade 1 events	424	353	500	468	365	188
								0%	0%	0%	0%	0%	0%
							grade 2 events	19896	20705	19258	19810	20562	31995
								10%	11%	10%	10%	10%	15%
							grade 3 events	7381	7371	7482	7717	7439	13898
								4%	4%	4%	4%	3%	6%
							grade 4 events	7235	7389	7660	7672	7421	13921
								3%	4%	4%	4%	3%	6%
							grade 5 events	3842	3999	3645	4325	4328	10572
								2%	2%	1%	2%	2%	4%
							grade 6 events	17068	17396	16543	16401	19695	57211
								9%	9%	8%	8%	10%	26%
							grade 7 events	66142	62202	69381	69197	71757	53622
								36%	34%	37%	36%	36%	25%

2.2 Compared Parameters

Parameter	Planned	Actual	Parameter	Planned	Actual
Instrument	ACIS	ACIS	Obspar format version number	7	7
Detector	ACIS-012367	ACIS-012367	Obspar file type	PREDICTED	ACTUAL
Grating	NONE	NONE	Obspar update status	NONE	UPDATED
Data mode	FAINT	FAINT	On-chip summing requested	N	N
Observation mode	SECONDARY	SECONDARY	Subarray requested	NONE	NONE
[deg] Pointing RA	0	22.00352150905813	Alternating exposures requested	N	N
[deg] Pointing Dec	0	31.9714305048897	[s] Primary exposure time	3.2	3.2
[deg] Pointing Roll	0.0	243.0654713199845			
[mm] SIM focus pos	-0.782348	-0.7809083437167272			
[mm] SIM defocus	0	0.7524282956875696			
[mm] SIM translation stage pos	-233.592463	250.466033080201			
[mm] SIM translation stage offset	0	-0.01005468664627074			
[s] Observation start time (MET)	311427359.216923	311427358.19192			
Observation start date	2007-11-14T11:35:59	2007-11-14T11:35:58			
[s] Observation end time (MET)	311449603.767997	311449602.74299			
Observation end date	2007-11-14T17:46:44	2007-11-14T17:46:42			
Read mode	TIMED	TIMED			

2.3 Star Slots

2.4 FID Slots

A Summary

A.1 Status

V&V Scientist	Beth Sundheim
V&V Date (YYYY-MM-DD)	2012.05.07
V&V Edition	1
V&V Disposition and Status	OK
V&V Charge Time	8.2751999692321

A.2 Comments